

P-660RU-Tx

Quick Start Guide

ADSL2+ Ethernet/USB Router

Version 1.00

Edition 1, 01/2010

DEFAULT LOGIN DETAILS

IP Address	http://192.168.1.1
User	admin
Password	1234



ZyXEL

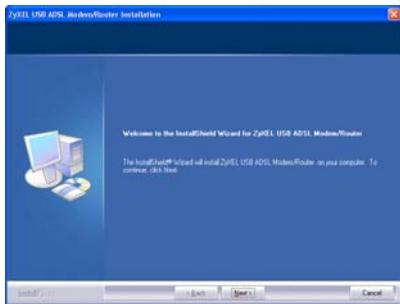
Introduction

The P-660RU-Tx is an ADSL2+ router with firewall and both Ethernet and USB ports.

What You Have to Do

- Install the USB driver.

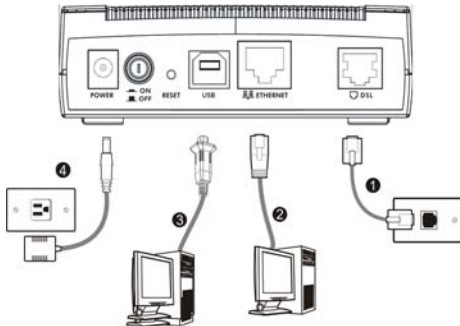
If you want to connect a computer to the USB port, install the driver before you connect the device to the computer's USB port. Insert the included CD. The CD runs automatically. Follow the steps in the screen to install the USB driver.



- [Connect the Hardware](#), see page 3
- [Internet Access](#), see page 4

See the User's Guide for more details on all features.

Connect the Hardware



1. **DSL:** Use a telephone wire to connect this port to a telephone jack.
2. **ETHERNET:** Use an Ethernet cable to connect this port to your computer's Ethernet port.
3. **USB:** Use a USB cable to connect this port to your computer's USB port.
4. **POWER:** Use the included power adaptor to connect an appropriate power source to this socket. Push the power switch to the on position.

Do not connect the same computer to both the USB and Ethernet ports on the P-660RU-Tx.

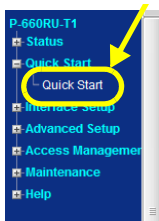
Internet Access








You need your account information provided by your ISP, such as user name, password, and so on.

1. Enter the default IP address **http://192.168.1.1** in your browser. Then type the user name (**admin** by default) and password (**1234** by default) in the login screen. Click **OK**.



2. Click **Quick Start > Quick Start** and follow the steps in the wizard to configure the Internet connection. See the **Quick Start Wizard** chapter in the User's Guide for more details.



ENGLISH	DEUTSCH	ESPAÑOL	FRANÇAIS
<p>Green Product Declaration RoHS Directive 2002/95/EC</p>  <p>WEEE Directive 2002/96/EC (WEEE - Waste Electrical and Electronic Equipment) 2003/108/EC</p> <p>Declaration Signature: <i>Martin Chao</i> Name/Title: Martin Chao / Quality Assurance Director Date (yyyy/mm/dd): 2008/06/05</p>	<p>Green Product Declaration RoHS Directive 2002/95/EC</p>  <p>WEEE Directive 2002/96/EC (WEEE - Waste Electrical and Electronic Equipment) 2003/108/EC</p> <p>Unterschrift des Erklärenden: <i>Martin Chao</i> Name/Title: Martin Chao / Quality Assurance Director Datum (JJJJ/MM/TT): 2008/06/05</p>	<p>Declaración de Producto Ecológico Directiva RoHS 2002/95/EC</p>  <p>Directiva REEE 2002/96/EC (REEE - Residuos de Equipos Electrónicos y Electrónicos) 2003/108/EC</p> <p>Firma de declaración: <i>Martin Chao</i> Nombre/Título: Martin Chao / Quality Assurance Director Fecha (aaaa/mm/aa): 2008/06/05</p>	<p>Déclaration de Produit Green Directive RoHS 2002/95/EC</p>  <p>Directive DEEE 2002/96/EC (DEEE - Déchets des Equipements Electroniques et Electroniques) 2003/108/EC</p> <p>Signature de la déclaration: <i>Martin Chao</i> Nom/Title: Martin Chao / Quality Assurance Director Date (aaaa/mm/aa): 2008/06/05</p>
<p>Dichiarazione Green Product Diretiva RoHS 2002/95/CE</p>  <p>Directiva RAEE 2002/96/CE (RAEE: Rifiuti di Apparecchiature Elettriche ed Elettroniche) 2003/108/CE</p> <p>Firma dichiarazione: <i>Martin Chao</i> Nome/Title: Martin Chao / Quality Assurance Director Data (aaaa/mm/aa): 2008/06/05</p>	<p>Productmilieuverklaring RoHS-richtlijn 2002/95/EC</p>  <p>AEEA-richtlijn 2002/96/EC (AEEA: Afgedankte Elektrische en Elektronische Apparaten) 2003/108/EC</p> <p>Verklaringhandtekening: <i>Martin Chao</i> Naam/Titel: Martin Chao / Quality Assurance Director Datum (JJJJ/MM/aa): 2008/06/05</p>	<p>SVENSKA Miljödeklaration</p>  <p>WEEE Direktiv 2002/96/EC (WEEE: hantering av elektriskt och elektroniskt avfall) 2003/108/EC</p> <p>Deklaration undertecknad av: <i>Martin Chao</i> Namn/Title: Martin Chao / Quality Assurance Director Datum (åååå/mm/åå): 2008/06/05</p>	
	<p>ITALIANO</p>		

