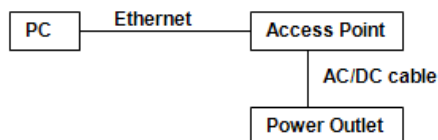


Quick Start Guide

802.11n Wireless Access Point

Hardware Installation

1. Place the unit in an appropriate place after conducting a site survey.
2. Plug one end of the Ethernet cable into the RJ-45 port of the device and another end into your PC/Notebook.
3. Insert the DC-inlet of the power adapter into the port labeled **DC-IN+** and the other end into the power socket on the wall.



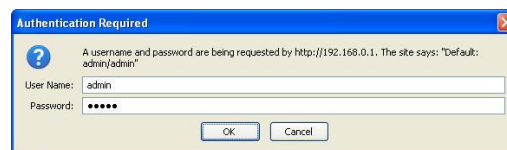
IP Address Configuration

The default IP address of the device is **192.168.1.1**. In order to log into this device, you must first configure the TCP/IP settings of your PC/Notebook.

1. In the control panel, double click Network Connections and then double click on the connection of your Network Interface Card (NIC). You will then see the following screen.
2. Select **Internet Protocol (TCP/IP)** and then click on the **Properties** button. This will allow you to configure the TCP/IP settings of your PC/Notebook.
3. Select **Use the following IP Address** radio button and then enter the IP address (192.168.1.21) and subnet mask (255.255.255.0). Ensure that the IP address and subnet mask are on the same subnet as the device.
4. Click on the **OK** button to close this window, and once again to close LAN properties window.

Logging In

1. To configure the device through the web-browser, enter the IP address of the AP (**default: 192.168.1.1**) into the address bar of the web-browser and press **Enter**.
2. After connecting to the IP address, the web-browser will display the login page. Specify **admin** as the default **User Name** and **Password**, and then click on the **Login** button.



Administration

1. Click on the **Admin** link under the **Management** menu. This option allows you to create a new password for the device. For security it is highly recommended for security reasons.
2. **Old Password:** Specify the old password into the first field. The default password is **admin**.
3. **New Password:** Specify a new password into this field and then re-type the password into the **Repeat New Password** field. Then click on the **Apply** button.
4. Click on the **Apply** button to save the changes.

Operating Mode

1. Press **System** to expand more selections.
2. **Operating Mode:** Select an operating mode from the drop-down list. Options available are Access Point, WDS Bridge and Universal Repeater mode.
3. Refer to the User's Manual for a detailed explanation of each operating mode.