

# Wireless Broadband Router

## BR-6424n / BR-6226n / BR-6225n Quick Installation Guide

Version 1.0 / April, 2009



## Multi-Languages QIG on the CD

---

Český	Českého průvodce rychlou instalací naleznete na přiloženém CD s ovladači.
Deutsch	Auf der beiliegend Treiber CD finden Sie deutsche Anleitung zur Schnellinstallation.
Español	Incluido en el CD el G.R.I. en Español.
Français	Veillez trouver l'français G.I.R ci-joint dans le CD.
Italiano	Incluso nel CD il Q.I.G. in Italiano.
Magyar	A magyar telepítési útmutató megtalálható a mellékelt CD-n.
Nederlands	De nederlandse Q.I.G. treft u aan op de bijgesloten CD.
Polski	Skrócona instrukcja instalacji w języku polskim znajduje się na załączonej płycie CD.
Português	Incluído no CD o G.I.R. em Portugues.
Русский	Русский: Найдите Q.I.G. на русском языке на приложенном CD.
Romania	Cd-ul cuprinde Ghid de instalare rapida in limba romana.
Türkçe	Ürün ile beraber gelen CD içinde Türkçe Hızlı Kurulum Kılavuzu'nu bulabilirsiniz.
繁/簡體中文	CD 片內含繁體中文及簡體中文快速安裝指南

## Contents

1 Product Introduction .....	4
1-1 Package Contents.....	5
1-2 Front Panel .....	5
1-3 Back Panel.....	6
2 Network Setup.....	7
Step 1:Getting Started .....	8
Step2 : PC LAN IP Configuration .....	9
2.1 Router Configuration – PPPoE .....	12
2.2 Router Configuration - Cable Modem.....	15
3 Advanced Setup .....	17
3-1 Change management password .....	17
3-2 Firmware Upgrade .....	18
3-3 System Restart and Reset to Default.....	20
3-4 Wireless Setup.....	20



Copyright© by Edimax Technology Co, LTD. all rights reserved. No part of this publication may be reproduced, transmitted, transcribed, stored in a retrieval system, or translated into any language or computer language, in any form or by any means, electronic, mechanical, magnetic, optical, chemical, manual or otherwise, without the prior written permission of this Company .

This company makes no representations or warranties, either expressed or implied, with respect to the contents hereof and specifically disclaims any warranties, merchantability or fitness for any particular purpose. Any software described in this manual is sold or licensed "as is". Should the programs prove defective following their purchase, the buyer (and not this company, its distributor, or its dealer) assumes the entire cost of all necessary servicing, repair, and any incidental or consequential damages resulting from any defect in the software. Further, this company reserves the right to revise this publication and to make changes from time to time in the contents hereof without obligation to notify any person of such revision or changes.

The product you have purchased and the setup screen may appear slightly different from those shown in this QIG. For more detailed information about this product, please refer to the User Manual on the CD-ROM. The software and specifications are subject to change without notice. Please visit our web site [www.edimax.com](http://www.edimax.com) for the update. All rights reserved including all brand and product names mentioned in this manual are trademarks and/or registered trademarks of their respective holders .

#### **Notice according to GNU/GPL-Version 2**

This product includes software that is subject to the GNU/GPL-Version 2. You find the text of the license on the product cd/dvd. The program is free software and distributed without any warranty of the author. We offer, valid for at least three years, to give you, for a charge no more than the costs of physically performing source distribution, a complete machine-readable copy of the corresponding source code.

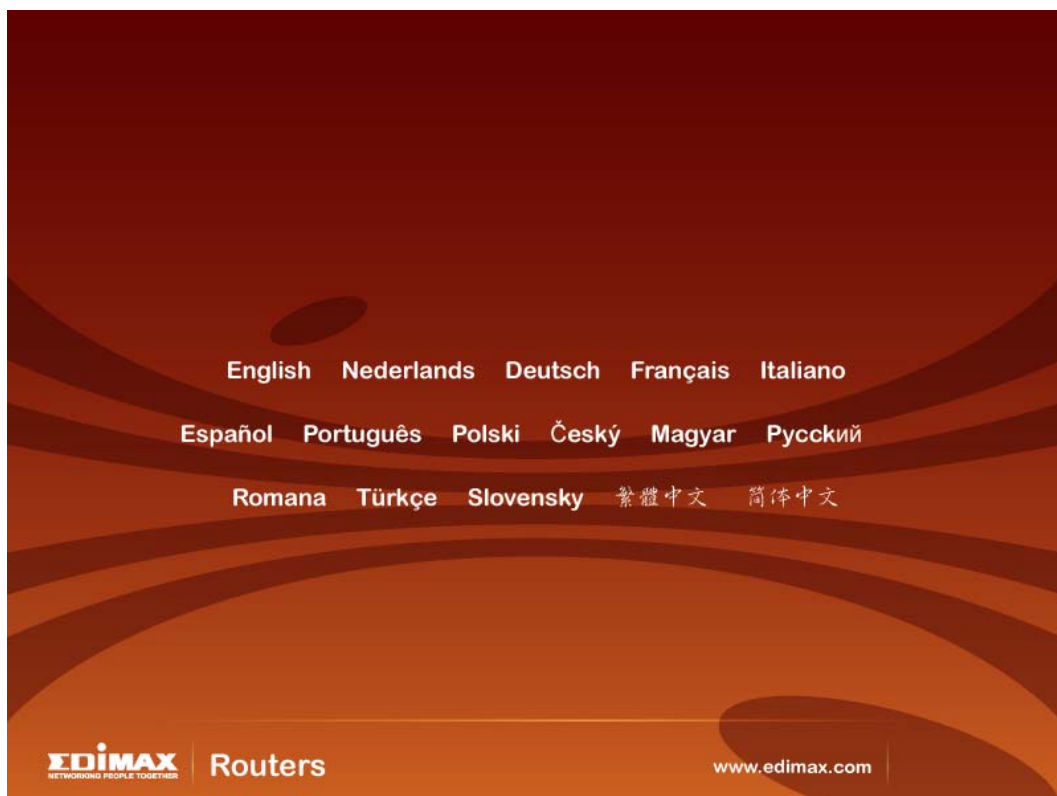
Please contact Edimax at: Edimax Technology co., Ltd, NO. 3, Wu-Chuan 3rd RD  
Wu-Ku-Industrial Park, Taipei Hsien, Taiwan. R.O.C., TEL : +886-2-77396888,  
FAX : +886-2-77396887, [sales@edimax.com.tw](mailto:sales@edimax.com.tw)

# 1 Product Introduction

Thank you for purchasing Edimax broadband router! This high cost-efficiency router is the best choice for Small office / Home office users, all computers and network devices can share a single xDSL / cable modem internet connection at high speed. Easy install procedures allows any computer users to setup a network environment in very short time - within minutes, even inexperienced. When the number of your computers and network-enabled devices grow, you can also expand the number of network slot by simple attach a hub or switch, to extend the scope of your network.

You can configure the router by running the Setup Wizard in the CD-ROM provided in the package. The wizard provides quick setup for the Internet connection, SSID, wireless security, firmware upgrade and changing router's password. When you start the Setup Wizard, you will get the following Welcome screen. Please choose the language to start with and follow the easy steps in the Wizard. No instruction for the Setup Wizard is given here.

If you lost the CD-ROM or you prefer the traditional web setup, please follow the procedures in this Quick Installation Guide to configure the router

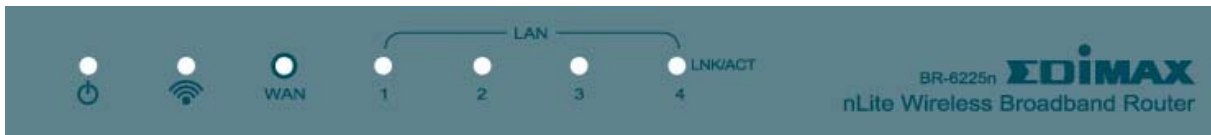


## 1-1 Package Contents

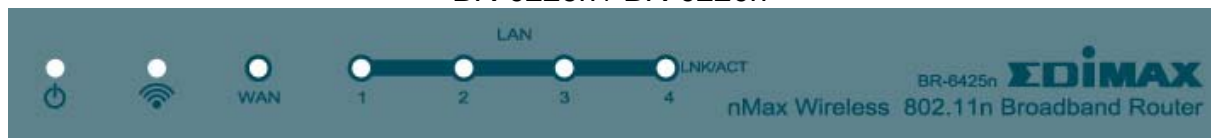
Before you starting to use this router, please check if there's anything missing in the package, and contact your dealer of purchase to claim for missing items :

- ☐ Broadband router (main body, 1 pcs)
- ☐ Quick installation guide (1 pcs)
- ☐ One CD-ROM (Including the Setup Wizard, Multi-languages Quick Installation Guide and User Manual)
- ☐ 12V power adapter (1 pcs)
- ☐ Ethernet Cable
- ☐ 3dBi Antenna (1 pcs for BR-6225n only )
- ☐ Accessories and Holding Base



## 1-2 Front Panel



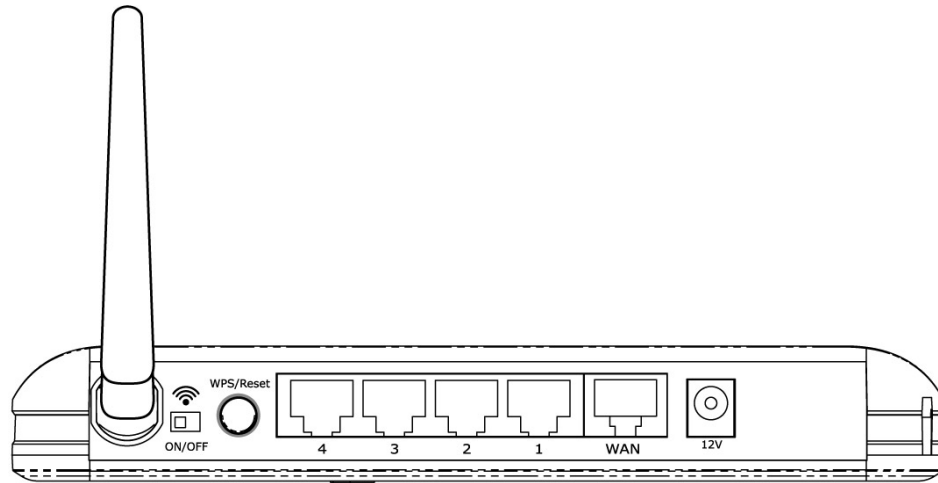
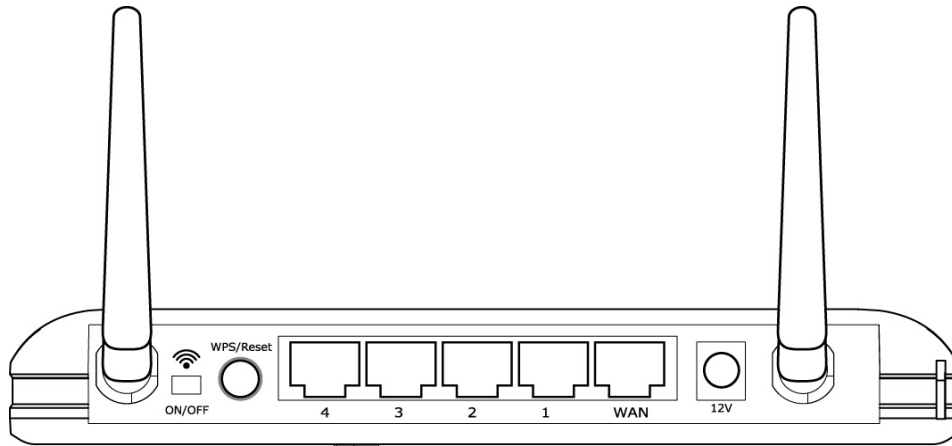
BR-6225n / BR-6226n




BR-6424n

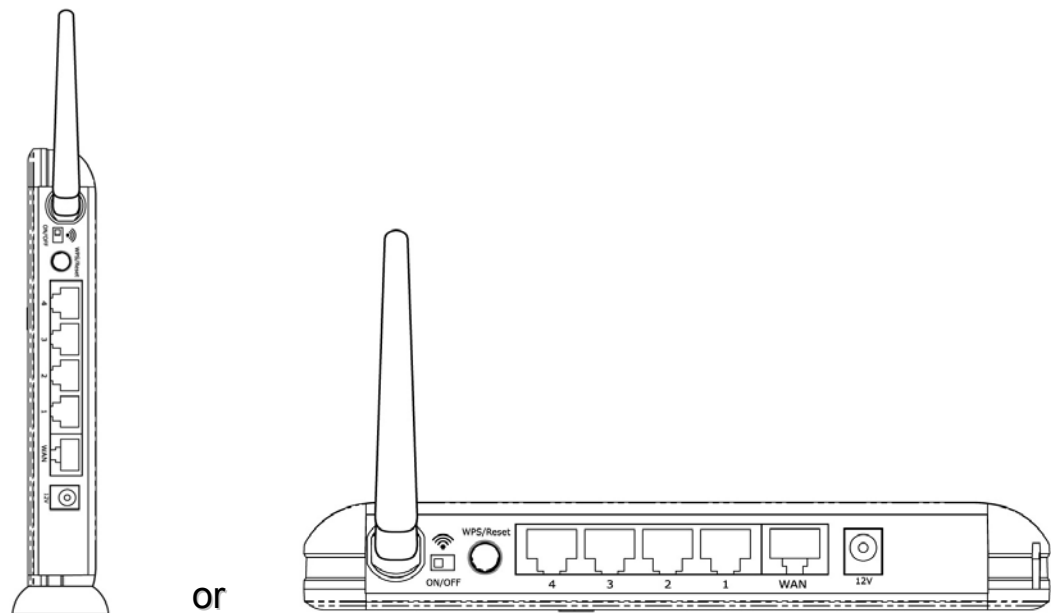
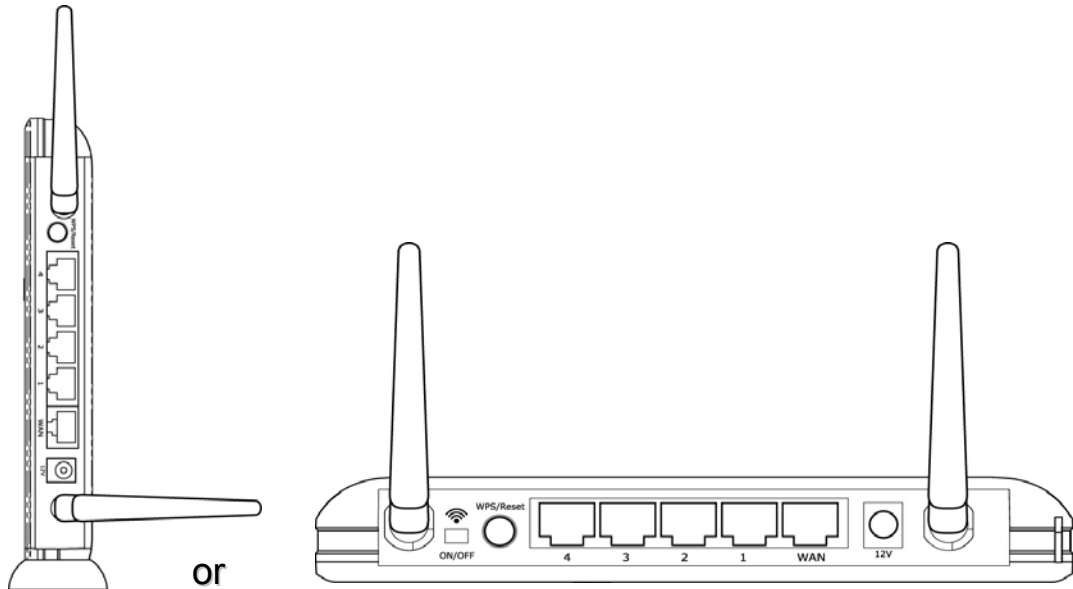
LED	Light Status	Description
PWR 	ON	Router is ready
WAN LNK/ACT	ON	WAN is connected
	Off	WAN is unconnected
	Flashing	WAN port is sending / receiving data
LAN LNK/ACT (Port 1-4)	ON	LAN port is connected
	Off	LAN port is unconnected
	Flashing	LAN port is sending / receiving data
WLAN 	ON	Wireless network is switched on or WPS mode is on.
	Off	Wireless LAN is disabled
	Flashing	Wireless LAN is sending / receiving data

## 1-3 Back Panel



Item Name	Description
Power	Power connector, connects to 12V power adapter
 ON/OFF	Enable / Disable wireless signal You can not connect the router via wireless adapter, when you disable the wireless signal.
Reset / WPS	Reset the router to factory default settings (clear all settings) or start WPS function. (a) Press this button and hold for 20 seconds to clear all settings. (b) Press this button for 2 ~ 5 seconds to start WPS function.
1 - 4	The router's 4 LAN ports are where you connect your LAN's PCs, printer servers, hubs and switches etc.
WAN	Wide Area Network (WAN / Internet) port

To improve wireless signal reception, please arrange the antennas as the picture shown below (horizontal or vertical installation), and place the wireless access point in open space. Please keep the distance between antennas, if the antennas are too close to each other, wireless signal reception will be affected.





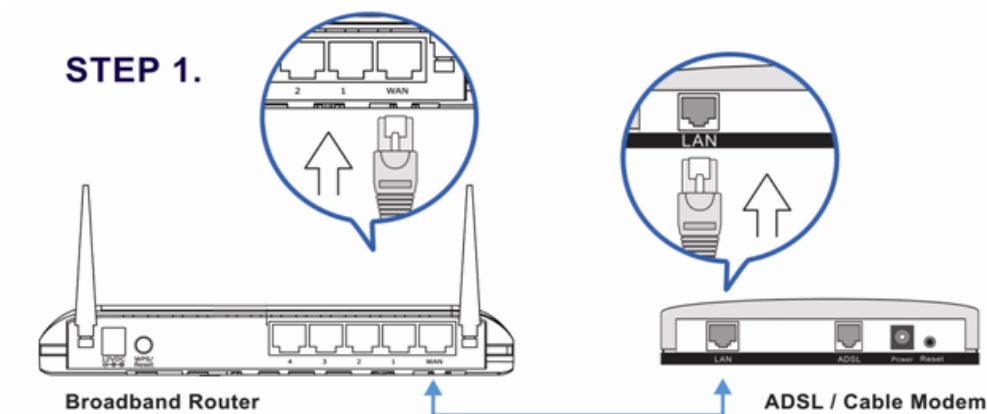
## 2 Network Setup

### Step 1: Getting Started

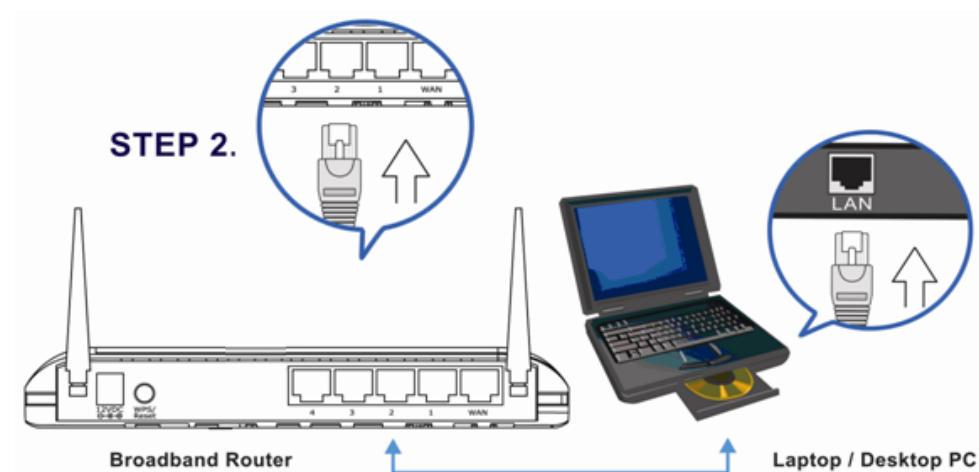
Instructions for using the router to share the Internet with multiple PCs. (Power on the Modem and the Router.)

#### Cabling installation:

1. Connect the Ethernet cable from the router's WAN port to the LAN port of the modem.



2. Connect another Ethernet cable from the any LAN ports (1~4) on router to the Ethernet socket on the PC.



3. Check to make sure the router's LINK LED is lit; to confirm the cable connections are made correctly.

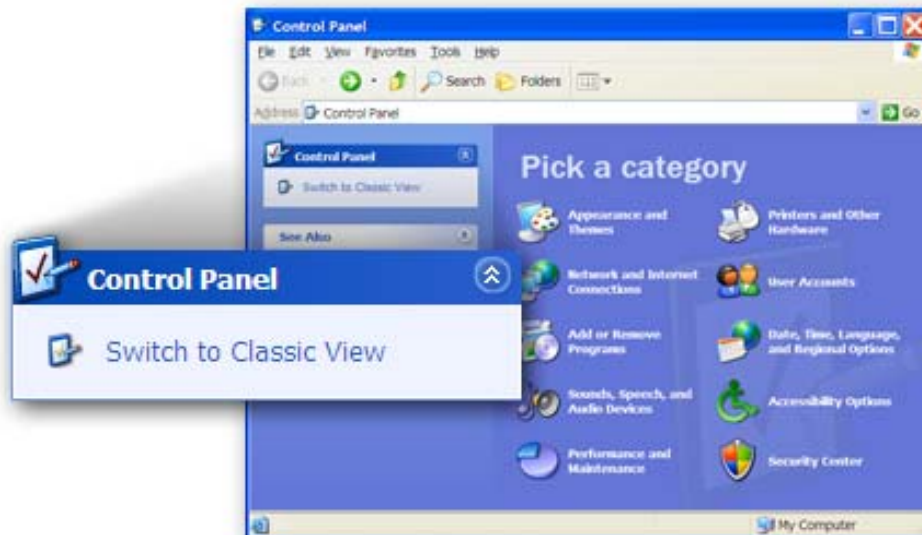
## Step2 : PC LAN IP Configuration

1. Configure the PC LAN setting to automatically obtain an IP address from the router by following the below steps.

- Click **“Start”** in the task bar then select the **“Control Panel”**.



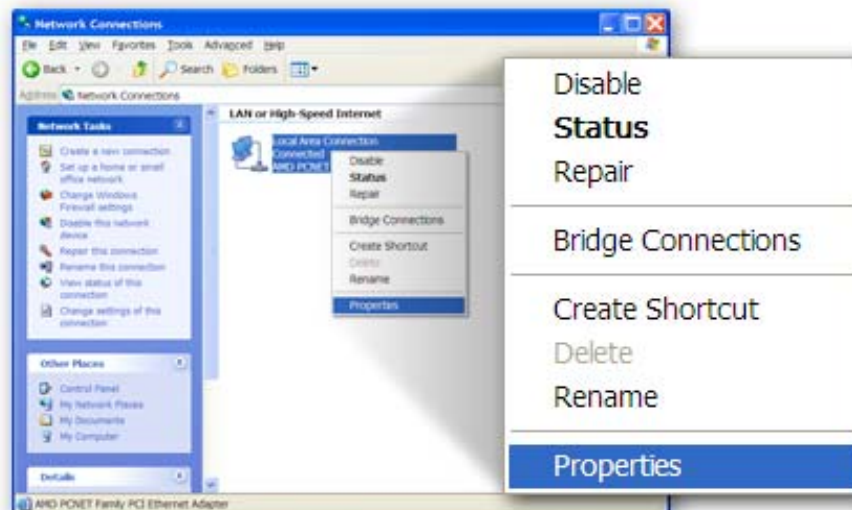
- Click **“Switch to Classic View”** on the left top to see more setting icons.



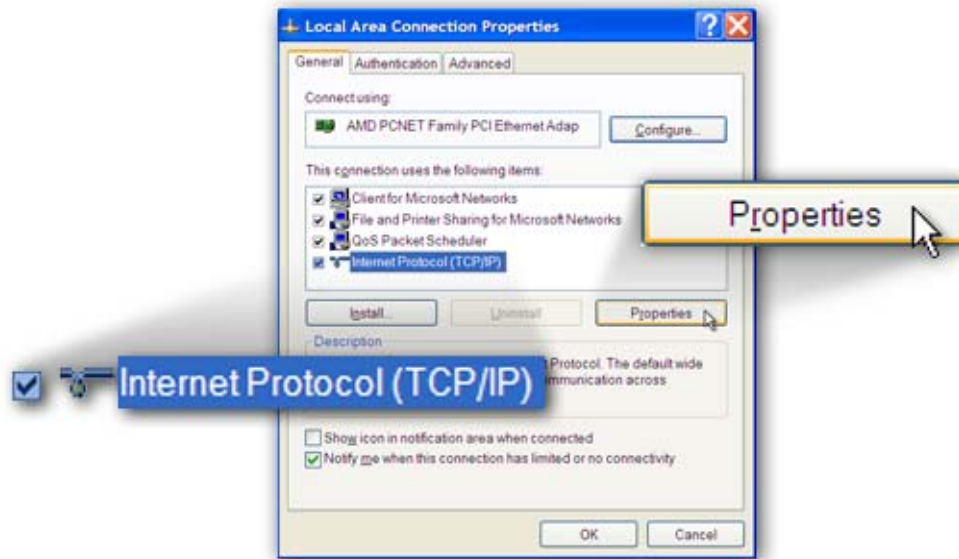
- Find an icon **“Network Connection”** then Double-Click to open the network connection setting.



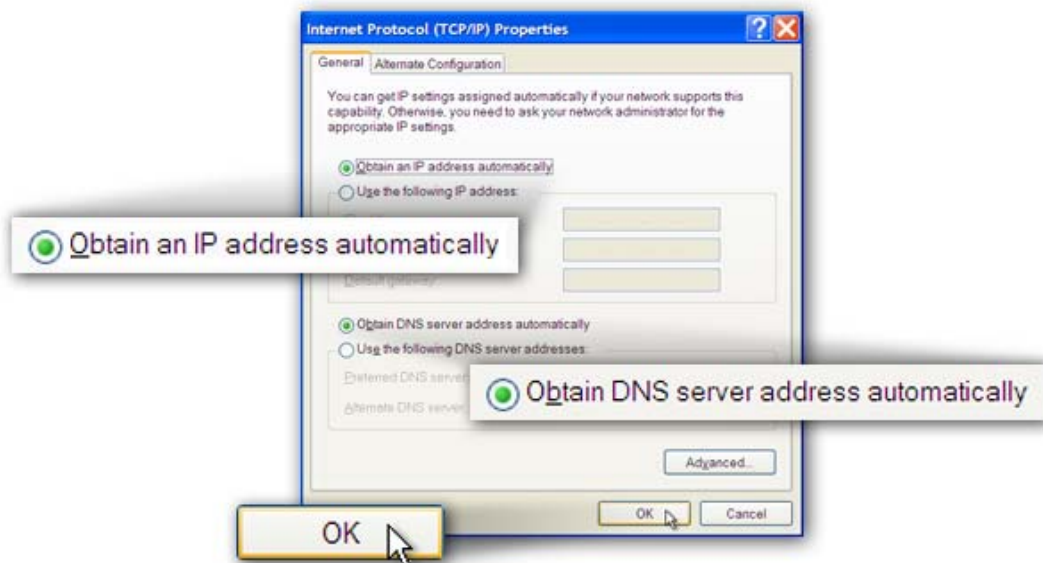
- You will see an icon **“Local Area Connection”**, select the icon then Right-Click the mouse to open the sub-menu and select the **“Properties”**.



- Select the “**Internet Protocol (TCP/IP)**” then click the “**Properties**”



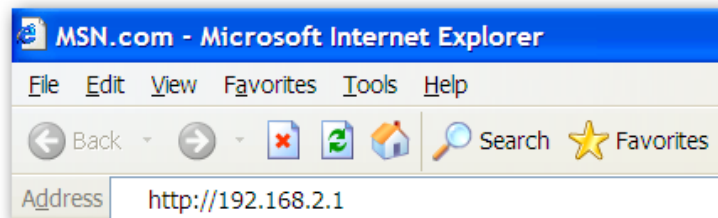
- Ensure the parameter marked in blue are checked in “**Obtain an IP address automatically**” and “**Obtain DNS server address automatically**” then press “**OK**” to close.



## 2.1 Router Configuration – PPPoE

**Note:** Please do not run the PPPoE software; otherwise the Internet connection for the router may fail.

1. Enter the router's default IP address: “192.168.2.1” into your PC's web browser and press “enter”.



2. The login screen below will appear. Enter the “User Name” and “Password” and click “OK” to login.

The default User name is “**admin**” and the Password is “**1234**”,



3. The main page will appear, click “**Quick Setup**” to setup the Internet connection. Following example is for “**PPPoE**” WAN setting.

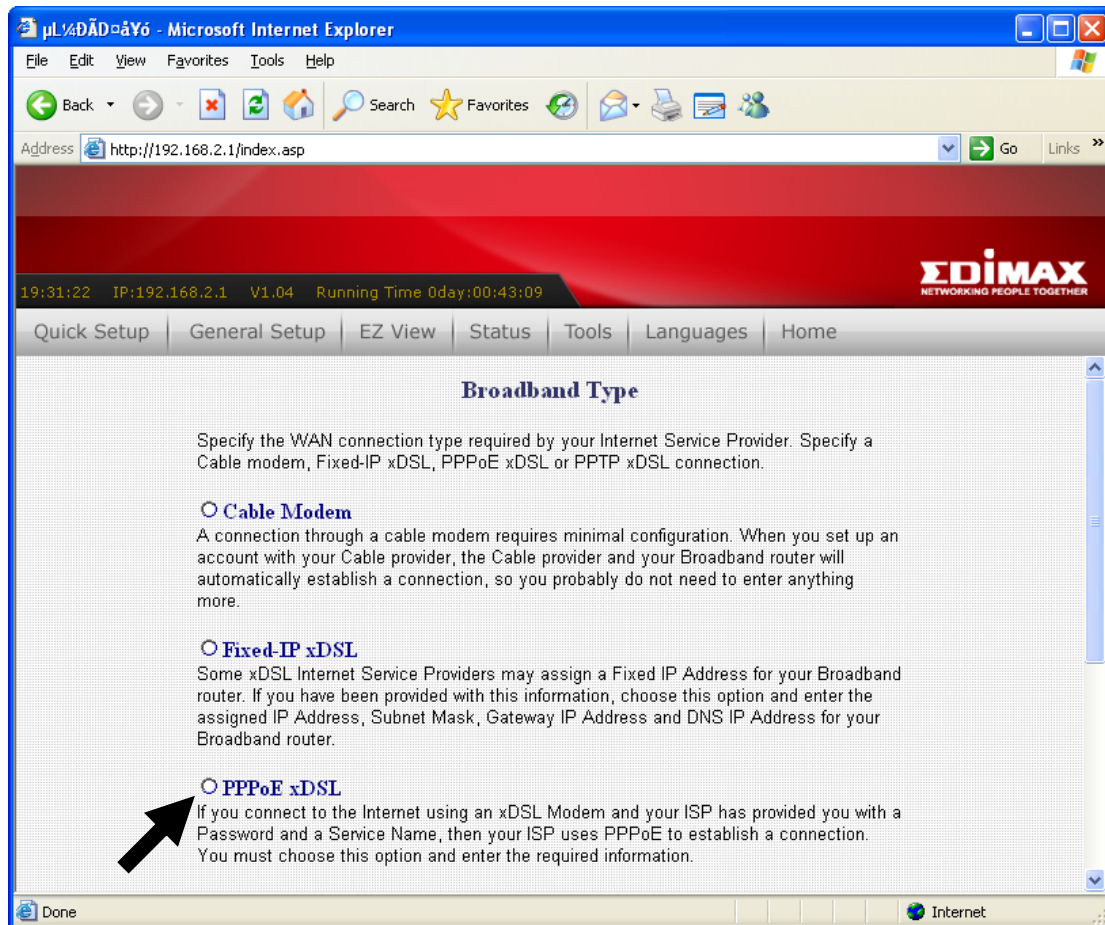


4. Select ‘(GMT) Greenwich Mean Time: (your country or city) then Click “**Apply**” button.

<b>Set Time Zone :</b>	(GMT)Greenwich Mean Time: Dublin, Edinburgh, Lisbon, London
<b>Time Server Address :</b>	192.43.244.18
<b>Daylight Savings :</b>	<input type="checkbox"/> Enable Function Times From January 1 To January 1
<div>Apply Cancel</div>	

5. Select “**PPPoE xDSL**”, the system will move into next step





6. Enter the “**User Name**” and “**Password**” that ISP provided and leave the others. (The “**Service Name**” can be blank) and click “**OK**” to save the setting then reboot the router

7. After reboot, your router is now ready for Internet connection.

## 2.2 Router Configuration - Cable Modem

1. The following example is for U.K. Click on “Quick Setup”.

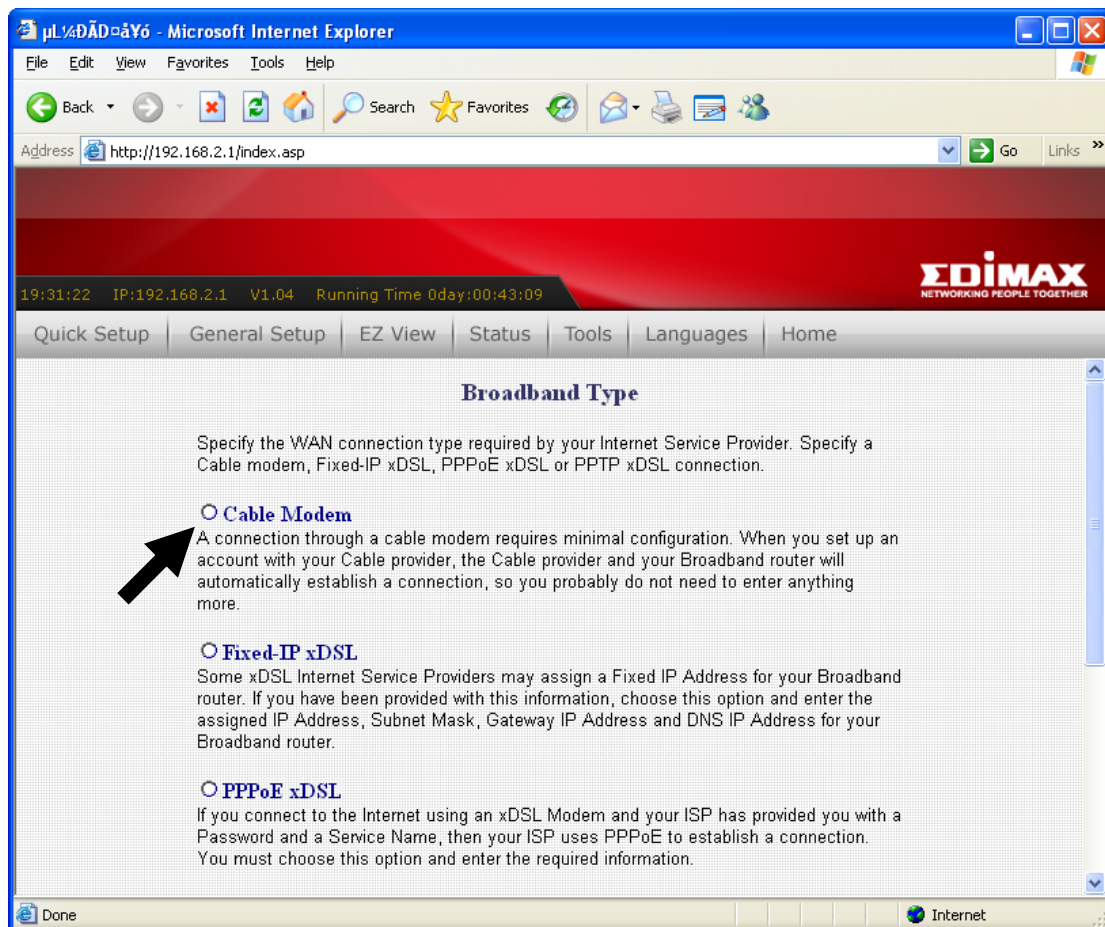


2. Select '(GMT) Greenwich Mean Time : "London"'. Click “Next” button.

<b>Set Time Zone :</b>	(GMT)Greenwich Mean Time: Dublin, Edinburgh, Lisbon, London ▼
<b>Time Server Address :</b>	192.43.244.18
<b>Daylight Savings :</b>	<input type="checkbox"/> Enable Function Times From January ▼ 1 ▼ To January ▼ 1 ▼
<div>Apply Cancel</div>	



3. Select “**Cable Modem**”, the system will move into next step



4. Enter “**Host Name**” and “**MAC Address**”. (The “**Host Name**” can be blank)  
The MAC Address is provided by ISP (e.g. NTL) or click “**Clone Mac Address**” button if you’re using the computer’s MAC Address.  
Confirm with your ISP about MAC Address used, Click “**OK**” button to save the settings then reboot the router.

Host Name :	<input type="text"/>
MAC address :	<input type="text" value="000000000000"/>
	<input type="button" value="Clone Mac address"/>
TTL :	<input checked="" type="radio"/> Disabled <input type="radio"/> Enabled
<input type="button" value="Back"/> <input type="button" value="OK"/>	

5. After reboot, your router is now ready for Internet connection.

## 3 Advanced Setup

### 3-1 Change management password

Default password of this router is 1234, and it's displayed on the login prompt when accessed from web browser. There's a security risk if you don't change the default password, since everyone can see it.

To change password, please follow the following instructions:

Please click '**General Setup**' \ '**System**', then click '**Password Settings**', and the following message will be displayed on your web browser:



<b>Current Password :</b>	<input type="text"/>
<b>New Password :</b>	<input type="text"/>
<b>Confirmed Password :</b>	<input type="text"/>

Here are descriptions of every setup items:

---

Current Password	Please input current password here.
New Password	Please input new password here.
Confirm Password	Please input new password here again.

---

When you finish, click '**Apply**'; If you want to keep original password unchanged, click '**Cancel**'.

## 3-2 Firmware Upgrade

The system software used by this router is called as 'firmware', just like any applications on your computer, when you replace the old application with a new one, your computer will be equipped with new function. You can also use this firmware upgrade function to add new functions to your router, even fix the bugs of this router.

To upgrade firmware, please follow the following instructions:

Please click '**Tool**' and '**Firmware Upgrade**' on the left of web management interface, then the following message will be displayed on your web browser:



<input type="radio"/>	<b>Configuration Tools</b>	Use the "Backup" tool to save the Broadband router's current configurations to a file named "config.bin". You can then use the "Restore" tool to restore the saved configuration to the Broadband router. Alternatively, you can use the "Restore to Factory Default" tool to force the Broadband router to perform System Reset and restore the original factory settings.
<input type="radio"/>	<b>Firmware Upgrade</b>	This tool allows you to upgrade the Broadband router's system firmware. Enter the path and name of the upgrade file and then click the APPLY button below. You will be prompted to confirm the upgrade. The system will automatically reboot the router after you finished the firmware upgrade process. If you don't complete the firmware upgrade process in the "next" step, you have to reboot the router.
<input type="radio"/>	<b>Restart</b>	In the event that the system stops responding correctly or stops functioning, you can perform a Reset. Your settings will not be changed. To perform the reset, click on the APPLY button below. You will be asked to confirm your decision. The Reset will be complete when the LED Power light stops blinking.

Click '**Browse**' button first, you'll be prompted to provide the filename of firmware upgrade file. Please download the latest firmware file from our website, and use it to upgrade your router.

<input type="text"/>	<input type="button" value="Browse..."/>
<input type="button" value="Apply"/> <input type="button" value="Cancel"/>	

After a firmware upgrade file is selected, click '**Apply**' button, and the router will start firmware upgrade procedure automatically. The procedure may take several minutes, please be patient.

NOTE: Never interrupt the upgrade procedure by closing the web browser or physically disconnect your computer from router. If the firmware you uploaded is corrupt, the firmware upgrade will fail, and you may have to return this router to the dealer of purchase to ask for help. (Warranty voids if you interrupted the upgrade procedure).

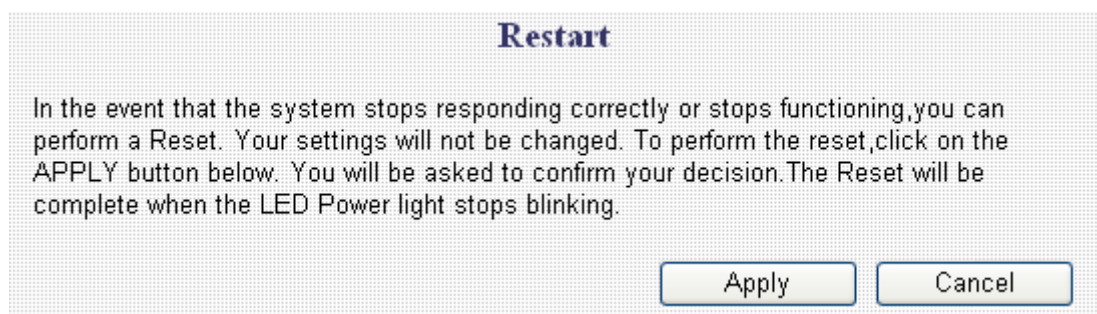
NOTE: It's recommended to use wired Ethernet connection to upload the firmware file, please refrain from using wireless connection to upload the firmware file. Also, please do not switch the broadband router or computer you used to upload the firmware file off during firmware upgrade. This will *cause* broadband router become malfunction and unusable.

### 3-3 Restart and Reset to Default Setting

If you found the router behaves strangely, you can perform a reset, sometimes it will solve the problem.

You can either reset your router without losing your current settings or restore to factory defaults. If you wish to reset the router to the factory default settings, select **"Factory Default Settings"** then click **"Restart"**.

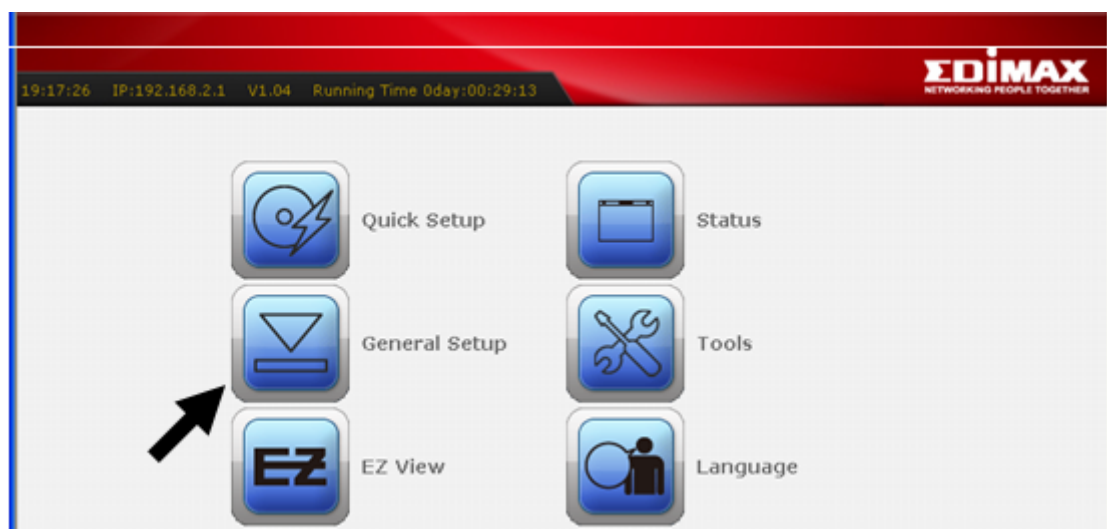
Alternatively, you can use the Reset button at the Real Panel of the router.



Please click **'Apply'** to reset your router, and it will be available again after few minutes, please be patient.

### 3-4 Wireless Setup

Please click **'General Setup' \ 'Wireless'**





SSID is the name of the wireless router. You may change your SSID to a meaningful name so that you can identify your wireless router from others. You can use any alphanumeric characters, up to 32 characters. By default the ESSID is 'default'.

 The image shows a form for wireless settings. It has five rows: 'Mode' with a dropdown set to 'AP', 'Band' with a dropdown set to '2.4 GHz (B+G+N)', 'ESSID' with a text box containing 'default', 'Channel Number' with a dropdown set to '11', and 'Associated Clients' with a 'Show Active Clients' button. At the bottom are 'Apply' and 'Cancel' buttons. A black arrow points to the 'ESSID' text box.

***It's very important to set wireless security settings properly!*** If you don't, hackers and malicious users can reach your network and valuable data without your consent and this will cause serious security problem.

It's recommended to use WPA to protect your wireless router from hackers. Select '**Security Settings**' \ '**WPA-Pre-Shared Key**' and enter the Pre-Share Key below.

Use 8-32 alphanumeric characters. Please remember this key, you need this key to connect to your wireless router wirelessly.

***It's not recommended to use a word that can be found in a dictionary due to security reason.***

<input type="radio"/>	<b>Basic Settings</b>	This page allows you to define ESSID, and Channel for the wireless connection. These parameters are used for the wireless stations to connect to the Access Point.
<input type="radio"/>	<b>Security Settings</b>	This page allows you setup the wireless security. Turn on WEP or WPA by using Encryption Keys could prevent any unauthorized access to your wireless network.
<input type="radio"/>	<b>MAC Address Filtering</b>	For security reason, the Access Point features MAC Address Filtering that only allows authorized MAC Addresses associating to the Access Point.
<input type="radio"/>	<b>WPS(Wi-Fi Protected Setup) Settings</b>	This page allows you to change the setting for WPS(Wi-Fi Protected Setup).WPS can help your wireless client automatically connect to the Access Point.

Encryption :	<input type="text" value="WPA pre-shared key"/>
WPA Unicast Cipher Suite :	<input checked="" type="radio"/> WPA(TKIP) <input type="radio"/> WPA2(AES)
Pre-shared Key Format :	<input type="text" value="Passphrase"/>
Pre-shared Key :	<input type="text"/>

**Note:** Please refer to the User Manual in the CD-ROM for more details information on Internet connection type and to configure all others setting.



### **Federal Communication Commission Interference Statement**

This equipment has been tested and found to comply with the limits for a Class B digital device, pursuant to Part 15 of FCC Rules. These limits are designed to provide reasonable protection against harmful interference in a residential installation. This equipment generates, uses, and can radiate radio frequency energy and, if not installed and used in accordance with the instructions, may cause harmful interference to radio communications. However, there is no guarantee that interference will not occur in a particular installation. If this equipment does cause harmful interference to radio or television reception, which can be determined by turning the equipment off and on, the user is encouraged to try to correct the interference by one or more of the following measures:

1. Reorient or relocate the receiving antenna.
2. Increase the separation between the equipment and receiver.
3. Connect the equipment into an outlet on a circuit different from that to which the receiver is connected.
4. Consult the dealer or an experienced radio technician for help.

### **FCC Caution**

This device and its antenna must not be co-located or operating in conjunction with any other antenna or transmitter.

This device complies with Part 15 of the FCC Rules. Operation is subject to the following two conditions: (1) this device may not cause harmful interference, and (2) this device must accept any interference received, including interference that may cause undesired operation.

Any changes or modifications not expressly approved by the party responsible for compliance could void the authority to operate equipment.

### **Federal Communications Commission (FCC) Radiation Exposure Statement**

This equipment must be installed and operated in accordance with provided instructions and a minimum 20 cm spacing must be provided between computer mounted antenna and person's body (excluding extremities of hands, wrist and feet) during wireless modes of operation.

The equipment version marketed in US is restricted to usage of the channels 1-11 only.

### **R&TTE Compliance Statement**

This equipment complies with all the requirements of DIRECTIVE 1999/5/EC OF THE EUROPEAN PARLIAMENT AND THE COUNCIL of March 9, 1999 on radio equipment and telecommunication terminal Equipment and the mutual recognition of their conformity (R&TTE)

The R&TTE Directive repeals and replaces in the directive 98/13/EEC (Telecommunications Terminal Equipment and Satellite Earth Station Equipment) As of April 8, 2000.

### **Safety**

This equipment is designed with the utmost care for the safety of those who install and use it. However, special attention must be paid to the dangers of electric shock and static electricity when working with electrical equipment. All guidelines of this and of the computer manufacture must therefore be allowed at all times to ensure the safe use of the equipment.

### **EU Countries Intended for Use**

The ETSI version of this device is intended for home and office use in Austria, Belgium, Denmark, Finland, France, Germany, Greece, Ireland, Italy, Luxembourg, Bulgaria, Cyprus, Czech Republic, Estonia, Hungary, Latvia, Lithuania, Malta, Poland, Romania, Slovakia, Slovenia, the Netherlands, Portugal, Spain, Sweden, and the United Kingdom.

The ETSI version of this device is also authorized for use in EFTA member states: Iceland, Liechtenstein, Norway, and Switzerland.

### **EU Countries not intended for use**

None

A declaration of conformity is available on [www.edimax.com](http://www.edimax.com)







**EDIMAX Technology Co., Ltd.**  
[www.edimax.com](http://www.edimax.com)