

150Mbps Wireless ADSL2/2+ Modem Router

AR-7284WnA / AR-7284WnB
Quick Installation Guide

Version 1.0 / October, 2009





Copyright© by Edimax Technology Co, LTD. all rights reserved. No part of this publication may be reproduced, transmitted, transcribed, stored in a retrieval system, or translated into any language or computer language, in any form or by any means, electronic, mechanical, magnetic, optical, chemical, manual or otherwise, without the prior written permission of this company

This company makes no representations or warranties, either expressed or implied, with respect to the contents hereof and specifically disclaims any warranties, merchantability or fitness for any particular purpose. Any software described in this manual is sold or licensed "as is". Should the programs prove defective following their purchase, the buyer (and not this company, its distributor, or its dealer) assumes the entire cost of all necessary servicing, repair, and any incidental or consequential damages resulting from any defect in the software. Further, this company reserves the right to revise this publication and to make changes from time to time in the contents hereof without obligation to notify any person of such revision or changes.

The product you have purchased and the setup screen may appear slightly different from those shown in this QIG. For more detailed information about this product, please refer to the User Manual on the CD-ROM. The software and specifications are subject to change without notice. Please visit our web site www.edimax.com for the update. All rights reserved including all brand and product names mentioned in this manual are trademarks and/or registered trademarks of their respective holders.

Notice according to GNU/GPL-Version 2

This product includes software that is subject to the GNU/GPL-Version 2. You find the text of the license on the product cd/dvd. The program is free software and distributed without any warranty of the author. We offer, valid for at least three years, to give you, for a charge no more than the costs of physically performing source distribution, a complete machine-readable copy of the corresponding source code.

Please contact Edimax at: Edimax Technology co., Ltd, NO. 3, Wu-Chuan 3rd RD
Wu-Ku-Industrial Park, Taipei Hsien, Taiwan. R.O.C., TEL : +886-2-77396888,
FAX : +886-2-77396887, sales@edimax.com.tw

Multi-Languages QIG on the CD

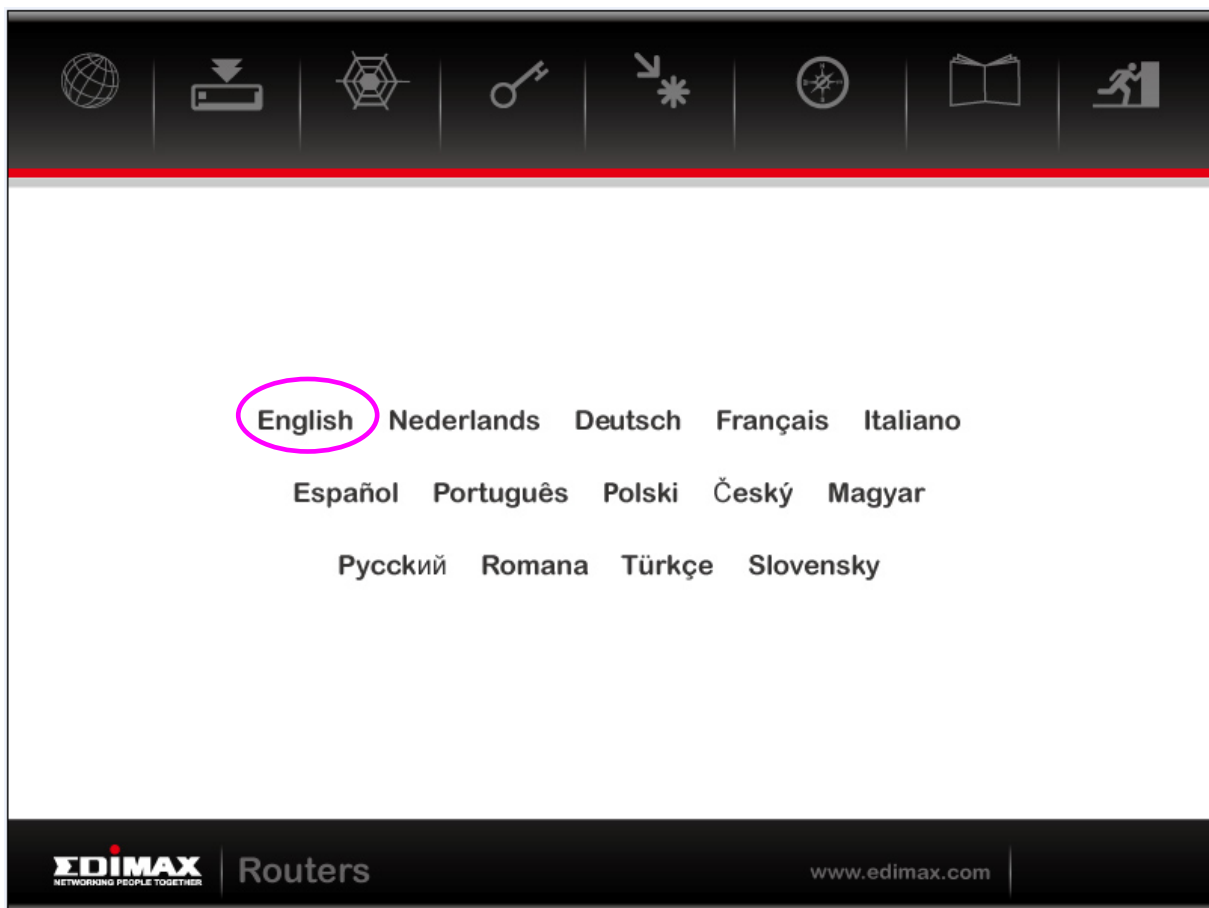
Český	Českého průvodce rychlou instalací naleznete na přiloženém CD s ovladači.
Deutsch	Auf der beiliegend Treiber CD finden Sie deutsche Anleitung zur Schnellinstallation.
Español	Incluido en el CD el G.R.I. en Español.
Français	Veuillez trouver l'français G.I.R ci-joint dans le CD.
Italiano	Incluso nel CD il Q.I.G. in Italiano.
Magyar	A magyar telepítési útmutató megtalálható a mellékelt CD-n.
Nederlands	De nederlandse Q.I.G. treft u aan op de bijgesloten CD
Polski	Skrócona instrukcja instalacji w języku polskim znajduje się na załączonej płycie CD.
Português	Incluído no CD o G.I.R. em Portugues.
Русский	Найдите Q.I.G. на русском языке на приложенном CD.
Romania	Cd-ul cuprinde Ghid de instalare rapida in limba romana.
Türkçe	Ürün ile beraber gelen CD içinde Türkçe Hızlı Kurulum Kılavuzu'nu bulabilirsiniz.

Product Introduction

Thank you for purchasing an Edimax product. This router is a high speed wireless 150Mbps ADSL2/2+ modem router. You can surf the Internet and share the connection through the Edimax router without investing in other devices.

You can configure the router by running the Setup Wizard in the CD-ROM provided in the package. The wizard provides quick setup for the Internet connection, SSID, wireless security, firmware upgrade and changing router's password. When you start the Setup Wizard, you will get the following Welcome screen. Please choose the language to start with and follow the easy steps in the Wizard. No instruction for the Setup Wizard is given here.

If you lost the CD-ROM or you prefer the traditional web setup, please follow the procedures in this Quick Installation Guide to configure the router.



1. Minimum Requirements

The following devices are required to configure the ADSL2+ Router:

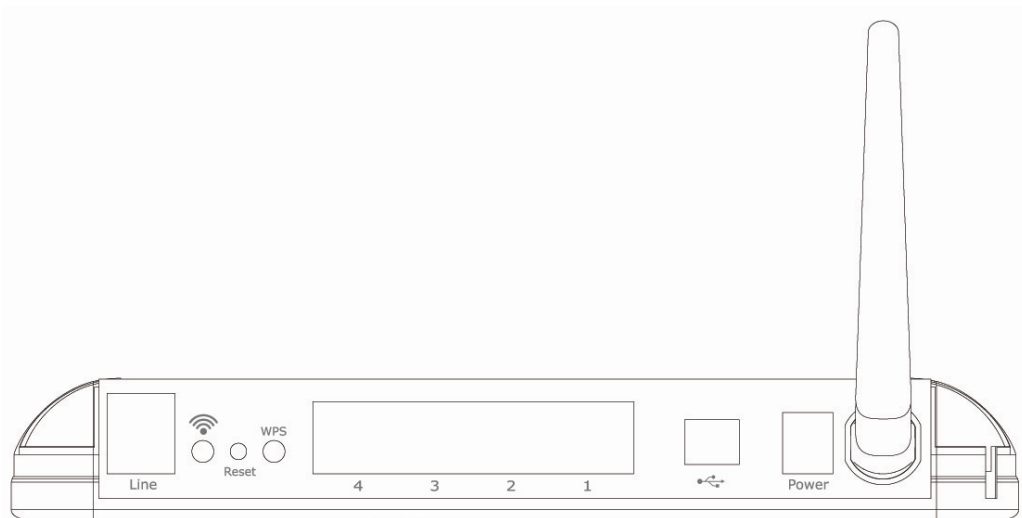
- A PC with an Ethernet Adapter and a Web-Browser (Internet Explorer 4.0 or higher)
- ADSL Line
- RJ-45 Ethernet cable and RJ-11 Phone Line

2. Product Package

This package contains the following components:

- One ADSL2+ Router (Annex A or B)
- 3dBi Antenna x 1 pcs
- Power Adapter
- RJ-45 Ethernet Cable
- RJ-11 Telephone Line
- Quick Installation Guide
- CD-ROM (Including the Setup Wizard, Multi-languages Quick Installation Guide and User Manual)
- Holding Base

Rear Panel



1) Antenna Connectors

The antenna connector of the router is a reverse SMA connector. It allows you to connect an external antenna with reverse SMA connector to the router easily.

2) Reset

The Reset button can be used to restore to factory defaults.

- If problems persisted or you forgot your router's password, press the reset button for 10 seconds with power on. The router will reset to the factory default settings. (**Warning** : all your current settings will be lost and replaced by the factory default settings)

3) WPS

Press the WPS button 2~4 seconds to activate the wireless protection.

4) Power Jack

Please plug-in the supplied power adapter to the ADSL Router's power jack. The power adapter is 12V.

5) Local Area Network (LAN)

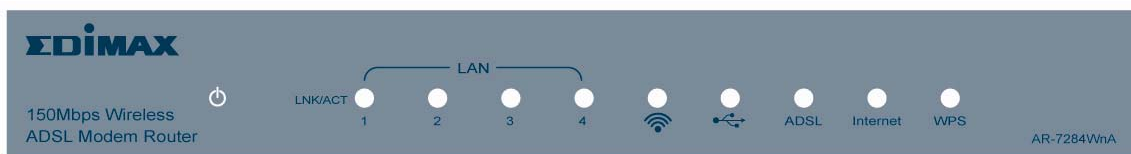
The router's 4 LAN ports are where you connect your LAN's PCs, printer servers, hubs and switches etc.




6) ADSL

Connect the supplied RJ-11 telephone cable to this port and connect it to your ADSL/telephone socket .

Front LEDs

On the router's front panel, there are LED lights showing the router's current status. Below are the description and explanation of each LED.



LED	Light Status	Description
PWR 	On	The router is ready
WLAN 	Off	Wireless LAN is disabled
(Yellow)	Blinking	Wireless network traffic is transmitting
WPS 	Off	WPS function is disabled
(Yellow)	Blinking	WPS function is enabled
ADSL	On	Connected to an ADSL broadband connection successfully
(Green)	Blinking	No ADSL broadband connection
LAN	On	The LAN cable is connected to the router
(Port 1-4)	Blinking	Network traffic is transmitting through the LAN port

3 Install ADSL Router

Step 1. Connect the ADSL Line

Use the supplied RJ-11 telephone cable, connect the router from the ADSL port to your telephone socket with an ADSL micro filter plugged in.

Step 2. Connect the router to your LAN network

Connect the router to your PC, hub or switch by attached the Ethernet cable to the LAN port of the router.



Step 3. Connect the Power Adapter to the Router

Connect the power adapter to the power jack on the rear panel of the router and switch on the power.

Step 4. Check the ADSL LED light status

Please check the ADSL LED on the front panel. This light indicates the status of your ADSL broadband through your telephone line. If the light is on solid, you can continue the setup. However, if the light is flashing, there is no broadband line being detected. Therefore, please call your Internet Service Provider (ISP) and inform them about the flashing ADSL light.

Step 5. Firewall settings.

Please turn off all personal firewall before you continue the setup as they might block the communication of your PC and the router.

Note : *You must use the power adapter shipped along with the router, do NOT use any other power adapter from other sources.*

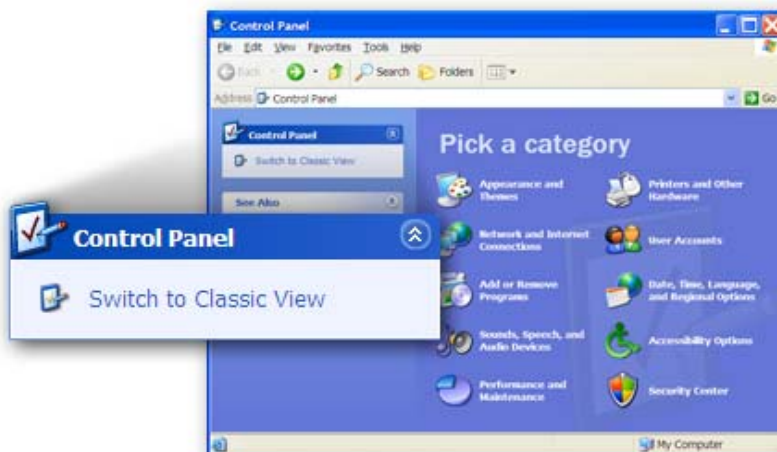
Step6 : PC LAN IP Configuration

1. Configure the PC LAN setting to automatically obtain an IP address from the router by following the below steps.

- Click **“Start”** in the task bar then select the **“Control Panel”** .



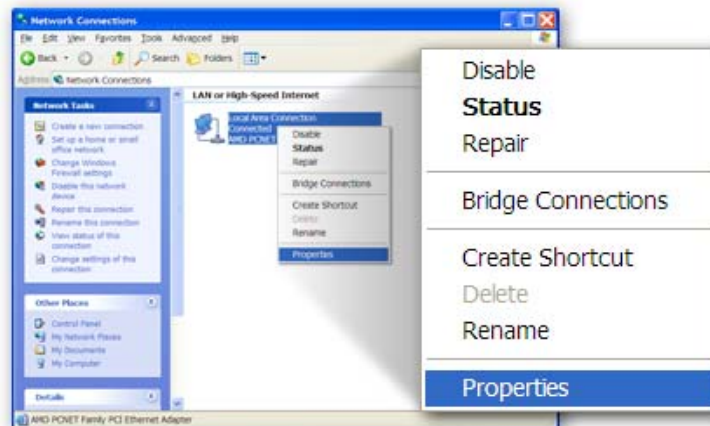
- Click **“Switch to Classic View”** on the left top to see more setting icons.



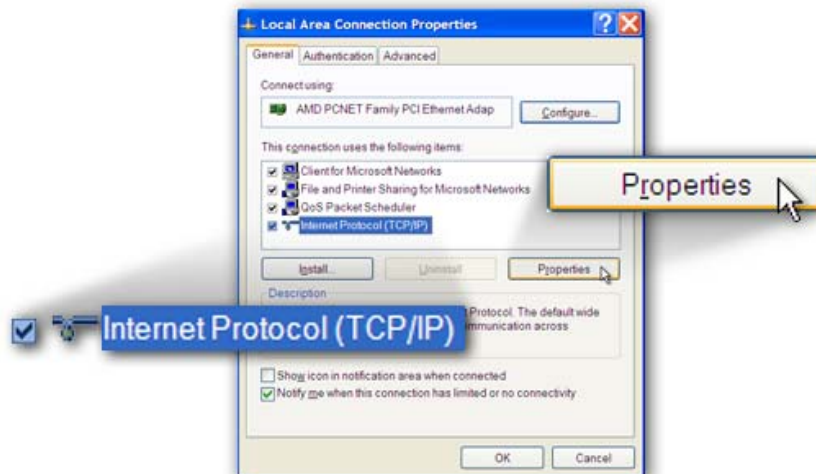
- Find an icon **“Network Connection”** then Double-Click to open the network connection setting.



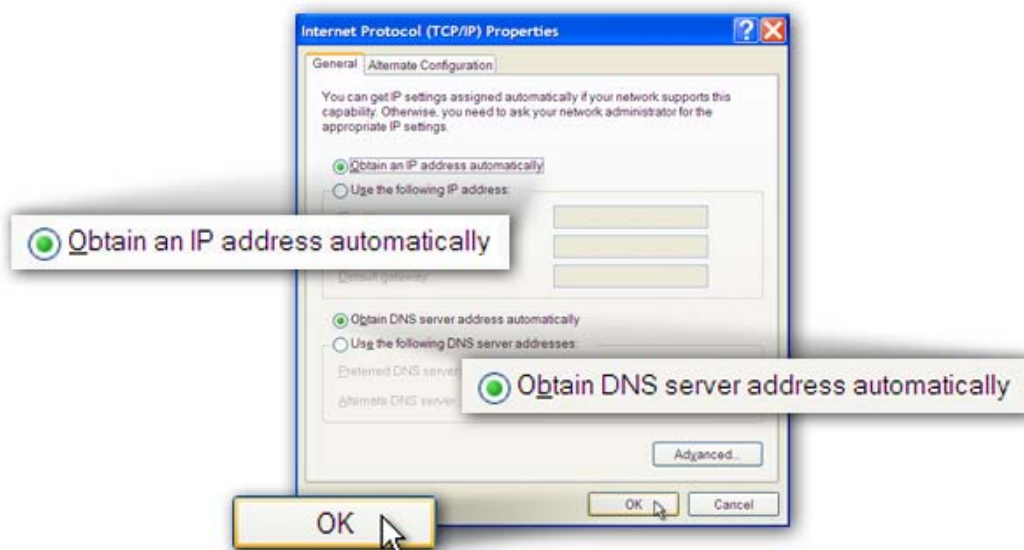
- You will see an icon “**Local Area Connection**”, select the icon then Right-Click the mouse to open the sub-menu and select the “**Properties**”



- Select the “**Internet Protocol (TCP/IP)**” then click the “**Properties**”



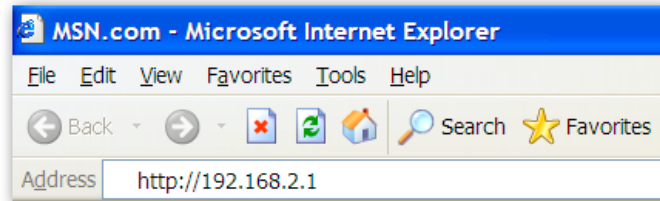
- Ensure the parameter marked in blue are checked in “**Obtain an IP address automatically**” and “**Obtain DNS server address automatically**” then press “**OK**” to close.



4 Internet Connection

If you lost your CD-ROM, you can configure this ADSL modem router via the following procedures. The procedures will guide you to login to your modem router using the Internet Explorer, so that you can set up the Internet connection and configure all others function.

1. Enter the router's default IP address: "**192.168.2.1**" into your PC's web browser and press "**enter**".



2. The login screen below will appear. Enter the "User Name" and "Password" and click "**OK**" to login.

The default User name is "**admin**" and the Password is "**1234**",



The main page will appear, click "**Quick Setup**" to setup the Internet connection.

Note: Please refer to the User Manual in the CD-ROM for more details information on Internet connection type and to configure all others setting.

Federal Communication Commission Interference Statement

This equipment has been tested and found to comply with the limits for a Class B digital device, pursuant to Part 15 of FCC Rules. These limits are designed to provide reasonable protection against harmful interference in a residential installation. This equipment generates, uses, and can radiate radio frequency energy and, if not installed and used in accordance with the instructions, may cause harmful interference to radio communications. However, there is no guarantee that interference will not occur in a particular installation. If this equipment does cause harmful interference to radio or television reception, which can be determined by turning the equipment off and on, the user is encouraged to try to correct the interference by one or more of the following measures:

1. Reorient or relocate the receiving antenna.
2. Increase the separation between the equipment and receiver.
3. Connect the equipment into an outlet on a circuit different from that to which the receiver is connected.
4. Consult the dealer or an experienced radio technician for help.

FCC Caution

This device and its antenna must not be co-located or operating in conjunction with any other antenna or transmitter.

This device complies with Part 15 of the FCC Rules. Operation is subject to the following two conditions: (1) this device may not cause harmful interference, and (2) this device must accept any interference received, including interference that may cause undesired operation.

Any changes or modifications not expressly approved by the party responsible for compliance could void the authority to operate equipment.

Federal Communications Commission (FCC) Radiation Exposure Statement

This equipment complies with FCC radiation exposure set forth for an uncontrolled environment. In order to avoid the possibility of exceeding the FCC radio frequency exposure limits, human proximity to the antenna shall not be less than 2.5cm (1 inch) during normal operation.

Federal Communications Commission (FCC) RF Exposure Requirements

SAR compliance has been established in the laptop computer(s) configurations with PCMCIA slot on the side near the center, as tested in the application for Certification, and can be used in laptop computer(s) with substantially similar physical dimensions, construction, and electrical and RF characteristics. Use in other devices such a PDAs or lappads is not authorized.

This transmitter is restricted for use with the specific antenna tested in the application for Certification. The antenna(s) used for this transmitter must not be co-located or operating in conjunction with any other antenna or transmitter.

R&TTE Compliance Statement

This equipment complies with all the requirements of DIRECTIVE 1999/5/EC OF THE EUROPEAN PARLIAMENT AND THE COUNCIL of March 9, 1999 on radio equipment and telecommunication terminal Equipment and the mutual recognition of their conformity (R&TTE)

The R&TTE Directive repeals and replaces in the directive 98/13/EEC (Telecommunications Terminal Equipment and Satellite Earth Station Equipment) As of April 8, 2000.

Safety

This equipment is designed with the utmost care for the safety of those who install and use it. However, special attention must be paid to the dangers of electric shock and static electricity when working with electrical equipment. All guidelines of this and of the computer manufacture must therefore be allowed at all times to ensure the safe use of the equipment.

EU Countries Intended for Use

The ETSI version of this device is intended for home and office use in Austria, Belgium, Denmark, Finland, France, Germany, Greece, Ireland, Italy, Luxembourg, Bulgaria, Cyprus, Czech Republic, Estonia, Hungary, Latvia, Lithuania, Malta, Poland, Romania, Slovakia, Slovenia, the Netherlands, Portugal, Spain, Sweden, and the United Kingdom.

The ETSI version of this device is also authorized for use in EFTA member states: Iceland, Liechtenstein, Norway, and Switzerland.

EU Countries not intended for use

None

A declaration of conformity is available on www.edimax.com





EDIMAX Technology Co., Ltd.

www.edimax.com