

Wireless 3G Portable Router

3G-6210n Quick Installation Guide

Version 1.0 / August, 2009



Multi-Languages QIG on the CD

Český	Českého průvodce rychlou instalací naleznete na přiloženém CD s ovladači.
Deutsch	Auf der beiliegend Treiber CD finden Sie deutsche Anleitung zur Schnellinstallation.
Español	Incluido en el CD el G.R.I. en Español.
Français	Veuillez trouver l'français G.I.R ci-joint dans le CD.
Italiano	Incluso nel CD il Q.I.G. in Italiano.
Magyar	A magyar telepítési útmutató megtalálható a mellékelt CD-n.
Nederlands	De nederlandse Q.I.G. treft u aan op de bijgesloten CD
Polski	Skrócona instrukcja instalacji w języku polskim znajduje się na załączonej płycie CD.
Português	Incluído no CD o G.I.R. em Portugues.
Русский	Русский: Найдите Q.I.G. на русском языке на приложенном CD.
Romania	Cd-ul cuprinde Ghid de instalare rapida in limba romana.
Türkçe	Ürün ile beraber gelen CD içinde Türkçe Hızlı Kurulum Kılavuzu'nu bulabilirsiniz.
繁/簡中	CD 片內含繁體中文及簡體中文快速安裝指南

Copyright© by Edimax Technology Co, LTD. all rights reserved. No part of this publication may be reproduced, transmitted, transcribed, stored in a retrieval system, or translated into any language or computer language, in any form or by any means, electronic, mechanical, magnetic, optical, chemical, manual or otherwise, without the prior written permission of this company .

This company makes no representations or warranties, either expressed or implied, with respect to the contents hereof and specifically disclaims any warranties, merchantability or fitness for any particular purpose. Any software described in this manual is sold or licensed "as is". Should the programs prove defective following their purchase, the buyer (and not this company, its distributor, or its dealer) assumes the entire cost of all necessary servicing, repair, and any incidental or consequential damages resulting from any defect in the software. Further, this company reserves the right to revise this publication and to make changes from time to time in the contents hereof without obligation to notify any person of such revision or changes.

The product you have purchased and the setup screen may appear slightly different from those shown in this QIG. For more detailed information about this product, please refer to the User Manual on the CD-ROM. The software and specifications are subject to change without notice. Please visit our web site www.edimax.com for the update. All rights reserved including all brand and product names mentioned in this manual are trademarks and/or registered trademarks of their respective holders .

Notice according to GNU/GPL-Version 2

This product includes software that is subject to the GNU/GPL-Version 2. You find the text of the license on the product cd/dvd. The program is free software and distributed without any warranty of the author. We offer, valid for at least three years, to give you, for a charge no more than the costs of physically performing source distribution, a complete machine-readable copy of the corresponding source code.

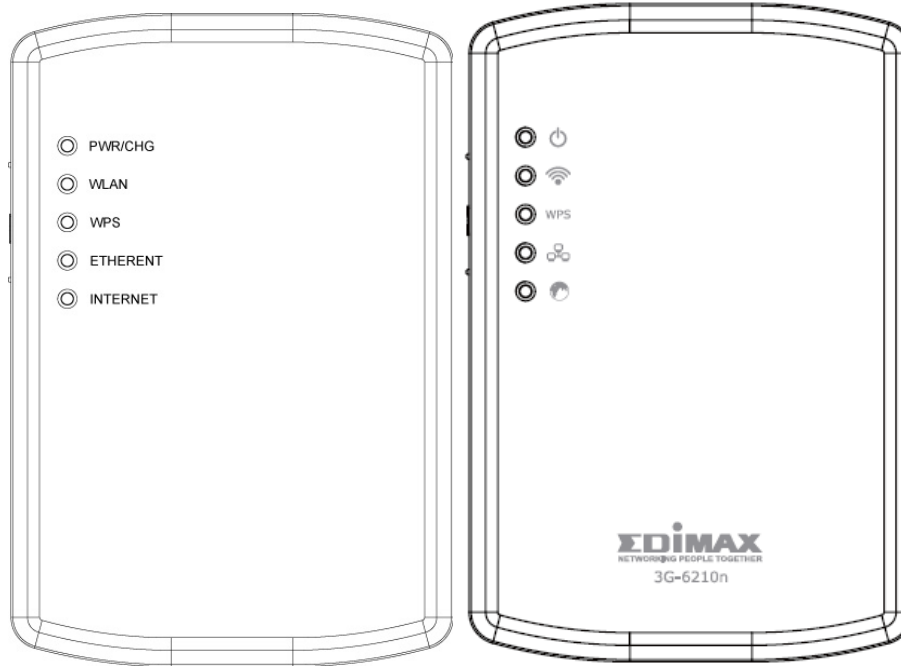
Please contact Edimax at: Edimax Technology co., Ltd, NO. 3, Wu-Chuan 3rd RD Wu-Ku-Industrial Park, Taipei Hsien, Taiwan. R.O.C., TEL : +886-2-77396888, FAX : +886-2-77396887, sales@edimax.com.tw

Package Contents

Before you starting to use this router, please check if there's anything missing in the package, and contact your dealer of purchase to claim for missing items:

- ☐ 3G-6210n (main body, 1 pcs)
- ☐ Quick Installation Guide (1 pcs)
- ☐ CD-ROM with EZmax Wizard, Multi-languages QIG and User Manual (1 pcs)
- ☐ Power Adapter (1 pcs)
- ☐ Ethernet Cable (1 pcs)
- ☐ Battery (1 pcs)

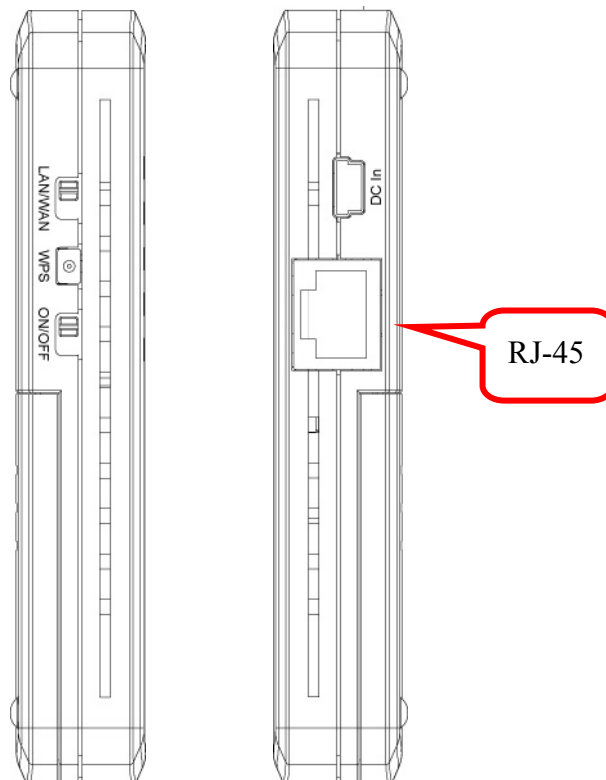
LED Definitions



LED Name	Light Status	Description
PWR/CHG	Green On	Router is switched on and correctly powered or the battery is charged completely.
	Orange On	The battery is charging.
	Orange Flashing	Battery power is not enough, only 30 minutes remains.
	Orange Flashing Fast	Battery power is not enough, only 10 minutes remains.
	Off	Router is powered off.
WLAN	Off	Wireless network is switched off.
	Flashing	Wireless LAN activity (transferring or receiving data).
WPS	On	Wireless WPS function is enabled.
	Off	Wireless WPS function is not enabled or the connection is successfully.
ETHERNET	On	ETHERNET port is connected.
	Off	ETHERNET port is not connected.

	Flashing	ETHERNET activity (transferring or receiving data).
INTERNET	On	Router is connected to the Internet.
	Off	Router is not connected to the Internet.
	Flashing	Router is connecting to the Internet.

Right and Left Side Panel



Item Name	Description
LAN/WAN Switch	Switch the Ethernet port to LAN or WAN. Switch to WAN function if you want to access to the Internet through your xDSL or Cable modem network service. WAN access can also be a back up for 3G network. Please refer to Section 3-4 for more details.
WPS/Reset	Start WPS function or reset the router to factory default settings (clear all settings). Press this button and hold for over 10 seconds to restore all settings to factory defaults, or press this button for less than 5 seconds to start WPS function.
ON/OFF	Switch the button to activate or deactivate the router.
DC in	Connect the supplied power adapter to this mini USB port to charge the battery.
RJ-45 Port	Local/ Wide Area Network (LAN/WAN) port.

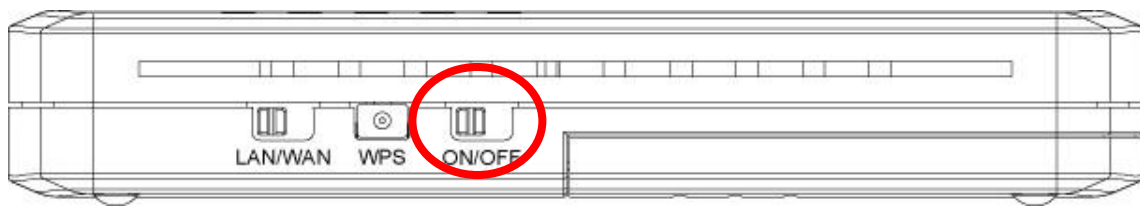
Getting Started

Before you using the 3G router, please follow the following instructions to charge the 3G router.

1. Remove the battery cover in the rear side of the router and insert the supplied battery into the slot and then put back the cover.
2. Connect the power adapter to the wall socket, and then connect it to the mini USB port of the router to charge the battery.

Note: It takes about four hours to charge the battery.

3. When the battery is charged, the 'Power' LED is lit in orange color. When the 'Power' LED is not lit, the battery is charged completely.
4. Switch the button to 'ON' to activate the router.

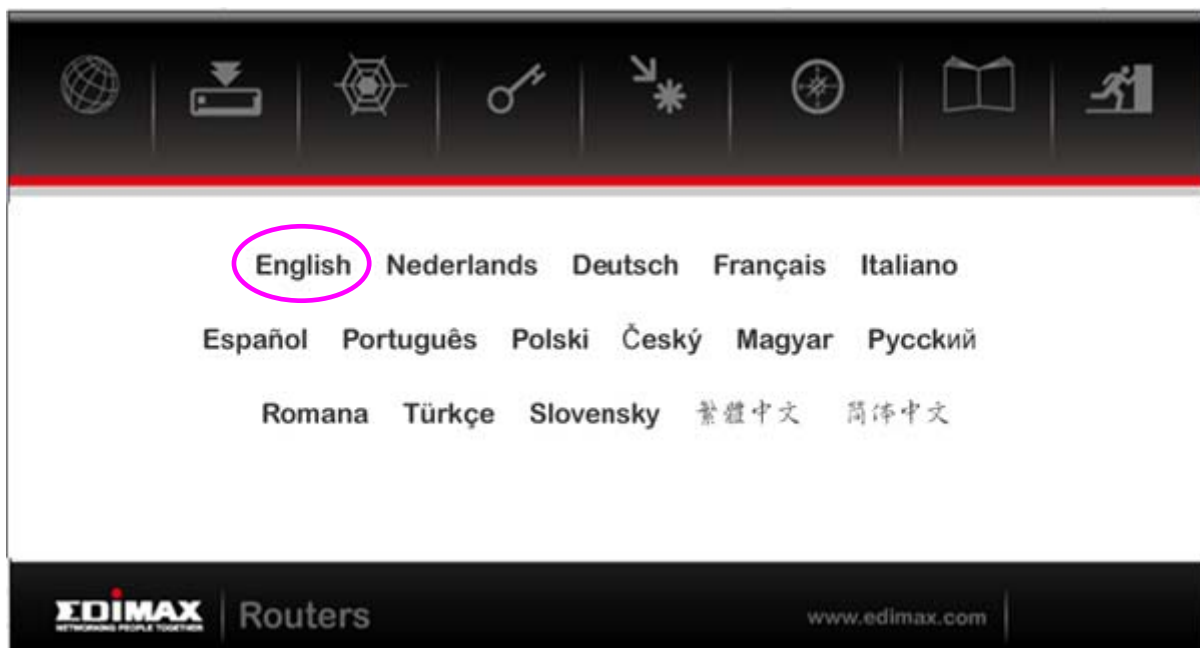


Warning:

1. Always switch the device off before removing the battery.
2. Use only battery and power adapter supplied with the product. The use of any other types may be dangerous.

You can configure the router by running the Setup Wizard in the CD-ROM provided in the package. The wizard provides quick setup for wireless 3G/3.5G Internet connection, Ethernet WAN Internet connection, SSID, wireless security, firmware upgrade and changing router's password. When you start the Setup Wizard, you will get the following Welcome screen. Please choose the language to start with and follow the easy steps in the Wizard. No instruction for the Setup Wizard is given here.

If you lost the CD-ROM or you prefer the traditional web setup, please follow the procedures in this Quick Installation Guide to configure the router.



Note 1: Only one Internet connection (wireless 3G or xDSL/Cable) can be used at the same time.

Note 2: To prevent the compatibility problem between 3G USB Modem and 3G router, it is recommended that you upgrade the latest firmware of 3G router from Edimax website <http://www.edimax.com>.

Build Network Connections

Please follow the following instructions to setup the 3G router:

1. Connect your 3G/3.5G USB modem to the USB port located on the top side of the router.
2. Connect your computer to the Ethernet port on the right side of the router for configuring the router.

Note: It is recommended to configure the router through the Ethernet port for the first time setup.

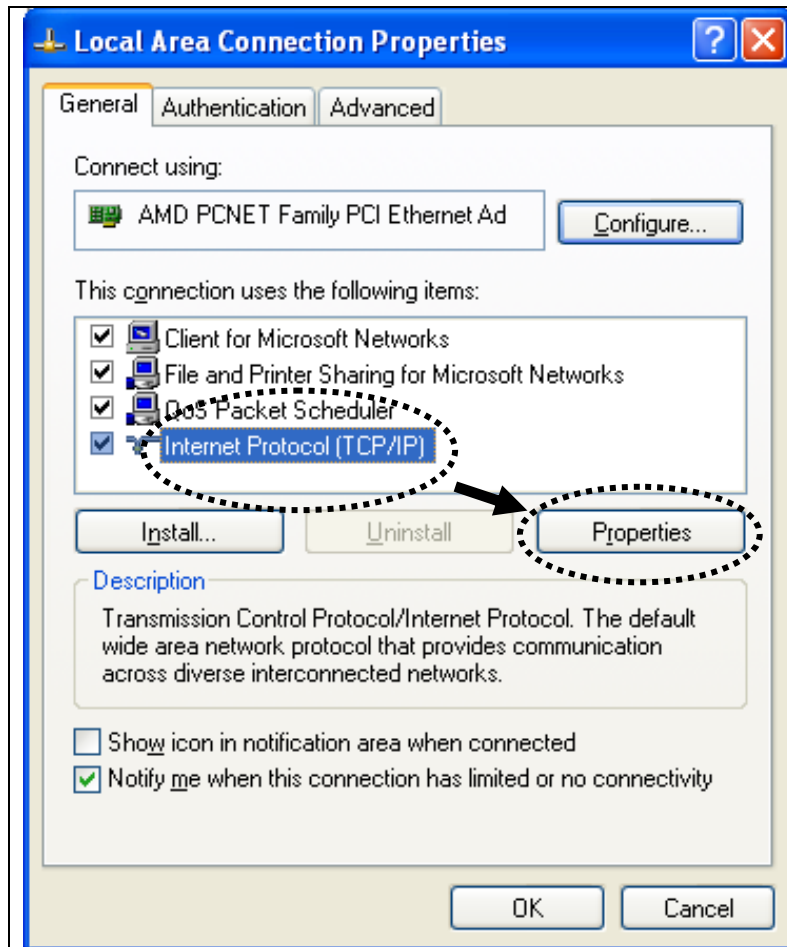


3. Please check all LEDs on the front side. 'PWR/CHR' LED should be steadily on in green color, and 'ETHERNET' LED should be on if the computer / network device connected to the Ethernet port of the router is powered on and correctly connected.

If 'PWR' LED is still off and you're sure that the battery and all cable connections are connected properly, please contact your dealer of purchase for assistance.

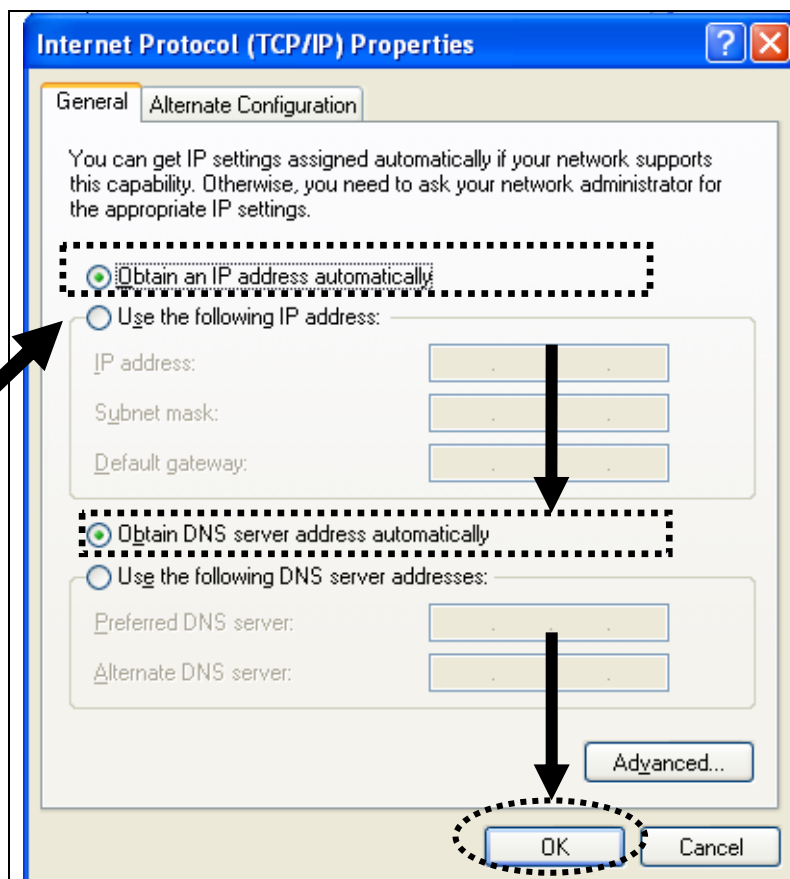
Network Setup

Please use the web browser to configure the 3G router.



1. Set your computer to obtain an IP address from wireless router: click 'Start' button (it should be located at lower-left corner of your computer), then click control panel. Double-click **Network Connections**, then double-click **Local Area Connection**. Click 'Properties'.

2. **Local Area Connection Properties** window will appear. Select **Internet Protocol (TCP/IP)**, then click 'Properties'.



3. Select '**Obtain an IP address automatically**' and '**Obtain DNS server address automatically**', then click '**OK**'.



4. Start the web browser and input the IP address of wireless router in address bar, and the following message should be shown. Please input user name and password, then click '**OK**' to access web management interface of wireless router.

Default user name:

admin

Default password: **1234**

5. For instructions of advanced settings and wireless network setup, please refer to user manual in supplied CD-ROM.

Note: Please refer to the User Manual in the CD-ROM for more details information on Internet connection type and to configure all others setting.

Federal Communication Commission Interference Statement

This equipment has been tested and found to comply with the limits for a Class B digital device, pursuant to Part 15 of FCC Rules. These limits are designed to provide reasonable protection against harmful interference in a residential installation. This equipment generates, uses, and can radiate radio frequency energy and, if not installed and used in accordance with the instructions, may cause harmful interference to radio communications.

However, there is no guarantee that interference will not occur in a particular installation. If this equipment does cause harmful interference to radio or television reception, which can be determined by turning the equipment off and on, the user is encouraged to try to correct the interference by one or more of the following measures:

1. Reorient or relocate the receiving antenna.
2. Increase the separation between the equipment and receiver.
3. Connect the equipment into an outlet on a circuit different from that to which the receiver is connected.
4. Consult the dealer or an experienced radio technician for help.

FCC Caution

This device and its antenna must not be co-located or operating in conjunction with any other antenna or transmitter.

This device complies with Part 15 of the FCC Rules. Operation is subject to the following two conditions: (1) this device may not cause harmful interference, and (2) this device must accept any interference received, including interference that may cause undesired operation.

Any changes or modifications not expressly approved by the party responsible for compliance could void the authority to operate equipment.

Federal Communications Commission (FCC) Radiation Exposure Statement

This equipment complies with FCC radiation exposure set forth for an uncontrolled environment. In order to avoid the possibility of exceeding the FCC radio frequency exposure limits, human proximity to the antenna shall not be less than 2.5cm (1 inch) during normal operation.

Federal Communications Commission (FCC) RF Exposure Requirements

SAR compliance has been established in the laptop computer(s) configurations with PCMCIA slot on the side near the center, as tested in the application for Certification, and can be used in laptop computer(s) with substantially similar physical dimensions, construction, and electrical and RF characteristics. Use in other devices such as PDAs or lappads is not authorized.

This transmitter is restricted for use with the specific antenna tested in the application for Certification. The antenna(s) used for this transmitter must not be co-located or operating in conjunction with any other antenna or transmitter.

R&TTE Compliance Statement

This equipment complies with all the requirements of DIRECTIVE 1999/5/EC OF THE EUROPEAN PARLIAMENT AND THE COUNCIL of March 9, 1999 on radio equipment and telecommunication terminal Equipment and the mutual recognition of their conformity (R&TTE)

The R&TTE Directive repeals and replaces in the directive 98/13/EEC (Telecommunications Terminal Equipment and Satellite Earth Station Equipment) As of April 8, 2000.

Safety

This equipment is designed with the utmost care for the safety of those who install and use it. However, special attention must be paid to the dangers of electric shock and static electricity when working with electrical equipment. All guidelines of this and of the computer manufacture must therefore be allowed at all times to ensure the safe use of the equipment.

EU Countries Intended for Use

The ETSI version of this device is intended for home and office use in Austria, Belgium, Denmark, Finland, France, Germany, Greece, Ireland, Italy, Luxembourg, Bulgaria, Cyprus, Czech Republic, Estonia, Hungary, Latvia, Lithuania, Malta, Poland, Romania, Slovakia, Slovenia, the Netherlands, Portugal, Spain, Sweden, and the United Kingdom.

The ETSI version of this device is also authorized for use in EFTA member states: Iceland, Liechtenstein, Norway, and Switzerland.

EU Countries not intended for use

None

A declaration of conformity is available on www.edimax.com





EDIMAX Technology Co., Ltd.
www.edimax.com