



Quick Installation Guide

RANGER SERIES 802.11AC 433Mbps Wireless Broadband Router

DG-BR4400AC



UP TO 433 Mbps

Copyright:

Copyright 2014 by Smartlink Network Systems Ltd. All rights reserved. No part of this publication may be reproduced, transmitted, transcribed, stored in a retrieval system, or translated into any language or computer language, in any form or by any means, electronic, mechanical, magnetic, optical, chemical, manual or otherwise, without the prior written permission of this company.

This company makes no representations or warranties, either expressed or implied, with respect to the contents hereof and specifically disclaims any warranties, merchantability or fitness for any particular purpose. Any software described in this manual is sold or licensed "as is". Should the programs prove defective following their purchase, the buyer (and not this company, its distributor, or its dealer) assumes the entire cost of all necessary servicing, repair and any incidental or consequential damages resulting from any defect in the software. Further, this company reserves the right to revise this publication and to make changes from time to time in the contents thereof without obligation to notify any person of such revision or changes.

Trademarks:

DIGISOL™ is a trademark of Smartlink Network Systems Ltd. All other trademarks are the property of the respective manufacturers.

Safety:

This equipment is designed with the utmost care for the safety of those who install and use it. However, special attention must be paid to the dangers of electric shock and static electricity when working with electrical equipment. All guidelines of this and of the computer manufacturer must therefore be allowed at all times to ensure the safe use of the equipment.

Package Contents

The following items should be present in your package:

- Wireless Broadband Router.
- Power Adapter (5V DC, 1.5A).
- Quick Installation Guide.
- Installation Guide CD (includes user manual & QIG).
- Patch cord (1 No.)
- Rubber Feet (4 Nos.)

Make sure that the package contains above items. If any of the listed items is damaged or missing, please contact your retailer immediately.

Product Overview

Thank you for purchasing this wireless concurrent dual band router. This cost-effective router is the best choice for Small office / Home office users, all computers and network devices can share a single xDSL / cable modem internet connection at high speed. Easy install procedures allow computer users to setup a network environment in very short time - within minutes, even inexperienced users. When the number of your computers and network-enabled devices grow, you can also expand the number of network slots by simply attaching a hub or switch, to extend the scope of your network.

With built-in both 2.4GHz and 5GHz radios, this router supports both of the IEEE 802.11b/g/n and 802.11a/n/ac wireless network capabilities simultaneously, all computers and wireless-enabled network devices (including PDA, Smart phone, Game console, Tablet and more) can connect to this wireless router without additional cabling. New 11ac wireless capability also gives you the highest speed of wireless experience ever. With a compatible wireless card installed in your PC, you can transfer files up to 300Mbps/433Mbps (transfer data rate). The radio coverage is also doubled, so don't worry if your office or house is really big.

Product Features

- Supports 2.4GHz and 5GHz wireless devices simultaneously.
- High wireless access throughput, up to 300Mbps/433Mbps (transfer data rate)
- Allows multiple users to share a single Internet line.
- Shares a single Cable or xDSL internet connection.
- Access private LAN servers from the internet.
- Four wired LAN ports (10/100M) and one WAN port (10/100M).

- Provides IEEE 802.11a/b/g/n/ac wireless LAN capability.
- Supports DHCP (Server/Client) for easy IP-address setup.
- Supports multiple wireless modes like: AP, Station-Infrastructure, Wireless Bridge and Universal Repeater.
- Advanced network and security features like: Special Applications, QoS, DMZ, Virtual Servers, Access Control, Firewall.
- Allows you to monitor the router's status like: DHCP Client Log, System Log, Security Log and Device/Connection Status.
- Easy to use Web-based GUI for network configuration and management purposes.
- Remote management function allows configuration and upgrades from a remote computer (over the Internet).
- Auto MDI / MDI-X function for all wired Ethernet ports.

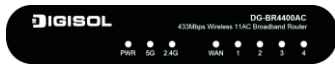
System Requirements

The following system requirements are recommended

- Internet connection, provided by xDSL or cable modem with a RJ-45 Ethernet port.
- Computer or network devices with wired or wireless network interface card.
- Web browser (Microsoft Internet Explorer, Google Chrome or Safari web browser).
- An available AC power outlet (100 - 240V, 50/60Hz)

Front Panel

Below shown is the product front view.



LED Name	Light Status	Description
PWR	On	Router is switched on and correctly powered.
	Off	Router is not powered.
5G	On	5GHz Wireless WPS function is enabled.
	Off	5GHz Wireless network is switched off.
	Flashing	5GHz Wireless LAN activity (transferring or receiving data).
2.4G	On	2.4GHz Wireless WPS function is enabled.
	Off	2.4GHz Wireless network is switched off.
	Flashing	2.4GHz Wireless LAN activity (transferring or receiving data).
WAN LNK/ACT	On	WAN port is connected.
	Off	WAN port is not connected.
	Flashing	WAN activity (transferring or receiving data).
LAN 1-4 LNK/ACT	On	LAN port is connected.
	Off	LAN port is not connected.
	Flashing	LAN activity (transferring or receiving data).

Rear Panel

- Below shown is the product rear view.

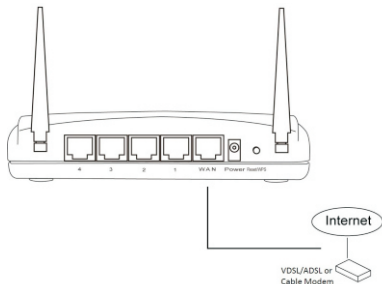


The following table describes interfaces and buttons on the rear panel.

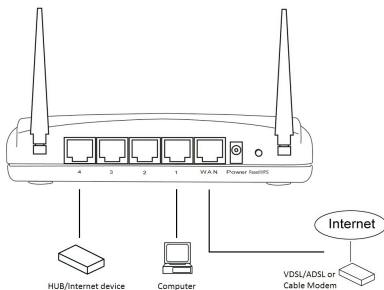
Item Name	Description
Antenna	It has two external dipole antennas.
LAN 1 - 4	Local Area Network (LAN) ports 1 to 4.
WAN	Wide Area Network (WAN / Internet) port.
Power	Power connector, connects to A/C power adapter.
Reset / WPS	Resets the router to factory default settings (clear all settings) or start WPS function. Press this button and hold for 10 seconds to restore all settings to factory defaults; press this button for less than 5 seconds to start 2.4GHz & 5GHz wireless WPS function.

Hardware Installation

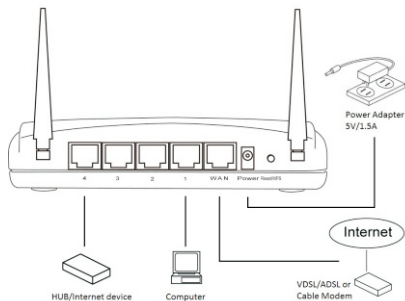
- 1 Connect your xDSL / Cable modem to the WAN port of the router by an Ethernet cable.



- 2 Connect all your computers, network devices (network-enabled consumer devices other than computers, like Game console, or Switch / Hub) to the LAN port of the router.



- 3 Connect the power adapter to the wall outlet, and then connect it to the 'Power jack' of the router.

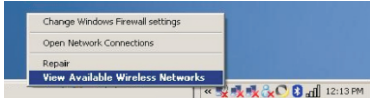


- 4 Please check all LEDs on the front panel. 'PWR' LED should be steadily on, WAN and LAN LEDs should be on if the computer / network device connected to the respective port of the router is powered on and correctly connected. If PWR LED is not on, or any LED you expected is not on, please recheck the cabling.

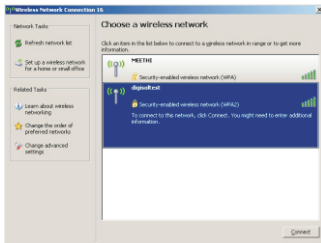
Connect to the router wirelessly

Users must configure their wireless notebook/desktop computer in order to establish a wireless connection to the router. The following instructions help in establishing a wireless connection between a Windows XP computer and the router.

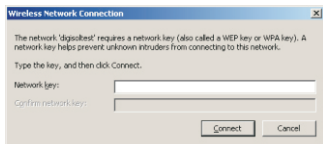
- Right click the wireless icon in the system tray and click on “View Available Wireless Networks”.



- A window displaying available wireless networks will open. Select the wireless network you wish to connect and then click on 'Connect'.

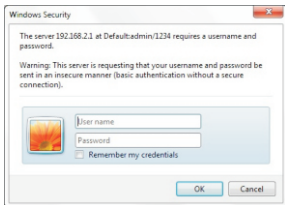


- Enter the network security key if the wireless network you wish to connect has wireless encryption enabled. Click 'Connect'. The connection should now get established.



Web Management of the router

- To access the web configuration of the router, assign a static IP address to your notebook/desktop computer in the subnet 192.168.2.X with the subnet mask 255.255.255.0 and gateway as 192.168.2.1. For example, assign the IP address 192.168.2.10.
- Open a web browser and enter "http://192.168.2.1" in the address bar, and press 'Enter'. A login screen will appear, assign username as "admin" and password as "1234". Press 'OK' to Log in.



- Following screen will appear on successful Login. You can now configure the router through this web management page.

DIGISOL™ DG-BR4400AC 433Mbps Wireless 11AC Broadband Router

Home General Setup Status Tools

Quick Setup

General Setup

Status

Tools

Quick Setup
The Quick Setup provides only the necessary configurations to connect your Wireless Router to your Internet Service Provider (ISP) through an external cable or a DSL modem.

General Setup
The Wireless Router supports advanced functions like Virtual Server, Access Control, Hacken Attack Detection and DMZ. We highly recommend you keep the default settings.

Status
The Wireless Router's status information provides the following information about your Wireless Router: Hardware/Firmware version, Serial Number, and its current operating status.

Tools
Wireless Router Tools - Tools include Configuration tool, Firmware upgrade and Reset Configuration tools allow you to Backup, Restore, or Restore to Factory Default settings for your Wireless Router. The Firmware upgrade tool allows you to upgrade your Wireless Router's firmware. The RESET tool allows you to reset your Wireless Router.

FAQ

Following are the solutions to problems that may occur during the installation and operation of the DIGISOL DG-BR4400AC Wireless Broadband Router.

1. Cannot login into the router.

- Verify whether username and password you entered is correct.
- If you have forgotten the password, then reset the router using reset button available on the rear side of the router.
- Please keep reset button pressed till the router reboots to reset to factory default settings. Now, you can try login into the router using default username and password.
- Ensure that you take the backup of the router configuration so you can restore the router back after resetting it.

2. Router cannot get connected to Internet.

- Access the router's web configuration and go to 'Status' -> 'Internet Connection Status' and verify Internet connection status.
- If you were previously able to connect a computer to Internet directly, try to do that again, and verify whether you can access Internet with your computer directly attached to the device provided by your Internet service provider.
Check PPPoE user ID and password again.
- Call your Internet Service Provider and verify whether there is some issue with their service.
- Try to reboot the router and verify whether it connects to Internet or not.
- Try to use IP address instead of hostname. If you can use IP address to communicate with a remote server, but can't use hostname, please check DNS setting.

3. Wireless client cannot locate the router.

- Verify whether 'SSID Broadcast' is set to off in router's web configuration.
- Verify whether the antenna is properly connected and in correct direction.
- Is your wireless client far away from your router? Try to get closer to the router.
- Ensure that you input ESSID on your wireless client manually, if SSID broadcast is disabled.

This product comes with lifetime warranty.
For further details about warranty policy and
product registration, please visit support
section of www.digisol.com



"PRODUCTS SOLD OUTSIDE INDIA CARRY 1 YEAR WARRANTY ONLY"



A product of Smartlink Network Systems Ltd

DIGISOL House, Plot No. 5,
Kurla Bandra Complex Road
Santacruz (E), Mumbai - 400 098, India.

Tel +91 22 3061 6666 / 2652 6696,
Fax +91 22 2652 8914

www.digisol.com

DIGICARE™
Service And Support



1800 209 3444

helpdesk@digisol.com
sales@digisol.com