



**Wired / Wireless LAN  
Broadband Router Series**

**Quick Installation Guide  
(Q.I.G.)**

Version 1.0 / April 2007

## Multi-Languages QIG on the CD

=====

**Český:** Českého průvodce rychlou instalací naleznete na přiloženém CD s ovladači

**Deutsch:** Finden Sie bitte das deutsche S.A.L. beiliegend in der Treiber CD

**Español:** Incluido en el CD el G.R.I. en Español.

**Français:** Veuillez trouver l'français G.I.R ci-joint dans le CD

**Italiano:** Incluso nel CD il Q.I.G. in Italiano.

**Magyar:** A magyar telepítési útmutató megtalálható a mellékelt CD-n

**Nederlands:** De nederlandse Q.I.G. treft u aan op de bijgesloten CD

**Polski:** Skrócona instrukcja instalacji w języku polskim znajduje się na załączonej płycie CD

**Português:** Incluído no CD o G.I.R. em Portugues

**Русский:** Найдите Q.I.G. на русском языке на приложенном CD

**Türkçe:** Ürün ile beraber gelen CD içinde Türkçe Hızlı Kurulum Kılavuzu'nu bulabilirsiniz

**Romana:** Cd-ul cuprinde Ghid de instalare rapida in limba romana



Copyright© by Edimax Technology Co, LTD. all rights reserved. No part of this publication may be reproduced, transmitted, transcribed, stored in a retrieval system, or translated into any language or computer language, in any form or by any means, electronic, mechanical, magnetic, optical, chemical, manual or otherwise, without the prior written permission of this company

This company makes no representations or warranties, either expressed or implied, with respect to the contents hereof and specifically disclaims any warranties, merchantability or fitness for any particular purpose. Any software described in this manual is sold or licensed "as is". Should the programs prove defective following their purchase, the buyer (and not this company, its distributor, or its dealer) assumes the entire cost of all necessary servicing, repair, and any incidental or consequential damages resulting from any defect in the software. Further, this company reserves the right to revise this publication and to make changes from time to time in the contents hereof without obligation to notify any person of such revision or changes.

The product you have purchased and the setup screen may appear slightly different from those shown in this QIG. For more detailed information about this product, please refer to the User's Manual on the CD-ROM. The software and specifications subject to change without notice. Please visit our web site [www.edimax.com](http://www.edimax.com) for the update. All right reserved including all brand and product names mentioned in this manual are trademarks and/or registered trademarks of their respective holders

#### Linux Open Source Code

Certain Edimax products include software code developed by third parties, including software code subject to the GNU General Public License ("GPL") or GNU Lesser General Public License ("LGPL"). Please see the **GNU** ([www.gnu.org](http://www.gnu.org)) and **LPGL** ([www.gnu.org](http://www.gnu.org)) Web sites to view the terms of each license.

The GPL Code and LGPL Code used in Edimax products are distributed without any warranty and are subject to the copyrights of their authors. For details, see the GPL Code and LGPL Code licenses. You can download the firmware-files at <http://www.edimax.com> under "Download" page.

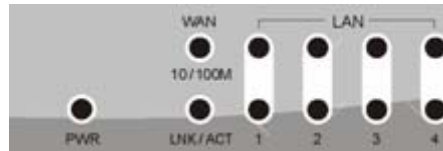
## 1 Introduction :

### 1-1 Package Contents

Before you starting to use this router, please check if there's anything missing in the package, and contact your dealer of purchase to claim for missing items :

- Broadband router (main body, 1 pcs)
- Quick installation guide (1 pcs)
- User manual CDROM (1 pcs)
- 12V Switching power adapter (1 pcs)
- Antenna (1pcs for 11g or 3 pcs for 11n Wireless Router Only )

### 1-2 Front Panel



PS : WLAN is for wireless router only .

| LED Name | Light Status | Description  |
|----------|--------------|--|
| PWR      | ON           | Router is switched on and correctly powered        |
| WLAN     | On           | Wireless network is switched on or WPS mode is on. |
|          | Off          | Wireless network is switched off                   |
|          | Flashing     | Wireless LAN activity (transferring data).         |
| WAN      | On           | WAN port (Internet) is running at 100Mbps          |
|          | Off          | WAN port (Internet) is running at 10Mbps           |

|         |          |                                  |
|---------|----------|----------------------------------|
| 10/100M | Flashing | WAN activity (transferring data) |
| WAN     | On       | WAN port is connected            |
|         | Off      | WAN port is not connected        |
| LNK/ACT | Flashing | WAN activity (transferring data) |
| LAN     | On       | LAN port is running at 100Mbps   |
| 10/100M | Off      | LAN port is running at 10Mbps    |
| LAN     | On       | LAN port is connected            |
|         | Off      | LAN port is not connected        |
| LNK/ACT | Flashing | LAN activity (transferring data) |

### 1-3 Back Panel



Antenna C

| Item Name | Description  |
|-----------|--|
| Power     | Power connector, connects to A/C power adapter   |
| Reset     | <p>The Reset button allows you to do one of two things :</p> <ol style="list-style-type: none"> <li>1) If problems occur with your router, press the router's reset button with a pencil tip (for less than 5 seconds) and the router will re-boot itself, keeping your original configurations.</li> <li>2) If problems persist or you experience extreme problems or you forgot your password, press the reset button for longer than 5 seconds and the router will reset itself to the</li> </ol> |

|       |   |
|-------|---|
|       | factory default settings ( <b>warning:</b> your original configurations will be replaced with the factory default settings) |
| 1 - 4 | Local Area Network (LAN) ports 1 to 4   |
| WAN   | Wide Area Network (WAN / Internet) port   |

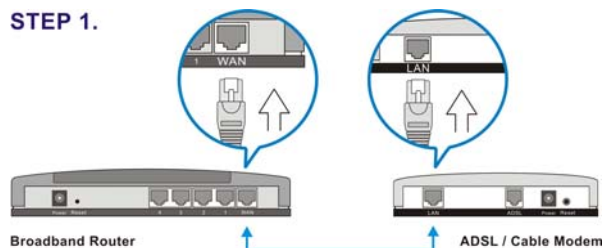
## 2 Network Setup

### Step 1: Getting Started

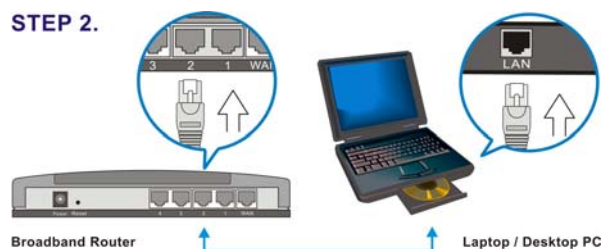
Instructions for using the router to share the Internet with multiple PCs. (Power on the Modem and the Router.)

#### Cabling installation:

1. Connect the Ethernet cable from the router's WAN port to the LAN port of the modem.



2. Connect another Ethernet cable from the any LAN ports (1~4) on router to the Ethernet socket on the PC.



3. Check to make sure the router's LINK LED is lit; to confirm the cable connections are made correctly.

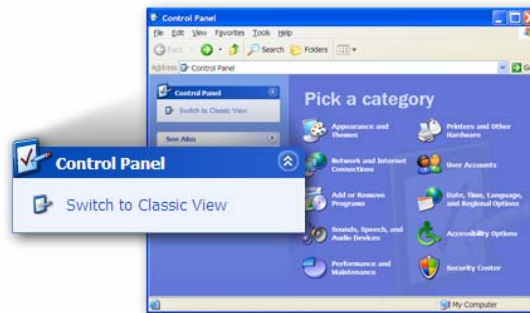
## Step2 : PC LAN IP Configuration

1. Configure the PC LAN setting to automatically obtain an IP address from the router by following below steps.

- Click **“Start”** in the task bar then select the **“Control Panel”** to open it.



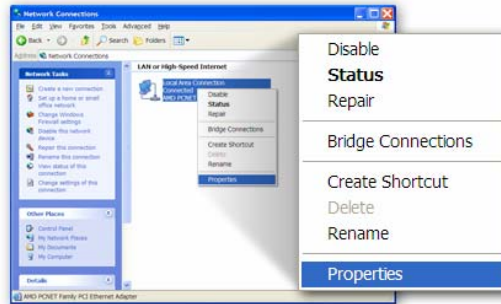
- Click **“Switch to Classic View”** on the left top to see more setting icon...



- Find an icon **“Network Connection”** then Double-Click to open the network connection setting.



- You will see an icon “**Local Area Connection**”, click the icon then Right-Click the mouse to open the sub-menu and select the “**Properties**” for setting the IP.

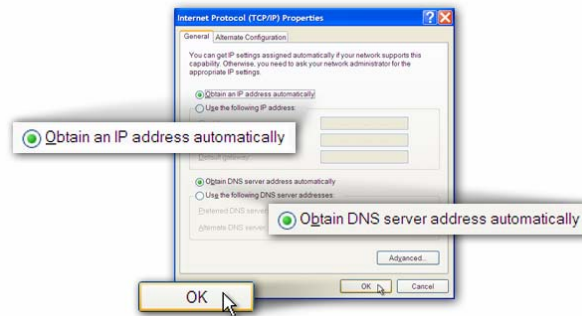




- Select the “**Internet Protocol (TCP/IP)**” then click the “**Properties**”



- Ensure the parameter marked in blue are checked in “**Obtain an IP address automatically**” and “**Obtain DNS server address automatically**” then press “**OK**” to close.

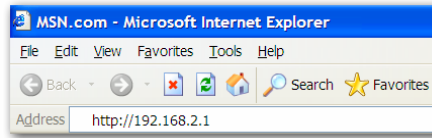


2. Power on sequence for the networking devices and PC.
  - Firstly, power off the modem followed by router and PC.
  - Second, power on the modem.
  - Third power on the router followed by PC for next step.

### Step 3 : Router Configuration – PPPoE

**Note: Please do not run the PPPoE software; otherwise the Internet connection for the router may fail.**

1. Enter the router's default IP address: “**192.168.2.1**” into your PC's web browser and press “**enter**”.



2. The login screen below will appear. Enter the “User Name” and “Password” and click “**OK**” to login.

The default User name is “**admin**” and the Password is “**1234**”,

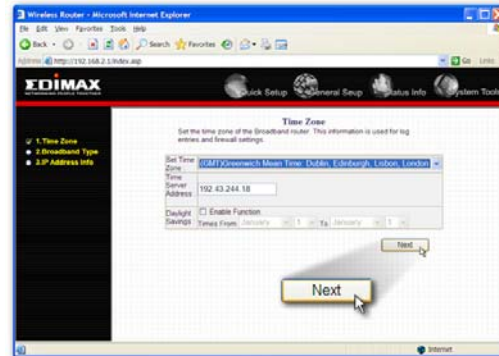


**Note: It's highly recommended to change and save Router's log-in settings in another location.**

3. The main page will appear, click **“Quick Setup”**  
Following example is for **“PPPoE”** WAN setting.



4. Select '(GMT) Greenwich Mean Time: (your country or city)' then Click **“Next”** button.



5. Select **“PPPoE xDSL”**, the system will move into next step



6. Enter the “**User Name**” and “**Password**” that ISP provided and leave the others. (The “**Service Name**” can be blank) and click “**OK**” to save the setting then reboot the router

7. After reboot, your router is now ready for Internet connection.

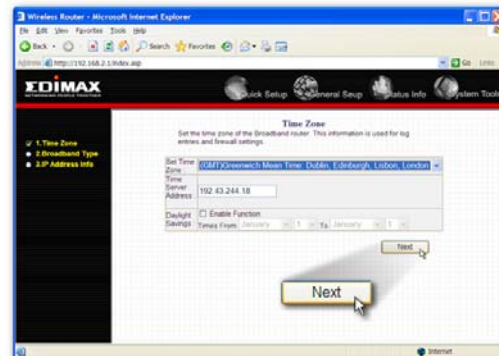
**Note:** Check the manual on the CD for more Internet connection type and other setting details

## Router Configuration - Cable Modem

1. The following example is for U.K. Click on **“Quick Setup”**.



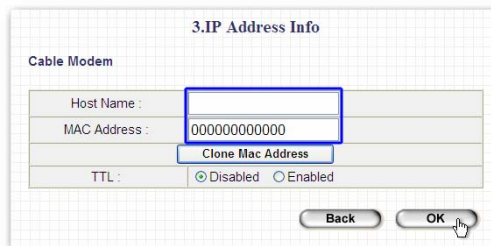
2. Select '(GMT) Greenwich Mean Time : London'. Click **“Next”** button.



3. Select **"Cable Modem"**, the system will move into next step



4. Enter **"Host Name"** and **"MAC Address"**. (The **"Host Name"** can be blank) The MAC Address is provided by ISP (e.g. NTL) or click **"Clone Mac Address"** button if you're using the computer's MAC Address.  
Confirm with your ISP about MAC Address used, Click **"OK"** button to save the settings then reboot the router.



5. After reboot, your router is now ready for Internet connection.

Antenna C

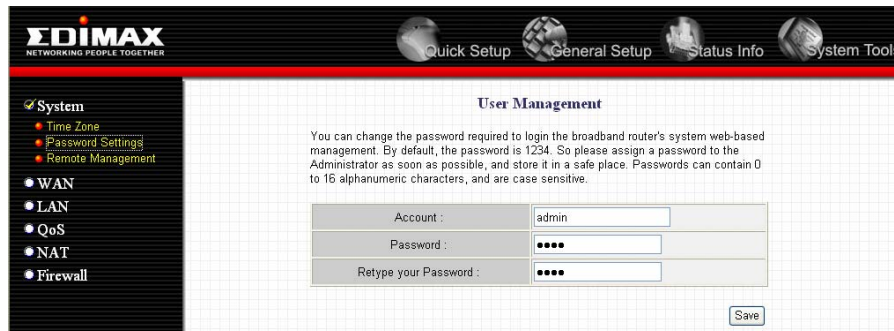
## 3 Advanced Setup

### 3-1 Change management password

Default password of this router is 1234, and it's displayed on the login prompt when accessed from web browser. There's a security risk if you don't change the default password, since everyone can see it.

To change password, please follow the following instructions:

Please click 'System' menu on the left of web management interface, then click 'Password Settings', and the following message will be displayed on your web browser:



The screenshot shows the EDIMAX web management interface. The top navigation bar includes 'Quick Setup', 'General Setup', 'Status Info', and 'System Tools'. The left sidebar menu has 'System' selected, with sub-items 'Time Zone', 'Password Settings', and 'Remote Management'. Below these are 'WAN', 'LAN', 'QoS', 'NAT', and 'Firewall'. The main content area is titled 'User Management' and contains a text block explaining the password change process. Below the text is a form with three input fields: 'Account' (containing 'admin'), 'Password' (masked with dots), and 'Retype your Password' (masked with dots). A 'Save' button is located at the bottom right of the form.

|                        |       |
|------------------------|-------|
| Account :              | admin |
| Password :             | ....  |
| Retype your Password : | ....  |

Save

Here are descriptions of every setup items:

|                        |                                       |
|------------------------|---------------------------------------|
| Account                | Please input current password here.   |
| Password :             | Please input new password here.       |
| Retype your Password : | Please input new password here again. |

When you finish, click 'Apply'; If you want to keep original password unchanged, click 'Cancel'.

### 3-2 Firmware Upgrade

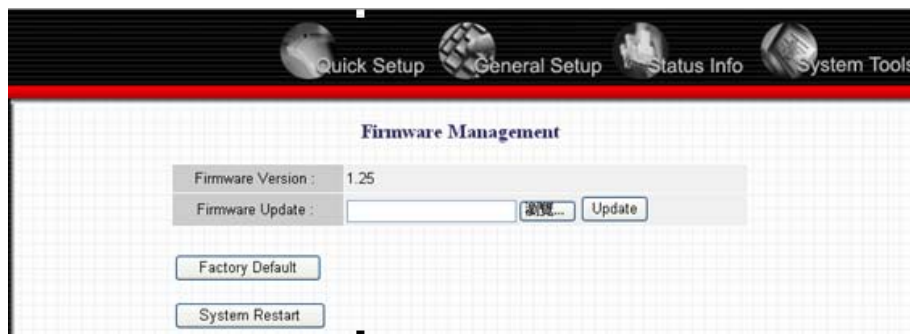
The system software used by this router is called as 'firmware', just like any applications on your computer, when you replace the old application with a new one, your computer will be equipped with new function. You can also use this firmware upgrade function to add new functions to your router, even fix the bugs of this router.

To upgrade firmware, please follow the following instructions:

Please click 'Tool' located at the upper-right corner of web management interface, then click 'Firmware Upgrade' on the left of web management interface, then the following message will be displayed on your web browser:



Please click 'Next', and the following message will be displayed:





Click 'Browse' button first, you'll be prompted to provide the filename of firmware upgrade file. Please download the latest firmware file from our website, and use it to upgrade your router.

After a firmware upgrade file is selected, click 'Apply' button, and the router will start firmware upgrade procedure automatically. The procedure may take several minutes, please be patient.

NOTE: Never interrupt the upgrade procedure by closing the web browser or physically disconnect your computer from router. If the firmware you uploaded is corrupt, the firmware upgrade will fail, and you may have to return this router to the dealer of purchase to ask for help. (Warranty voids if you interrupted the upgrade procedure).

### 3-3 System Reset

If you think the network performance is bad, or you found the behavior of the router is strange, you can perform a router reset, sometime it will solve the problem.

To do so, please click 'Tool' located at the upper-right corner of web management interface, then click 'Reset' on the left of web management interface, then the following message will be displayed on your web browser:



Please click 'Apply' to reset your router, and it will be available again after few minutes, please be patient.

### 3-4 Wireless Security (For Wireless Router Only)

***It's very important to set wireless security settings properly!*** If you don't, hackers and malicious users can reach your network and valuable data without your consent and this will cause serious security problem.

To set wireless security settings, Please click 'Wireless' menu on the left of web management interface, then click 'Security Settings', then follow the following instructions to set wireless security settings:

Please select an encryption method from 'Encryption' dropdown menu, there are four options. And we will inform you about WPA function.

When you select this mode, the wireless router will use WPA encryption, and the following setup menu will be shown on your web browser:

The screenshot shows the EDIMAX web management interface. The left sidebar contains a tree view with the following items: System, WAN, LAN, Wireless (selected), Basic Settings, Advanced Settings, Security Settings, Access Control, WPS, QoS, NAT, and Firewall. The main content area is titled 'Security Settings' and contains the following text: 'This page allows you setup the wireless security. Turn on WEP or WPA by using Encryption Keys could prevent any unauthorized access to your wireless network.' Below this text is a form with the following fields: 'Encryption' (dropdown menu set to 'WPA pre-shared key'), 'WPA Unicast Cipher Suite' (radio buttons for WPA(TKIP), WPA2(AES), and WPA2 Mixed), 'Pre-shared Key Format' (dropdown menu set to 'Passphrase'), and 'Pre-shared Key' (text input field). At the bottom right of the form are 'Apply' and 'Cancel' buttons.

Here are descriptions of every setup items :

|                            |   |
|----------------------------|---|
| WPA Unicast Cipher Suite : | Please select a type of WPA cipher suite.<br>Available options are: WPA (TKIP), WPA2 (AES), and WPA2 Mixed. You can select one of them, but you have to make sure your wireless client support the cipher you selected. |
| Pre-shared Key Format :    | Select the type of pre-shared key, you can select Passphrase (8 or more alphanumerical characters, up to 63), or Hex (64 characters of 0-9, and a-f).   |
| Pre-shared Key :           | Please input the WPA passphrase here.<br><b>It's not recommended to use a word that can be found in a dictionary due to security reason.</b>  |

After you finish WPA Pre-shared key setting, please click 'Apply' button and the following message will be displayed on your web browser:



Please click 'Continue' to back to previous setup menu; to continue on other setup procedures, or click 'Apply' to reboot the router so the settings will take effect (Please wait for about 50 seconds while router is rebooting).

**NOTE: Some wireless clients (especially those manufactured before year 2003) only support WEP or WPA (TKIP) cipher. A driver upgrade would be needed for those clients to use WPA and WPA2 encryption.**

**Note: Check the manual on the CD for more Internet connection type and other setting details**

## **Federal Communication Commission Interference Statement**

This equipment has been tested and found to comply with the limits for a Class B digital device, pursuant to Part 15 of FCC Rules. These limits are designed to provide reasonable protection against harmful interference in a residential installation. This equipment generates, uses, and can radiate radio frequency energy and, if not installed and used in accordance with the instructions, may cause harmful interference to radio communications.

However, there is no guarantee that interference will not occur in a particular installation. If this equipment does cause harmful interference to radio or television reception, which can be determined by turning the equipment off and on, the user is encouraged to try to correct the interference by one or more of the following measures:

1. Reorient or relocate the receiving antenna.
2. Increase the separation between the equipment and receiver.
3. Connect the equipment into an outlet on a circuit different from that to which the receiver is connected.
4. Consult the dealer or an experienced radio technician for help.

### **FCC Caution**

This device and its antenna must not be co-located or operating in conjunction with any other antenna or transmitter.

This device complies with Part 15 of the FCC Rules. Operation is subject to the following two conditions: (1) this device may not cause harmful interference, and (2) this device must accept any interference received, including interference that may cause undesired operation.

Any changes or modifications not expressly approved by the party responsible for compliance could void the authority to operate equipment.

### **Federal Communications Commission (FCC) Radiation Exposure Statement**

This equipment complies with FCC radiation exposure set forth for an uncontrolled environment. In order to avoid the possibility of exceeding the FCC radio frequency exposure limits, human proximity to the antenna shall not be less than 2.5cm (1 inch) during normal operation.

Federal Communications Commission (FCC) RF Exposure Requirements

SAR compliance has been established in the laptop computer(s) configurations with PCMCIA slot on the side near the center, as tested in the application for Certification, and can be used in laptop computer(s) with substantially similar physical dimensions, construction, and electrical and RF characteristics. Use in other devices such as PDAs or lappads is not authorized.

This transmitter is restricted for use with the specific antenna(s) tested in the application for Certification. The antenna(s) used for this transmitter must not be co-located or operating in conjunction with any other antenna or transmitter.

### **R&TTE Compliance Statement**

This equipment complies with all the requirements of DIRECTIVE 1999/5/EC OF THE EUROPEAN PARLIAMENT AND THE COUNCIL of March 9, 1999 on radio equipment and telecommunication terminal Equipment and the mutual recognition of their conformity (R&TTE)  
The R&TTE Directive repeals and replaces in the directive 98/13/EEC (Telecommunications Terminal Equipment and Satellite Earth Station Equipment) As of April 8, 2000.

### **Safety**

This equipment is designed with the utmost care for the safety of those who install and use it. However, special attention must be paid to the dangers of electric shock and static electricity when working with electrical equipment. All guidelines of this and of the computer manufacture must therefore be allowed at all times to ensure the safe use of the equipment.

**EU Countries Intended for Use**

The ETSI version of this device is intended for home and office use in Austria, Belgium, Denmark, Finland, France, Germany, Greece, Ireland, Italy, Luxembourg, the Netherlands, Portugal, Spain, Sweden, and the United Kingdom.

The ETSI version of this device is also authorized for use in EFTA member states: Iceland, Liechtenstein, Norway, and Switzerland.

**EU Countries not intended for use**

None

