



WL-303/WL-312

Wireless Broadband router

(802.11bgn draft 2.0)



User Manual

Revision:2.0

TABLE OF CONTENTS

1	KEY FEATURES.....	4
2	PACKAGE CONTENTS.....	5
3	PRODUCT LAYOUT	6
4	NETWORK + SYSTEM REQUIREMENTS	8
5	WL-303/WL-312 PLACEMENT	8
6	SETUP LAN, WAN	9
7	PC NETWORK ADAPTER SETUP (<i>WINDOWS XP</i>)	10
8	BRING UP WL-303/WL-312	12
9	INITIAL SETUP WL-303/WL-312	12
10	CONFIGURATION WIZARD.....	21
11	WIRELESS SETTINGS	23
12	FIREWALL SETTINGS	33
13	ADVANCED SETTINGS	39
14	TOOLBOX SETTINGS	49

Introduction

Congratulations on your purchase of WL-303/WL-312 Wireless Network Broadband Router. WL-303/WL-312 is compliant with draft 802.11n v 2.0 up to 6 times faster than standard 802.11g based routers while still being compatible with 802.11g & 802.11b gadgets. WL-303/WL-312 is not only a Wireless Access Point, but also doubles as a 4-port full-duplex Switch that connects your wired-Ethernet devices together at.

At 300 Mbps wireless transmission rate, the Access Point built into the Router uses advanced MIMO (Multi-Input, Multi-Output) technology to transmit multiple streams of data in a single wireless channel, giving you seamless access to multimedia content. Robust RF signal travels farther, eliminates dead spots and extends network range. For data protection and privacy, WL-303/WL-312 encodes all wireless transmissions with WEP, WPA, and WPA2 encryption.

With inbuilt DHCP Server & powerful SPI firewall WL-303/WL-312 protects your computers against intruders and most known Internet attacks but provides safe VPN pass-through. With incredible speed and QoS function of 802.11n(draft2.0), WL-303/WL-312 is ideal for media-centric applications like streaming video, gaming, and VoIP telephony to run multiple media-intense data streams through the network at the same time, with no degradation in performance.

1 Key Features

Features	Advantages
Incredible Data Rate up to 300Mbps**	Heavy data payloads such as MPEG video streaming
IEEE 802.11n draft 2.0 Compliant and backward compatible with 802.11b/g	Fully Interoperable with IEEE 802.11b / IEEE802.11g compliant devices with legacy protection
Four 10/100 Mbps Fast Switch Ports (Auto-Crossover)	Scalability, extend your network.
Firewall supports Virtual Server Mapping, DMZ, IP Filter, ICMP Blocking, SPI	Avoids the attacks of Hackers or Viruses from Internet
Support 802.1x authenticator, 802.11i (WPA/WPA2, AES), VPN pass-through	Provide mutual authentication (Client and dynamic encryption keys to enhance security
WDS (Wireless Distribution System)	Make wireless AP and Bridge mode simultaneously as a wireless repeater

*** Theoretical wireless signal rate based on IEEE standard of 802.11a, b, g, n chipset used. Actual throughput may vary. Network conditions and environmental factors lower actual throughput rate. All specifications are subject to change without notice.*

2 Package Contents

Open the package carefully, and make sure that none of the items listed below are missing. Do not discard the packing materials, in case of return; the unit must be shipped back in its original package.

1. WL-303/312 Router
2. 220V~240V Power Adapter
3. 2dBi 2.4GHz Dipole Antennas x (wl-303 3 pcs, wl-312 2pcs)
4. Quick Install Guide
5. CD (User's Manual)
6. Warranty card
7. UTP cable

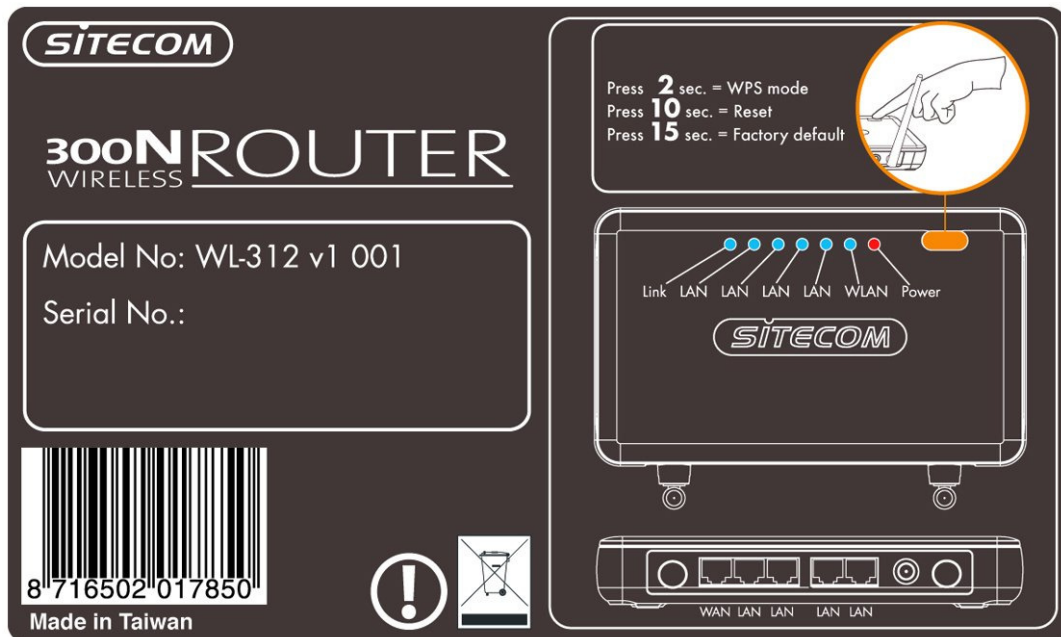
3 Product Layout



Port	Description
WAN	Connect the cable from you ADSL/Cable modem to this port
LAN	Connect the cable from your PC's or network devices to this port
Power connector	Blinks on traffic for specific LAN PORT

Backlabel

The backlabel describes the corresponding LED indications and port functionality



LED	Description
POWER	Lights up when powered ON. Blinks on TEST/RESET
WLAN	Lights up in Blue when WLAN is enabled. Blinks on traffic
LINK/ACTIVY	Blinks on traffic for specific LAN PORT
WPS BUTTON	<p>Press 2 seconds for WPS mode</p> <p>Press 10 seconds to reset the router</p> <p>Press 15 Seconds to reset the router to factory defaults.</p>

4 Network + System Requirements

To begin using the WL-303/WL-312, make sure you meet the following as minimum requirements:

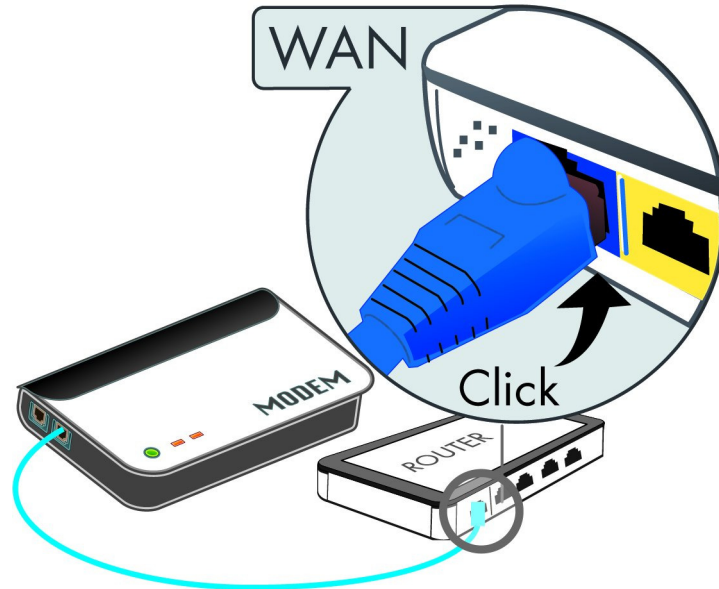
- PC/Notebook.
- Operating System – Microsoft Windows XP/2000/VISTA
- 1 Free Ethernet port.
- WiFi card/USB dongle (802.11 b/g/n) – optional.
- External xDSL (ADSL) or Cable modem with an Ethernet port (RJ-45).
- PC with a Web-Browser (Internet Explorer, Safari, Firefox, Opera)
- Ethernet compatible CAT5 cables.

5 WL-303/WL-312 Placement

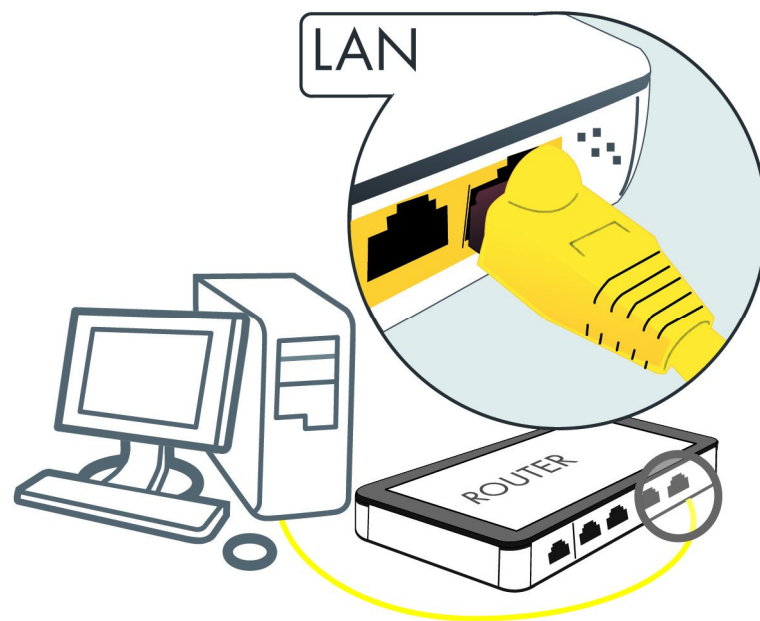
You can place WL-303/WL-312 on a desk or other flat surface, or you can mount it on a wall. For optimal performance, place your Wireless Broadband Router in the center of your office (or your home) in a location that is away from any potential source of interference, such as a metal wall or microwave oven. This location must be close to a power connection and your ADSL/Cable modem.

6 Setup LAN, WAN

WAN connection:

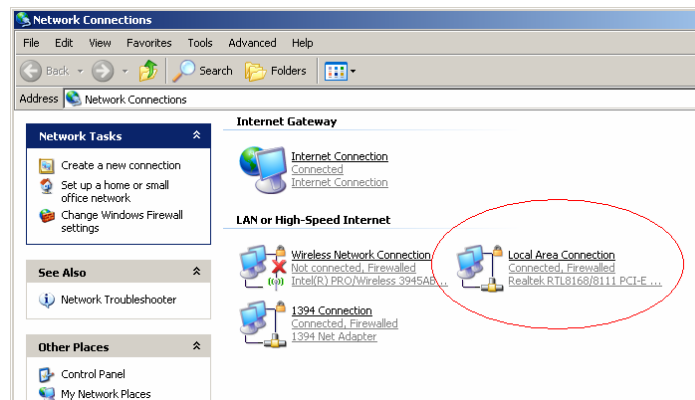


LAN connection:

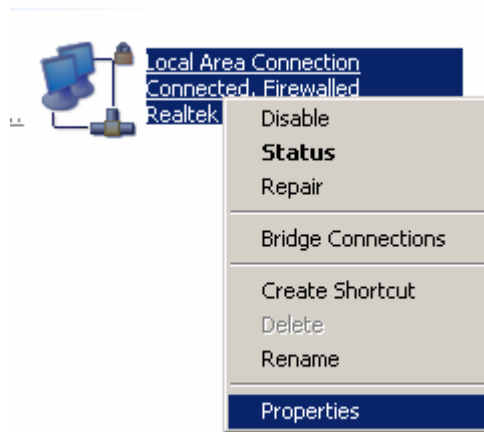


7 PC Network Adapter setup (*Windows XP*)

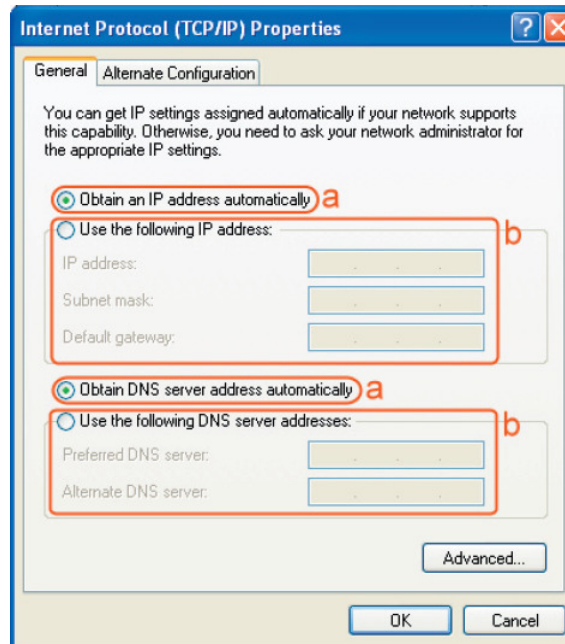
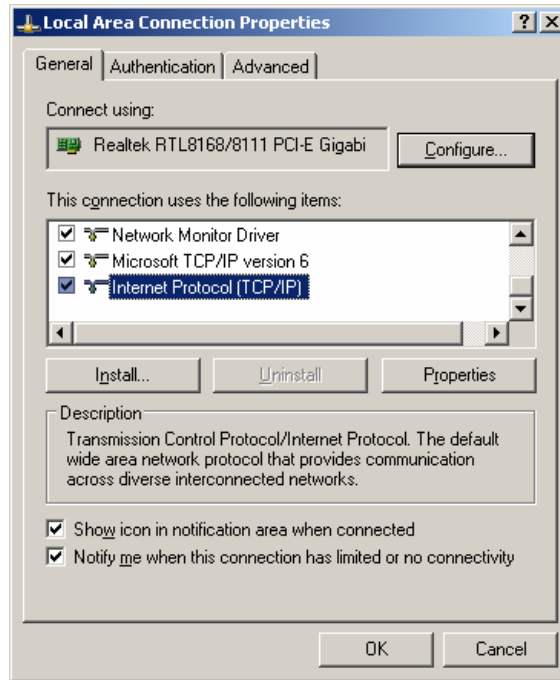
- Enter [Start Menu] → select [Control panel] → select [Network].



- Select [Local Area Connection]) icon=>select [properties]



- Select [Internet Protocol (TCP/IP)] =>Click [Properties].



- Select the [General] tab.
 - a. WL-303/WL-312 supports [DHCP] function, please select both [Obtain an IP address automatically] and [Obtain DNS server address automatically].

8 Bring up WL-303/WL-312

Connect the supplied power-adaptor to the power inlet port and connect it to a wall outlet. The WL-303/WL-312 automatically enters the self-test phase. During self-test phase, the Power LED will blink briefly, and then will be lit continuously to indicate that this product is in normal operation.

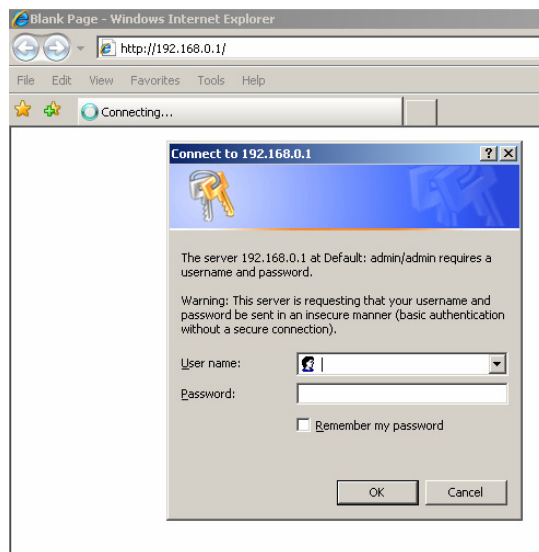
9 Initial Setup WL-303/WL-312

LOGIN procedure

2. Click OPEN your browser (e.g. Internet Explorer).



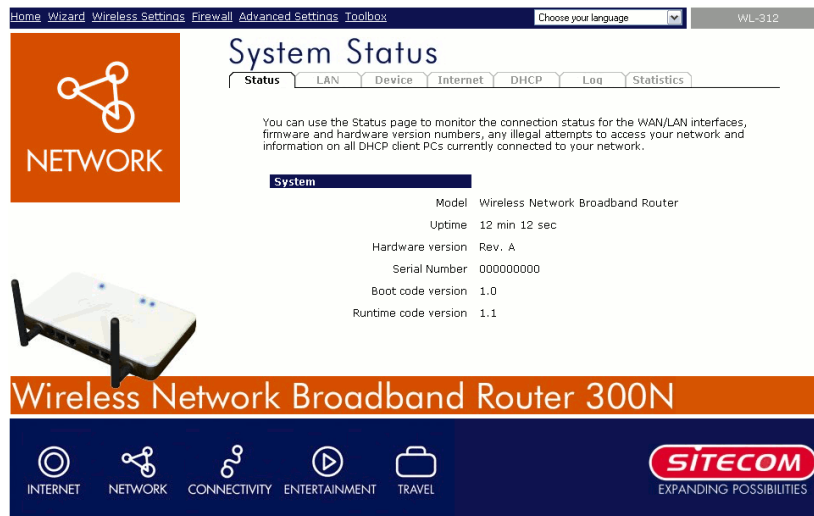
3. Type **http://192.168.0.1** in address bar and press [Enter]



4. Type user name and password (default is admin/admin).



5. Click **OK**.
6. You will see the home page of the WL-303/WL-312.

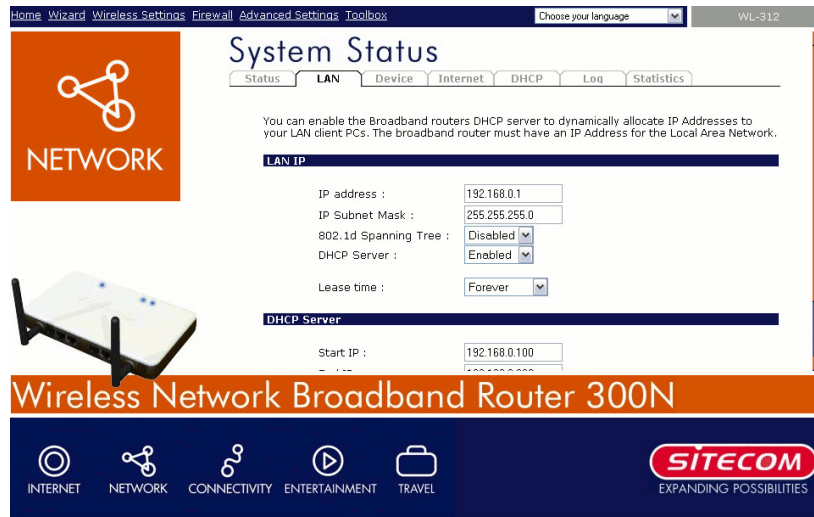


The System status section allows you to monitor the current status of your router the UP time, hardware information, serial number as well as firmware version information is displayed here.

LAN settings

The LAN tabs gives you the opportunity to change the IP settings of the WL-303/312.

Click **<Apply>** at the bottom of this screen to save any changes.



IP address 192.168.0.1. It is the router's LAN IP address (Your LAN clients default gateway IP address).

IP Subnet Mask 255.255.255.0 Specify a Subnet Mask for your LAN segment.

802.1d Spanning Tree is Disabled by default. If the 802.1d Spanning Tree function is enabled, this router will use the spanning tree protocol to prevent network loops.

DHCP Server Enabled by default. You can enable or disable the DHCP server. When DHCP is disabled no ip-addresses are assigned to clients and you have to use static ip-addresses. When DHCP server is enabled your computers will be assigned an ip-address automatically until the lease time expires.

Lease Time Forever. In the Lease Time setting you can specify the time period that the DHCP lends an IP address to your LAN clients. The DHCP will change your LAN client's IP address when this time threshold period is reached.

IP Address Pool You can select a particular IP address range for your DHCP server to issue IP addresses to your LAN Clients.

***Note:** default IP range 192.168.0.100 ↔ 192.168.0.199. If you want your PC(s) to have a static/fixed IP address, then you'll have to choose an IP address outside this IP address Pool*

Domain Name You can specify a Domain Name for your LAN. Or just keep the default (sitecom_router).

Device Status

View the Broadband router's current configuration settings. Device Status displays the configuration settings you've configured in the Wizard / Basic Settings / Wireless Settings section

Home Wizard Wireless Settings Firewall Advanced Settings Toolbox Choose your language WL-312

System Status

Status LAN **Device** Internet DHCP Log Statistics

View the current setting status of this device.

Wireless Configuration	
Mode	AP
ESSID	SitecomCCDD10
Channel	7
Security	Disable
Associated Clients	0
BSSID	00-AA-BB-CC-DD:10

LAN Configuration	
IP address	192.168.0.1
Subnet Mask	255.255.255.0
DHCP Server	Enabled
MAC address	00-AA-BB-CC-DD:10

Wireless Network Broadband Router 300N

INTERNET NETWORK CONNECTIVITY ENTERTAINMENT TRAVEL

SITECOM
EXPANDING POSSIBILITIES

Internet Status

This page displays whether the WAN port is connected to a Cable/DSL connection. It also displays the router's WAN IP address, Subnet Mask, and ISP Gateway as well as MAC address, the Primary DNS. Press **Renew** button to renew your WAN IP address.

Home Wizard Wireless Settings Firewall Advanced Settings Toolbox Choose your language WL-312

System Status

Status LAN Device **Internet** DHCP Log Statistics

View the current internet connection status and related information.

Attain IP Protocol :	Dynamic IP Address
IP address :	---
Subnet Mask :	---
Default Gateway :	---
MAC address :	00:AA:BB:CC:DD:11
Primary DNS :	---

Wireless Network Broadband Router 300N

INTERNET NETWORK CONNECTIVITY ENTERTAINMENT TRAVEL

SITECOM
EXPANDING POSSIBILITIES

DHCP Client Status

DHCP This page shows all DHCP clients (LAN PCs) currently connected to your network. The table shows the assigned IP address, MAC address and expiration time for each DHCP leased client. Use the Refresh button to update the available information.

You can check **Enable Static DHCP IP**. It is possible to add more static DHCP IPs. They are listed in the table **Current Static DHCP Table**. IP can be deleted at will from the table.

Click **apply** button to save the changed configuration.

Home Wizard Wireless Settings Firewall Advanced Settings Toolbox Choose your language WL-312

NETWORK

This table shows the assigned IP address, MAC address and expiration time for each DHCP leased client.

IP address	MAC address	Expiration Time
192.168.0.100	00:1C:23:A5:B8:4C	Forever

Refresh

Enable Static DHCP IP

IP address	MAC address
<input type="text"/>	<input type="text"/>

Add Reset

Current Static DHCP Table:

NO.	IP address	MAC address	Select
-----	------------	-------------	--------

Delete Selected Delete All Reset

Apply Cancel

Wireless Network Broadband Router 300N

INTERNET NETWORK CONNECTIVITY ENTERTAINMENT TRAVEL

SITECOM
EXPANDING POSSIBILITIES

WL-303/WL-312 Log

View the operation **log of WL-303/WL-312**. This page shows the current system log of the Broadband router. It displays any event occurred after system start up. At the bottom of the page, the system log can be saved **<Save>** to a local file for further processing or the system log can be cleared **<Clear>** or it can be refreshed **<Refresh>** to get the most updated information. When the system is powered down, the system log will disappear if not saved to a local file.

Home Wizard Wireless Settings Firewall Advanced Settings Toolbox Choose your language WL-312

System Status

Status LAN Device Internet DHCP **Log** Statistics

View the system operation information. You can see the system start up time, connection process...etc. here.

```
day 1 00:00:14 [SYSTEM]: DHCP Server, Sending ACK of 192.168.0.100
day 1 00:00:14 [SYSTEM]: DHCP Server, Sending OFFER of 192.168.0.100
day 1 00:00:06 [SYSTEM]: HTTP, Starting
day 1 00:00:06 [SYSTEM]: DDNS, Disabled
day 1 00:00:04 [SYSTEM]: NET, Firewall Starting
day 1 00:00:04 [SYSTEM]: NET, NAT Starting
day 1 00:00:04 [SYSTEM]: NTP, NTP Client Starting
day 1 00:00:04 [SYSTEM]: DNS, DNS Proxy Starting
day 1 00:00:04 [SYSTEM]: DHCP, DHCP Server Starting
```

Save Clear Refresh

Wireless Network Broadband Router 300N

INTERNET NETWORK CONNECTIVITY ENTERTAINMENT TRAVEL

SITECOM
EXPANDING POSSIBILITIES

WL-303/WL-312 Statistics

Shows the counters of packets sent and received on WAN, LAN & WLAN.

Home Wizard Wireless Settings Firewall Advanced Settings Toolbox Choose your language WL-312

System Status

Status LAN Device Internet DHCP Log **Statistics**

This page shows the packet counters for transmission and reception regarding to networks.

Wireless LAN	Sent Packets	0
	Received Packets	0
Ethernet LAN	Sent Packets	215
	Received Packets	238
Ethernet WAN	Sent Packets	0
	Received Packets	0

Refresh

Wireless Network Broadband Router 300N

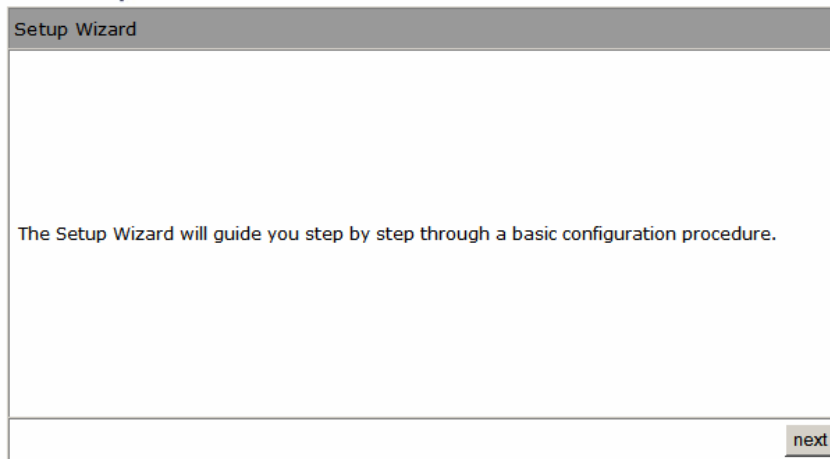
INTERNET NETWORK CONNECTIVITY ENTERTAINMENT TRAVEL

SITECOM
EXPANDING POSSIBILITIES

10 Configuration Wizard

Click **Wizard** to configure the router. The Setup wizard will now be displayed; check that the modem is connected and click **Next**.

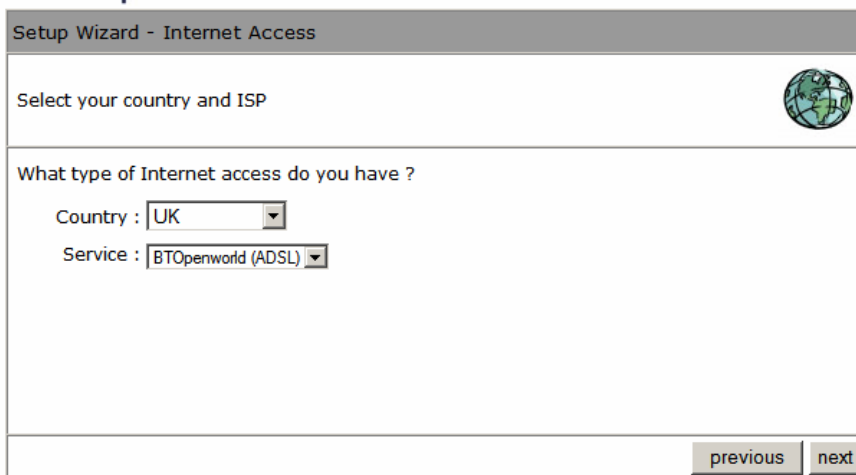
Setup wizard



The screenshot shows a window titled "Setup Wizard". The main content area contains the text: "The Setup Wizard will guide you step by step through a basic configuration procedure." In the bottom right corner, there is a button labeled "next".

Select your country from the Country list. Select your internet provider. Click **Next**.

Setup wizard



The screenshot shows a window titled "Setup Wizard - Internet Access". The main content area contains the text: "Select your country and ISP" with a globe icon to the right. Below this, it asks "What type of Internet access do you have ?". There are two dropdown menus: "Country : UK" and "Service : BTOpenworld (ADSL)". In the bottom right corner, there are two buttons labeled "previous" and "next".

Depending on the chosen provider, you may need to enter your user name and password, MAC address or hostname in the following window. After you have entered the correct information, click **Next**.

Setup Wizard

Enter the data supplied by your ISP.

Host Name :

MAC Address :

< Back Apply Cancel

Setup Wizard

Enter the data supplied by your ISP.

Login method: PPP over Ethernet

User Name :

Password :

Service Name :

MTU : (512<=MTU Value<=1492)

Connection Type :

Idle Time : (1-1000 minutes)

< Back Apply Cancel

Click **APPLY** to complete the configuration.

11 Wireless Settings

You can set parameters that are used for the wireless stations to connect to this router. The parameters include Mode, ESSID, Channel Number and Associated Client.

Wireless Function

Wireless

Enable Basic Advanced Security ACL WPS

The gateway can be quickly configured as a wireless access point for roaming clients by setting the SSID and channel number. It also supports data encryption and client filtering.

Enable or disable Wireless module function : Enable Disable

Apply

Enable or Disable Wireless function here. Click **Apply** and wait for module to be ready & loaded.

Basic Settings

Wireless

This page allows you to define ESSID, and Channel for the wireless connection. These parameters are used for the wireless stations to connect to the Access Point.

Mode :

Band :

ESSID :

Channel :

Mode Allows you to set the AP to AP, Station, Bridge or WDS mode.

Band Allows you to set the AP fixed at 802.11b or 802.11g mode. You can also select B+G mode to allow 802.11b and 802.11g clients at the same time.

ESSID This is the name of the wireless signal which is broadcasted. All the devices in the same wireless LAN should have the same ESSID.

Channel Number The channel used by the wireless LAN. All devices in the same wireless LAN should use the same channel.

WLAN MAC This is the MAC address used by the Wireless interface of this AP when it is in the station mode.

Clone MAC Click the "Clone MAC" button will copy the MAC address of your PC,

that you are using to configure the AP, to the WLAN MAC.

MAC address If you want to bridge several networks together through the wireless connection, you have to set this access point to "AP Bridge-Point to Point mode", "AP Bridge-Point to Multi-Point mode" or "AP Bridge-WDS mode". You have to enter the MAC addresses of the other access points

Advanced Settings

This tab allows you to set the advanced wireless options. The options included are Authentication Type, Fragment Threshold, RTS Threshold, Beacon Interval, and Preamble Type. You should not change these parameters unless you know what effect the changes will have on the router.

Wireless



These settings are only for more technically advanced users who have a sufficient knowledge about wireless LAN. These settings should not be changed unless you know what effect the changes will have on your Broadband router.

Authentication type :	<input checked="" type="radio"/> Open System	<input type="radio"/> Shared Key	<input type="radio"/> Auto
Fragment Threshold :	<input type="text" value="2346"/>	(256-2346)	
RTS Threshold :	<input type="text" value="2347"/>	(0-2347)	
Beacon Interval :	<input type="text" value="100"/>	(20-1024 ms)	
DTIM Period :	<input type="text" value="1"/>	(1-10)	
Data rate :	<input type="text" value="Auto"/>		
N Data rate:	<input type="text" value="Auto"/>		
Channel Bandwidth	<input checked="" type="radio"/> Auto 20/40 MHZ	<input type="radio"/> 20 MHZ	
Preamble Type :	<input type="radio"/> Long Preamble	<input checked="" type="radio"/> Short Preamble	
Broadcast ESSID :	<input checked="" type="radio"/> Enable	<input type="radio"/> Disable	
CTS Protection :	<input type="radio"/> Auto	<input type="radio"/> Always	<input checked="" type="radio"/> None
Tx Power :	<input type="text" value="100 %"/>		
WMM :	<input checked="" type="radio"/> Enable	<input type="radio"/> Disable	



Authentication Type There are two authentication types: "Open System" and "Shared Key". When you select "Open System", wireless stations can associate with this wireless router without WEP encryption. When you select "Shared Key", you should also setup a WEP key in the "Encryption" page. After this has been done, make sure the wireless clients that you want to connect to the device are also setup with the same encryption key.

Fragment Threshold "Fragment Threshold" specifies the maximum size of a packet during the fragmentation of data to be transmitted. If you set this value too low, it will result in bad performance.

RTS Threshold When the packet size is smaller than the RTS threshold, the wireless router will not use the RTS/CTS mechanism to send this packet.

Beacon Interval is the interval of time that this wireless router broadcasts a beacon. A Beacon is used to synchronize the wireless network.

Data Rate The "Data Rate" is the rate that this access point uses to transmit data packets. The access point will use the highest possible selected transmission rate to transmit the data packets.

N Data Rate The "Data Rate" is the rate that this access point uses to transmit data packets for N compliant wireless nodes. Highest to lowest data rate can be fixed.

Channel Bandwidth is the range of frequencies that will be used.

Preamble Type The "Long Preamble" can provide better wireless LAN compatibility while the "Short Preamble" can provide better wireless LAN performance.

Broadcast ESSID If you enabled "Broadcast ESSID", every wireless station located within the coverage of this access point can discover this access point easily. If you are building a public wireless network, enabling this feature is recommended. Disabling "Broadcast ESSID" can provide better security.

CTS Protection: It is recommended to enable the protection mechanism. This mechanism can decrease the rate of data collision between 802.11b and 802.11g wireless stations. When the protection mode is enabled, the throughput of the AP will be a little lower due to a lot of frame-network that is transmitted.

TX Power can be set to a bare minimum or maximum power.

WMM WiFi Multi Media if enabled supports QoS for experiencing better audio, video and voice in applications.

Security

This Access Point provides complete wireless LAN security functions, included are WEP, IEEE 802.11x, IEEE 802.11x with WEP, WPA with pre-shared key and WPA with RADIUS. With these security functions, you can prevent your wireless LAN from illegal access. Please make sure your wireless stations use the same security function, and are setup with the same security key.

Disable

When you choose to disable encryption, it is very insecure to operate WL-303/WL-312.

Wireless

Enable Basic Advanced **Security** ACL WPS

This page allows you setup the wireless security. Turn on WEP or WPA by using Encryption Keys could prevent any unauthorized access to your wireless network.

Encryption : Disable

Enable 802.1x Authentication

Apply Cancel

Enable 802.1x Auth

IEEE 802.1x is an authentication protocol. Every user must use a valid account to login to this Access Point before accessing the wireless LAN. The authentication is processed by a RADIUS server. This mode only authenticates users by IEEE 802.1x, but it does not encrypt the data during communication

Encryption : Disable

Enable 802.1x Authentication

RADIUS Server IP address : 192.168.1.1

RADIUS Server port : 1812

RADIUS Server password :

Apply Cancel

WEP

When you select 64-bit or 128-bit WEP key, you have to enter WEP keys to encrypt data. You can generate the key by yourself and enter it. You can enter four WEP keys and select one of them as a default key. Then the router can receive any packets encrypted by one of the four keys.

Encryption :	WEP
Key Length :	128-bit
Key type :	ASCII (13 characters)
Default key :	Key 1
Encryption Key 1 :	*****
Encryption Key 2 :	*****
Encryption Key 3 :	*****
Encryption Key 4 :	*****
<input checked="" type="checkbox"/> Enable 802.1x Authentication	
RADIUS Server IP address :	192.168.1.1
RADIUS Server port :	1812
RADIUS Server password :	●●●●●●●●

Key Length You can select the WEP key length for encryption, 64-bit or 128-bit. The larger the key will be the higher level of security is used, but the throughput will be lower.

Key Format You may select ASCII Characters (alphanumeric format) or Hexadecimal Digits (in the "A-F", "a-f" and "0-9" range) to be the WEP Key.

Key1 - Key4 The WEP keys are used to encrypt data transmitted in the wireless network. Use the following rules to setup a WEP key on the device. 64-bit WEP: input 10-digits Hex values (in the "A-F", "a-f" and "0-9" range) or 5-digit ASCII character as the encryption keys. 128-bit WEP: input 26-digit Hex values (in the "A-F", "a-f" and "0-9" range) or 13-digit ASCII characters as the encryption keys.

Click <Apply> at the bottom of the screen to save the above configurations. You can now configure other sections by choosing Continue, or choose Apply to apply the settings and reboot the device.

WPA Pre-shared Key

Wi-Fi Protected Access (WPA) is an advanced security standard. You can use a pre-shared key to authenticate wireless stations and encrypt data during communication. It uses TKIP or CCMP (AES) to change the encryption key frequently. So the encryption key is not easy to be cracked by hackers. This is the best security available.

Encryption :	WPA pre-shared key
WPA type :	<input checked="" type="radio"/> WPA(TKIP) <input type="radio"/> WPA2(AES) <input type="radio"/> WPA2 Mixed
Pre-shared Key type :	Passphrase
Pre-shared Key :	passphrase

WPA-Radius

Wi-Fi Protected Access (**WPA**) is an advanced security standard. You can use an external RADIUS server to authenticate wireless stations and provide the session key to encrypt data during communication. It uses **TKIP** or CCMP (**AES**) to change the encryption key frequently. Press **Apply** button when you are done.

Encryption :	WPA RADIUS
WPA type :	<input checked="" type="radio"/> WPA(TKIP) <input type="radio"/> WPA2(AES) <input type="radio"/> WPA2 Mixed
RADIUS Server IP address :	192.168.1.1
RADIUS Server port :	1812
RADIUS Server password :	••••••••

ACL

This wireless router supports MAC Address Control, which prevents unauthorized clients from accessing your wireless network.

Wireless



For security reason, the Access Point features MAC Address Filtering which only allows authorized MAC Addresses to associate with the Access Point.

MAC Address Filtering Table

NO.	MAC address	Comment	Select
1	00:11:22:33:44:55	NetPC	<input type="checkbox"/>

Delete Selected Delete All Reset

Enable Wireless Access Control

New	MAC address:	Comment:	Add
	<input type="text"/>	<input type="text"/>	Reset

Enable wireless access control Enables the wireless access control function

Adding an address into the list Enter the "MAC Address" and "Comment" of the wireless station to be added and then click "Add". The wireless station will now be added into the "Current Access Control List" below. If you are having any difficulties filling in the fields, just click "Clear" and both "MAC Address" and "Comment" fields will be cleared.

Remove an address from the list If you want to remove a MAC address from the "Current Access Control List", select the MAC address that you want to remove in the list and then click "Delete Selected". If you want to remove all the MAC addresses from the list, just click the "Delete All" button. Click "Reset" will clear your current selections.

Click <Apply> at the bottom of the screen to save the above configurations. You can now configure other sections by choosing Continue, or choose Apply to apply the settings and reboot the device.

WPS

Wi-Fi Protected Setup (WPS) is the simplest way to establish a connection between the wireless clients and the wireless router. You don't have to select the encryption mode and fill in a long encryption passphrase every time when you try to setup a wireless connection. You only need to press a button on both wireless client and wireless router, and WPS will do the rest for you.

The wireless router supports two types of WPS: WPS via Push Button and WPS via PIN code. If you want to use the Push Button, you have to push a specific button on the wireless client or in the utility of the wireless client to start the WPS mode, and switch the wireless router to WPS mode. You can simply push the WPS button of the wireless router, or click the 'Start to Process' button in the web configuration interface. If you want to use the PIN code, you have to know the PIN code of the wireless client and switch it to WPS mode, then fill-in the PIN code of the wireless client through the web configuration interface of the wireless router.

Wireless

Enable Basic Advanced Security ACL **WPS**

WPS: Enable

Wi-Fi Protected Setup Information

WPS Current Status: unConfigured

Self Pin Code: 34259368

SSID: SitecomCCDD10

Authentication Mode: Disable

Passphrase Key:

WPS Via Push Button :

WPS via PIN :

WPS Check the box to enable WPS function and uncheck it to disable the WPS function.

WPS Current Status If the wireless security (encryption) function of this wireless router is properly set, you'll see a 'Configured' message here. Otherwise, you'll see 'UnConfigured'.

Self Pin Code This is the WPS PIN code of the wireless router. You may need this information when connecting to other WPS-enabled wireless devices.

SSID This is the network broadcast name (SSID) of the router.

Authentication Mode It shows the active authentication mode for the wireless connection.

Passphrase Key It shows the passphrase key that is randomly generated by the wireless router during the WPS process. You may need this information when using a device which doesn't support WPS.

WPS via Push Button Press the button to start the WPS process. The router will wait for the WPS request from the wireless devices within 2 minutes.

WPS via PIN You can fill-in the PIN code of the wireless device and press the button to start the WPS process. The router will wait for the WPS request from the wireless device within 2 minutes.

12 Firewall Settings

The Broadband router provides extensive firewall protection by restricting connection parameters, thus limiting the risk of hacker attacks, and defending against a wide array of common Internet attacks. However, for applications that require unrestricted access to the Internet, you can configure a specific client/server as a Demilitarized Zone (DMZ).

Note: To enable the Firewall settings select Enable and click Apply

DMZ

If you have a client PC that cannot run an Internet application (e.g. Games) properly from behind the NAT firewall, then you can open up the firewall restrictions to unrestricted two-way Internet access by defining a DMZ Host. The DMZ function allows you to re-direct all packets going to your WAN port IP address to a particular IP address in your LAN. The difference between the virtual server and the DMZ function is that the virtual server re-directs a particular service/Internet application (e.g. FTP, websites) to a particular LAN client/server, whereas DMZ re-directs all packets (regardless of services) going to your WAN

IP address to a particular LAN client/server.

Enable **DMZ** **DoS** **Access** **URL block**

If you have a local client PC that cannot run an Internet application properly from behind the NAT firewall, you can open unrestricted two-way Internet access for this client by defining a Virtual DMZ Host.

Enable DMZ

Public IP Address	Client PC IP Address
<input checked="" type="radio"/> Dynamic IP Session 1 <input type="text"/>	<input type="text"/>
<input type="radio"/> Static IP <input type="text"/>	<input type="text"/>

DMZ table:

NO.	Public IP Address	Client PC IP Address	Select
-----	-------------------	----------------------	--------

Enable DMZ Enable/disable DMZ

Public IP Address The IP address of the WAN port or any other Public IP addresses given to you by your ISP

Client PC IP Address Fill-in the IP address of a particular host in your LAN that will receive all the packets originally going to the WAN port/Public IP address above.

Click **<Apply>** at the bottom of the screen to save the above configurations.

Denial of Service (DoS)

The Broadband router's firewall can block common hacker attacks, including Denial of Service, Ping of Death, Port Scan and Sync Flood. If Internet attacks occur the router can log the events.



The firewall can block common hacker attacks, including DoS, Discard Ping from WAN and Port Scan.

Denial of Service features

Ping of Death :	<input checked="" type="checkbox"/>
Discard Ping on WAN :	<input checked="" type="checkbox"/>
Port scan :	<input checked="" type="checkbox"/>
Sync Flood :	<input checked="" type="checkbox"/>

Advanced Settings

Apply Cancel

Ping of Death Protections from Ping of Death attack

Discard Ping From WAN The router's WAN port will not respond to any Ping requests

Port Scan Protects the router from Port Scans.

Sync Flood Protects the router from Sync Flood attack.

Access

You can restrict users from accessing certain Internet applications/services (e.g. Internet websites, email, FTP etc.), Access Control allows users to define the traffic type permitted in your LAN. You can control which PC client can have access to these services.

Enable MAC filtering Deny Allow

Client PC MAC Address	Comment
<input type="text"/>	<input type="text"/>

MAC Filtering table:

NO.	Client PC MAC Address	Comment	Select
-----	-----------------------	---------	--------

Enable IP Filtering Table (up to 20 computers) Deny Allow

NO.	PC Description	PC IP Address	Client Service	Protocol	Port range	Select
-----	----------------	---------------	----------------	----------	------------	--------

Deny If you select "Deny" then all clients will be allowed to access Internet accept for the clients in the list below.

Allow If you select "Allow" then all clients will be denied to access Internet accept for the PCs in the list below.

Filter client PCs by IP Fill in "IP Filtering Table" to filter PC clients by IP.

Add PC You can click Add PC to add an access control rule for users by IP addresses.

Remove PC If you want to remove some PCs from the "IP Filtering Table", select the PC you want to remove in the table and then click "Delete Selected". If you want to remove all PCs from the table, just click the "Delete All" button.

Filter client PC by MAC Check "Enable MAC Filtering" to enable MAC Filtering.

Add PC Fill in "Client PC MAC Address" and "Comment" of the PC that is allowed to access the Internet, and then click "Add". If you find any typo before adding it and want to retype again, just click "Reset" and the fields will be cleared.

Remove PC If you want to remove some PC from the "MAC Filtering Table", select the PC you want to remove in the table and then click "Delete Selected". If you want to remove all PCs from the table, just click the "Delete All" button. If you want to clear the selection and re-select again, just click "Reset".

Click <**Apply**> at the bottom of the screen to save the above configuration.

URL block

You can block access to some Web sites from particular PCs by entering a full URL address or just keywords of the Web site.

Security

Enable DMZ DoS Access **URL block**

You can block access to certain Web sites for a particular PC by entering either a URL address or just a keyword of the Web site

Enable URL Blocking

URL/keyword

Current URL Blocking Table:

NO.	URL/keyword	Select
1	www.youtube.com	<input checked="" type="checkbox"/>

Enable URL Blocking Enable/disable URL Blocking

Add URL Keyword Fill in "URL/Keyword" and then click "Add". You can enter the full URL address or the keyword of the web site you want to block.

Remove URL Keyword If you want to remove some URL keywords from the "Current URL Blocking Table", select the URL keyword you want to remove in the table and then click "Delete Selected". If you want remove all URL keywords from the table, just click "Delete All" button. If you want to clear the selection and re-select again, just click "Reset".

Click **<Apply>** at the bottom of the screen to save the above configurations

13 Advanced Settings

Network Address Translation (NAT) allows multiple users at your local site to access the Internet through a single Public IP Address or multiple Public IP Addresses. NAT provides Firewall protection from hacker attacks and has the flexibility to allow you to map Private IP Addresses to Public IP Addresses for key services such as Websites and FTP. Select Disable to disable the NAT function.

Port Forwarding

Port Forwarding allows you to re-direct a particular range of service port numbers (from the Internet/WAN Port) to a particular LAN IP address. It helps you to host servers behind the router NAT firewall.

Advanced

Enable Port fw. Virt. Serv. Spec. App. ALG UPNP OoS

Entries in this table allow you to automatically redirect common network services to a specific PC behind the NAT firewall. These settings are only necessary if you wish to host some sort of server like a web server or mail server on the local network.

Enable Port Forwarding

Local IP	Type	Port range	Comment
<input type="text"/>	Both	<input type="text"/> - <input type="text"/>	<input type="text"/>

Add Reset

Current Port Forwarding Table:

NO.	Local IP	Type	Port range	Comment	Select
-----	----------	------	------------	---------	--------

Delete Selected Delete All Reset

Apply Cancel

Enable Port Forwarding Enable Port Forwarding

Private IP This is the private IP of the server behind the NAT firewall.

Type This is the protocol type to be forwarded. You can choose to forward "TCP" or "UDP" packets only, or select "both" to forward both "TCP" and "UDP" packets.

Port Range The range of ports to be forward to the private IP.

Comment description of this setting.

Add Port Forwarding Fill in the "Private IP", "Type", "Port Range" and "Comment" of the setting to be added and then click "Add". Then this Port Forwarding setting will be added into the "Current Port Forwarding Table" below.

Remove Port Forwarding If you want to remove a Port Forwarding setting from the "Current Port Forwarding Table", select the Port Forwarding setting that you want to remove in the table and then click "Delete Selected". If you want to remove all Port Forwarding settings from the table, just click "Delete All" button. Click "Reset" will clear your current selections.

Virtual Server

Use the Virtual Server function when you want different servers/clients in your LAN to handle different service/Internet application type (e.g. Email, FTP, Web server etc.) from the Internet. Computers use numbers called port numbers to recognize a particular service/Internet application type. The Virtual Server allows you to re-direct a particular service port number (from the Internet/WAN Port) to a particular LAN private IP address and its service port number.

Advanced

Enable Port fw. **Virt. Serv.** Spec. App. ALG UPNP OoS

You can configure the router as a Virtual Server allowing remote users to access services such as Web or FTP at your local PC. Depending on the requested service (TCP/UDP) port number, the router will redirect the external service request to the appropriate internal server (located at one of your local PCs).

Enable Virtual Server

Local IP	Local Port	Type	Public Port	Comment
<input type="text"/>	<input type="text"/>	TCP	<input type="text"/>	<input type="text"/>

Add Reset

Current Virtual Server Table:

NO.	Local IP	Local Port	Type	Public Port	Comment	Select
-----	----------	------------	------	-------------	---------	--------

Delete Selected Delete All Reset

Enable Virtual Server Enable Virtual Server.

Private IP This is the LAN client/host IP address that the Public Port number packet will be sent to.

Private Port This is the port number (of the above Private IP host) that the below **Public Port** number will be changed to when the packet enters your **LAN** (to the LAN Server/Client IP)

Type Select the port number protocol type (TCP, UDP or both). If you are unsure, then leave it to the default "both" setting. **Public Port** Enter the service (service/Internet application) port number from the Internet that will be re-directed to the above Private IP address host in your LAN

Comment The description of this setting.

Add Virtual Server Fill in the "Private IP", "Private Port", "Type", "Public Port" and "Comment" of the setting to be added and then click "Add". Then

this Virtual Server setting will be added into the "Current Virtual Server Table" below.

Remove Virtual Server If you want to remove Virtual Server settings from the "Current Virtual Server Table", select the Virtual Server settings you want to remove in the table and then click "Delete Selected". If you want to remove all Virtual Server settings from the table, just click the "Delete All" button. Click "Reset" will clear your current selections.

Click **<Apply>** at the bottom of the screen to save the above configurations.

Special Applications

Some applications require multiple connections, such as Internet games, video Conferencing, Internet telephony and others. In this section you can configure the router to support multiple connections for these types of applications.

Enable Trigger Port Enable the Special Application function.

Trigger Port This is the out going (Outbound) range of port numbers for this particular application.

Trigger Type Select whether the outbound port protocol is "TCP", "UDP" or both.

Public Port Enter the In-coming (Inbound) port or port range for this type of application (e.g. 2300-2400, 47624)

Some applications require multiple connections, such as Internet gaming, video conferencing, Internet telephony and others. These applications cannot work when Network Address Translation (NAT) is enabled. If you need to run applications that require multiple connections, specify the port normally associated with an application in the "Trigger Port" field, select the protocol type as TCP or UDP, then enter the public ports associated with the trigger port to open them for inbound traffic.

Enable Trigger Port

Trigger port	Trigger type	Public Port	Public type	Comment
<input type="text"/> - <input type="text"/>	Both ▾	<input type="text"/>	Both ▾	<input type="text"/>
Popular applications :		<input type="text" value="Select an application"/>	<input type="button" value="Add"/>	

Current Trigger-Port Table:

NO.	Trigger port	Trigger type	Public Port	Public type	Comment	Select
-----	--------------	--------------	-------------	-------------	---------	--------

Public Type Select the Inbound port protocol type: "TCP", "UDP" or both

Comment The description of this setting.

Popular applications This section lists the more popular applications that require multiple connections. Select an application from the Popular

Applications selection. Once you have selected an application, select a location (1-10) in the Copy to selection box and then click the Copy to button. This will automatically list the Public Ports required for this popular application in the location (1-10) you specified.

Add Special Application Fill in the "Trigger Port", "Trigger Type", "Public Port", "Public Type", "Public Port" and "Comment" of the setting to be added and then

click "Add". The Special Application setting will be added into the "Current Trigger-Port Table" below. If you happen to make a mistake, just click "Clear" and the fields will be cleared.

Remove If you want to remove Special Application settings from the "Current Trigger-Port Table", select the Special Application settings you want to remove in the table and then click "Delete Selected". If you want remove all Special Application settings from the table, just click the "Delete All" button. Click "Reset" will clear your current selections.

ALG

You can select applications that need "Application Layer Gateway" support

Enable	Name	Select
<input type="checkbox"/>	MSN	Support for MSN file transfer.
<input type="checkbox"/>	H323	Support for H323/netmeeting.
<input type="checkbox"/>	MMS	Support for Microsoft Streaming Media Services protocol.
<input type="checkbox"/>	TFTP	Support for TFTP.
<input type="checkbox"/>	Egg	Support for eggdrop bot networks.
<input type="checkbox"/>	IRC	Allows DCC to work through NAT and connection tracking.
<input type="checkbox"/>	Amanda	Support for Amanda backup tool protocol.
<input type="checkbox"/>	Quake3	Support for Quake III Arena connection tracking and nat.
<input type="checkbox"/>	Talk	Allows netfilter to track talk connections.
<input type="checkbox"/>	IPsec	Support for IPsec passthrough
<input type="checkbox"/>	Starcraft	Support for Starcraft/Battle.net game protocol.
<input type="checkbox"/>	FTP	Support for FTP.

Enable select enable "Application Layer Gateway", then the router will let the selected application to correctly pass through the NAT gateway.

UPNP

With UPnP, all PCs in your Intranet will discover this router automatically. So, you don't have to configure your PC and it can easily access the Internet through this router.

Advanced



Universal Plug and Play is designed to support zero-configuration, "invisible" networking, and automatic discovery for a range of device from a wide range of vendors. With UPnP, a device can dynamically join a network, obtain an IP address and learn about the presence and capabilities of other devices all automatically. Devices can subsequently communicate with each other directly.

UPnP : Enable Disable

UPnP Feature Disable You can enable or Disable the UPnP feature here. After you enable the UPnP feature, all client systems that support UPnP, like Windows XP, can discover this router automatically and access the Internet through this router without having to configure anything. The NAT Traversal function provided by UPnP can let applications that support UPnP connect to the internet without having to configure the virtual server sections.

QoS

QoS can let you classify Internet application traffic by source/destination IP address and port number. You can assign priority for each type of application and reserve bandwidth for it. The packets of applications with higher priority will always go first. Lower priority applications will get bandwidth after higher priority applications get enough bandwidth. This can let you have a better experience in using critical real time services like Internet phone, video conference ...etc. All the applications not specified by you are classified as rule name "Others". The rule with a smaller priority number has a higher priority; the rule with a larger priority number has a lower priority. You can adjust the priority of the rules by moving them up or down.

Advanced

Enable Port fw. Virt. Serv. Spec. App. ALG UPNP **QoS**

Quality of Service (QoS) refers to the capability of a network to provide better service to selected network traffic. The primary goal of QoS is to provide priority including dedicated bandwidth, controlled jitter and latency (required by some real-time and interactive traffic), and improved loss characteristics. Also important is making sure that providing priority for one or more flows does not make other flows fail.

Enable QoS

Current QoS Table:

Priority	Rule Name	Upload Bandwidth	Download Bandwidth	Select
----------	-----------	------------------	--------------------	--------

Add Edit Delete Selected Delete All Move Up Move Down
Reset

Apply Cancel

Enable/Disable QoS You can check "Enable QoS" to enable QoS functionality for the WAN port.

Add a QoS rule into the table Click "Add" then enter a form of the QoS rule. Click "Apply" after filling out the form the rule will be added into the table.

Remove QoS rules from the table If you want to remove QoS rules from the table, select the QoS rules you want to remove in the table and then click "Delete Selected". If you want remove all QoS rules from the table, just click the "Delete All" button. Clicking "Reset" will clear your current selections.

Edit a QoS rule Select the rule you want to edit and click "Edit", then enter the detail form of the QoS rule. Click "**Apply**" after editing the form and the rule will be saved.

Adjust QoS rule priority You can select the rule and click "Move Up" to make its priority higher. You also can select the rule and click "Move Down" to make its priority lower.

14 TOOLBOX Settings

Password change options

You can change the password required to log into the broadband router's system web-based management. By default, the password is: admin. Passwords can contain 0 to 12 alphanumeric characters, and are case sensitive.

Current Password Fill in the current password to allow changing to a new password.

New Password Enter your new password

Confirmed Password Enter your new password again for verification purposes

Click <**Apply**> at the bottom of the screen to save the above configurations

Toolbox



You can change the password which is required to log on to the router. By default, the password is admin. Passwords can contain 0 to 12 alphanumeric characters, and are case sensitive.

Current password :	<input type="password" value="•••••"/>
New password :	<input type="password" value="••••••••"/>
Confirm password :	<input type="password" value="••••••••"/>

Time Zone

The Time Zone allows your router to base its time on the settings configured here, which will affect functions such as Log entries and Firewall settings.

Toolbox

[Password](#) **[Timezone](#)** [Remote](#) [Firmware](#) [Back-up](#) [Reset](#) [DDNS](#)

Set the time zone of the Broadband router. This information is used for log entries and firewall settings.

Set Time Zone :	(GMT)Greenwich Mean Time: Dublin, Edinburgh, Lisbon, London ▾
Time Server Address :	europa.pool.ntp.org
Daylight Saving :	<input checked="" type="checkbox"/> Enable From <input type="text" value="January"/> <input type="text" value="1"/> To <input type="text" value="January"/> <input type="text" value="1"/>

Set Time Zone Select the time zone of the country you are currently in. The router will set its time based on your selection.

Time Server Address You can set an NTP server address.

Enable Daylight Savings The router can also take Daylight savings into account. If you wish to use this function, you must check/tick the enable box to enable your daylight saving configuration (below).

Start Daylight Savings Time Select the period in which you wish to start daylight Savings Time

End Daylight Savings Time Select the period in which you wish to end daylight Savings Time

Click <**Apply**> at the bottom of the screen to save the above configurations

Remote Management

The remote management function allows you to designate a host in the Internet the ability to configure the Broadband router from a remote site. Enter the designated host IP Address in the Host IP Address field.

Toolbox

Password Timezone **Remote** Firmware Back-up Reset DDNS

The remote management function allows you to designate a host from the Internet to have management/configuration access to the router from a remote site. Enter the designated host IP Address in the Host IP Address field.

Host Address	port	Enable
<input type="text" value="192.168.0.242"/>	<input type="text" value="8080"/>	<input checked="" type="checkbox"/>

Host Address This is the IP address of the host in the Internet that will have management/configuration access to the Broadband router from a remote site. If the Host Address is left 0.0.0.0 this means anyone can access the router's web-based configuration from a remote location, providing they know the password.

Port The port number of the remote management web interface.

Enabled Select "**Enabled**" to enable the remote management function.

Click **<Apply>** at the bottom of the screen to save the above configurations.

Firmware Upgrade

This page allows you to upgrade the router's firmware.

Toolbox

Password Timezone Remote **Firmware** Back-up Reset DDNS

This tool allows you to upgrade the Routers firmware. Browse to and select the upgrade file and click APPLY. You will be prompted to confirm the upgrade.

est FW 0.8\appsNSR\9750.dlf Browse...

Apply Cancel

Firmware Upgrade This tool allows you to upgrade the Broadband router's system firmware. To upgrade the firmware of your Broadband router, you need to download the firmware file to your local hard disk, and enter that file name and path in the appropriate field on this page. You can also use the Browse button to find the firmware file on your PC.

Once you've selected the new firmware file, click **<Apply>** at the bottom of the screen to start the upgrade process

Backup Settings

The Backup screen allows you to save (Backup) the router's current configuration settings. When you save the configuration setting (Backup) you can re-load the saved configuration into the router through the Restore selection. If extreme problems occur you can use the Restore to Factory Defaults selection, this will set all configurations to its original default settings (e.g. when you first purchased the router).

Toolbox

Password Timezone Remote Firmware **Back-up** Reset DDNS

Use BACKUP to save the routers current configuration to a file named config.bin. You can use RESTORE to restore the saved configuration. Alternatively, you can use RESTORE TO FACTORY DEFAULT to force the router to restore the factory default settings.

Restore to factory default :	<input type="button" value="Reset"/>
Backup settings:	<input type="button" value="Save"/>
Restore Settings:	<input type="text"/> <input type="button" value="Browse..."/>
	<input type="button" value="Upload"/>

Use the "Backup" tool to save the Broadband router current configuration to a file named "**config.bin**" on your PC. You can then use the "Restore" tool to restore the saved configuration to the Broadband router. Alternatively, you can use the "Restore to Factory Defaults" tool to force the Broadband router to perform a power reset and restore the original factory settings.

Reset

You can reset the router's system should any problem exist. The reset function essentially re-boots your router's system.

Toolbox

Password Timezone Remote Firmware Back-up **Reset** DDNS

In the event the system stops responding correctly or stops functioning, you can perform a reset. Your settings will not be changed. To perform the reset, click on the APPLY button. You will be asked to confirm your decision. The reset will be completed when the LED Power light stops blinking.

Apply Cancel

DDNS

DDNS allows you to map the static domain name to a dynamic IP address. You must get an account, password and your static domain name from the DDNS service providers. This router supports DynDNS, TZO and other common DDNS service providers.

Toolbox

Password Timezone Remote Firmware Back-up Reset **DDNS**

DDNS allows users to map a static domain name to a dynamic IP address. You must get an account, password and your static domain name from the DDNS service provider. The router has DDNS support for www.dyndns.org and www.dhs.org.

Dynamic DNS :	<input checked="" type="radio"/> Enable <input type="radio"/> Disable
Provider :	DynDNS ▾
Domain name :	<input type="text"/>
Account/E-mail :	<input type="text"/>
Password/Key :	<input type="text"/>

Apply Cancel

Enable/Disable Enable/Disable the DDNS function of this router

Provider Select a DDNS service provider

Domain name Fill in your static domain name that uses DDNS

Account/E-mail The account that your DDNS service provider assigned to you

Password/Key The password you set for the DDNS service account above

Click <**Apply**> at the bottom of the screen to save the above configurations.

Parts of the firmware of the WL-303/WL-312 Wireless Broadband router are subject to the [GNU general public license](#).

Appendix A: Licensing Information

This product includes third-party software licensed under the terms of the [GNU General Public License](#). You can modify or redistribute this free software under the terms of the [GNU General Public License](#). Please see Appendix B for the exact terms and conditions of this license.

Specifically, the following part of this product are subject to the GNU GPL:

#	Package name	Source
1	Linux v2.4.30	www.kernel.org
2	Iptables v1.3.5	www.netfilter.org/
3	Bridge-utils v1.2	bridge.sourceforge.net/
4	Busybox v1.7.4	www.busybox.net/
5	Rp-pppoe v3.8	freshmeat.net/projects/rp-pppoe/
6	Pptp-client v1.7.1	pptpclient.sourceforge.net/
7	Ppp v2.4.3	ppp.samba.org/
8	Udhcp v0.9.9-pre	udhcp.busybox.net/
9	iproute2 v2.6.16-060323	www.linux-foundation.org/en/Net:Iproute2
10	Dnsmasq v2.39	www.thekelleys.org.uk/dnsmasq/doc.html
11	Ez-ipupdate v3.0.11b8	ez-ipupdate.com/
12	Libupnp v1.6.0	upnp.sourceforge.net/
13	Wireless-tools v28	RaLink SDK 2.1.0.0
14	U-boot v1.1.3	RaLink SDK 2.1.0.0
15	gcc-3.3.6	RaLink SDK 2.1.0.0
16	Uclibc-0.9.29	RaLink SDK 2.1.0.0

Availability of source code

Sitecom Europe BV has made available the full source code of the GPL licensed software, including any scripts to control the compilation and installation of the object code [in the driver section of this product](#).

No Warranty

The free software included in this product is distributed in the hope that it will be useful, but WITHOUT ANY LIABILITY OF OR ANY WARRANTY FROM THE LICENSOR.

Appendix B: GNU GENERAL PUBLIC LICENSE

Version 2, June 1991 Copyright (C) 1989, 1991 Free Software Foundation, Inc. 59 Temple Place - Suite 330, Boston, MA 02111-1307, USA Everyone is permitted to copy and distribute verbatim copies of this license document, but changing it is not allowed.

Preamble

The licenses for most software are designed to take away your freedom to share and change it. By contrast, the GNU General Public License is intended to guarantee your freedom to share and change free software--to make sure the software is free for all its users. This General Public License applies to most of the Free Software Foundation's software and to any other program whose authors commit to using it. (Some other Free Software Foundation software is covered by the GNU Library General Public License instead.) You can apply it to your programs, too. When we speak of free software, we are referring to freedom, not price. Our General Public Licenses are designed to make sure that you have the freedom to distribute copies of free software (and charge for this service if you wish), that you receive source code or can get it if you want it, that you can change the software or use pieces of it in new free programs; and that

you know you can do these things. To protect your rights, we need to make restrictions that forbid anyone to deny you these rights or to ask you to surrender the rights. These restrictions translate to certain responsibilities for you if you distribute copies of the software, or if you modify it. For example, if you distribute copies of such a program, whether gratis or for a fee, you must give the recipients all the rights that you have. You must make sure that they, too, receive or can get the source code. And you must show them these terms so they know their rights. We protect your rights with two steps: (1) copyright the software, and (2) offer you this license which gives you legal permission to copy, distribute and/or modify the software. Also, for each author's protection and ours, we want to make certain that everyone understands that there is no warranty for this free software. If the software is modified by someone else and passed on, we want its recipients to know that what they have is not the original, so that any problems introduced by others will not reflect on the original authors' reputations. Finally, any free program is threatened constantly by software patents. We wish to avoid the danger that redistributors of a free program will individually obtain patent licenses, in effect making the program proprietary. To prevent this, we have made it clear that any patent must be licensed for everyone's free use or not licensed at all. The precise terms and conditions for copying, distribution and modification follow.

TERMS AND CONDITIONS FOR COPYING, DISTRIBUTION AND MODIFICATION

0.

This License applies to any program or other work which contains a notice placed by the copyright holder saying it may be distributed under the terms of this General Public License. The "Program", below, refers to any such program or work, and a "work based on the Program" means either the Program or any derivative work under copyright law: that is to say, a work containing the Program or a portion of it, either verbatim or with modifications and/or translated into another language. (Hereinafter, translation is included without limitation in the term "modification".) Each licensee is addressed as "you". Activities other than copying, distribution and modification are not covered by this License; they are outside its scope. The act of running the Program is not restricted, and the output from the Program is covered only if its contents constitute a work based on the Program (independent of having been made by running the Program). Whether that is true depends on what the Program does.

1.

You may copy and distribute verbatim copies of the Program's source code as you receive it, in any medium, provided that you conspicuously and appropriately publish on each copy an appropriate copyright notice and disclaimer of warranty; keep intact all the notices that refer to this License and to the absence of any warranty; and give any other recipients of the Program a copy of this License along with the Program. You may charge a fee for the physical act of transferring a copy, and you may at your option offer warranty protection in exchange for a fee.

2.

You may modify your copy or copies of the Program or any portion of it, thus forming a work based on the Program, and copy and distribute such modifications or work under the terms of Section 1 above, provided that you also meet all of these conditions: a) You must cause the modified files to carry prominent notices stating that you changed the files and the date of any change. b) You must cause any work that you distribute or publish, that in whole or in part contains or is derived from the Program or any part thereof, to be licensed as a whole at no charge to all third parties under the terms of this License. c) If the modified program normally reads commands interactively when run, you must cause it, when started running for such interactive use in the most ordinary way, to print or display an announcement including an appropriate copyright notice and a notice that there is no warranty (or else, saying that you provide a warranty) and that users may redistribute the program under these conditions, and telling the user how to view a copy of this License. (Exception: if the Program itself is interactive but does not normally print such an announcement, your work based on the Program is not required to print an announcement.) These requirements apply to the modified work as a whole. If identifiable sections of that work are not derived from the Program, and can be reasonably considered independent and separate works in themselves, then this License, and its terms, do not apply to those sections when you distribute them as separate works. But when you distribute the same sections as part of a whole which is a work based on the Program, the distribution of the whole must be on the terms of this License, whose permissions for other licensees extend to the entire whole, and thus to each and every part regardless of who wrote

it. Thus, it is not the intent of this section to claim rights or contest your rights to work written entirely by you; rather, the intent is to exercise the right to control the distribution of derivative or collective works based on the Program. In addition, mere aggregation of another work not based on the Program with the Program (or with a work based on the Program) on a volume of a storage or distribution medium does not bring the other work under the scope of this License.

3.

You may copy and distribute the Program (or a work based on it, under Section 2) in object code or executable form under the terms of Sections 1 and 2 above provided that you also do one of the following: a) Accompany it with the complete corresponding machine-readable source code, which must be distributed under the terms of Sections 1 and 2 above on a medium customarily used for software interchange; or, b) Accompany it with a written offer, valid for at least three years, to give any third party, for a charge no more than your cost of physically performing source distribution, a complete machine-readable copy of the corresponding source code, to be distributed under the terms of Sections 1 and 2 above on a medium customarily used for software interchange; or, c) Accompany it with the information you received as to the offer to distribute corresponding source code. (This alternative is allowed only for noncommercial distribution and only if you received the program in object code or executable form with such an offer, in accord with Subsection b above.) The source code for a work means the preferred form of the work for making modifications to it. For an executable work, complete source code means all the source code for all modules it contains, plus any associated interface definition files, plus the scripts used to control compilation and installation of the executable. However, as a special exception, the source code distributed need not include anything that is normally distributed (in either source or binary form) with the major components (compiler, kernel, and so on) of the operating system on which the executable runs, unless that component itself accompanies the executable. If distribution of executable or object code is made by offering access to copy from a designated place, then offering equivalent access to copy the source code from the same place counts as distribution of the source code, even though third parties are not compelled to copy the source along with the object code.

4.

You may not copy, modify, sublicense, or distribute the Program except as expressly provided under this License. Any attempt otherwise to copy, modify, sublicense or distribute the Program is void, and will automatically terminate your rights under this License. However, parties who have received copies, or rights, from you under this License will not have their licenses terminated so long as such parties remain in full compliance.

5.

You are not required to accept this License, since you have not signed it. However, nothing else grants you permission to modify or distribute the Program or its derivative works. These actions are prohibited by law if you do not accept this License. Therefore, by modifying or distributing the Program (or any work based on the Program), you indicate your acceptance of this License to do so, and all its terms and conditions for copying, distributing or modifying the Program or works based on it.

6.

Each time you redistribute the Program (or any work based on the Program), the recipient automatically receives a license from the original licensor to copy, distribute or modify the Program subject to these terms and conditions. You may not impose any further restrictions on the recipients' exercise of the rights granted herein. You are not responsible for enforcing compliance by third parties to this License.

7.

If, as a consequence of a court judgment or allegation of patent infringement or for any other reason (not limited to patent issues), conditions are imposed on you (whether by court order, agreement or otherwise) that contradict the conditions of this License, they do not excuse you from the conditions of this License. If you cannot distribute so as to satisfy simultaneously your obligations under this License and any other pertinent obligations, then as a consequence you may not distribute the Program at all. For example, if a patent license would not permit royalty-free redistribution of the Program by all those who receive copies directly or indirectly through you, then the only way you could satisfy both it and this License would be to refrain entirely from distribution of the Program. If any portion of this section is held invalid or unenforceable under any particular circumstance, the balance of the section is intended to apply and the section as a whole is intended to apply in other circumstances. It is not the purpose of this section to induce you to infringe any patents or other property right claims or to contest validity of any such claims; this section has the sole purpose of protecting the integrity of the free software distribution system, which is implemented by public license practices. Many people

have made generous contributions to the wide range of software distributed through that system in reliance on consistent application of that system; it is up to the author/donor to decide if he or she is willing to distribute software through any other system and a licensee cannot impose that choice. This section is intended to make thoroughly clear what is believed to be a consequence of the rest of this License.

8.

If the distribution and/or use of the Program is restricted in certain countries either by patents or by copyrighted interfaces, the original copyright holder who places the Program under this License may add an explicit geographical distribution limitation excluding those countries, so that distribution is permitted only in or among countries not thus excluded. In such case, this License incorporates the limitation as if written in the body of this License.

9.

The Free Software Foundation may publish revised and/or new versions of the General Public License from time to time. Such new versions will be similar in spirit to the present version, but may differ in detail to address new problems or concerns. Each version is given a distinguishing version number. If the Program specifies a version number of this License which applies to it and "any later version", you have the option of following the terms and conditions either of that version or of any later version published by the Free Software Foundation. If the Program does not specify a version number of this License, you may choose any version ever published by the Free Software Foundation.

10.

If you wish to incorporate parts of the Program into other free programs whose distribution conditions are different, write to the author to ask for permission. For software which is copyrighted by the Free Software Foundation, write to the Free Software Foundation; we sometimes make exceptions for this. Our decision will be guided by the two goals of preserving the free status of all derivatives of our free software and of promoting the sharing and reuse of software generally.

NO WARRANTY

11.

BECAUSE THE PROGRAM IS LICENSED FREE OF CHARGE, THERE IS NO WARRANTY FOR THE PROGRAM, TO THE EXTENT PERMITTED BY APPLICABLE LAW. EXCEPT WHEN OTHERWISE STATED IN WRITING THE COPYRIGHT HOLDERS AND/OR OTHER PARTIES PROVIDE THE PROGRAM "AS IS" WITHOUT WARRANTY OF ANY KIND, EITHER EXPRESSED OR IMPLIED, INCLUDING, BUT NOT LIMITED TO, THE IMPLIED WARRANTIES OF MERCHANTABILITY AND FITNESS FOR A PARTICULAR PURPOSE. THE ENTIRE RISK AS TO THE QUALITY AND PERFORMANCE OF THE PROGRAM IS WITH YOU. SHOULD THE PROGRAM PROVE DEFECTIVE, YOU ASSUME THE COST OF ALL NECESSARY SERVICING, REPAIR OR CORRECTION.

12.

IN NO EVENT UNLESS REQUIRED BY APPLICABLE LAW OR AGREED TO IN WRITING WILL ANY COPYRIGHT HOLDER, OR ANY OTHER PARTY WHO MAY MODIFY AND/OR REDISTRIBUTE THE PROGRAM AS PERMITTED ABOVE, BE LIABLE TO YOU FOR DAMAGES, INCLUDING ANY GENERAL, SPECIAL, INCIDENTAL OR CONSEQUENTIAL DAMAGES ARISING OUT OF THE USE OR INABILITY TO USE THE PROGRAM (INCLUDING BUT NOT LIMITED TO LOSS OF DATA OR DATA BEING RENDERED INACCURATE OR LOSSES SUSTAINED BY YOU OR THIRD PARTIES OR A FAILURE OF THE PROGRAM TO OPERATE WITH ANY OTHER PROGRAMS), EVEN IF SUCH HOLDER OR OTHER PARTY HAS BEEN ADVISED OF THE POSSIBILITY OF SUCH DAMAGES.

END OF TERMS AND CONDITIONS