

NETCOMM LIBERTY™ SERIES

# 3G Wireless N150 Mini Router m1

*NetComm*®



USER GUIDE

## Preface

This manual provides information related to the installation, operation, and application of this device. The individual reading this manual is presumed to have a basic understanding of telecommunications terminology and concepts.

If you find the product to be broken or malfunctioning, please contact technical support for immediate service by email at [technicalsupport@netcomm.com.au](mailto:technicalsupport@netcomm.com.au)

For product update, new product release, manual revision, or software upgrades, please visit our website at [www.netcomm.com.au](http://www.netcomm.com.au)

### Important Safety Instructions

With reference to unpacking, installation, use and maintenance of your electronic device, the following basic guidelines are recommended:

- Do not use or install this product near water, to avoid fire or shock hazard. For example, near a bathtub, kitchen sink or laundry tub, or near a swimming pool. Also, do not expose the equipment to rain or damp areas (e.g. a wet basement).
- Do not connect the power supply cord on elevated surfaces. Allow it to lie freely. There should be no obstructions in its path and no heavy items should be placed on the cord. In addition, do not walk on, step on or mistreat the cord.
- Use only the power cord and adapter that are shipped with this device.
- To safeguard the equipment against overheating, make sure that all openings in the unit that offer exposure to air are not blocked.
- Avoid using a telephone (other than a cordless type) during an electrical storm. There may be a remote risk of electric shock from lightning. Also, do not use the telephone to report a gas leak in the vicinity of the leak.
- Never install telephone wiring during stormy weather conditions.



### WARNING

- Disconnect the power line from the device before servicing.

### Copyright

Copyright©2010 NetComm Limited. All rights reserved. The information contained herein is proprietary to NetComm Limited. No part of this document may be translated, transcribed, reproduced, in any form, or by any means without prior written consent of NetComm Limited

NOTE: This document is subject to change without notice.

### Save Our Environment

When this equipment has reached the end of its useful life, it must be taken to a recycling centre and processed separate from domestic waste.

The cardboard box, the plastic contained in the packaging, and the parts that make up this router can be recycled in accordance with regionally established regulations. Never dispose of this electronic equipment along with your household waste. You may be subject to penalties or sanctions under the law. Instead, ask for disposal instructions from your municipal government.

Please be responsible and protect our environment.

# Table of Contents

<b>Overview</b> .....	<b>5</b>
What's in the box?.....	5
Key Features:.....	5
<b>Getting Started</b> .....	<b>7</b>
Network and System Requirements .....	7
Placement of your NetComm m1 .....	7
Avoid obstacles and interferences .....	8
Cordless Phones .....	8
Choosing the "Quietest" Channel for your Wireless Network .....	8
LED Indicators:.....	8
<b>Getting Online in 5 Minutes:</b> .....	<b>10</b>
Hardware Installation .....	10
Establishing WiFi Connection .....	10
Connecting your device to the Internet .....	10
3G Network Settings .....	11
Further Configuration and Reset .....	12
Connecting to your NetComm m1 Wireless Network from Mac OS X .....	12
Connecting to your NetComm m1 Wireless Network from a Windows PC .....	14
Settings in the NetComm m1 Web Configuration Wizard .....	16
<b>Basic Settings</b> .....	<b>18</b>
Basic Settings >Network Setup.....	19
<b>DHCP Server</b> .....	<b>22</b>
<b>Basic Settings &gt;Wireless</b> .....	<b>24</b>
WPS (WiFi Protected Setup).....	25
Wireless Client List .....	25
Basic Settings > Change Password .....	26
<b>Security Settings</b> .....	<b>28</b>
Security Settings > Packet Filters .....	28
Security Settings > URL Blocking.....	29
Security Settings > MAC Control.....	30
Security Settings > Miscellaneous .....	31
<b>Advanced Settings</b> .....	<b>33</b>
Advanced Settings > System Log .....	33
Advanced Settings > System Time.....	34
<b>Tool Box</b> .....	<b>37</b>
Tool Box > System Info .....	37
Tool Box> Firmware Upgrade.....	37
Tool Box > Backup Setting.....	38
Tool Box > Reset to Default.....	38
Tool Box > Reboot .....	38
<b>Troubleshooting</b> .....	<b>40</b>
<b>Legal &amp; Regulatory Information</b> .....	<b>42</b>

# OVERVIEW

# Overview



3G Wireless N150 Mini Router m1; this product is specifically designed for the mobile user who needs to have internet access beyond his home and office. It provides a complete solution for Internet surfing and broadband sharing. Instructions for installing and configuring this product can be found in this manual. Before you install and use this product, please read this manual carefully to fully utilise the functions of this product.

## What's in the box?

Your 3G Wireless N150 Mini Router m1 package contains the following items:

- 3G Wireless N150 Mini Router m1
- Quick Installation Guide
- User Guide on CD
- USB Cable
- Power Supply Unit

If any of the above items are damaged or missing, please contact your dealer immediately.

## Key Features:

- Ultra compact 3G wireless router with internal antenna and hanging clip
- Supports Wireless N standard with WLAN data speeds up to 150Mbps<sup>1</sup>
- Pocket sized, easy to carry anywhere
- Easy WiFi Protected Setup (WPS) by the single touch of a button to establish a secure wireless connection
- Full Wireless security - WEP, WPA, WPA2
- Browser based interface for configuration and management: OS independent and easy to use

<sup>1</sup> Maximum wireless signal rate and coverage values are derived from IEEE Standard 802.11g and 802.11n specifications. Actual wireless speed and coverage are dependent on network and environmental conditions included but not limited to volume of network traffic, building materials and construction/layout

# Getting Started

# Getting Started

## Network and System Requirements

Before continuing with the setup of your NetComm m1, please confirm that you comply with the minimum system requirements below.

- Compatible 3G USB modem with an activated SIM card
- Computer or smart phone with Windows, Nokia Symbian, Android, Macintosh or Linux-based operating systems with TCP/IP protocol installed and working, and a IEEE 802.11g, IEEE 802.11b or IEEE 802.11n compatible wireless adapter
- Web browser such as Internet Explorer, Safari, Mozilla Firefox, Opera, Google Chrome, Netscape Navigator etc.

## Placement of your NetComm m1

Your wireless connection and performance will degrade as the distance between your NetComm m1 and connected devices increases. This may or may not be directly noticeable, and is greatly affected by the individual setup environment.

If you have concerns about your network performance that might be related to range or obstruction factors, try moving the computer (or WiFi device) to a position between 3 to 5 metres from your NetComm m1 in order to see if distance is the problem. If difficulties persist even at close range, please contact NetComm Technical Support.

**Note:** While some of the items listed below can affect network performance, they will not prohibit your wireless network from functioning; if you are concerned that your network is not operating at its maximum effectiveness, this checklist may help.  
It is highly recommended that the NetComm m1 must be kept at least 20cm distances away from human body. This is a regulatory requirement and applies to all 3G / WiFi capable devices meeting standard regulatory compliance – Please see the section on Safety and Legal Information for more information.

Place your NetComm m1 as close as possible to the centre of your wireless network devices.

To achieve the best wireless network coverage for your “wireless clients” (i.e. computers with built-in or USB wireless adapters, laptops with built-in or USB wireless adapters, wireless enabled PDAs / Phones or wireless enabled gaming consoles, etc); ensure that your NetComm m1 is positioned vertically. You can do this by detaching the front faceplate and using its “clip” onto a surface.



- In multi-storey homes, place your NetComm m1 on a floor that is as close to the centre of the home as possible. This may mean placing your NetComm m1 on an upper floor.
- Try not to place your NetComm m1 near a cordless telephone that operates at the same radio frequency as the NetComm m1 (2.4GHz).

## Avoid obstacles and interferences

Avoid placing your NetComm m1 near devices that may emit radio “noise,” such as microwave ovens. Dense objects can also inhibit your wireless signal. Some examples of dense objects that can inhibit wireless communication include:

- Refrigerators
- Washers and/or dryers
- Metal cabinets
- Large aquariums
- Metallic-based, UV-tinted windows
- If your wireless signal seems weak in some spots, make sure that objects such as these are not blocking the signal path between your devices and your NetComm m1.

## Cordless Phones

If the performance of your wireless network is impaired after considering the above issues, and you have a cordless phone:

- Try moving cordless phones away from your NetComm m1 and your wireless-enabled computers.
- Unplug and remove the battery from any cordless phone that operates on the 2.4GHz band (check manufacturer’s information). If this fixes the problem, your phone may be interfering with the WiFi of your NetComm m1.
- If your phone supports channel selection, change the channel on the phone to the farthest channel from your wireless network. For example, change the phone to channel 1 and set your NetComm m1 to channel 11. See your phone user manual for detailed instructions.
- If necessary, consider switching to a 900MHz or 5GHz cordless phone.

## Choosing the “Quietest” Channel for your Wireless Network

In locations where homes or offices are close together, such as apartment buildings or office complexes, there may be wireless networks nearby that can conflict with your wireless network.

Use the site survey capability found in the wireless utility of your wireless adapter to locate any other wireless networks that are available (see your wireless adapter’s user manual for assistance with this), and switch your NetComm m1 to a channel as far away from other networks’ channel as possible.

Hint: Most WiFi routers set their Wireless G networks to channel 6. Changing the channel to something other than 6 may help improve your wireless network performance.

- Experiment with more than one of the available channels in order to find the clearest connection and avoid interference from neighbouring cordless phones or other wireless devices.

## LED Indicators:



	LED color	Description
USB LED	Blue	3G/3.5G is on
	Flashing Blue	Data access
WiFi LED	Blue	WLAN is ON
	Flashing Blue	Data access
	Fast Flashing Blue	Device is in WPS Mode



Getting Online in 5 minutes

# Getting Online in 5 Minutes:

## Hardware Installation

1. Connect power to the NetComm m1 by either:
  - A) Connecting the supplied power adapter to a wall power outlet and to the port labelled Power on the side of the NetComm m1
  - B) Connecting the supplied USB cable to the port labelled Power on the NetComm m1 and connects both USB connectors on the other end to compatible USB ports on your laptop/desktop computer.
2. Slide the power switch to the ON position and wait around 2 minutes to allow the device to power up.
3. Connect a compatible 3G USB Modem to the 3G USB port of the NetComm m1. If you are unsure whether your 3G USB Modem is compatible with the NetComm m1, please check the compatibility list on the NetComm website.

## Establishing WiFi Connection

The NetComm m1 creates a personal WiFi coverage zone to provide Internet access to WiFi enabled devices.

1. Using your WiFi enabled device, scan for wireless networks in your area and select the network called NetComm Wireless.
2. Enter the following default security key: a1b2c3d4e5

Note: For optimal WiFi security, we recommend that you change the default settings through the web based user interface. For more details, please refer to the section titled "Basic Settings – Wireless".

## Connecting your Device to the Internet

After completing the hardware installation, you will need to enter the necessary settings in order to be able to connect to your broadband service provider. You can achieve this via the product's web based user interface by following the steps below:

1. On your computer, open a web-browser (such as Internet Explorer, Firefox, or Safari), type **192.168.1.1** into the address bar at the top of the page and press enter.
2. At the login screen, type "admin" into the system password field. Then click Login to continue.
3. Next complete the setup wizard by filling in the details of your 3G connection. If you don't know which settings to use here, please contact your service provider to obtain this information.
4. If the SIM Card in your 3G USB modem was supplied with a PIN, enter it in the respective field and confirm your PIN settings and select 'Remember PIN' if you want the PIN stored on the device.
5. After completing the wizard, wait for 2 minutes to allow the NetComm m1 to connect to the internet.
6. If you are connected successfully, the blue 3G light on the top of the unit will be lit. You can also check on the status of your connection if necessary by clicking 'Status' after logging in to the web based user interface

# NetComm Liberty Series - 3G Wireless N150 Mini Router m1

Note: Your APN (Access Point Name) is the 3G mobile network name that is used to identify your 3G mobile broadband service provider. If you don't have this information ready, please contact your service provider to obtain this information.

## APN Table: Access Point Name for various providers

MOBILE BROADBAND SERVICE PROVIDER	APN
<b>AUSTRALIA</b>	
Telstra	Telstra.Internet
	Telstra.datapack
	Telstra.pcpack
	Telstra.bigpond
Optus - post paid	connect
Optus - Prepaid	preconnect
Three - post paid	3netaccess
Three - Prepaid	3services
Vodafone - post paid	vfinternet.au
Vodafone - Prepaid	vfprepaymbb
Crazy John's	purtona.net
DoDo	dodols1
Virgin Mobile	VirginBroadband
Blink	spIns888a1
Internode	Internode
Primus	primusIns1
TPG	internet
Exetel	Exetel1
<b>NEW ZEALAND</b>	
Vodafone NZ	www.vodafone.net.nz
Virgin Mobile	VirginInternet
CallPlus	www.callplus.net.nz
Slingshot	www.slingshot.net.nz
Telstra Clear	www.telstraclear.net.nz
Telecomm NZ XT	internet.telecomm.co.nz

## Further Configuration and Reset

The NetComm m1 has been designed to work with minimal user configuration. However if you would like to set any advanced options this can be done using the “Advanced” section of the web browser based user interface.

### Advanced Settings

To access the advanced menu, click on ‘Advanced Settings’ located at the top of the web based user interface.

### Changing Wireless Settings

After logging in to the web based user configuration as described above, click on “Basic Settings” and then select “Wireless” from the menu on the left hand side to modify your network name, wireless security password or encryption strength. Save your settings by clicking the “Save” button.

### Setting a custom APN or other 3G Network settings

After logging in to the web based user configuration as described above, click on “Basic Settings” and select “Network Setup” to modify the 3G network settings. Save any changes by clicking the “Save” button.

### Reset

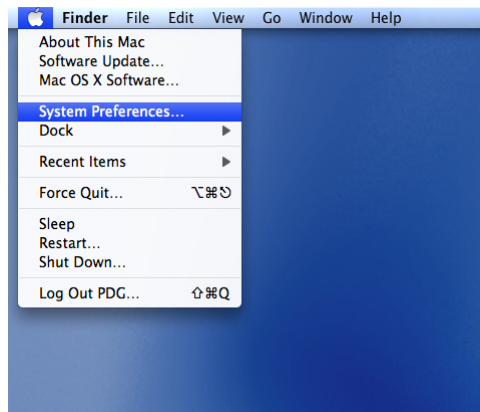
If you make any errors the NetComm m1 can be reset to factory defaults by holding the WPS button for 10 seconds.

## Connecting to your NetComm m1 Wireless Network from Mac OS X

Follow these steps to connect your MAC OSX computer to your NetComm m1 wireless network.

Click on the ‘Apple’ icon at the top left hand corner of your screen.

Click on ‘System Preferences’ option.

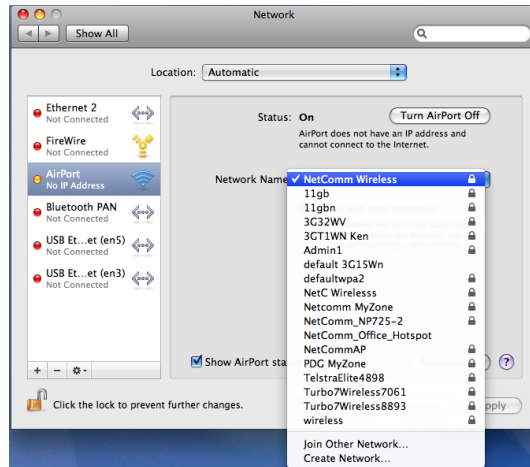


Under the ‘System Preferences’ parameters, click on the ‘Network’ icon under ‘Internet & Network’.



# NetComm Liberty Series - 3G Wireless N150 Mini Router m1

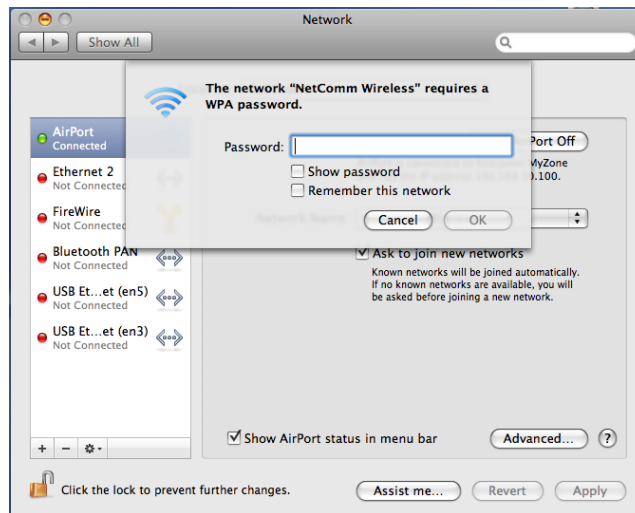
Under the 'Network' selection, click on the 'Airport' and click on 'Search Network Name' to see all the wireless networks available to you.



Make sure your NetComm m1 is turned on. You should see a wireless network called 'NetComm Wireless'

Click on network 'NetComm Wireless'

Enter the password which is "a1b2c3d4e5"

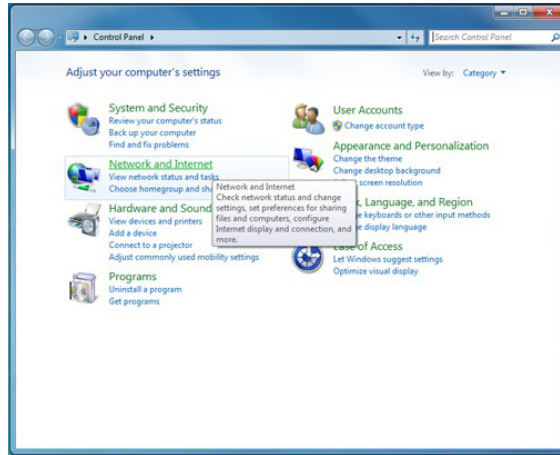


You are now connected to your NetComm m1. Open your browser and type in <http://192.168.1.1> to access your device

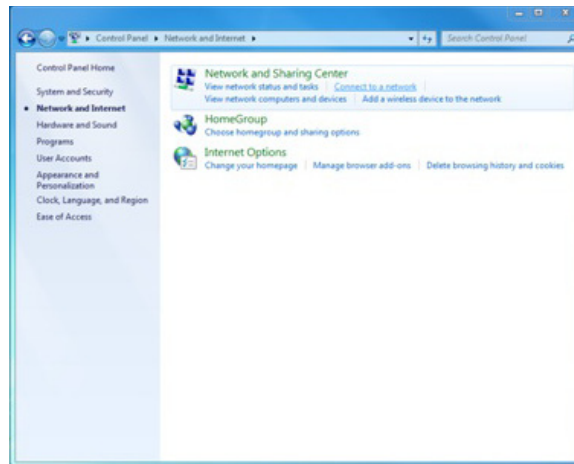
## Connecting to your NetComm m1 Wireless Network from a Windows PC

The following steps have been performed on a computer running the Windows 7 operating system. For other operating systems refer to the Appendix at the end of this document.

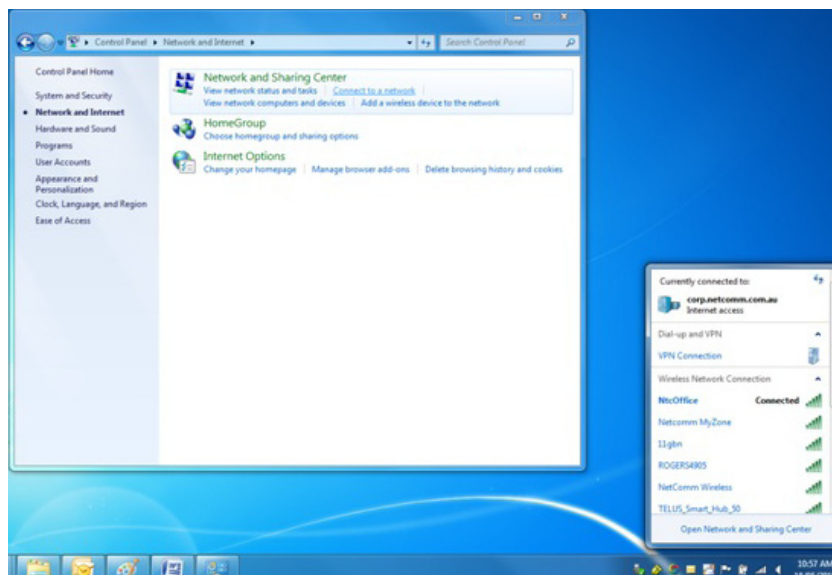
Go to the Control Panel on your computer.



Then click on the 'Network and Internet' icon from the Control Panel menu.

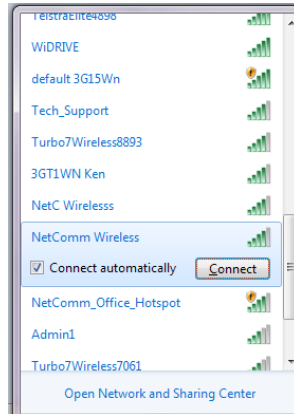


From the 'Network and Sharing Center' category, select the 'Connect to a network' option. You will see a selection of wireless networks pop-up at the bottom right hand side of your screen.



# NetComm Liberty Series - 3G Wireless N150 Mini Router m1

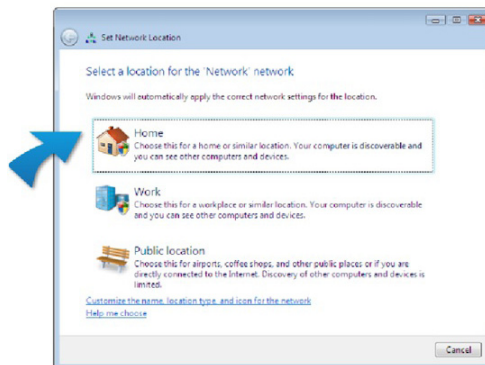
Search for a wireless network named 'NetComm Wireless' from the selection and click on it to connect.



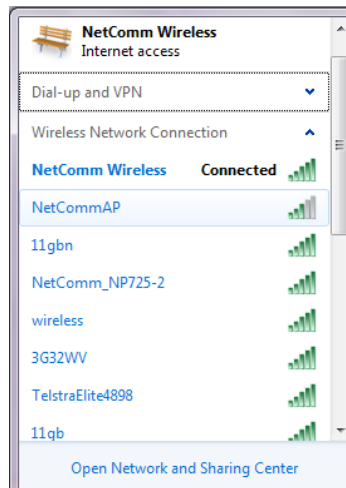
Click on the 'Connect' button. Your computer will then try to connect to the NetComm m1. You should then be prompted to enter the Security key. Enter the default security key which is "a1b2c3d4e5" and click on the 'OK' button.



If you see a screen pop-up that asks you to select your location, please choose the 'Home' option.



If you click on the network icon at the bottom right hand side of your screen, your wireless network should be listed with "Connected" next to it.



## Settings in the NetComm m1 Web Configuration Wizard

To access the NetComm m1 web based user configuration wizard open a web browser (Internet Explorer, Safari, Mozilla Firefox, Google Chrome, etc.) and type `http://192.168.1.1` in the address bar at the top of the screen and hit 'Enter'.

### Login:

Type "admin" (without the quotes) in the System Password field. Then click on Login.

Click on Wizard



This page shows you the steps needed to configure your NetComm m1. Click Next to continue.

After choosing 3G, you need to enter the information supplied by your 3G provider. Click Apply Settings once you have finished.

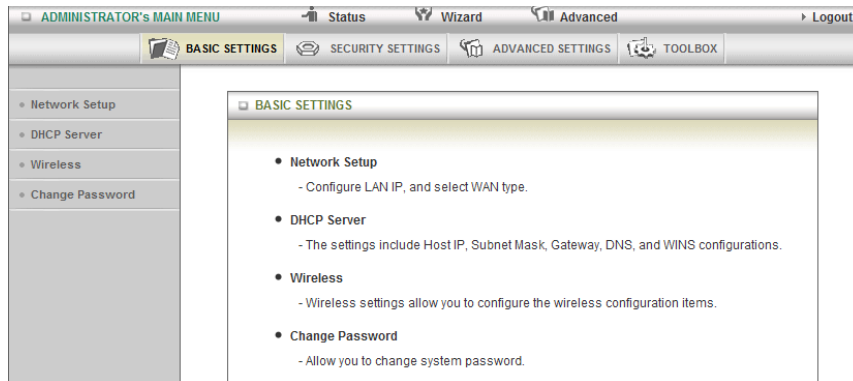
7. After several minutes the NetComm m1 will save all the settings and the wizard is complete. Click Finish to go back to the Status page. The router will now attempt to connect using the new settings.



## Basic Settings

## Basic Settings

The Basic Settings page allows you to configure a number of basic settings on the unit. This section deals with those features. Click on any of the menu items on the left to configure the associated settings.



## Basic Settings > Network Setup

This page allows you to change the LAN (Local Area Network) and WAN (Wide Area Network) connection settings on your NetComm m1.

LAN Setup	
Item	Setting
▶ LAN IP Address	<input type="text" value="192.168.1.1"/>
▶ Subnet Mask	<input type="text" value="255.255.255.0"/>
<div style="text-align: right;">[ HELP ]</div>	
Internet Setup	
▶ WAN Type	3G
▶ Choose your 3G Network	--Select one--
▶ APN	<input type="text"/> (optional)
▶ PIN Code	<input type="text"/> (optional)
▶ Dialed Number	<input type="text"/>
▶ Account	<input type="text"/> (optional)
▶ Password	<input type="text"/> (optional)
▶ Authentication	<input checked="" type="radio"/> Auto <input type="radio"/> PAP <input type="radio"/> CHAP
▶ Primary DNS	<input type="text"/> (optional)
▶ Secondary DNS	<input type="text"/> (optional)
▶ Connection Control	Auto Reconnect (always-on)
▶ Keep Alive	<input checked="" type="radio"/> Disable <input type="radio"/> LCP Echo Request ▶ Interval <input type="text" value="10"/> seconds ▶ Max Failure Time <input type="text" value="3"/> times <input type="radio"/> Ping Remote Host ▶ Host IP <input type="text"/> ▶ Interval <input type="text" value="60"/> seconds
<input type="button" value="Save"/> <input type="button" value="Undo"/>	
Saved! The change doesn't take effect until router is rebooted.	

### LAN Setup

- **LAN IP Address:** the local IP address of this device.
- **Subnet Netmask:** the subnet mask of the local IP address

### WAN Setup

WAN fields may not be necessary for your connection.

1. **WAN type 3G:** The information on this page will only be used when your service provider requires you to enter a User Name and Password to connect with the 3G network.
2. **3G Networks:** Please refer to your documentation or service provider for additional information.
3. **APN:** Enter the APN for your 3G connection here.(optional)
4. **PIN Code:** Enter the PIN Code for your SIM card (optional) account: Enter the username for your 3G connection here. (Please contact your 3G service provider to obtain this information.)
5. **Password:** Enter the Password for your 3G connection here. (Please contact your 3G service provider to obtain this information)
6. **Authentication:** Choose your authentication type.
7. **Primary DNS:** This feature allows you to assign a Primary DNS Server (Please contact your 3G service provider to obtain this information)
8. **Secondary DNS:** This feature allows you to assign a Secondary DNS Server. (Please contact your 3G service provider to obtain this information)
9. **Connection Control:** There are 3 modes to select:
  - **Connect-on-demand:** The device will connect with 3G service when the connected clients send outgoing packets.
  - **Auto Reconnect (Always-on):** The device will automatically reconnect with 3G service when the connection drops.
  - **Manually:** The device will not make connect to the 3G service unless someone clicks the Connect-button in the Status-page.
10. **Keep Alive:** This will prevent your 3G connection from timing out.

## WAN Type- WiFi Hotspot:

Internet Setup [HELP]

WAN Type: Wi-Fi HotSpot

Wi-Fi HotSpot Search

This WAN type allows you to share one WiFi hotspot account with your friends or colleagues. Local clients connect to this router via a WiFi connection, and surf the Internet by connecting to a remote WiFi hotspot. Follow the few steps below to connect to a remote WiFi hotspot.

Note. If choosing WiFi HotSpot WAN type, the wireless channel of the Wireless network will be set to the same channel as used on the remote WiFi HotSpot.

### Step 1:

Click "WiFi HotSpot Search" button to search for any available WiFi hotspots or WiFi APs (Access Points) nearby.

Internet Setup [HELP]

WAN Type: Wi-Fi HotSpot

Wi-Fi HotSpot Search

### Step 2:

After searching, a list of the all available WiFi APs around you will be shown. Select the appropriate Wireless network and click the "Select" button to start the connection or press "Refresh" button to search again.

Internet Setup [HELP]

WAN Type: Wi-Fi HotSpot

Wireless AP List

Select	SSID	BSSID	Channel	Mode	Security	Signal Strength
<input type="radio"/>	TelstraElite4898	00:1a:2b:66:ae:d8	1	B/G/N mixed	WPA2-PSK(AES)	96%
<input type="radio"/>	Netcomm MyZone	00:26:e8:57:cb:26	1	B/G Mixed	WPA-PSK(TKIP)	20%

Refresh Select Cancel

### Step 3:

If required, you can enter the Wireless security for the remote wireless network.

Click the "Save" button to save your selected settings.

Internet Setup [HELP]

WAN Type: Wi-Fi HotSpot

WISP Name(ESSID): 11gbn

Wireless Channel: 10

Security: WPA-PSK (TKIP)

Preshare Key: .....

Save Choose other Wi-Fi HotSpot

### Step 4:

Click the "Reboot" button to restart device so that the new settings take effect.

LAN Setup

Item	Setting
LAN IP Address	192.168.1.1
Subnet Mask	255.255.255.0

Internet Setup [HELP]

WAN Type: Wi-Fi HotSpot

WISP Name(ESSID): 11gbn

Wireless Channel: 10

Security: WPA-PSK (TKIP)

Preshare Key: .....

Save Choose other Wi-Fi HotSpot Reboot

Saved! The change doesn't take effect until router is rebooted.

# DHCP Server

# DHCP Server

DHCP Server [ HELP ]	
Item	Setting
▶ DHCP Server	<input type="radio"/> Disable <input checked="" type="radio"/> Enable
▶ IP Pool Starting Address	<input type="text" value="100"/>
▶ IP Pool Ending Address	<input type="text" value="200"/>
▶ Lease Time	<input type="text" value="86400"/> Seconds
▶ Domain Name	<input type="text"/>
<input type="button" value="Save"/> <input type="button" value="Undo"/> <input type="button" value="More..."/> <input type="button" value="Clients List..."/> <input type="button" value="Fixed Mapping..."/>	

1. DHCP Server: Enable or disable the DHCP server.
2. Lease Time: Length of the DHCP lease time
3. IP Pool Starting/Ending Address: Whenever there is a request, the DHCP server will automatically allocate an unused IP address from the IP address pool to the requesting computer. You must specify the starting / ending address of the IP address pool
4. Domain Name: Optional, this information will be passed to the DHCP client

Click "Save" to save these settings or Undo to cancel.

You can also check the DHCP client list by pressing the "Clients List" button.

The "Fixed Mapping" button allows you to map a specific IP address to a specific MAC address.

Press "More..." for more options.

## DHCP Clients List

The list of DHCP clients is shown here.

DHCP Clients List					
IP Address	Host Name	MAC Address	Type	Lease Time	Select
192.168.1.100	PDG18	00-02-6F-5F-3B-A2	Wireless	23:42:10	<input type="checkbox"/>
<input type="button" value="Delete"/> <input type="button" value="Back"/> <input type="button" value="Refresh"/> <input type="button" value="Fixed Mapping"/>					

## DHCP Fixed Mapping

The DHCP Server will reserve a specific IP for a specific MAC address, shown below.

Fixed Mapping [ HELP ]			
DHCP clients -- select one -- <input type="button" value="Copy to"/> ID -- <input type="text"/>			
ID	MAC Address	IP Address	Enable
1	<input type="text"/>	<input type="text"/>	<input type="checkbox"/>
2	<input type="text"/>	<input type="text"/>	<input type="checkbox"/>
3	<input type="text"/>	<input type="text"/>	<input type="checkbox"/>
4	<input type="text"/>	<input type="text"/>	<input type="checkbox"/>
5	<input type="text"/>	<input type="text"/>	<input type="checkbox"/>
6	<input type="text"/>	<input type="text"/>	<input type="checkbox"/>
7	<input type="text"/>	<input type="text"/>	<input type="checkbox"/>
8	<input type="text"/>	<input type="text"/>	<input type="checkbox"/>
9	<input type="text"/>	<input type="text"/>	<input type="checkbox"/>
10	<input type="text"/>	<input type="text"/>	<input type="checkbox"/>
<input type="button" value=" &lt;&lt;Previous"/> <input type="button" value=" Next&gt;&gt;"/> <input type="button" value=" Save"/> <input type="button" value=" Undo"/> <input type="button" value=" Back"/>			

**Wireless**

## Wireless

This page allows you to configure the wireless network features of the router.

Wireless Setting [HELP]	
Item	Setting
▶ Transmit Power	100% ▼
▶ Network ID(SSID)	NetComm Wireless
▶ SSID Broadcast	<input checked="" type="radio"/> Enable <input type="radio"/> Disable
▶ Channel	10 ▼
▶ Wireless Mode	B/G/N mixed ▼
▶ Authentication	WPA-PSK ▼
▶ Encryption	TKIP ▼
▶ Preshare Key	a1b2c3d4e5

Wireless settings allow you to set the wireless configuration items.

1. **Transmit Power:** The default is set to 100% for maximum range.
2. **Network ID (SSID):** Network ID is used for identifying the Wireless LAN (WLAN). Wireless Clients can roam freely over this product and other Access Points that have the same Network ID. (The factory setting is "NetComm Wireless")
3. **SSID Broadcast:** The router will broadcast the SSID so that wireless clients can find the wireless network.
4. **Channel:** The wireless radio channel in use by your network.
5. **Wireless Mode:** Choose B/G Mixed, B only, G only, and N only, G/N Mixed or B/G/N mixed. The factory default setting is B/G/N mixed.
6. **Authentication mode:** You may select from seven kinds of authentication to secure your wireless network: Open, Shared, Auto, WPA-PSK, WPA2-PSK, and WPA-PSK/WPA2-PSK.
  - a) WEP (Wired Equivalent Privacy). Enabling this security will protect your data while it is transferred from the computer to the NetComm m1 router. Select the WEP Encryption (64bit or 128bit) and enter the WEP key in Key 1 field. Please note that a WEP Encryption key can only use numbers from 0 to 9 and letters from A to F. 64 bit encryption needs a 10 digit key and 128 bit encryption needs a 26 digit key.

Wireless Setting [HELP]	
Item	Setting
▶ Transmit Power	100% ▼
▶ Network ID(SSID)	NetComm Wireless
▶ SSID Broadcast	<input checked="" type="radio"/> Enable <input type="radio"/> Disable
▶ Channel	10 ▼
▶ Wireless Mode	B/G/N mixed ▼
▶ Authentication	Auto ▼
▶ Encryption	WEP ▼
<input checked="" type="radio"/> WEP Key 1	HEX ▼ 1234567890
<input type="radio"/> WEP Key 2	HEX ▼ 1234567890
<input type="radio"/> WEP Key 3	HEX ▼ 1234567890
<input type="radio"/> WEP Key 4	HEX ▼ 1234567890



# NetComm Liberty Series - 3G Wireless N150 Mini Router m1

- b) **WPA-PSK/WPA2-PSK** : A newer type of security is WPA-PSK-TKIP and WPA-PSK2-AES. This type of security gives a more secure network compared to WEP. Use TKIP Encryption type for WPA-PSK and AES for WPA2-PSK. Please enter the key in the Passphrase field. The key needs to be more than 8 characters and less than 63 characters and it can be any combination of letters and numbers. Please note that the configuration for WPA-PSK and WPA2-PSK is identical.

Wireless Setting [HELP]	
Item	Setting
Transmit Power	100% ▾
Network ID(SSID)	NetComm Wireless
SSID Broadcast	<input checked="" type="radio"/> Enable <input type="radio"/> Disable
Channel	10 ▾
Wireless Mode	B/G/N mixed ▾
Authentication	WPA-PSK ▾
Encryption	AES ▾
Preshare Key	a1b2c3d4e5

Save Undo WPS Setup... Wireless Client List...

Notes: After configuring wireless security, you also need to configure your wireless adapter to use the same security settings before you can connect wirelessly. Not all wireless adapter support WPA-PSK/WPA2-PSK/WPA/WPA2 security, please refer to your wireless adapter user guide for more details.

It is strongly recommended to set up wireless security such as WEP 64bit or WPA (when the wireless client supports WPA) in order to secure your network.

Click "Save" to save these settings or click "Undo" to cancel.

## WPS (WiFi Protected Setup)

WPS (WiFi Protection Setup) offers a safe and easy way to connect wirelessly.

NETCOMM LIBERTY™ SERIES 3G Wireless N150 Mini Router m1																	
ADMINISTRATOR'S MAIN MENU																	
BASIC SETTINGS SECURITY SETTINGS ADVANCED SETTINGS TOOLBOX																	
<ul style="list-style-type: none"> <li>Network Setup</li> <li>DHCP Server</li> <li>Wireless</li> <li>Change Password</li> </ul>																	
<table border="1"> <thead> <tr> <th colspan="2">Wi-Fi Protected Setup</th> </tr> <tr> <th>Item</th> <th>Setting</th> </tr> </thead> <tbody> <tr> <td>WPS</td> <td><input checked="" type="radio"/> Enable <input type="radio"/> Disable</td> </tr> <tr> <td>AP PIN</td> <td>62831543 <input type="button" value="Generate New PIN"/></td> </tr> <tr> <td>Config Mode</td> <td>Registrar ▾</td> </tr> <tr> <td>Config Status</td> <td>CONFIGURED <input type="button" value="Release"/></td> </tr> <tr> <td>Config Method</td> <td>Push Button ▾</td> </tr> <tr> <td>WPS status</td> <td>Not Used</td> </tr> </tbody> </table>		Wi-Fi Protected Setup		Item	Setting	WPS	<input checked="" type="radio"/> Enable <input type="radio"/> Disable	AP PIN	62831543 <input type="button" value="Generate New PIN"/>	Config Mode	Registrar ▾	Config Status	CONFIGURED <input type="button" value="Release"/>	Config Method	Push Button ▾	WPS status	Not Used
Wi-Fi Protected Setup																	
Item	Setting																
WPS	<input checked="" type="radio"/> Enable <input type="radio"/> Disable																
AP PIN	62831543 <input type="button" value="Generate New PIN"/>																
Config Mode	Registrar ▾																
Config Status	CONFIGURED <input type="button" value="Release"/>																
Config Method	Push Button ▾																
WPS status	Not Used																

Save Trigger Cancel

## Wireless Client List

The list of wireless clients is shown here.

Wireless Clients List	
ID	MAC Address
1	00-02-6F-5F-3B-A2

Back Refresh

## Basic Settings > Change Password

On this page you can change the NetComm m1 web based user configuration password. Please type in your old password (The factory default password is "admin") and then type in the new password. Type the same new password in the Reconfirm field.

Change Password	
Item	Setting
▶ Old Password	<input type="text"/>
▶ New Password	<input type="text"/>
▶ Reconfirm	<input type="text"/>

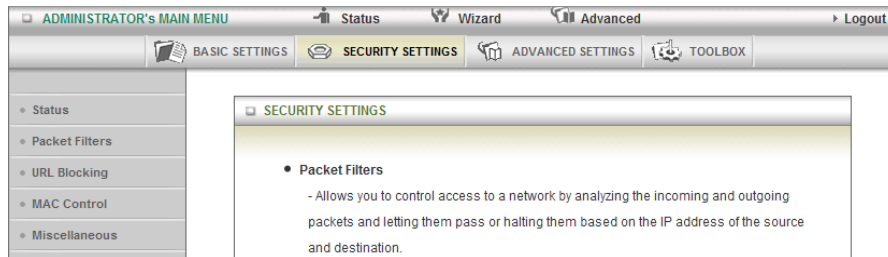
Note: if you change the password, please make sure that you use the new password the next time you log into the web based user configuration.

Click "Save" to save the settings or "Undo" to cancel.

# Security Settings

## Security Settings

The Security Setting page allows you to configure the security management features on the router such as Packet filters and MAC Control. Click on any of the menu items on the left to access the associated settings.



### Security Settings > Packet Filters

The Packet Filter enables you to control what packets are allowed to pass through the router. There are two types of packet filter, the "Outbound Packet Filter" which applies to all outbound packets and the "Inbound Packet Filter" which only applies to packets that are destined for a Virtual Server or DMZ host only.

Outbound Packet Filter [ HELP ]			
Item	Setting		
▶ Outbound Packet Filter	<input type="checkbox"/> Enable		
<input checked="" type="radio"/> Allow all data through the router except data that matches the specified rules. <input type="radio"/> Deny all data through the router except data that matches the specified rules.			
ID	Source IP	Destination IP : Ports	Enable
1	<input type="text"/>	<input type="text"/> : <input type="text"/>	<input type="checkbox"/>
2	<input type="text"/>	<input type="text"/> : <input type="text"/>	<input type="checkbox"/>
3	<input type="text"/>	<input type="text"/> : <input type="text"/>	<input type="checkbox"/>
4	<input type="text"/>	<input type="text"/> : <input type="text"/>	<input type="checkbox"/>
5	<input type="text"/>	<input type="text"/> : <input type="text"/>	<input type="checkbox"/>
6	<input type="text"/>	<input type="text"/> : <input type="text"/>	<input type="checkbox"/>
7	<input type="text"/>	<input type="text"/> : <input type="text"/>	<input type="checkbox"/>
8	<input type="text"/>	<input type="text"/> : <input type="text"/>	<input type="checkbox"/>
<input type="button" value="Save"/> <input type="button" value="Undo"/> <input type="button" value="MAC Level"/>			

To enable an Outbound Filter, please make sure to tick the Enable tick box on the top of the page. There are two type of filtering policies:

1. Allow all data through the router except data that matches the specified rules.
2. Deny all data through the router except data that matches the specified rules.

For each direction, you can specify up to 48 rules. For each rule you will need to define the following:

- Source IP address
- Source port
- Destination IP address
- Destination port
- Protocol: TCP or UDP or both.
- Use Schedule Rule#

For source or destination IP address, you can define a single IP address (192.168.1.1) or a range of IP addresses (192.168.1.100-192.168.1.200). Empty fields imply all IP addresses.

For source or destination port, you can also define a single port (80) or a range of ports (1000-1999). Use the prefix “T” or “U” to specify either the TCP or UDP protocol e.g. T80, U53, U2000-2999. No prefix indicates both

TCP and UDP are defined. An empty field implies all ports.

The Packet Filter also works with Scheduling Rules, and gives you more flexibility on Access control. For detailed instructions regarding scheduling rules, please refer to the Advanced Setting > Scheduling section.

Click “Save” to save the settings or “Undo” to cancel.

## Security Settings > URL Blocking

URL Blocking will block LAN computers from connecting to a pre-defined website. The major difference between

the Domain Filter and URL Blocking is that the Domain Filter requires users to input a suffix (e.g. xxx.com, yyy.net) while URL Blocking only requires you to input a keyword.

URL Blocking [ HELP ]		
Item	Setting	
▶ URL Blocking	<input type="checkbox"/> Enable	
ID	URL	Enable
1	<input type="text"/>	<input type="checkbox"/>
2	<input type="text"/>	<input type="checkbox"/>
3	<input type="text"/>	<input type="checkbox"/>
4	<input type="text"/>	<input type="checkbox"/>
5	<input type="text"/>	<input type="checkbox"/>
6	<input type="text"/>	<input type="checkbox"/>
7	<input type="text"/>	<input type="checkbox"/>
8	<input type="text"/>	<input type="checkbox"/>
9	<input type="text"/>	<input type="checkbox"/>
10	<input type="text"/>	<input type="checkbox"/>
<input type="button" value="Save"/> <input type="button" value="Undo"/>		

To enable URL Blocking please make sure to tick the Enable box on the top of the page. To set a URL Blocking rule, you need to specify the following:

- URL. If any part of the Website’s URL matches the pre-defined word then the connection will be blocked. For example, you can use the pre-defined word “sex” to block all websites with this in their URLs.
- Enable. Tick to enable the filtering rule.

Click “Save” to save the settings or “Undo” to cancel.

## Security Settings > MAC Control

MAC Control allows you to assign different access rights for different users and to assign a specific IP address to a specific MAC address.

MAC Address Control [HELP]			
Item	Setting		
▶ MAC Address Control	<input type="checkbox"/> Enable		
<input type="checkbox"/> Connection control	Wireless and wired clients with C checked can connect to this device; and allow ▾ unspecified MAC addresses to connect.		
<input type="checkbox"/> Association control	Wireless clients with A checked can associate to the wireless LAN; and allow ▾ unspecified MAC addresses to associate.		
DHCP clients -- select one -- <input type="button" value="Copy to"/> ID -- ▾			
ID	MAC Address	C	A
1	<input type="text"/>	<input type="checkbox"/>	<input type="checkbox"/>
2	<input type="text"/>	<input type="checkbox"/>	<input type="checkbox"/>
3	<input type="text"/>	<input type="checkbox"/>	<input type="checkbox"/>
4	<input type="text"/>	<input type="checkbox"/>	<input type="checkbox"/>
5	<input type="text"/>	<input type="checkbox"/>	<input type="checkbox"/>
<input type="button" value="Previous"/> <input type="button" value="Next"/> <input type="button" value="Save"/> <input type="button" value="Undo"/>			

To enable MAC Address Control please tick the Enable box on the top of the page. Two types of control are available:

- Connection control. Tick the “Connection Control” box to control which clients (wired and wireless) can connect to the unit. If a client is not able to connect to this device, it means the client can not access to the Internet either. Choose allow or deny to allow or deny clients with MAC addresses that are not in the list to connect to this device.
- Association control. Tick the “Association Control” to control which wireless client can associate with the unit.

If a client is not able to associate with the unit, it means the client can not send or receive any data via the router. Choose allow or deny to allow or deny the clients with MAC addresses that are not in the list to associate to the wireless LAN

Click the “Next Page” or the “Previous Page” buttons to see the entire list.

Click “Save” to save the settings or “Undo” to cancel.

## Security Settings > Miscellaneous

This page allows you to change various miscellaneous security settings on the unit.

Miscellaneous Items		[HELP]
Item	Setting	Enable
▶ Administrator Time-out	300 seconds (0 to disable)	
▶ Remote Administration	<input type="text"/> / <input type="text"/> : <input type="text"/>	<input type="checkbox"/>
▶ Discard PING from WAN side		<input type="checkbox"/>
▶ DoS Attack Detection		<input type="checkbox"/>

### Administrator Time-out

The period of time with no activity in the web based user configuration page to logout automatically, you may set it to zero to disable this feature.

### Remote Administrator Host/Port

In general, only Intranet users can browse the built-in web pages to perform administration tasks. This feature enables you to perform administration tasks from a remote host. If this feature is enabled, only the specified IP address can perform remote administration. If the specified IP address is 0.0.0.0, any host can connect to the router to perform administration tasks. You can use subnet mask bit (/nn) notation to specify a group of trusted IP addresses for example, "10.1.2.0/24".

NOTE: When Remote Administration is enabled, the web server port will be shifted to 80. You can also change the web server port.

### Discard PING from WAN side

When this feature is enabled, your router will not respond to ping requests from remote hosts.

### DoS Attack Detection

When this feature is enabled, the router will detect and log where the DoS attack comes from on the Internet. Currently, the router can detect the following DoS attack types: SYN Attack, WinNuke, Port Scan, Ping of Death and Land Attack, as well as others.

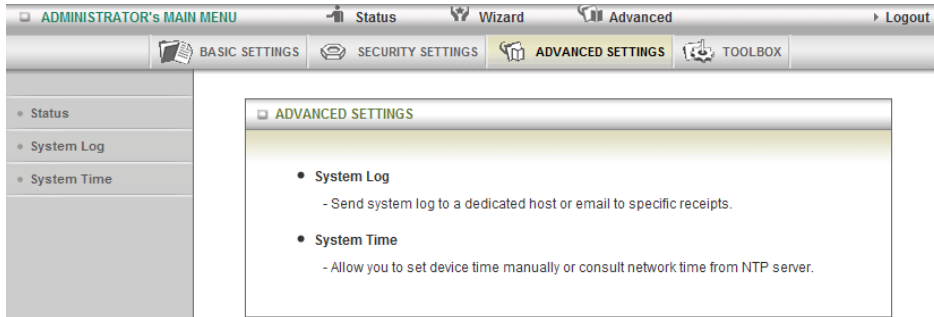
Click "Save" to save the settings or "Undo" to cancel.

## Advanced Settings



# Advanced Settings

The Advanced Settings page allows you to configure the advanced settings on the router such as the System log and System time . Click on any of the menu items on the left to configure the associated settings.



## Advanced Settings > System Log

This enables you to set up the system log feature of the router. You can also choose to export the system log via email (SMTP) or send it to a remote syslog server (UDP).

System Log		[ HELP ]
Item	Setting	Enable
▶ IP address for syslogd server	<input type="text"/>	<input type="checkbox"/>
▶ Email address to send syslog to		<input type="checkbox"/>
• SMTP Server : port	<input type="text"/> : <input type="text"/>	
• SMTP Username	<input type="text"/>	
• SMTP Password	<input type="text"/>	
• E-mail addresses	<input type="text"/>	
• E-mail subject	<input type="text"/>	
<input type="button" value="Save"/> <input type="button" value="Undo"/> <input type="button" value="View Log..."/> <input type="button" value="Email Log Now"/>		

### IP address for Syslogd server

The IP address of the syslog server where the syslog information will be sent to. Click the “Enable” checkbox to enable this function.

### Setting of Email alert

Check if you want to enable Email alerts (send syslog via email). Click the “Enable” checkbox to enable this function.

### SMTP Server IP and Port

Enter the SMTP server IP (or FQDN) and port, separated by a ‘:’. If you do not specify port number, the default value is 25. For example, “mail.your\_url.com” or “192.168.1.100:26”.

### SMTP username and password

Enter the user account and password for the SMTP server.

### E-mail address

The recipients who will receive these logs, you can assign more than 1 recipient, using ‘;’ or ‘,’ to separate the email addresses.

### E-mail Subject

The subject of email alert, this setting is optional.

### View Log...

View the current system log.

## Advanced Settings > System Time

This page allows you to change the System time setting on the NetComm m1.

System Time [HELP]	
Item	Setting
▶ Time Zone	(GMT+10:00) Canberra, Melbourne, Sydney
▶ Auto-Synchronization	<input checked="" type="checkbox"/> Enable Time Server (RFC-868): Auto

Sync Result

### Time Zone

Select the time zone where this device is located.

### Auto-Synchronization

Click the "Enable" checkbox to enable this function.

### Time Server

Select a NTP time server to obtain the current UTC time from

### Sync with Time Server

Select if you want to set the Date and Time by NTP Protocol.

### Sync with my PC

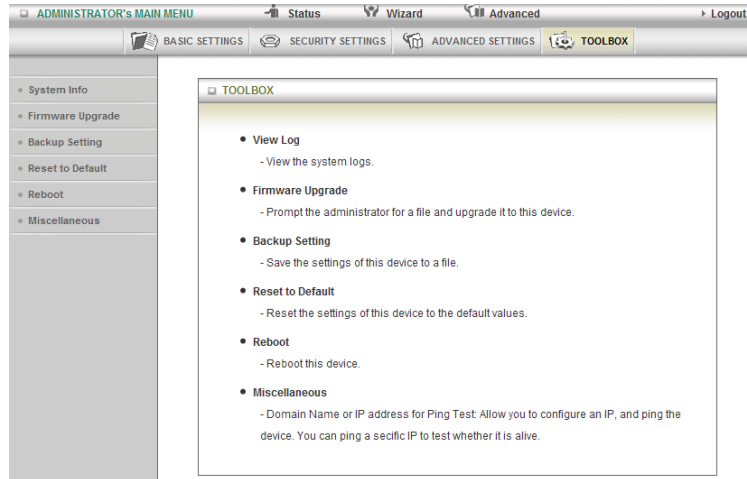
Select if you want to set the Date and Time using your computers current Date and Time

Click "Save" to save the settings or "Undo" to cancel.

## Tool Box

## Tool Box

The Tool Box page consists of various tools for the unit. Click on any of the menu items on the left to access the associated page.



### Tool Box > System Info

From this page you can view the system log and the routing table information for the router.

System Information	
Item	Setting
▶ WAN Type	Wi-Fi HotSpot
▶ Display time	Mon, 23 Aug 2010 12:30:30 +1000
System Log	
Time	Log
Aug 23 12:02:23	kernel: klogd started: BusyBox v1.3.2 (2010-07-22 11:57:27 CST)
Aug 23 12:02:28	O3G/hotplug: 3G modem VendorID=12d1 ProductID=140c
Aug 23 12:02:29	commander: Write AP PinCode into CSID_S_WLANAP_WPS_AP_PINCODE
Aug 23 12:02:32	O3G/hotplug: link device node (/dev/ttyXX000) to /dev/modem
Aug 23 12:02:32	udhcpd[1512]: udhcpd (v0.9.9-pre) started
Aug 23 12:02:32	udhcpd[1512]: Unable to open /var/run/udhcpd.leases for reading
Aug 23 12:02:33	init: Starting pid 1556, console /dev/ttyS1: '/bin/ash'

### Tool Box > Firmware Upgrade

You can upgrade the router firmware by clicking the "Upgrade" button

**Firmware Upgrade**

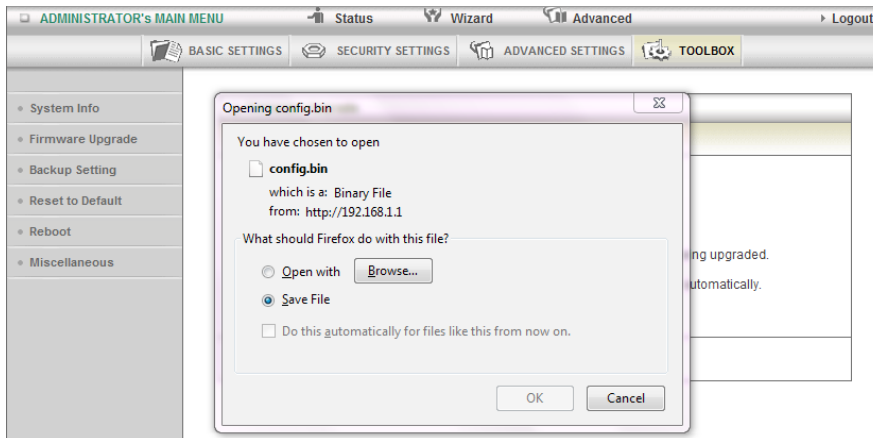
**Firmware Filename**

Current firmware version is **V2.00b0\_0804**.

Note! Do not interrupt the process or power off the unit when it is being upgraded.  
When the process is done successfully, the unit will be restarted automatically.

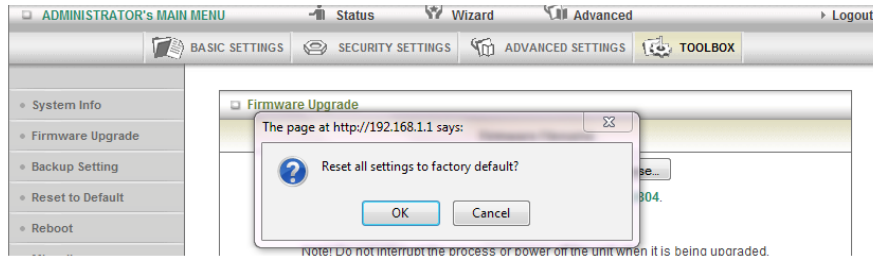
**Accept unofficial firmware.**

## Tool Box > Backup Setting

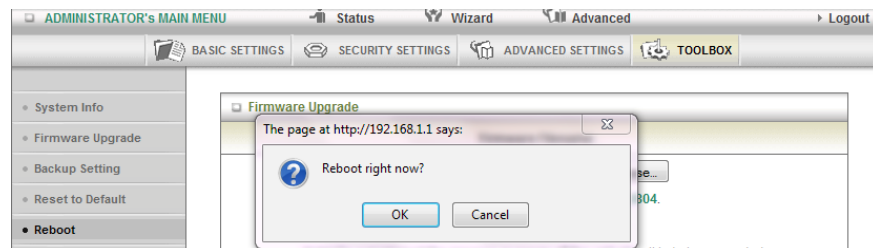


You can backup your current settings by clicking the “Backup Setting” button then and save it as a bin file. When you want to restore these settings, click the “Firmware Upgrade” button and use the bin file you saved.

## Tool Box > Reset to Default



## Tool Box > Reboot



# Troubleshooting

# Troubleshooting

## Are you having trouble connecting wirelessly?

1. Make sure that the WiFi device you are using to connect to the NetComm m1 is turned ON. For example, most laptops have a manual WiFi ON/OFF button that is typically located to the front or the side of the laptop, depending on the brand. Please contact your laptop or wireless device manufacturer for more information regarding this.
2. Ensure that the NetComm m1 is turned ON and has the Blue WiFi LED on.
3. Search for Wireless Network 'NetComm Wireless and make sure you enter the right wireless security key which is 'a1b2c3d4e5.'
4. Make sure DHCP is turned ON correctly for your WiFi device.

## Are you having trouble accessing the Internet?

1. Make sure your 3G modem is compatible with the NetComm m1, please check the compatibility list on the NetComm website.
2. If you are using a Prepaid SIM, make sure that there is sufficient credit on your SIM.
3. If you are using a SIM from a service provider in Australia, please ensure you enter the correct APN. If you don't know the APN, please contact your mobile service provider or check the selection of APN's listed at [www.netcomm.com.au/](http://www.netcomm.com.au/)

## Legal and Regulatory Information



# Legal & Regulatory Information

This manual is copyright. Apart from any fair dealing for the purposes of private study, research, criticism or review, as permitted under the Copyright Act, no part may be reproduced, stored in a retrieval system or transmitted in any form, by any means, be it electronic, mechanical, recording or otherwise, without the prior written permission of NetComm Limited. NetComm Limited accepts no liability or responsibility, for consequences arising from the use of this product.

NetComm Limited reserves the right to change the specifications and operating details of this product without notice.

NetComm is a registered trademark of NetComm Limited.

All other trademarks are acknowledged the property of their respective owners.

## Customer Information

ACA (Australian Communications Authority) requires you to be aware of the following information and warnings:

- (1) This unit shall be connected to the Telecommunication Network through a line cord which meets the requirements of the ACA TS008 Standard.
- (2) This equipment has been tested and found to comply with the Standards for C-Tick and or A-Tick as set by the ACA . These standards are designed to provide reasonable protection against harmful interference in a residential installation. This equipment generates, uses, and can radiate radio noise and, if not installed and used in accordance with the instructions detailed within this manual, may cause interference to radio communications. However, there is no guarantee that interference will not occur with the installation of this product in your home or office. If this equipment does cause some degree of interference to radio or television reception, which can be determined by turning the equipment off and on, we encourage the user to try to correct the interference by one or more of the following measures:
  - Change the direction or relocate the receiving antenna.
  - Increase the separation between this equipment and the receiver.
  - Connect the equipment to an alternate power outlet on a different power circuit from that to which the receiver/TV is connected.
  - Consult an experienced radio/TV technician for help.
- (3) The power supply that is provided with this unit is only intended for use with this product. Do not use this power supply with any other product or do not use any other power supply that is not approved for use with this product by NetComm. Failure to do so may cause damage to this product, fire or result in personal injury.

## Product Warranty

The warranty is granted on the following conditions:

1. This warranty extends to the original purchaser (you) and is not transferable;
2. This warranty shall not apply to software programs, batteries, power supplies, cables or other accessories supplied in or with the product;
3. The customer complies with all of the terms of any relevant agreement with NetComm and any other reasonable requirements of NetComm including producing such evidence of purchase as NetComm may require;
4. The cost of transporting product to and from NetComm's nominated premises is your responsibility; and,
5. NetComm does not have any liability or responsibility under this warranty where any cost, loss, injury or damage of any kind, whether direct, indirect, consequential, incidental or otherwise arises out of events beyond NetComm's reasonable control. This includes but is not limited to: acts of God, war, riot, embargoes, acts of civil or military authorities, fire, floods, electricity outages, lightning, power surges, or shortages of materials or labour.
6. The customer is responsible for the security of their computer and network at all times. Security features may be disabled within the factory default settings. NetComm recommends that you enable these features to enhance your security.

### GNU General Public License

This product includes software code that is subject to the GNU General Public License ("GPL") or GNU Lesser General Public License ("LGPL"). This code is subject to the copyrights of one or more authors and is distributed without any warranty. A copy of this software can be obtained by contacting NetComm Limited on +61 2 9424 2059.

### The warranty is automatically voided if:

1. You, or someone else, use the product, or attempts to use it, other than as specified by NetComm;
2. The fault or defect in your product is the result of a voltage surge subjected to the product either by the way of power supply or communication line, whether caused by thunderstorm activity or any other cause(s);
3. The fault is the result of accidental damage or damage in transit, including but not limited to liquid spillage;
4. Your product has been used for any purposes other than that for which it is sold, or in any way other than in strict accordance with the user manual supplied;
5. Your product has been repaired or modified or attempted to be repaired or modified, other than by a qualified person at a service centre authorised by NetComm; and,
6. The serial number has been defaced or altered in any way or if the serial number plate has been removed.

## Limitations of Warranty

The Trade Practices Act 1974 and corresponding State and Territory Fair Trading Acts or legalisation of another Government ("the relevant acts") in certain circumstances imply mandatory conditions and warranties which cannot be excluded. This warranty is in addition to and not in replacement for such conditions and warranties.

To the extent permitted by the Relevant Acts, in relation to your product and any other materials provided with the product ("the Goods") the liability of NetComm under the Relevant Acts is limited at the option of NetComm to:

- Replacement of the Goods; or
- Repair of the Goods; or
- Payment of the cost of replacing the Goods; or
- Payment of the cost of having the Goods repaired.

All NetComm ACN 002 490 486 products have a standard 12 months warranty from date of purchase. However some products have an extended warranty option (refer to packaging). To be eligible for the extended warranty you must supply the requested warranty information to NetComm within 30 days of the original purchase by registering on-line via the NetComm web site at

[www.netcomm.com.au](http://www.netcomm.com.au)

# NetComm

# Dynalink

**NETCOMM LIMITED** Head Office  
PO Box 1200, Lane Cove NSW 2066 Australia  
**P:** 02 9424 2070 **F:** 02 9424 2010  
**E:** [int.sales@netcomm.com.au](mailto:int.sales@netcomm.com.au)  
**W:** [www.netcommlimited.com](http://www.netcommlimited.com)

**DYNALINK NZ** 12c Tea Kea Place, Albany, Auckland,  
New Zealand  
**P:** 09 448 5548  
**F:** 09 448 5549  
**E:** [sales@dynalink.co.nz](mailto:sales@dynalink.co.nz)  
**W:** [www.dynalink.co.nz](http://www.dynalink.co.nz)

## Product Warranty

NetComm products have a standard 12 months warranty from date of purchase. However some products have an extended warranty option, via registering your product online at the NetComm website [www.netcomm.com.au](http://www.netcomm.com.au).

## Technical Support

If you have any technical difficulties with your product, please refer to the support section of our website.

[www.netcomm.com.au/support](http://www.netcomm.com.au/support)

Note: NetComm Technical Support for this product only covers the basic installation and features outlined in the Quick Start Guide. For further information regarding the advanced features of this product, please refer to the configuring sections in the User Guide or contact a Network Specialist.