



ALL0239-3G

3G Mobile Broadband plus 4-Port Wireless-N Router

User Manual

Table of Contents

About the Product	3
Features.....	4
Requirements	5
Package Content	6
Device Design.....	7
Getting Started.....	10
Plan Your Network.....	11
Remove or Disable Conflicts	12
Installing your Router.....	13
Connecting to the Internet	14
WPS (Wi-Fi Protected Setup)	19
Connect/Disconnect Button	19
About the Web User Interface	20
Basic Mode	21
Home	21
Storage	21
Printer	22
Wizard.....	32
Quick Setup.....	35
Advanced Page.....	36
Network.....	36
Local	36
Internet	37
Wireless	38
Settings.....	38
Security.....	39
Applications	39
Port forwarding	40
Filtering.....	40
DDNS (Dynamic DNS).....	41
System	41
System Information	41
Settings.....	42
Firmware Upgrade	42
Reboot	43
Password.....	44
Regulatory Compliance Notices	45

About the Product

- ALLNET ALL0239-3G is an IEEE802.11n wireless broadband Router with HSDPA\HSUPA 3.5G support. With a 3G HSDPA USB modem simply plug in the Router, an Internet connection can be accessed and shared virtually anytime anywhere within a wireless broadband network.

- 4-Port Wireless-N Broadband Router to Share Wireless Internet Connection with more users. ALL0239-3G also integrates router function so that Internet can be accessed through WIFI connection simultaneously. ALL0239-3G 4-port wireless-N router function provides an excellent solution for sharing a wireless Internet connection and files such as High Definition (HD) video, music, photos and documents with the wireless speed up to 300Mbps.

- Advanced Wireless Security
ALLNET ALL0239-3G creates a secure Wi-Fi® network by supporting the latest wireless security features to prevent unauthorized access. It supports for 64/128-bit WEP, WPA, and WPA2 to ensure that you will be able to secure your Wi-Fi network, regardless of your client devices. In addition, the 3G Mobile Router utilizes dual active firewalls (SPI and NAT) to prevent potential attacks from across the Internet.

- Wide Wireless Coverage
The product integrates 2x2 (2 transmit and 2 receive) antennas. This MIMO technology overlay the signals of multiple radios, which successfully reduce “dead sports”, increase throughput and increase wireless coverage range.

- Easy to install and Use
By connecting a HSDPA USB modem into USB port of ALL0239-3G, Internet access can be accessed and shared virtually anywhere within a wire or wireless broadband network. You can also directly connect Ethernet-based devices to its built-in 4-port full-duplex 10/100 switch.

Features

- 2-in-1 dual function Router - HSPA support for 3G mobile broadband plus 4-port wireless N router
- Support HSDPA/HSUPA (3.5G) USB modem connection - to offer a network connection with full mobility
- Converts single user 3G USB modem into a multiple users ready WiFi Router - to share the mobile Internet connection with your family, friends and colleagues
- Support IEEE802.11b/g and 11n (draft 2.0) wireless standard - data transfer rate reaches up to 300Mbps
- Support WAN Port and 4-Port 10/100M Ethernet - dual way connections to DSL/Cable modem for Internet access
- Support for 64/128-bit WEP, WPA, and WPA2 - ensure secure WiFi network, and prevent unauthorized access
- Support WiFi Protected Setup - reduce by half the user steps to configure a network
- Adopt 2x2 MIMO technology - increase throughput and increase wireless coverage range
- Detachable Antennas - allows flexible gain performance antennas.

Requirements

Your computer must meet the following minimum requirements.

- Internet Explorer 7 or Mozilla 3.0.5
- CD-ROM Drive
- Ethernet network adapter

Package Content

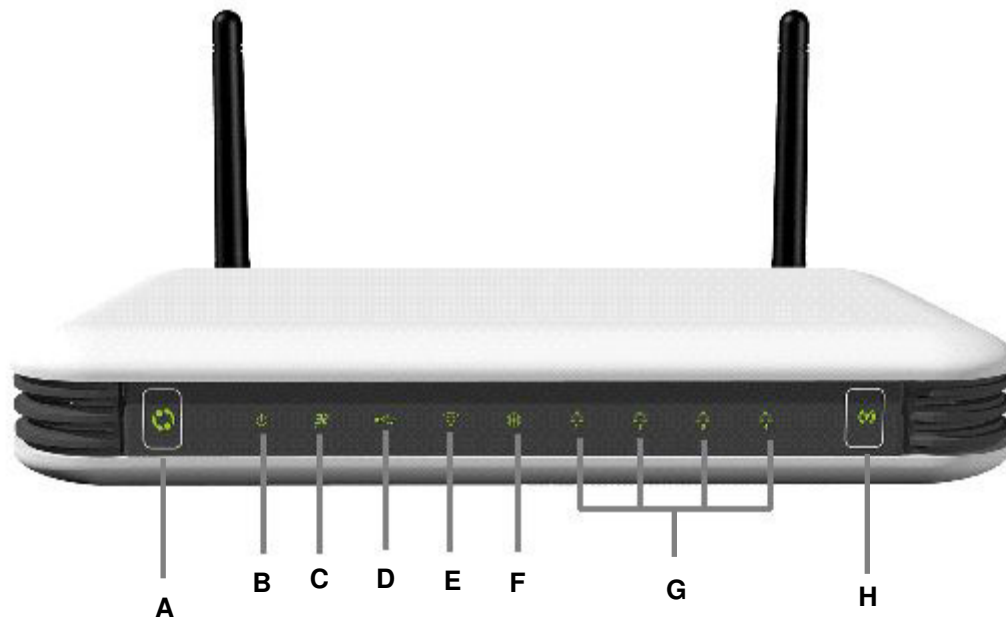
The package should contain the following items:

- ALL0239-3G
- CD Content
- 12.0V, 1A Power Adapter (Model SWM11-12120)
- Easy Start Guide

If any of the items is missing please contact the dealer from whom the equipment was purchased.

Device Design

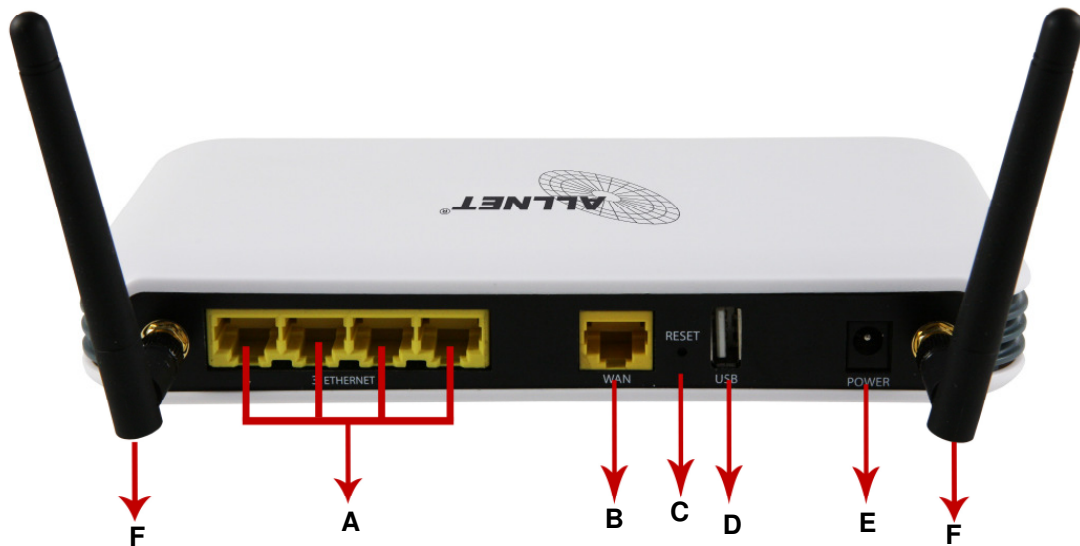
Front Panel



	LED	Behavior	Description
A	UMTS 3.5G Connect/Disconnect Button		Easy Connect and Disconnect to your 3.5G broadband.
B	Power	Off	No power is supplied to the device.
		Steady Light	Connected to an AC power source.
C	3G	On	UMTS (3.5G) Internet connection is active
		Off	UMTS (3.5G) Internet connection is off
D	USB	On	Active USB device is connected to the router
		Off	No active USB device connected to the router
E	Wi-Fi	On	Wireless is enabled
		Off	Wireless is disabled
		Blinking	Transmitting/Receiving data wirelessly

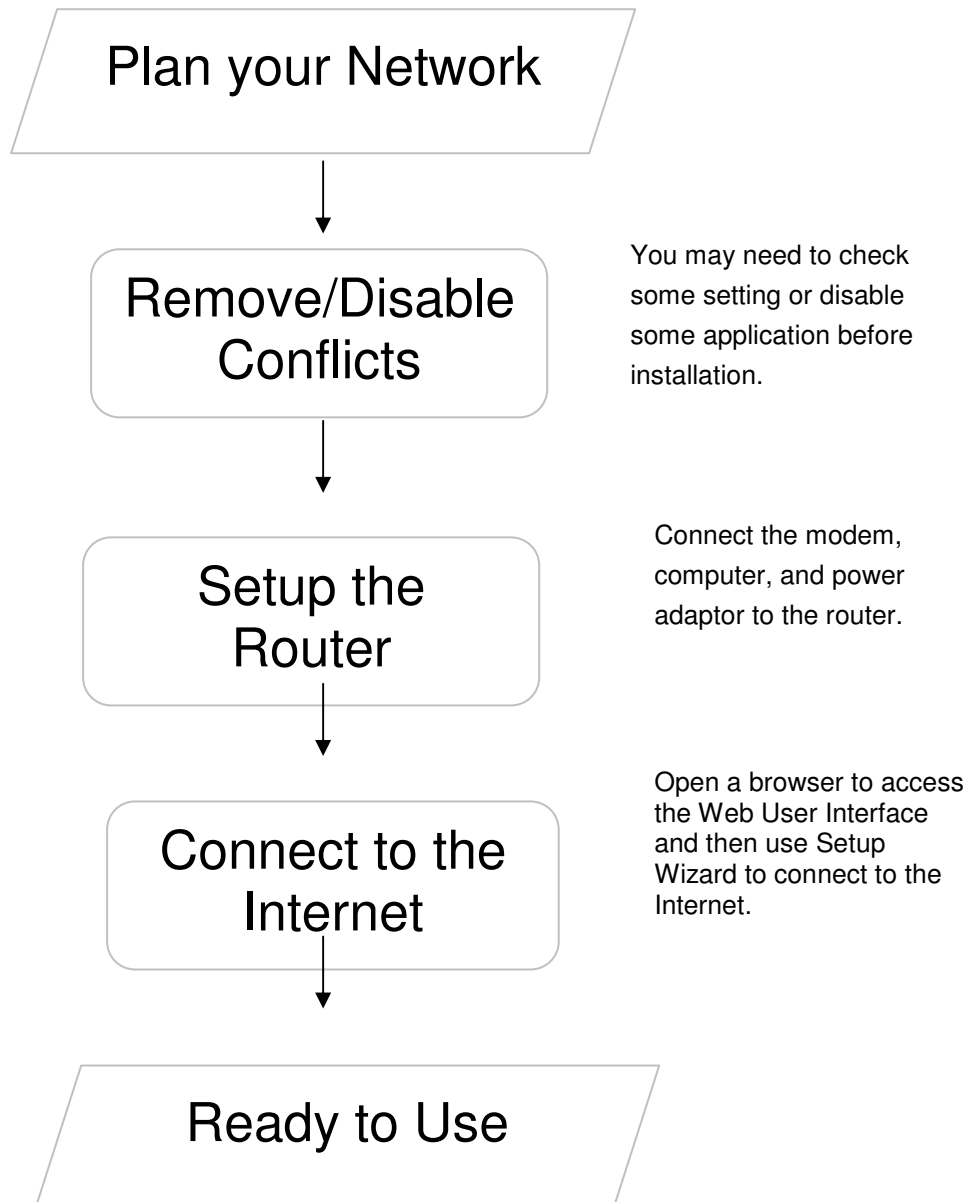
F	WAN	On	Connected to a Modem
		Off	No Modem connection
G	Ethernet 1-4	On	Connected to an Active Ethernet Device
		Off	No Ethernet Connection
		Blinking	Transmitting/Receiving Data
H	WPS		Press for two seconds (or until the LED blinks) to start WPS pairing. Wireless client must be WPS-enabled and must be pressed within 2 minutes.

Back Panel



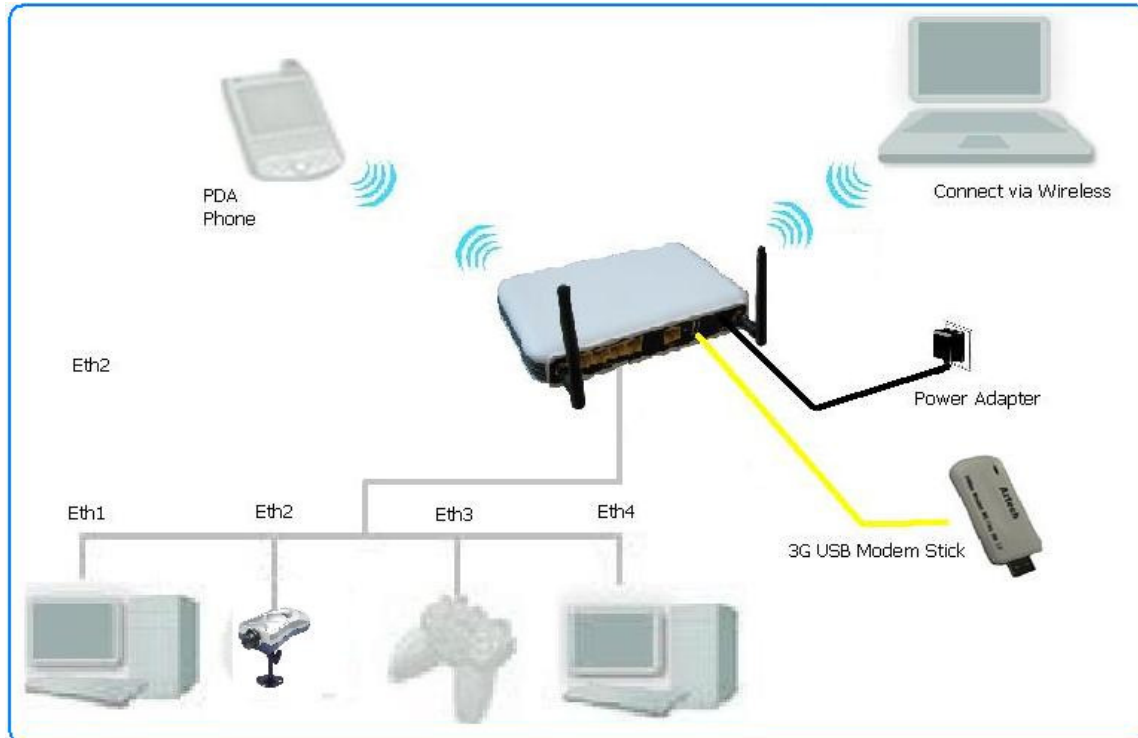
	Label	Description
A	Ethernet Port 1-4	Connecting with computers/devices using an Ethernet cable
B	WAN	Connect to a modem using an Ethernet cable
C	Reset	Press for 3 seconds to reset to the Factory Default.
D	USB Port	Connect to a 3G USB modem stick, USB storage, printer and alike.
E	Power Jack	Use 12V 1.0A Power Adapter
F	Antenna 1 and 2	Sending/Receiving wireless signals

Getting Started

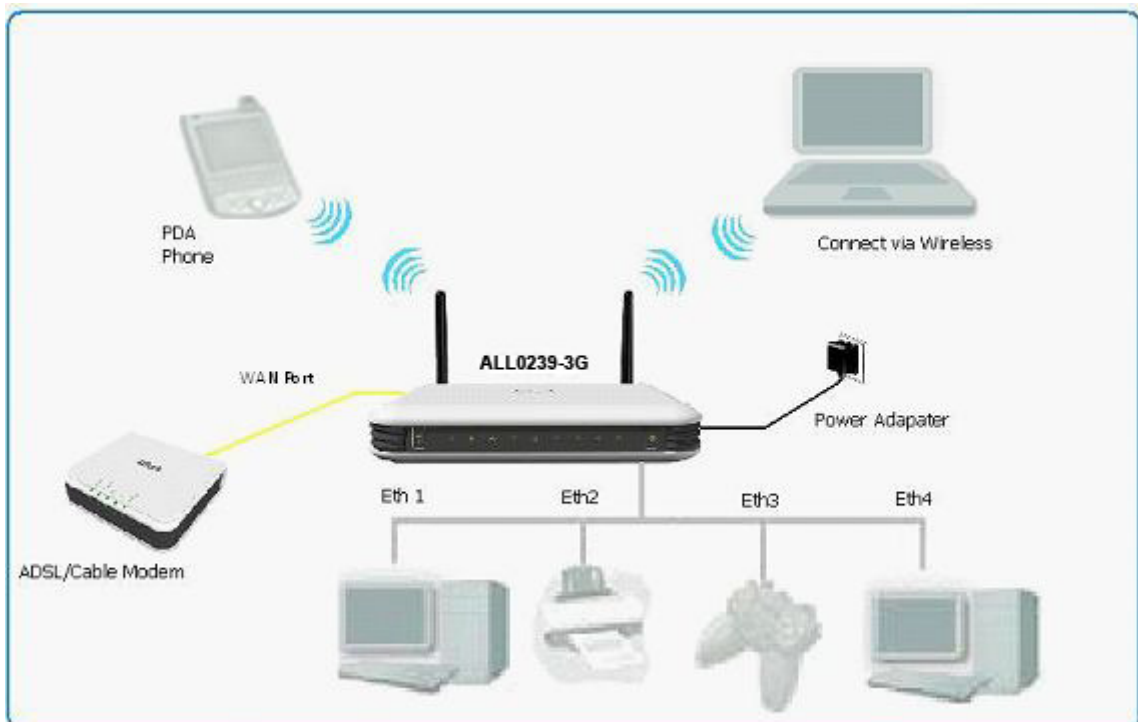


Plan Your Network

1. Using a 3G USB Modem Stick



2. Using a DSL/Cable modem



Remove or Disable Conflicts

To make sure the router installation moves on smoothly, you need to remove or disable conflicts that may interfere the installation. Probable conflicts may include:

- Internet sharing applications
- Proxy software
- Security software
- TCP/IP settings
- Internet properties
- Temporary Internet files

Internet Sharing, Proxy, and Security Applications

Internet sharing, proxy software, and firewall applications may interfere with the router installation. These should be removed or disabled before start the installation.

If you have any of the following or similar applications installed on your computer, remove or disable them according to the manufacturer's instructions.

Internet Sharing Applications	Proxy Software	Security Software
Microsoft Internet Sharing	WinGate	Symantec
	WinProxy	Zone Alarm

Configuring the TCP/IP Settings

Check if your computer uses default TCP/IP Settings

To check the TCP/IP properties:

1. Click the Start button, and then click Run. This opens the Run dialog box.
2. Type in ncpa.cpl, and then click OK. This opens the Network Connections in your computer.
3. Right-click LAN, and then select Properties. This opens the Local Area Connection Properties dialog box.
4. Select Internet Protocol (TCP/IP), and then click Properties. This opens the Internet Protocol (TCP/IP) dialog box.
5. Select Obtain an IP address automatically.
6. To close the Internet Protocol (TCP/IP) dialog box, click OK.
7. To close the Local Area Connection Properties dialog box, click OK.

Configuring Internet Properties

To set the Internet Properties:

1. Click the Start button, and then click Run. This opens the Run dialog box.
2. Type in inetctl.cpl, and then click Ok. This opens the Internet Properties.
3. Click the Connections Tab.
4. In Dial-up and Virtual Private Network settings, select Never dial a connection.
5. Click Ok the button to close the Internet Properties.

Removing Temporary Internet Files

Temporary Internet files are files from Web sites that are stored in your computer. Delete these files to clean the cache and remove footprints left by the Web pages you visited.

To remove temporary Internet files:

1. Click the Start button, and then click Run. This opens the Run dialog box.
2. Type control, and then click OK. This opens Control Panel.
3. Double-click Internet Options. This opens Internet Options.
4. In the Temporary Internet Files pane, click Delete Cookies.
5. Click Delete Files.
6. To close Internet Properties, click OK.

Installing your Router

Using a 3G USB Modem Stick

If you choose to use a 3G USB Modem Stick you are required to have the following:

- USB Modem Stick
 - Broadband data SIM card
1. Insert your Broadband data SIM card into the 3G USB Modem stick.
 2. Plug in your 3G USB Modem stick on your router's USB port.
 3. Connect the power cable to the router's power jack and plug it in to the wall socket.
 4. Connect your PC to any available Ethernet port using an Ethernet cable or connect via wireless.

Using a DSL or Cable Modem

If you choose to use a DSL or Cable modem you are required to have the following:

- DSL or cable modem
 - Active Internet Account
1. Connect your DSL or Cable modem to the router's WAN port using an Ethernet cable.
 2. Connect the power cable to the router's power jack and plug it in to the wall socket.
 3. Connect your PC to any of available Ethernet port using an Ethernet cable or connect via wireless.

Note: Ensure that the router's IP address does not conflict with the DSL/Cable modem. Please refer to your modem's User Manual on how to change the LAN IP address.

Connecting to the Internet

To Connect to the Internet via the Web User Interface:

1. Open your Internet web browser.
2. Type `http://192.168.1.1` in the address bar and press enter. This opens the login authentication page.
3. Type your Username and Password. Your default Username and Password is admin/admin.
4. Click the Wizard Tab then Follow the step-by-step guide on how to setup the router.



5. Select the Language and Time zone from the drop down box then click Next to continue.



6. Select the Internet Connection type then click Next to Continue.

If you choose UMTS (3G), you are required to have the following:

- USB Modem Stick
- Broadband data SIM card

If you choose WAN, you are required to have the following:

- DSL or cable modem.
- Active Internet Account



7. UMTS 3G connection

Please connect your USB modem stick to ALL0239-3G and make sure that your data SIM card is properly inserted to the modem.

- 3G Access Point Settings – Choose between List and Manual. **List** will provide the APN set by your Internet Service Provider. Choose your Country, Internet Service Operator and the APN. **Manual** you need to manually key in the APN provided by your ISP. Some ISP may require a different name for your APN. Please contact your ISP if you don't have this information

- Username and Password – Some ISP may require a Username and Password set by the Operators. Please contact your ISP if you don't have this information

Choose your preferred Connection Method

- Connect Manually – This connection method requires you to manually press the 'Connect' button each time Internet connection is required. Please note that the Internet connection will not be disconnected unless you manually press the 'Disconnect' button.
- Always connected – This connection method allows your Internet connection to be always ON. You need to manually press the 'Disconnect' button when Internet connection is not required.



8. WAN Connection

Please connect your DSL or Cable modem to ALL0239-3G WAN port using an Ethernet cable, make sure that you have an active Internet account.

Connection Type

- Static IP – select this if your ISP provides you the IP address, Subnet mask, Gateway and DNS server addresses.
- DHCP - if you select this your ALL0239-3G will automatically get an IP address from the DHCP server or from your ISP.
- PPPoE – select this if your ISP provides you the Username and Password for you to connect to the Internet.

The screenshot displays the ALLNET WAN configuration page. At the top left is the ALLNET logo. Below it are navigation buttons for 'Home', 'Wizard', and 'Quick Setup'. There are also checkboxes for 'Advanced Mode' and 'Reboot'. The main configuration area is titled 'WAN [Help]' and contains the following fields:

Field	Value
Connection Method	Static IP (dropdown menu open showing options: Static IP, Static IP, DHCP, PPPoE)
IP Address	7
Subnet Mask	255.255.255.0
Default Gateway	
Primary DNS	
Secondary DNS	

At the bottom of the configuration area, there are three buttons: 'Back', 'Next', and 'Cancel'.

9. Setup your wireless connection, tick Wireless Enabled to activate your wireless connection and set the SSID for your ALL0239-3G. Click Next to continue.



10. Under Summary page verify the settings made then click 'Apply' for the settings to take effect.



WPS (Wi-Fi Protected Setup)

WPS button allows you to activate Wi-Fi Protected Setup (WPS). When you press the WPS button it automatically detects and connects wireless clients into the wireless network by broadcasting the wireless network settings from your Access Point to you wireless device/s.

To setup WPS:

1. Press the WPS button on the router for two seconds, or until the LED blinks
2. Within 2 minutes, press the WPS button on the Wireless Client.

Note: WPS can only be used with wireless client devices that have a compatible WPS component.

Connect/Disconnect Button

Connect/Disconnect button allows you to connect/disconnect to the Internet using your 3.5G mobile broadband.

To Setup Connect/Disconnect Button:

1. Press the Connect/Disconnect button for 2 seconds to change the current status of your 3.5G mobile broadband Internet connection.

Note: This button only applies for UMTS 3.5G Internet Connection type.

About the Web User Interface

To Access the Web User Interface

When your router is already setup open your Web Browser and on the Address bar type in <http://192.168.1.1>

Username: **admin**

Password: **admin**

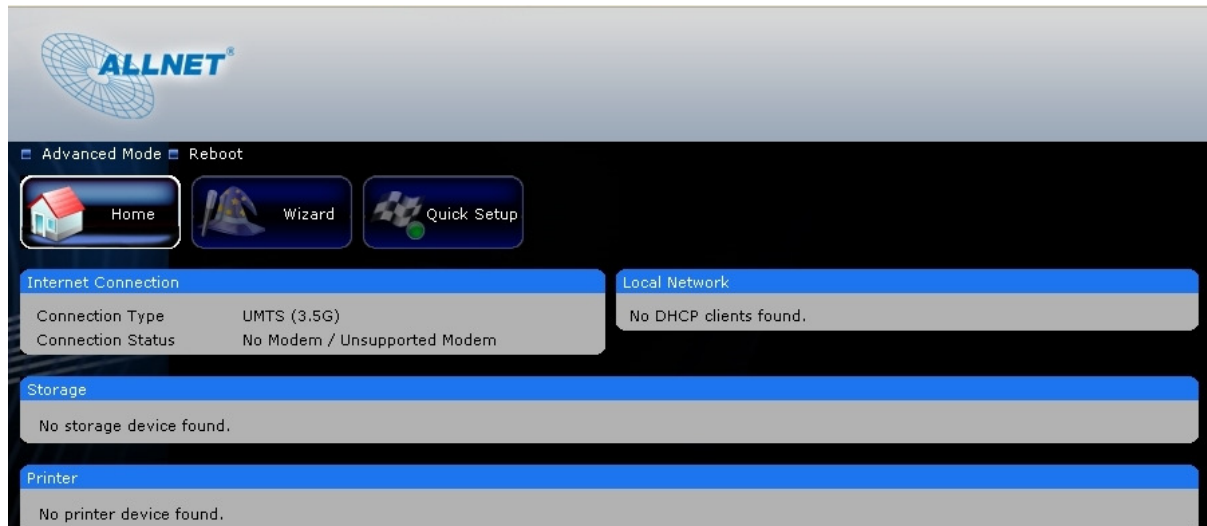


The WEB GUI includes the following settings for your router:

- Basic Mode
 - Home Page
 - Installation Wizard
 - Quick Setup
- Advanced Mode
 - Networking
 - Wireless
 - Application
 - Maintenance

Basic Mode

Home



Internet Connection

This pane will show you the Internet connection type and status of your ALL0239-3G.

Local Network

This pane will show you the lists of the clients that are connected to your ALL0239-3G.

Storage

This pane will show you the status of the mass storages that is connected to your ALL0239-3G. Select the Read/Write option on the drop down menu to have an access on your shared mass storage files.

Accessing the USB Mass Storage Devices

1. Connect the USB Mass Storage on your ALL0239-3G USB port.
2. On your PC click on the **Start** Button>**Run**>type [\\192.168.1.1](http://192.168.1.1) then click **OK**.
3. Samba Server window will open double click the icon folder to open the files.

Printer

This pane will show you the printer that is connected to your ALL0239-3G.

Print Server

To use the print server on the ALL0239-3G, you need to accomplish the following tasks:

1. Install the printer drivers on the computer
2. Connect the printer to your ALL0239-3G.
3. Add a network printer

INSTALL THE PRINTER DRIVERS

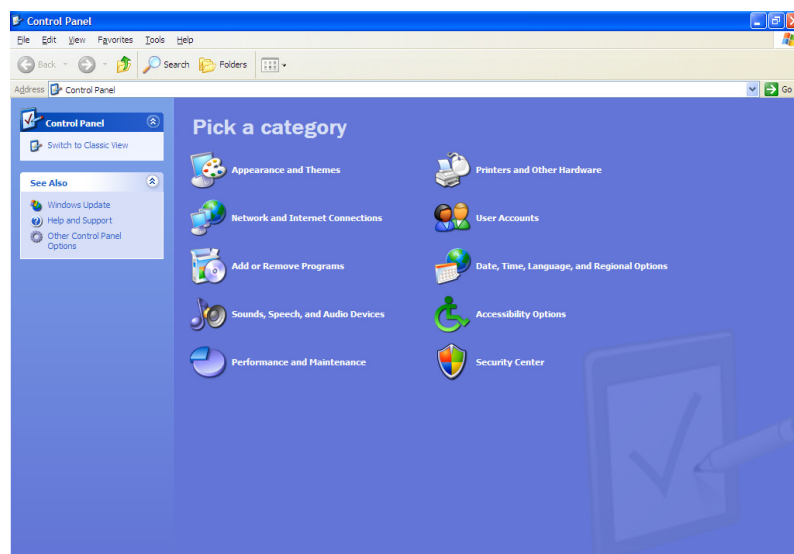
Printers using the USB port come with a software installation CD for installing the printer drivers and applications. The drivers for the printers must be installed on the computer first to prepare it to use the printer when it's connected to the ALL0239-3G. Refer to the printer's documentation on how to install the drivers.

ADD A NETWORK PRINTER

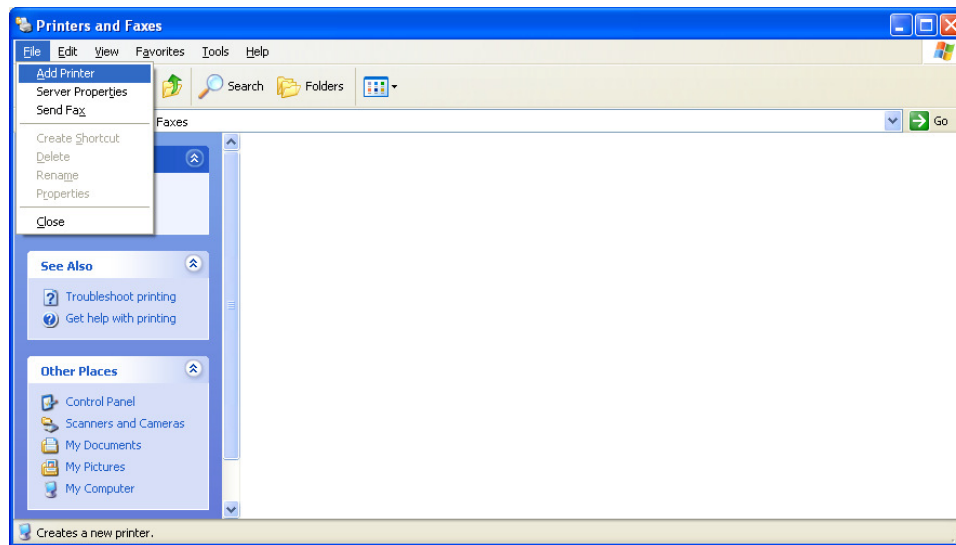
FOR WINDOWS XP

Before you continue, ensure that you have installed the printer's driver on this computer and the printer is attached to the ALL0239-3G.

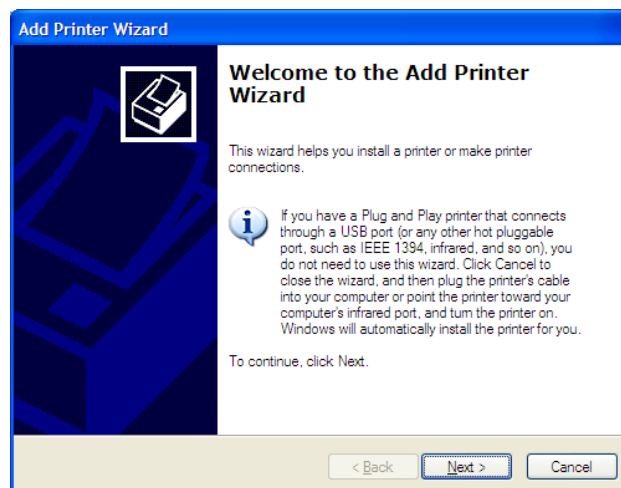
1. Click on the **Start Button > Control Panel > Printers and Other Hardware > Printers and Faxes.**



2. Click on the **File Menu > Add Printer**.



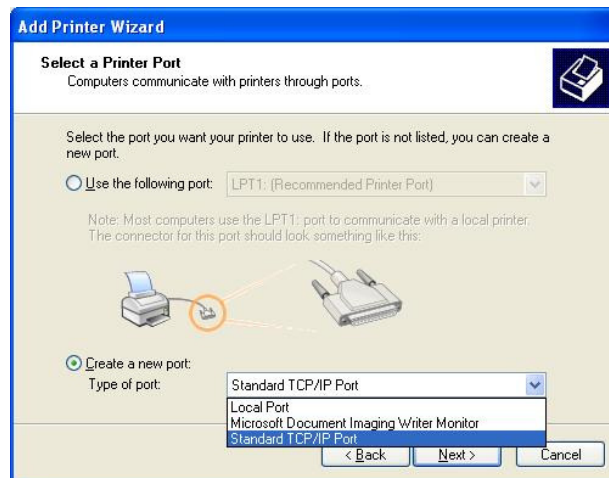
3. Click on **Next** on the Add Printer Wizard page.



4. Choose **Local Printer attached to this computer** and click **Next**, on the Local or Network Printer page.



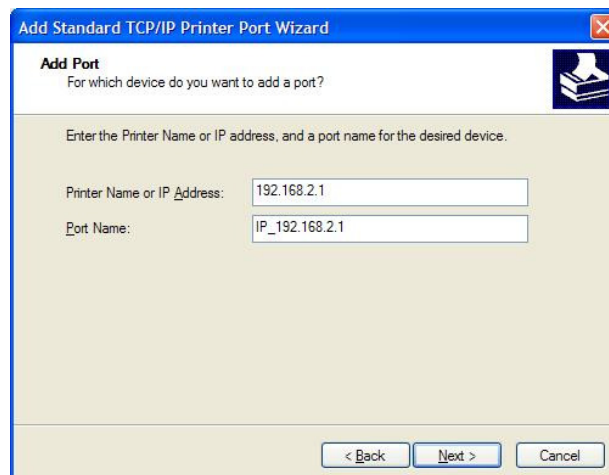
5. Choose **Create a new port** and on the drop down box choose **Standard TCP/IP Port** then click **Next**.



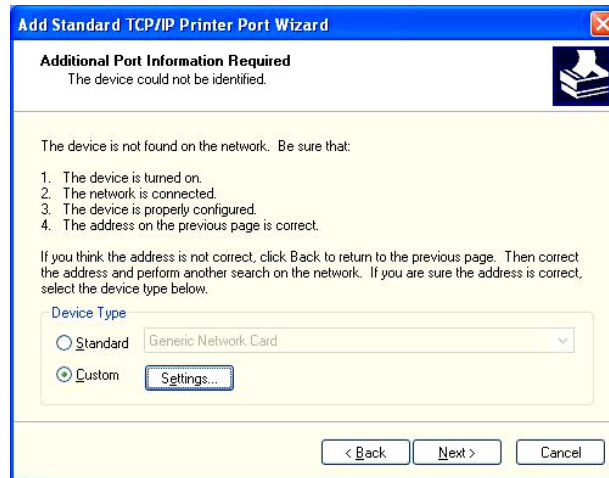
6. Click **Next** button on Welcome to the Add Standard TCP/IP Printer Port Wizard.



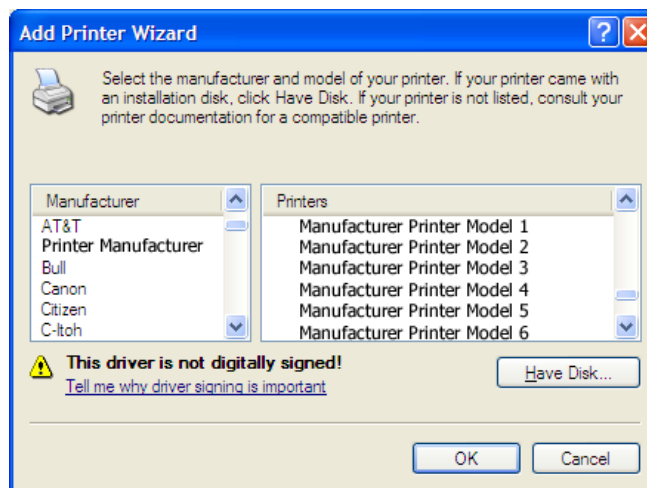
7. Enter your ALL0239-3G's Default Gateway IP address **192.168.1.1** then click **Next**.



8. Under Additional Port Information Required choose **Custom** then click **Next**



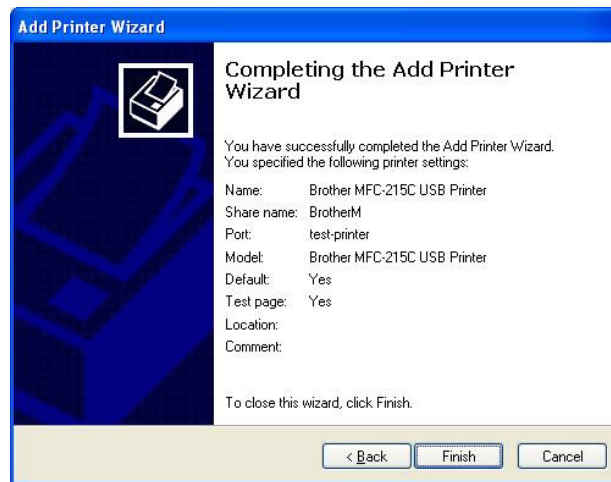
9. Once the computer detects the printer on the Print Server, it will ask for the printer manufacturer and model, a list of printers will be shown, select the your printer from the list and click **OK**.



10. Choose **Keep existing driver (recommended)** then click **Next** until you reach **Completing the Add Printer Wizard**.



11. Click **Finish** to complete the installation.

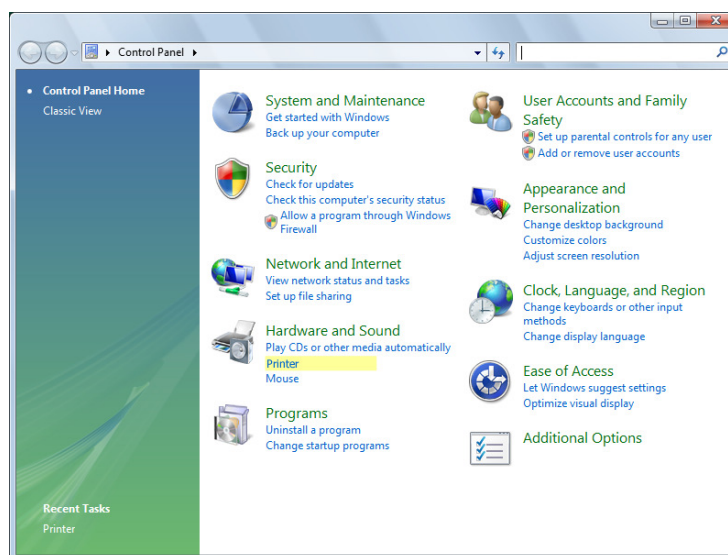


PRINTING A TEST PAGE AFTER INSTALLATION

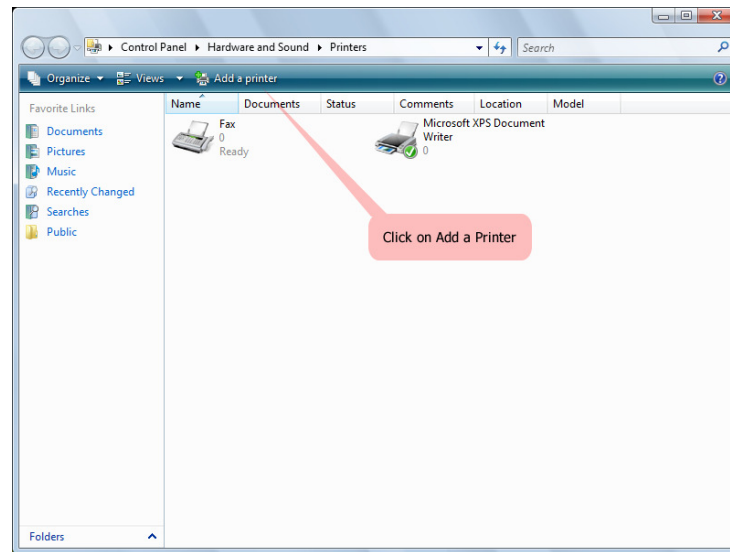
1. Open the Printers and Faxes page from Control Panel.
2. Right click on the new printer and click on Properties.
3. Click on the Print Test Page button on the Printer properties page, the test page will be printed on the network printer.

FOR WINDOWS VISTA

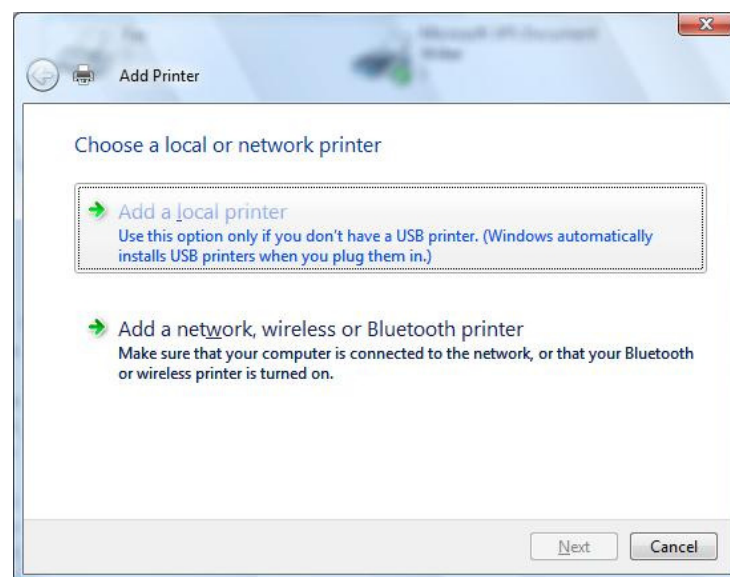
1. Click on the **Start Button**> **Control Panel**.
2. Click **Printer** under the **Hardware and Sound** category.



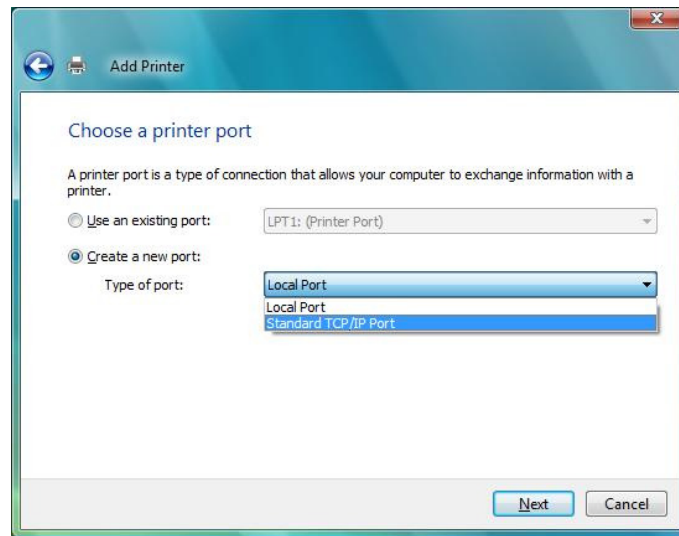
3. Click on **Add a Printer**.



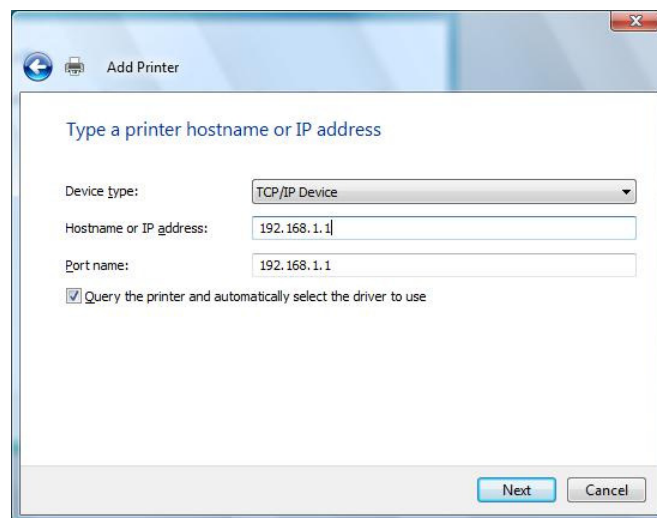
4. Click on **Add a local printer** then click **Next**.



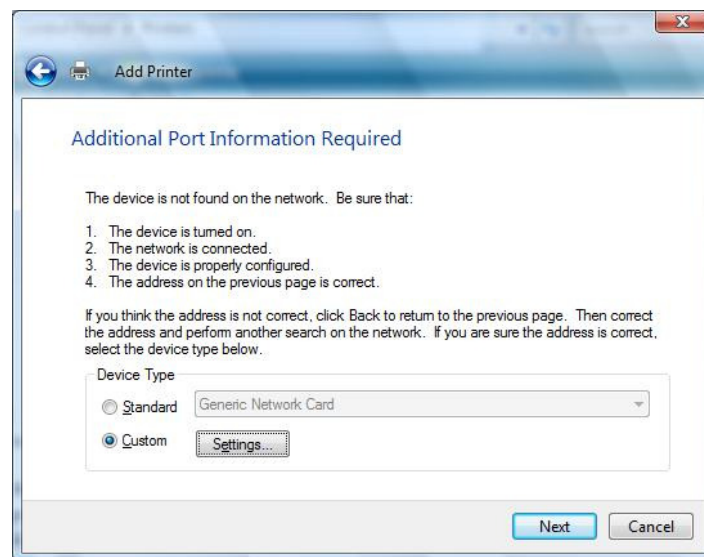
5. Select **Create a new port**, on the drop down box choose **Standard TCP/IP port** then click **Next**.



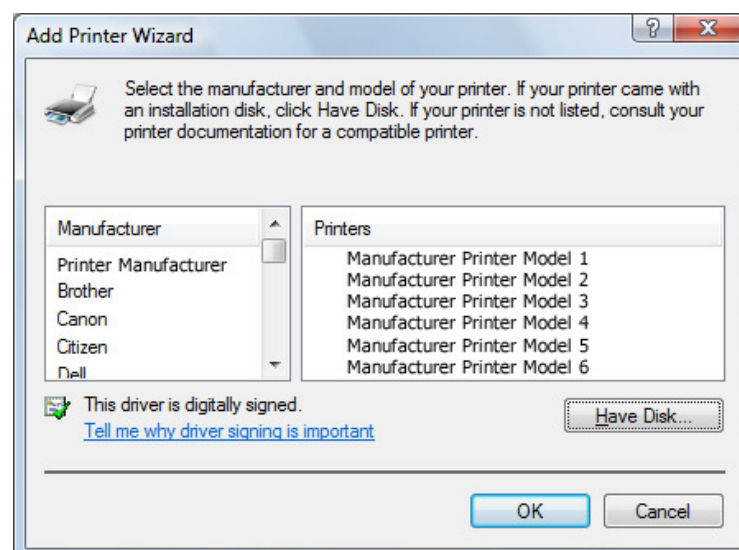
6. Enter the Default Gateway IP address of your ALL0239-3G router **192.168.1.1** then click **Next**.



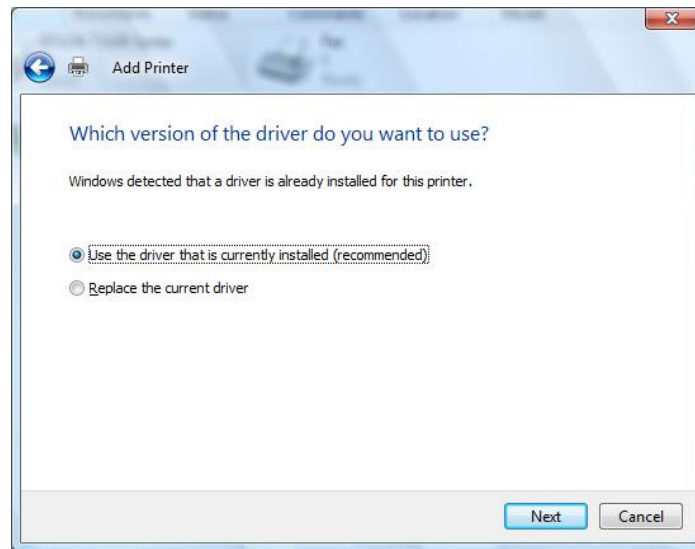
7. Under Additional Port Information Required window, select Custom then click **Next**.



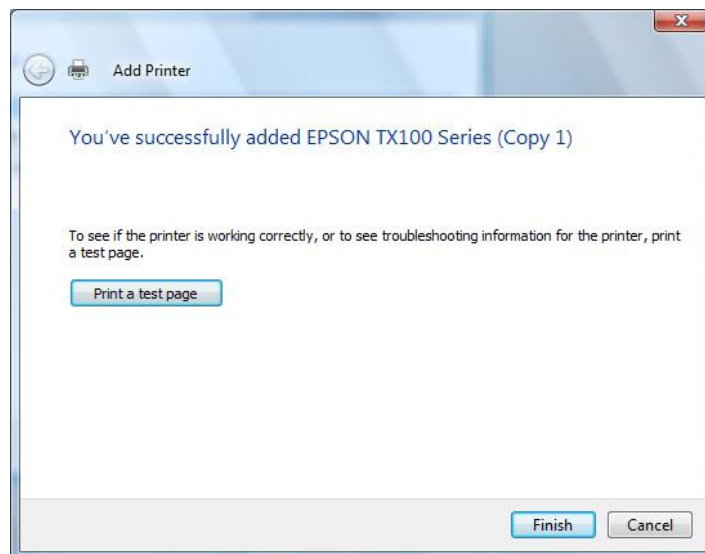
8. Once the computer detects the printer on the Print Server, it will ask for the printer manufacturer and model, a list of printers will be shown, select the your printer from the list and click **OK**.



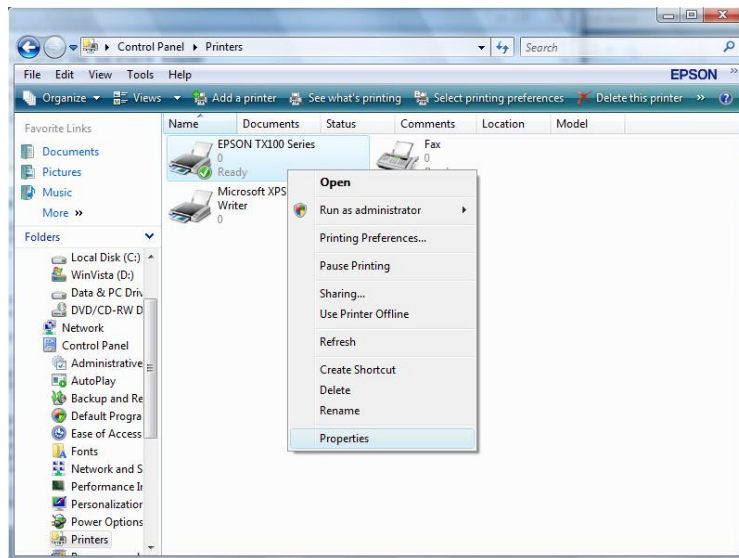
9. Select Use the driver that is currently installed then click **Next**.



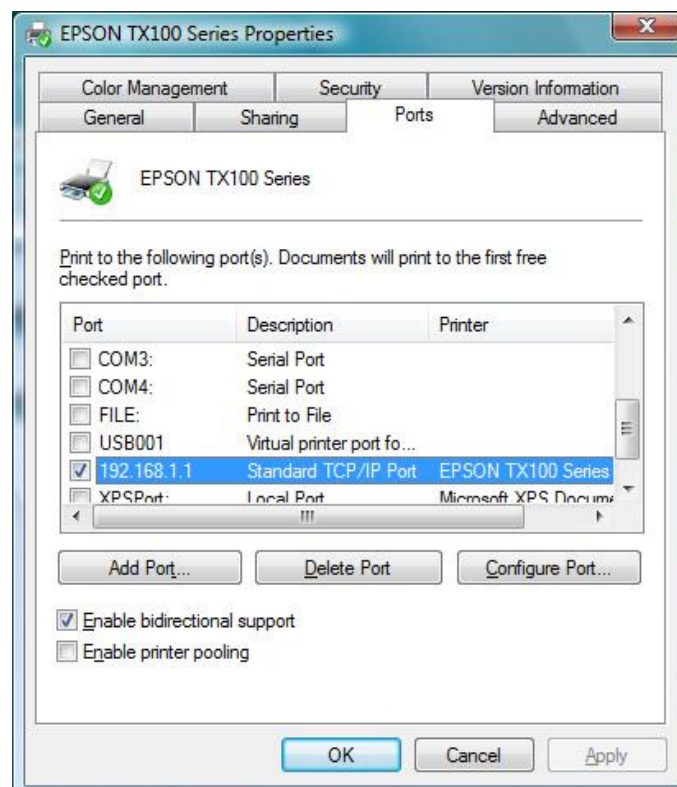
10. To print a test page click on Print a test page on the confirmation screen, click **Finish** to complete the installation.



11. If Printing was unsuccessful right click on the Printer's icon then select **Properties**.



12. Under printer's Properties click Port Tab and tick the IP address (192.168.1.1) that was set on previous settings then click **Apply**.



Note: Scanning, Faxing and Photocopying functions on Multifunction printers are currently not supported on the ALL0239-3G, Print function is the only feature that will work on these printers type when connected to the ALL0239-3G.

Wizard

This section will guide you on how to configure your ALL0239-3G to have an Internet connection.



Language and Time Zone

Select the Language and Time zone from the drop down box then click Next to continue.

Internet Connection Type

Select the Internet Connection type then click Next to Continue.

If you choose UMTS (3.5G), you are required to have the following:

1. USB Modem Stick
2. Broadband data SIM card

If you choose WAN, you are required to have the following:

1. DSL or cable modem.
2. Active Internet Account

UMTS (3G) connection

1. 3G Access Point Settings –Choose between List and Manual.
 - **List** (recommended) will provide the APN set by your Internet Service Provider. Choose your Country, Internet Service Operator and the APN.
 - **Manual** you need to manually key in the APN provided by your ISP. Some ISP may require a different name for your APN. Please contact your ISP if you don't have this information
 - Username and Password – Some ISP may require a Username and Password set by the Operators. Please contact your ISP if you don't have this information
2. Choose the your preferred Connection Method

- Connect Manually – you need to press the Connect button each time Internet connection is required.
- Always connected – Internet connection is always ON. You need to manually press the disconnect button when Internet connection is not required.

WAN connection

On this section you can choose your Internet connection type from Static IP, PPPoE and DHCP.

1. Static IP

Select this Internet connection type if your ISP provides the IP addresses that are required to establish a connection.

- a.) IP Address - Enter the IP address provides by your ISP.
- b.) Subnet Mask - Enter the Subnet Mask provides by your ISP.
- c.) Default Gateway - Enter the Default Gateway provides by you r ISP.
- d.) Primary DNS - Enter the Primary DNS server IP address provides by your ISP.
- e.) Secondary DNS - Enter the Secondary DNS server IP address provides by your ISP.

2. DHCP

Select this Internet connection type for your router to get an IP address from your ISP or the DHCP server.

- a.) Host name - Some ISP requires the host name of your router. You can change the current hostname of your router.
- b.) MAC clone - Some ISP requires that you register the MAC address of your computer. Tick the box to copy your PC's MAC address.
- c.) MAC Address - This is the computer's MAC address that is running the router.

3. PPPoE

Select this Internet connection type if you're ISP provides you a username and password to establish a connection.

- a.) Username - Enter the username provides by your ISP
- b.) Password - Enter the password provides by your ISP

Note: Please contact your Internet Service Provider if you do not have this information.

Wireless

This section allows you to configure your basic wireless settings.

- a.) Wireless Enabled - Uncheck the box to disable your wireless connection.
- b.) Broadcast SSID Enabled - Uncheck the box to hide your ALL0239-3G wireless network name.
- c.) SSID - this is your ALL0239-3G wireless network name.
- d.) WPA Enabled - tick the box if your want to enable your wireless security. This will ensure wireless security on your network.
- e.) Passphrase - Enter the password that is required by your ALL0239-3G to connect via wireless.

Summary

This section will display the entire configuration that was set on your ALL0239-3G.

1. Language and Time Zone

This pane displays the time that you set on your ALL0239-3G.

2. UMTS (WWAN)/WAN

This pane displays the Internet connection type that was set on your ALL0239-3G.

3. Wireless

This pane displays the basic settings of your ALL0239-3G wireless connection.

Click the Finish button for your settings to take effect.



Quick Setup

This section allows you to change the current settings of your ALL0239-3G without going to the step-by-step procedure on how to establish an Internet connection.

The screenshot displays the ALLNET Quick Setup web interface. At the top left is the ALLNET logo. Below it are navigation buttons for Home, Wizard, and Quick Setup. The main content area is titled 'Quick Setup' and contains three sections:

- Language and Time Zone**: Language is set to English; Time Zone is set to (GMT+01:00) Germany.
- UMTS (3.5G)/WAN**: Connection Type is UMTS (3.5G); 3G Access Point Settings is List; Country is Germany; Internet Service Provider and APN are set to Select One; UMTS Connection Method is Always Connected.
- Wireless**: Wireless Enabled, WPA Enabled, and Broadcast SSID are all checked; SSID is ALL0239-3G; Passphrase is zeuszeus.

An Apply button is located at the bottom right of the form.

Language and Time Zone

This pane displays the time that you set on your ALL0239-3G. Configure the settings then click the Apply button for the changes to take effect.

UMTS (3.5G)/WAN

This pane displays the Internet connection type of your ALL0239-3G. You can choose between UMTS (3.5G) and WAN connection. Configure the settings then click the Apply button for the changes to take effect.

Wireless

This pane displays the current Wireless settings of your ALL0239-3G. Configure the settings then click the Apply button for the changes to take effect.

Advanced Page

Network



Local

This section allows you to configure your local network connection.

- Router IP Address – this is the router’s default gateway. Use this IP address to access the router’s Web GUI by enter IP address on the Internet explorer bar.
- Router Subnet Mask – this is the router’s subnet mask.
- DHCP Enabled- Your ALL0239-3G has a built in DHCP server. Your ALL0239-3G will automatically assign an IP address to all the computers that will connect to your network. Check the TCP/IP settings of your computer and make sure to set it on “Obtain an IP automatically”. Note that when you uncheck the button it will disable the DHCP server. You need to have another DHCP server or you need manually set the IP address of the computer when your DHCP is disabled.
- Start IP Address- This field specifies the first of the IP addresses in the IP address pool.
- End IP Address- This field specifies the last of the IP addresses in the IP address pool.
- Subnet Mask- Enter the Subnet Mask provides by your ISP.
- Primary DNS Server- Enter the Primary DNS server IP address provides by your ISP.
- Secondary DNS Server- Enter the Secondary DNS server IP address provides by your ISP.
- Default Gateway- Recommend to use the router’s LAN port IP address.
- Lease Time (sec)- this is the amount of time in which the user is allowed to use the current dynamic IP address.

Internet

This section allows you to choose the Internet connection type that you would like to use.

UMTS (3G)

1. 3G Access Point Settings –Choose between List and Manual. **List** will provide the APN set by your Internet Service Provider. Choose your Country, Internet Service Operator and the APN. **Manual** you need to manually key in the APN provided by your ISP. Some ISP may require a different name for your APN. Please contact your ISP if you don't have this information
2. UMTS Connection Method
 - Connect Manually – you need to press the Connect button each time Internet connection is required.
 - Always connected – Internet connection is always ON. You need to manually press the disconnect button when Internet connection is not required.
 - Dial Number- Enter the dial number provides by your ISP to establish a connection. Different ISP uses different dial number. Please contact your ISP if you don't have this information.
 - Username – Enter the username provides by your ISP.
 - Password – Enter the password provides by your ISP.
 - SIM PIN – Enter the SIM PIN that you set on your SIM card on the required field. Some broadband SIM card requires a PIN to unlock the SIM broadband account.

Note: Please contact your Internet Service Provider if you do not have this information.

WAN

Static IP

Select this Internet connection type if your ISP provides the IP addresses that are required to establish a connection.

- IP Address: Enter the IP address provides by your ISP.
- Subnet Mask: Enter the Subnet Mask provides by your ISP.
- Default Gateway: Enter the Default Gateway provides by your ISP.
- Primary DNS: Enter the Primary DNS server IP address provides by your ISP.
- Secondary DNS: Enter the Secondary DNS server IP address provides by your ISP.

DHCP

Select this Internet connection type for your router to get an IP address from your ISP or the DHCP server.

- Host name: Some ISP requires the host name of your router. You can change the current hostname of your router.

- MAC clone: Some ISP requires that you register the MAC address of your computer. Tick the box to copy your PC's MAC address.
- MAC Address: This is the computer's MAC address that is running the router.

PPPoE

Select this Internet connection type if your ISP provides you a username and password to establish a connection.

- Username: Enter the username provided by your ISP
- Password: Enter the password provided by your ISP

Wireless



Settings

This section allows you to configure your basic wireless settings.

- Wireless Enabled- Uncheck the box to disable your wireless connection.
- SSID- this is your ALL0239-3G wireless network name.
- Broadcast SSID- Uncheck the box to hide your ALL0239-3G wireless network name.
- Wireless Mode – select the wireless connection mode on the drop down menu list. By default it is set to mixed mode.
- Channel- On the drop down box, choose the operating frequency that you would like to use. By default it is set to channel 6. If you notice a lot of interference it is advisable to change the channel.

Security

This section allows you to set the wireless security setting of your network. Select the wireless security that you would like to set on your ALL0239-3G on the drop down menu lists.

- None

Select this if you want your wireless security to be disabled, it is advisable to Enable your wireless security to avoid unauthorized access to your network via wireless.
- WEP

Set the WEP key on the required field. This is the password that your ALL0239-3G will require to connect to it via wireless.

 - WEP default key

You may choose from Hex to ASCII key format for your WEP key.
 - WEP Key 1-4

Select the WEP that you will use to establish a connection between the router and client. Make sure that the WEP key will match on your wireless client's side. Enter the password in HEX (hexadecimal - using characters 0-9, A-F) or ASCII (alphanumeric characters) format.
- WPA; WPA2; WPA/WPA2

Enter the password in the required field between 8-63 characters long.

 - TKIP; AES; TKIP/AES

Choose the encryption that you would like to use. By default it is set to TKIP.

Applications



Port forwarding

Multiple connections are required by some applications, such as Internet games, video conferencing, Internet telephony, and others. These applications have difficulties working through NAT (Network Address Translation). This section is used to open multiple ports or a range of ports in your router and redirect data through those ports to a single PC on your network. You can enter ports in various formats:

1. Rule Name – enter the rule name in the Rule Name box.
2. IP Address - enter the local network IP address of the device that you would like to port forward.
3. Port Range – enter the port number that you would like open on the required field
4. Protocol – choose the protocol that you would like to open then click Apply for the settings to take effect.

Filtering

This section allows you to configure MAC filtering, IP filtering and URL filtering. By default ALL0239-3G will block all the MAC Addresses, IP Addresses and URL from accessing the specific rule/port set on the router.

MAC Address Filtering

This section enables both Port and MAC filtering. MAC filtering allows you to assign different network access based on the unique MAC addresses of the devices connected to the router.

1. On the Filter Type drop down box select MAC Address Filtering.
2. Enter the MAC address of the device that you would like to filter.
3. Enter the Rule name on the required field (example Bob's PC).
4. Choose the protocol that you would like to filter.
5. Enter the port number in the required field. Click Apply for the settings to take effect.

IP Filtering

This section enables both Port and IP filtering. IP filtering allows you to assign different network access based on the IP addresses of the devices connected to the router.

1. On the Filter Type drop down box select IP Address Filtering.
2. Enter the IP address of the device that you would like to filter.
3. Enter the Rule name on the required field (example Bob's PC).
4. Choose the protocol that you would like to filter.
5. Enter the port number in the required field. Click Apply for the settings to take effect.

Note: All incoming access on your network is blocked. If you want to have an access within your network from WAN please use Port Forwarding.

URL Filtering

This section allows you to control the access to a certain Websites on the Internet by entering URL name on the required field.

1. Enter the domain name on the URL address field (www.xxx.com or www.xxx.net). Click Apply for the settings to take effect.

DDNS (Dynamic DNS)

DDNS allows you to assign a fixed domain and host name to a dynamic Internet IP addresses.

2. Choose your DDNS service provider from the drop down box.
3. Enter the username of your DDNS account.
4. Enter the password of your DDNS account.
5. Enter the Domain Name that you received from the Dynamic DNS provider (xxx.domainname.com). Click Apply for the settings to take effect.

System

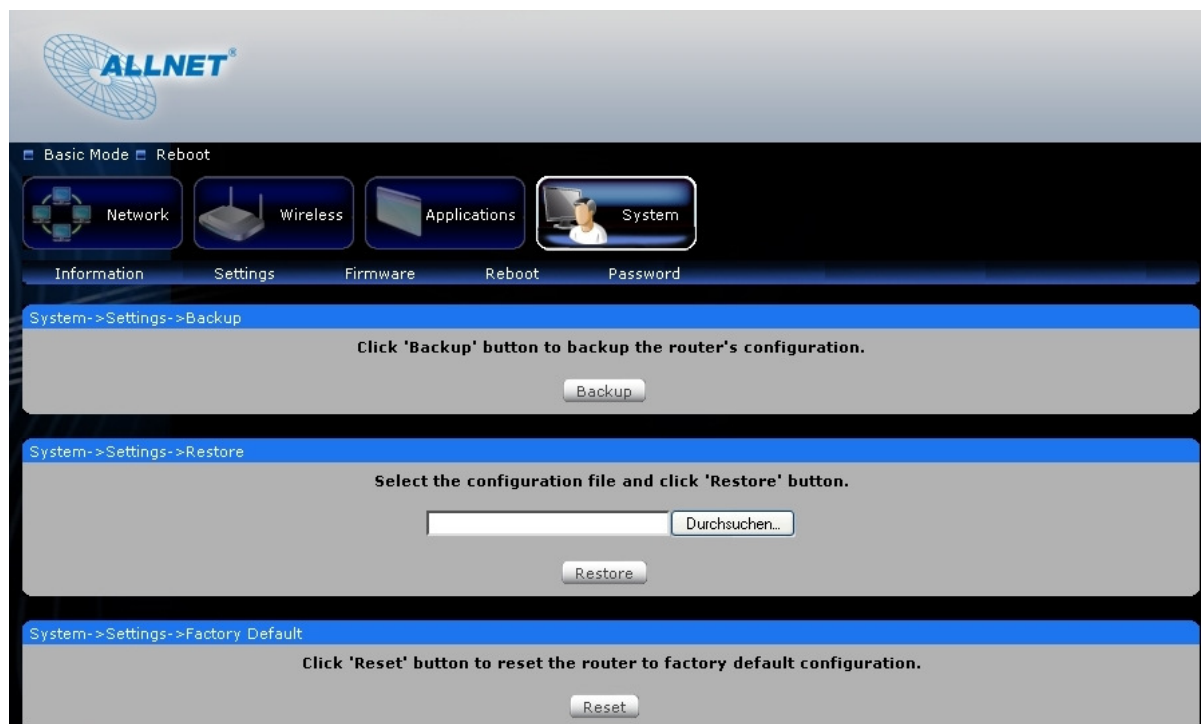
System Information

This section shows the current firmware information and the router's MAC addresses.

Firmware Version	201.23.1
Build Date	Oct 23 2009
Serial Number	GS1001123456789
LAN MAC Address	00:30:0A:E6:30:C0
Wireless MAC Address	00:30:0A:E6:30:C1

Settings

This section allows you to Back up, Save and Restore to factory default the router's configuration.



Backup

Click the 'Backup' button to save the current settings of your router. If you will change the current configuration of your HW500-3G it is recommended that you backup the router's current settings.

Restore

Click the browse button and select the saved configuration setting of the router then click 'Restore'. This allows you to load the restored configuration file of your router.

Restore to factory default

Click the 'Reset' button to reset the router's configuration back to its Factory Default settings.

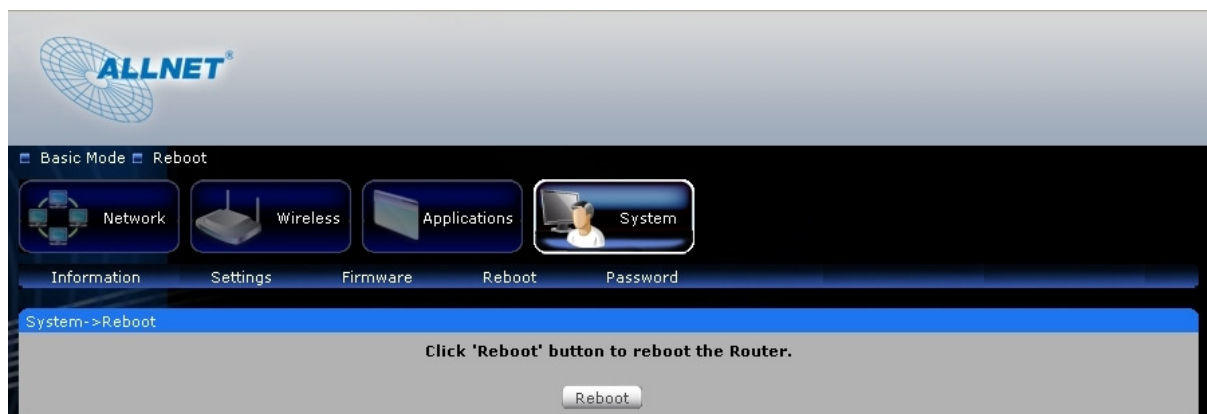
Firmware Upgrade

This section allows you to upload the latest firmware for your router. Please make sure that you download the correct firmware from the product support website.



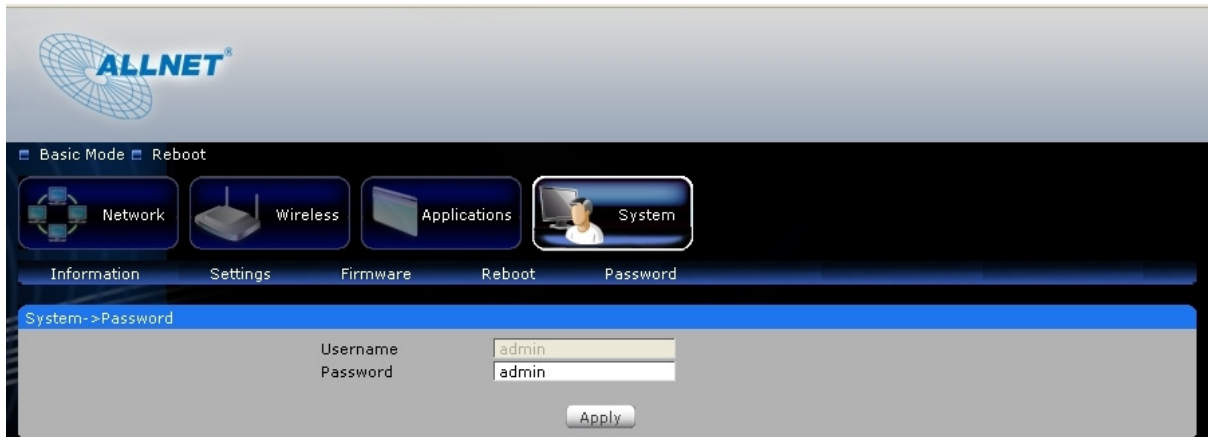
Reboot

Click the 'Reboot' button to reboot the device



Password

This section allows you to change the default password setting of the router to access the Web GUI. Enter the new password then click apply.



Regulatory Compliance Notices

European Regulations

The product has been designed, tested and manufactured according to the European R&TTE directive 1999/5/EC.





EC – Declaration of conformity

04.11.2009

For the following product

ALL0239-3G 3G-Mobile Broadband plus 4-Port Wireless-N Router



This equipment conforms with the requirements of the Council Directive **R&TTE 1999/5/EC** on the approximation of the laws of the member states relating to Radio and Telecommunication Terminal Equipment and the mutual recognition of their conformity.

The safety advice in the documentation accompanying the products shall be obeyed. The conformity to the above directive is indicated by the CE sign on the device.

The ALL0239-3G 3G-Mobile Broadband plus 4-Port Wireless-N Router conforms to the European Directives 1989/336/EEC.

This equipment meets the following conformance standards:

EN 300 328 **V1.7.1 2006-10**
EN 301489-1 **V1.6.1 2005-9**
EN 301489-17 **V1.2.1 2002-8**
EN 60950-1:2006

This equipment is intended to be operated in all countries.
This declaration is made by

ALLNET Computersysteme GmbH
Maistraße 2
82110 Germering
Germany

and can be downloaded from <http://www.allnet.de/ce-certificates/>

Copyright © 2009. All rights reserved.

No part of this document may be reproduced, republished, or retransmitted in any form or by any means whatsoever, whether electronically or mechanically, including, but not limited to, by way of photocopying, recording, information recording, or through retrieval systems without the express written permission of the owner. Product specifications contained in this document are subject to change without notice. All other company or product names mentioned are used for identification purposes only and may be trademarks of their respective owners.

Manufacturer:
ALLNET GmbH



ALLNET Deutschland GmbH
Maistrasse 2
82110 Germering
Tel. +49 89 894 222 22
Fax +49 89 894 222 33
E-Mail: info@allnet.de