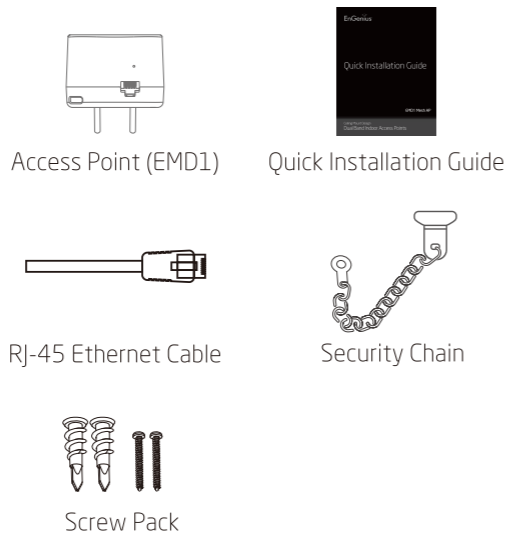


Quick Installation Guide

EMD1 Mesh AP
version 1.0

Wireless Managed Indoor Access Point

Package Contents



Minimum Requirements

- + Broadband Internet Service (Cable or DSL Modem)
- + Internet Browser (Internet Explorer, Safari, Firefox, Chrome)
- + EnGenius Mesh Router (To use with EMR Series Routers)
- + EnGenius Wireless Management L2 Switch (To use with EWS Series Management Switches)

Three Types Of Installation For Different Operation

A) Wireless Mesh AP Installation with EMR Series Routers



B) Managed Access Point Installation with Wireless Management Switch

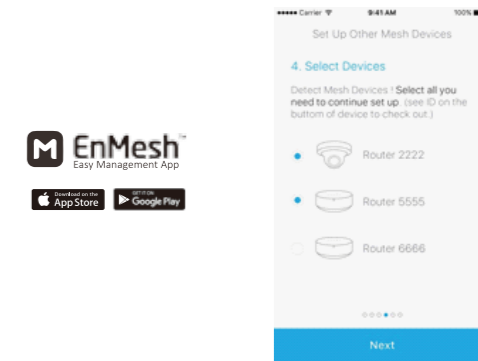


C) Stand-alone Access Point Installation



Wireless Mesh AP Installation with EMR Series Routers

- A) Search for "EnMesh by EnGenius" on App Store or Google Play
- B) Download the EnMesh APP to set up the EnGenius Mesh Router
- C) Add EMD1 via "Wizard" or "Device Page" in EnMesh App

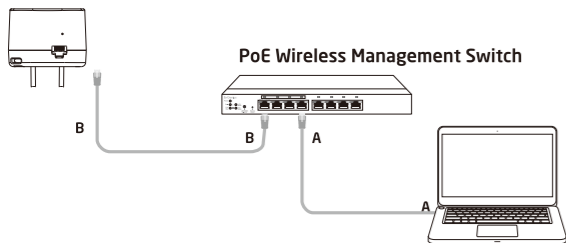


Note: EMD1 will be shown "EnGenius + SN last 6 digits" in EnMesh easy setup page.

Managed Access Point Installation with Wireless Management Switch

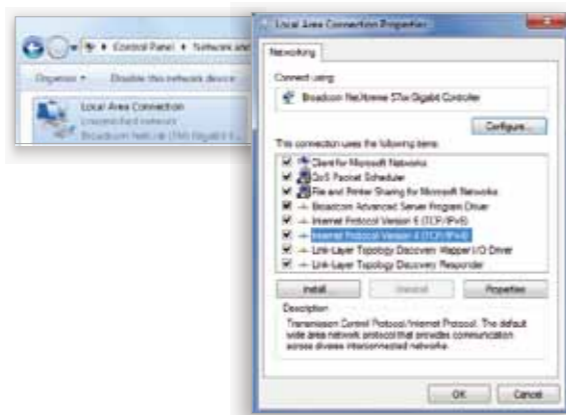
1 Connecting the Access Point (Through EnGenius Wireless Management Switch)

- A) Connect one end of the **Ethernet Cable** into an **Ethernet Port** on the front panel of the EnGenius Wireless Management Switch and the other end to the Ethernet Port on the computer.
- B) Connect another **Ethernet Cable** into the **LAN Port** of the Managed AP and the other end to the **Ethernet Port** on the Wireless Management Switch. With the Wireless Management Switches, the Managed AP is able to obtain a proper assigned IP address for further configurations.



2 IP Address Configuration

A) Once your computer is on, ensure that your TCP/IP is set to **On** or **Enabled**. Open Network Connections and then click **Local Area Connection**. Select **Internet Protocol Version 4 (TCP/IPv4)**.

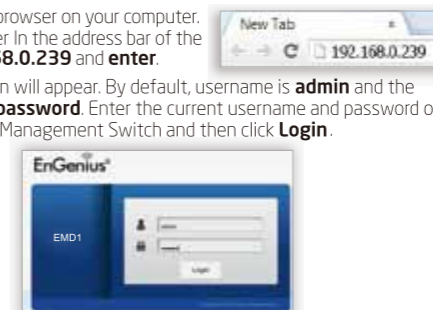


B) If your computer is already on a network, ensure that you have set it to a Static IP Address on the interface. (Example: 192.168.0.88 and the Subnet Mask address as 255.255.255.0.)



3 Management Switch Setup

- A) Open a web browser on your computer, enter in the address bar of the web **192.168.0.239** and **enter**.
- B) A login screen will appear. By default, username is **admin** and the password is **password**. Enter the current username and password of the Wireless Management Switch and then click **Login**.



* Your mode number may be different in the web browser interface.

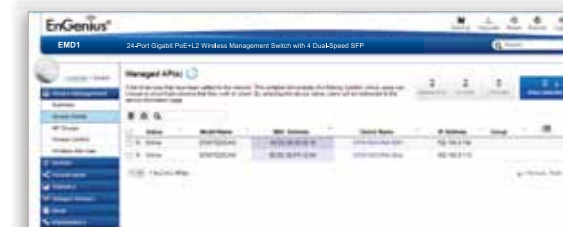
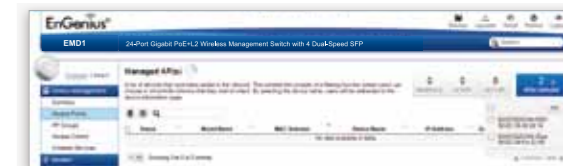
C) The EnGenius Wireless Management Switch User Interface will appear. Make sure the **Controller State** is set to **Enabled**.



4 Adding Managed AP

(Through EnGenius Wireless Management Switch GUI)

A) All Managed AP(s) connected to the same network as the Wireless Management Switch will appear on the right side of the screen, under **Detected** list. Locate and select the Managed AP by checking the box and click **Add** to manage the device.

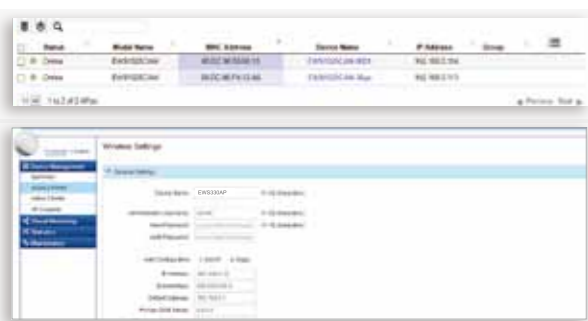


B) You may configure your Managed AP(s) after you successfully connect to the Wireless Management Switch through its **GUI**.

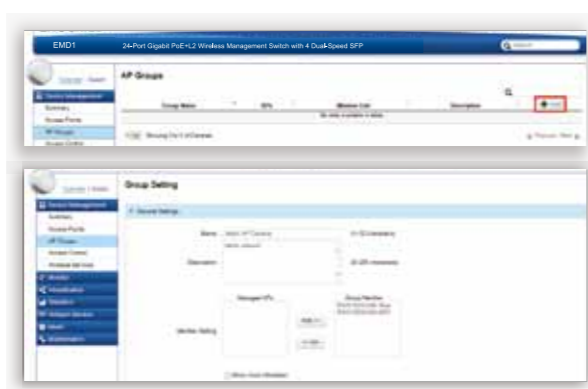
5 Configuring Managed AP

(Through EnGenius Wireless Management Switch GUI)

A) Configure Managed AP(s) through the GUI interface from the switch for WLAN settings under **Device Management**. Click the "Device Name" in order to configure your Managed AP.



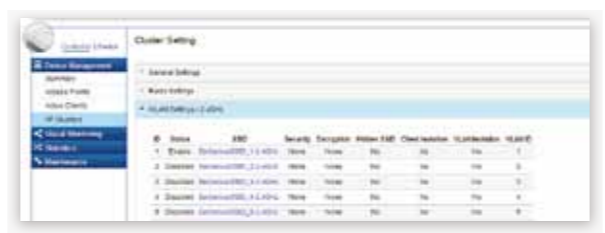
B) Add Managed AP(s) to a specific **AP Group** to save repetitive configuration tasks.



C) Users may create several groups simultaneously to accommodate their deployments under **AP Groups**.



D) For distinct settings, EnGenius Wireless Management switches still offer individual Managed Access Point customization for cluster members such as different channels that best adapt your local WLAN deployments.

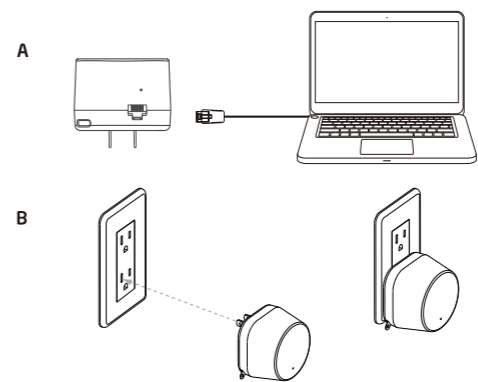


E) Upon successful connection and setup, user can review sections of the web management pages and unleash more features for WLAN deployment and performance monitoring.

Stand-alone Access Point Installation

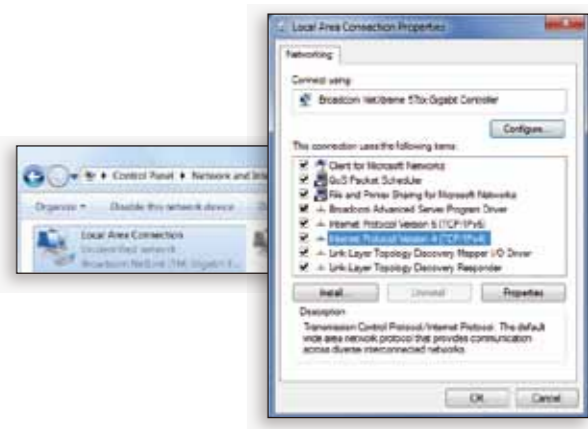
1 Connecting the Access Point

- A) Connect one end of the Ethernet cable into the Ethernet port of the Access Point and the other end to the Ethernet port on the computer.
- B) Plug in the EMD1 to an electrical outlet and wait the LED flash blue.

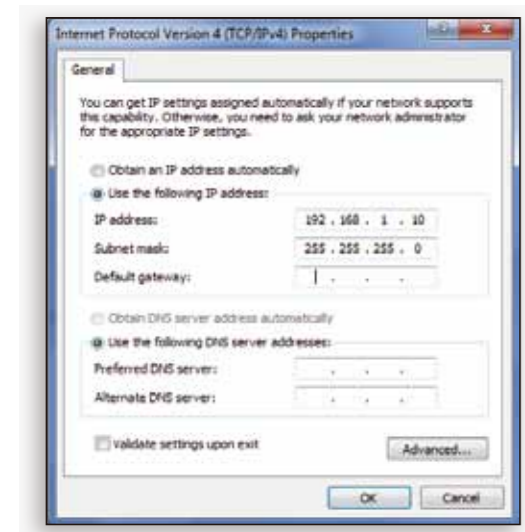


2 IP Address Configuration

Once your computer is on ensure that your TCP/IP is set to **On** or **Enabled**. Open **Network Connections** and then click **Local Area Connection**. Select **Internet Protocol Version 4 (TCP/IPv4)**.



B) If your PC is already on network, ensure that you have set it to a static IP Address on the interface. (Example: 192.168.1.10 and the Subnet Mask address as 255.255.255.0).



3 Access Point Setup

- A) Open a web browser on your computer. In the address bar of the web browser, enter **192.168.1.1** and **enter**.
- B) A login screen will appear. By default, the username of the Access Point is **admin** and the password is **admin**. Enter the current username and password of the Access Point and then click **Login**.



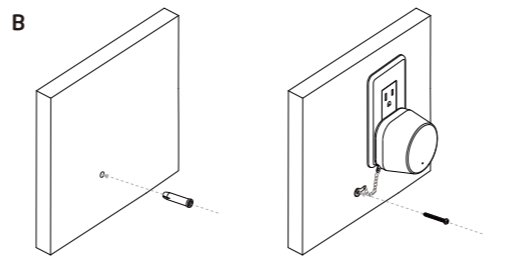
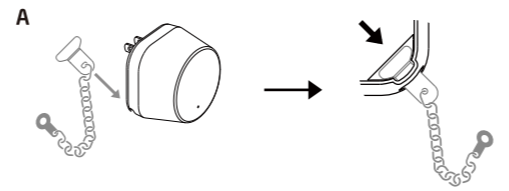
C) The EnGenius Access Point User Interface will appear. This device can operate in Access Point operating mode.



* Your model number may be different in the web browser interface.

Access Point Anti-Theft Protection

- A) Use security chain to through the security hole of EMD1.
- B) Use screw to through the iron hole of security chain and fasten the screw on the wall.



Technical Support

Country of Purchase	Service Center	Service Information
North America www.engeniustech.com	Canada	rma@engeniustech.com Toll Free: 888 397 2788 Local: (+1) 905 940 8181
	Los Angeles, USA	support@engeniustech.com Toll Free: 888 735 7888 Local: (+1) 714 432 8668
Europe www.engeniustech.com	Netherlands	support@engeniustech.com Local: (+31) 40 8200 887
Africa / Middle East www.engeniustech.com	Dubai, UAE	support@engeniustech.com Local: (+971) 4 357 5599
Asia / Oceania www.engeniustech.com	Singapore	techsupport@engeniustech.com Local: (+65) 6227 1088
Taiwan www.engeniustech.com	Taiwan, R.O.C.	twsupport@engeniustech.com Toll Free: 0800 003 885 Local: (+886) 2 2652 1808



Maximum data rates are based on the IEEE standards. Actual throughput and range may vary depending on many factors including environment conditions, distance between devices, radio interference in the operating environment, and mix of devices in the network. Feature and specification subject to change without notice. This device complies with Part 15 of the FCC Rules. Operation is subject to the following two conditions: (1) this device may not cause harmful interference, and (2) this device must accept any interference received, including interference that may cause undesired operation. Trademark and registered trademarks are the property of their respective owners. For United States of America: Copyright © 2018 EnGenius Technologies, Inc. All rights reserved.

Federal Communication Commission Interference Statement

This device complies with Part 15 of the FCC Rules. Operation is subject to the following two conditions: (1) This device may not cause harmful interference, and (2) this device must accept any interference received, including interference that may cause undesired operation.

This equipment has been tested and found to comply with the limits for a Class B digital device, pursuant to Part 15 of the FCC Rules. These limits are designed to provide reasonable protection against harmful interference in a residential installation. This equipment generates, uses and can radiate radio frequency energy and, if not installed and used in accordance with the instructions, may cause harmful interference to radio communications. However, there is no guarantee that interference will not occur in a particular installation. If this equipment does cause harmful interference to radio or television reception, which can be determined by turning the equipment off and on, the user is encouraged to try to correct the interference by one of the following measures:

- Reorient or relocate the receiving antenna.
- Increase the separation between the equipment and receiver.
- Connect the equipment into an outlet on a circuit different from that to which the receiver is connected.
- Consult the dealer or an experienced radio/TV technician for help.

FCC Caution:

Any changes or modifications not expressly approved by the party responsible for compliance could void the user's authority to operate this equipment.

This transmitter must not be co-located or operating in conjunction with any other antenna or transmitter.

Radiation Exposure Statement:

This equipment complies with FCC radiation exposure limits set forth for an uncontrolled environment. This equipment should be installed and operated with minimum distance 20cm between the radiator & your body.