

TP-LINK®

User Guide

TL-MR3220

3G/3.75G Wireless Lite N Router



COPYRIGHT & TRADEMARKS

Specifications are subject to change without notice. **TP-LINK®** is a registered trademark of TP-LINK TECHNOLOGIES CO., LTD. Other brands and product names are trademarks or registered trademarks of their respective holders.

No part of the specifications may be reproduced in any form or by any means or used to make any derivative such as translation, transformation, or adaptation without permission from TP-LINK TECHNOLOGIES CO., LTD. Copyright © 2010 TP-LINK TECHNOLOGIES CO., LTD. All rights reserved.

<http://www.tp-link.com>

FCC STATEMENT



This equipment has been tested and found to comply with the limits for a Class B digital device, pursuant to part 15 of the FCC Rules. These limits are designed to provide reasonable protection against harmful interference in a residential installation. This equipment generates, uses and can radiate radio frequency energy and, if not installed and used in accordance with the instructions, may cause harmful interference to radio communications. However, there is no guarantee that interference will not occur in a particular installation. If this equipment does cause harmful interference to radio or television reception, which can be determined by turning the equipment off and on, the user is encouraged to try to correct the interference by one or more of the following measures:

- Reorient or relocate the receiving antenna.
- Increase the separation between the equipment and receiver.
- Connect the equipment into an outlet on a circuit different from that to which the receiver is connected.
- Consult the dealer or an experienced radio/ TV technician for help.

This device complies with part 15 of the FCC Rules. Operation is subject to the following two conditions:

- 1) This device may not cause harmful interference.
- 2) This device must accept any interference received, including interference that may cause undesired operation.

Any changes or modifications not expressly approved by the party responsible for compliance could void the user's authority to operate the equipment.

Note: The manufacturer is not responsible for any radio or tv interference caused by unauthorized modifications to this equipment. Such modifications could void the user's authority to operate the equipment.

FCC RF Radiation Exposure Statement

“To comply with FCC RF exposure compliance requirements, this grant is applicable to only Mobile Configurations. The antennas used for this transmitter must be installed to provide a separation distance of at least 20 cm from all persons.

CE Mark Warning



This is a class B product. In a domestic environment, this product may cause radio interference, in which case the user may be required to take adequate measures.

National restrictions

This device is intended for home and office use in all EU countries (and other countries following the EU directive 1999/5/EC) without any limitation except for the countries mentioned below:

Country	Restriction	Reason/remark
Bulgaria	None	General authorization required for outdoor use and public service
France	Outdoor use limited to 10 mW e.i.r.p. within the band 2454-2483.5 MHz	Military Radiolocation use. Refarming of the 2.4 GHz band has been ongoing in recent years to allow current relaxed regulation. Full implementation planned 2012
Italy	None	If used outside of own premises, general authorization is required
Luxembourg	None	General authorization required for network and service supply(not for spectrum)
Norway	Implemented	This subsection does not apply for the geographical area within a radius of 20 km from the centre of Ny-Ålesund
Russian Federation	None	Only for indoor applications

Note: Please don't use the product outdoors in France.

DECLARATION OF CONFORMITY

For the following equipment:

Product Description: **3G/3.75G Wireless Lite N Router**

Model No.: **TL-MR3220**

Trademark: **TP-LINK**

We declare under our own responsibility that the above products satisfy all the technical regulations applicable to the product within the scope of Council Directives:

Directives 1999/5/EC

The above product is in conformity with the following standards or other normative documents

ETSI EN 300 328 V1.7.1: 2006

ETSI EN 301 489-1 V1.8.1:2008& ETSI EN 301 489-17 V2.1.1:2009

EN60950-1:2006

Recommendation 1999/519/EC

EN62311:2008

Directives 2004/108/EC

The above product is in conformity with the following standards or other normative documents

EN 55022:2006 +A1:2007

EN 55024:1998+A1:2001+A2:2003

EN 61000-3-2:2006

EN 61000-3-3:1995+A1:2001+A2:2005

Directives 2006/95/EC

The above product is in conformity with the following standards or other normative documents

EN60950-1:2006

Directive (ErP) 2009/125/EC

Audio/Video, information and communication technology equipment- Environmentally conscious design

EN62075:2008

Person is responsible for marking this declaration:



Yang Hongliang

Product Manager of International Business

TP-LINK TECHNOLOGIES CO., LTD.

South Building, No.5 Keyuan Road, Central Zone, Science & Technology Park, Nanshan,
Shenzhen, P. R. China

CONTENTS

Package Contents	1
Chapter 1. Introduction	2
1.1 Overview of the Router.....	2
1.2 Conventions	2
1.3 Main Features	3
1.4 Panel Layout	3
1.4.1 The Front Panel.....	3
1.4.2 The Rear Panel	4
Chapter 2. Connecting the Router	6
2.1 System Requirements	6
2.2 Installation Environment Requirements.....	6
2.3 Connecting the Router	6
Chapter 3. Quick Installation Guide	8
3.1 TCP/IP Configuration	8
3.2 Quick Installation Guide	10
Chapter 4. Configuring the Router	17
4.1 Login	17
4.2 Status	17
4.3 Quick Setup.....	19
4.4 QSS.....	19
4.5 Network.....	25
4.5.1 Internet Access	25
4.5.2 3G.....	27
4.5.3 WAN	33
4.5.4 MAC Clone	43
4.5.5 LAN.....	44
4.6 Wireless	45
4.6.1 Wireless Settings.....	45
4.6.2 Wireless Security.....	48
4.6.3 Wireless MAC Filtering	52
4.6.4 Wireless Advanced	54
4.6.5 Wireless Statistics.....	55
4.7 DHCP	56
4.7.1 DHCP Settings	56

4.7.2	DHCP Clients List	58
4.7.3	Address Reservation	58
4.8	Forwarding	60
4.8.1	Virtual Servers	60
4.8.2	Port Triggering	62
4.8.3	DMZ	64
4.8.4	UPnP	64
4.9	Security	65
4.9.1	Basic Security	66
4.9.2	Advanced Security	67
4.9.3	Local Management	68
4.9.4	Remote Management	69
4.10	Parental Control	70
4.11	Access Control	73
4.11.1	Rule	73
4.11.2	Host	76
4.11.3	Target	78
4.11.4	Schedule	80
4.12	Static Routing	82
4.13	Bandwidth Control	83
4.13.1	Control Settings	83
4.13.2	Rules List	84
4.14	IP & MAC Binding Setting	85
4.14.1	Binding Setting	85
4.14.2	ARP List	87
4.15	Dynamic DNS	88
4.15.1	Comexe.cn DDNS	88
4.15.2	Dyndns.org DDNS	89
4.15.3	No-ip.com DDNS	90
4.16	System Tools	91
4.16.1	Time Setting	92
4.16.2	Diagnostic	93
4.16.3	Firmware Upgrade	94
4.16.4	Factory Defaults	95
4.16.5	Backup & Restore	96
4.16.6	Reboot	97
4.16.7	Password	97

4.16.8 System Log.....	98
4.16.9 Statistics	100
Appendix A: FAQ.....	102
Appendix B: Configuring the PCs.....	107
Appendix C: Specifications	111
Appendix D: Glossary.....	112
Appendix E: Compatible 3G/3.75G USB Modem	114

Package Contents

The following items should be found in your package:

- TL-MR3220 3G/3.75G Wireless Lite N Router
- DC Power Adapter for TL-MR3220 3G/3.75G Wireless Lite N Router
- Quick Installation Guide
- Resource CD for TL-MR3220 3G/3.75G Wireless Lite N Router, including:
 - This Guide
 - Other Helpful Information

 **Note:**

Make sure that the package contains the above items. If any of the listed items are damaged or missing, please contact with your distributor.

Chapter 1. Introduction

Thank you for choosing the TL-MR3220 3G/3.75G Wireless Lite N Router.

1.1 Overview of the Router

TP-LINK understands the need for sharing the 3G/3.75G connection locally that benefits our end users. We realize the convenience with our latest wireless Lite N 3G Routers ----- they give you the freedom to quickly set up a stable and high speed wireless network, up to 150Mbps, on-the-go and share a 3G/3.75G connection. By connecting a UMTS/HSPA/EVDO USB Card to the router, a Wi-Fi hotspot is instantly established allowing users to share a Internet connection anywhere 3G/3.75G coverage is available. So whether you're on the train, camping, or at a construction site, you'll have a reliable wireless connection to accommodate your networking needs.

3G/WAN Broadband Connection

The TL-MR3220 3G/3.75G Wireless Lite N Router provides 3G and WAN (xDSL, static IP, or dynamic IP) two kinds of broadband connections to get on the Internet, you can via the Internet no matter in home or outside on business. Automatic 3G/WAN failover feature just provide nonstop internet connection

Incredibly High Speed

TP-LINK 3G Router provides up to 150Mbps, 15x that of traditional 11g products, surpasses 11G performance enabling the use of high bandwidth-consuming applications such as HD Videos.

Quick Secure Setup

With just pressing on the 'QSS' button, the router automatically establishes a WPA2 secure connection for solid security in under a minute.

Quality of Service-QoS

QoS acts as a "bandwidth manager" to ensure that those programs that are sensitive to lag are given as much bandwidth as possible to avoid lag. This feature makes an impression immensely when users are streaming video or music and especially when playing online games where lag often means "Game Over".

1.2 Conventions

The Router or TL-MR3220 mentioned in this guide stands for TL-MR3220 3G/3.75G Wireless Lite N Router without any explanation.

1.3 Main Features

- One 10/100M Auto-Negotiation RJ45 WAN port, four 10/100M Auto-Negotiation RJ45 LAN ports, supporting Auto MDI/MDIX
- Compatible with UMTS/HSPA/EVDO USB dongle
- Automatic 3G / WAN failover
- Wireless Lite N speed up to 150Mbps
- 1T2R MIMO, CCA technologies deliver greater coverage and higher speed
- Wireless security encryption easily at a push of “QSS” button
- WDS wireless bridge provides seamless bridging to expand your wireless network
- Backward compatible with 802.11b and 802.11g devices
- Provides WPA/WPA2, WPA-PSK/WPA2-PSK authentication, TKIP/AES encryption security
- Supports 3G/Dynamic IP/Static IP/PPPoE/L2TP/PPTP Internet access
- Supports Virtual Server, Special Application and DMZ host
- Supports UPnP, Dynamic DNS, Static Routing
- Provides Automatic-connection and Scheduled Connection on certain time to the Internet
- Built-in NAT and DHCP server supporting static IP address distributing
- Connects Internet on demand and disconnects from the Internet when idle for PPPoE
- Provides 64/128/152-bit WEP encryption security and wireless LAN ACL (Access Control List)
- Supports Flow Statistics
- Supports firmware upgrade and Web management

1.4 Panel Layout

1.4.1 The Front Panel

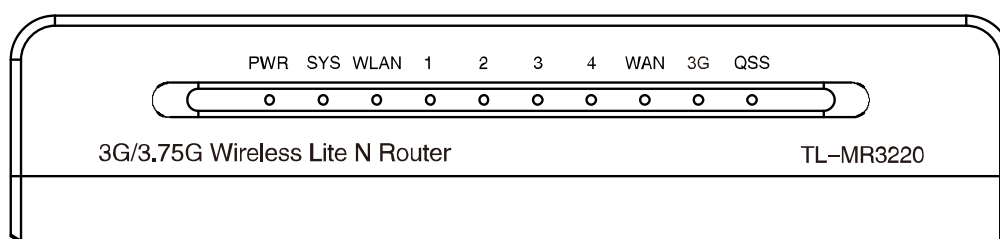


Figure 1-1 Front Panel sketch

The Router's LEDs are located on the front panel (View from left to right).

Name	Status	Indication
PWR	On	Power is on.
	Off	Power is off.
SYS	On	The Router is initializing.
	Flashing	The Router is working properly.
	Off	The Router has a system error.
WLAN	Flashing	The Wireless function is enabled.
	Off	The Wireless function is disabled.
WAN, LAN1-4	On	A device is linked to the corresponding port but there is no activity.
	Flashing	An active device is linked to the corresponding port.
	Off	No device is linked to the corresponding port.
3G	On	The USB 3G dongle is connected.
	Flashing	Data is received or sent through the 3G dongle.
	Off	No device is linked to the USB port.
QSS	Slow Flash	A wireless device is connecting to the network by QSS function. This process will last in the first 2 minutes.
	On	A wireless device has been successfully added to the network by QSS function.
	Quick Flash	A wireless device failed to be added to the network by QSS function.

Table 1-1 The LEDs description

Note:

After a device is successfully added to the network by QSS function, the QSS LED will keep on for about 5 minutes and then turn off.

1.4.2 The Rear Panel

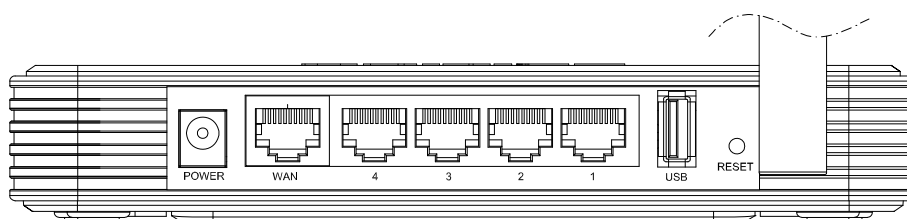


Figure 1-2 Rear Panel sketch

The following parts are located on the rear panel (View from left to right).

- **POWER:** The Power socket is where you will connect the power adapter. Please use the power adapter provided with this TL-MR3220 3G/3.75G Wireless Lite N Router.
- **WAN:** This WAN port is where you will connect the DSL/cable Modem, or Ethernet
- **1,2,3,4 (LAN):** These ports (1, 2, 3, 4) connect the Router to the local PC(s)
- **USB:** Connect to the USB Modem.
- **RESET:**

There are two ways to reset to the Router's factory defaults:

- 1) Use the **Factory Defaults** function on “**System Tools -> Factory Defaults**” page in the Router's Web-based Utility.
 - 2) Use the Factory Default **Reset** button: With the Router powered on, use a pin to press and hold the **Reset** button (about 5 seconds) until the SYS LED becomes quick-flash from slow-flash. And then release the button and wait the Router to reboot to its factory default settings.
- **Wireless antenna:** To receive and transmit the wireless data.

Chapter 2. Connecting the Router

2.1 System Requirements

- Broadband Internet Access Service (DSL/Cable/Ethernet)
- One DSL/Cable Modem that has an RJ45 connector (which is not necessary if the Router is connected directly to the Ethernet.)
- PCs with a working Ethernet Adapter and an Ethernet cable with RJ45 connectors
- TCP/IP protocol on each PC
- Web browser, such as Microsoft Internet Explorer 5.0 , Netscape Navigator 6.0 or above

2.2 Installation Environment Requirements

- Place the Router in a well ventilated place far from any heater or heating vent
- Avoid direct irradiation of any strong light (such as sunlight)
- Keep at least 2 inches (5 cm) of clear space around the Router
- Operating Temperature: 0°C~40°C (32°F~104°F)
- Operating Humidity: 10%~90%RH, Non-condensing

2.3 Connecting the Router

Before installing the Router, make sure your PC is connected to the Internet through the broadband service successfully. If there is any problem, please contact your ISP. After that, please install the Router according to the following steps. Don't forget to pull out the power plug and keep your hands dry.

1. Power off your PC, Cable/DSL Modem, and the Router.
2. Locate an optimum location for the Router. The best place is usually at the center of your wireless network. The place must accord with the [Installation Environment Requirements](#).
3. Adjust the direction of the antenna. Normally, upright is a good direction.
4. Connect the PC(s) or Switch/Hub in your LAN to the LAN Ports of the 3G Router with Ethernet cable, shown in Figure 2-1.
5. The 3G Router supports both 3G and WAN connection, so you can insert 3G USB Modem and Connect the DSL/Cable Modem to the WAN port of the 3G Router, shown in Figure 2-1. Please visit our website <http://www.tp-link.com> to get the latest USB modems compatibility, and we recommend you to check whether the modem in your hand has already been

tested by us.

6. Connect the power adapter to the power socket on the Router, and the other end into an electrical outlet. The Router will start to work automatically.
7. Power on your PC and Cable/DSL Modem.

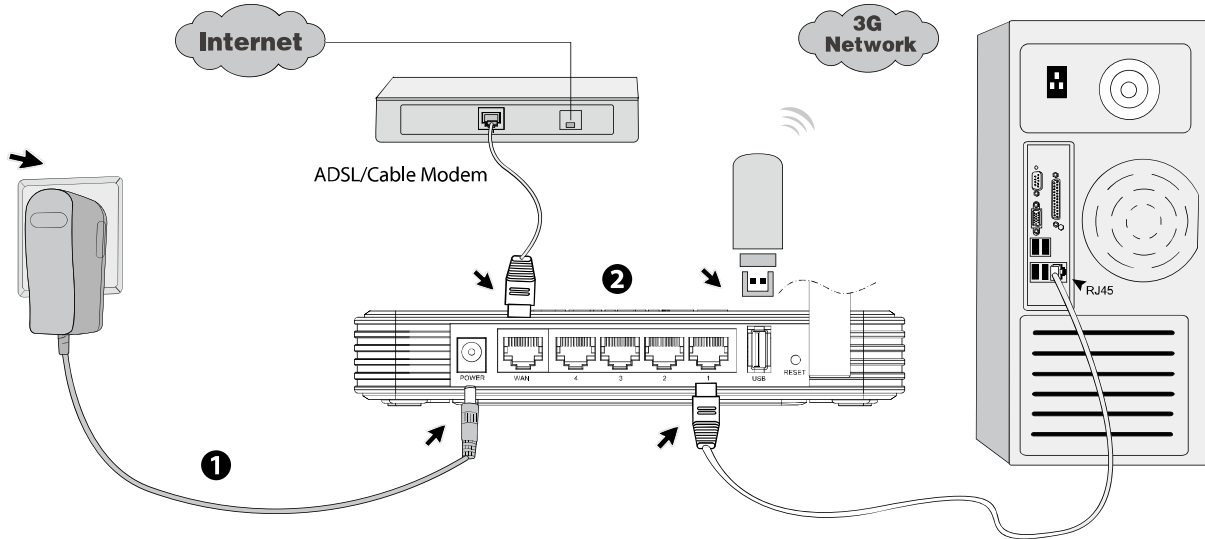


Figure 2-1 Hardware Installation of the 3G/3.75G Wireless Lite N Router

Chapter 3. Quick Installation Guide

This chapter will show you how to configure the basic functions of your 3G/3.75G Wireless Lite N Router using **Quick Setup Wizard** within minutes.

3.1 TCP/IP Configuration

The default IP address of the 3G/3.75G Wireless Lite N Router is 192.168.1.1. And the default Subnet Mask is 255.255.255.0. These values can be changed as you desire. In this guide, we use all the default values for description.

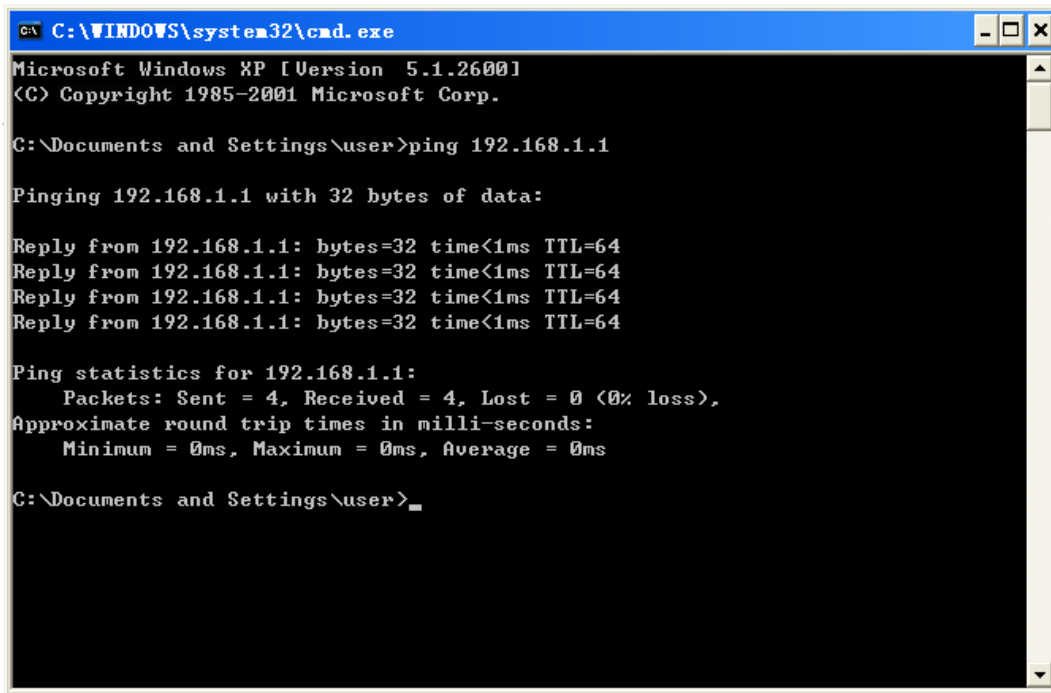
Connect the local PC to the LAN ports of the Router. And then you can configure the IP address for your PC in the following two ways.

- Configure the IP address manually
 - 1) Set up the TCP/IP Protocol for your PC. If you need instructions as to how to do this, please refer to [Appendix B: "Configuring the PC."](#)
 - 2) Configure the network parameters. The IP address is 192.168.1.xxx ("xxx" is any number from 2 to 254), Subnet Mask is 255.255.255.0, and Gateway is 192.168.1.1 (The Router's default IP address)
- Obtain an IP address automatically
 - 1) Set up the TCP/IP Protocol in "**Obtain an IP address automatically**" mode on your PC. If you need instructions as to how to do this, please refer to [Appendix B: "Configuring the PC."](#)
 - 2) Then the built-in DHCP server will assign IP address for the PC.

Now, you can run the Ping command in the **command prompt** to verify the network connection between your PC and the Router. The following example is in Windows 2000 OS.

Open a command prompt, and type *ping 192.168.1.1*, and then press **Enter**.

- If the result displayed is similar to the Figure 3-1, it means the connection between your PC and the Router has been established well.



```
C:\WINDOWS\system32\cmd.exe
Microsoft Windows XP [Version 5.1.2600]
(C) Copyright 1985-2001 Microsoft Corp.

C:\Documents and Settings\user>ping 192.168.1.1

Pinging 192.168.1.1 with 32 bytes of data:

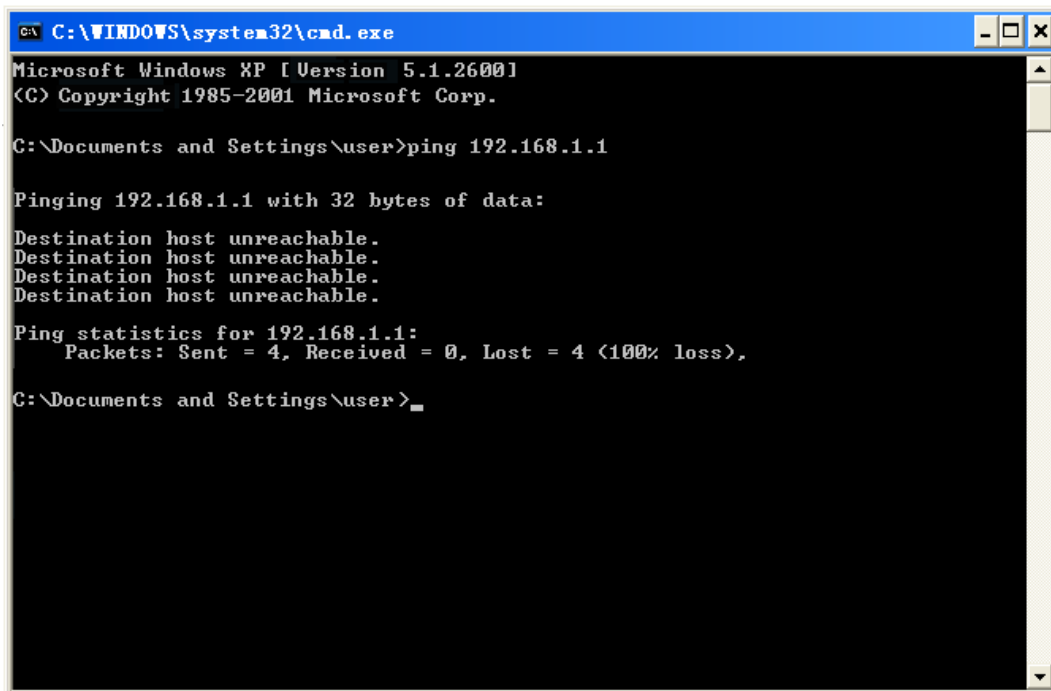
Reply from 192.168.1.1: bytes=32 time<1ms TTL=64
Reply from 192.168.1.1: bytes=32 time<1ms TTL=64
Reply from 192.168.1.1: bytes=32 time<1ms TTL=64
Reply from 192.168.1.1: bytes=32 time<1ms TTL=64

Ping statistics for 192.168.1.1:
    Packets: Sent = 4, Received = 4, Lost = 0 (0% loss),
    Approximate round trip times in milli-seconds:
        Minimum = 0ms, Maximum = 0ms, Average = 0ms

C:\Documents and Settings\user>
```

Figure 3-1 Success result of Ping command

- If the result displayed is similar to the Figure 3-2, it means the connection between your PC and the Router is failed.



```
C:\WINDOWS\system32\cmd.exe
Microsoft Windows XP [Version 5.1.2600]
(C) Copyright 1985-2001 Microsoft Corp.

C:\Documents and Settings\user>ping 192.168.1.1

Pinging 192.168.1.1 with 32 bytes of data:

Destination host unreachable.
Destination host unreachable.
Destination host unreachable.
Destination host unreachable.

Ping statistics for 192.168.1.1:
    Packets: Sent = 4, Received = 0, Lost = 4 (100% loss),

C:\Documents and Settings\user>
```

Figure 3-2 Failure result of Ping command

Please check the connection following these steps:

1. Is the connection between your PC and the Router correct?

Note:

The 1/2/3/4 LEDs of LAN ports which you link to on the Router and LEDs on your PC's adapter should be lit.

2. Is the TCP/IP configuration for your PC correct?

 **Note:**

If the Router's IP address is 192.168.1.1, your PC's IP address must be within the range of 192.168.1.2 ~ 192.168.1.254.

3.2 Quick Installation Guide

With a Web-based (Internet Explorer or Netscape® Navigator) utility, it is easy to configure and manage the 3G/3.75G Wireless Lite N Router. The Web-based utility can be used on any Windows, Macintosh or UNIX OS with a Web browser.

1. To access the configuration utility, open a web-browser and type in the default address <http://192.168.1.1> in the address field of the browser.



Figure 3-3 Login the Router

After a moment, a login window will appear, similar to the Figure 3-4. Enter **admin** for the User Name and Password, both in lower case letters. Then click the **OK** button or press the **Enter** key.



Figure 3-4 Login Windows

 **Note:**

If the above screen does not pop-up, it means that your Web-browser has been set to a proxy. Go to Tools menu>Internet Options>Connections>LAN Settings, in the screen that appears, cancel the Using Proxy checkbox, and click **OK** to finish it.

2. After successfully login, you can click the **Quick Setup** to quickly configure your Router.

Quick Setup

Start >> Internet Access >> WAN / 3G >> Wireless >> Finish

The quick setup will tell you how to configure the basic network parameters.

To continue, please click the **Next** button.

To exit, please click the **Exit** button.

Exit

Next

Figure 3-5 Quick Setup

3. Click **Next**, and then **Internet Access** page will appear, shown in Figure 3-6. Select a desired Internet access mode and then click **Next**. The configuration for each mode is similar. Here we take **3G Preferred** mode for example.

Quick Setup - Internet Access

Start >> Internet Access >> WAN / 3G >> Wireless >> Finish

The router provides four Internet access mode for you to choose:

- 3G Preferred** - Use 3G as the primary access, WAN as a backup.
- 3G Only** - Only use 3G as the access to the Internet.
- WAN Preferred** - Use WAN as the primary access, 3G as a backup.
- WAN Only** - Only use WAN as the access to the Internet.

Back

Next

Figure 3-6 Choose Internet Access Mode

➤ **3G Preferred**

In this mode, the router will try 3G access first. If 3G access fails and WAN access is valid, or if no 3G USB modem is inserted, the router would switch to WAN access. Once the router succeeds to connect to the 3G network, the router would stop the WAN connection and switch back to 3G access immediately.

➤ **3G Only**

In this mode, the router will try 3G access only. WAN access is disabled.

➤ **WAN Preferred**

In this mode, the router will try WAN access first. If the WAN access fails, and 3G access is valid, the router would switch to 3G access. Once the router succeeds to connect to the

WAN network, the router would stop the 3G connection and switch back to WAN access immediately.

➤ **WAN Only**

In this mode, the router will try WAN access only. 3G access is disabled.

4. The next screen will appear as shown in Figure 3-7. After finishing the configuration on this page, click **Next** to continue,

Quick Setup - 3G

Start >> Internet Access >> 3G >> WAN Connection Type >> Wireless >> Finish

If your location or ISP is not listed, or the default Dial number / APN is not the latest one, please enable **Set the Dial Number and APN manually** and fill in the right ones.

Location:	<input type="text" value="Australia"/>	
Mobile ISP:	<input type="text" value="Bigpond"/>	Default Dial Number: "*99**#" APN: "telstra.bigpond"
	<input type="checkbox"/> Set the Dial Number and APN manually	
Dial Number:	<input type="text" value="*99**#"/>	
APN:	<input type="text" value="telstra.bigpond"/>	
Username:	<input type="text"/>	(optional)
Password:	<input type="text"/>	(optional)

Figure 3-7

- **Location** - Select the location where you're enjoying the 3G card.
 - **Mobile ISP** - Select the ISP (Internet Service Provider) you apply to for 3G service. The router will show the default Dial Number and APN of that ISP. If your ISP is not listed in the **Mobile ISP**, check the box before **Set the Dial Number and APN manually** and fill the Dial Number and APN blanks below.
 - **Dial Number & APN** - Fill these two parameters manually after **Set the Dial Number and APN manually** is checked.
 - **Username & Password** - Enter the Username and Password provided by your ISP. These fields are optional but case-sensitive.
5. You will then see Figure 3-8. Select **Auto-Detect**, the Router will automatically detect the connection type your ISP provides. Make sure the cable is securely plugged into the WAN port before detection. The appropriate configuration page will be displayed when an active

Internet service is successfully detected by the Router.

Quick Setup - WAN Connection Type

Start >> Internet Access >> 3G >> WAN Connection Type >> Wireless >> Finish

The Quick Setup is preparing to set up your connection type of WAN port.

The Router will try to detect the Internet connection type your ISP provides if you select the **Auto-Detect** option. Otherwise, you need to specify the connection type manually.

Auto-Detect - Let the Router automatically detect the connection type your ISP provides.

PPPoE - For this connection, you will need your account name and password from your ISP.

Dynamic IP - Your ISP uses a DHCP service to assign your Router an IP address when connecting to the Internet.

Static IP - This type of connection uses a permanent, fixed (static) IP address that your ISP assigned.

Figure 3-8

- If the connection type detected is **PPPoE**, the next screen will appear as shown in Figure 3-9. Enter the **User Name** and **Password** provided by your ISP. These fields are case sensitive. If you have difficulty with this process, please contact your ISP.

Quick Setup - PPPoE

Start >> Internet Access >> 3G >> WAN Connection Type >> Wireless >> Finish

User Name:

Password:

Figure 3-9 Quick Setup – PPPoE

- If the connection type detected is Dynamic IP, the next screen will appear as shown in Figure 3-11. Then you can go on with the wireless configuration.
- If the connection type detected is Static IP, the next screen will appear as shown in Figure 3-10. Enter the parameters in the corresponding blanks.

Quick Setup - Static IP

Start >> Internet Access >> 3G >> WAN Connection Type >> Wireless >> Finish

IP Address:

Subnet Mask:

Default Gateway: (Optional)

Primary DNS: (Optional)

Secondary DNS: (Optional)

Figure 3-10 Quick Setup - Static IP

6. Click **Next** to continue, the Wireless settings page will appear as shown in Figure 3-11.

Quick Setup - Wireless

Start >> Internet Access >> 3G >> WAN Connection Type >> Wireless >> Finish

Wireless Radio:

SSID:

Region:

Channel:

Mode:

Channel Width:

Max Tx Rate:

Wireless Security:

Disable Security

WPA-PSK/WPA2-PSK

PSK Password:

(You can enter ASCII characters between 8 and 63 or Hexadecimal characters between 8 and 64.)

No Change

Figure 3-11 Quick Setup – Wireless

- **Wireless Radio** - Enable or disable the wireless radio choosing from the pull-down list.
- **SSID** - Enter a value of up to 32 characters. The same name of SSID (Service Set Identification) must be assigned to all wireless devices in your network. Considering your wireless network security, the default SSID is set to be TP-LINK_XXXXXX (XXXXXX

indicates the last unique six numbers of each Router's MAC address). This value is case-sensitive. For example, *TEST* is NOT the same as *test*.

- **Region** - Select your region from the pull-down list. This field specifies the region where the wireless function of the Router can be used. It may be illegal to use the wireless function of the Router in a region other than one of those specified in this field. If your country or region is not listed, please contact your local government agency for assistance.
- **Channel** - This field determines which operating frequency will be used. The default channel is set to **Auto**, so the AP will choose the best channel automatically. It is not necessary to change the wireless channel unless you notice interference problems with another nearby access point.
- **Mode** - This field determines the wireless mode which the Router works on.
- **Channel Width** - Select any channel width from the pull-down list. The default setting is automatic, which can adjust the channel width for your clients automatically.
- **Max Tx Rate** - You can limit the maximum transmission rate of the Router through this field.
- **Wireless Security** - You can select one of the following security options.
 - **Disable Security** - The wireless security function can be enabled or disabled. If disabled, the wireless stations will be able to connect the Router without encryption. It is recommended strongly that you choose one of following options to enable security.
 - **WPA-PSK/WPA2-PSK** - Select WPA based on pre-shared passphrase.

PSK Password - You can enter **ASCII** or **Hexadecimal** characters.

For **ASCII**, the key can be made up of any numbers 0 to 9 and any letters A to Z, the length should be between 8 and 63 characters.

For **Hexadecimal**, the key can be made up of any numbers 0 to 9 and letters A to F, the length should be between 8 and 64 characters.

Please also note the key is case sensitive, this means that upper and lower case keys will affect the outcome. It would also be a good idea to write down the key and all related wireless security settings.
 - **No Change** - If you chose this option, wireless security configuration will not change!

These settings are only for basic wireless parameters. For advanced settings, please refer to [Section 4.6: "Wireless"](#).

7. Click the **Next** button. You will then see the **Finish** page.

If you don't make any changes on the **Wireless** page, you will see the **Finish** page as shown in Figure 3-12. Click the **Finish** button to finish the **Quick Setup**.

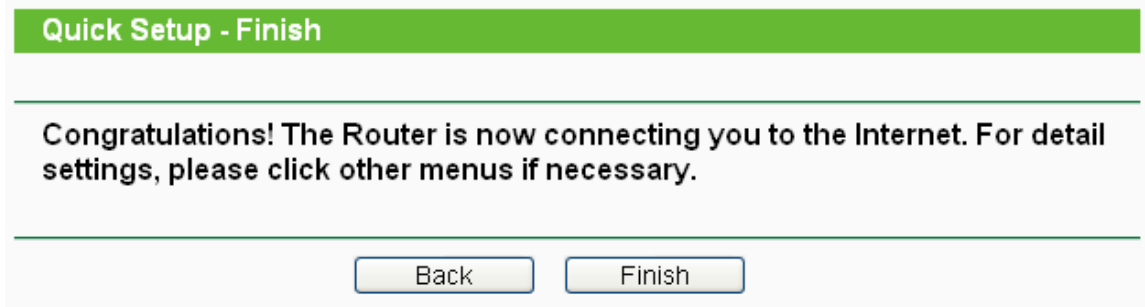


Figure 3-12 Quick Setup – Finish

If there are something changed on the **Wireless** page, you will see the **Finish** page as shown in Figure 3-13. Click the **Reboot** button to make your wireless configuration to take effect and finish the **Quick Setup**.

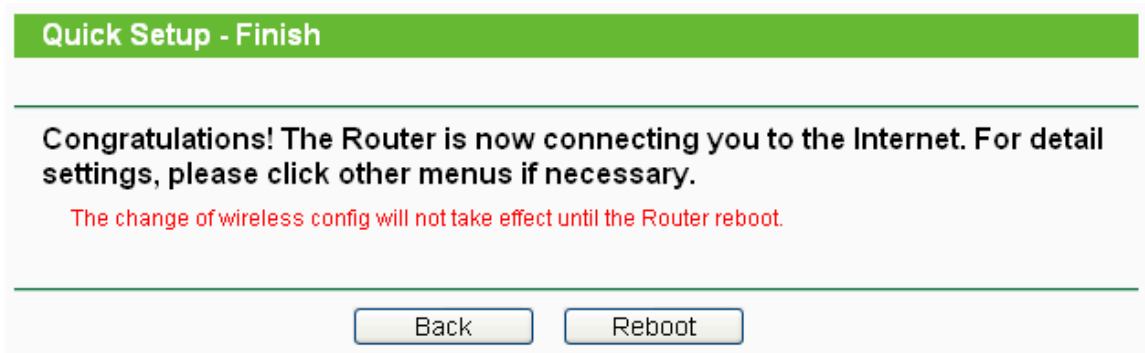


Figure 3-13 Quick Setup – Finish

After the rebooting, please check whether you can access the Internet or not in the [4.2 Status](#) page.

 **Note:**

The configuration for **3G Only**, **WAN Preferred** and **WAN Only** mode is very similar to **3G Preferred** mode. Here we just take **3G Preferred** for example.

Chapter 4. Configuring the Router

This chapter will show each Web page's key functions and the configuration way.

4.1 Login

After your successful login, you will see the fifteen main menus on the left of the Web-based utility. On the right, there are the corresponding explanations and instructions.



Status
Quick Setup
QSS
Network
Wireless
DHCP
Forwarding
Security
Parental Control
Access Control
Static Routing
Bandwidth Control
IP & MAC Binding
Dynamic DNS
System Tools

The detailed explanations for each Web page's key function are listed below.

4.2 Status

The Status page provides the current status information about the Router. All information is read-only.

Status

Firmware Version: 3.11.0 Build 100322 Rel.54548n
Hardware Version: MR3220 v1 00000000

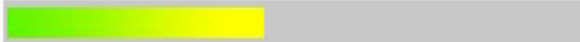
LAN

MAC Address: 00-0A-EB-13-09-19
IP Address: 192.168.1.1
Subnet Mask: 255.255.255.0

Wireless

Wireless Radio: Enable
Name (SSID): TP-LINK_130919
Channel: Auto (Current channel 5)
Mode: 11bgn mixed
Channel Width: Automatic
Max Tx Rate: 150Mbps
MAC Address: 00-0A-EB-13-09-19

3G

3G USB Modem: E220
Signal Strength:  45%
IP Address: 172.22.135.192
Subnet Mask: 255.255.255.255
Default Gateway: 172.22.135.192
DNS Server: 202.106.195.68 , 202.106.46.151
Online Time: 0 day(s) 00:19:52 [Disconnect](#)

Traffic Statistics

	Received	Sent
Bytes:	0	0
Packets:	0	0

System Up Time: 0 days 01:05:46

[Refresh](#)

Figure 4-1 Router Status

4.3 Quick Setup

Please refer to [Section 3.2: "Quick Installation Guide."](#)

4.4 QSS

This section will guide you add a new wireless device to an existing network quickly by **QSS (Quick Secure Setup)** function.

a). Choose menu "**QSS**", you will see the next screen (shown in Figure 4-2).

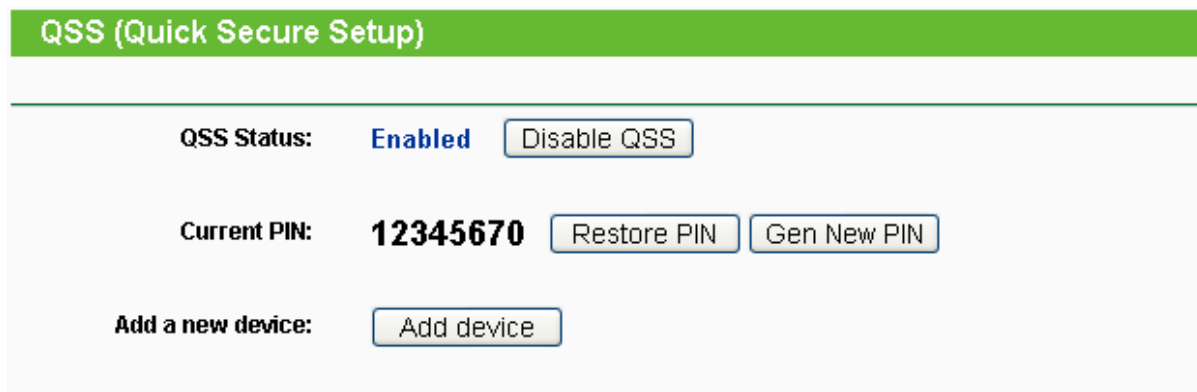


Figure 4-2 QSS

- **QSS Status** - Enable or disable the QSS function here.
- **Current PIN** - The current value of the Router's PIN displayed here. The default PIN of the Router can be found in the label or User Guide.
- **Restore PIN** - Restore the PIN of the Router to its default.
- **Gen New PIN** - Click this button, and then you can get a new random value for the Router's PIN. You can ensure the network security by generating a new PIN.
- **Add device** - You can add the new device to the existing network manually by clicking this button.

b). To add a new device:

If the wireless adapter supports Wi-Fi Protected Setup (WPS), you can establish a wireless connection between wireless adapter and Router using either Push Button Configuration (PBC) method or PIN method.

 **Note:**

To build a successful connection by QSS, you should also do the corresponding configuration of the new device for QSS function meanwhile.

For the configuration of the new device, here takes the Wireless Adapter of our company for example.

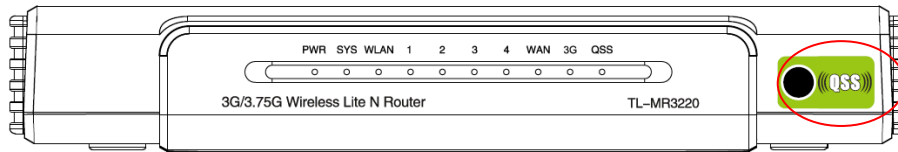
I. By PBC

If the wireless adapter supports Wi-Fi Protected Setup and the Push Button Configuration (PBC)

method, you can add it to the network by PBC with the following two methods.

Method One:

Step 1: Press the QSS button on the front panel of the Router.



Step 2: Press and hold the QSS button of the adapter directly for 2 or 3 seconds.



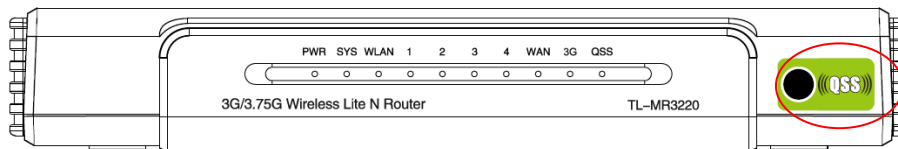
Step 3: Wait for a while until the next screen appears. Click **Finish** to complete the QSS configuration.



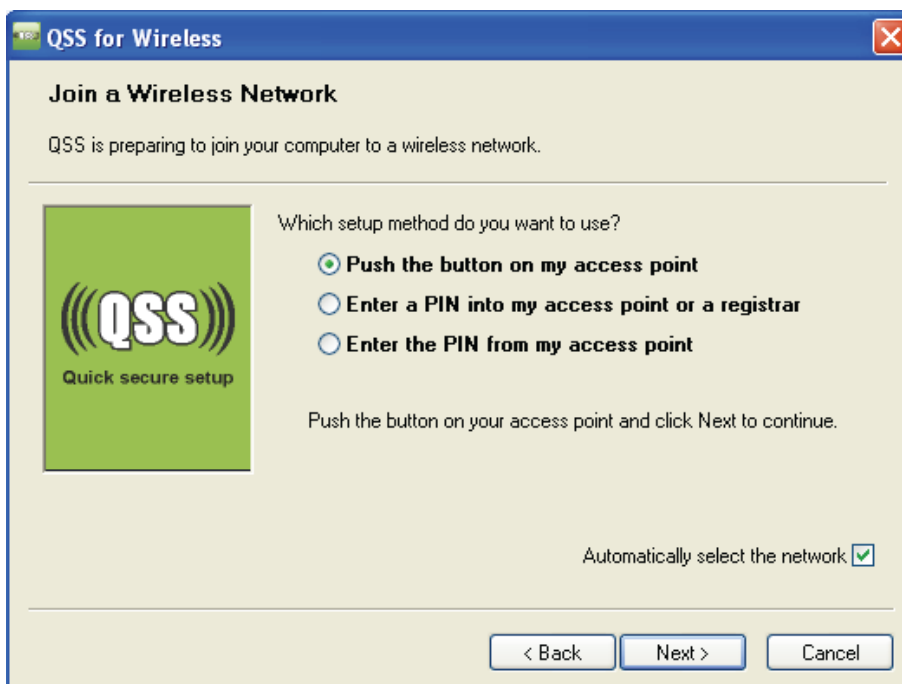
The QSS Configuration Screen of Wireless Adapter

Method Two:

Step 1: Press the QSS button on the front panel of the Router.

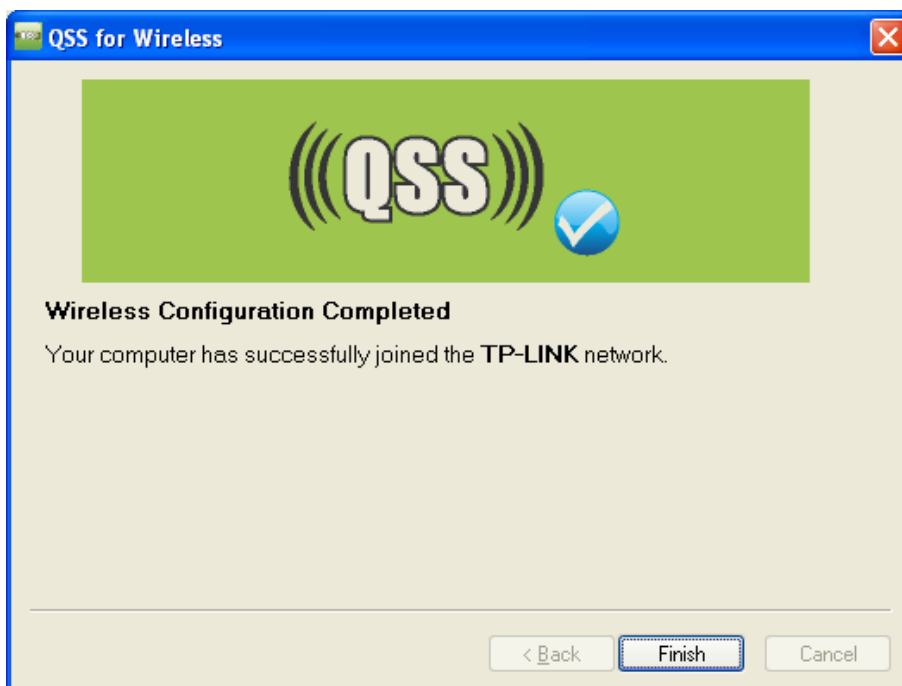


Step 2: For the configuration of the wireless adapter, please choose **Push the button on my access point** in the configuration utility of the QSS as below, and click **Next**.



The QSS Configuration Screen of Wireless Adapter

Step 3: Wait for a while until the next screen appears. Click **Finish** to complete the QSS configuration.



The QSS Configuration Screen of Wireless Adapter

Method Three:

Step 1: Keep the default QSS Status as **Enabled** and click the **Add device** button in Figure 4-2, then the following screen will appear.

Add A New Device

Enter the new device's PIN.

PIN:

Press the button of the new device in two minutes.

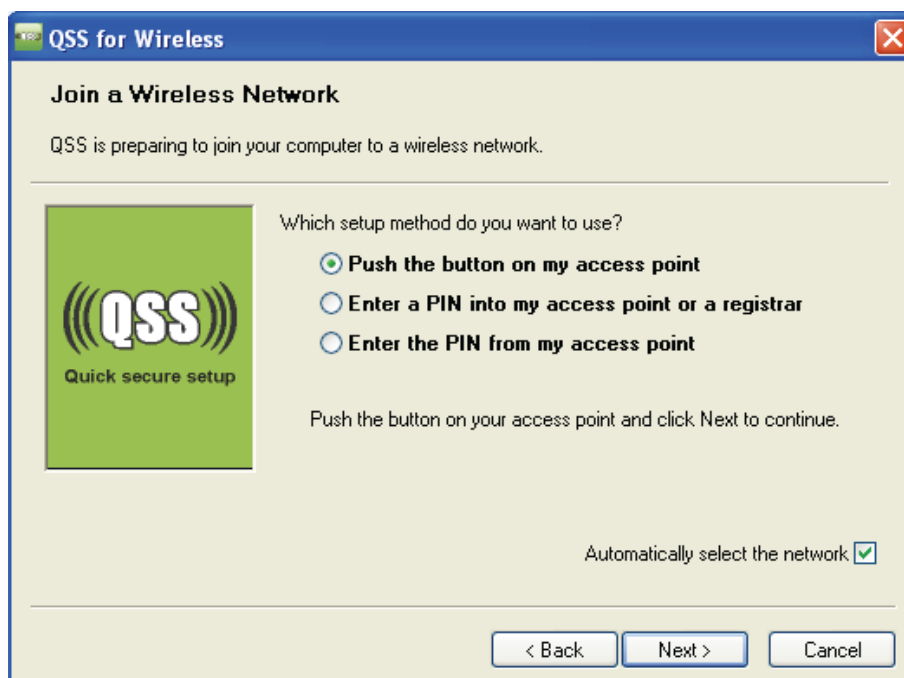
Back

Connect

Figure 4-3 Add A New Device

Step 2: Choose **Press the button of the new device in two minutes** and click **Connect**.

Step 3: For the configuration of the wireless adapter, please choose **Push the button on my access point** in the configuration utility of the QSS as below, and click **Next**.



The QSS Configuration Screen of Wireless Adapter

Step 4: Wait for a while until the next screen appears. Click **Finish** to complete the QSS configuration.



The QSS Configuration Screen of Wireless Adapter

II. By PIN

If the new device supports Wi-Fi Protected Setup and the PIN method, you can add it to the network by PIN with the following two methods.

Method One: Enter the PIN into my Router

Step 1: Keep the default QSS Status as **Enabled** and click the **Add device** button in Figure 4-2, then the following screen will appear.

Add A New Device

Enter the new device's PIN.
 PIN:

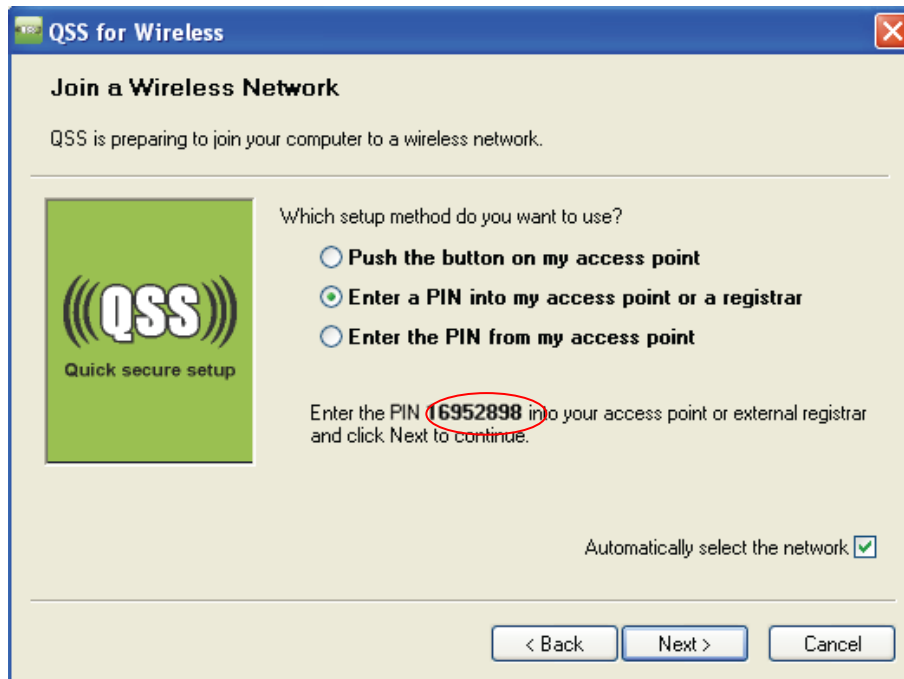
Press the button of the new device in two minutes.

Step 2: Choose **Enter the new device's PIN** and enter the PIN code of the wireless adapter in the field behind **PIN** in the above figure. Then click **Connect**.

Note:

The PIN code of the adapter is always displayed on the QSS configuration screen

Step 3: For the configuration of the wireless adapter, please choose **Enter a PIN into my access point or a registrar** in the configuration utility of the QSS as below, and click **Next**.



The QSS Configuration Screen of Wireless Adapter

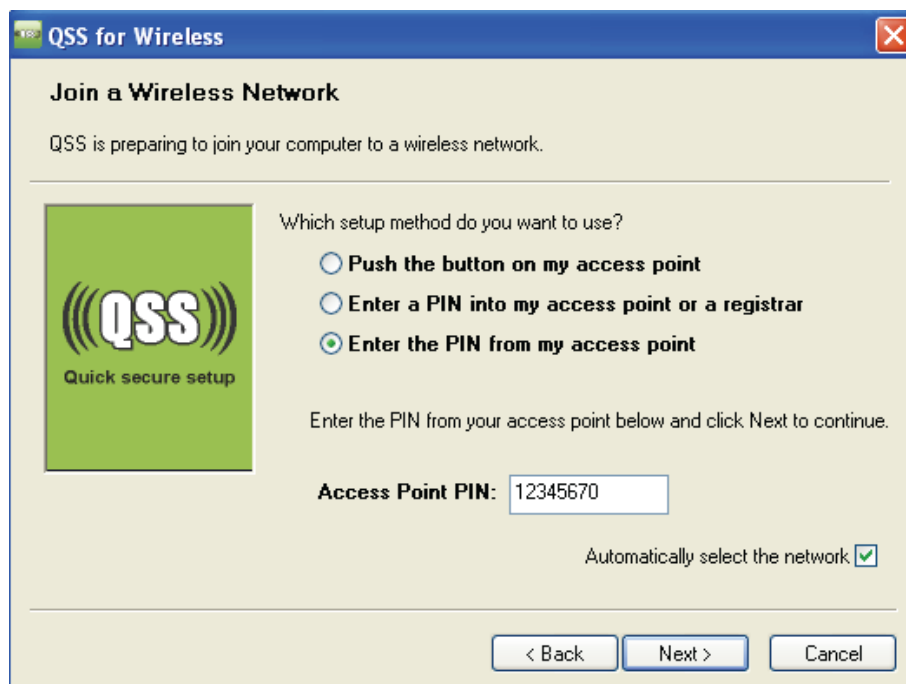
Note:

In this example, the default PIN code of this adapter is 16952898 as the above figure shown.

Method Two: Enter the PIN from my Router

Step 1: Get the Current PIN code of the Router in Figure 4-2 (each Router has its unique PIN code. Here takes the PIN code 12345670 of this Router for example).

Step 2: For the configuration of the wireless adapter, please choose **Enter a PIN from my access point** in the configuration utility of the QSS as below, and enter the PIN code of the Router into the field behind **Access Point PIN**. Then click **Next**.

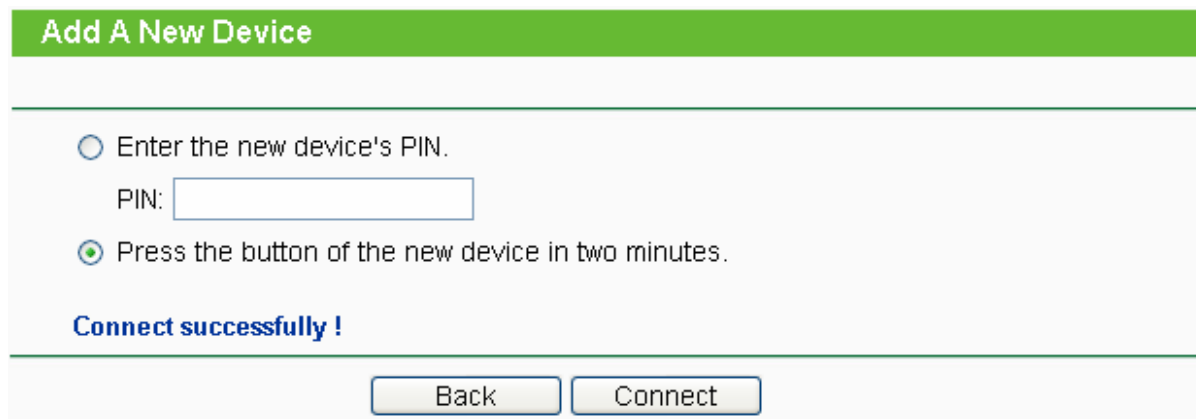


The QSS Configuration Screen of Wireless Adapter

Note:

The default PIN code of the Router can be found in its label or the QSS configuration screen as Figure 4-2.

- c). You will see the following screen when the new device successfully connected to the network.



Add A New Device

Enter the new device's PIN.
PIN:

Press the button of the new device in two minutes.

Connect successfully !

Note:

- 1) The status LED on the Router will light green all the time if the device has been successfully added to the network.
- 2) The QSS function cannot be configured if the Wireless Function of the Router is disabled. Please make sure the Wireless Function is enabled before configuring the QSS.

4.5 Network

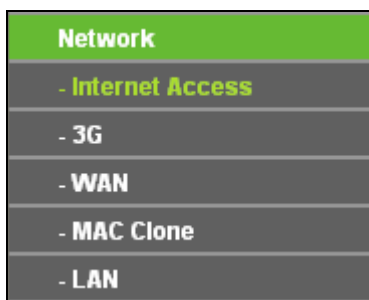


Figure 4-4 the Network menu

There are five submenus under the Network menu (shown in Figure 4-4): **Internet Access**, **3G**, **WAN**, **MAC Clone** and **LAN**. Click any of them, and you will be able to configure the corresponding function.

4.5.1 Internet Access

Choose menu "**Network**→**Internet Access**", you can configure the access mode on the screen below. The router is designed to work with either WAN port or 3G USB modem, and supports automatically take over back up with 3G access as Ethernet WAN failover.

Internet Access

The router provides four Internet access mode for you to choose:

- 3G Preferred** - Use 3G as the primary access, WAN as a backup.
- 3G Only** - Only use 3G as the access to the Internet.
- WAN Preferred** - Use WAN as the primary access, 3G as a backup.
- WAN Only** - Only use WAN as the access to the Internet.

Save

Figure 4-5 Internet Access Mode

➤ **3G Preferred**

In this mode, the router will try 3G access first;

When 3G access fails and WAN access is valid, or when no 3G USB modem is inserted, the router would switch to WAN access;

When the router succeeds to connect to the 3G network, the router would stop the WAN connection and switch back to 3G access immediately.

➤ **3G Only**

In this mode, the router will try 3G access only. WAN access is disabled.

➤ **WAN Preferred**

In this mode, the router will try WAN access first;

When the WAN access fails, and 3G access is valid, the router would switch to 3G access;

When the router succeeds to connect to the WAN network, the router would stop the 3G connection and switch back to WAN access immediately.

➤ **WAN Only**

In this mode, the router will try WAN access only. 3G access is disabled.

Click the **Save** button to save your settings.

👉 **Note:**

- 1) In 3G preferred and WAN preferred modes, until 2010-5-18, the failover/backup function only works between 3G link and PPPoE / Dynamic IP / Static IP.
- 2) The failover/backup feature between 3G link and BigPond Cable / PPTP / L2TP will be available in the near future. Please visit our website to download the latest firmware:
<http://www.tp-link.com/support/download.asp>
- 3) If you are using the **3G Preferred** or **WAN Preferred**, the router would connect, disconnect or switch the current access automatically. The Connect/Disconnect button (on 3G, PPPoE, PPTP, L2TP) and some related parameters could not be set manually.

4.5.2 3G

Choose menu “**Network→3G**”, you can configure parameters for 3G function on the screen below. To use the 3G function, you should first insert your USB modem on the USB port of the Router. There are already much 3G USB modem information embedded in the router. The USB modem parameters will be set automatically if the card is supported by the Router. Take E220 for example. If your USB modem inserted is supported by the Router, then your modem model will be shown in the 3G USB Modem field as shown in Figure 4-6. Otherwise, “Unknown Modem” will be shown instead as shown in Figure 4-7. Please visit our website <http://www.tp-link.com> to get the latest USB modems compatibility list.

 **Note:**

3G settings are unavailable when the Internet Access mode is set to WAN Only mode. Please change settings on [Internet Access](#) if you want to use 3G.

3G

3G USB Modem: E220

If your location or ISP is not listed, or the default Dial number / APN is not the latest one, please enable **Set the Dial Number and APN manually** and fill in the right ones.

Location: Australia

Mobile ISP: Bigpond Default Dial Number: "*99**#" APN: "telstra.bigpond"

 Set the Dial Number and APN manually

Dial Number: *99**#

APN: telstra.bigpond

Username: (optional)

Password: (optional)

 Disconnected

The current **Internet Access** is **3G preferred**. The Connection Mode and Max Idle Time could not be set manually.

Connection Mode: Connect on Demand Connect Automatically Connect Manually

Max Idle Time: 15 minutes (0 means remain active at all times)

MTU Size (in bytes): 1480 (The default is 1480, do not change unless necessary)

 Use the following DNS Servers

Primary DNS: 0.0.0.0

Secondary DNS: 0.0.0.0 (Optional)

Figure 4-6 3G

3G

3G USB Modem: Unknown Modem. Please configure the modem on [3G USB Modem Settings](#) manually.

Figure 4-7

- **Location** - Please select the location where you're enjoying the 3G card.
- **Mobile ISP** - Please select the ISP (Internet Service Provider) you apply to for 3G service. The router will show the default Dial Number and APN of that ISP.

- **Set the Dial Number and APN manually** - Check the box and fill the Dial Number and APN blanks below if your ISP is not listed in the **Mobile ISP** list or the default values are not the latest ones.
- **Dial Number** - Enter the Dial Number provided by your ISP.
- **APN** - Enter the APN (Access Point Name) provided by your ISP.
- **Username/Password** - Enter the Username and Password provided by your ISP. These fields are case-sensitive.

Click the **Connect** button to connect to your 3G network. Once the connection is successful, you will find the 3G screen is similar to Figure 4-8. Click menu **Status** and you will see the 3G status is similar to Figure 4-9.

3G

3G USB Modem: E220

Please select your present location and ISP to obtain the Dial Number and APN. If your Location or ISP is not listed, please enable **Use the following Dial Number and APN** and fill in the following blanks.

Location: Australia

Mobile ISP: Telstra

Username: (optional)

Password: (optional)

 Set the Dial Number and APN manually

Dial Number: *99#

APN: 3gnet

Connect

Disconnect

Connected

Connection Mode: Connect on Demand Connect Automatically Connect Manually

Max Idle Time: 15 minutes (0 means remain active at all times)

MTU Size (in bytes): 1480 (The default is 1480, do not change unless necessary)

 Use the following DNS Servers

Primary DNS: 202.106.195.68

Secondary DNS: 202.106.46.151 (Optional)

Save

Modem Settings

Figure 4-8

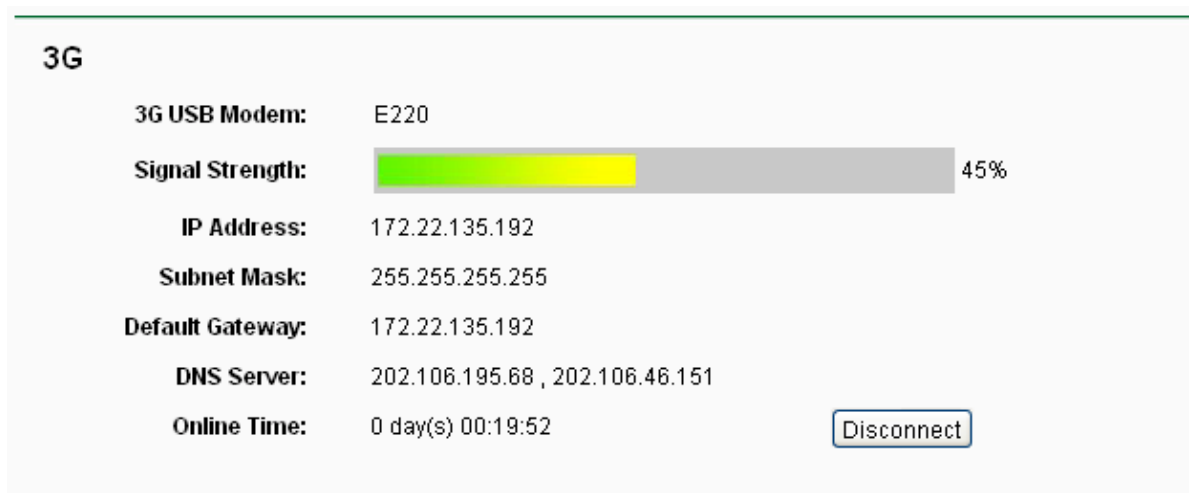


Figure 4-9

- **Connect on Demand** - You can configure the Router to disconnect your Internet connection after a specified period of the Internet connectivity (**Max Idle Time**). If your Internet connection has been terminated due to inactivity, **Connect on Demand** enables the Router to automatically re-establish your connection as soon as you attempt to access the Internet again. If you wish to activate **Connect on Demand**, click the radio button. If you want your Internet connection to remain active at all times, enter **0** in the **Max Idle Time** field. Otherwise, enter the number of minutes you want to have elapsed before your Internet connection terminates.

 **Note:**

Sometimes the connection cannot be disconnected although you specify a time to **Max Idle Time** because some applications visit the Internet continually in the background.

- **Connect Automatically** - Connect automatically after the Router is disconnected. To use this option, click the radio button.
- **Connect Manually** - You can configure the Router to make it connect or disconnect manually. After a specified period of inactivity (**Max Idle Time**), the Router will disconnect your Internet connection, and not be able to re-establish your connection automatically as soon as you attempt to access the Internet again. To use this option, click the radio button. If you want your Internet connection to remain active at all times, enter **0** in the **Max Idle Time** field. Otherwise, enter the number in minutes that you wish to have the Internet connecting last unless a new link requested.

 **Note:**

Sometimes the connection cannot be disconnected although you specify a time to **Max Idle Time** because some applications visit the Internet continually in the background.

- **MTU Size** - The default MTU (Maximum Transmission Unit) size is 1480 bytes, which is usually fine. For some ISPs, you need modify the MTU. This should not be done unless you are sure it is necessary for your ISP.
- **Use the following DNS Servers** - If your ISP specifies a DNS server IP address for you, click the checkbox, and fill the **Primary DNS** and **Secondary DNS** blanks below. The Secondary DNS is optional. Otherwise, the DNS servers will be assigned dynamically from ISP.
- **Primary DNS** - Enter the DNS IP address in dotted-decimal notation provided by your ISP.
- **Secondary DNS** - (Optional) Enter another DNS IP address in dotted-decimal notation provided by your ISP.

Click the **Save** button to save your settings.

Click the **Modem Settings** button if your 3G USB Modem is not supported by the Router, and then you will see the screen as shown in Figure 4-10. Parameters of your USB modem can be configured on this page.

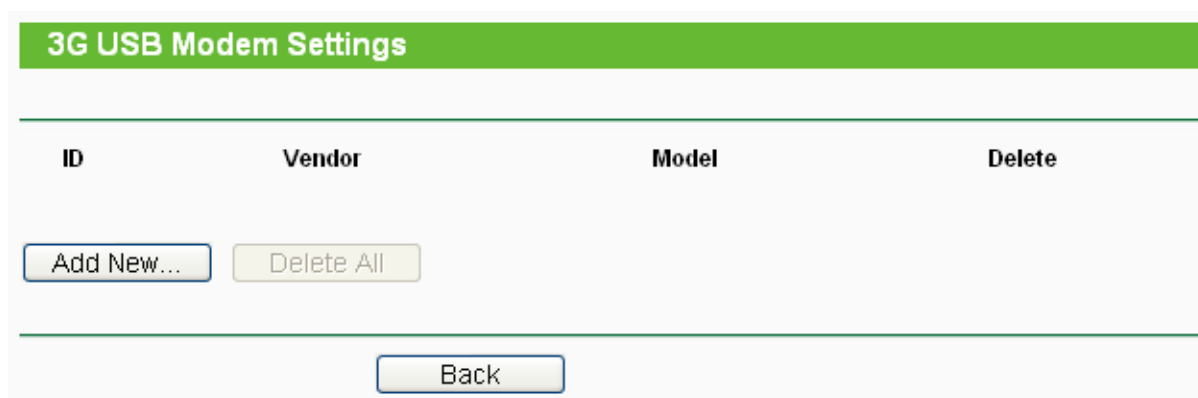


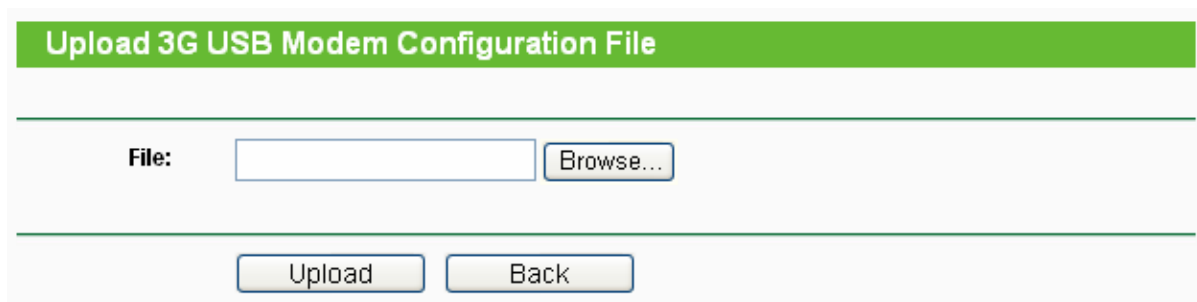
Figure 4-10 3G USB Modem Settings

There are already much 3G USB modem information embedded in the router. The USB modem parameters will be set automatically if the card is supported by the router. But when the router finds the card you just insert "unknown" to it, it will prompt you to set these parameters. The router can identify your "unknown" card if the correct parameters are in the list. We suggest you to do the "3G USB Modem Setting" only in such circumstance.

To add 3G USB Modem entries, follow the steps below.

1. Download a most recent 3G USB modem configuration file from our website (<http://www.tp-link.com>).
2. Click the **Add New...** button in Figure 4-10, and then you will see Figure 4-11.
3. Click **Browse...** to select the path name where you save the downloaded file on the computer into the File blank.

4. Click the **Upload** button to upload the configuration.



Upload 3G USB Modem Configuration File

File: Browse...

Upload Back

Figure 4-11 Add or Modify a 3G USB Modem Entry

4.5.3 WAN

Choose menu “**Network→WAN**”, you can configure the IP parameters of the WAN on the screen below.

 **Note:**

WAN settings are unavailable when the Internet Access mode is set to 3G Only mode. Please change settings on [4.5.1 Internet Access](#) if you want to use WAN.

1. If your ISP provides the DHCP service, please choose **Dynamic IP** type, and the Router will automatically get IP parameters from your ISP. You can see the page as follows (Figure 4-12):

WAN

WAN Connection Type:	Dynamic IP <input type="button" value="Detect"/>
IP Address:	0.0.0.0
Subnet Mask:	0.0.0.0
Default Gateway:	0.0.0.0
	<input type="button" value="Renew"/> <input type="button" value="Release"/>
MTU Size (in bytes):	<input type="text" value="1500"/> (The default is 1500, do not change unless necessary.)
<input type="checkbox"/>	Use These DNS Servers
Primary DNS:	<input type="text" value="0.0.0.0"/>
Secondary DNS:	<input type="text" value="0.0.0.0"/> (Optional)
Host Name:	<input type="text" value="TL-MR3220"/>
<input type="checkbox"/>	Get IP with Unicast DHCP (It is usually not required.)
<input type="button" value="Save"/>	

Figure 4-12 WAN - Dynamic IP

This page displays the WAN IP parameters assigned dynamically by your ISP, including IP address, Subnet Mask, Default Gateway, etc. Click the **Renew** button to renew the IP parameters from your ISP. Click the **Release** button to release the IP parameters.

- **MTU Size** - The normal **MTU** (Maximum Transmission Unit) value for most Ethernet networks is 1500 Bytes. It is not recommended that you change the default **MTU Size** unless required by your ISP.
- **Use These DNS Servers** - If your ISP gives you one or two DNS addresses, select **Use These DNS Servers** and enter the primary and secondary addresses into the correct fields. Otherwise, the DNS servers will be assigned dynamically from your ISP.

 **Note:**

If you get Address not found error when you access a Web site, it is likely that your DNS servers are set up improperly. You should contact your ISP to get DNS server addresses.

- **Host Name** - This option specifies the Host Name of the Router.
- **Get IP with Unicast DHCP** - A few ISPs' DHCP servers do not support the broadcast

applications. If you cannot get the IP Address normally, you can choose this option. (It is rarely required.)

- If your ISP provides a static or fixed IP Address, Subnet Mask, Gateway and DNS setting, select **Static IP**. The Static IP settings page will appear, shown in Figure 4-13.

WAN

WAN Connection Type: Static IP Detect

IP Address:

Subnet Mask:

Default Gateway: (Optional)

MTU Size (in bytes): (The default is 1500, do not change unless necessary.)

Primary DNS: (Optional)

Secondary DNS: (Optional)

Save

Figure 4-13 WAN - Static IP

- **IP Address** - Enter the IP address in dotted-decimal notation provided by your ISP.
 - **Subnet Mask** - Enter the subnet Mask in dotted-decimal notation provided by your ISP, usually is 255.255.255.0.
 - **Default Gateway** - (Optional) Enter the gateway IP address in dotted-decimal notation provided by your ISP.
 - **MTU Size** - The normal **MTU** (Maximum Transmission Unit) value for most Ethernet networks is 1500 Bytes. It is not recommended that you change the default **MTU Size** unless required by your ISP.
 - **Primary/Secondary DNS** - (Optional) Enter one or two DNS addresses in dotted-decimal notation provided by your ISP.
- If your ISP provides a PPPoE connection, select **PPPoE** option. And you should enter the following parameters (Figure 4-14):

WAN

WAN Connection Type:

PPPoE Connection:

User Name:

Password:

Secondary Connection: Disabled Dynamic IP Static IP

Wan Connection Mode: Connect on Demand
 Max Idle Time: minutes (0 means remain active at all times.)

Connect Automatically

Time-based Connecting
 Period of Time: from : (HH:MM) to : (HH:MM)

Connect Manually
 Max Idle Time: minutes (0 means remain active at all times.)

Disconnected!

Figure 4-14 WAN - PPPoE

- **User Name/Password** - Enter the User Name and Password provided by your ISP. These fields are case-sensitive.
- **Secondary Connection** - It's available only for PPPoE Connection. If your ISP provides an extra Connection type such as Dynamic/Static IP to connect to a local area network, then you can check the radio button of Dynamic/Static IP to activate this secondary connection.
 - **Disabled** - The Secondary Connection is disabled by default, so there is PPPoE connection only. This is recommended.
 - **Dynamic IP** - You can check this radio button to use Dynamic IP as the secondary connection to connect to the local area network provided by ISP.
 - **Static IP** - You can check this radio button to use Static IP as the secondary connection to connect to the local area network provided by ISP.
- **Connect on Demand** - In this mode, the Internet connection can be terminated automatically after a specified inactivity period (**Max Idle Time**) and **be** re-established when you attempt to access the Internet again. If you want your Internet connection keeps active all the time, please enter "0" in the **Max Idle Time** field. Otherwise, enter the number of minutes you want to have elapsed before your Internet access disconnects.

- **Connect Automatically** - The connection can be re-established automatically when it was down.
- **Time-based Connecting** - The connection will only be established in the period from the start time to the end time (both are in HH:MM format).

 **Note:**

Only when you have configured the system time on **System Tools -> Time** page, will the **Time-based Connecting** function can take effect.

- **Connect Manually** - You can click the **Connect/ Disconnect** button to connect/disconnect immediately. This mode also supports the **Max Idle Time** function as **Connect on Demand** mode. The Internet connection can be disconnected automatically after a specified inactivity period and re-established when you attempt to access the Internet again.

Caution: Sometimes the connection cannot be terminated although you specify a time to Max Idle Time, since some applications are visiting the Internet continually in the background.

If you want to do some advanced configurations, please click the **Advanced** button, and the page shown in Figure 4-15 will then appear:

PPPoE Advanced Settings

MTU Size (in bytes):	<input style="width: 90%;" type="text" value="1480"/>	<small>(The default is 1480, do not change unless necessary.)</small>
Service Name:	<input style="width: 100%;" type="text"/>	
AC Name:	<input style="width: 100%;" type="text"/>	
	<input type="checkbox"/> Use IP address specified by ISP	
ISP Specified IP Address:	<input style="width: 100%;" type="text" value="0.0.0.0"/>	
Detect Online Interval:	<input style="width: 50%;" type="text" value="0"/>	<small>Seconds (0 ~ 120 seconds, the default is 0, 0 means not detecting.)</small>
	<input type="checkbox"/> Use the following DNS Servers	
Primary DNS:	<input style="width: 100%;" type="text" value="0.0.0.0"/>	
Secondary DNS:	<input style="width: 100%;" type="text" value="0.0.0.0"/>	<small>(Optional)</small>

Figure 4-15 PPPoE Advanced Settings

- **MTU Size** - The default MTU size is “1480” bytes, which is usually fine. It is not recommended that you change the default **MTU Size** unless required by your ISP.
- **Service Name/AC Name** - The service name and AC (Access Concentrator) name, which

should not be configured unless you are sure it is necessary for your ISP. In most cases, leaving these fields blank will work.

- **ISP Specified IP Address** - If your ISP does not automatically assign IP addresses to the Router during login, please click **“Use IP address specified by ISP”** check box and enter the IP address provided by your ISP in dotted-decimal notation.
- **Detect Online Interval** - The Router will detect Access Concentrator online at every interval. The default value is “0”. You can input the value between “0”and “120”. The value “0” means no detect.
- **DNS IP address** - If your ISP does not automatically assign DNS addresses to the Router during login, please click **“Use the following DNS servers”** check box and enter the IP address in dotted-decimal notation of your ISP’s primary DNS server. If a secondary DNS server address is available, enter it as well.

Click the **Save** button to save your settings.

4. If your ISP provides BigPond Cable (or Heart Beat Signal) connection, please select **BigPond Cable**. And you should enter the following parameters (Figure 4-16):

WAN

WAN Connection Type:

User Name:

Password:

Auth Server:

Auth Domain:

MTU Size (in bytes): (The default is 1500, do not change unless necessary.)

Connect on Demand
 Max Idle Time: minutes (0 means remain active at all times.)

Connect Automatically

Connect Manually
 Max Idle Time: minutes (0 means remain active at all times.)

Disconnected!

Figure 4-16

- **User Name/Password** - Enter the User Name and Password provided by your ISP. These fields are case-sensitive.
- **Auth Server** - Enter the authenticating server IP address or host name.
- **Auth Domain** - Type in the domain suffix server name based on your location.

e.g.

NSW / ACT - **nsw.bigpond.net.au**

VIC / TAS / WA / SA / NT - **vic.bigpond.net.au**

QLD - **qld.bigpond.net.au**

- **MTU Size** - The normal **MTU** (Maximum Transmission Unit) value for most Ethernet networks is 1500 Bytes. It is not recommended that you change the default **MTU Size** unless required by your ISP.
- **Connect on Demand** - In this mode, the Internet connection can be terminated automatically after a specified inactivity period (**Max Idle Time**) and be re-established when you attempt to access the Internet again. If you want your Internet connection keeps active all the time, please enter "0" in the **Max Idle Time** field. Otherwise, enter the number of minutes you want to have elapsed before your Internet access disconnects.
- **Connect Automatically** - The connection can be re-established automatically when it was down.
- **Connect Manually** - You can click the **Connect/Disconnect** button to connect/disconnect immediately. This mode also supports the **Max Idle Time** function as **Connect on Demand** mode. The Internet connection can be disconnected automatically after a specified inactivity period and re-established when you attempt to access the Internet again.

Click the **Connect** button to connect immediately. Click the **Disconnect** button to disconnect immediately.

Caution: Sometimes the connection cannot be terminated although you specify a time to Max Idle Time because some applications are visiting the Internet continually in the background.

Click the **Save** button to save your settings.

5. If your ISP provides L2TP connection, please select **L2TP** option. And you should enter the following parameters (Figure 4-17):

WAN

WAN Connection Type:	<input type="text" value="L2TP"/>
User Name:	<input type="text" value="username"/>
Password:	<input type="password" value="••••••••"/>
	<input type="button" value="Connect"/> <input type="button" value="Disconnect"/> Disconnected!
	<input checked="" type="radio"/> Dynamic IP <input type="radio"/> Static IP
Server IP Address/Name:	<input type="text"/>
IP Address:	0.0.0.0
Subnet Mask:	0.0.0.0
Gateway:	0.0.0.0
DNS:	0.0.0.0 , 0.0.0.0
Internet IP Address:	0.0.0.0
Internet DNS:	0.0.0.0 , 0.0.0.0
MTU Size (in bytes):	<input type="text" value="1460"/> (The default is 1460, do not change unless necessary.)
Max Idle Time:	<input type="text" value="15"/> minutes (0 means remain active at all times.)
WAN Connection Mode:	<input checked="" type="radio"/> Connect on Demand <input type="radio"/> Connect Automatically <input type="radio"/> Connect Manually
	<input type="button" value="Save"/>

Figure 4-17 L2TP Settings

- **User Name/Password** - Enter the User Name and Password provided by your ISP. These fields are case-sensitive.
- **Dynamic IP/ Static IP** - Choose either as you are given by your ISP. Click the **Connect** button to connect immediately. Click the **Disconnect** button to disconnect immediately.
- **Connect on Demand** - You can configure the Router to disconnect from your Internet connection after a specified period of inactivity (**Max Idle Time**). If your Internet connection has been terminated due to inactivity, **Connect on Demand** enables the Router to automatically re-establish your connection as soon as you attempt to access the Internet again. If you wish to activate **Connect on Demand**, click the radio button. If you want your Internet connection to remain active at all times, enter 0 in the **Max Idle Time** field. Otherwise, enter the number of minutes you want to have elapsed before your Internet connection terminates.

- **Connect Automatically** - Connect automatically after the Router is disconnected. To use this option, click the radio button.
- **Connect Manually** - You can configure the Router to make it connect or disconnect manually. After a specified period of inactivity (**Max Idle Time**), the Router will disconnect from your Internet connection, and you will not be able to re-establish your connection automatically as soon as you attempt to access the Internet again. To use this option, click the radio button. If you want your Internet connection to remain active at all times, enter "0" in the **Max Idle Time** field. Otherwise, enter the number in minutes that you wish to have the Internet connecting last unless a new link is requested.

Caution: Sometimes the connection cannot be disconnected although you specify a time to **Max Idle Time**, since some applications is visiting the Internet continually in the background.

6. If your ISP provides PPTP connection, please select **PPTP** option. And you should enter the following parameters (Figure 4-18):

WAN

WAN Connection Type:	<input type="text" value="PPTP"/>
User Name:	<input type="text" value="username"/>
Password:	<input type="password" value="••••••••"/>
	<input type="button" value="Connect"/> <input type="button" value="Disconnect"/> Disconnected!
	<input checked="" type="radio"/> Dynamic IP <input type="radio"/> Static IP
Server IP Address/Name:	<input type="text"/>
IP Address:	0.0.0.0
Subnet Mask:	0.0.0.0
Gateway:	0.0.0.0
DNS:	0.0.0.0 , 0.0.0.0
Internet IP Address:	0.0.0.0
Internet DNS:	0.0.0.0 , 0.0.0.0
MTU Size (in bytes):	<input type="text" value="1420"/> (The default is 1420, do not change unless necessary.)
Max Idle Time:	<input type="text" value="15"/> minutes (0 means remain active at all times.)
WAN Connection Mode:	<input checked="" type="radio"/> Connect on Demand <input type="radio"/> Connect Automatically <input type="radio"/> Connect Manually
	<input type="button" value="Save"/>

Figure 4-18 PPTP Settings

- **User Name/Password** - Enter the User Name and Password provided by your ISP. These fields are case-sensitive.
- **Dynamic IP/ Static IP** - Choose either as you are given by your ISP and enter the ISP's IP address or the domain name.

If you choose static IP and enter the domain name, you should also enter the DNS assigned by your ISP. And click the **Save** button.

Click the **Connect** button to connect immediately. Click the **Disconnect** button to disconnect immediately.

- **Connect on Demand** - You can configure the Router to disconnect from your Internet connection after a specified period of inactivity (**Max Idle Time**). If your Internet connection

has been terminated due to inactivity, **Connect on Demand** enables the Router to automatically re-establish your connection as soon as you attempt to access the Internet again. If you wish to activate **Connect on Demand**, click the radio button. If you want your Internet connection to remain active at all times, enter 0 in the **Max Idle Time** field. Otherwise, enter the number of minutes you want to have elapsed before your Internet connection terminates.

- **Connect Automatically** - Connect automatically after the Router is disconnected. To use this option, click the radio button.
- **Connect Manually** - You can configure the Router to make it connect or disconnect manually. After a specified period of inactivity (**Max Idle Time**), the Router will disconnect from your Internet connection, and you will not be able to re-establish your connection automatically as soon as you attempt to access the Internet again. To use this option, click the radio button. If you want your Internet connection to remain active at all times, enter "0" in the **Max Idle Time** field. Otherwise, enter the number in minutes that you wish to have the Internet connecting last unless a new link is requested.

Caution: Sometimes the connection cannot be disconnected although you specify a time to Max Idle Time, since some applications are visiting the Internet continually in the background.

 **Note:**

If you don't know how to choose the appropriate connection type, click the **Detect** button to allow the Router to automatically search your Internet connection for servers and protocols. The connection type will be reported when an active Internet service is successfully detected by the Router. This report is for your reference only. To make sure the connection type your ISP provides, please refer to the ISP. The various types of Internet connections that the Router can detect are as follows:

- **PPPoE** - Connections which use PPPoE that requires a user name and password.
- **Dynamic IP** - Connections which use dynamic IP address assignment.
- **Static IP** - Connections which use static IP address assignment.

The Router can not detect PPTP/L2TP/BigPond connections with your ISP. If your ISP uses one of these protocols, then you must configure your connection manually.

4.5.4 MAC Clone

Choose menu "**Network**→**MAC Clone**", you can configure the MAC address of the WAN on the screen below, Figure 4-19:

Figure 4-19 MAC Address Clone

Some ISPs require that you register the MAC Address of your adapter. Changes are rarely needed here.

- **WAN MAC Address** - This field displays the current MAC address of the WAN port. If your ISP requires you to register the MAC address, please enter the correct MAC address into this field in XX-XX-XX-XX-XX-XX format(X is any hexadecimal digit).
- **Your PC's MAC Address** - This field displays the MAC address of the PC that is managing the Router. If the MAC address is required, you can click the **Clone MAC Address To** button and this MAC address will fill in the **WAN MAC Address** field.

Click **Restore Factory MAC** to restore the MAC address of WAN port to the factory default value.

Click the **Save** button to save your settings.

 **Note:**

Only the PC on your LAN can use the **MAC Address Clone** function.

4.5.5 LAN

Choose menu “**Network**→**LAN**”, you can configure the IP parameters of the LAN on the screen as below.

Figure 4-20 LAN

- **MAC Address** - The physical address of the Router, as seen from the LAN. The value can't be changed.
- **IP Address** - Enter the IP address of your Router or reset it in dotted-decimal notation

(factory default: 192.168.1.1).

- **Subnet Mask** - An address code that determines the size of the network. Normally use 255.255.255.0 as the subnet mask.

 **Note:**

- 1) If you change the IP Address of LAN, you must use the new IP Address to login the Router.
- 2) If the new LAN IP Address you set is not in the same subnet, the IP Address pool of the DHCP server will change accordingly at the same time, while the Virtual Server and DMZ Host will not take effect until they are re-configured.

4.6 Wireless

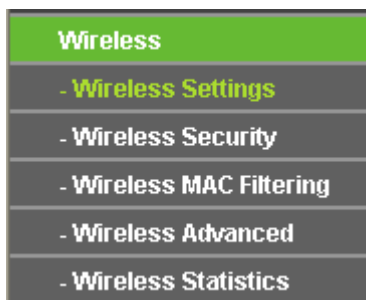


Figure 4-21 Wireless menu

There are five submenus under the Wireless menu (shown in Figure 4-21): **Wireless Settings**, **Wireless Security**, **Wireless MAC Filtering**, **Wireless Advanced** and **Wireless Statistics**. Click any of them, and you will be able to configure the corresponding function.

4.6.1 Wireless Settings

Choose menu “**Wireless**→**Wireless Setting**”, you can configure the basic settings for the wireless network on this page.

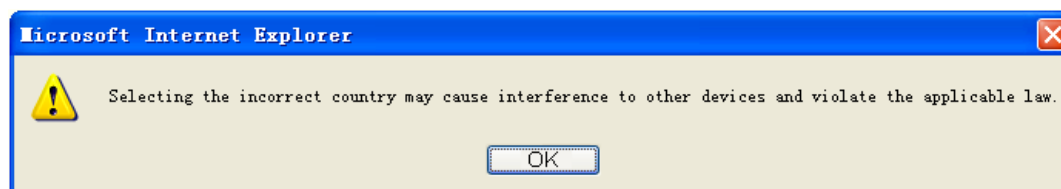
Wireless Settings

SSID:	<input type="text" value="TP-LINK_000004"/>
Region:	<input type="text" value="United States"/>
Warning:	Ensure you select a correct country to conform local law. Incorrect settings may cause interference.
Channel:	<input type="text" value="Auto"/>
Mode:	<input type="text" value="11bgn mixed"/>
Channel Width:	<input type="text" value="Automatic"/>
Max Tx Rate:	<input type="text" value="150Mbps"/>
	<input checked="" type="checkbox"/> Enable Wireless Router Radio
	<input checked="" type="checkbox"/> Enable SSID Broadcast
	<input type="checkbox"/> Enable WDS

Figure 4-22 Wireless Settings

- **SSID** - Enter a value of up to 32 characters. The same name of SSID (Service Set Identification) must be assigned to all wireless devices in your network. Considering your wireless network security, the default SSID is set to be TP-LINK_XXXXXX (XXXXXX indicates the last unique six numbers of each Router's MAC address). This value is case-sensitive. For example, *TEST* is NOT the same as *test*.
- **Region** - Select your region from the pull-down list. This field specifies the region where the wireless function of the Router can be used. It may be illegal to use the wireless function of the Router in a region other than one of those specified in this field. If your country or region is not listed, please contact your local government agency for assistance.

When you select your local region from the pull-down list, click the **Save** button, then the Note Dialog appears. Click **OK**.



Note Dialog

Note:

Limited by local law regulations, version for North America does not have region selection option.

- **Channel** - This field determines which operating frequency will be used. The default channel is set to **Auto**, so the AP will choose the best channel automatically. It is not necessary to change the wireless channel unless you notice interference problems with another nearby access point.

- **Mode** - Select the desired mode. The default setting is 11bgn mixed.

11b only - Select if all of your wireless clients are 802.11b.

11g only - Select if all of your wireless clients are 802.11g.

11n only - Select only if all of your wireless clients are 802.11n.

11bg mixed - Select if you are using both 802.11b and 802.11g wireless clients.

11bgn mixed - Select if you are using a mix of 802.11b, 11g, and 11n wireless clients.

Select the desired wireless mode. When 802.11g mode is selected, only 802.11g wireless stations can connect to the Router. When 802.11n mode is selected, only 802.11n wireless stations can connect to the AP. It is strongly recommended that you set the Mode to **802.11b&g&n**, and all of 802.11b, 802.11g, and 802.11n wireless stations can connect to the Router.

- **Channel width** - Select any channel width from the pull-down list. The default setting is automatic, which can adjust the channel width for your clients automatically.

 **Note:**

If **11b only**, **11g only**, or **11bg mixed** is selected in the **Mode** field, the **Channel Width** selecting field will turn grey and the value will become 20M, which is unable to be changed.

- **Max Tx Rate** - You can limit the maximum tx rate of the Router through this field.
- **Enable Wireless Router Radio** - The wireless radio of this Router can be enabled or disabled to allow wireless stations access.
- **Enable SSID Broadcast** - When wireless clients survey the local area for wireless networks to associate with, they will detect the SSID broadcast by the Router. If you select the **Enable SSID Broadcast** checkbox, the Wireless Router will broadcast its name (SSID) on the air.
- **Enable WDS** - Check this box to enable WDS. With this function, the Router can bridge two or more WLANs. If this checkbox is selected, you will have to set the following parameters as shown below. Make sure the following settings are correct

	<input checked="" type="checkbox"/> Enable WDS
SSID(to be bridged):	<input type="text"/>
BSSID(to be bridged):	<input type="text"/> Example:00-1D-0F-11-22-33
	<input type="button" value="Search"/>
Key type:	None <input type="button" value="v"/>
WEP Index:	1 <input type="button" value="v"/>
Auth type:	open <input type="button" value="v"/>
Password:	<input type="text"/>

- **SSID(to be bridged)** - The SSID of the AP your Router is going to connect to as a client. You can also use the search function to select the SSID to join.
- **BSSID(to be bridged)** - The BSSID of the AP your Router is going to connect to as a client. You can also use the search function to select the BSSID to join.
- **Search** - Click this button, you can search the AP which runs in the current channel.
- **Key type** - This option should be chosen according to the AP's security configuration. It is recommended that the security type is the same as your AP's security type
- **WEP Index** - This option should be chosen if the key type is WEP(ASCII) or WEP(HEX). It indicates the index of the WEP key.
- **Auth Type** - This option should be chosen if the key type is WEP(ASCII) or WEP(HEX). It indicates the authorization type of the Root AP.
- **Password** - If the AP your Router is going to connect needs password, you need to fill the password in this blank.

4.6.2 Wireless Security

Choose menu "**Wireless**→**Wireless Security**", you can configure the security settings of your wireless network.

There are five wireless security modes supported by the Router: WEP (Wired Equivalent Privacy), WPA (Wi-Fi Protected Access), WPA2 (Wi-Fi Protected Access 2), WPA2-PSK (Pre-Shared Key), WPA-PSK (Pre-Shared Key).

Wireless Security

Disable Security

WEP

Type:

WEP Key Format:

Key Selected	WEP Key	Key Type
Key 1: <input checked="" type="radio"/>	<input type="text"/>	Disabled <input type="text"/>
Key 2: <input type="radio"/>	<input type="text"/>	Disabled <input type="text"/>
Key 3: <input type="radio"/>	<input type="text"/>	Disabled <input type="text"/>
Key 4: <input type="radio"/>	<input type="text"/>	Disabled <input type="text"/>

WPA/WPA2

Version:

Encryption:

Radius Server IP:

Radius Port: (1-65535, 0 stands for default port 1812)

Radius Password:

Group Key Update Period: (in second, minimum is 30, 0 means no update)

WPA-PSK/WPA2-PSK

Version:

Encryption:

PSK Password:

(You can enter ASCII characters between 8 and 63 characters or 8 to 64 Hexadecimal characters.)

Group Key Update Period: (in second, minimum is 30, 0 means no update)

Figure 4-23

- **Disable Security** - If you do not want to use wireless security, select this check box, but it's strongly recommended to choose one of the following modes to enable security.
- **WEP** - It is based on the IEEE 802.11 standard. If you select this check box, you will find a notice in red as show in Figure 4-24.

WEP

Type:

WEP Key Format:

Key Selected	WEP Key	Key Type
Key 1: <input checked="" type="radio"/>	<input type="text"/>	Disabled <input type="text"/>
Key 2: <input type="radio"/>	<input type="text"/>	Disabled <input type="text"/>
Key 3: <input type="radio"/>	<input type="text"/>	Disabled <input type="text"/>
Key 4: <input type="radio"/>	<input type="text"/>	Disabled <input type="text"/>

We do not recommend using the WEP encryption if the device operates in 802.11n mode due to the fact that WEP is not supported by Draft 11N specification.

Figure 4-24

- **Type** - you can choose the type for the WEP security on the pull-down list. The default setting is **Automatic**, which can select **Open System** or **Shared Key** authentication type automatically based on the wireless station's capability and request.
- **WEP Key Format** - **Hexadecimal** and **ASCII** formats are provided. **Hexadecimal** format stands for any combination of hexadecimal digits (0-9, a-f, A-F) in the specified length. **ASCII** format stands for any combination of keyboard characters in the specified length.
- **WEP Key**- Select which of the four keys will be used and enter the matching WEP key that you create. Make sure these values are identical on all wireless stations in your network.
- **Key Type** - You can select the WEP key length (64-bit, or 128-bit, or 152-bit.) for encryption. "Disabled" means this WEP key entry is invalid.

64-bit - You can enter 10 hexadecimal digits (any combination of 0-9, a-f, A-F, zero key is not promoted) or 5 ASCII characters.

128-bit - You can enter 26 hexadecimal digits (any combination of 0-9, a-f, A-F, zero key is not promoted) or 13 ASCII characters.

152-bit - You can enter 32 hexadecimal digits (any combination of 0-9, a-f, A-F, zero key is not promoted) or 16 ASCII characters.

 **Note:**

If you do not set the key, the wireless security function is still disabled even if you have selected Shared Key as Authentication Type.

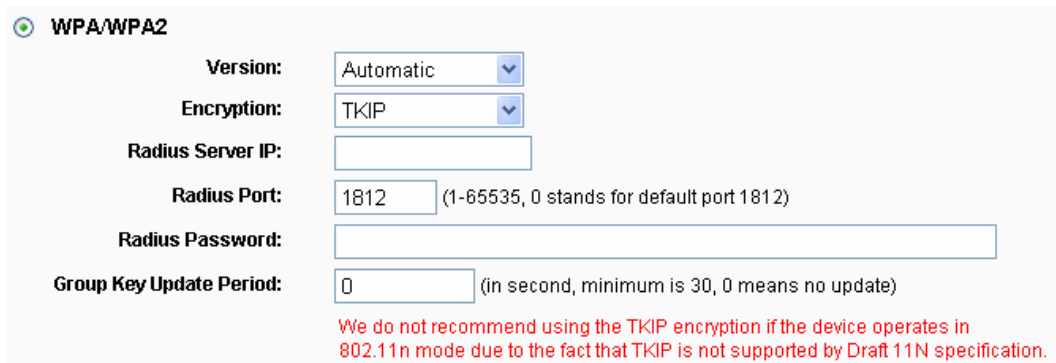
➤ **WPA /WPA2** - It's based on Radius Server.

- **Version** - you can choose the version of the WPA security on the pull-down list. The default setting is **Automatic**, which can select **WPA** (Wi-Fi Protected Access) or **WPA2** (WPA version 2) automatically based on the wireless station's capability and request.

- **Encryption** - You can select either **Automatic**, or **TKIP** or **AES**.

 **Note:**

If you check the **WPA/WPA2** radio button and choose TKIP encryption, you will find a notice in red as shown in Figure 4-25



WPA/WPA2

Version: Automatic

Encryption: TKIP

Radius Server IP:

Radius Port: 1812 (1-65535, 0 stands for default port 1812)

Radius Password:

Group Key Update Period: 0 (in second, minimum is 30, 0 means no update)

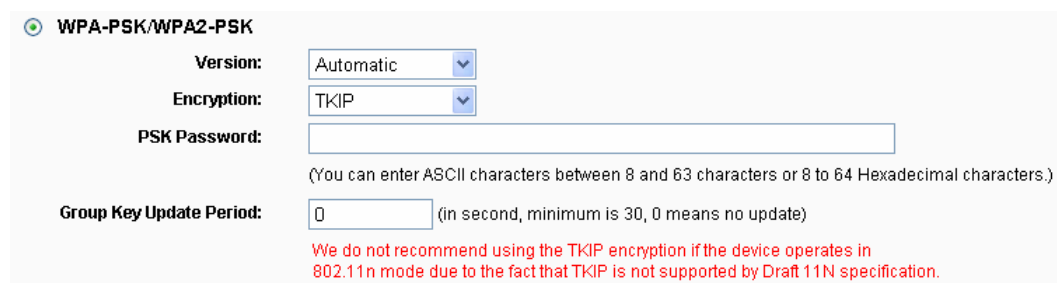
We do not recommend using the TKIP encryption if the device operates in 802.11n mode due to the fact that TKIP is not supported by Draft 11N specification.

Figure 4-25

- **Radius Server IP** - Enter the IP address of the Radius Server.
 - **Radius Port** - Enter the port that radius service used.
 - **Radius Password** - Enter the password for the Radius Server.
 - **Group Key Update Period** - Specify the group key update interval in seconds. The value should be 30 or above. Enter 0 to disable the update.
- **WPA-PSK/WPA2-PSK** - It's the WPA/WPA2 authentication type based on pre-shared passphrase.
- **Version** - you can choose the version of the WPA-PSK security on the drop-down list. The default setting is **Automatic**, which can select **WPA-PSK** (Pre-shared key of WPA) or **WPA2-PSK** (Pre-shared key of WPA) automatically based on the wireless station's capability and request.
 - **Encryption** - When **WPA-PSK** or **WPA** is set as the Authentication Type, you can select either **Automatic**, or **TKIP** or **AES** as Encryption.

 **Note:**

If you check the **WPA-PSK/WPA2-PSK** radio button and choose TKIP encryption, you will find a notice in red as shown in Figure 4-19.



WPA-PSK/WPA2-PSK

Version: Automatic

Encryption: TKIP

PSK Password:
(You can enter ASCII characters between 8 and 63 characters or 8 to 64 Hexadecimal characters.)

Group Key Update Period: 0 (in second, minimum is 30, 0 means no update)

We do not recommend using the TKIP encryption if the device operates in 802.11n mode due to the fact that TKIP is not supported by Draft 11N specification.

Figure 4-26

- **PSK Passphrase** - You can enter ASCII characters between 8 and 63 characters or 8 to 64 Hexadecimal characters.
- **Group Key Update Period** - Specify the group key update interval in seconds. The value should be 30 or above. Enter 0 to disable the update.

Be sure to click the **Save** button to save your settings on this page.

4.6.3 Wireless MAC Filtering

Choose menu "**Wireless→MAC Filtering**", you can control the wireless access by configuring the Wireless MAC Address Filtering function, shown in Figure 4-27.

Wireless MAC Filtering

Wireless MAC Filtering: **Disabled**

Filtering Rules

Allow the stations not specified by any enabled entries in the list to access.

Deny the stations not specified by any enabled entries in the list to access.

ID	MAC Address	Status	Description	Modify
1	00-0A-EB-00-07-8A	Enabled	wireless station A	Modify Delete

Figure 4-27 Wireless MAC address Filtering

To filter wireless users by MAC Address, click **Enable**. The default setting is **Disable**.

- **MAC Address** - The wireless station's MAC address that you want to filter.
- **Status** - The status of this entry either **Enabled** or **Disabled**.
- **Description** - A simple description of the wireless station.

To Add a Wireless MAC Address filtering entry, click the **Add New...** button. The "**Add or Modify Wireless MAC Address Filtering entry**" page will appear, shown in Figure 4-28:

Add or Modify Wireless MAC Address Filtering entry

MAC Address:	<input type="text"/>
Description:	<input type="text"/>
Status:	Enabled <input type="button" value="v"/>

Figure 4-28 Add or Modify Wireless MAC Address Filtering entry

To add or modify a MAC Address Filtering entry, follow these instructions:

1. Enter the appropriate MAC Address into the **MAC Address** field. The format of the MAC Address is XX-XX-XX-XX-XX-XX (X is any hexadecimal digit). For example: 00-0A-EB-00-07-8A.
2. Enter a simple description of the wireless station in the **Description** field. For example: Wireless station A.
3. **Status** - Select **Enabled** or **Disabled** for this entry on the **Status** pull-down list.
4. Click the **Save** button to save this entry.

To modify or delete an existing entry:

1. Click the **Modify** in the entry you want to modify. If you want to delete the entry, click the **Delete**.
2. Modify the information.
3. Click the **Save** button.

Click the **Enable All** button to make all entries enabled

Click the **Disabled All** button to make all entries disabled.

Click the **Delete All** button to delete all entries

Click the **Next** button to go to the next page

Click the **Previous** button to return to the previous page.

For example: If you desire that the wireless station A with MAC address 00-0A-EB-00-07-8A and the wireless station B with MAC address 00-0A-EB-00-23-11 are able to access the Router, but all the other wireless stations cannot access the Router, you can configure the **Wireless MAC Address Filtering** list by following these steps:

1. Click the **Enable** button to enable this function.

2. Select the radio button: **Deny the stations not specified by any enabled entries in the list to access** for **Filtering Rules**.
3. Delete all or disable all entries if there are any entries already.
4. Click the **Add New...** button and enter the MAC address 00-0A-EB-00-07-8A /00-0A-EB-00-23-11 in the **MAC Address** field, then enter wireless station A/B in the **Description** field, while select **Enabled** in the **Status** pull-down list. Finally, click the **Save** and the **Back** button.

The filtering rules that configured should be similar to the following list:

Filtering Rules

Allow the stations not specified by any enabled entries in the list to access.

 Deny the stations not specified by any enabled entries in the list to access.

ID	MAC Address	Status	Description	Modify
1	00-0A-EB-00-07-8A	Enabled	wireless station A	Modify Delete
2	00-0A-EB-00-23-11	Enabled	wireless station B	Modify Delete

4.6.4 Wireless Advanced

Choose menu “**Wireless→Wireless Advanced**”, you can configure the advanced settings of your wireless network.

Wireless Advanced

Transmit Power: High
Beacon Interval : (20-1000)
RTS Threshold: (1-2346)
Fragmentation Threshold: (256-2346)
DTIM Interval: (1-255)

Enable WMM
 Enable Short GI
 Enable AP Isolation

Figure 4-29 Wireless Advanced

- **Transmit Power** - Here you can specify the transmit power of Router. You can select High, Middle or Low which you would like. High is the default setting and is recommended.

- **Beacon Interval** - Enter a value between 20-1000 milliseconds for Beacon Interval here. The beacons are the packets sent by the router to synchronize a wireless network. Beacon Interval value determines the time interval of the beacons. The default value is 100.
- **RTS Threshold** - Here you can specify the RTS (Request to Send) Threshold. If the packet is larger than the specified RTS Threshold size, the router will send RTS frames to a particular receiving station and negotiate the sending of a data frame. The default value is 2346.
- **Fragmentation Threshold** - This value is the maximum size determining whether packets will be fragmented. Setting the Fragmentation Threshold too low may result in poor network performance since excessive packets. 2346 is the default setting and is recommended.
- **DTIM Interval** - This value determines the interval of the Delivery Traffic Indication Message (DTIM). A DTIM field is a countdown field informing clients of the next window for listening to broadcast and multicast messages. When the Router has buffered broadcast or multicast messages for associated clients, it sends the next DTIM with a DTIM Interval value. You can specify the value between 1-255 Beacon Intervals. The default value is 1, which indicates the DTIM Interval is the same as Beacon Interval.
- **Enable WMM** - **WMM** function can guarantee the packets with high- priority messages being transmitted preferentially. It is strongly recommended enabled.
- **Enable Short GI** - This function is recommended for it will increase the data capacity by reducing the guard interval time.
- **Enabled AP Isolation** - This function can isolate wireless stations on your network from each other. Wireless devices will be able to communicate with the Router but not with each other. To use this function, check this box. AP Isolation is disabled by default.

 **Note:**

If you are not familiar with the setting items in this page, it's strongly recommended to keep the provided default values; otherwise it may result in lower wireless network performance.

4.6.5 Wireless Statistics

Choose menu “**Wireless**→**Wireless Statistics**”, you can see the MAC Address, Current Status, Received Packets and Sent Packets for each connected wireless station.

Wireless Statistics				
Current Connected Wireless Stations numbers:		1	<input type="button" value="Refresh"/>	
ID	MAC Address	Current Status	Received Packets	Sent Packets
1	00-0A-EB-88-34-75	STA-ASSOC	416	2
		<input type="button" value="Previous"/>	<input type="button" value="Next"/>	

Figure 4-30 The Router attached wireless stations

- **MAC Address** - The connected wireless station's MAC address
- **Current Status** - The connected wireless station's running status, one of **STA-AUTH / STA-ASSOC / STA-JOINED / WPA / WPA-PSK / WPA2 / WPA2-PSK / AP-UP / AP-DOWN / Disconnected**
- **Received Packets** - Packets received by the station
- **Sent Packets** - Packets sent by the station

You cannot change any of the values on this page. To update this page and to show the current connected wireless stations, click on the **Refresh** button.

If the numbers of connected wireless stations go beyond one page, click the **Next** button to go to the next page and click the **Previous** button to return the previous page.

 **Note:**

This page will be refreshed automatically every 5 seconds.

4.7 DHCP

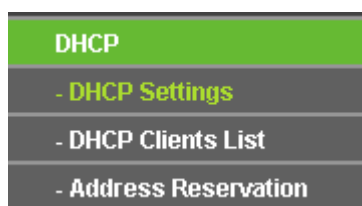


Figure 4-31 The DHCP menu

There are three submenus under the DHCP menu (shown in Figure 4-31): **DHCP Settings**, **DHCP Clients List** and **Address Reservation**. Click any of them, and you will be able to configure the corresponding function.

4.7.1 DHCP Settings

Choose menu "**DHCP→DHCP Settings**", you can configure the DHCP Server on the page (shown in Figure 4-32).The Router is set up by default as a DHCP (Dynamic Host Configuration Protocol) server, which provides the TCP/IP configuration for all the PC(s) that are connected to

the Router on the LAN.

DHCP Settings

DHCP Server:	<input type="radio"/> Disable <input checked="" type="radio"/> Enable	
Start IP Address:	<input style="width: 150px;" type="text" value="192.168.1.100"/>	
End IP Address:	<input style="width: 150px;" type="text" value="192.168.1.199"/>	
Address Lease Time:	<input style="width: 60px;" type="text" value="120"/> minutes (1~2880 minutes, the default value is 120)	
Default Gateway:	<input style="width: 150px;" type="text" value="192.168.1.1"/>	(optional)
Default Domain:	<input style="width: 150px;" type="text"/>	(optional)
Primary DNS:	<input style="width: 150px;" type="text" value="0.0.0.0"/>	(optional)
Secondary DNS:	<input style="width: 150px;" type="text" value="0.0.0.0"/>	(optional)

Figure 4-32 DHCP Settings

- **DHCP Server - Enable or Disable** the DHCP server. If you disable the Server, you must have another DHCP server within your network or else you must configure the computer manually.
- **Start IP Address** - Specify an IP address for the DHCP Server to start with when assigning IP addresses. 192.168.1.100 is the default start address.
- **End IP Address** - Specify an IP address for the DHCP Server to end with when assigning IP addresses. 192.168.1.199 is the default end address.
- **Address Lease Time** - The **Address Lease Time** is the amount of time a network user will be allowed connection to the Router with their current dynamic IP Address. Enter the amount of time in minutes and the user will be "leased" this dynamic IP Address. After the time is up, the user will be automatically assigned a new dynamic IP address. The range of the time is 1 ~ 2880 minutes. The default value is 120 minutes.
- **Default Gateway** - (Optional.) Suggest to input the IP address of the LAN port of the Router, default value is 192.168.1.1
- **Default Domain** - (Optional.) Input the domain name of your network.
- **Primary DNS** - (Optional.) Input the DNS IP address provided by your ISP. Or consult your ISP.
- **Secondary DNS** - (Optional.) Input the IP address of another DNS server if your ISP provides two DNS servers.

 **Note:**

To use the DHCP server function of the Router, you must configure all computers on the LAN as "Obtain an IP Address automatically" mode.

4.7.2 DHCP Clients List

Choose menu "**DHCP→DHCP Clients List**", you can view the information about the clients attached to the Router in the next screen (shown in Figure 4-33).

DHCP Clients List				
ID	Client Name	MAC Address	Assigned IP	Lease Time
1	Anthea	00-13-8F-AA-6D-77	192.168.1.100	01:59:29

Refresh

Figure 4-33 DHCP Clients List

- **ID** - The index of the DHCP Client
- **Client Name** - The name of the DHCP client
- **MAC Address** - The MAC address of the DHCP client
- **Assigned IP** - The IP address that the Router has allocated to the DHCP client.
- **Lease Time** - The time of the DHCP client leased. After the dynamic IP address has expired, a new dynamic IP address will be automatically assigned to the user.

You cannot change any of the values on this page. To update this page and to show the current attached devices, click the **Refresh** button.

4.7.3 Address Reservation

Choose menu "**DHCP→Address Reservation**", you can view and add a reserved addresses for clients via the next screen (shown in Figure 4-34).When you specify a reserved IP address for a PC on the LAN, that PC will always receive the same IP address each time when it accesses the DHCP server. Reserved IP addresses should be assigned to the servers that require permanent IP settings.

Address Reservation				
ID	MAC Address	Reserved IP Address	Status	Modify
1	00-0A-EB-00-23-11	192.168.1.100	Enabled	Modify Delete

Figure 4-34 Address Reservation

- **MAC Address** - The MAC address of the PC for which you want to reserve IP address.
- **Assigned IP Address** - The IP address of the Router reserved.
- **Status** - The status of this entry either **Enabled** or **Disabled**.

To Reserve IP addresses:

1. Click the **Add New ...** button. (Pop-up Figure 4-35)
2. Enter the MAC address (in XX-XX-XX-XX-XX-XX format.) and IP address in dotted-decimal notation of the computer you wish to add.
3. Click the **Save** button when finished.

Add or Modify an Address Reservation Entry	
MAC Address:	<input type="text"/>
Reserved IP Address:	<input type="text"/>
Status:	Enabled <input type="button" value="v"/>

Figure 4-35 Add or Modify an Address Reservation Entry

To modify or delete an existing entry:

1. Click the **Modify** in the entry you want to modify. If you want to delete the entry, click the **Delete**.
2. Modify the information.
3. Click the **Save** button.

Click the **Enable/ Disabled All** button to make all entries enabled/disabled

Click the **Delete All** button to delete all entries

Click the **Next** button to go to the next page and Click the **Previous** button to return the previous page.

4.8 Forwarding

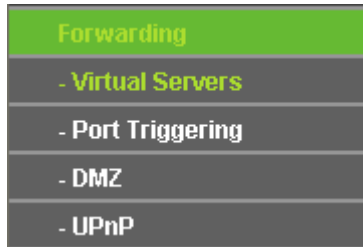


Figure 4-36 The Forwarding menu

There are four submenus under the Forwarding menu (shown in Figure 4-36): **Virtual Servers**, **Port Triggering**, **DMZ** and **UPnP**. Click any of them, and you will be able to configure the corresponding function.

4.8.1 Virtual Servers

Choose menu “**Forwarding**→**Virtual Servers**”, you can view and add virtual servers in the next screen (shown in Figure 4-37). Virtual servers can be used for setting up public services on your LAN, such as DNS, Email and FTP. A virtual server is defined as a service port, and all requests from the Internet to this service port will be redirected to the computer specified by the server IP. Any PC that was used for a virtual server must have a static or reserved IP Address because its IP Address may be changed when using the DHCP function.

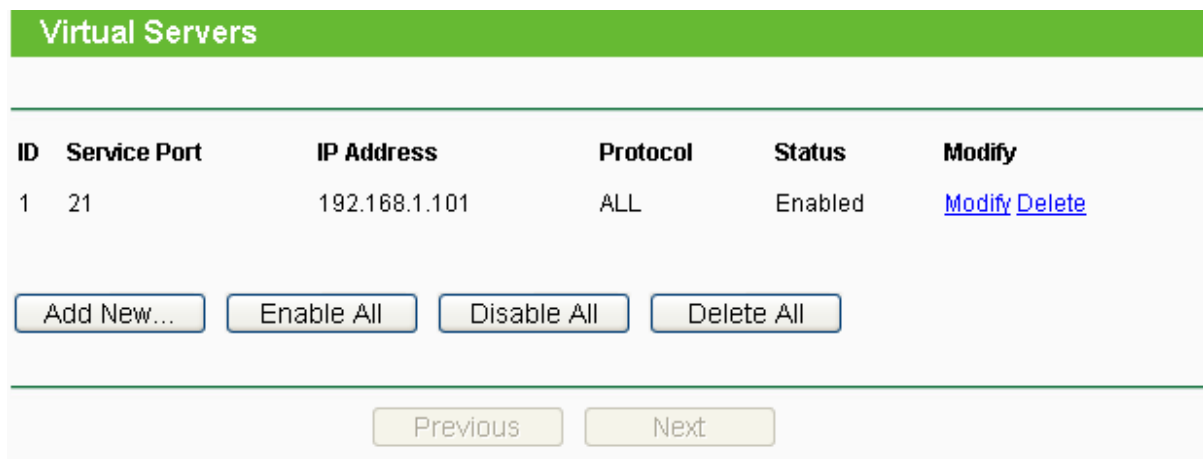


Figure 4-37 Virtual Servers

- **Service Port** - The numbers of External Ports. You can type a service port or a range of service ports (in XXX – YYY format, XXX is the start port number, YYY is the end port number).
- **IP Address** - The IP Address of the PC providing the service application.

- **Protocol** - The protocol used for this application, either **TCP**, **UDP**, or **All** (all protocols supported by the Router).
- **Status** - The status of this entry either **Enabled** or **Disabled**.

To setup a virtual server entry:

1. Click the **Add New...** button. (pop-up Figure 4-38)
2. Select the service you want to use from the Common Service Port list. If the **Common Service Port** list does not have the service that you want to use, type the number of the service port or service port range in the **Service Port** box.
3. Type the IP Address of the computer in the **IP Address** box.
4. Select the protocol used for this application, either **TCP** or **UDP**, or **All**.
5. Select the **Enable** check box to enable the virtual server.
6. Click the **Save** button.

Add or Modify a Virtual Server Entry

Service Port: (XX-XX or XX)

IP Address:

Protocol: ALL ▼

Status: Enabled ▼

Common Service Port: --Select One-- ▼

Save Back

Figure 4-38 Add or Modify a Virtual Server Entry

Note:

If your computer or server has more than one type of available service, please select another service, and enter the same IP Address for that computer or server.

To modify or delete an existing entry:

1. Click the **Modify** in the entry you want to modify. If you want to delete the entry, click the **Delete**.
2. Modify the information.
3. Click the **Save** button.

Click the **Enable/ Disabled All** button to make all entries enabled/ disabled.

Click the **Delete All** button to delete all entries.

Click the **Next** button to go to the next page and click the **Previous** button to return the previous page.

 **Note:**

If you set the service port of the virtual server as 80, you must set the Web management port on **System Tools → Remote Management** page to be any other value except 80 such as 8080. Otherwise there will be a conflict to disable the virtual server.

4.8.2 Port Triggering

Choose menu “**Forwarding→Port Triggering**”, you can view and add port triggering in the next screen (shown in Figure 4-39). Some applications require multiple connections, like Internet games, video conferencing, Internet calling and so on. These applications cannot work with a pure NAT Router. Port Triggering is used for some of these applications that can work with an NAT Router.

Port Triggering						
ID	Trigger Port	Trigger Protocol	Incoming Port	Incoming Protocol	Status	Modify
1	554	ALL	8970-8999	ALL	Enabled	Modify Delete

Figure 4-39 Port Triggering

Once the Router is configured, the operation is as follows:

1. A local host makes an outgoing connection using a destination port number defined in the Trigger Port field.
 2. The Router records this connection, opens the incoming port or ports associated with this entry in the Port Triggering table, and associates them with the local host.
 3. When necessary the external host will be able to connect to the local host using one of the ports defined in the **Incoming Ports** field.
- **Trigger Port** - The port for outgoing traffic. An outgoing connection using this port will "Trigger" this rule.
 - **Trigger Protocol** - The protocol used for Trigger Ports, either **TCP**, **UDP**, or **All** (all protocols supported by the Router).
 - **Incoming Ports Range** - The port or port range used by the remote system when it responds to the outgoing request. A response using one of these ports will be forwarded to the PC that triggered this rule. You can input at most 5 groups of ports (or port section).

Every group of ports must be set apart with ",". For example, 2000-2038, 2050-2051, 2085, 3010-3030.

- **Incoming Protocol** - The protocol used for Incoming Ports Range, either **TCP** or **UDP**, or **ALL** (all protocols supported by the Router).
- **Status** - The status of this entry either **Enabled** or **Disabled**.

To add a new rule, follow the steps below.

1. Click the **Add New...** button, the next screen will pop-up as shown in Figure 4-40.
2. Select a common application from the **Common Applications** drop-down list, then the **Trigger Port** field and the **Incoming Ports** field will be automatically filled. If the **Common Applications** do not have the application you need, enter the **Trigger Port** and the **Incoming Ports** manually.
3. Select the protocol used for Trigger Port from the **Trigger Protocol** drop-down list, either **TCP**, **UDP**, or **All**.
4. Select the protocol used for Incoming Ports from the **Incoming Protocol** drop-down list, either **TCP** or **UDP**, or **All**.
5. Select **Enable** in **Status** field.
6. Click the **Save** button to save the new rule.

Add or Modify a Port Triggering Entry

Trigger Port:	<input type="text"/>
Trigger Protocol:	ALL <input type="button" value="v"/>
Incoming Ports:	<input type="text"/>
Incoming Protocol:	ALL <input type="button" value="v"/>
Status:	Enabled <input type="button" value="v"/>
 Common Applications:	 --Select One-- <input type="button" value="v"/>

Figure 4-40 Add or Modify a Triggering Entry

To modify or delete an existing entry:

1. Click the **Modify** in the entry you want to modify. If you want to delete the entry, click the **Delete**.
2. Modify the information.
3. Click the **Save** button.

Click the **Enable All** button to make all entries enabled

Click the **Disabled All** button to make all entries disabled.

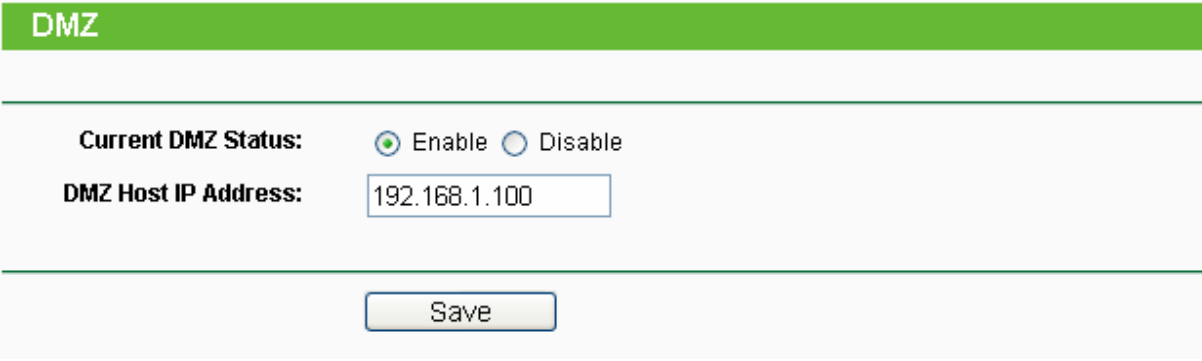
Click the **Delete All** button to delete all entries

 **Note:**

- 1) When the trigger connection is released, the according opening ports will be closed.
- 2) Each rule allowed to be used only by one host on LAN synchronously. The trigger connection of other hosts on LAN will be refused.
- 3) Incoming Port Range cannot overlap each other.

4.8.3 DMZ

Choose menu "**Forwarding**→**DMZ**", you can view and configure DMZ host in the screen (shown in Figure 4-41).The DMZ host feature allows one local host to be exposed to the Internet for a special-purpose service such as Internet gaming or videoconferencing. DMZ host forwards all the ports at the same time. Any PC whose port is being forwarded must have its DHCP client function disabled and should have a new static IP Address assigned to it because its IP Address may be changed when using the DHCP function.



DMZ

Current DMZ Status: Enable Disable

DMZ Host IP Address:

Save

Figure 4-41 DMZ

To assign a computer or server to be a DMZ server:

1. Click the **Enable** radio button
2. Enter the local host IP Address in the **DMZ Host IP Address** field
3. Click the **Save** button.

 **Note:**

After you set the DMZ host, the firewall related to the host will not work.

4.8.4 UPnP

Choose menu "**Forwarding**→**UPnP**", you can view the information about **UPnP**(Universal Plug and Play) in the screen (shown in Figure 4-42).The UPnP feature allows the devices, such as Internet computers, to access the local host resources or devices as needed. UPnP devices can be automatically discovered by the UPnP service application on the LAN.

UPnP

Current UPnP Status: **Enabled**

Current UPnP Settings List

ID	App Description	External Port	Protocol	Internal Port	IP Address	Status
1	BitComet(192.168.1.100:23959)	23959	TCP	23959	192.168.1.100	Enabled
2	BitComet(192.168.1.100:23959)	23959	UDP	23959	192.168.1.100	Enabled

Figure 4-42 UPnP Setting

- **Current UPnP Status** - UPnP can be enabled or disabled by clicking the **Enable** or **Disable** button. As allowing this may present a risk to security, this feature is enabled by default.
- **Current UPnP Settings List** - This table displays the current UPnP information.
 - **App Description** -The description provided by the application in the UPnP request
 - **External Port** - External port, which the router opened for the application.
 - **Protocol** - Shows which type of protocol is opened.
 - **Internal Port** - Internal port, which the router opened for local host.
 - **IP Address** - The UPnP device that is currently accessing the router.
 - **Status** - The port's status displayed here. "Enabled" means that port is still active. Otherwise, the port is inactive.

Click **Refresh** to update the Current UPnP Settings List.

4.9 Security



Figure 4-43 The Security menu

There are four submenus under the Security menu as shown in Figure 4-43: **Basic Security**, **Advanced Security**, **Local Management** and **Remote Management**. Click any of them, and you will be able to configure the corresponding function.

4.9.1 Basic Security

Choose menu “**Security** → **Basic Security**”, you can configure the basic security in the screen as shown in Figure 4-37.

Basic Security

Firewall

SPI Firewall: Enable Disable

VPN

PPTP Passthrough: Enable Disable

L2TP Passthrough: Enable Disable

IPSec Passthrough: Enable Disable

ALG

FTP ALG: Enable Disable

TFTP ALG: Enable Disable

H323 ALG: Enable Disable

Figure 4-44 Basic Security

- **Firewall** - A firewall protects your network from the outside world. Here you can enable or disable the Router’s firewall.
 - **SPI Firewall** - SPI (Stateful Packet Inspection, also known as dynamic packet filtering) helps to prevent cyber attacks by tracking more state per session. It validates that the traffic passing through the session conforms to the protocol. SPI Firewall is enabled by factory default. If you want all the computers on the LAN exposed to the outside world, you can disable it.
- **VPN** - VPN Passthrough must be enabled if you want to allow VPN tunnels using IPSec, PPTP, or L2TP protocols to pass through the Router’s firewall.
 - **PPTP Passthrough** - Point-to-Point Tunneling Protocol (PPTP) allows the Point-to-Point Protocol (PPP) to be tunneled through an IP network. To allow PPTP tunnels to pass through the Router, keep the default, **Enabled**.
 - **L2TP Passthrough** - Layer 2 Tunneling Protocol (L2TP) is the method used to enable Point-to-Point sessions via the Internet on the Layer 2 level. To allow L2TP tunnels to pass through the Router, keep the default, **Enabled**.
 - **IPSec Passthrough** - Internet Protocol Security (IPSec) is a suite of protocols for ensuring private, secure communications over Internet Protocol (IP) networks, through

the use of cryptographic security services. To allow IPSec tunnels to pass through the Router, keep the default, **Enabled**.

- **ALG** - It is recommended to enable Application Layer Gateway (ALG) because ALG allows customized Network Address Translation (NAT) traversal filters to be plugged into the gateway to support address and port translation for certain application layer "control/data" protocols such as FTP, TFTP, H323 etc.
 - **FTP ALG** - To allow FTP clients and servers to transfer data across NAT, keep the default **Enable**.
 - **TFTP ALG** - To allow TFTP clients and servers to transfer data across NAT, keep the default **Enable**.
 - **H323 ALG** - To allow Microsoft NetMeeting clients to communicate across NAT, keep the default **Enable**.

Click the **Save** button to save your settings.

4.9.2 Advanced Security

Choose menu "**Security** → **Advanced Security**", you can protect the Router from being attacked by TCP-SYN Flood, UDP Flood and ICMP-Flood in the screen as shown in Figure 4-45.

Advanced Security

Packets Statistics Interval (5 ~ 60): Seconds

DoS Protection: Disable Enable

Enable ICMP-FLOOD Attack Filtering

ICMP-FLOOD Packets Threshold (5 ~ 3600): Packets/s

Enable UDP-FLOOD Filtering

UDP-FLOOD Packets Threshold (5 ~ 3600): Packets/s

Enable TCP-SYN-FLOOD Attack Filtering

TCP-SYN-FLOOD Packets Threshold (5 ~ 3600): Packets/s

Ignore Ping Packet From WAN Port

Forbid Ping Packet From LAN Port

Figure 4-45 Advanced Security

- **Packets Statistics Interval (5~60)** - The default value is 10. Select a value between 5 and 60 seconds from the drop-down list. The Packets Statistics Interval value indicates the time section of the packets statistics. The result of the statistics is used for analysis by SYN Flood, UDP Flood and ICMP-Flood.
- **DoS Protection** - Denial of Service protection. Check the Enable or Disable button to enable or disable the DoS protection function. Only when it is enabled, will the flood filters be enabled.

 **Note:**

Dos Protection will take effect only when the **Traffic Statistics** in “**System Tool** → **Traffic Statistics**” is enabled.

- **Enable ICMP-FLOOD Attack Filtering** - Enable or Disable the ICMP-FLOOD Attack Filtering.
- **ICMP-FLOOD Packets Threshold (5~3600)** - The default value is 50. Enter a value between 5 ~ 3600. When the current ICMP-FLOOD Packets number is beyond the set value, the Router will startup the blocking function immediately.

- **Enable UDP-FLOOD Filtering** - Enable or Disable the UDP-FLOOD Filtering.
- **UDP-FLOOD Packets Threshold (5~3600)** - The default value is 500. Enter a value between 5 ~ 3600. When the current UPD-FLOOD Packets number is beyond the set value, the Router will startup the blocking function immediately.
- **Enable TCP-SYN-FLOOD Attack Filtering** - Enable or Disable the TCP-SYN-FLOOD Attack Filtering.
- **TCP-SYN-FLOOD Packets Threshold (5~3600)** - The default value is 50. Enter a value between 5 ~ 3600. When the current TCP-SYN-FLOOD Packets numbers is beyond the set value, the Router will startup the blocking function immediately.
- **Ignore Ping Packet From WAN Port** - Enable or Disable Ignore Ping Packet From WAN Port. The default setting is disabled. If enabled, the ping packet from the Internet cannot access the Router.
- **Forbid Ping Packet From LAN Port** - Enable or Disable Forbid Ping Packet From LAN Port. The default setting is disabled. If enabled, the ping packet from LAN cannot access the Router. This function can be used to defend against some viruses.

Click the **Save** button to save the settings.

Click the **Blocked DoS Host List** button to display the DoS host table by blocking.

4.9.3 Local Management

Choose menu “**Security** → **Local Management**”, you can configure the management rule in the screen as shown in Figure 4-46. The management feature allows you to deny computers in LAN from accessing the Router.

Local Management

Management Rules

All the PCs on the LAN are allowed to access the Router's Web-Based Utility

Only the PCs listed can browse the built-in web pages to perform Administrator tasks

MAC 1:

MAC 2:

MAC 3:

MAC 4:

Your PC's MAC Address:

Figure 4-46 Local Management

By default, the radio button “**All the PCs on the LAN are allowed to access the Router’s Web-Based Utility**” is checked. If you want to allow PCs with specific MAC Addresses to access the Setup page of the Router’s Web-Based Utility locally from inside the network, check the radio button “**Only the PCs listed can browse the built-in web pages to perform Administrator tasks**”, and then enter each MAC Address in a separate field. The format for the MAC Address is XX-XX-XX-XX-XX-XX (X is any hexadecimal digit). Only the PCs with MAC address listed can use the password to browse the built-in web pages to perform Administrator tasks while all the others will be blocked.

After click the **Add** button, your PC’s MAC Address will be placed in the list above.

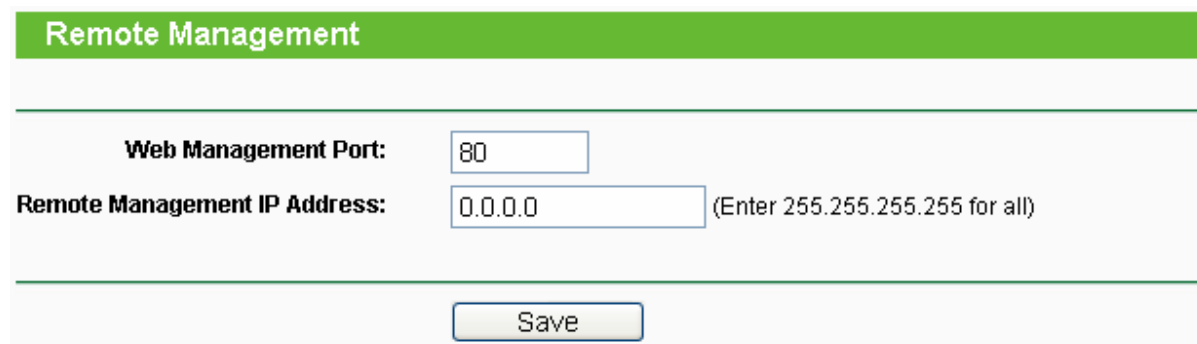
Click the **Save** button to save your settings.

 **Note:**

If your PC is blocked but you want to access the Router again, use a pin to press and hold the **Reset Button** (hole) on the back panel for about 5 seconds to reset the Router’s factory defaults on the Router’s Web-Based Utility.

4.9.4 Remote Management

Choose menu “**Security → Remote Management**”, you can configure the Remote Management function in the screen as shown in Figure 4-47. This feature allows you to manage your Router from a remote location via the Internet.



Remote Management

Web Management Port:

Remote Management IP Address: (Enter 255.255.255.255 for all)

Figure 4-47 Remote Management

- **Web Management Port** - Web browser access normally uses the standard HTTP service port 80. This Router's default remote management web port number is 80. For greater security, you can change the remote management web port to a custom port by entering that number in the box provided. Choose a number between 1 and 65534 but do not use the number of any common service port.
- **Remote Management IP Address** - This is the current address you will use when accessing your Router from the Internet. This function is disabled when the IP address is set to the default value of 0.0.0.0. To enable this function change 0.0.0.0 to a valid IP address. If set to 255.255.255.255, then all the hosts can access the Router from internet.

 **Note:**

- 1) To access the Router, you should type your Router's WAN IP address into your browser's

address (in IE) or Location (in Navigator) box, followed by a colon and the custom port number. For example, if your Router's WAN address is 202.96.12.8, and the port number used is 8080, please enter `http://202.96.12.8:8080` in your browser. Later, you may be asked for the Router's password. After successfully entering the username and password, you will be able to access the Router's web-based utility.

- 2) Be sure to change the Router's default password to a very secure password.

4.10 Parental Control

Choose menu “**Parental Control**”, and you can configure the parental control in the screen as shown in Figure 4-48. The Parental Control function can be used to control the internet activities of the child, limit the child to access certain websites and restrict the time of surfing.

Parental Control Settings

Non-Parental PCs not listed will not be able to access the Internet.

Parental Control: Disable Enable

MAC Address of Parental PC:

MAC Address of Your PC:

ID	MAC address	Website Description	Schedule	Status	Modify
<input type="button" value="Add New..."/> <input type="button" value="Enable All"/> <input type="button" value="Disable All"/> <input type="button" value="Delete All"/>					

Page

Figure 4-48 Parental Control Settings

- **Parental Control** - Check **Enable** if you want this function to take effect, otherwise check **Disable**.
- **MAC Address of Parental PC** - In this field, enter the MAC address of the controlling PC, or you can make use of the **Copy To Above** button below.
- **MAC Address of Your PC** - This field displays the MAC address of the PC that is managing this Router. If the MAC Address of your adapter is registered, you can click the Copy To Above button to fill this address to the MAC Address of Parental PC field above.
- **Website Description** - Description of the allowed website for the PC controlled.
- **Schedule** - The time period allowed for the PC controlled to access the Internet. For detailed information, please go to “**Access Control** → **Schedule**”.
- **Modify** - Here you can edit or delete an existing entry.

To add a new entry, please follow the steps below.

1. Click the **Add New...** button and the next screen will pop-up as shown in Figure 4-49.
2. Enter the MAC address of the PC (e.g. 00-11-22-33-44-AA) you'd like to control in the MAC Address of Child PC field. Or you can choose the MAC address from the All Address in Current LAN drop-down list.
3. Give a description (e.g. Allow Google) for the website allowed to be accessed in the Website Description field.
4. Enter the allowed domain name of the website, either the full name or the keywords (e.g. google) in the Allowed Domain Name field. Any domain name with keywords in it (www.google.com, www.google.com.cn) will be allowed.
5. Select from the Effective Time drop-down list the schedule (e.g. Schedule_1) you want the entry to take effect. If there are not suitable schedules for you, click the **Schedule** in red below to go to the Advance Schedule Settings page and create the schedule you need.
6. In the Status field, you can select **Enabled** or **Disabled** to enable or disable your entry.
7. Click the **Save** button.

Click the **Enable All** button to enable all the rules in the list.

Click the **Disable All** button to disable all the rules in the list.

Click the **Delete All** button to delete all the entries in the table.

Click the **Next** button to go to the next page, or click the **Previous** button return to the previous page.

Add or Modify Parental Control Entry

The Schedule is based on the time of the Router. The time can be set in "System Tools -> [Time settings](#)".

MAC Address of Child PC:	<input type="text"/>
All MAC Address In Current LAN:	--please select-- <input type="button" value="v"/>
Website Description:	<input type="text"/>
Allowed Domain Name:	<input type="text"/>
	<input type="text"/>
	<input type="text"/>
	<input type="text"/>
	<input type="text"/>
	<input type="text"/>
	<input type="text"/>
	<input type="text"/>
Effective Time:	Anytime <input type="button" value="v"/>
	The time schedule can be set in "Access Control-> Schedule "
Status:	Enabled <input type="button" value="v"/>

Figure 4-49 Add or Modify Parental Control Entry

For example: If you desire that the child PC with MAC address 00-11-22-33-44-AA can access www.google.com on Saturday only while the parent PC with MAC address 00-11-22-33-44-BB is without any restriction, you should follow the settings below.

1. Click "**Parental Control**" menu on the left to enter the Parental Control Settings page. Check Enable and enter the MAC address 00-11-22-33-44-BB in the MAC Address of Parental PC field.
2. Click "**Access Control** → **Schedule**" on the left to enter the Schedule Settings page. Click **Add New...** button to create a new schedule with Schedule Description is Schedule_1, Day is Sat and Time is all day-24 hours.
3. Click "**Parental Control**" menu on the left to go back to the Add or Modify Parental Control Entry page:
 - Click **Add New...** button.
 - Enter 00-11-22-33-44-AA in the **MAC Address of Child PC** field.
 - Enter "Allow Google" in the **Website Description** field.
 - Enter "www.google.com" in the **Allowed Domain Name** field.

- Select “Schedule_1” you create just now from the **Effective Time** drop-down list.
 - In **Status** field, select Enable.
4. Click **Save** to complete the settings.

Then you will go back to the Parental Control Settings page and see the following list, as shown in Figure 4-50.

ID	MAC address	Website Description	Schedule	Status	Modify
1	00-11-22-33-44-AA	Allow Google	Schedule_1	Enabled	Edit Delete

Figure 4-50 Parental Control Settings

4.11 Access Control

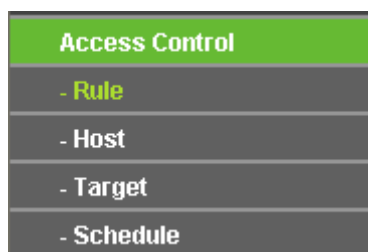


Figure 4-51 Access Control

There are four submenus under the Access Control menu as shown in Figure 4-51: **Rule**, **Host**, **Target** and **Schedule**. Click any of them, and you will be able to configure the corresponding function.

4.11.1 Rule

Choose menu “**Access Control** → **Rule**”, you can view and set Access Control rules in the screen as shown in Figure 4-52.

Access Control Rule Management

Enable Internet Access Control

Default Filter Policy

- Allow the packets not specified by any access control policy to pass through the Router
- Deny the packets not specified by any access control policy to pass through the Router

Save

ID	Rule Name	Host	Target	Schedule	Action	Status	Modify
1	Rule_1	Host_1	Target_1	Schedule_1	Allow	Enabled	Edit Delete

Add New...

Enable All

Disable All

Delete All

Move

ID

To ID

Previous

Next

Page 1

Figure 4-52 Access Control Rule Management

- **Enable Internet Access Control** - Select the check box to enable the Internet Access Control function, so the Default Filter Policy can take effect.
- **Rule Name** - Here displays the name of the rule and this name is unique.
- **Host** - Here displays the host selected in the corresponding rule.
- **Target** - Here displays the target selected in the corresponding rule.
- **Schedule** - Here displays the schedule selected in the corresponding rule.
- **Action** - Here displays the action the Router takes to deal with the packets. It could be **Allow** or **Deny**. **Allow** means that the Router permits the packets to go through the Router. **Deny** means that the Router rejects the packets to go through the Router.
- **Status** - This field displays the status of the rule. **Enabled** means the rule will take effect, **Disabled** means the rule will not take effect.
- **Modify** - Here you can edit or delete an existing rule.

To add a new rule, please follow the steps below.

1. Click the **Add New...** button and the next screen will pop-up as shown in Figure 4-53.
2. Give a name (e.g. Rule_1) for the rule in the **Rule Name** field.
3. Select a host from the **Host** drop-down list or choose "**Click Here To Add New Host List**".
4. Select a target from the **Target** drop-down list or choose "**Click Here To Add New Target List**".

5. Select a schedule from the **Schedule** drop-down list or choose “**Click Here To Add New Schedule**”.
6. In the **Action** field, select **Deny** or **Allow**.
7. In the **Status** field, select **Enabled** or **Disabled** to enable or disable your entry.
8. Click the **Save** button.

Click the **Enable All** button to enable all the rules in the list.

Click the **Disable All** button to disable all the rules in the list.

Click the **Delete All** button to delete all the entries in the table.

You can change the entry’s order as desired. Fore entries are before hind entries. Enter the ID number in the first box you want to move and another ID number in second box you want to move to, and then click the **Move** button to change the entry’s order.

Click the **Next** button to go to the next page, or click the **Previous** button return to the previous page.

Add or Modify Internet Access Control Entry

Rule Name:	<input style="width: 100%;" type="text"/>
Host:	<input style="width: 100%;" type="text"/> Click Here To Add New Host List.
Target:	<input style="width: 100%;" type="text"/> Click Here To Add New Target List.
Schedule:	<input style="width: 100%;" type="text"/> Click Here To Add New Schedule.
Action:	<input style="width: 100%;" type="text"/>
Status:	<input style="width: 100%;" type="text"/>

Figure 4-53 Add or Modify Internet Access Control Entry

For example: If you desire to allow the host with MAC address 00-11-22-33-44-AA to access www.google.com only from **18:00** to **20:00** on **Saturday and Sunday**, and forbid other hosts in the LAN to access the Internet, you should follow the settings below:

1. Click “**Access Control** → **Host**” in the left to enter the Host Settings page. Add a new entry with the Host Description is Host_1 and MAC Address is 00-11-22-33-44-AA.
2. Click “**Access Control** → **Target**” in the left to enter the Target Settings page. Add a new entry with the Target Description is Target_1 and Domain Name is www.google.com.
3. Click “**Access Control** → **Schedule**” in the left to enter the Schedule Settings page. Add a new entry with the Schedule Description is Schedule_1, Day is Sat and Sun, Start Time is 1800 and Stop Time is 2000.

4. Click “**Access Control** → **Rule**” in the left to return to the Access Control Rule Management page. Select “**Enable Internet Access Control**” and choose "Deny the packets not specified by any access control policy to pass through the Router".
5. Click **Add New...** button to add a new rule as follows:
 - In **Rule Name** field, create a name for the rule. Note that this name should be unique, for example Rule_1.
 - In **Host** field, select Host_1.
 - In **Target** field, select Target_1.
 - In **Schedule** field, select Schedule_1.
 - In **Action** field, select Allow.
 - In **Status** field, select Enable.
 - Click **Save** to complete the settings.

Then you will go back to the Access Control Rule Management page and see the following list.

ID	Rule Name	Host	Target	Schedule	Action	Status	Modify
1	Rule_1	Host_1	Target_1	Schedule_1	Allow	Enabled	Edit Delete

4.11.2 Host

Choose menu “**Access Control** → **Host**”, you can view and set a Host list in the screen as shown in Figure 4-54. The host list is necessary for the Access Control Rule.

Host Settings

ID	Host Description	Information	Modify
1	Host_1	IP: 192.168.1.1 - 192.168.1.23	Edit Delete

Page 1

Figure 4-54 Host Settings

- **Host Description** - Here displays the description of the host and this description is unique.
- **Information** - Here displays the information about the host. It can be IP or MAC.
- **Modify** - To modify or delete an existing entry.

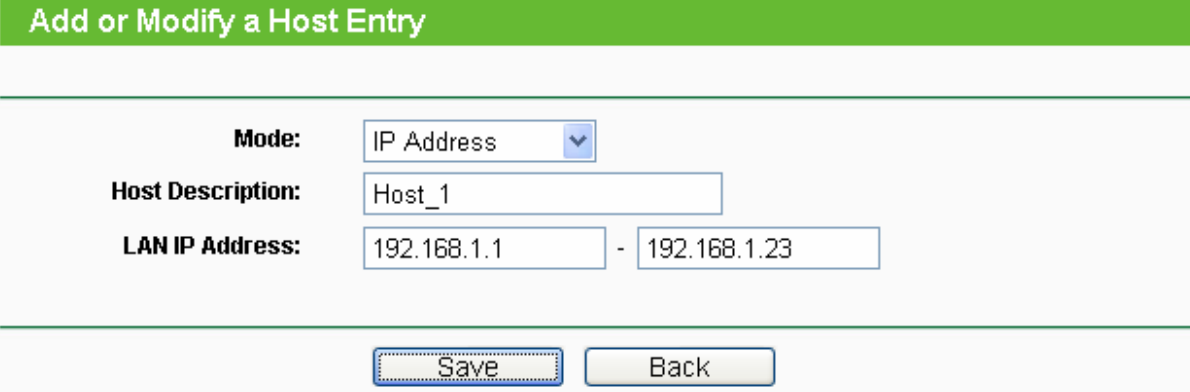
To add a new entry, please follow the steps below.

1. Click the **Add New...** button.
2. In the **Mode** field, select IP Address or MAC Address.

- If you select IP Address, the screen shown is Figure 4-55.
 - 1) In **Host Description** field, create a unique description for the host (e.g. Host_1).
 - 2) In **LAN IP Address** field, enter the IP address.
 - If you select MAC Address, the screen shown is Figure 4-56.
 - 1) In **Host Description** field, create a unique description for the host (e.g. Host_1).
 - 2) In **MAC Address** field, enter the MAC address.
3. Click the **Save** button to complete the settings.

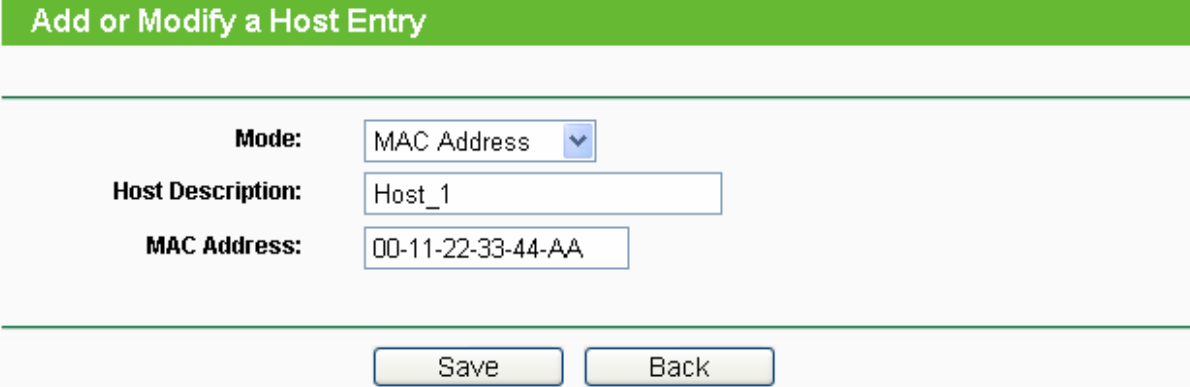
Click the **Delete All** button to delete all the entries in the table.

Click the **Next** button to go to the next page, or click the **Previous** button return to the previous page.



The screenshot shows a web interface titled "Add or Modify a Host Entry". It features a form with the following fields: "Mode" is a dropdown menu set to "IP Address"; "Host Description" is a text input field containing "Host_1"; "LAN IP Address" consists of two text input fields, the first containing "192.168.1.1" and the second containing "192.168.1.23", separated by a hyphen. At the bottom of the form are two buttons: "Save" and "Back".

Figure 4-55 Add or Modify a Host Entry



The screenshot shows a web interface titled "Add or Modify a Host Entry". It features a form with the following fields: "Mode" is a dropdown menu set to "MAC Address"; "Host Description" is a text input field containing "Host_1"; "MAC Address" is a text input field containing "00-11-22-33-44-AA". At the bottom of the form are two buttons: "Save" and "Back".

Figure 4-56 Add or Modify a Host Entry

For example: If you desire to restrict the internet activities of host with MAC address 00-11-22-33-44-AA, you should first follow the settings below:

1. Click **Add New...** button in Figure 4-54 to enter the Add or Modify a Host Entry page.
2. In **Mode** field, select MAC Address from the drop-down list.
3. In **Host Description** field, create a **unique** description for the host (e.g. Host_1).
4. In **MAC Address** field, enter 00-11-22-33-44-AA.
5. Click **Save** to complete the settings.

Then you will go back to the Host Settings page and see the following list.

ID	Host Description	Information	Modify
1	Host_1	MAC: 00-11-22-33-44-AA	Edit Delete

4.11.3 Target

Choose menu “**Access Control** → **Target**”, you can view and set a Target list in the screen as shown in Figure 4-57. The target list is necessary for the Access Control Rule.

Target Settings			
ID	Target Description	Information	Modify
1	Target_1	192.168.1.2 - 192.168.1.23/21/TCP	Edit Delete

Page

Figure 4-57 Target Settings

- **Target Description** - Here displays the description about the target and this description is unique.
- **Information** - The target can be IP address, port, or domain name.
- **Modify** - To modify or delete an existing entry.

To add a new entry, please follow the steps below.

1. Click the **Add New...** button.
2. In **Mode** field, select IP Address or Domain Name.
 - If you select **IP Address**, the screen shown is Figure 4-58.
 - 1) In **Target Description** field, create a unique description for the target (e.g. Target_1).
 - 2) In **IP Address** field, enter the IP address of the target.
 - 3) Select a common service from **Common Service Port** drop-down list, so that the **Target Port** will be automatically filled. If the **Common Service Port** drop-down list doesn't have the service you want, specify the **Target Port** manually.
 - 4) In **Protocol** field, select TCP, UDP, ICMP or ALL.
 - If you select **Domain Name**, the screen shown is Figure 4-59.
 - 1) In **Target Description** field, create a unique description for the target (e.g. Target_1).
 - 2) In **Domain Name** field, enter the domain name, either the full name or the keywords (for example google) in the blank. Any domain name with keywords in it (www.google.com, www.google.cn) will be blocked or allowed. You can enter 4 domain names.

3. Click the **Save** button.

Click the **Delete All** button to delete all the entries in the table.

Click the **Next** button to go to the next page, or click the **Previous** button return to the previous page.

Add or Modify an Access Target Entry

Mode:	<input type="text" value="IP Address"/>
Target Description:	<input type="text"/>
IP Address:	<input type="text"/> - <input type="text"/>
Target Port:	<input type="text"/> - <input type="text"/>
Protocol:	<input type="text" value="ALL"/>
Common Service Port:	<input type="text" value="--please select--"/>

Figure 4-58 Add or Modify an Access Target Entry

Add or Modify an Access Target Entry

Mode:	<input type="text" value="Domain Name"/>
Target Description:	<input type="text"/>
Domain Name:	<input type="text"/>
	<input type="text"/>
	<input type="text"/>
	<input type="text"/>

Figure 4-59 Add or Modify an Access Target Entry

For example: If you desire to restrict the internet activities of host with MAC address 00-11-22-33-44-AA in the LAN to access www.google.com only, you should first follow the settings below:

1. Click **Add New...** button in Figure 4-57 to enter the Add or Modify an Access Target Entry page.
2. In **Mode** field, select Domain Name from the drop-down list.

3. In **Target Description** field, create a unique description for the target (e.g. Target_1).
4. In **Domain Name** field, enter www.google.com.
5. Click **Save** to complete the settings.

Then you will go back to the Target Settings page and see the following list.

ID	Target Description	Information	Modify
1	Target_1	www.google.com	Edit Delete

4.11.4 Schedule

Choose menu "**Access Control** → **Schedule**", you can view and set a Schedule list in the next screen as shown in Figure 4-60. The Schedule list is necessary for the Access Control Rule.

Schedule Settings				
ID	Schedule Description	Day	Time	Modify
1	Schedule_1	Sat	00:00 - 24:00	Edit Delete

Page

Figure 4-60 Schedule Settings

- **Schedule Description** - Here displays the description of the schedule and this description is unique.
- **Day** - Here displays the day(s) in a week.
- **Time** - Here displays the time period in a day.
- **Modify** - Here you can edit or delete an existing schedule.

To add a new schedule, follow the steps below.

1. Click **Add New...** button shown in Figure 4-60 and the next screen will pop-up as shown in Figure 4-61.
2. In **Schedule Description** field, create a unique description for the schedule (e.g. Schedule_1).
3. In **Day** field, select the day or days you need.
4. In **Time** field, you can select all day-24 hours or you may enter the Start Time and Stop Time in the corresponding field.
5. Click **Save** to complete the settings.

Click the **Delete All** button to delete all the entries in the table.

Click the **Next** button to go to the next page, or click the **Previous** button return to the previous page.

Advance Schedule Settings

Note: The Schedule is based on the time of the Router.

Schedule Description:

Day: Everyday Select Days

Mon Tue Wed Thu Fri Sat Sun

Time: all day-24 hours:

Start Time: (HHMM)

Stop Time: (HHMM)

Figure 4-61 Advanced Schedule Settings

For example: If you desire to restrict the internet activities of host with MAC address 00-11-22-33-44-AA to access www.google.com only from **18:00 to 20:00** on **Saturday** and **Sunday**, you should first follow the settings below:

1. Click **Add New...** button shown in Figure 4-60 to enter the Advanced Schedule Settings page.
2. In **Schedule Description** field, create a unique description for the schedule (e.g. Schedule_1).
3. In **Day** field, check the Select Days radio button and then select Sat and Sun.
4. In **Time** field, enter 1800 in Start Time field and 2000 in Stop Time field.
5. Click **Save** to complete the settings.

Then you will go back to the Schedule Settings page and see the following list.

ID	Schedule Description	Day	Time	Modify
1	Schedule_1	Sat Sun	18:00 - 20:00	Edit Delete

4.12 Static Routing

Choose menu “**static routing**”, you can configure the static route in the next screen (shown in Figure 4-62). A static route is a pre-determined path that network information must travel to reach a specific host or network.

Static Routing					
ID	Destination IP Address	Subnet Mask	Default Gateway	Status	Modify
1	202.108.37.42	255.255.255.0	202.108.37.1	Disabled	Modify Delete

Figure 4-62 Static Routing

To add static routing entries:

1. Click **Add New...** shown in Figure 4-62, you will see the following screen.

Add or Modify a Static Route Entry	
Destination IP Address:	<input type="text"/>
Subnet Mask:	<input type="text"/>
Default Gateway:	<input type="text"/>
Status:	Enabled <input type="button" value="v"/>

Figure 4-63 Add or Modify a Static Route Entry

2. Enter the following data:
 - **Destination IP Address** - The **Destination IP Address** is the address of the network or host that you want to assign to a static route.
 - **Subnet Mask** - The **Subnet Mask** determines which portion of an IP Address is the network portion, and which portion is the host portion.
 - **Gateway** - This is the IP Address of the gateway device that allows for contact between the Router and the network or host.
3. Select **Enabled** or **Disabled** for this entry on the **Status** pull-down list.
4. Click the **Save** button to make the entry take effect.

Other configurations for the entries:

Click the **Delete** button to delete the entry.

Click the **Enable All** button to enable all the entries.

Click the **Disable All** button to disable all the entries.

Click the **Delete All** button to delete all the entries.

Click the **Previous** button to view the information in the previous screen, click the **Next** button to view the information in the next screen.

4.13 Bandwidth Control

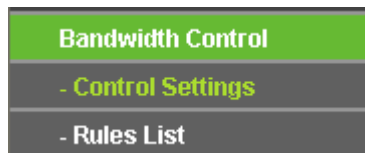


Figure 4-64

There are two submenus under the Bandwidth Control menu as shown in Figure 4-57. Click any of them, and you will be able to configure the corresponding function. The detailed explanations for each submenu are provided below.

4.13.1 Control Settings

Choose menu “**Bandwidth Control → Control Settings**”, you can configure the Egress Bandwidth and Ingress Bandwidth in the next screen. Their values you configure should be less than 100000Kbps. For optimal control of the bandwidth, please select the right Line Type and ask your ISP for the total bandwidth of the egress and ingress.

Figure 4-65 Bandwidth Control Settings

- **Enable Bandwidth Control** - Check this box so that the Bandwidth Control settings can take effect.
- **Line Type** - Select the right type for you network connection. If you don't know how to choose, please ask your ISP for the information.
- **Egress Bandwidth** - The upload speed through the WAN port.
- **Ingress Bandwidth** - The download speed through the WAN port.

4.13.2 Rules List

Choose menu “**Bandwidth Control** → **Rules List**”, you can view and configure the Bandwidth Control rules in the screen below.

Bandwidth Control Rules List							
ID	Description	Egress Bandwidth(Kbps)		Ingress Bandwidth(Kbps)		Enable	Modify
		Min	Max	Min	Max		
1	192.168.1.2 - 192.168.1.23/21	0	1000	0	4000	<input checked="" type="checkbox"/>	Modify Delete

Now is the page

Figure 4-66 Bandwidth Control Rules List

- **Description** - This is the information about the rules such as address range.
- **Egress bandwidth** - This field displays the max and mix upload bandwidth through the WAN port, the default is 0.
- **Ingress bandwidth** - This field displays the max and mix download bandwidth through the WAN port, the default is 0.
- **Enable** - This displays the status of the rule.
- **Modify** - Click **Modify** to edit the rule. Click **Delete** to delete the rule.

To add/modify a Bandwidth Control rule, follow the steps below.

Step 1: Click **Add New...** shown in Figure 4-66, you will see a new screen shown in Figure 4-67.

Step 2: Enter the information like the screen shown below.

Bandwidth Control Rule Settings

Enable:	<input checked="" type="checkbox"/>	
IP Range:	<input type="text" value="192.168.1.2"/> - <input type="text" value="192.168.1.23"/>	
Port Range:	<input type="text" value="21"/> - <input type="text"/>	
Protocol:	<input type="text" value="ALL"/> ▾	
	Min Bandwidth(Kbps)	Max Bandwidth(Kbps)
Egress Bandwidth:	<input type="text" value="0"/>	<input type="text" value="1000"/>
Ingress Bandwidth:	<input type="text" value="0"/>	<input type="text" value="4000"/>

Figure 4-67 Bandwidth Control Rule Settings

Step 3: Click the **Save** button.

4.14 IP & MAC Binding Setting

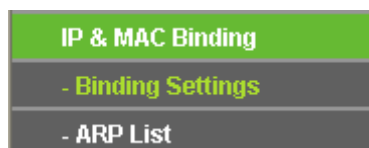


Figure 4-68 the IP & MAC Binding menu

There are two submenus under the IP & MAC Binding menu (shown in Figure 4-68): **Binding Setting** and **ARP List**. Click any of them, and you will be able to scan or configure the corresponding function. The detailed explanations for each submenu are provided below.

4.14.1 Binding Setting

This page displays the **IP & MAC Binding Setting** table; you can operate it in accord with your desire. (shown in Figure 4-69).

Binding Settings

ARP Binding:
 Disable
 Enable

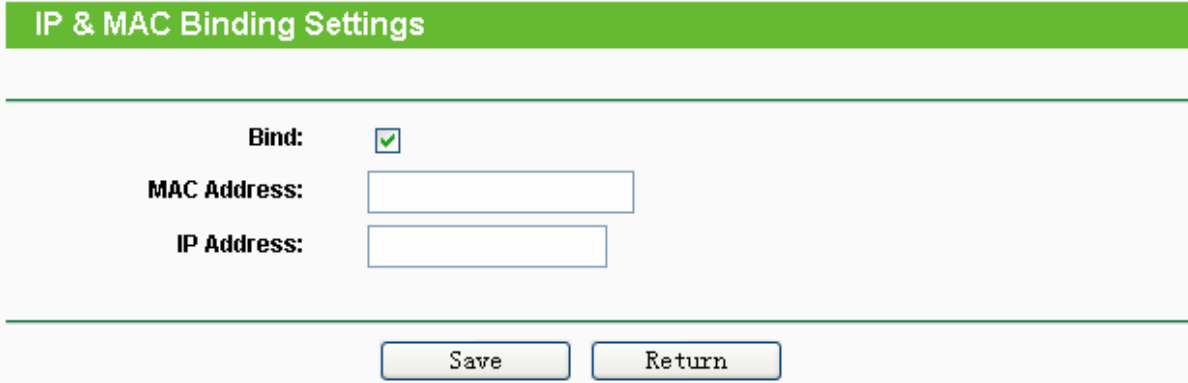
ID	MAC Address	IP Address	Bind	Modify
1	00-0A-EB-00-07-5F	192.168.1.55	<input checked="" type="checkbox"/>	Modify Delete

Page ▾

Figure 4-69 Binding Setting

- **MAC Address** - The MAC address of the controlled computer in the LAN.
- **IP Address** - The assigned IP address of the controlled computer in the LAN.
- **Bind** - Check this option to enable ARP binding for a specific device.
- **Modify** - To modify or delete an existing entry.

When you want to add or modify an IP & MAC Binding entry, you can click the **Add New** button or **Modify** button, and then you will go to the next page. This page is used for adding or modifying an IP & MAC Binding entry (shown in Figure 4-70).



IP & MAC Binding Settings

Bind:

MAC Address:

IP Address:

Figure 4-70 IP & MAC Binding Setting (Add & Modify)

To add IP & MAC Binding entries, follow the steps below.

1. Click the **Add New...** button as shown in Figure 4-69.
2. Enter the MAC Address and IP Address.
3. Select the Bind checkbox.
4. Click the **Save** button to save it.

To modify or delete an existing entry, follow the steps below.

1. Find the desired entry in the table.
2. Click **Modify** or **Delete** as desired on the **Modify** column.

To find an existing entry, follow the steps below.

1. Click the **Find** button as shown in Figure 4-69.
2. Enter the MAC Address or IP Address.
3. Click the **Find** button in the page as shown in Figure 4-71.

Find IP & MAC Binding Entry

MAC Address:	<input type="text" value="00-14-5E-91-19-E3"/>		
IP Address:	<input type="text"/>		
ID	MAC Address	IP Address	Bind Link
2	00-14-5E-91-19-E3	192.168.1.56	<input checked="" type="checkbox"/> To page

Figure 4-71 Find IP & MAC Binding Entry

Click the **Enable All** button to make all entries enabled.

Click the **Delete All** button to delete all entries.

4.14.2 ARP List

To manage the computer, you could observe the computers in the LAN by checking the relationship of MAC address and IP address on the ARP list, and you could configure the items on the ARP list also. This page displays the ARP List; it shows all the existing IP & MAC Binding entries (shown in Figure 4-72).

ARP List				
ID	MAC Address	IP Address	Status	Configure
1	00-0A-EB-00-07-5F	192.168.1.55	Bound	Load Delete
2	00-14-5E-91-19-E3	192.168.1.56	Bound	Load Delete
3	00-19-66-80-54-2B	192.168.1.92	Unbound	Load Delete

Figure 4-72 ARP List

- **MAC Address** - The MAC address of the controlled computer in the LAN.
- **IP Address** - The assigned IP address of the controlled computer in the LAN.
- **Status** - Indicates whether or not the MAC and IP addresses are bound.
- **Configure** - Load or delete an item.
 - **Load** - Load the item to the IP & MAC Binding list.
 - **Delete** - Delete the item.

Click the **Bind All** button to bind all the current items, available after enable.

Click the **Load All** button to load all items to the IP & MAC Binding list.

Click the **Refresh** button to refresh all items.

 **Note:**

An item could not be loaded to the IP & MAC Binding list if the IP address of the item has been loaded before. Error warning will prompt as well. Likewise, "Load All" only loads the items without interference to the IP & MAC Binding list.

4.15 Dynamic DNS

Choose menu "**Dynamic DNS**", and you can configure the Dynamic DNS function.

The Router offers the **DDNS** (Dynamic Domain Name System) feature, which allows the hosting of a website, FTP server, or e-mail server with a fixed domain name (named by yourself) and a dynamic IP address, and then your friends can connect to your server by entering your domain name no matter what your IP address is. Before using this feature, you need to sign up for DDNS service providers such as www.comexe.cn, www.dyndns.org, or www.no-ip.com. The Dynamic DNS client service provider will give you a password or key.

4.15.1 Comexe.cn DDNS

If the dynamic DNS **Service Provider** you select is www.comexe.cn, the page will appear as shown in Figure 4-73.

DDNS

Service Provider: Comexe (www.comexe.cn) [Go to register...](#)

Domain Name:

Domain Name:

Domain Name:

Domain Name:

Domain Name:

User Name:

Password:

Enable DDNS

Connection Status: DDNS not launching!

Figure 4-73 Comexe.cn DDNS Settings

To set up for DDNS, follow these instructions:

1. Type the **Domain Name** received from your dynamic DNS service provider.
2. Type the **User Name** for your DDNS account.
3. Type the **Password** for your DDNS account.
4. Click the **Login** button to log in to the DDNS service.

Connection Status -The status of the DDNS service connection is displayed here.

Click **Logout** to log out of the DDNS service.

4.15.2 DynDNS.org DDNS

If the dynamic DNS **Service Provider** you select is www.dyndns.org, the page will appear as shown in Figure 4-74.

DDNS

Service Provider: Dyndns (www.dyndns.org) [Go to register...](#)

User Name: username

Password: ●●●●●●●●

Domain Name:

Enable DDNS

Connection Status: DDNS not launching!

Login Logout

Save

Figure 4-74 Dyndns.org DDNS Settings

To set up for DDNS, follow these instructions:

1. Type the **User Name** for your DDNS account.
2. Type the **Password** for your DDNS account.
3. Type the **Domain Name** you received from dynamic DNS service provider here.
4. Click the **Login** button to log in to the DDNS service.

Connection Status -The status of the DDNS service connection is displayed here.

Click **Logout** to logout of the DDNS service.

4.15.3 No-ip.com DDNS

If the dynamic DNS **Service Provider** you select is www.no-ip.com, the page will appear as shown in Figure 4-75.

Figure 4-75 No-ip.com DDNS Settings

To set up for DDNS, follow these instructions:

1. Type the **User Name** for your DDNS account.
2. Type the **Password** for your DDNS account.
3. Type the **Domain Name** you received from dynamic DNS service provider.
4. Click the **Login** button to log in the DDNS service.

Connection Status - The status of the DDNS service connection is displayed here.

Click **Logout** to log out the DDNS service.

4.16 System Tools

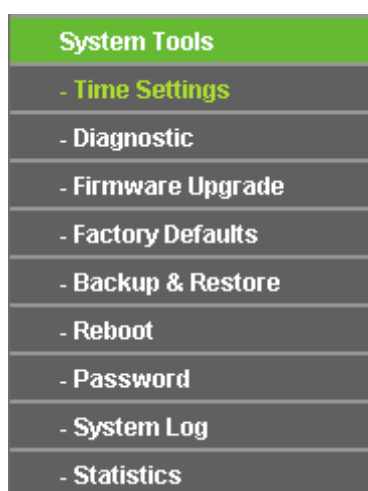


Figure 4-76 The System Tools menu

Choose menu “**System Tools**”, and you can see the submenus under the main menu: **Time**

Settings, Diagnostic, Firmware Upgrade, Factory Defaults, Backup & Restore, Reboot, Password, System Log and Statistics. Click any of them, and you will be able to configure the corresponding function. The detailed explanations for each submenu are provided below.

4.16.1 Time Setting

Choose menu “**System Tools**→**Time Setting**”, you can configure the time on the following screen.

Figure 4-77 Time settings

- **Time Zone** - Select your local time zone from this pull down list.
- **Date** - Enter your local date in MM/DD/YY into the right blanks.
- **Time** - Enter your local time in HH/MM/SS into the right blanks.
- **NTP Server Prior** - Enter the address for the NTP Server, then the Router will get the time from the NTP Server preferentially. In addition, the Router built-in some common NTP Servers, so it can get time automatically once it connects the Internet.

To configure the system manually:

1. Select your local time zone.
2. Enter date and time in the right blanks.
3. Click **Save** to save the configuration.

To configure the system automatically:

1. Select your local time zone.
2. Enter the IP address for **NTP Server Prior**.
3. Click the **Get GMT** button to get system time from Internet if you have connected to the Internet.

Note:

- 1) This setting will be used for some time-based functions such as firewall. You must specify

your time zone once you login to the router successfully, otherwise, these functions will not take effect.

- 2) The time will be lost if the router is turned off.
- 3) The router will obtain GMT automatically from Internet if it has already connected to Internet.

4.16.2 Diagnostic

Choose menu “**System Tools** → **Diagnostic**”, you can transact Ping or Traceroute function to check connectivity of your network in the following screen.

Diagnostic Tools

Diagnostic Parameters

Diagnostic Tool: Ping Traceroute

IP Address/ Domain Name:

Ping Count: (1-50)

Ping Packet Size: (4-1472 Bytes)

Ping Timeout: (100-2000 Milliseconds)

Traceroute Max TTL: (1-30)

Diagnostic Results

The Router is ready.

Figure 4-78 Diagnostic Tools

- **Diagnostic Tool** - Check the radio button to select one diagnostic tool.
 - **Ping** - This diagnostic tool troubleshoots connectivity, reachability, and name resolution to a given host or gateway.
 - **Traceroute** - This diagnostic tool tests the performance of a connection.

Note:

You can use ping/traceroute to test both numeric IP address or domain name. If pinging/tracerouting the IP address is successful, but pinging/tracerouting the domain

name is not, you might have a name resolution problem. In this case, ensure that the domain name you are specifying can be resolved by using Domain Name System (DNS) queries.

IP Address/Domain Name - Type the destination IP address (such as 202.108.22.5) or Domain name (such as http://www.tp-link.com)

- **Pings Count** - The number of Ping packets for a Ping connection.
- **Ping Packet Size** - The size of Ping packet.
- **Ping Timeout** - Set the waiting time for the reply of each Ping packet. If there is no reply in the specified time, the connection is overtime.
- **Traceroute Max TTL** - The max number of hops for a Traceroute connection.

Click **Start** to check the connectivity of the Internet.

The **Diagnostic Results** page displays the result of diagnosis.

If the result is similar to the following screen, the connectivity of the Internet is fine.

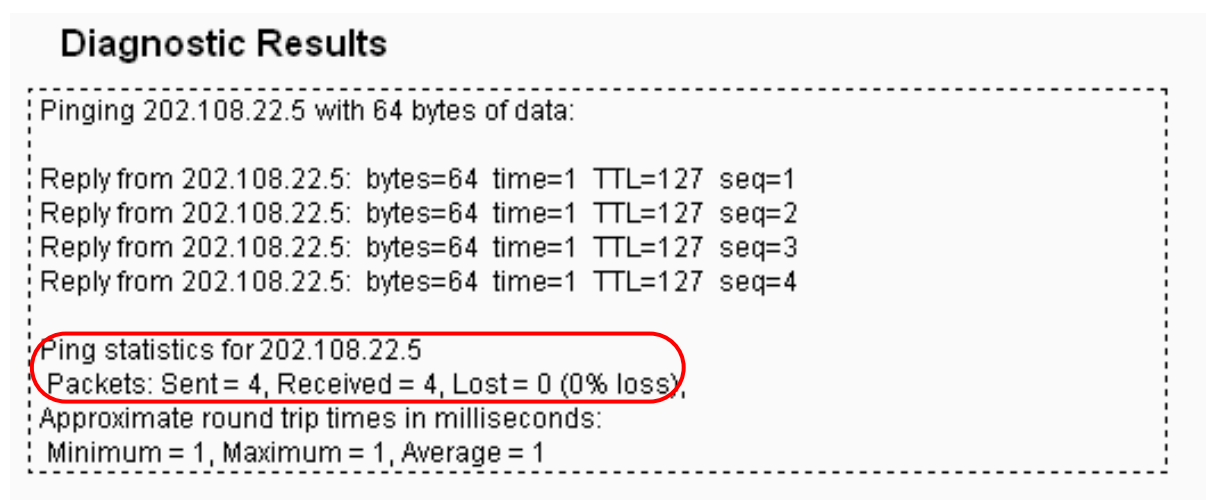


Figure 4-79 Diagnostic Results

Note:

Only one user can use this tool at one time. Options “Number of Pings”, “Ping Size” and “Ping Timeout” are used for **Ping** function. Option “Tracert Hops” are used for **Tracert** function.

4.16.3 Firmware Upgrade

Choose menu “**System Tools** → **Firmware Upgrade**”, you can update the latest version of firmware for the Router on the following screen.

Firmware Upgrade

File:

Firmware Version: 3.11.0 Build 100322 Rel.54548n

Hardware Version: MR3220 v1 00000000

Figure 4-80 Firmware Upgrade

- **Firmware Version** - This displays the current firmware version.
- **Hardware Version** - This displays the current hardware version. The hardware version of the upgrade file must accord with the Router's current hardware version.

To upgrade the Router's firmware, follow these instructions below:

1. Download a more recent firmware upgrade file from the TP-LINK website (<http://www.tp-link.com>).
2. Type the path and file name of the update file into the **File** field. Or click the **Browse** button to locate the update file.
3. Click the **Upgrade** button.

Note:

- 1) New firmware versions are posted at <http://www.tp-link.com> and can be downloaded for free. There is no need to upgrade the firmware unless the new firmware has a new feature you want to use. However, when experiencing problems caused by the Router rather than the configuration, you can try to upgrade the firmware.
- 2) When you upgrade the Router's firmware, you may lose its current configurations, so before upgrading the firmware please write down some of your customized settings to avoid losing important settings.
- 3) Do not turn off the Router or press the Reset button while the firmware is being upgraded, otherwise, the Router may be damaged.
- 4) The Router will reboot after the upgrading has been finished.

4.16.4 Factory Defaults

Choose menu "**System Tools** → **Factory Defaults**", and you can restore the configurations of the Router to factory defaults on the following screen

Factory Defaults

Click the following button to reset all configuration settings to their default values.

Restore

Figure 4-81 Restore Factory Default

Click the **Restore** button to reset all configuration settings to their default values.

- The default **User Name**: admin
- The default **Password**: admin
- The default **IP Address**: 192.168.1.1
- The default **Subnet Mask**: 255.255.255.0

 **Note:**

Any settings you have saved will be lost when the default settings are restored.

4.16.5 Backup & Restore

Choose menu “**System Tools** → **Backup & Restore**”, you can save the current configuration of the Router as a backup file and restore the configuration via a backup file as shown in Figure 4-75.

Backup & Restore

Backup:

File:

Figure 4-82 Backup & Restore Configuration

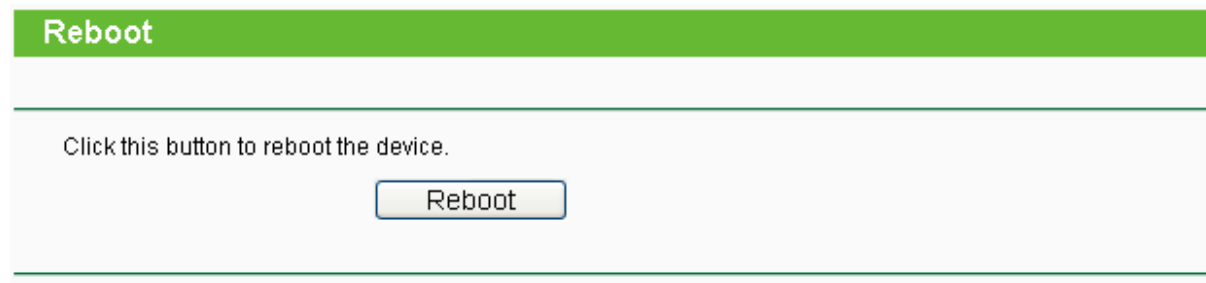
- Click the **Backup** button to save all configuration settings as a backup file in your local computer.
- To upgrade the Router's configuration, follow these instructions.
 - Click the **Browse...** button to locate the update file for the Router, or enter the exact path to the Setting file in the text box.
 - Click the **Restore** button.

 **Note:**

The current configuration will be covered by the uploading configuration file. The upgrade process lasts for 20 seconds and the Router will restart automatically. Keep the Router on during the upgrading process to prevent any damage.

4.16.6 Reboot

Choose menu “**System Tools** → **Reboot**”, you can click the **Reboot** button to reboot the Router via the next screen.



Reboot

Click this button to reboot the device.

Reboot

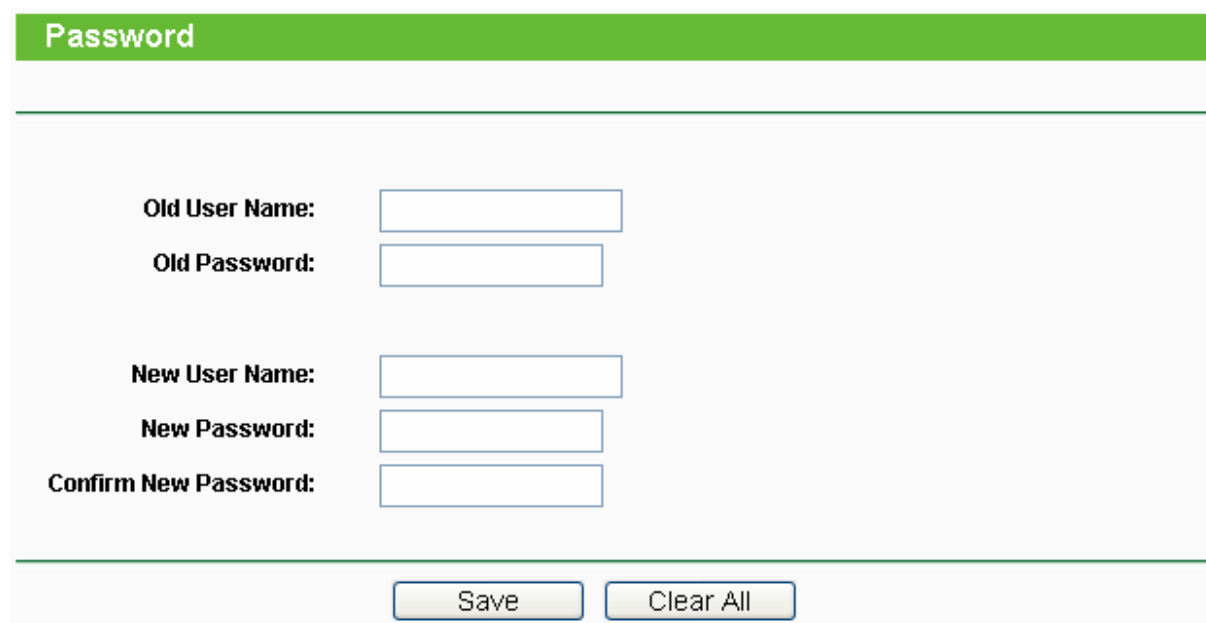
Figure 4-83 Reboot the Router

Some settings of the Router will take effect only after rebooting, which include

- Change the LAN IP Address (system will reboot automatically).
- Change the DHCP Settings.
- Change the Wireless configurations.
- Change the Web Management Port.
- Upgrade the firmware of the Router (system will reboot automatically).
- Restore the Router's settings to factory defaults (system will reboot automatically).
- Update the configuration with the file (system will reboot automatically).

4.16.7 Password

Choose menu “**System Tools** → **Password**”, you can change the factory default user name and password of the Router in the next screen as shown in Figure 4-84.



Password

Old User Name:

Old Password:

New User Name:

New Password:

Confirm New Password:

Save Clear All

Figure 4-84 Password

It is strongly recommended that you should change the factory default user name and password of the Router, because all users who try to access the Router's Web-based utility or Quick Setup will be prompted for the Router's default user name and password.

Note:

The new user name and password must not exceed 14 characters in length and not include any spaces. Enter the new Password twice to confirm.

Click the **Save** button when finished.

Click the **Clear All** button to clear all.

4.16.8 System Log

Choose menu “**System Tools** → **System Log**”, you can view the logs of the Router.

System Log

Auto Mail Feature: **Disabled** Mail Settings

Log Type: ALL Log Level: ALL

Index	Time	Type	Level	Log Content
1	1st day 01:11:47	OTHER	INFO	User clear system log.

Time = 2000-01-01 1:11:46 4307s
H-Ver = MR3220 v1 00000000 : S-Ver = 3.11.0 Build 100322 Rel.54548n
L = 192.168.1.1 : M = 255.255.255.0
3G : 3G = 0.0.0.0 : M = 0.0.0.0 : G = 0.0.0.0

Refresh Save Log Mail Log Clear Log

Previous Next Page 1

Figure 4-85 System Log

- **Auto Mail Feature** - Indicates whether auto mail feature is enabled or not.
- **Mail Settings** - Set the receiving and sending mailbox address, server address, validation information as well as the timetable for Auto Mail Feature, as shown in Figure 4-86.

Mail Account Settings

From:	<input type="text"/>
To:	<input type="text"/>
SMTP Server:	<input type="text"/>
<input type="checkbox"/>	Authentication
<input type="checkbox"/>	Enable Auto Mail Feature
<input checked="" type="radio"/>	Everyday, mail the log at <input type="text" value="18"/> : <input type="text" value="00"/>
<input type="radio"/>	Mail the log every <input type="text" value="48"/> hours
<input type="button" value="Save"/> <input type="button" value="Back"/>	

Figure 4-86 Mail Account Settings

- **From** - Your mail box address. The Router would connect it to send logs.
- **To** - Recipient's address. The destination mailbox where the logs would be received.
- **SMTP Server** - Your smtp server. It corresponds with the mailbox filled in the From field. You can log on the relevant website for Help if you are not clear with the address.
- **Authentication** - Most SMTP Server requires Authentication. It is required by most mailboxes that need User Name and Password to log in.

 **Note:**

Only when you select **Authentication**, do you have to enter the User Name and Password in the following fields.

- **User Name** - Your mail account name filled in the From field. The part behind @ is excluded.
- **Password** - Your mail account password.
- **Confirm The Password** - Enter the password again to confirm.
- **Enable Auto Mail Feature** - Select it to mail logs automatically. You could mail the current logs either at a specified time everyday or by intervals, but only one could be the current effective rule. Enter the desired time or intervals in the corresponding field as shown in Figure 4-86

Click **Save** to keep your settings.

Click **Back** to return to the previous page.

- **Log Type** - By selecting the log type, only logs of this type will be shown.

- **Log Level** - By selecting the log level, only logs of this level will be shown.
- **Refresh** - Refresh the page to show the latest log list.
- **Save Log** - Click to save all the logs in a txt file.
- **Mail Log** - Click to send an email of current logs manually according to the address and validation information set in Mail Settings.
- **Clear Log** - All the logs will be deleted from the Router permanently, not just from the page.

Click the **Next** button to go to the next page, or click the **Previous** button return to the previous page.

4.16.9 Statistics

Choose menu “**System Tools** → **Statistics**”, you can view the statistics of the Router, including total traffic and current traffic of the last Packets Statistic Interval.

Figure 4-87 Statistics

- **Current Statistics Status** - Enable or Disable. The default value is disabled. To enable, click the **Enable** button. If disabled, the function of DoS protection in Security settings will disabled.
- **Packets Statistics Interval (5-60)** - The default value is 10. Select a value between 5 and 60 seconds in the pull-down list. The Packets Statistic interval indicates the time section of the packets statistic.
- **Sorted Rules** - Choose how displayed statistics are sorted.

Select the **Auto-refresh** checkbox to refresh automatically.

Click the **Refresh** button to refresh immediately.

Click **Reset All** to reset the values of all the entries to zero.

Click **Delete All** to delete all entries in the table.

Statistics Table:

IP/MAC Address		The IP and MAC address are displayed with related statistics.
Total	Packets	The total number of packets received and transmitted by the Router.
	Bytes	The total number of bytes received and transmitted by the Router.
Current	Packets	The total number of packets received and transmitted in the last Packets Statistic interval seconds.
	Bytes	The total number of bytes received and transmitted in the last Packets Statistic interval seconds.
	ICMP Tx	The number of the ICMP packets transmitted to WAN per second at the specified Packets Statistics interval. It is shown like "current transmitting rate / Max transmitting rate".
	UDP Tx	The number of UDP packets transmitted to the WAN per second at the specified Packets Statistics interval. It is shown like "current transmitting rate / Max transmitting rate".
	TCP SYN Tx	The number of TCP SYN packets transmitted to the WAN per second at the specified Packets Statistics interval. It is shown like "current transmitting rate / Max transmitting rate".
Modify	Reset	Reset the value of the entry to zero.
	Delete	Delete the existing entry in the table.

There would be 5 entries on each page. Click **Previous** to return to the previous page and **Next** to the next page.

Appendix A: FAQ

1. How do I configure the Router to access Internet by ADSL users?

- 1) First, configure the ADSL Modem configured in RFC1483 bridge model.
- 2) Connect the Ethernet cable from your ADSL Modem to the WAN port on the Router. The telephone cord plugs into the Line port of the ADSL Modem.
- 3) Login to the Router, click the “Network” menu on the left of your browser, and click “WAN” submenu. On the WAN page, select “PPPoE” for WAN Connection Type. Type user name in the “User Name” field and password in the “Password” field, finish by clicking “Connect”.

WAN Connection Type: PPPoE Detect

PPPoE Connection:

User Name:

Password:

Figure A-1 PPPoE Connection Type

- 4) If your ADSL lease is in “pay-according-time” mode, select “Connect on Demand” or “Connect Manually” for Internet connection mode. Type an appropriate number for “Max Idle Time” to avoid wasting paid time. Otherwise, you can select “Auto-connecting” for Internet connection mode.

Wan Connection Mode:

Connect on Demand
Max Idle Time: minutes (0 means remain active at all times.)

Connect Automatically

Time-based Connecting
Period of Time: from : (HH:MM) to : (HH:MM)

Connect Manually
Max Idle Time: minutes (0 means remain active at all times.)

Disconnected!

Figure A-2 PPPoE Connection Mode

Note:

- 1) Sometimes the connection cannot be disconnected although you specify a time to Max Idle Time, since some applications is visiting the Internet continually in the background.
- 2) If you are a Cable user, please configure the Router following the above steps.

2. How do I configure the Router to access Internet by Ethernet users?

- 1) Login to the Router, click the "Network" menu on the left of your browser, and click "WAN" submenu. On the WAN page, select "Dynamic IP" for "WAN Connection Type", finish by clicking "Save".
- 2) Some ISPs require that you register the MAC Address of your adapter, which is connected to your cable/DSL Modem during installation. If your ISP requires MAC register, login to the Router and click the "Network" menu link on the left of your browser, and then click "MAC Clone" submenu link. On the "MAC Clone" page, if your PC's MAC address is proper MAC address, click the "Clone MAC Address" button and your PC's MAC address will fill in the "WAN MAC Address" field. Or else, type the MAC Address into the "WAN MAC Address" field. The format for the MAC Address is XX-XX-XX-XX-XX-XX. Then click the "Save" button. It will take effect after rebooting.

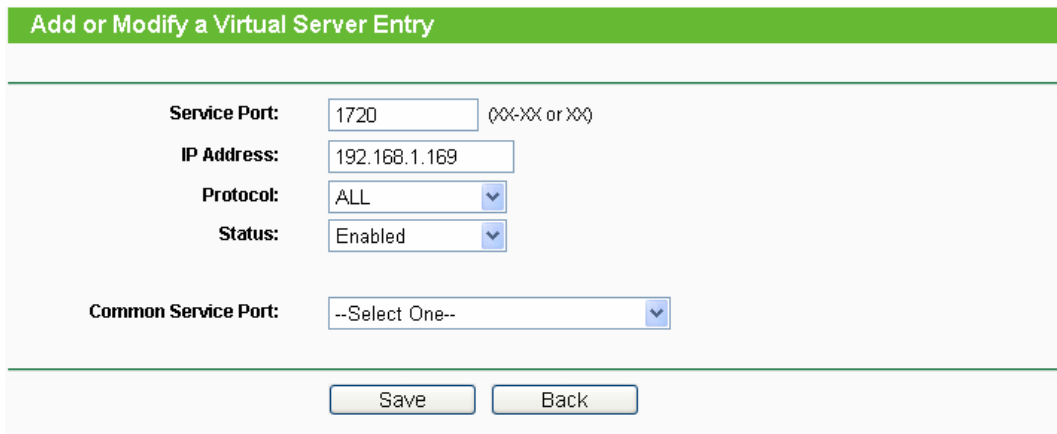
Figure A-3 MAC Clone

3. I want to use Netmeeting, what do I need to do?

- 1) If you start Netmeeting as a host, you don't need to do anything with the Router.
- 2) If you start as a response, you need to configure Virtual Server or DMZ Host and make sure the H323 ALG is enabled.
- 3) How to configure Virtual Server: Log in to the Router, click the "**Forwarding**" menu on the left of your browser, and click "**Virtual Servers**" submenu. On the "**Virtual Servers**" page, click **Add New....** Then on the "**Add or Modify a Virtual Server Entry**" page, enter "1720" for the "Service Port" blank, and your IP address for the "IP Address" blank, taking 192.168.1.169 for an example, remember to **Enable** and **Save**.

ID	Service Port	IP Address	Protocol	Status	Modify
1	21	192.168.1.101	ALL	Enabled	Modify Delete

Figure A-4 Virtual Servers



Add or Modify a Virtual Server Entry

Service Port: (XX-XX or XX)

IP Address:

Protocol:

Status:

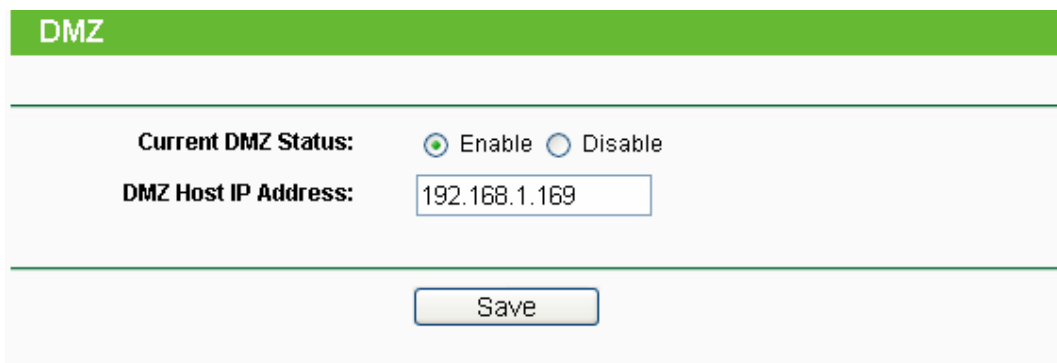
Common Service Port:

Figure A-5 Add or Modify a Virtual server Entry

 **Note:**

Your opposite side should call your WAN IP, which is displayed on the “Status” page.

- 4) How to enable DMZ Host: Log in to the Router, click the “**Forwarding**” menu on the left of your browser, and click “**DMZ**” submenu. On the “DMZ” page, click **Enable** radio button and type your IP address into the “DMZ Host IP Address” field, using 192.168.1.169 as an example, remember to click the **Save** button.



DMZ

Current DMZ Status: Enable Disable

DMZ Host IP Address:

Figure A-6 DMZ

- 5) How to enable H323 ALG: Log in to the Router, click the “**Security**” menu on the left of your browser, and click “**Basic Security**” submenu. On the “**Basic Security**” page, check the **Enable** radio button next to **H323 ALG**. Remember to click the **Save** button.

Basic Security

Firewall

SPI Firewall: Enable Disable

VPN

PPTP Passthrough: Enable Disable

L2TP Passthrough: Enable Disable

IPSec Passthrough: Enable Disable

ALG

FTP ALG: Enable Disable

TFTP ALG: Enable Disable

H323 ALG: Enable Disable

Save

Figure A-7 Basic Security

4. I want to build a WEB Server on the LAN, what should I do?

- 1) Because the WEB Server port 80 will interfere with the WEB management port 80 on the Router, you must change the WEB management port number to avoid interference.
- 2) To change the WEB management port number: Log in to the Router, click the "Security" menu on the left of your browser, and click "Remote Management" submenu. On the "Remote Management" page, type a port number except 80, such as 88, into the "Web Management Port" field. Click **Save** and reboot the Router.

Remote Management

Web Management Port:

Remote Management IP Address: (Enter 255.255.255.255 for all)

Save

Figure A-8 Remote Management

Note:

If the above configuration takes effect, to configure to the Router by typing <http://192.168.1.1:88> (the Router's LAN IP address: Web Management Port) in the address

field of the Web browser.

- 3) Log in to the Router, click the **"Forwarding"** menu on the left of your browser, and click the **"Virtual Servers"** submenu. On the **"Virtual Servers"** page, click **Add New...**, then on the **"Add or Modify a Virtual Server"** page, enter "80" into the blank next to the **"Service Port"**, and your IP address next to the **"IP Address"**, assuming 192.168.1.188 for an example, remember to **Enable** and **Save**.

Virtual Servers					
ID	Service Port	IP Address	Protocol	Status	Modify
1	21	192.168.1.101	ALL	Enabled	Modify Delete

Figure A-9 Virtual Servers

Add or Modify a Virtual Server Entry	
Service Port:	<input type="text" value="80"/> (00-255 or *)
IP Address:	<input type="text" value="192.168.1.188"/>
Protocol:	<input type="text" value="ALL"/> ▼
Status:	<input type="text" value="Enabled"/> ▼
Common Service Port:	<input type="text" value="--Select One--"/> ▼

Figure A-10 Add or Modify a Virtual server Entry

5. The wireless stations cannot connect to the Router.

- 1) Make sure the **"Wireless Router Radio"** is enabled.
- 2) Make sure that the wireless stations' SSID accord with the Router's SSID.
- 3) Make sure the wireless stations have right KEY for encryption when the Router is encrypted.
- 4) If the wireless connection is ready, but you can't access the Router, check the IP Address of your wireless stations.

Appendix B: Configuring the PCs

In this section, we'll introduce how to install and configure the TCP/IP correctly in Windows XP. First make sure your Ethernet Adapter is working, refer to the adapter's manual if needed.

1. Install TCP/IP component

- 1) On the Windows taskbar, click the **Start** button, point to **Settings**, and then click **Control Panel**.
- 2) Click the **Network and Internet Connections** icon, and then click on the **Network Connections** tab in the appearing window.
- 3) Right click the icon that showed below, select Properties on the prompt page.

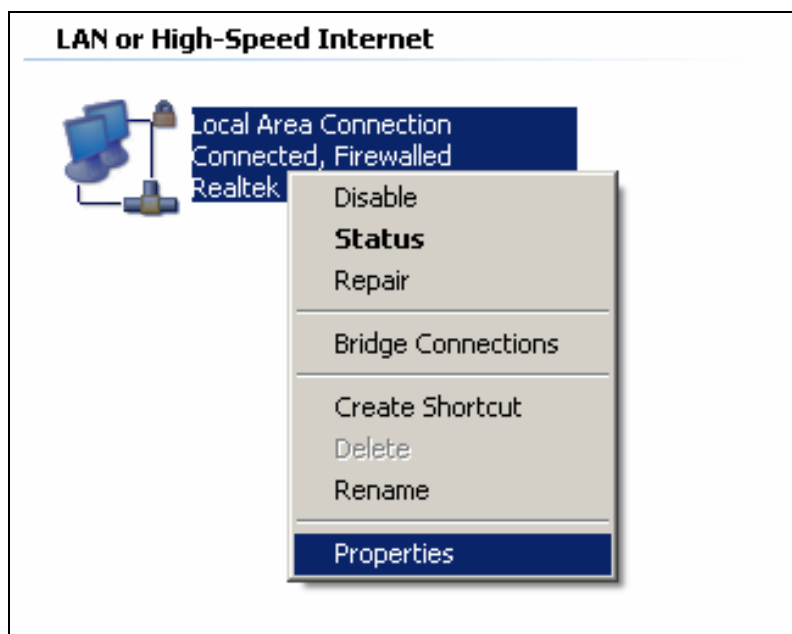


Figure B-1

- 4) In the prompt page that showed below, double click on the **Internet Protocol (TCP/IP)**.

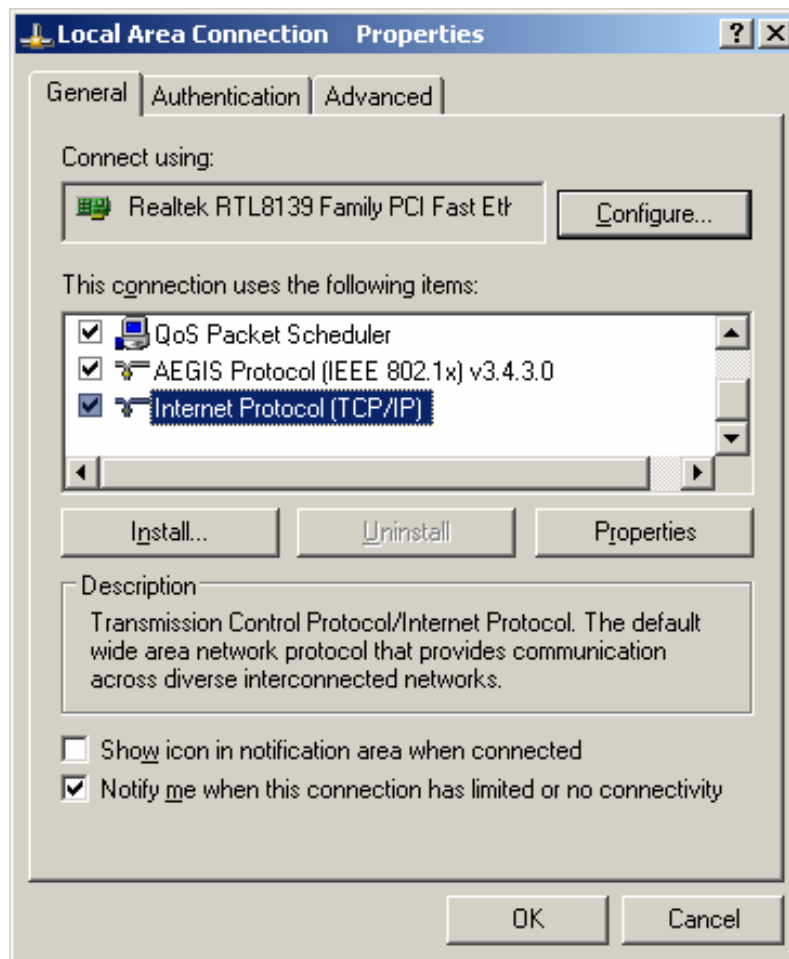


Figure B-2

- 5) The following **TCP/IP Properties** window will display and the **IP Address** tab is open on this window by default.

Now you have two ways to configure the **TCP/IP** protocol below:

➤ **Setting IP address automatically**

Select **Obtain an IP address automatically**, Choose **Obtain DNS server automatically**, as shown in the Figure below:

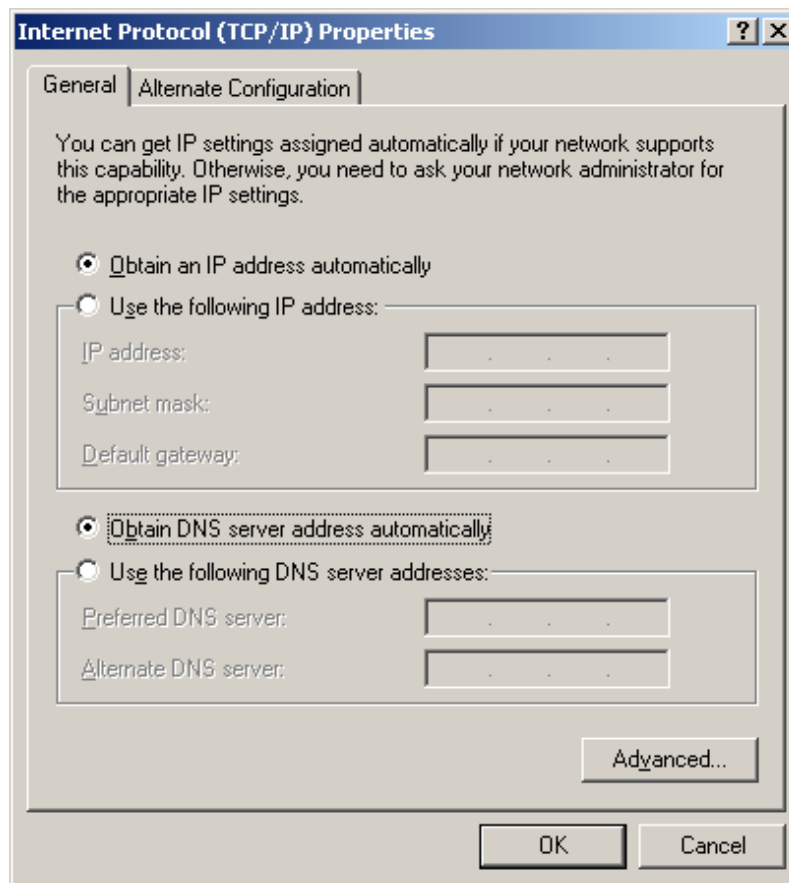


Figure B-3

➤ Setting IP address manually

- 1 Select **Use the following IP address** radio button. And the following items available
- 2 If the Router's LAN IP address is 192.168.1.1, type IP address is 192.168.1.x (x is from 2 to 254), and **Subnet mask** is 255.255.255.0.
- 3 Type the Router's LAN IP address (the default IP is 192.168.1.1) into the **Default gateway** field.
- 4 Select **Use the following DNS server addresses** radio button. In the **Preferred DNS Server** field you can type the DNS server IP address, which has been provided by your ISP

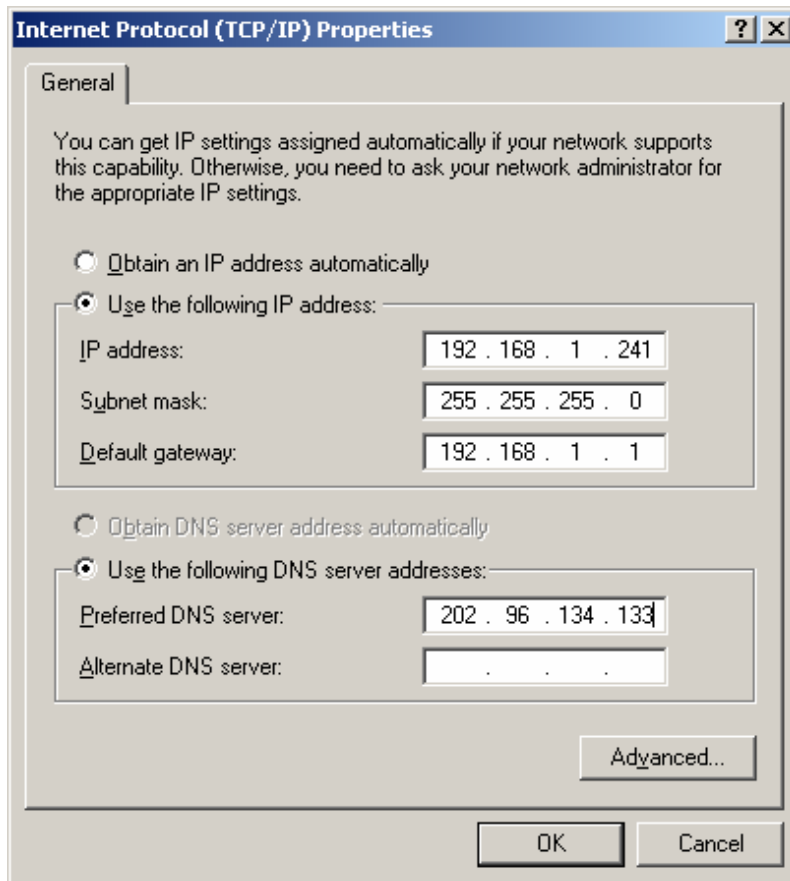


Figure B-4

Now click **OK** to keep your settings.

Appendix C: Specifications

General	
Standards	IEEE 802.3, 802.3u, 802.11b, 802.11g and 802.11n
Protocols	TCP/IP, PPPoE, DHCP, ICMP, NAT, SNTP
Ports	One 10/100M Auto-Negotiation WAN RJ45 port, Four 10/100M Auto-Negotiation LAN RJ45 ports supporting Auto MDI/MDIX
Cabling Type	10BASE-T: UTP category 3, 4, 5 cable (maximum 100m) EIA/TIA-568 100Ω STP (maximum 100m)
	100BASE-TX: UTP category 5, 5e cable (maximum 100m) EIA/TIA-568 100Ω STP (maximum 100m)
LEDs	PWR, SYS, WLAN, LAN (1-4), WAN, 3G, QSS
Safety & Emissions	FCC, CE
Wireless	
Frequency Band	2.4~2.4835GHz
Radio Data Rate	11n: up to 150Mbps (Automatic) 11g: 54/48/36/24/18/12/9/6M (Automatic) 11b: 11/5.5/2/1M (Automatic)
Frequency Expansion	DSSS (Direct Sequence Spread Spectrum)
Modulation	DBPSK, DQPSK, CCK, OFDM, 16-QAM, 64-QAM
Security	WEP/WPA/WPA2/WPA2-PSK/WPA-PSK
Sensitivity @PER	130M: -68dBm@10% PER 108M: -68dBm@10% PER; 54M: -68dBm@10% PER 11M: -85dBm@8% PER; 6M: -88dBm@10% PER 1M: -90dBm@8% PER
Antenna Gain	5dBi
Environmental and Physical	
Temperature.	Operating : 0°C~40°C (32°F~104°F)
	Storage: -40°C~70°C(-40°F~158°F)
Humidity	Operating: 10% ~ 90% RH, Non-condensing
	Storage: 5% ~ 90% RH, Non-condensing

Appendix D: Glossary

- **802.11n** - 802.11n builds upon previous 802.11 standards by adding MIMO (multiple-input multiple-output). MIMO uses multiple transmitter and receiver antennas to allow for increased data throughput via spatial multiplexing and increased range by exploiting the spatial diversity, perhaps through coding schemes like Alamouti coding. The Enhanced Wireless Consortium (EWC) [3] was formed to help accelerate the IEEE 802.11n development process and promote a technology specification for interoperability of next-generation wireless local area networking (WLAN) products.
- **802.11b** - The 802.11b standard specifies a wireless networking at 11 Mbps using direct-sequence spread-spectrum (DSSS) technology and operating in the unlicensed radio spectrum at 2.4GHz, and WEP encryption for security. 802.11b networks are also referred to as Wi-Fi networks.
- **802.11g** - specification for wireless networking at 54 Mbps using direct-sequence spread-spectrum (DSSS) technology, using OFDM modulation and operating in the unlicensed radio spectrum at 2.4GHz, and backward compatibility with IEEE 802.11b devices, and WEP encryption for security.
- **DDNS (Dynamic Domain Name System)** - The capability of assigning a fixed host and domain name to a dynamic Internet IP Address.
- **DHCP (Dynamic Host Configuration Protocol)** - A protocol that automatically configure the TCP/IP parameters for the all the PC(s) that are connected to a DHCP server.
- **DMZ (Demilitarized Zone)** - A Demilitarized Zone allows one local host to be exposed to the Internet for a special-purpose service such as Internet gaming or videoconferencing.
- **DNS (Domain Name System)** - An Internet Service that translates the names of websites into IP addresses.
- **Domain Name** - A descriptive name for an address or group of addresses on the Internet.
- **DSL (Digital Subscriber Line)** - A technology that allows data to be sent or received over existing traditional phone lines.
- **ISP (Internet Service Provider)** - A company that provides access to the Internet.
- **MTU (Maximum Transmission Unit)** - The size in bytes of the largest packet that can be transmitted.
- **NAT (Network Address Translation)** - NAT technology translates IP addresses of a local area network to a different IP address for the Internet.
- **PPPoE (Point to Point Protocol over Ethernet)** - PPPoE is a protocol for connecting remote hosts to the Internet over an always-on connection by simulating a dial-up

connection.

- **SSID** - A **S**ervice **S**et **I**dentification is a thirty-two character (maximum) alphanumeric key identifying a wireless local area network. For the wireless devices in a network to communicate with each other, all devices must be configured with the same SSID. This is typically the configuration parameter for a wireless PC card. It corresponds to the ESSID in the wireless Access Point and to the wireless network name.
- **WEP (Wired Equivalent Privacy)** - A data privacy mechanism based on a 64-bit or 128-bit or 152-bit shared key algorithm, as described in the IEEE 802.11 standard.
- **Wi-Fi** - A trade name for the 802.11b wireless networking standard, given by the Wireless Ethernet Compatibility Alliance (WECA, see <http://www.wi-fi.net>), an industry standards group promoting interoperability among 802.11b devices.
- **WLAN (Wireless Local Area Network)** - A group of computers and associated devices communicate with each other wirelessly, which network serving users are limited in a local area.

Appendix E: Compatible 3G/3.75G USB Modem

The UMTS/HSPA/EVDO USB modems we've tested in the field are listed below. You can find the latest compatibility list in our website: <http://www.tp-link.com>.

Compatible 3G/3.75G USB Modem (Tested in the field)

HUAWEI	EC169, E156, E156C, E156B, E156G, E169, E180, E220, E226, E270, E272, E1756, E1550, E1762, K3565, EC122, EC1260, EC1261
ZTE	MF100, MF102, MF626, MF627, MF637U, MF645, AC581, AC2736, AC581, MU351
NOVATEL	U760
NOKIA	CS-10
ONDA	MSA501HS
ALCATEL	X060S, X070S
4G SYSTEM	XSStick W12
CSL	U1-TF
SAMSUNG	SGH-H128