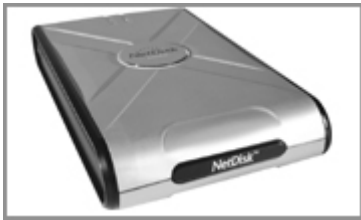


# Quick Install Guide

---

For Windows 2000 / XP  
Software Version 2.3



**NetDisk™ & NetDisk Mini™**

Powered by  NDAS Technology



**XIMETA, Inc.**  
15251 Alton Parkway  
Irvine, CA 92618

### **Software Release Statement**

NetDisk Quick Install Guide for Windows XP and Windows 2000, Software Version 2.3, Released November 2003, Made in the U.S.A.

### **Trademark Statement**

NetDisk, NetDisk Mini and XIMETA are trademarks of XIMETA, Inc., registered in the U.S.A and other countries. All other trademarks are the property of their respective owners.

### **Copyright Statement**

Copyright © 2003 XIMETA, Inc. All rights reserved world. Reproduction, translation, transformation or adaptation in any manner without prior written permission of XIMETA, Inc. is strictly prohibited.

### **License Statement**

The software described in this document is furnished under a license agreement. The software may be used only in accordance with the terms of the license agreement

### **Warranty Statement**

XIMETA, Inc. reserves the right to revise this publication and to make changes to the content hereof without the obligation of XIMETA, Inc. to notify any person of such revision or changes. XIMETA, Inc. provides this publication "as is" without warranty of any kind, either express or implied, including but not limited to the implied warranties of merchantability or fitness for a particular purpose.

## **Introduction**

**Congratulations on your purchase of NetDisk / NetDisk Mini - Network Direct Attached Storage (NDAS) Solution!**

### **NetDisk Quick Install Guide**

This NetDisk Quick Install Guide is intended to help you install the product quickly and easily.

This NetDisk Quick Install Guide shows you how to install a NetDisk / NetDisk Mini onto your Personal Computer or Ethernet Network and begin using it immediately.

This NetDisk Quick Install Guide is intended for users who need to install and support one or more NetDisk / NetDisk Mini on their Personal Computer or Ethernet Network.

This NetDisk Quick Install Guide assumes the user has a basic understanding of Personal Computers and Networks. For detailed instructions on installation, configuration and operation, please consult the NetDisk User Manual.

### **NetDisk and NetDisk Mini Models Covered By This NetDisk Quick Install Guide**

This NetDisk Quick Install Guide includes information on the following models:

#### **NetDisk**

- NDU10-80
- NDU10-120
- NDU10-160

#### **NetDisk Mini**

- NDU20-40

### **Main Features of NetDisk and NetDisk Mini**

- No power adaptor needed with NetDisk Mini when connected to your pc/laptop through USB
- Advanced Network Storage, Network Direct Attached Storage - NDAS
- External and Portable Network Storage Device
- Multiple Interfaces - Ethernet and USB 2.0
- Aggregation
- Backup
- Mirroring

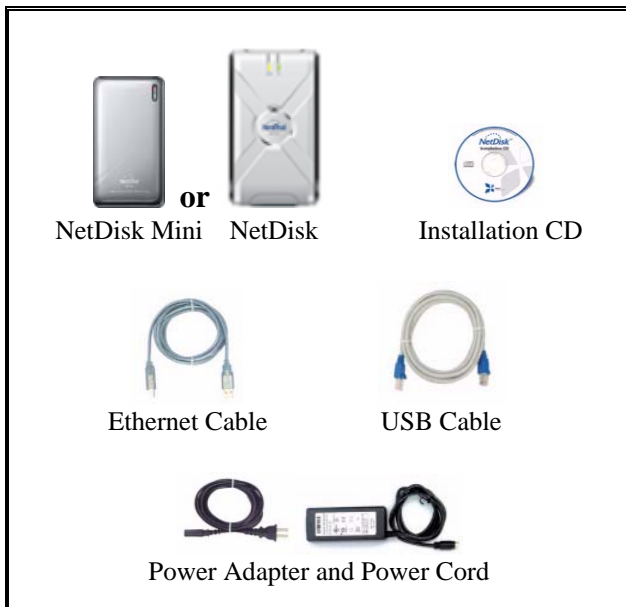
**NetDisk and NetDisk Mini Modes**

- NDAS Mode**  
 In NDAS Mode, NetDisk / NetDisk Mini is directly attached to a 100MB/ Full Duplex Fast Ethernet Switch or Wireless Access Point. Each user on the network can use NetDisk / NetDisk Mini as if it was a local disk drive.
- Ethernet Mode**  
 In Ethernet Mode, NetDisk / NetDisk Mini is directly attached to a PC's Ethernet Port using a crossover CAT5 cable, without the need of a switch.
- USB 2.0 Mode**  
 In USB 2.0 Mode, NetDisk / NetDisk Mini is directly attached to a PC's USB 2.0 Port.

In addition, each user can enjoy all of the advanced NDAS features such as aggregation, back-up, mirroring and flexible expansion

**Package Contents**

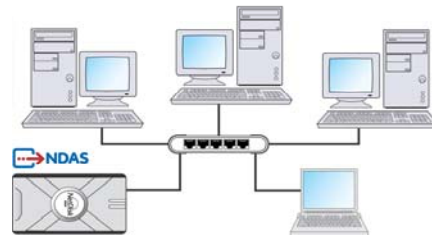
The following items are included in the NetDisk / NetDisk Mini package:



**Requirements**

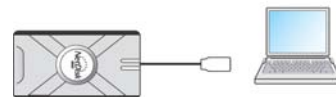
**Hardware Requirements**

**NDAS Mode**



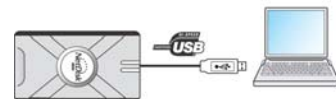
- Fast Ethernet -100BASE-T / Full Duplex / 802.3u, for wired configuration.
- Wireless - 802.11a, 802.11b or 802.11g, for wireless configuration.

**Ethernet Mode**



- Direct connection to PC's Ethernet Port – 100BASE-T / Full Duplex / 802.3u.
- Requires crossover CAT5 cable (not included).

**USB 2.0 Mode**



- Direct connection to PC's USB 2.0 Port

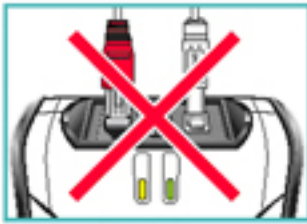
**Software Requirements**



May need to install USB 2.0 driver included in installation CD.

### Cable Installation

#### Warning



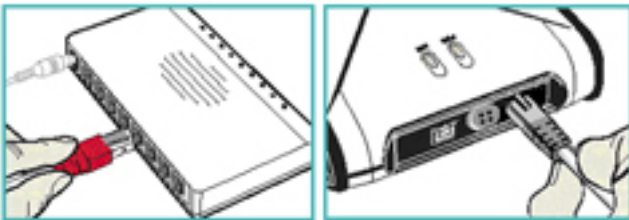
- Do not connect USB cable and Ethernet cable at the same time.
- Newer NetDisk does not have dip switches on them. However, NetDisk has the capability of automatically recognizing NetDisk Mode without the dip switch. In such case, please skip step 1 (dip switch setting) from the NetDisk Cable Installation.

### NetDisk Cable Installation

#### NDAS Mode

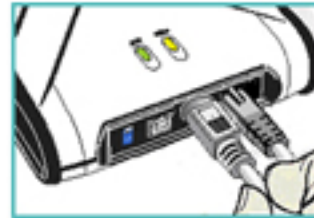
- Flip both dip switches down for NDAS Mode.

- Connect NetDisk to your switch (100 Base-TX) with included Ethernet cable (straight through).



- For wireless users - Connect NetDisk to your wireless router or access point with included Ethernet cable.

- Make sure the power connector is connected firmly.



#### Ethernet Mode

- Flip both dip switches down for NDAS Mode.

- Connect NetDisk directly to your PC's Ethernet port using crossover cable (not included).



- Make sure the power connector is connected firmly.



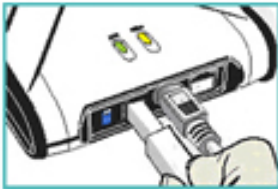
USB Mode

- Flip both dip switches up for USB Mode.

- Connect NetDisk directly to your PC's USB port using included USB cable.



- Make sure the power connector is connected firmly.



NetDisk Mini Cable Installation

NDAS Mode

- Connect NetDisk Mini to your switch (100 Base-TX) with included Ethernet cable (straight through).



- For wireless users - Connect NetDisk Mini to your wireless router or access point with included Ethernet cable.

- Make sure the power connector is connected firmly.



Ethernet Mode

- Connect NetDisk Mini directly to your PC's Ethernet port using crossover cable (not included).



- Make sure the power connector is connected firmly.



USB Mode

- Connect NetDisk Mini directly to your PC's USB port using included USB cable.



- No power adaptor needed for NetDisk Mini when connected to your pc/laptop through USB

**Note:** From this point forward, *NetDisk* will be used to represent both NetDisk and NetDisk Mini.

### NetDisk Software Installation

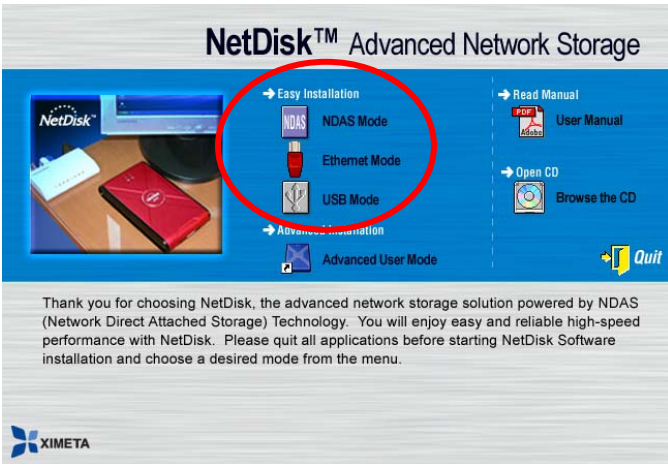
Installation of NetDisk software is simple and easy. Insert included “NetDisk Installation CD” to your CD-ROM Drive and select the NetDisk Mode you want. Easy and simple instructions will guide you through the installation.

#### First Time Users

It is strongly recommended that the first time NetDisk user select **Easy Installation** from the main menu.

#### For Advanced Users

Once you are comfortable with installing and using NetDisk, you may choose to use advanced installation. You can pick and choose features you want to install, select **Advanced Installation** from the main menu.



#### NDAS Mode Easy Installation

- Select “**NDAS Mode Easy Installation**” and click “**next**” button. The instructions will guide you through the installation.

#### Ethernet Mode Easy installation

- Select “**Ethernet Mode Easy Installation**” and click “**next**” button. The instructions will guide you through the installation

#### USB 2.0 Mode Easy Installation


- Select “**USB 2.0 Mode Easy Installation**” and click “**next**” button. The instructions will guide you through the installation.

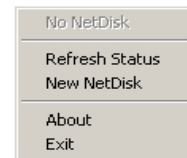
### NetDisk Administrator Tool

When software installation is completed, you will find a NetDisk Launcher Icon on your desktop screen and a NetDisk Administrator Tool icon on the system tray.

- NetDisk Launcher activates and loads the NetDisk Administrator Tool onto the system tray.
- NetDisk Administrator Tool performs the following functions:
  - Refresh NetDisk Status
  - Add / Register a NetDisk
  - Display Software Version
  - Enable Read / Write Access
  - Enable Read Only Access
  - Disable a NetDisk
  - Edit NetDisk Name
  - Display NetDisk Properties

#### Add / Register a New NetDisk / NetDisk Mini




- Click **NetDisk™ Administrator Tool Icon**  located on the bottom right corner of your screen.



- Click **New NetDisk**.
- **Add a NetDisk / NetDisk Mini**

- NetDisk ID and Write Key can be found underneath the NetDisk case.
- NetDisk ID and Write Key do not contain the **letter O**. Please use the **number 0**, for all 0’s.



-  NetDisk Name is optional
-  Enter the correct NetDisk ID
-  Write Key is needed to write to the NetDisk

- Click **Add**.

• **NetDisk Administrator**

- Confirms the NetDisk you just registered.
- If the **Write Key** was entered in the previous step, the NetDisk is registered as **Read / Write Mode**.
- If the **Write Key** was not entered in the previous step, the NetDisk is registered as **Read Only Mode**.

**Read/Write Mode**

**Read Only Mode**



• **Found New Hardware Wizard.**

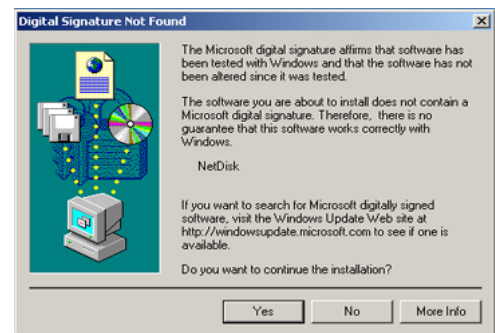
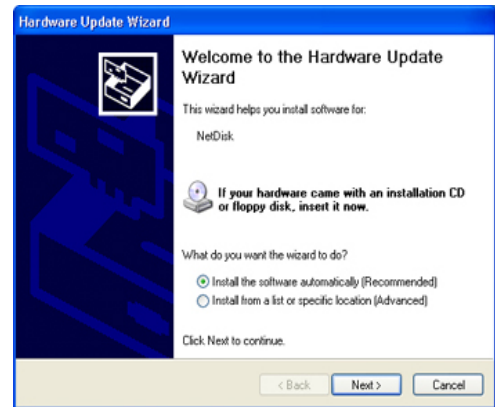
- This window may or may not appear.
- If the window appears, follow the instructions and install the new NetDisk.

**Windows XP**




Please click "Continue Anyway"

**Windows 2000**



Please click "Yes"

• **Registration is completed.**

- Click **NetDisk™ Administrator Tool**  to see the registered NetDisk.

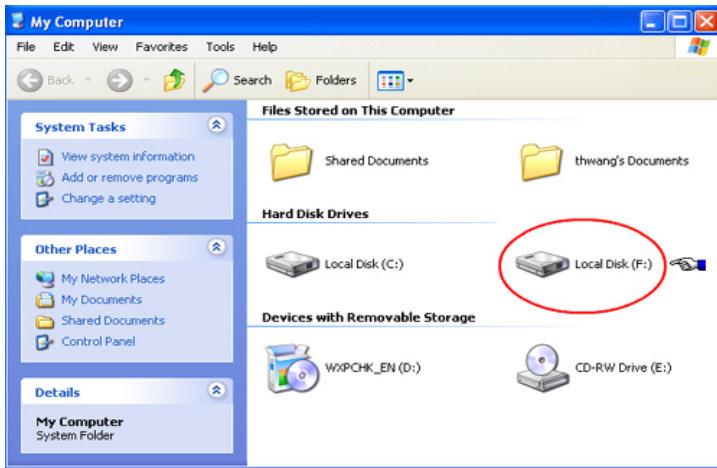
**Read/Write Mode**

**Read Only Mode**



### How to Use NetDisk

Now that you have successfully installed NetDisk, it's time to familiarize yourself on using the NetDisk. NetDisk is located in My Computer as a local drive. Driver name and driver letter will be different for each PC.




Here are examples of uses for NetDisk.

- You can use NetDisk like a local drive on your PC.
- Drag and drop files to NetDisk.
- Copy and paste data to NetDisk.
- Make and delete folders.
- Share files and folders.
- Backup files to NetDisk.

NetDisk provides users with two basic functions; Read Only and Read/Write.

- **Read Only Mode**
  - Any number of users can read from a NetDisk.
- **Read/Write Mode**
  - Only one user can write to a specific NetDisk at a time.
  - No other users can write to NetDisk, until the current Read/Write access owner passes the Read/Write access to another user.

### Changing from Read/Write to Read Only

- Click **NetDisk™ Administrator Tool**  and select the NetDisk you want to change from **Read/Write to Read Only**.
- Select **Enable Read Only**.




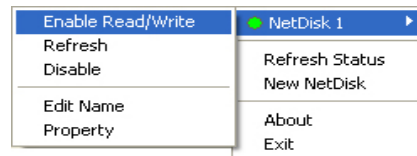
- The **Blue Circle** will change to a **Green Circle** indicating **Read Only Mode**.



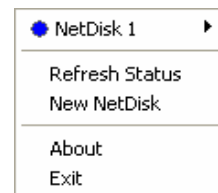
- **Blue Circle** indicates Read/Write Mode
- **Green Circle** indicates Read Only Mode

### Changing from Read Only to Read/Write

- Click **NetDisk™ Administrator Tool**  and select the NetDisk you want to change from **Read Only to Read/Write**.
- Select **Enable Read/Write**.



- The **Green Circle** will change to a **Blue Circle** indicating **Read/Write Mode**.



- **Blue Circle** indicates Read/Write Mode
- **Green Circle** indicates Read Only Mode



## Using NetDisk in Mac OS and Windows Environment

Mac OS and Windows users can easily share the same NetDisk on a local area network.

- Connect NetDisk to a 100BASE-T / Full Duplex Switch.
- NetDisk and computers that need to use NetDisk must be on the same subnet.
- On Windows, install Windows Install CD and on Mac, install Mac Install CD.
- Register NetDisk onto Windows and Mac computers.

NetDisk default file system is NTFS File System Format. To share NetDisk in a Mac OS and Windows Environment, NetDisk must be formatted in FAT32 File System Format. NetDisk must be formatted to FAT32 from Windows.

- **Formatting NetDisk to FAT32 File System from Windows**
  - Right click **My Computer**.
  - Select **Manage**.
  - Double click **Disk Management**.
  - Find NetDisk from the button window and right click on it.
  - Select **Delete Partition**.
  - **Delete primary partition** window may appear. Click **Yes**.
  - Wait until partition is deleted. It will be indicated by the word **Unallocated**.
  - Right click unallocated NetDisk and select **New Partition**.
  - **Welcome to the New Partition Wizard** will appear. Click **Next**.
  - Select **Primary Partition**. Click **Next**.
  - Type 32768 into **Partition size in MB**. Click **Next**.
  - For drive letter, use assigned drive letter or select a new drive letter. Click **Next**.
  - Select **Format this partition with the following settings**.
    - Select **FAT32** for **File system**
    - Select **Default** for **Allocation unit size**.
    - **Volume label** is optional.
    - Check **Perform a quick format**. Click **Next**.
  - **Completing the New Partition Wizard** will appear. Click **Finish**.

- A section of NetDisk will be partitioned in to 32 GB FAT32.
- Repeat **Formatting NetDisk to FAT32 File System from Windows** until rest of the unallocated portion of the NetDisk is formatted.

## Changing FAT32 File System Format to NTFS File System Format

- Right click **My Computer**.
- Select **Manage**.
- Double click **Disk Management**.
- Find NetDisk from the button window and right click on it.
- Select **Delete Partition**.
- **Delete primary partition** window may appear. Click **Yes**.
- Delete all the partitions.
- Once all of the partitions are deleted, right click unallocated NetDisk and select **New Partition**.
- **Welcome to the New Partition Wizard** will appear. Click **Next**.
- Select **Primary Partition**. Click **Next**.
- Use the given **Partition size in MB**. Click **Next**.
- For drive letter, use assigned drive letter or select a new drive letter. Click **Next**.
- Select **Format this partition with the following settings**.
  - Select **NTFS** for **File system**
  - Select **Default** for **Allocation unit size**.
  - **Volume label** is optional.
  - Check **Perform a quick format**. Click **Next**.
- **Completing the New Partition Wizard** will appear. Click **Finish**.

## Additional Information and Assistance

For additional information, frequently asked questions or troubleshooting help, please refer to the NetDisk User Manual.

Assistance is also available by contacting XIMETA, Inc. Whenever you contact XIMETA, Inc. for technical support, please have the following information available:

- Product Name
- Model
- Serial Number
- Software Version

**How to Contact XIMETA, Inc.:**

**Technical Support by Telephone:**

Technical Support: 949-753-7983  
Fax: 949-753-7887

**Technical Support by E-Mail:**

Our e-mail address for technical support is  
[support@ximeta.com](mailto:support@ximeta.com).

**Technical Support on the Internet:**

For the latest information on NetDisk / NetDisk Mini, visit our  
website at [www.ximeta.com](http://www.ximeta.com).