

11Mbps Wireless Access Point

Quick User Guide

Package Contents

- WLAN Access Point
- 5V@800mA power adapter
- USB Cable
- Ethernet Cable
- Quick User's Guide

Frequency Notice

This device complies with part 15 of the FCC Rules. Operation is subject to the following two conditions:

1. This device may not cause harmful interference.
2. This device must accept any interference received, including interference that may cause undesired operation.

Note: This equipment has been tested and found to comply with the limits for a Class B digital device, pursuant to part 15 of the FCC Rules. These limits are designed to provide reasonable protection against harmful interference in a residential installation. This equipment generates, uses, and can radiate radio frequency energy and, if not installed and used in accordance with the instructions, may cause harmful interference to radio communications. However, there is no guarantee that interference will not occur in a particular installation. If this equipment does cause harmful interference to radio or television reception, which can be determined by turning the equipment off and on, the user is encouraged to try to correct the interference by one or more of the following measures: (1) Reorient or relocate the receiving antenna, (2) Increase the separation between the equipment and receiver, (3) Connect the equipment into an outlet on a circuit different from that to which the receiver is connected, (4) Consult the dealer or an experienced radio/TV technician for help.

Federal Communications Commission (FCC) Radiation Exposure Statement

This equipment complies with FCC radiation exposure limits set forth for an uncontrolled environment. In order to avoid the possibility of exceeding the FCC radio frequency exposure limits, human proximity to the antenna shall not be less than 20 cm (8 inches) during normal operation.

Setting the IP Address of the Access Point

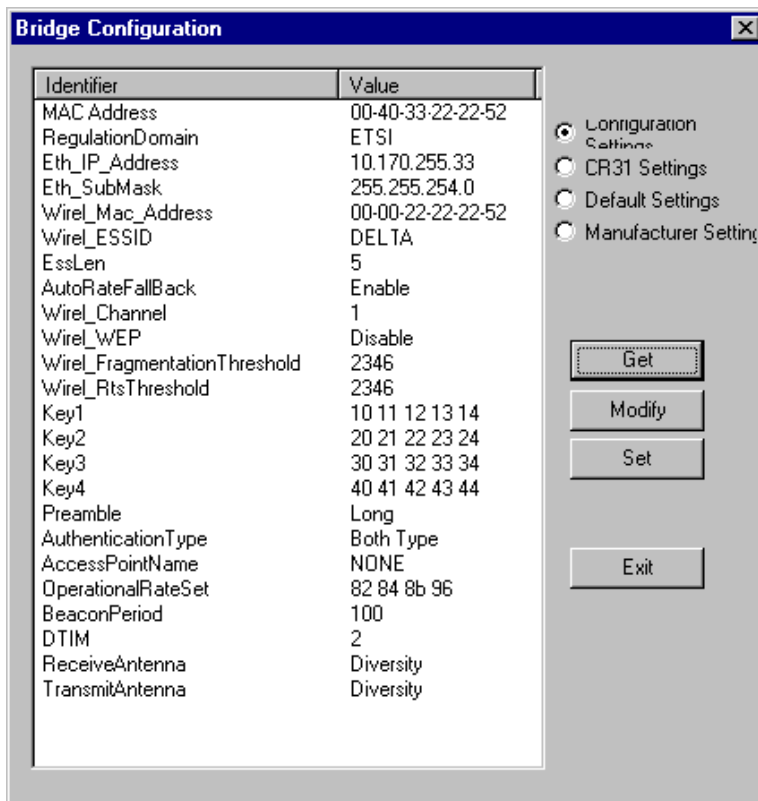
The first step in using the WLAN Access Point is to set its IP Address. In order to set the Access Point IP address users use the Bridge Utility Application via USB port. Before executing the Bridge Utility Application, user needs to install USB driver.

How to Install the USB driver

1. Plug the Access Point USB port into the USB port of a notebook or desktop PC.
2. The Add New Hardware Wizard/Found New Hardware Wizard indicates that a new network device has been recognized.
3. Insert the driver CD into the CD-ROM. Find the driver in the driver folder of the CD and specify the location to the Wizard.
4. Finally, a dialog will inform you that the installation is completed.

Using the Bridge Utility Application to do the IP address setting

1. Plug USB cable to the Access Point USB port.
2. Run the Bridge Utility Application (DFU utility) and select the Configuration button.
3. Bridge Configuration window will appear. Users need to select the “Configuration setting” and press the “Get” button.
4. To set a new IP address, select the parameter “Eth_IP_Address”. Press the “Modify” button and type the new IP address.
5. Press the “Set” button for the changes to take effect.



Access Point Configuration

The Access Point Configuration can be done either through the Ethernet port by using the SNMP Manager application, or the USB port by using the Bridge Utility application.

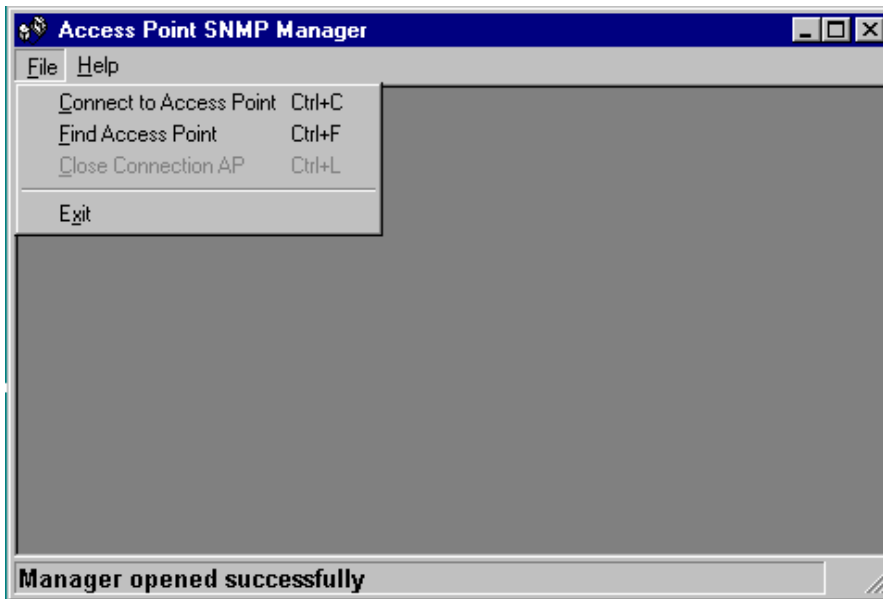
In order to configuration the Access Point through the Ethernet port, users must first install the SNMP Manager application, which is a tool used for the remote configuration of the Access Point through the Ethernet port.

How to Install the SNMP Manager

1. Find the “SNMPManager.zip” file in the Utility folder of your CD.
2. Extract the “SNMPManager.zip” file.
3. Run the program “setup.exe”.
4. Follow the instructions of the set-up program. Finally, a window appears indicating the completion of the installation.

Using the SNMP Manager when users know the IP address

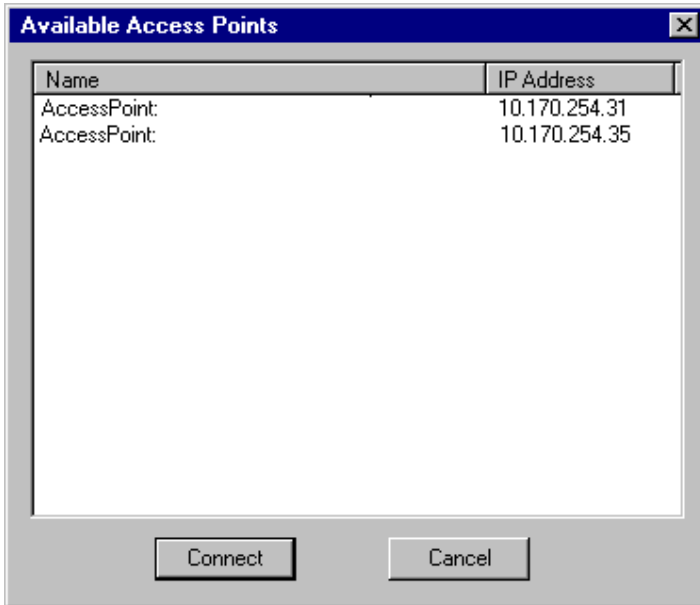
1. On the Start menu, Select SNMP Manager.



2. Select “Connect Access Point” option on the “File” menu.
3. A **Connect the Access Point** windows appears.
4. Enter the IP address and “public” at the community field. Then press OK.
5. Users are ready to do the configuration.

Using the SNMP Manager when users do not know the IP address

1. On the Start menu, Select SNMP Manager.
2. Select "Find Access Point" option on the "File" menu.
3. The available Access Points are listed on the windows.
4. Select one of the available Access Points and press "Connect".
5. Users are ready to do the configuration.



Access Point Firmware Upgrade

The firmware upgrade can be done either through the Ethernet port by using the TFTP Client Utility or the USB port by using the DFU Utility

Using the Ethernet Port

1. Install the TFTP Client.
2. Find the "TFTP.zip" file in the "Utility" folder of your CD.
3. Extract the "TFTP.zip" file.
4. Run the program "setup.exe".
5. Follow the instructions of the set-up program to complete the installation of the TFTP Client Utility.
6. On the Start menu, select TFTP Client
7. Type the IP address of the Access point.
8. Browse for the file "bridge.rom".
9. Press the "Download image" button to download the firmware.
10. If the firmware download procedure is completed successfully, the "Firmware download has been completed" message shows.

Using the USB Port

1. Plug USB Cable into the USB port of the Access Point.
2. Run the Bridge Utility Application (DFU utility).
3. Browse for the file "bridge.rom".
4. Press the "Download" button.