

Quick Installation Guide

English

1. Before getting started...

Register at www.fox.com

Required components

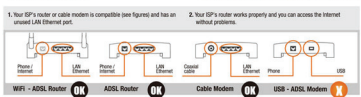
Before installing La Fonera, check that you have the correct components to join FOX.

- Required connectors (ADSL, cable, etc.)
- AC adapter for La Fonera
- Router ADSL or cable modem from your Internet Service Provider (ISP)
- Wireless devices, either a notebook PC or another device with a wireless adapter

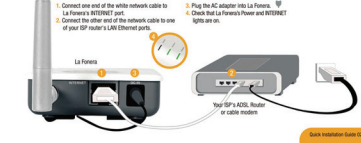
For additional information and to read the warranty, please check the Quick Installation Guide here: <http://www.fox.com/foxtutorials/QIG.html>

3. Install La Fonera

You don't need to be an expert to set up your current connection before installing La Fonera. Just check that:



Connecting La Fonera



4. Connect to FOX

For those devices capable of connecting to a wireless network card, it must have a wireless network card to be able to connect to FOX networks.

Register La Fonera

Go to the "Network Information Connection" link on your computer. If you don't see the "Network Information" button (B), click on the "Network Information" button (A) to register your device.

WiFi Community

WiFi users you a specific form for you to register your access point in the FOX Community.

More Help

For any additional questions, visit the FOX FAQ at www.fox.com or send us an email at support@fox.com

5. Install La Fonera

Area de instalar La Fonera a lo que debe tener en cuenta cada uno de los componentes que se conectan a ella.

Conectar ahora La Fonera

1. Conecte un extremo del cable de red Ethernet a La Fonera en su único puerto Ethernet.

Conecte ahora La Fonera

1. Conecte un extremo del cable de red Ethernet a La Fonera en su único puerto Ethernet.

Conecte ahora La Fonera

1. Conecte un extremo del cable de red Ethernet a La Fonera en su único puerto Ethernet.

Guide d'Installation Rapide

Français

1. Avant de commencer...

Inscrivez-vous sur www.fox.com

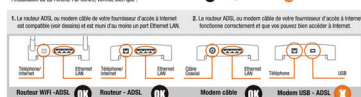
De quel matériel avez-vous besoin ?

- Connecteur requis (ADSL, câble, etc...)
- Adaptateur secteur pour La Fonera
- Routeur ADSL ou modem câble à partir de votre fournisseur d'accès Internet (FAI)
- Un dispositif sans fil équipé d'un adaptateur WiFi (ordinateur portable, PDA, smartphone, etc...)

Plus d'informations et pour lire la garantie, veuillez consulter le Guide d'Installation Rapide ici: <http://www.fox.com/foxtutorials/QIG.html>

3. Installation de La Fonera

Avant d'installer La Fonera, assurez-vous d'avoir le matériel requis pour votre connexion actuelle.



Connectez maintenant La Fonera



4. Connectez-vous à FOX

For those devices capable of connecting to a wireless network card, it must have a wireless network card to be able to connect to FOX networks.

Register La Fonera

Go to the "Network Information Connection" link on your computer. If you don't see the "Network Information" button (B), click on the "Network Information" button (A) to register your device.

WiFi Community

WiFi users you a specific form for you to register your access point in the FOX Community.

More Help

For any additional questions, visit the FOX FAQ at www.fox.com or send us an email at support@fox.com

5. Installer La Fonera

Area de instalar La Fonera a lo que debe tener en cuenta cada uno de los componentes que se conectan a ella.

Conectar ahora La Fonera

1. Conecte un extremo del cable de red Ethernet a La Fonera en su único puerto Ethernet.

Conecte ahora La Fonera

1. Conecte un extremo del cable de red Ethernet a La Fonera en su único puerto Ethernet.

Conecte ahora La Fonera

1. Conecte un extremo del cable de red Ethernet a La Fonera en su único puerto Ethernet.

Guía de Instalación Rápida

Español

1. Antes de comenzar la instalación...

Regístrate en www.fox.com

Qué equipo necesitas

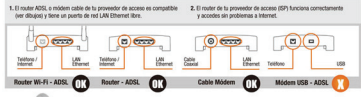
Antes de instalar La Fonera, comprueba que tienes el equipo necesario para unirte a FOX.

- Conectores de banda ancha (ADSL, cable, etc.)
- Adaptador de corriente para La Fonera
- Router ADSL o módem cable de tu proveedor de acceso a Internet
- Dispositivos inalámbricos, bien un portátil u otro equipo con adaptador inalámbrico

Para más información y consultar la garantía, por favor consulta el Guía de Instalación Rápida aquí: <http://www.fox.com/foxtutorials/QIG.html>

3. Instala La Fonera

Area de instalar La Fonera a lo que debe tener en cuenta cada uno de los componentes que se conectan a ella.



Conecta ahora La Fonera



4. Conéctate a FOX

For those devices capable of connecting to a wireless network card, it must have a wireless network card to be able to connect to FOX networks.

Register La Fonera

Go to the "Network Information Connection" link on your computer. If you don't see the "Network Information" button (B), click on the "Network Information" button (A) to register your device.

WiFi Community

WiFi users you a specific form for you to register your access point in the FOX Community.

More Help

For any additional questions, visit the FOX FAQ at www.fox.com or send us an email at support@fox.com

5. Instala La Fonera

Area de instalar La Fonera a lo que debe tener en cuenta cada uno de los componentes que se conectan a ella.

Conectar ahora La Fonera

1. Conecte un extremo del cable de red Ethernet a La Fonera en su único puerto Ethernet.

Conecte ahora La Fonera

1. Conecte un extremo del cable de red Ethernet a La Fonera en su único puerto Ethernet.

Conecte ahora La Fonera

1. Conecte un extremo del cable de red Ethernet a La Fonera en su único puerto Ethernet.

Kurzanleitung zur Installation

Deutsch

1. Vor der Installation

Registrieren Sie sich auf www.fox.com

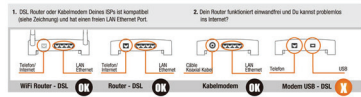
Was brauchen Sie?

- Benötigte Anschlüsse (ADSL, Kabel, etc.)
- Netzteil für La Fonera
- DSL Router oder Kabelmodem von Ihrem Internet Service Provider (ISP)
- Ein drahtloses Netzwerkgerät (Notebook PC, PDA, Smartphone, etc.)

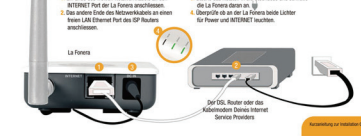
Weitere Informationen und zur Garantie, besuchen Sie bitte den Schnellinstallationsführer hier: <http://www.fox.com/foxtutorials/QIG.html>

3. La Fonera installieren

Area de instalar La Fonera a lo que debe tener en cuenta cada uno de los componentes que se conectan a ella.



Verbinde nun Deine La Fonera



4. Verbinde Dich mit FOX

For those devices capable of connecting to a wireless network card, it must have a wireless network card to be able to connect to FOX networks.

Register La Fonera

Go to the "Network Information Connection" link on your computer. If you don't see the "Network Information" button (B), click on the "Network Information" button (A) to register your device.

WiFi Community

WiFi users you a specific form for you to register your access point in the FOX Community.

More Help

For any additional questions, visit the FOX FAQ at www.fox.com or send us an email at support@fox.com

5. Die Fonera installieren

Area de instalar La Fonera a lo que debe tener en cuenta cada uno de los componentes que se conectan a ella.

Conectar ahora La Fonera

1. Conecte un extremo del cable de red Ethernet a La Fonera en su único puerto Ethernet.

Conecte ahora La Fonera

1. Conecte un extremo del cable de red Ethernet a La Fonera en su único puerto Ethernet.

Conecte ahora La Fonera

1. Conecte un extremo del cable de red Ethernet a La Fonera en su único puerto Ethernet.

FCC Regulations:

●This device complies with part 15 of the FCC Rules. Operation is subject to the following two conditions: (1) This device may not cause harmful interference, and (2) this device must accept any interference received, including interference that may cause undesired operation.

●This device has been tested and found to comply with the limits for a Class B digital device, pursuant to Part 15 of the FCC Rules. These limits are designed to provide reasonable protection against harmful interference in a residential installation. This equipment generates, uses and can radiated radio frequency energy and, if not installed and used in accordance with the instructions, may cause harmful interference to radio communications. However, there is no guarantee that interference will not occur in a particular installation. If this equipment does cause harmful interference to radio or television reception, which can be determined by turning the equipment off and on, the user is encouraged to try to correct the interference by one or more of the following measures:

- Reorient or relocate the receiving antenna.
- Increase the separation between the equipment and receiver.
- Connect the equipment into an outlet on a circuit different from that to which the receiver is connected.
- Consult the dealer or an experienced radio/TV technician for help.

Changes or modifications not expressly approved by the party responsible for compliance could void the user's authority to operate the equipment.

●This device complies with FCC radiation exposure limits set forth for an uncontrolled environment. In order to avoid the possibility of exceeding the FCC radio frequency exposure limits, human proximity to the antenna shall not be less than 20cm (8 inches) during normal operation.

●The antenna(s) used for this transmitter must not be co-located or operating in conjunction with any other antenna or transmitter.