

TOTO LINK
The Smartest Network Device

Quick Installation Guide

AC1200 Wireless Dual Band Gigabit Router

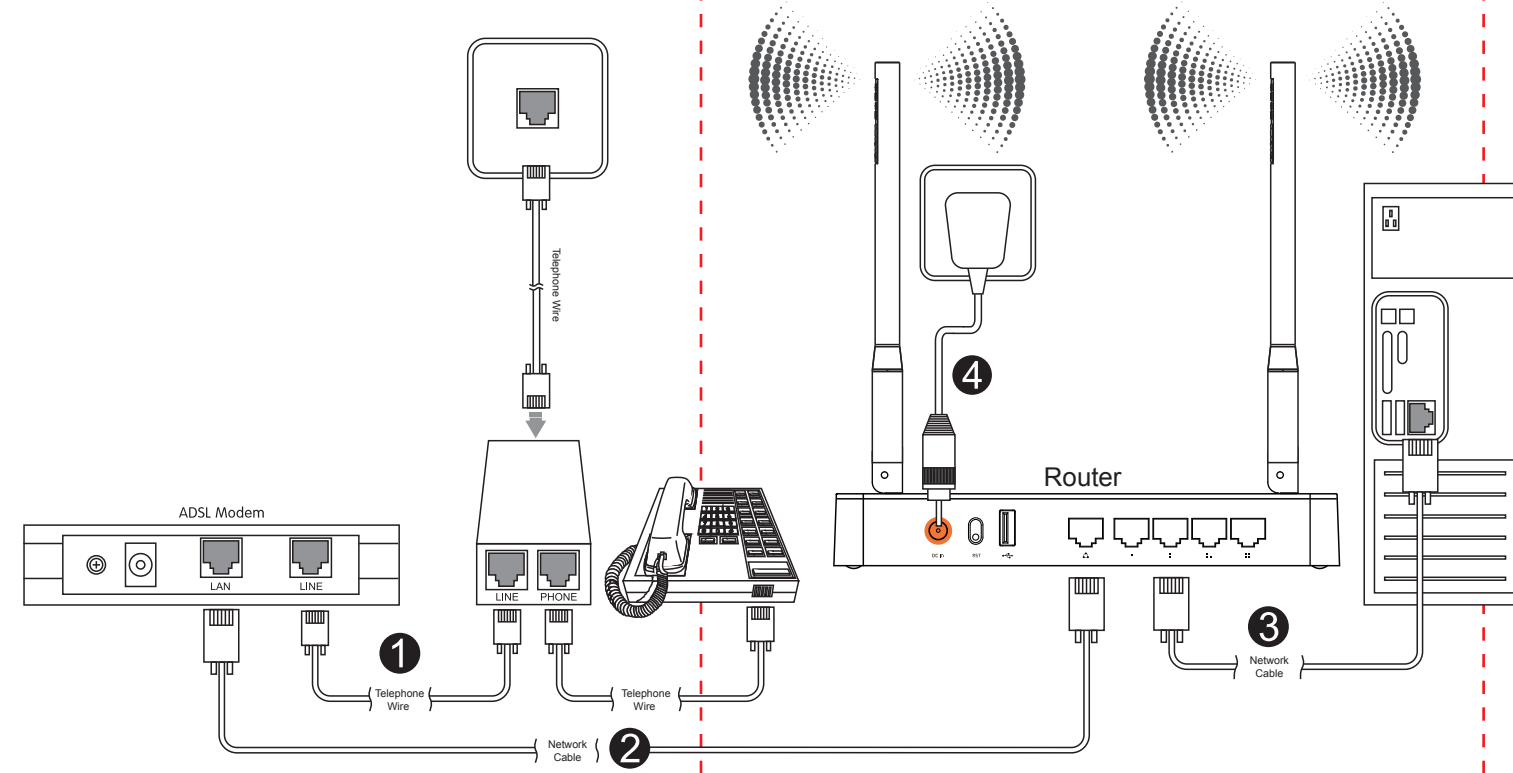
Suitable for: A3002RU

V1.15.11

Copyright © by TOTOLINK All rights reserved. Website: <http://www.totolink.net>
Information in this document is subject to change without prior notice.

1 Hardware Installation

If you access Internet by ADSL, please comply with step 1, 2, 3 and 4 in below diagram in correct order; if you access Internet by residential broadband, please comply with step 2, 3 and 4 to connect the WAN port of your router with the residential broadband directly.



LED Indicators

POWER	This indicator lights blue when the router powered on, otherwise it is off.
CPU	When the router powered on, this indicator keeps lighting blue.
2.4G	This indicator lights blue when the 2.4G wireless connection enabled.
5G	This indicator lights blue when the 5G wireless connection enabled.
WAN	When the WAN port is connected successfully the indicator lights blue. While transmitting or receiving data through the WAN port the indicator blinks blue.
1/2/3/4LAN	When the LAN port has a successful connection, the indicator lights blue. While transmitting or receiving data through the LAN port the indicator blinks blue.
USB	This indicator lights blue when you have plugged a USB device on the router.

NOTE:

- Please disconnect the power adapter and all cables during thunderstorm weather;
- Keep away from heat source and keep well ventilated;
- Please pay attention to the waterproofing and moisture-proof when storing, transporting and running.
- The power supply must reach the rated current and power.
- Put the router in flat places.

2 Set Up PC

Windows 7 For Windows Vista or Windows 7 Operating System, please comply with following steps to set up.

- Right click "Internet" on desktop, choose "Properties"—>"Change Adapter Settings", then right click "Local Area Connection", choose "Properties"
- Double-click "Internet Protocol Version 4 (TCP/IPv4)"
- Choose "Obtain an IP address automatically" and "Obtain DNS server address automatically", click "OK"; go back to previous interface and click "OK"

Windows 8 For Windows 8 Operating System, please comply with following steps to set up.

- Click "Start—Control Panel—Network and Sharing Center—Change adapter setting", right-click "Ethernet", and choose "Properties".
- Double-click "Internet Protocol Version 4 (TCP/IPv4)".
- Choose "Obtain an IP address automatically" and "Obtain DNS server address automatically", click "OK"; go back to previous interface and click "OK".

3 Set Up Router

Please set up the router following below steps.

- Run the Web browser.
- Type 192.168.1.1 in the Web Browser address bar, then press Enter key.
- Input the User Name and Password, then click Login button (The default Username and Password is admin).
- Now you have logged into the Easy Setup interface.
- Choose the WAN connection type and enter the parameters provided by your ISP.
- Here we take PPPoE as an example. User Name and Password are required.
- For 5G Wireless Settings, you can setup SSID (network name) and encryption.
- By default, no encryption selected. Here WPA2 Mixed is recommended for you to protect your network, then type in your password.
- You can setup the 2.4G Wireless Setting referring to 5G Wireless Setting.
- On this page, you can also enable or disable IPTV. If enable this function, please enter the VLAN ID and choose correct IPTV port. Then click Apply to save the settings.

4 Wireless Network Connection

- Right-click "My Network Places", click "Properties"
- Right-click "Wireless Network Connection", and click "View Available Wireless Networks"
- Confirm the wireless network SSID name, choose one that you would like to connect, then click "Connect"
- Input the encryption key and click "Connect"
- Have connected wireless network, you can access Internet through wireless mode.

11 Wait for a while, Internet connected successfully! Please click finish.

you have successful entered all the information required to setup your router

12 Now the router's Status interface turns up, it shows connected type and IP address & DNS you get.

5 FAQ

1 How to reset the router to default settings?

- Please make sure your router's power is on regularly, then press the RST button for about 10s.
- Loosen the button until your router's LED lights all flashing, then you have reset your router to default settings.

2 Forget the password?

Please reset your router to default settings firstly, and set a new password. The default Username and Password is admin. The default IP is 192.168.1.1.

FCC warning:

This device complies with Part 15 of the FCC Rules. Operation is subject to the following two conditions: (1) this device may not cause harmful interference, and (2) this device must accept any interference received, including interference that may cause undesired operation.

changes or modifications not expressly approved by the party responsible for compliance could void the user's authority to operate the equipment. NOTE: This equipment has been tested and found to comply with the limits for a Class B digital device, pursuant to Part 15 of the FCC Rules. These limits are designed to provide reasonable protection against harmful interference to a residential installation. This equipment generates, uses and can radiate radio frequency energy and, if not installed and used in accordance with the instructions, may cause harmful interference to radio communications. However there is no guarantee that interference will not occur in a particular installation. If this equipment does cause harmful interference to radio or television reception, which can be determined by turning the equipment off and on, the user is encouraged to try to correct the interference by one or more of the following measures:

- Reorient or relocate the receiving antenna.
- Increase the separation between the equipment and receiver.
- Connect the equipment into an outlet on a circuit different from that to which the receiver is connected.
- Consult the dealer or an experienced radio/TV technician for help.

RF Exposure Statement
This equipment complies with FCC radiation exposure limits set forth for an uncontrolled environment. This transmitter must not be co-located or operating in conjunction with any other antenna or transmitter.

This equipment should be installed and operated with minimum distance 20cm between the radio & your body.