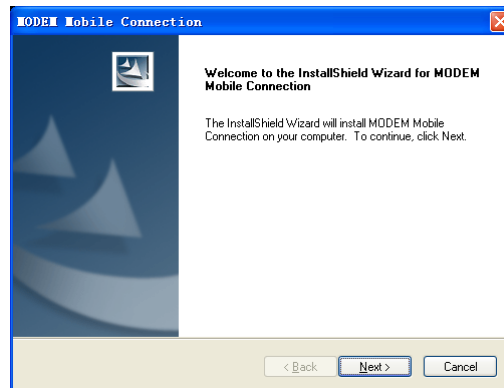


*ZTE MODEM Mobile Connection  
User Manual*

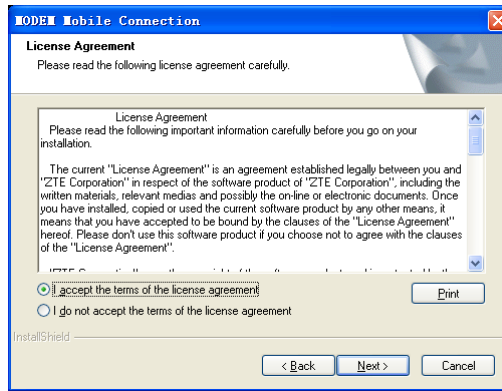
# 1 Software Installation

## 1.1 Installation Instruction

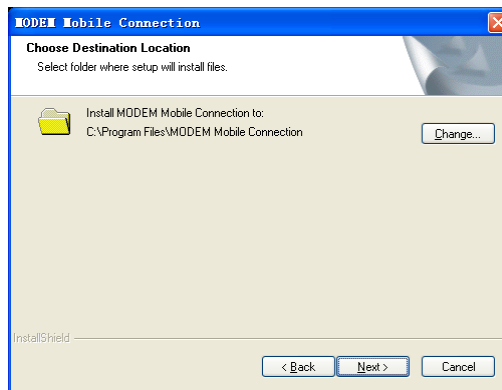
The following installation interface will show how to install the software.



- Recommend you to exit other programs, and then click **"Next"**.

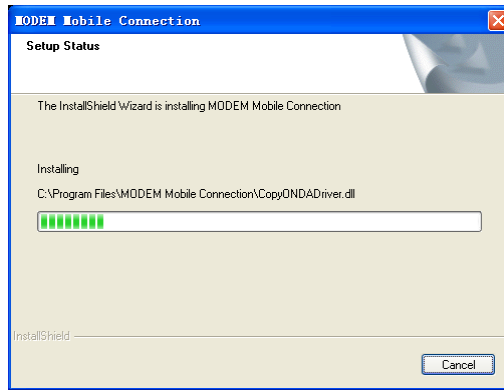


- Read the agreement carefully. If you agree, choose “I accept the terms of the license agreement”, and then click “Next”.

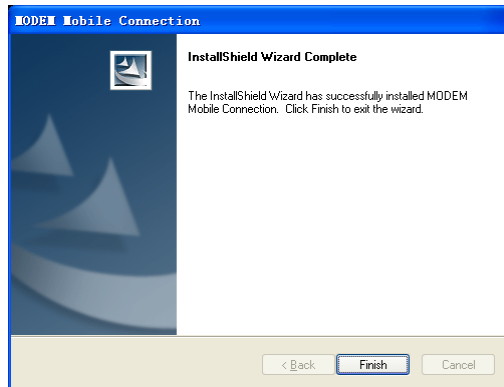


- Select the folder that you want to install the software by

pressing **“Change”**, and then click **“Next”**.



- The system show the installation progress, wait a minute and the following screen will show up:



- Click **“Finish”** to complete the installation.

**Note:** If you have problems with installation after the upper operation, please contact the service provider.

After the installation, select the **“Start → Programs”** and there will be a **“MODEM Mobile Connection”** program group, which includes **“MODEM Mobile Connection”** and **“MODEM Uninstall”**. There will be a Shortcut icon like below on the desktop.




### 1.2 Run the Application Software

After the modem is correctly connected, click the **“Start → Programs → MODEM Mobile Connection →MODEM Mobile Connection”** menu on the laptop or desktop PC to run the application software.

Or double click the shortcut icon, to run the application software.



After modem initialized, main interface appears. When the standby icon  appears in the taskbar, the modem can work properly.


### 1.3 Hardware Uninstall

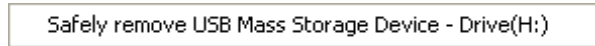
Close the software application then remove the hardware following the procedure below.

- Firstly click the “**close**” button on the menu, and then click “**OK**” to close the software.



- Then remove your Device safely.  
When you use a MicroSDHC card in the modem:

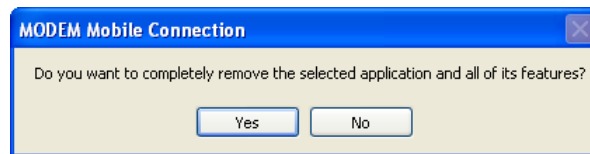
- Please left click the icon  in the Windows system tray bar. Then a menu will popup and indicates the USB devices list as below:

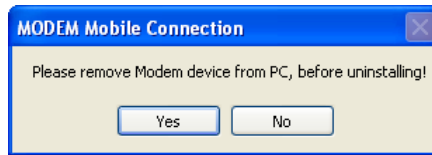


- Select “Safely remove the USB disk” which is relevant to the MicroSDHC card.
- Pull out the Device directly, if you want to disconnect the modem from the laptop or desktop PC.

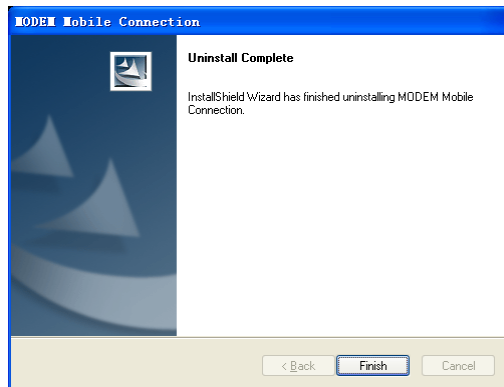
#### 1.4 Software Uninstall

- Close the application program before the software uninstalls.
- Click “**Start**→ **Programs**→ **MODEM Mobile Connection** → **MODEM Uninstall**” menu on the laptop or desktop PC.





- Click "**Yes**" according to the indication, then the system begins to uninstall programs.



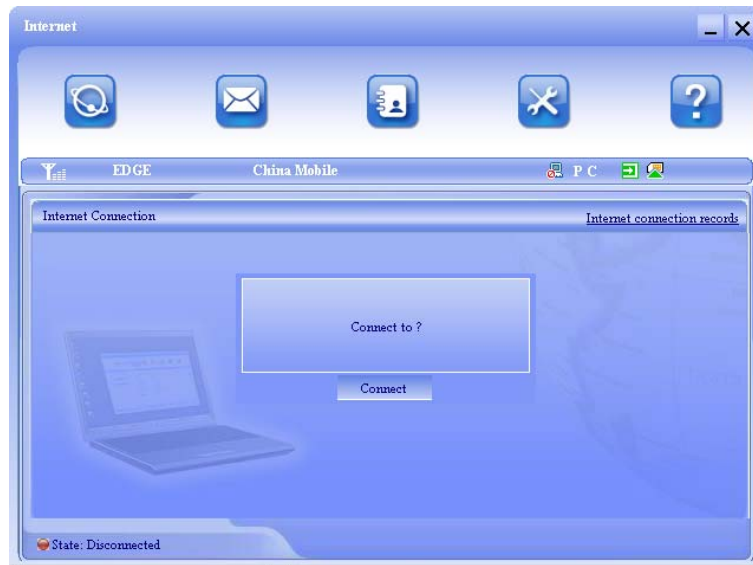
- Click "**Finish**" to complete the application software uninstall.

## 2 Functions & Operation

### 2.1 Interface introduction

#### 2.1.1 Main Interface

The starting screen of the Device software is shown as the following:



The whole interface is divided into three parts. Related functions can be executed by operation in the related areas.

#### 1. Function button area:

There will show various function button icons. Select different function button and it will carry out corresponding operation.





Internet: Connect to the Internet.



Short Message (SMS): Send SMS or read SMS.



PhoneBook: Save and view the different information of the contacts.



Settings: Set normal relative information for the modem.











Help: Show the help information.

## 2. System information area:

Show the system status and different kinds of tips.

Icon	Explanations
	The icon indicates the network signal intensity. There are 6 stages from none to the strongest.
	The icon indicates there are new SMS at present.
	The icon indicates the current status of Internet connection is not connected.
	The icon indicates the current status of Internet connection is already connected.
	Letter “ P ” means supporting packet-switch ( P ) service, letter “C” means supporting circuit-switch ( C ) service.
	SIM/USIM card is in status of roaming.

Icon	Explanations
	The icon indicates insert status of the modem. Green means it has been inserted into the computer.
	The icon indicates insert status of the modem. Red means it has not been inserted into the computer.
	The icon indicates insert status of the modem. Yellow means it has been inserted into the computer but in offline status.
	The icon indicates insert status of the SIM/USIM card to the modem. Green means the card has been inserted.
	The icon indicates insert status of the SIM/USIM card to the modem. Red means it has not been inserted.
	The icon indicates the current network type, i.e. EDGE or GPRS, HSDPA/HSUPA service.
	Name of the current service provider.
	View related information for your internet operation, such as, user name, start time, disconnect time, duration, data received and data sent.

### 3. User Area:

Show the man-computer interaction information under various conditions.

### 2.1.2 Description of Mini Icons

When click the mini button, the software will minimize as an icon on the system taskbar. If connected to the Internet, the minimized software won't influence the download of data or receiving SMS. When the application window is minimized, the system icons will display on the taskbar. Double click the icon to resize the display.

#### 1. Taskbar Icons Description:



The Device has been inserted into the computer.



The Device is not inserted into the computer.



The Device is offline.



UIM/SIM card is not inserted.



No network signal.



There is a new message.



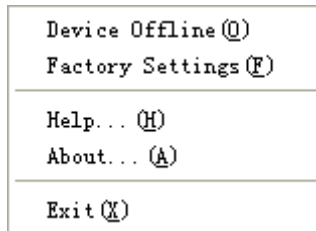
The Device is ready to connect to Internet.



The Internet is already connected.

#### 2. The uses of Tray Icons:

Right Click the tray icons, the following menu will appear:



**Device Offline/ Device Online:** Pause/reusing the working of the modem. If connected Internet, you need disconnect the Internet first, and then select the Device Offline.

**Factory Settings:** Restore all the settings to the original values in the Device. This operation just affects the settings in the Device and do not change any software settings in the laptop or desktop PC.

**Help:** Enter the Device software help.

**About:** View the information of the application software and hardware versions.

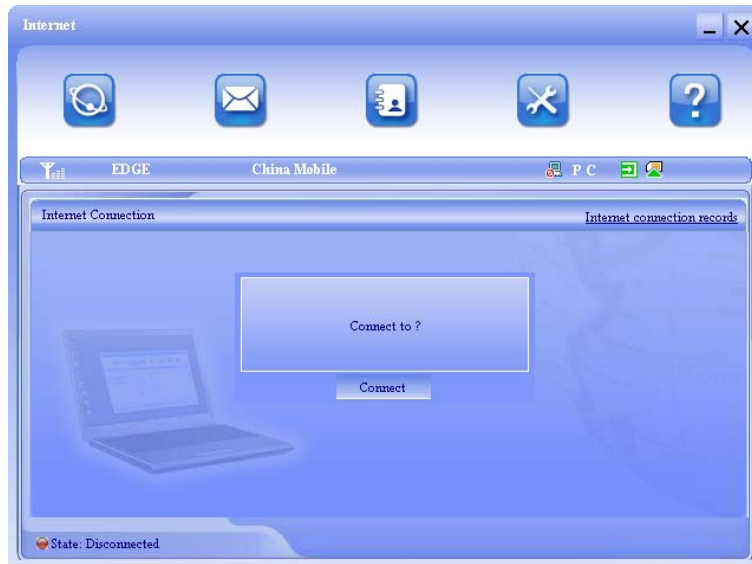
**Exit:** Close the software and stop the modem from working.

## 2.2 Connecting Internet

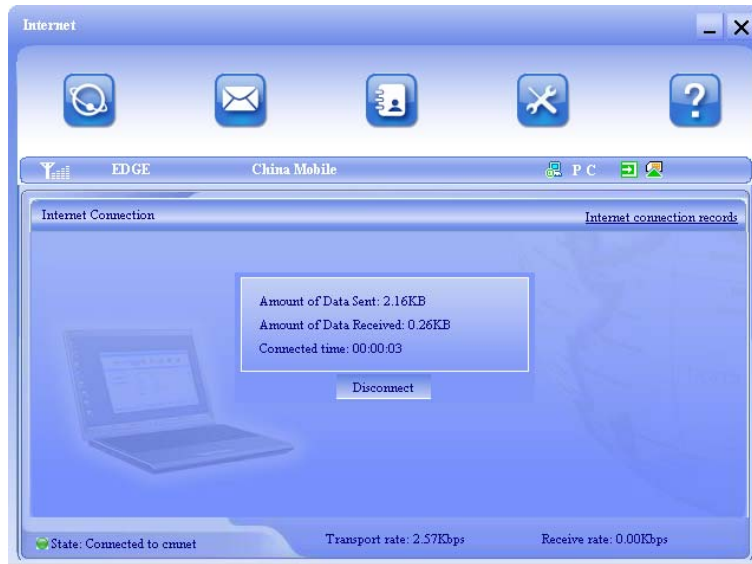
You can browse web pages after you have accessed to Internet with the help of modem, you can also receive SMS when surfing in the Internet.

1. Connect to the Internet:

Click the **Internet** icon. Then the system will ask you "**Connect to ?**". Select "**Connect**".



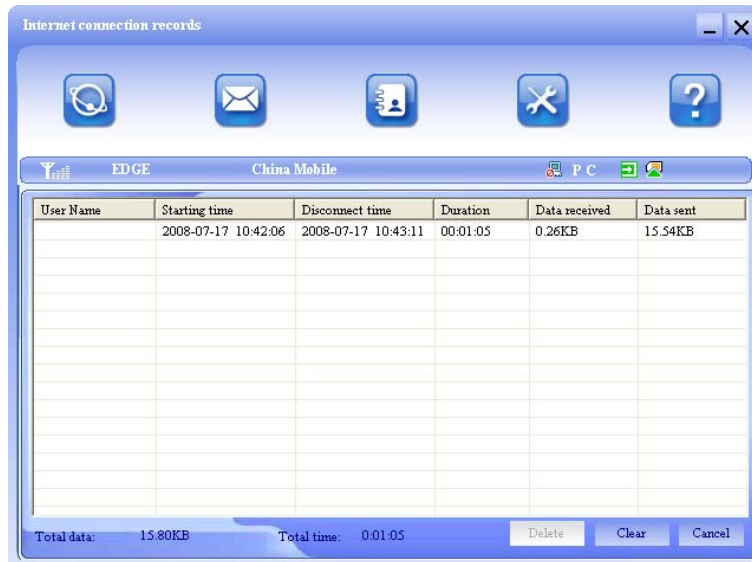
When connected, there is a status bar in the bottom of the user area which shows "State: connected to ...", and the user area will show data amount, connected time and so on. Then you can access Internet and receive email etc through network.



You can click “**Disconnect**” to stop the connection when the “**Connect**” button becomes “Disconnect” button,

2. Internet connection records:

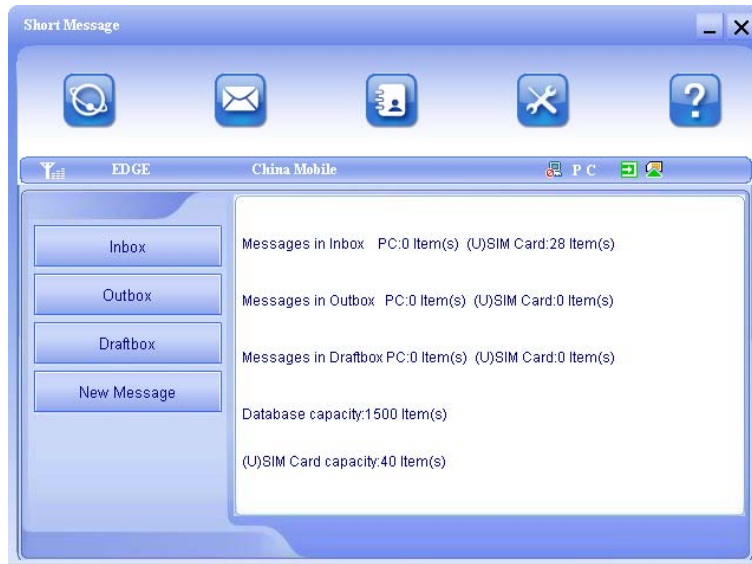
Click “Internet connection records” [Internet connection records](#) to check the log of Internet connection history.



### 2.3 SMS

**Note:** To ensure that the Short Message can be used properly, at first, you should setup the correct Short Message center number. Refer to section “**3.5.4 Message Settings**”.

Click the “**Short Message**” icon to switch to the SMS interface and it will show the number of messages in the inbox, outbox and draftbox. The user can click icons of “**InBox**”, “**OutBox**”, “**DraftBox**” and “**New Message**” to enter relative interface.



**InBox:** Save the received messages.

**OutBox:** Save the successfully sent messages.

**DraftBox:** Save the editing SMS which haven't been sent. The drafts can only be saved in computer, not USIM/SIM.

**New Message:** Write a new message.

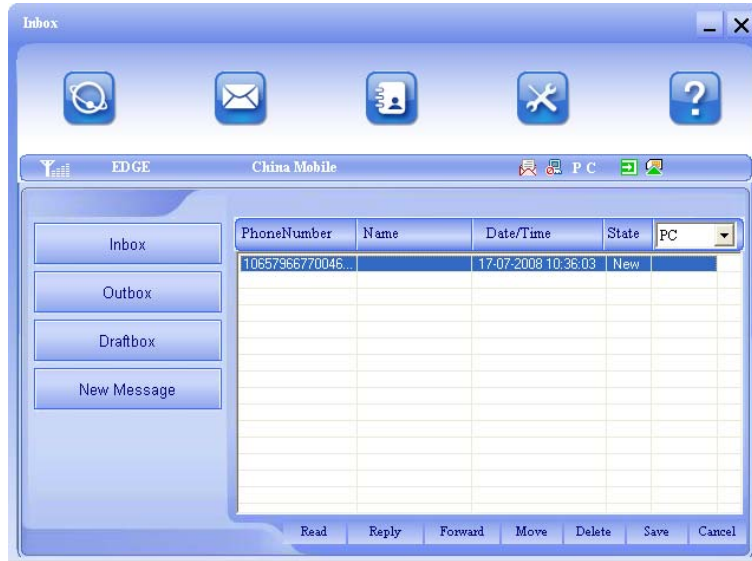
**For example:** "Message in InBox PC : 2 Item(s) (U)SIM Card: 1 Item(s)" means: The PC side has 2 short messages and there is 1 short message in the Inbox of the SIM card , "(U)SIM Card capability:40Item(s)" means the SIM card can hold 40 short messages. Different SIM/USIM cards will have different capacities. The modem will show the capacity automatically in usage, like the above "40". For more information, please consult your supplier.



### 2.3.1 Read Short Message

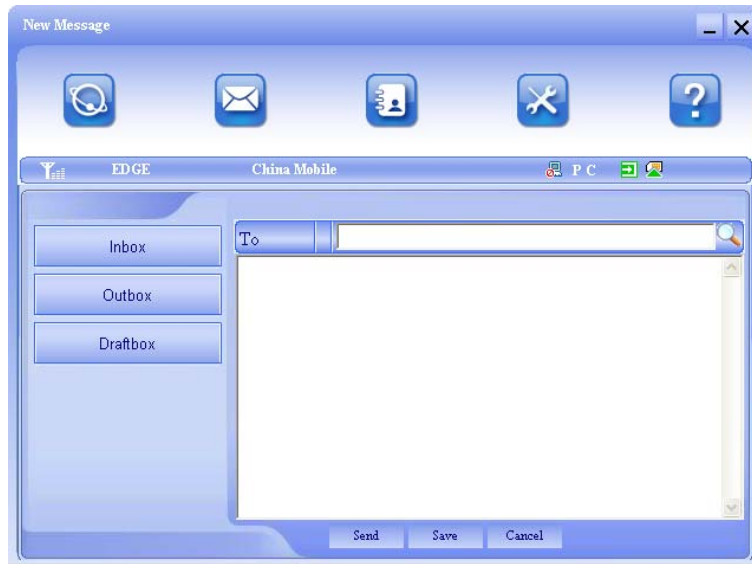
Click the **"Inbox"** button on the main interface or click new message icon on the system taskbar to read the SMS saved in the box.

You can use the buttons under the menu to execute reading, forwarding, deleting, saving contact functions and so on.

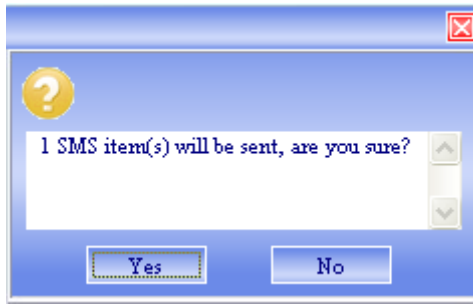


### 2.3.2 Create new message

Click **"New Message"** button to input the recipient's number and message content.



The recipient's number can be input directly or by entering the phonebook to select one/more/group records.  
The recipient's amount can be one or more. Please use “,” to separate recipients.  
The SMS content can include 160 individual English characters (including English symbols). There will show total characters on the interface.  
Click “**Send**”, the prompt screen like bellow will appear on the interface.



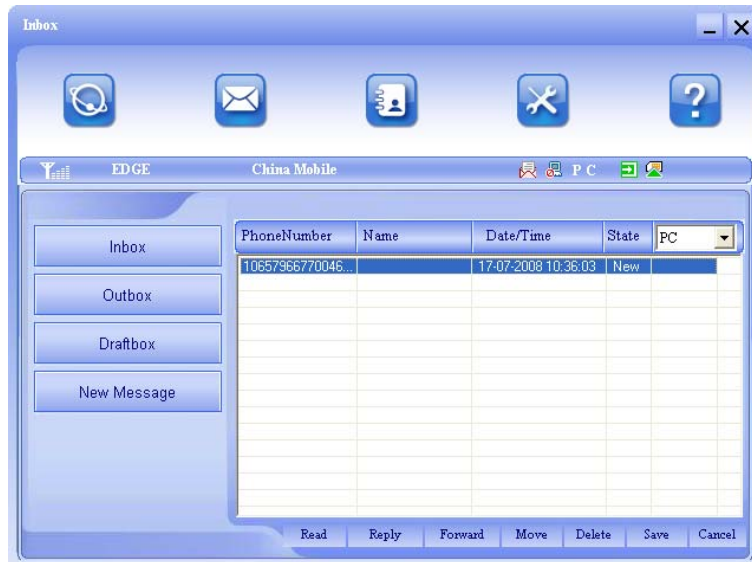
Select **“Yes”**, and then the edited short messages will be sent. After sent successfully, the SMS will be saved into outbox automatically. If send fails, it will be saved to the draft box automatically.

Send SMS while browse the web:

When surfing the Internet, if your network supports, you can send short messages at the same time. Click **“Short Message”** button icon, enter the short message interface to send short messages normally.

### 2.3.3 Operating Guide

Enter any of the **InBox/OutBox/DraftBox** to execute the following functions:



**Read:** Read all the information of short messages. (The content of short messages, sender's phone number, delivered date and time)

**Reply:** Reply short messages to the sender (Can't be executed in OutBox / DraftBox).

**Forward:** Send the short message to other recipients (Can't be executed in DraftBox)..

**Move:** Change the saving location of short messages between PC or USIM/SIM card (Can't be executed in DraftBox).

**Delete:** Delete the selected short messages.

**Save:** Save sender's number into the phonebook.

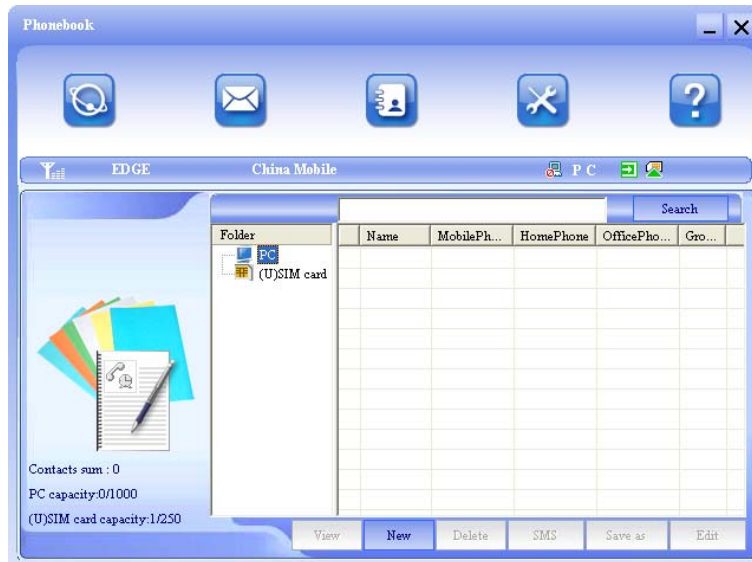
**Cancel:** Return to the SMS interface.

Make use of "**Ctrl**" or "**Shift**" key and click to choose several messages to execute simultaneously.

New message can not be received when the USIM/SIM card is full of short messages (Different USIM/SIM cards have different capacities). While new message can not be saved, the system will indicate the inbox is full and prompt user to clear the inbox at USIM/SIM card side.

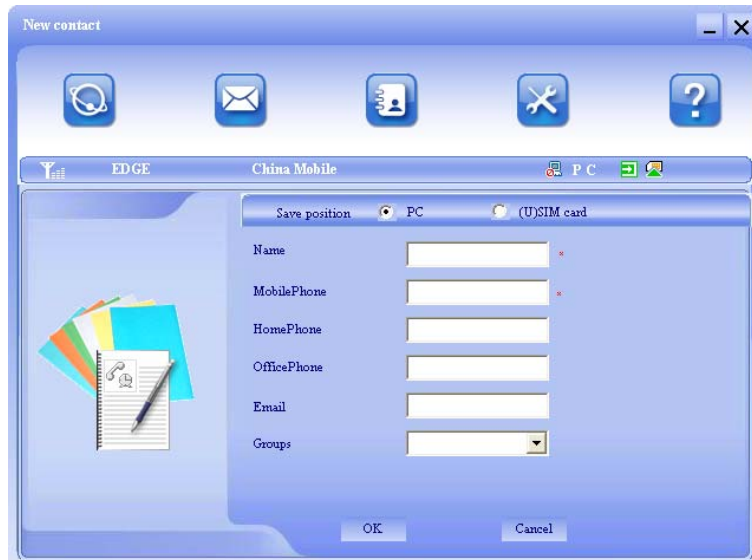
#### 2.4 PhoneBook

Click the "**PhoneBook**" icon to access to the phonebook window, the phonebook information can be saved in the PC or SIM/USIM card and you can choose the save position. Each record includes contact name, mobile phone number, home phone number, office phone number, email and the group name which it belongs to.



#### 2.4.1 Creating a new contact

- 1) Click **New** → **New Contact**.
- 2) Select **Save position** to decide where you want to save your contact, **PC** or **(U)SIM card**.
- 3) Input the name, phone number, Email address, etc. Then click **OK**.

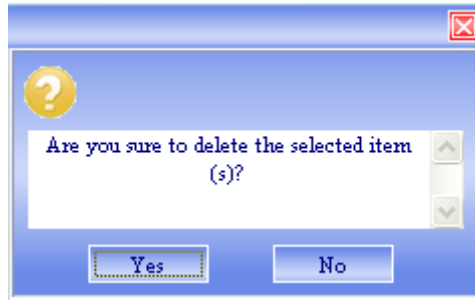


#### 2.4.2 Modifying contacts

- 1) Select a contact and then double-click it or click "**Edit**".
- 2) After the modification, click "**OK**".

#### 2.4.3 Deleting contacts

- 1) Select one or more contacts and then click "**Delete**".
- 2) At the prompt, click "**Yes**".



#### 2.4.4 Sending SMS to a contact

- 1) Select one or more contacts and then click "**SMS**".
- 2) You will access in the writing SMS window automatically, the selected contact mobile phone numbers will be listed in the receiver column.
- 3) Enter the contents of the message and then click "**Send**".
- 4) At the prompt, click "**Yes**" to send the SMS.

#### 2.4.5 Searching for a contact

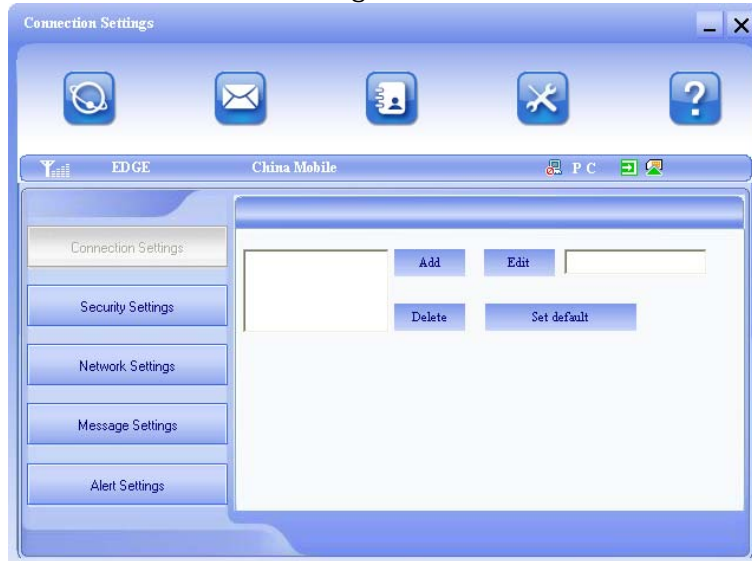
- 1) Enter the search conditions in the search condition blank.
- 2) Click **Search** begin searching.
- 3) The searching results will display in the contacts window.

#### 2.5 Settings

Click "**Settings**" icon to switch to the settings interface. It includes: Connection settings, Security settings, Network settings, Message settings, Alert settings.

**Note:** all the necessary settings have been correctly saved in your Device. There is no need to change these default settings.

### 2.5.1 Connection Settings



To ensure that the modem can connect the Internet properly, you should configure the connection information first.

#### 1. Button description

**Add:** Add new configuration file.

**Delete:** Delete the selected configuration file.

**Edit:** Edit the selected configuration file.

**Set default:** Select one configuration file from the list, and set it as the current using files.



## 2. Config File

Click **"Add"** to add new connection information to the system. The "Config File" interface will appear:

Config File

Config Filename

Dial Number

User Name

Password

Save User Name and Password

Ask for User Name and Password

Obtain APN address automatically

Use the following APN name

APN

PDP Type

IP

PPP

Authentication Mode

PAP

CHAP

Obtain DNS server address automatically

Use the following DNS server address

Preferred DNS

Alternate DNS

Obtain PDP address automatically

Use the following PDP address

Address

OK Cancel

The configuration information includes: Config Filename, Dial Number, User name, Password, APN, DNS, and PDP address. If network supports "Obtain server address automatically", the modem can obtain the assigned IP information automatically. If network does not support it, you should input the proper address manually. Please consult the network supplier of SIM/USIM card for all above information. The configuration information may be various according to the different network suppliers and network types.

## 2.5.2 Security Settings



### 1. Enable the PIN Code

When “**PIN enable**” item is selected, please enter PIN code to use the modem and you can click “**Change PIN**” to modify the number.

### 2. Backup Phonebook, Internet connection records and SMS of PC

Click “**Backup**” to backup the Phonebook, SMS and Internet connection records in PC.

Click “**Resume**” to restore the backup data.

## 2.5.3 Network Settings



### 1. Select Network

**Automatic:** The system selects the network automatically by the user's selected rules and the network status.

**Manual:** The network is selected by users themselves.

### 2. Network Mode Select

**Automatic:** The system will search valid network automatically.

**UMTS Only:** The system will only search UMTS network.

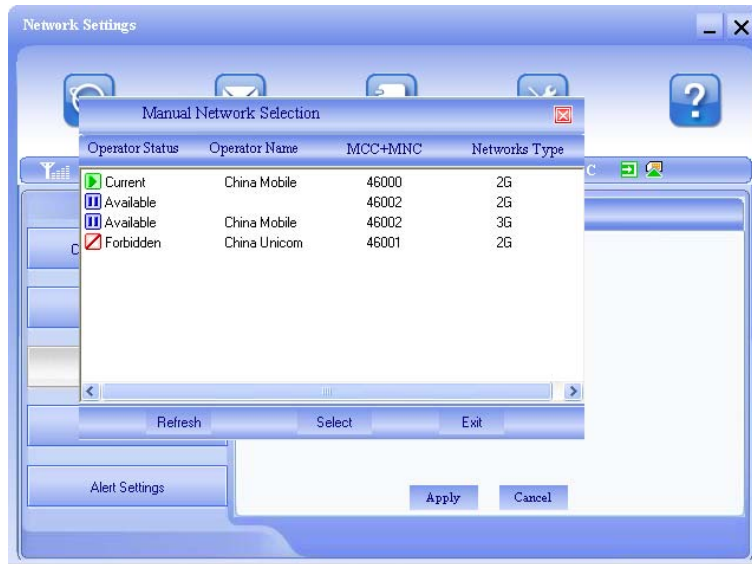
**GSM Only:** The system will only search GSM network.

### 3. Manual Select

When the **Manual** is selected, click the **Apply** button, pop-up the following window:

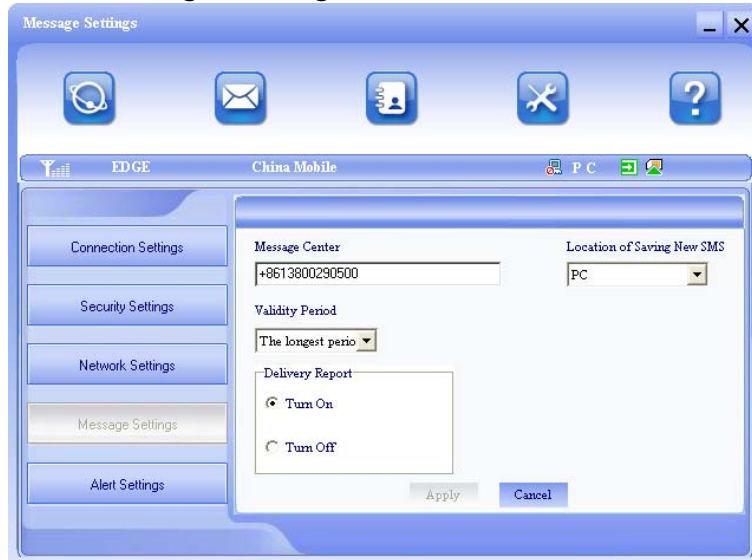


Wait a minute, the supplier list will show in the window and the suppliers with the blue or green icon can be selected. Select a proper network to connect.



Select the network that the supplier is utilized to serve your USIM/SIM and press **“Select”** to attach the network.

## 2.5.4 Message Settings



**Message Center:** Set the corresponding SMS center number. You must input the correct SMS center number to use the SMS properly and the number will be provided by the network supplier. Please enter the country code before the number.

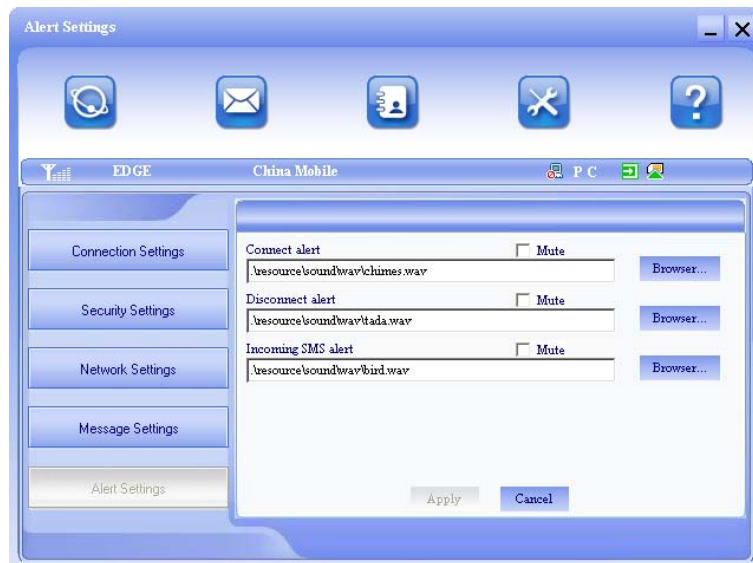
**Validity period:** Set the time limit for saving SMS in the network side. (This function needs network supports.) In option: 12 hours/A day/A week/The longest period. The default setting is the longest period permitted by the network.

**Location of Saving New SMS:** Select "Default" to save in location set by network. Select "(U)SIM Card" to save in USIM/SIM card; select "PC" to save in laptop or desktop PC.

**Delivery Report:** Set as "Turn On" or "Turn Off". When it is set as "Turn On", the network will inform you of the status for the

sent messages.

## 2.5.5 Alert settings



You can set “Connect alert, Disconnect alert and Incoming SMS alert” by yourself. These alerts will sound on the PC side. The audio file supports MP3、WAV、WMA and MIDI format. If you select “**Mute**”, you cannot hear corresponding alert.

## 2.6 MicroSDHC card

If you use MicroSDHC card in your modem, your computer will display a removable disk related to the microSDHC card. You can use this disk freely as you want.

If you want to pull out the modem, please uninstall the

removable disk first. For more details, please refer to section "Hardware Uninstall".

## 2.7 Help

Click "**Help**" icon, and switch to the help interface. Under the help topic, you can get the Device information about function introductions, installation and usage guide, etc



### 3 Declaration

- This device complies with part 15 of the FCC Rules. Operation is subject to the following two conditions:  
(1) This device may not cause harmful interference, and  
(2) this device must accept any interference received, including interference that may cause undesired operation.
- Any changes or modifications not expressly approved by the party responsible for compliance could void the user's authority to operate the equipment.
- Some electronic devices are susceptible to electromagnetic interference sent by this equipment if inadequately shielded. Please use this equipment at least 20cm or as far as you can from TV set, radio and other automated office equipment so as to avoid interference.
- This device is a radio transmitter and receiver. It is designed and manufactured not to exceed limits for exposure to radio frequency (RF) energy set by the Federal Communications Commission (FCC) of the U.S. Government. These limits are part of comprehensive guidelines and establish permitted levels of RF energy for the general population. The guidelines are based on standards that were developed by independent scientific organizations through periodic and thorough evaluation of scientific studies. The standards include a substantial safety margin designed to assure the safety of all persons, regardless of age or health.

- This device is to be used only for fixed and mobile applications. If the final product after integration is intended for portable use, a new application and FCC is required. The antenna(s) used for this transmitter must be installed to provide a separation distance of at least 20cm from all persons and must not be co-located or operating in conjunction with any other antenna or transmitter.
- This equipment has been tested and found to comply with the limits for a Class B digital device, pursuant to part 15 of the FCC Rules. These limits are designed to provide reasonable protection against harmful interference in a residential installation. This equipment generates, uses and can radiate radio frequency energy and, if not installed and used in accordance with the instructions, may cause harmful interference to radio communications. However, there is no guarantee that interference will not occur in a particular installation. If this equipment does cause harmful interference to radio or television reception, which can be determined by turning the equipment off and on, the user is encouraged to try to correct the interference by one or more of the following measures:
  - Reorient or relocate the receiving antenna.
  - Increase the separation between the equipment and receiver.
  - Connect the equipment into an outlet on a circuit different from that to which the receiver is connected.
  - Consult the dealer or an experienced radio/ TV technician for help.

- When the module is installed into a host device, the FCC ID label must be visible through a window on the final device or it must be visible when an access panel, door or cover is easily removed. If not, a second label must be placed on the outside of the final device that contains the following text: "Contains FCC ID: Q78-ZTEMF210V"

EC DECLARATION OF CONFORMITY 

It is hereby declared that following designated product:

Product Type: GSM/GPRS/EDGE/WCDMA/HSDPA/HSUPA Module

Model No: MF210V

Complies with the essential protection requirements of the Radio and Telecommunication Terminal Equipment Directive (EC Directive 1999/5/EC) and the Electromagnetic Compatibility Directive(2004/108/EC)

This declaration applies to all specimens manufactured identical to the samples submitted for testing/evaluation.

Assessment of compliance of the product with the requirements relating to the Radio and Telecommunication Terminal Equipment Directive (EC Directive 1999/5/EC) and the Electromagnetic Compatibility Directive(2004/108/EC) was performed by British Approvals Board for Telecommunications (BABT) (Notified Body No.0168), based on the following standards:

Safety	EN 60950-1:2006	
EMC	ETSI EN 301 489-1 v1.8.1	ETSI EN 301 489-7 v1.3.1
	ETSI EN 301 489-24 v1.4.1	
Radio	ETSI EN 301 511 v9.0.2	ETSI EN 301 908-1 v3.2.1
	ETSI EN 301 908-2 v3.2.1	
Health	EN 50383:2002	EN 50385:2002

This declaration is the responsibility of the manufacturer:

ZTE Corporation

ZTE Plaza, Keji Road South, Hi-Tech, Industrial Park,  
Nanshan District, Shenzhen, Guangdong, 518057, P.R.China

Authorised person signing for the company:

Xu feng Quality Director Of ZTE Corporation

Name in block letters & position in the company

Shenzhen, 17<sup>th</sup> June 2010

Place & date



Legally valid signature