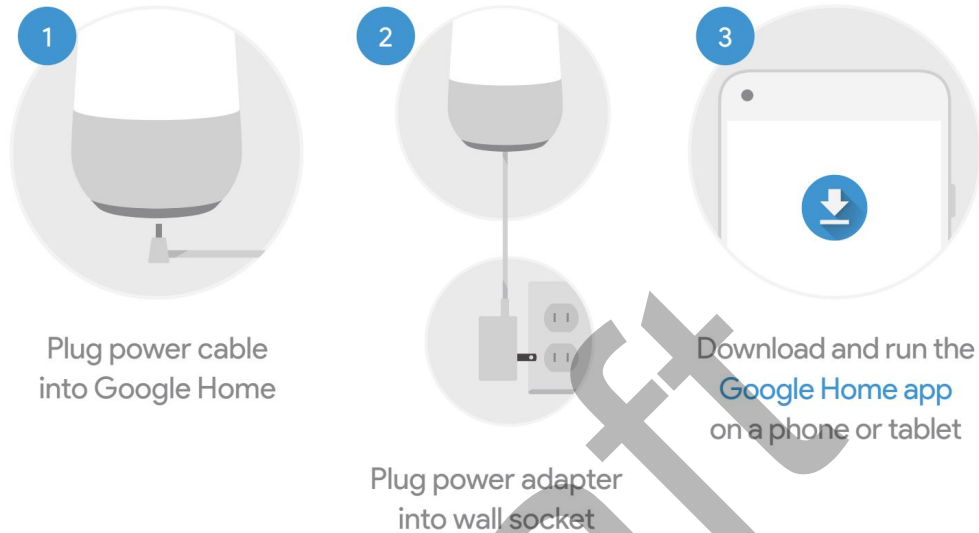


## Google Home Product Information

# Get Started



Please review the product information, regulatory information, health and safety information and instructions available at [support.google.com/googlehome](https://support.google.com/googlehome) before using your device. The limited warranty and additional support resources are also available there.

**Electric Shock and Heat:** Do not expose Google Home or the power supply to water or extreme conditions. Take care when handling the power supply to avoid electric shock. To provide power to your Google Home, only use the power supply provided with your Google Home. If you wish to plug your Google Home into a wall socket, you will need to install your Google Home near a wall socket that is easily accessible. Your Google Home may get hot to the touch; this is normal. Unplug your Google Home's power supply and let it cool before handling.

**Pacemakers and Other Implanted Devices:** Google Home contains magnets and components that emit an electromagnetic field and could interfere with pacemakers or other electronic medical devices. Before using your Google Home, consult your physician or medical device manufacturer about the required minimum safe distance between Google Home and your medical device.

**Device with Magnet:** Avoid placing any media that contains magnets or is sensitive to magnetism, such as credit cards, bank cards, audio/video, tapes, or magnetic memory devices, near this product.

Media containing information sensitive to magnets should be kept at least 5 cm (2 inches) away from the product. For example, if you carry your wallet or billfold containing magnetic cards next to this product, information stored on those cards could be destroyed.

Similarly, magnet-sensitive devices, such as a mechanical watch or measuring device, can be damaged if they come too close to this product.

**FCC Compliance Statement:**

**NOTE ON INTERFERENCE IN A RESIDENTIAL INSTALLATION**

This device has been tested and found to comply with the limits for a Class B digital device, pursuant to part 15 of the FCC Rules. These limits are designed to provide reasonable protection against harmful interference in a residential installation. Google Home generates, uses and can radiate radio frequency energy and, if not installed and used in accordance with the instructions, may cause harmful interference to radio communications. However, there is no guarantee that interference will not occur in a particular installation. If Google Home does cause harmful interference to radio or television reception, which can be determined by plugging in, then unplugging, Google Home, the user is encouraged to try to correct the interference by reorienting or relocating the receiving antenna and/or consulting the dealer or an experienced radio/TV technician for help.

Google Home complies with part 15 of the FCC Rules. Operation is subject to the following two conditions: (1) the device may not cause harmful interference, and (2) this device must accept any interference received, including interference that may cause undesired operation.

Changes or modifications not expressly approved by the party responsible for compliance could void the user's authority to operate Google Home or warranty.

Model: H0ME

FCC ID: A4RH0ME -- your Google Home's FCC ID is printed on its bottom.

To satisfy FCC exposure requirements, a separation distance of at least 20 cm should be maintained between the antenna of this device and persons during device operation. Operations at closer than this distance are not recommended.

The antenna used for this transmitter must not be co-located in conjunction with any other antenna or transmitter.

The Micro-USB port in the back of the device is a service-only port.

© Google Inc. All rights reserved. Google and Google Home are trademarks of Google Inc. Google Home is designed by Google and assembled in China.

Draft