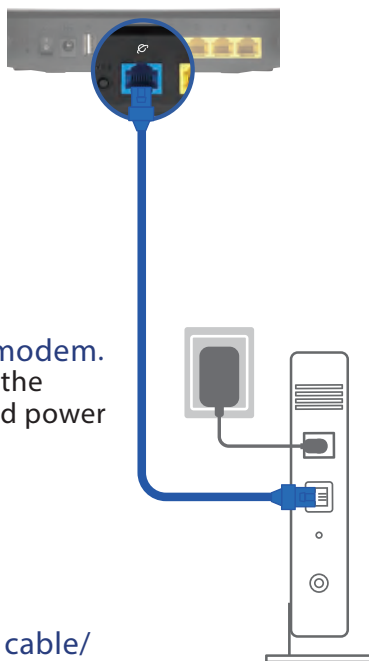


Fast. Easy. Setup!



1 Prepare your Modem

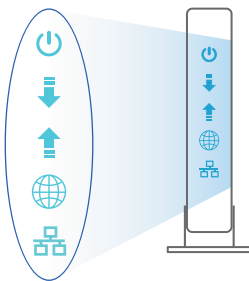
Connect your modem to the router with the network cable provided.



Power on the modem. Plug modem to the power outlet and power on.

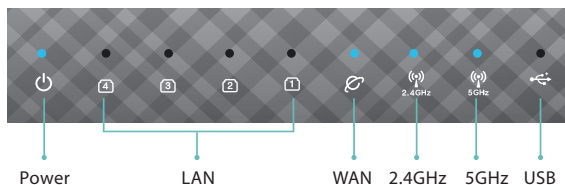
Power on your cable/DSL modem.

Check your cable/DSL modem LED lights to ensure the connection is active.

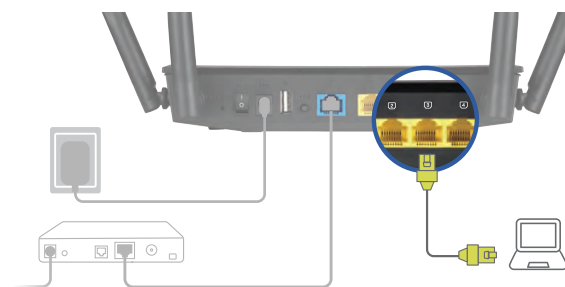


2 Power on your Router

Plug in the power adapter and press the power button at the back of your router.



Check the WAN and 2.4G / 5G LED lights to ensure the hardware connection is ready (see the picture above).

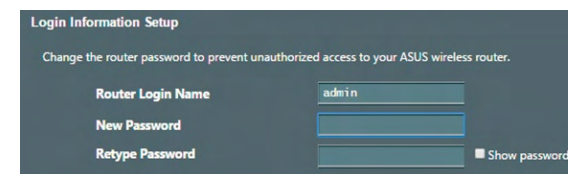


Connect your PC to the router via Wi-Fi or using an additional network cable (not included).

3 Login and Connect



Open a web browser. You will be redirected to the ASUS Setup Wizard. If not, navigate to <http://router.asus.com>



Set up the router login information. Assign unique login name and password for your router to prevent unauthorized access.

Security		
Record your login information here.		
Router	Login Name	
	Password	
2.4 GHz	Network Name(SSID)	
	Password	
5 GHz	Network Name(SSID)	
	Password	

1 If you are using DSL for internet, you will need your username/password from your Internet service provider (ISP) to properly configure your router.