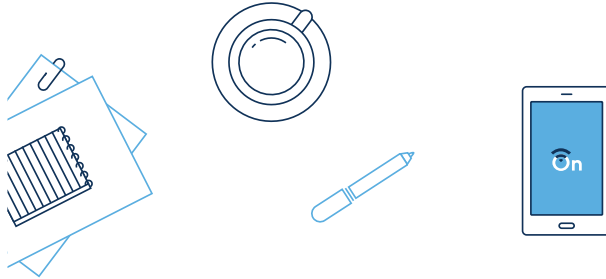


1

Get the app

Download the Google On app on your Android or iOS mobile device. The app will guide you through setup.



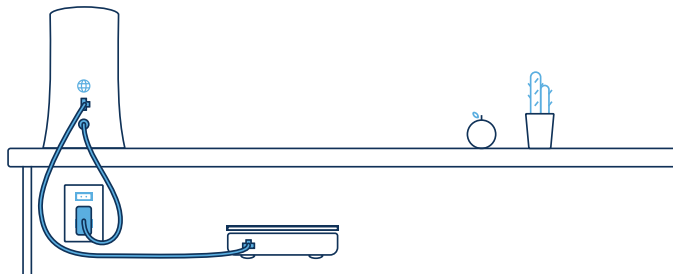
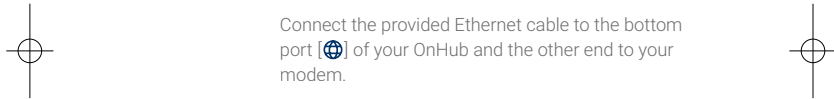
2

Plug in your OnHub

Find a resting spot. OnHub gives you the best signal when it's in an open space. Try placing it in plain view, like on a shelf or TV stand.

Connect the power adapter to your OnHub, then plug the other end into a power outlet. The light at the bottom of the OnHub will glow to indicate that it's powered on.

Connect the provided Ethernet cable to the bottom port [🌐] of your OnHub and the other end to your modem.



3

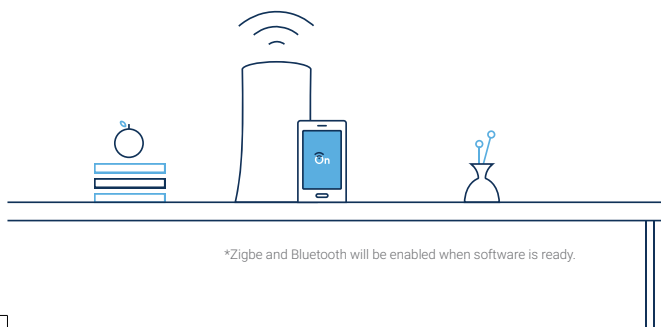
Get online

The app will give you easy-to-follow steps for setting up your Wi-Fi, Zigbee and Bluetooth network* - when prompted create a network name and password.

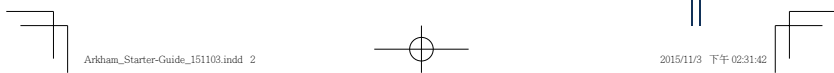
Need help?

VISIT g.co/onsupport

CONTACT 844-442-3693
onsupport@google.com



*Zigbee and Bluetooth will be enabled when software is ready.



What does each color mean?



NO LIGHT

OnHub needs to be plugged in.



BLUE

OnHub is ready for setup.



TEAL

OnHub is on and active.



AMBER

Something is wrong; check the Google On app for details.

Explore the Google On app



Set up Wave control



Set a Priority device



Run a Network check



Share Wi-Fi password



Okay, ready to set up?

Let's get started.

Federal Communications Commission Statement

This device complies with Part 15 of the FCC Rules. Operation is subject to the following two conditions:

- This device may not cause harmful interference.
- This device must accept any interference received, including interference that may cause undesired operation.

This equipment has been tested and found to comply with the limits for a class B digital device, pursuant to part 15 of the FCC Rules. These limits are designed to provide reasonable protection against harmful interference in a residential installation. This equipment generates, uses and can radiate radio frequency energy and, if not installed and used in accordance with the instructions, may cause harmful interference to radio communications. However, there is no guarantee that interference will not occur in a particular installation. If this equipment does cause harmful interference to radio or television reception, which can be determined by turning the equipment off and on, the user is encouraged to try to correct the interference by one or more of the following measures:

- Reorient or relocate the receiving antenna.
- Increase the separation between the equipment and receiver.
- Connect the equipment into an outlet on a circuit different from that to which the receiver is connected.
- Consult the dealer or an experienced radio/TV technician for help

The operation frequency of the device is in the 5150-5250 MHz band is for indoor use only.

WARNING!

Any changes or modifications not expressly approved by the party responsible for compliance could void the user's authority to operate the equipment.

Prohibition of Co-location

This device and its antenna(s) must not be co-located or operating in conjunction with any other antenna or transmitter.

IMPORTANT NOTE:

Radiation Exposure Statement: This equipment complies with FCC radiation exposure limits set forth for an uncontrolled environment. End users must follow the specific operating instructions for satisfying RF exposure compliance. To maintain compliance with FCC exposure compliance requirement, please follow operation instruction as documented in this manual.

WARNING!

This equipment must be installed and operated in accordance with provided instructions and the antenna(s) used for this transmitter must be installed to provide a separation distance of at least 20 cm from all persons and must not be co-located or operating in conjunction with any other antenna or transmitter.