

---

# *6304W ONU Gateway Configuration Guide*

**Version 1.01**

**ubiQuoss Inc.**  
**[www.ubiQuoss.com](http://www.ubiQuoss.com)**

Specifications and product availability are subject to change without notice.  
© 2017 ubiQuoss. All rights reserved.

---

<b>CHAPTER 1</b>	<i>Getting Started</i> .....	<b>1</b>
<b>CHAPTER 2</b>	<i>Logging into the Web GUI</i> .....	<b>3</b>
<b>CHAPTER 3</b>	<i>Viewing Device Information</i> .....	<b>7</b>
<b>CHAPTER 4</b>	<i>Viewing WAN Interface Information</i> .....	<b>9</b>
<b>CHAPTER 5</b>	<i>Configuring WAN Interfaces</i> .....	<b>11</b>
<b>CHAPTER 6</b>	<i>Configuring Wi-Fi</i> .....	<b>15</b>
<b>CHAPTER 7</b>	<i>Viewing Wi-Fi Information</i> .....	<b>19</b>
<b>CHAPTER 8</b>	<i>Configuring Voice Service</i> .....	<b>21</b>
<b>CHAPTER 9</b>	<i>Configuring NTP</i> .....	<b>25</b>
<b>CHAPTER 10</b>	<i>Configuring Static Routing</i> .....	<b>27</b>
<b>CHAPTER 11</b>	<i>Restarting the Device</i> .....	<b>31</b>
<b>CHAPTER 12</b>	<i>Reverting to the Default Setting</i> .....	<b>33</b>
<b>CHAPTER 13</b>	<i>Upgrading Software</i> .....	<b>35</b>
<b>CHAPTER 14</b>	<i>Configuring Backups</i> .....	<b>37</b>

<b>CHAPTER 15</b>	<i>Restoring Configuration Files</i> .....	<b>39</b>
<b>CHAPTER 16</b>	<i>Performing Diagnostics</i> .....	<b>41</b>

---

## *Default Settings*

The following table lists the default settings for the four WAN interfaces to provide triple play services.

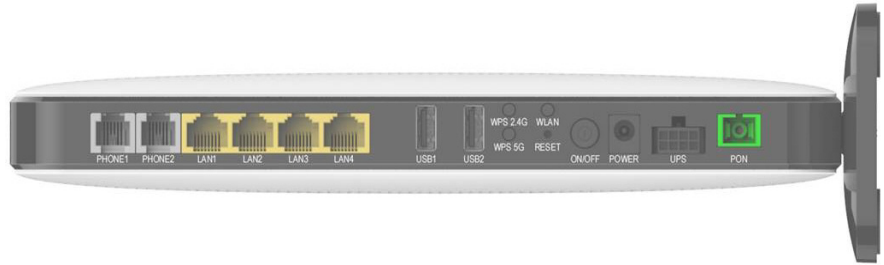
**TABLE 1-1. Default Settings**

---

<b>Interface</b>	<b>Type</b>	<b>VLAN</b>	<b>Binding LAN Ports</b>	<b>Service</b>
1_TR069_R_VID_400	IPoE	400		TR-069
2_VOICE_R_VID_200	IPoE	200	PHONE1, PHONE2	Voice
3_INTERNET_R_VID_100	IPoE	100	LAN1, Wireless(2.4G/ 5G)	Internet
4_OTHER_B_VID_300	Bridge	300	LAN2, LAN3, LAN4	IPTV

**FIGURE 1-1. Rear View**

---



# *Logging into the Web GUI*

---

## *Logging into the Web GUI*

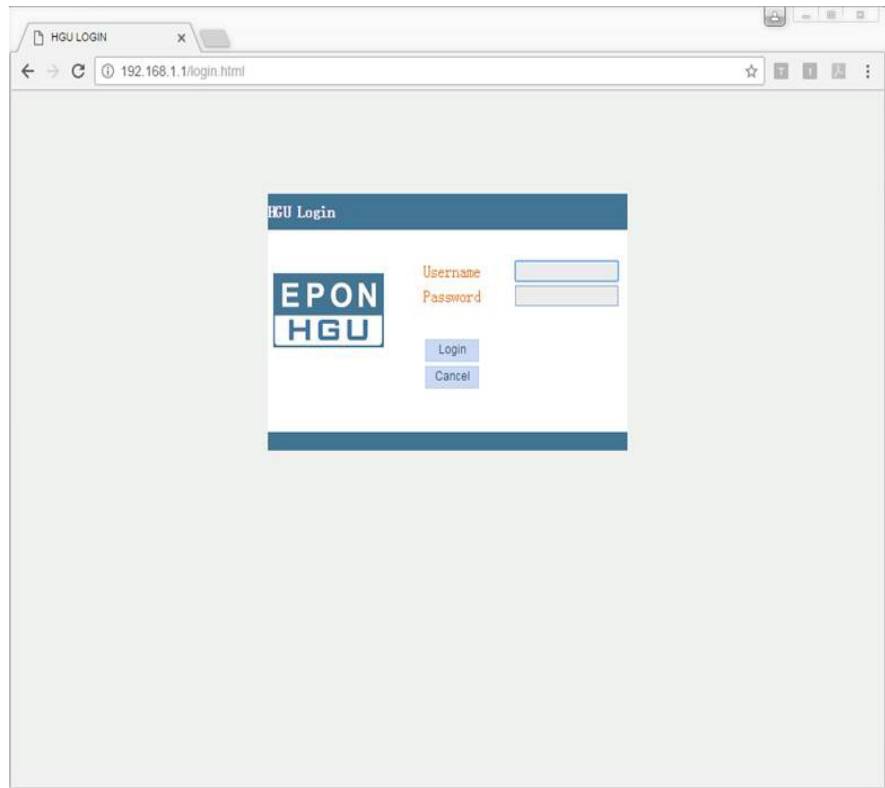
Follow these steps to log into the web GUI.

- 1 Connect your device to LAN 1 or Wireless.
- 2 Launch a web browser.
- 3 Connect to 192.168.1.1. A login screen displays.
- 4 Enter the user name and password. User names and passwords are case-sensitive.

**TABLE 2-1. User Names and Default Passwords**

---

	<b>Administrator</b>	<b>User</b>
User Name	admin	useradmin
Default Password	admin	useradmin

**FIGURE 2-1. Login Screen**

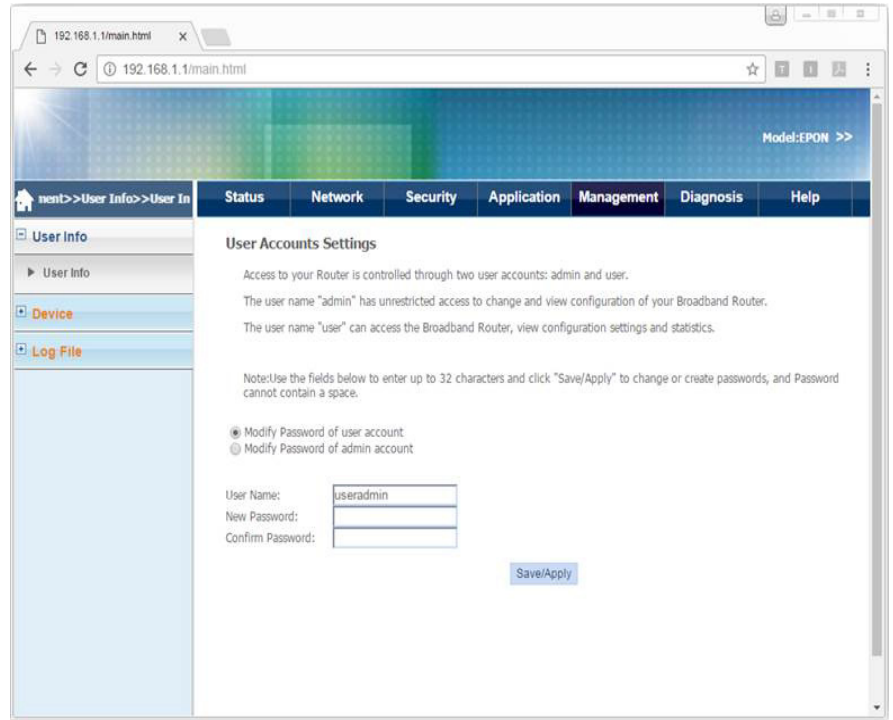
---

### *Changing Passwords*

Follow these steps to change a password.

- 1 Connect your device to LAN 1 or Wireless.
- 2 Launch a web browser.
- 3 Connect to 192.168.1.1. A login screen displays.
- 4 Enter the user name and password. The home screen displays.
- 5 Select Management > User Info > User Info.

FIGURE 2-2. User Info



- 6 Select whether to change the user or admin password.
- 7 Enter the user name, the new password, and then confirm the password.
- 8 Click Save/Apply.



## *Viewing Device Information*

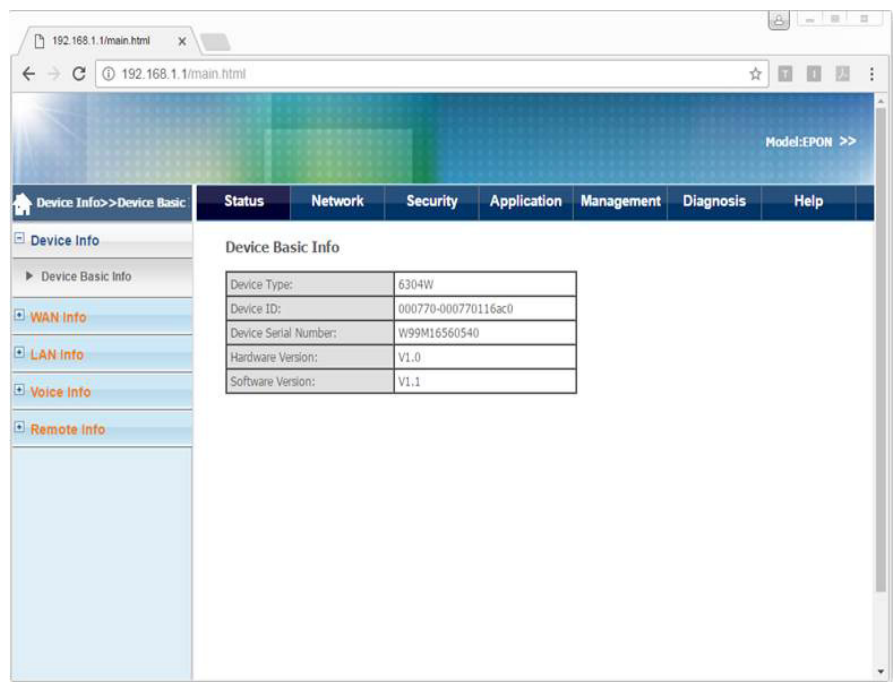
---

### *Viewing Device Information*

Follow these steps to view device information.

- 1** Connect your device to LAN 1 or Wireless.
- 2** Launch a web browser.
- 3** Connect to 192.168.1.1. A login screen displays.
- 4** Enter the user name and password. The home screen displays.
- 5** Select Status > Device Info > Device Basic Info. You can view the device type, device ID, hardware version, and software version.

FIGURE 3-1. Device Basic Info



## *Viewing WAN Interface Information*

---

### *Viewing WAN Interface Information*

Follow these steps to view WAN interface information.

- 1** Connect your device to LAN 1 or Wireless.
- 2** Launch a web browser.
- 3** Connect to 192.168.1.1. A login screen displays.
- 4** Enter the user name and password. The home screen displays.
- 5** Select Status > WAN Info > IPv4 Info. You can view the interface description, type, state, DNS address, and IPv4 address.

FIGURE 4-1. IPv4 Info

The screenshot shows a web browser window displaying a network configuration page. The browser's address bar shows '192.168.1.1/main.html'. The page has a navigation menu with tabs for Status, Network, Security, Application, Management, Diagnosis, and Help. A sidebar on the left contains expandable sections for Device Info, WAN Info (with sub-items for IPv4 Info, IPv6 Info, and EPON Info), LAN Info, Voice Info, and Remote info. The main content area is titled 'WAN IPv4 Info' and contains a table with the following data:

Interface Name	Interface Description	Type	VlanMuxId	IGMP	NAT	Firewall	State	DNS Address	IPv4 Address
epon0.1	1_TR069_R_VID_400	IPoE	400	Disable	Disable	Enable	Connected	8.8.8.8,0.0.0.0	172.21.0.22
epon0.2	2_VOICE_R_VID_200	IPoE	200	Disable	Enable	Enable	Connected	8.8.8.8,0.0.0.0	172.31.0.16
epon0.3	3_INTERNET_R_VID_100	IPoE	100	Enable	Enable	Enable	Connected	8.8.8.8,0.0.0.0	172.11.0.12
epon0.4	4_OTHER_B_VID_300	Bridge	300	Disable	Disable	Disable	Connected		

Below this table is a section titled 'Network Information' with a table containing the following data:

Default Gateway	172.11.0.1
Subnet Mask	255.255.255.0
Primary DNS Server	8.8.8.8
Secondary DNS Server	

A 'Refresh' button is located below the Network Information table.

## *Configuring WAN Interfaces*

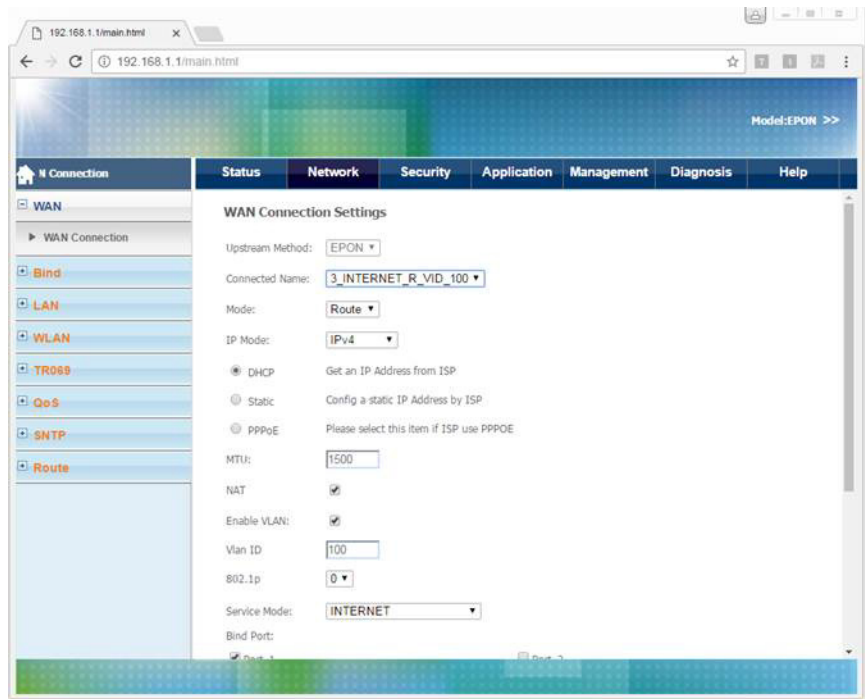
---

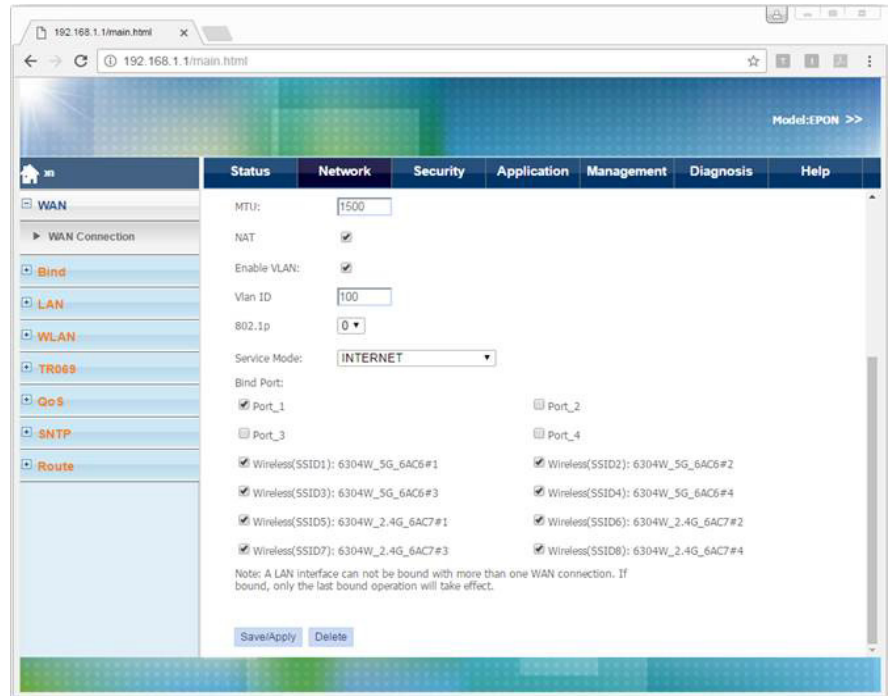
### *Configuring WAN Interfaces*

Follow these steps to configure a WAN interface.

- 1** Connect your device to LAN 1 or Wireless.
- 2** Launch a web browser.
- 3** Connect to 192.168.1.1. A login screen displays.
- 4** Enter the user name and password. The home screen displays.
- 5** Select Network > WAN > WAN Connection. You can add, modify or delete WAN connection settings.

FIGURE 5-1. WAN Connection





- **Connection Name**  
To add a new WAN connection, select Add new WAN.  
To modify or delete a WAN connection, select the WAN connection.
- **Service Mode**  
Select from Internet (nat), VoIP (voice), and Other (bridge).
- **Binding Port**  
Select the LAN port to bind to the WAN interface.





## *Configuring Wi-Fi*

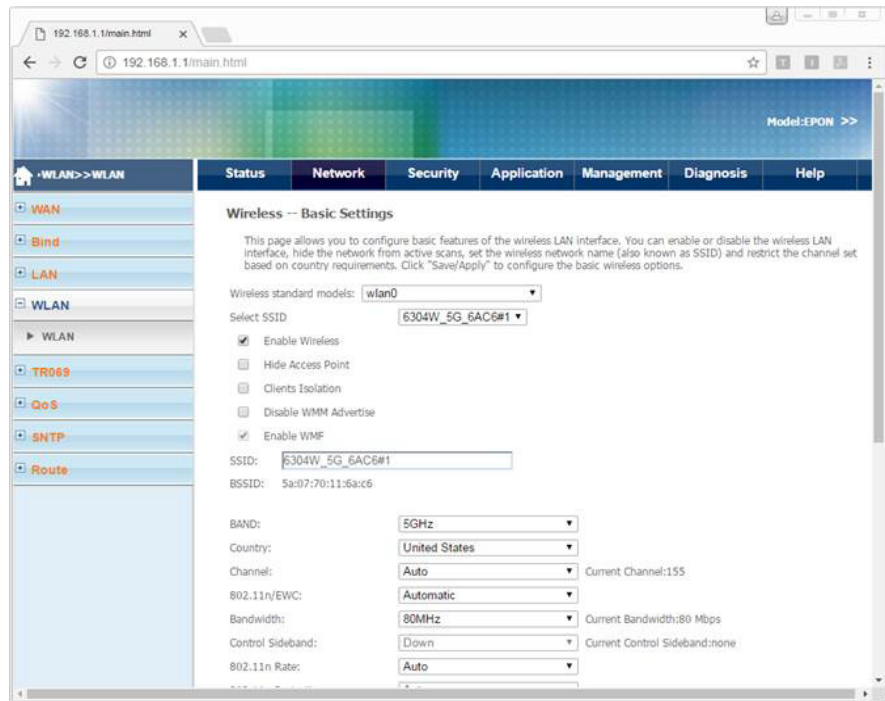
---

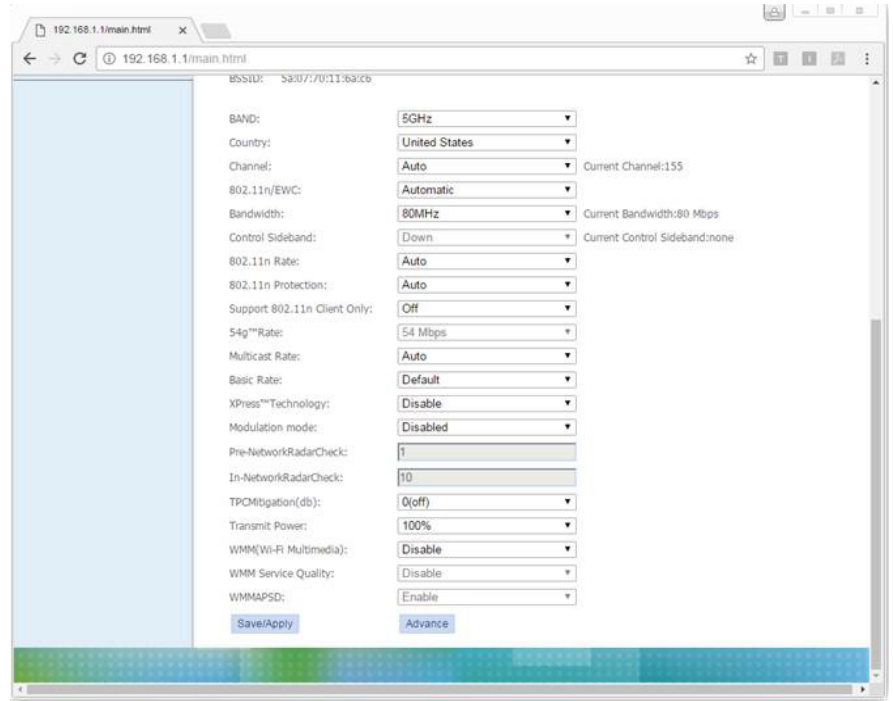
### *Configuring Wi-Fi*

Follow these steps to configure Wi-Fi.

- 1** Connect your device to LAN 1 or Wireless.
- 2** Launch a web browser.
- 3** Connect to 192.168.1.1. A login screen displays.
- 4** Enter the user name and password. The home screen displays.
- 5** Select Network > WLAN > WLAN. You can configure basic Wi-Fi features.

FIGURE 6-1. WLAN





### Changing the Wi-Fi Password

Follow these steps to change the Wi-Fi password.

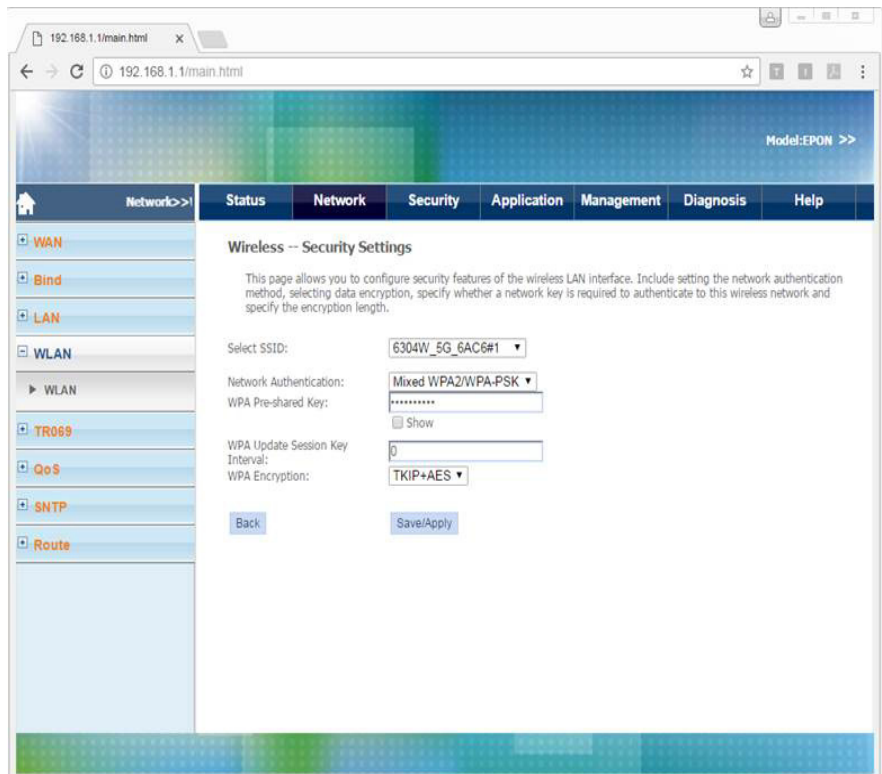
- 1 Connect your device to LAN 1 or Wireless.
- 2 Launch a web browser.
- 3 Connect to 192.168.1.1. A login screen displays.
- 4 Enter the user name and password. The home screen displays.
- 5 Select Network > WLAN > WLAN.
- 6 Click Advance. Security Settings are displayed.
- 7 Select the SSID to change the password for.

The following table lists the default Wi-Fi passwords.

**TABLE 6-1. Default Wi-Fi Passwords**

Wi-Fi	Password
5GHz	1234567890
2.4GHz	12345678

**FIGURE 6-2. Wi-Fi Security Settings**



## *Viewing Wi-Fi Information*

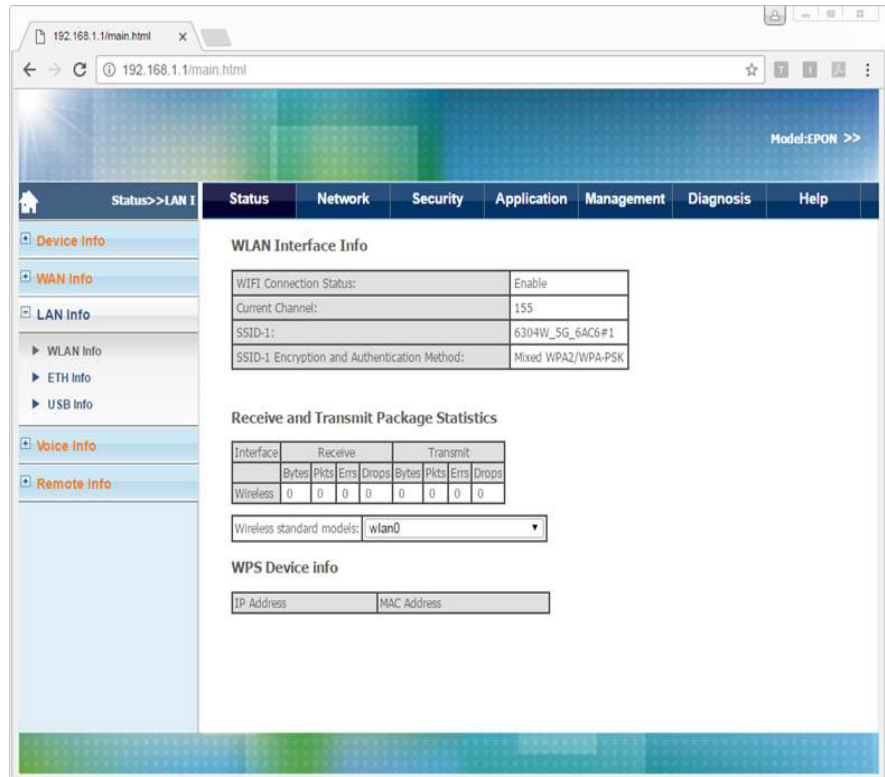
---

### *Viewing Wi-Fi Information*

Follow these steps to configure Wi-Fi.

- 1** Connect your device to LAN 1 or Wireless.
- 2** Launch a web browser.
- 3** Connect to 192.168.1.1. A login screen displays.
- 4** Enter the user name and password. The home screen displays.
- 5** Select Network > LAN Info> WLAN Info.

FIGURE 7-1. WLAN Info



- WLAN Interface Info  
Displays Wi-Fi interface information.
- WPS Device Info  
Displays wireless devices connected to the ONU using the WPS button.

## *Configuring Voice Service*

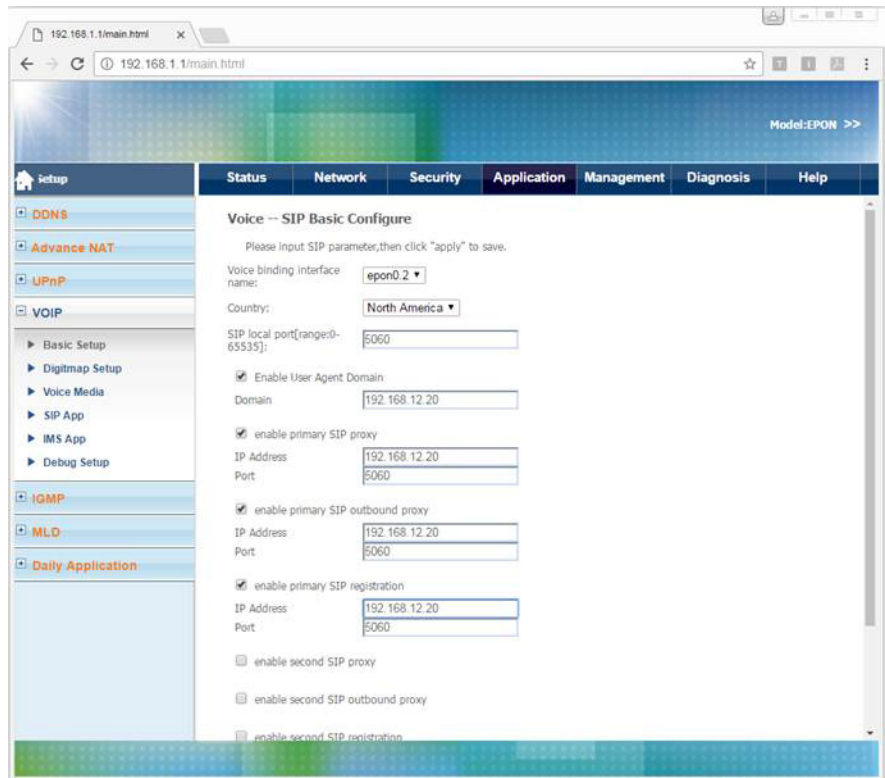
---

### *Configuring Voice Service*

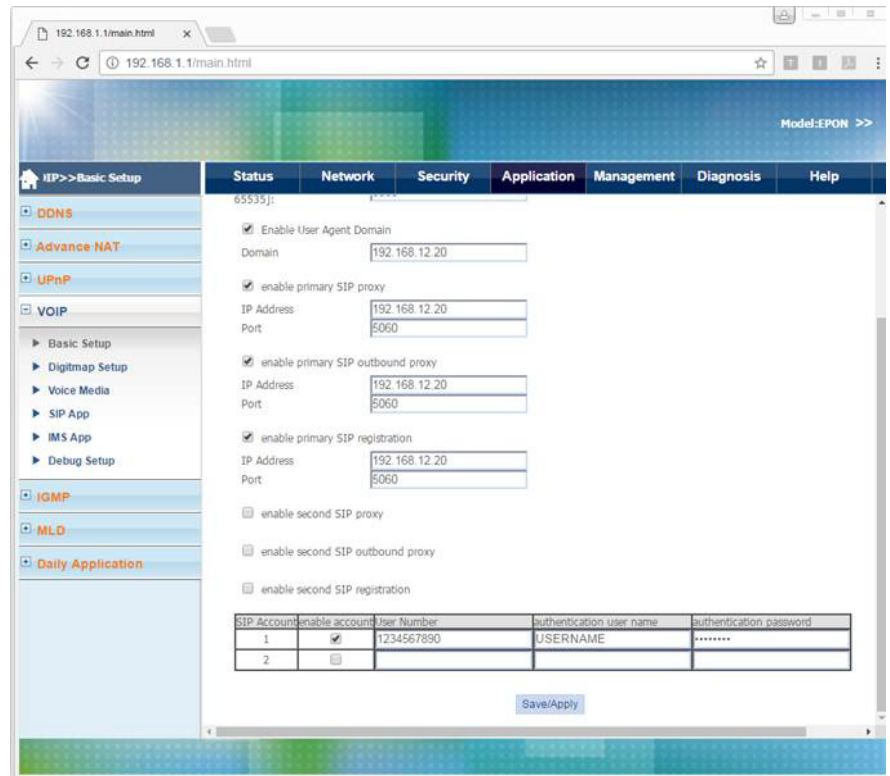
Follow these steps to configure voice service.

- 1** Connect your device to LAN 1 or Wireless.
- 2** Launch a web browser.
- 3** Connect to 192.168.1.1. A login screen displays.
- 4** Enter the user name and password. The home screen displays.
- 5** Select Application > VoIP > Basic Setup. You can configure SIP parameters and enable or disable SIP accounts.

FIGURE 8-1. VoIP > Basic Setup





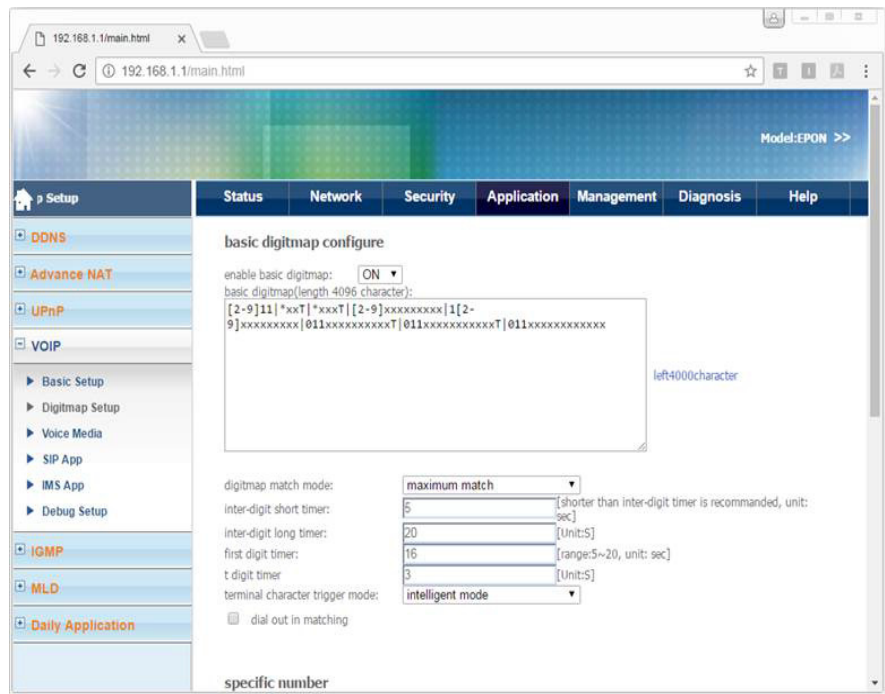


### Configuring Dial Plans

Follow these steps to configure a dial plan.

- 1 Connect your device to LAN 1 or Wireless.
- 2 Launch a web browser.
- 3 Connect to 192.168.1.1. A login screen displays.
- 4 Enter the user name and password. The home screen displays.
- 5 Select Application > VoIP > Digitmap Setup.

FIGURE 8-2. VoIP > Digitmap Setup



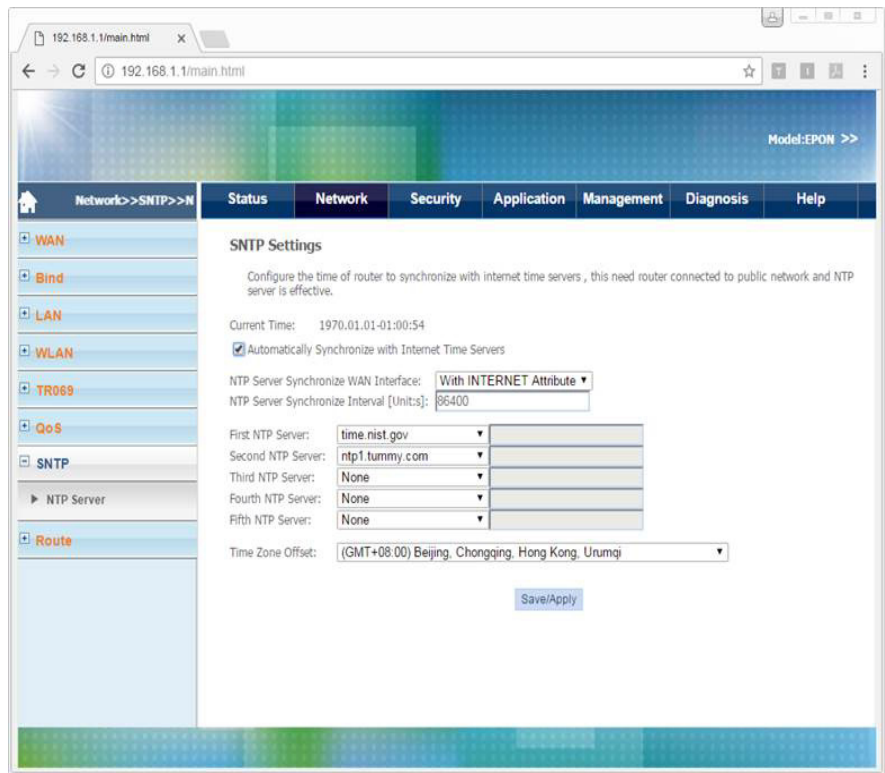
---

## *Configuring NTP*

Follow these steps to configure NTP.

- 1** Connect your device to LAN 1 or Wireless.
- 2** Launch a web browser.
- 3** Connect to 192.168.1.1. A login screen displays.
- 4** Enter the user name and password. The home screen displays.
- 5** Select Network > SNTP > NTP Server. You can configure the ONU to synchronize local time with internet time servers.

FIGURE 9-1. SNTP



# *Configuring Static Routing*

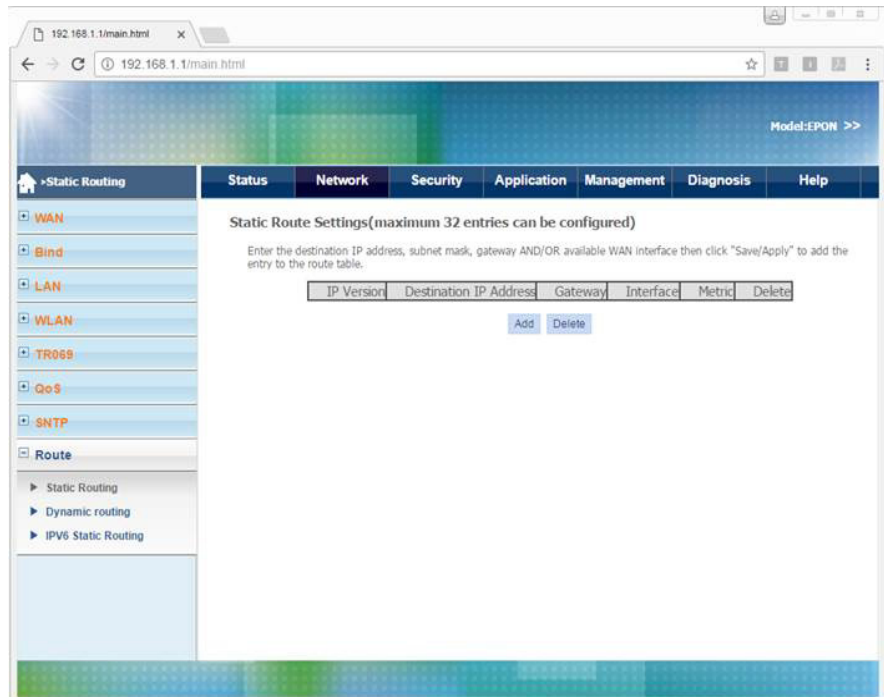
---

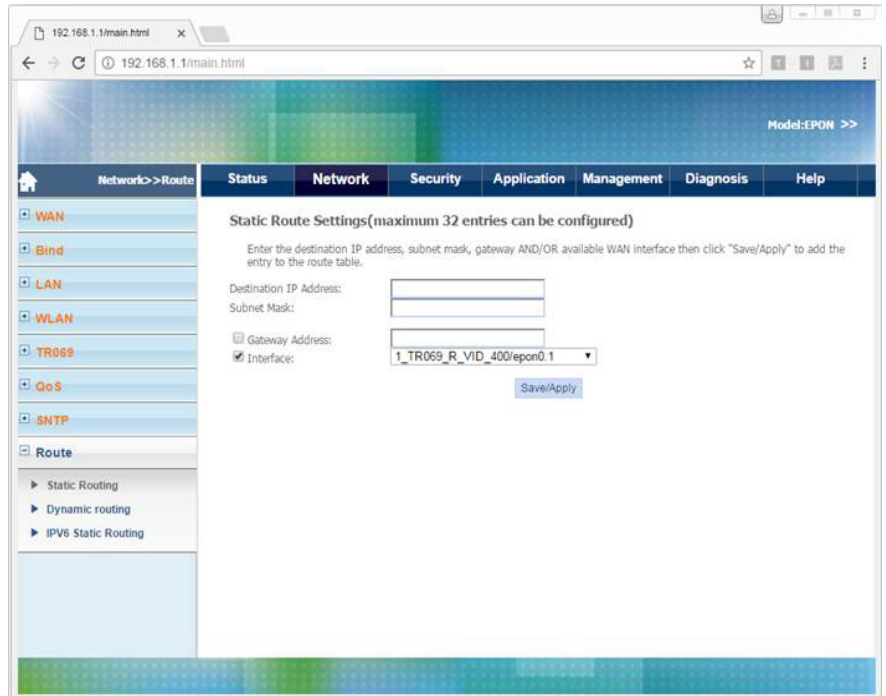
## *Configuring Static Routing*

Follow these steps to configure static routing.

- 1** Connect your device to LAN 1 or Wireless.
- 2** Launch a web browser.
- 3** Connect to 192.168.1.1. A login screen displays.
- 4** Enter the user name and password. The home screen displays.
- 5** Select Network > Route > Static Routing. You can configure or delete a static route.

FIGURE 10-1. Route > Static Routing





## *Restarting the Device*

---

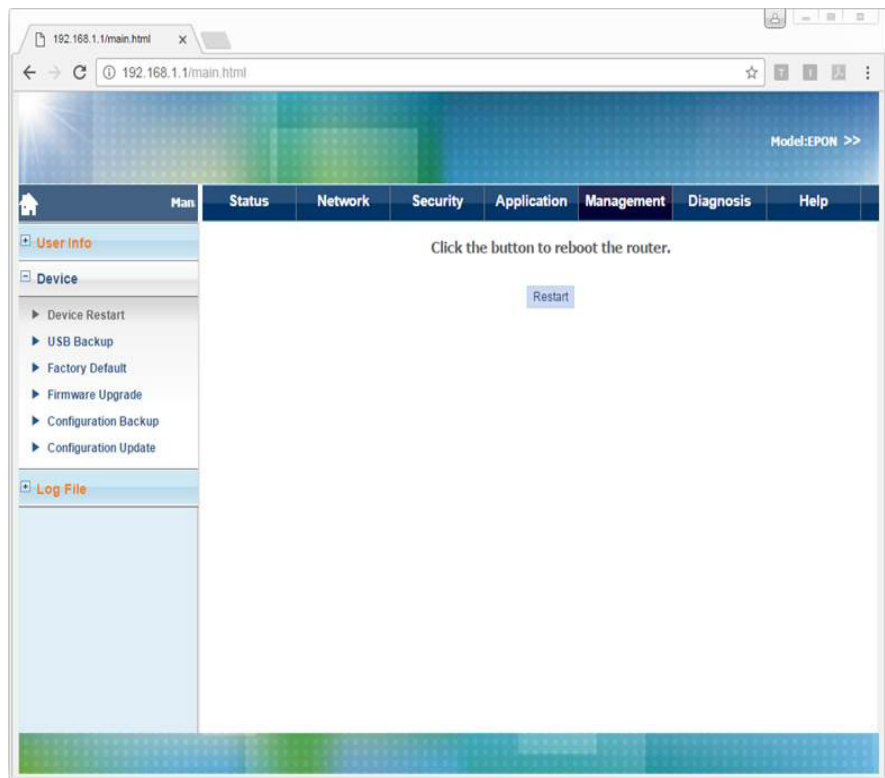
### *Restarting the Device*

Follow these steps to restart the device.

- 1** Connect your device to LAN 1 or Wireless.
- 2** Launch a web browser.
- 3** Connect to 192.168.1.1. A login screen displays.
- 4** Enter the user name and password. The home screen displays.
- 5** Select Management > Device> Device Restart.
- 6** Click Restart.



FIGURE 11-1. Device Restart



## *Reverting to the Default Setting*

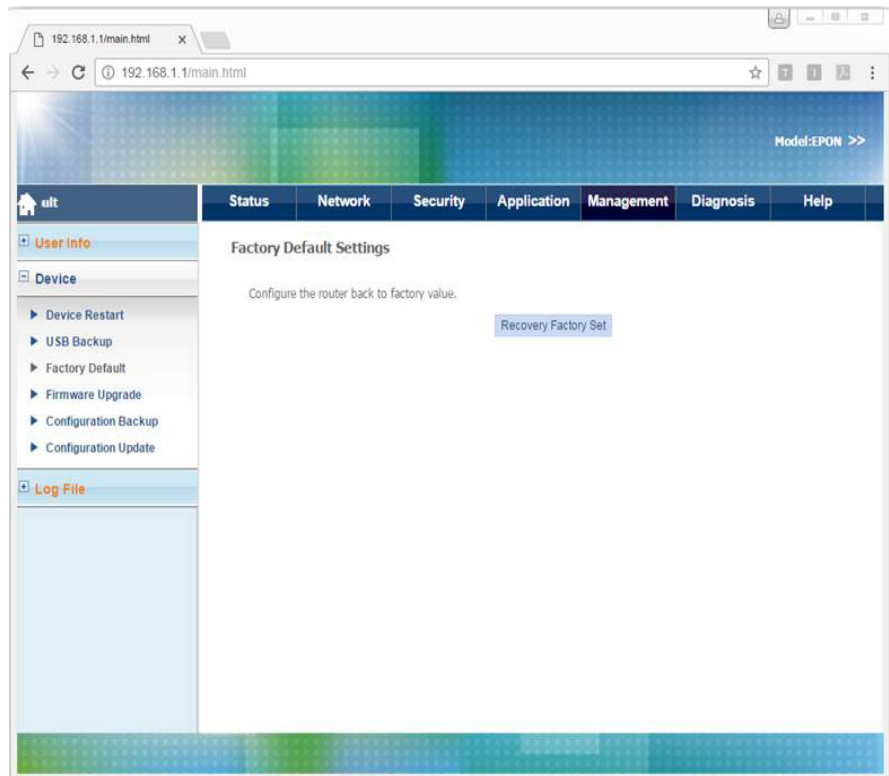
---

### *Reverting to the Default Setting*

Follow these steps to revert to the default setting.

- 1 Connect your device to LAN 1 or Wireless.
- 2 Launch a web browser.
- 3 Connect to 192.168.1.1. A login screen displays.
- 4 Enter the user name and password. The home screen displays.
- 5 Select Management > Device> Factory Default.
- 6 Click Recovery Factory Set.

FIGURE 12-1. Factory Default



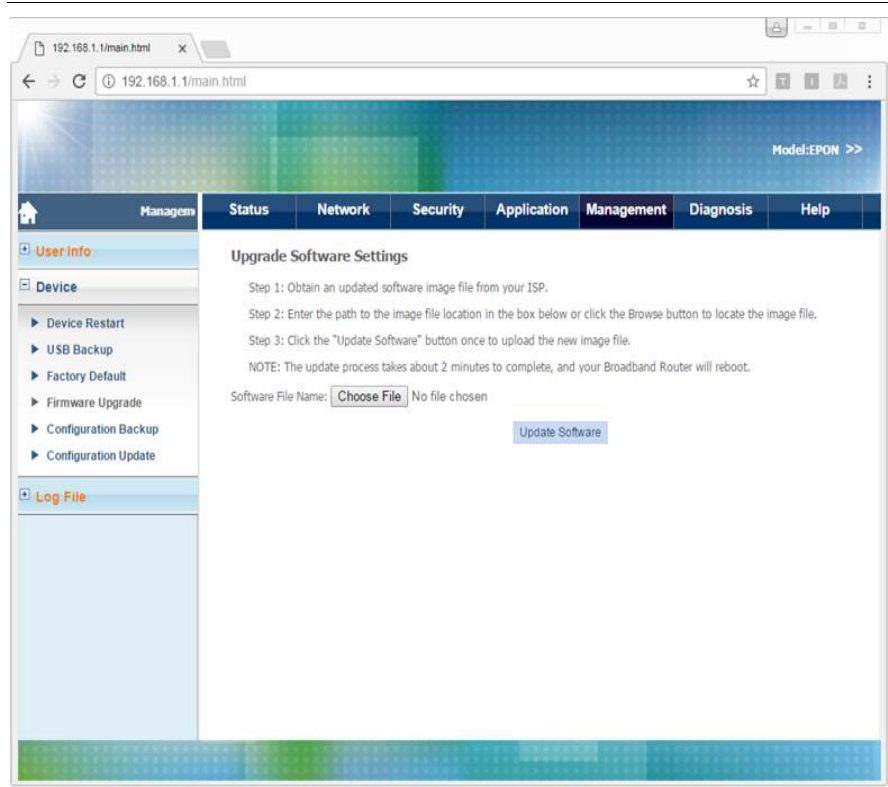
---

## *Upgrading Software*

Follow these steps to upgrade software.

- 1 Connect your device to LAN 1 or Wireless.
- 2 Launch a web browser.
- 3 Connect to 192.168.1.1. A login screen displays.
- 4 Enter the user name and password. The home screen displays.
- 5 Select Management > Device> Firmware Upgrade.
- 6 Choose the file, and then click Upgrade Software.

FIGURE 13-1. Firmware Upgrade



## *Configuring Backups*

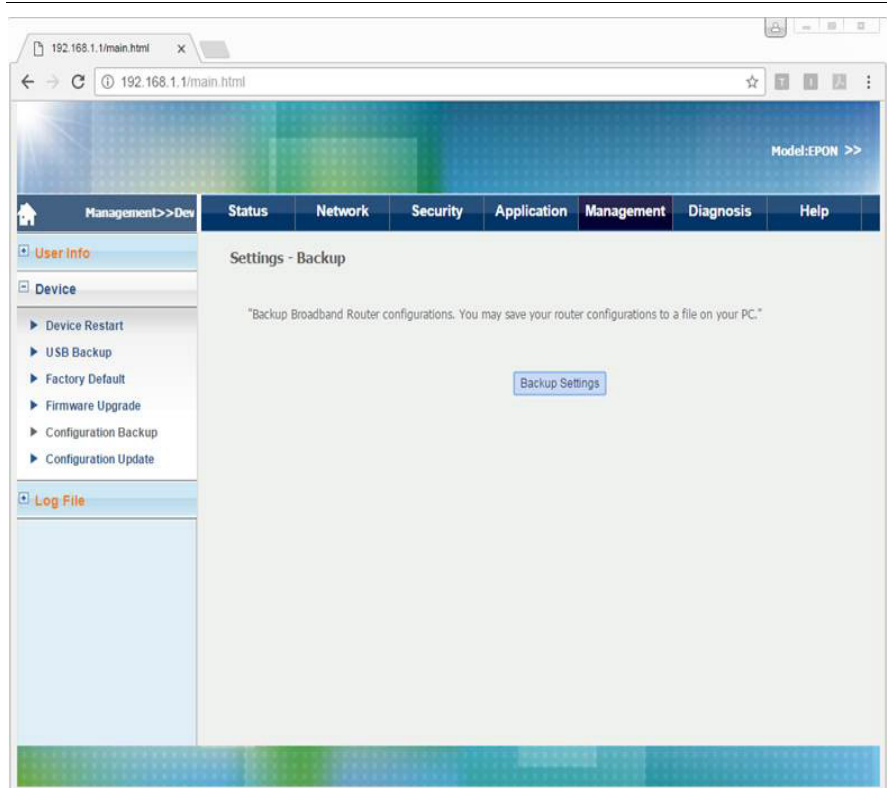
---

### *Configuring Backups*

Follow these steps to configure backups.

- 1 Connect your device to LAN 1 or Wireless.
- 2 Launch a web browser.
- 3 Connect to 192.168.1.1. A login screen displays.
- 4 Enter the user name and password. The home screen displays.
- 5 Select Management > Device> Configuration Backup.
- 6 To save the current configuration to a backup file, click Backup Settings.

FIGURE 14-1. Configuration Backup



---

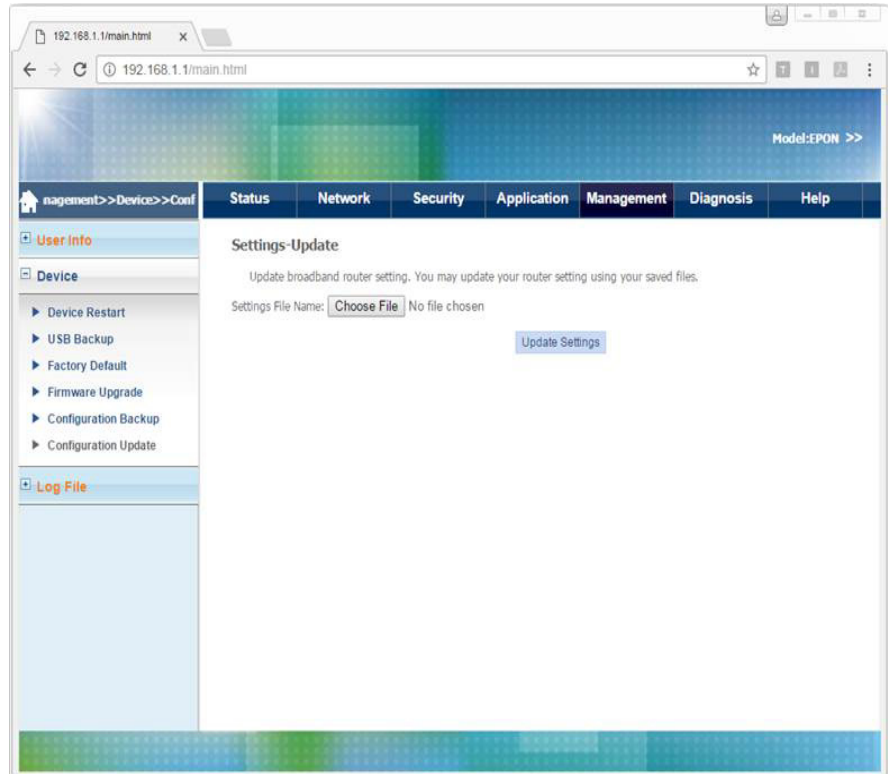
## *Restoring Configuration Files*

Follow these steps to restore a configuration file.

- 1** Connect your device to LAN 1 or Wireless.
- 2** Launch a web browser.
- 3** Connect to 192.168.1.1. A login screen displays.
- 4** Enter the user name and password. The home screen displays.
- 5** Select Management > Device> Configuration Update.
- 6** To restore a previously saved configuration file, choose the file, and then click Update Settings.



FIGURE 15-1. Configuration Update

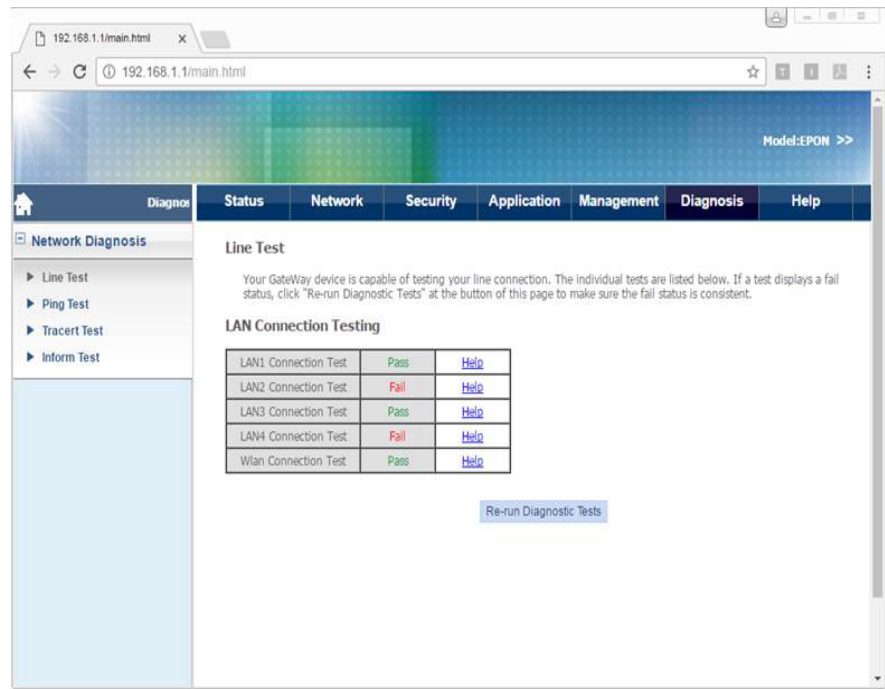


---

## *Performing Diagnostics*

Follow these steps to perform diagnostic testing.

- 1** Connect your device to LAN 1 or Wireless.
- 2** Launch a web browser.
- 3** Connect to 192.168.1.1. A login screen displays.
- 4** Enter the user name and password. The home screen displays.
- 5** Select **Diagnosis > Network Diagnosis > Line Test**. You can view the current statuses of LAN and Wi-Fi connections.
- 6** To refresh, click **Re-run Diagnostic Tests**.

**FIGURE 16-1. Line Test**

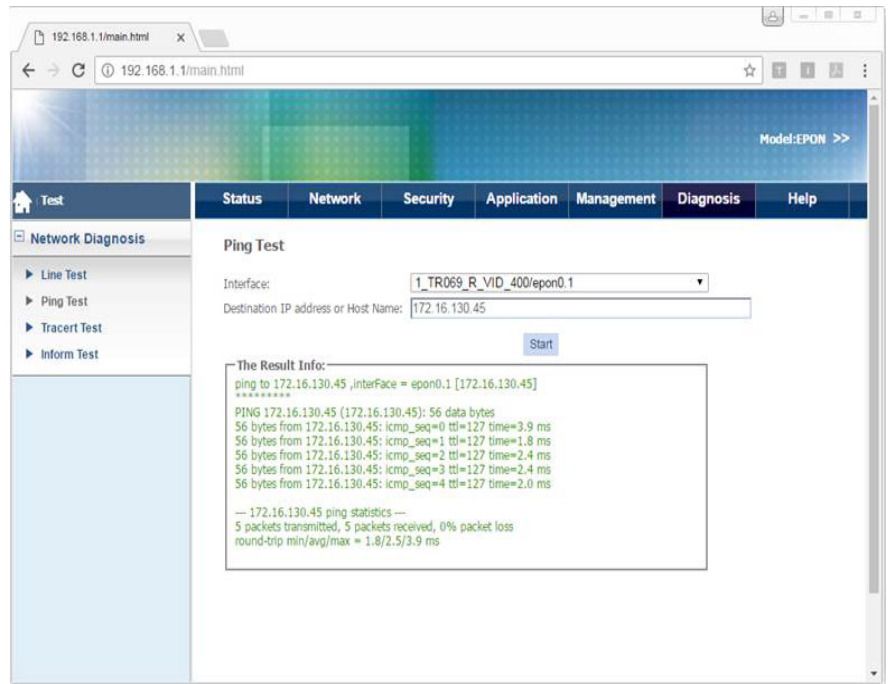
---

## *Performing Ping Tests*

Follow these steps to perform a ping test.

- 1 Connect your device to LAN 1 or Wireless.
- 2 Launch a web browser.
- 3 Connect to 192.168.1.1. A login screen displays.
- 4 Enter the user name and password. The home screen displays.
- 5 Select Diagnosis> Network Diagnosis> Ping Test.
- 6 Select the Interface.
- 7 Enter the Destination IP address or Host Name.
- 8 Click Start.

FIGURE 16-2. Ping Test



## Performing Tracert Tests

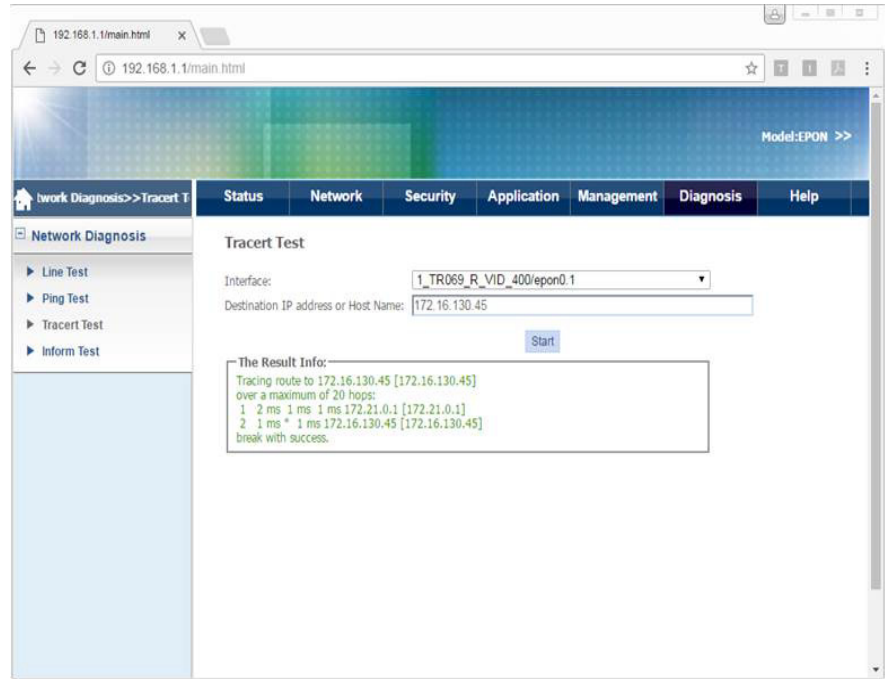
A tracert test traces the route of packets from an interface to the destination host.

Follow these steps to perform a tracert test.

- 1 Connect your device to LAN 1 or Wireless.
- 2 Launch a web browser.
- 3 Connect to 192.168.1.1. A login screen displays.
- 4 Enter the user name and password. The home screen displays.
- 5 Select Diagnosis> Network Diagnosis> Tracert Test.
- 6 Select the Interface.
- 7 Enter the Destination IP address or Host Name.

8 Click Start.

**FIGURE 16-3. Tracert Test**



---

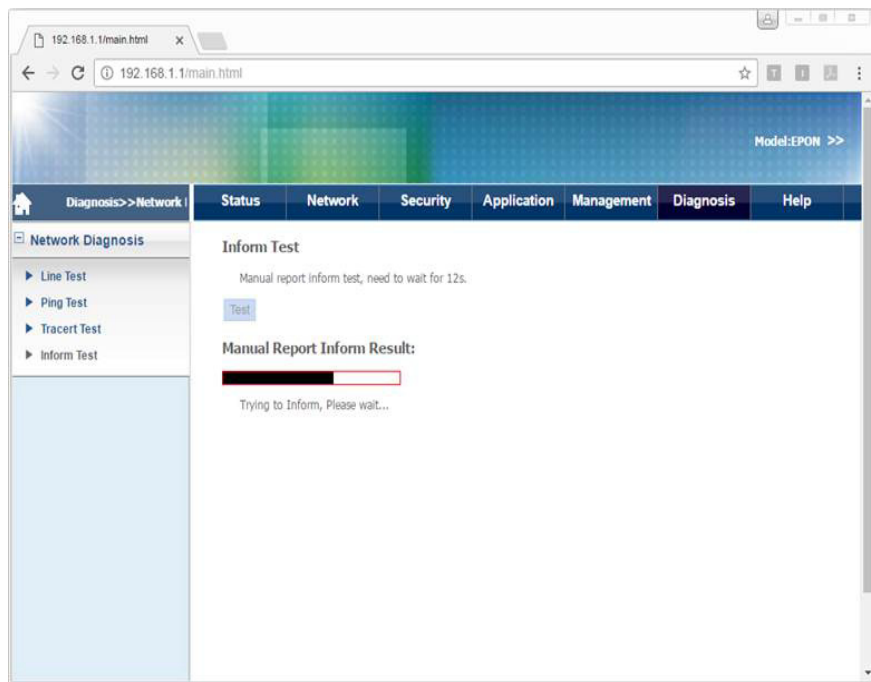
## *Performing Inform Tests*

An inform test sends an inform message to the ACS server.

Follow these steps to perform an inform test.

- 1 Connect your device to LAN 1 or Wireless.
- 2 Launch a web browser.
- 3 Connect to 192.168.1.1. A login screen displays.
- 4 Enter the user name and password. The home screen displays.
- 5 Select Diagnosis > Network Diagnosis > Inform Test.
- 6 Click Test.

FIGURE 16-4. Inform Test



---

# *6304W ONU Gateway Installation Guide*

**Version 1.01**

**ubiQuoss Inc.**  
**[www.ubiQuoss.com](http://www.ubiQuoss.com)**

Specifications and product availability are subject to change without notice.  
© 2017 ubiQuoss. All rights reserved.

---

<b>CHAPTER 1</b>	<i>Pre-Installation Considerations</i> . . . . .	<b>1</b>
	Electric Safety . . . . .	1
	Device Position . . . . .	1
	Safety Cautions . . . . .	2
<b>CHAPTER 2</b>	<i>LED Descriptions</i> . . . . .	<b>3</b>
<b>CHAPTER 3</b>	<i>Buttons and Interfaces</i> . . . . .	<b>5</b>
<b>CHAPTER 4</b>	<i>Installing the ONU</i> . . . . .	<b>7</b>
	Connecting the Fiber . . . . .	7
	Connecting the Power Adapter and Power Cord . . . . .	8
	Connecting the Ethernet Port . . . . .	8
	Connecting the POTS Port . . . . .	8
<b>CHAPTER 5</b>	<i>Configuring the ONU</i> . . . . .	<b>11</b>
	Accessing the Internet . . . . .	11
	Setting up WLAN . . . . .	12
	Setting Security . . . . .	12
	Downloading to a USB . . . . .	13
	Managing the ONU . . . . .	13
<b>CHAPTER 7</b>	<i>Troubleshooting</i> . . . . .	<b>15</b>
	[Problem 1] The Power LED does not light. . . . .	15
	[Problem 2] The Link LED does not light. . . . .	15
	[Problem 3] The Voice LED does not light. . . . .	16
<b>APPENDIX A</b>	<i>Product Specifications</i> . . . . .	<b>17</b>



---

This chapter provides pre-installation considerations that the user should note before installing and using the ONU.

---

## *Electric Safety*

- Ensure that there are no inflammable, conductive or moist objects near the ONU.
- It is recommended to plug the optical interface into the jacket when it is not in use. Avoid direct eye exposure to the laser emitted from the optical interface. Wear safety glasses to protect your eyes.

---

## *Device Position*

- A running electric device easily generates heat. Ensure that the device is placed in a well-ventilated environment.
- Keep the device away from heat and water.

- Ensure that the power supply is reliable. The input voltage fluctuation range should be lower than 10%. The power plug should not share one socket with a hair drier, an iron or a refrigerator.

---

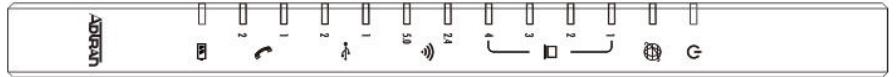
### *Safety Cautions*

- Read the user manual carefully before using the ONU.
- Do not use any accessory that is not shipped with the ONU without prior consent of the manufacturer. This may cause fire or product damage.
- Use the power adapter that is shipped with the ONU.
- Do not place any object on top of the ONU.
- Keep the ONU dry, ventilated, and clean.
- If lightning occurs, unplug the power plug and all connection cables to protect the ONU against lightning effects.
- Clean the ONU using a soft and dry cloth rather than liquid or atomizers. Turn off the ONU before cleaning it.
- Turn off the ONU when it is not in use.
- Keep ventilation holes clean and prevent any object from entering ventilation holes. This may cause short circuit and further cause product damage or fire. Do not spray liquid on the surface of the ONU.
- Do not open the case of the ONU, especially when it is turned on.
- Before plugging or unplugging the ONU, ensure that the power is off. This is to avoid surge.
- Be careful when unplugging the ONU, as the transformer may be very hot.

# LED Descriptions

This chapter describes conditions indicated by LEDs on the front panel of the ONU.

**FIGURE 2-1. Front Panel**



**TABLE 2-1. LED Descriptions**

LED	Status	Description
Power	On	Power is on and working.
	Off	Power is off or there is a power failure.
BAT	On	Battery is disconnected.
	Off	Battery is connected.
Internet	On	Internet is connected and operational.
	Off	Internet is disconnected.

**TABLE 2-1. LED Descriptions**

---

<b>LED</b>	<b>Status</b>	<b>Description</b>
Link 1-4	On	Link is connected and operational.
	Blinking	Data is being transmitted.
	Off	Link is disconnected.
Voice 1-2	On	Voice is connected and operational.
	Blinking	Data is being transmitted.
	Off	Voice is disconnected.
USB	On	USB is connected and operational.
	Blinking	Data is being transmitted.
	Off	USB is disconnected.

This chapter describes the buttons and interfaces on the rear panel of the ONU.

**FIGURE 3-1. Rear Panel**



**TABLE 3-1. LED Descriptions**

Interface/Button	Description
PON	Fiber port.
RESET	Reboots ONU and restores factory default configuration.
POWER	DC power connector.
ON/OFF Switch	Turns power supply on/off.
POTS 1-2	Telephone interface.
GE 1-4	Ethernet interface.
WLAN	Turns WLAN on/off.
WPS-2.4G	Connects to Wi-Fi.

**TABLE 3-1. LED Descriptions**

---

<b>Interface/Button</b>	<b>Description</b>
WPS-5G	Connects to Wi-Fi.
USB	USB port.
UPS	UPS port.

## *Installing the ONU*

---

This chapter provides instructions on how to install the ONU.

---

### *Connecting the Fiber*

Before connecting the product to the fiber, you need to install the fiber. Follow these steps to install the fiber.

- 1 Remove the dust cap from the optical interface.
- 2 Insert the fiber into the flange plate.
- 3 Connect the fiber from the flange plate to the optical interface on the wall.

#### *Note*

- *When a fiber is not in use, cover the optical interface of the ONU and put the dust cap back on the optical fiber. Prevent dust pollution or water immersion, as this may cause damage to the fiber and optical interface of the ONU.*
- *If fibers need to be fixed during parallel cabling, do not fasten the fibers too tightly. Avoid fiber extrusion, as this may cause fiber damage.*

---

### *Connecting the Power Adapter and Power Cord*

Follow these steps to connect the power adapter to the ONU.

- 1 Insert one end of the power cord attached with the power adapter into the POWER connector.
- 2 Press the ON/OFF button to ensure that the power status is ON.
- 3 Check whether the Power LED is on. If it is on, the power supply is normal. Otherwise, check whether the power cord and the power adapter are correctly connected.

Follow these steps to connect the UPS to the ONU.

- 1 Insert one end of the power cord attached with the UPS device into the UPS slot.
- 2 Press the ON/OFF button to ensure that the power status is ON.
- 3 Check whether the Power LED is on. If it is on, the power supply is normal. Otherwise, check whether the power cord and the UPS device are correctly connected.

---

### *Connecting the Ethernet Port*

Follow these steps to connect to the Ethernet port.

- 1 Insert one end of a network cable with an RJ-45 connector into the Ethernet port.
- 2 Insert the other end of the cable to a PC or Switch.
- 3 Check whether the Link LED is on. If it is on, the link is connected and operational. Otherwise, check whether the cable is plugged in properly.

---

### *Connecting the POTS Port*

Follow these steps to connect to the POTS port.

- 1 Insert one end of a cable with an RJ-11 connector into the POTS port.
- 2 Insert the other end of the cable to a telephone.



- 3 Check whether the Voice LED is on. If it is on, voice is connected and operational. Otherwise, check whether the cable is plugged in properly.

## *Configuring the ONU*

---

This chapter provides instructions on how to configure the ONU.

---

### *Accessing the Internet*

After you have successfully connected the ONU, you need to configure the ONU so that it can obtain an IP address.

If the ONU only uses a serial number to access the Internet:

- After connecting the fiber to the ONU, wait approximately two minutes for an Internet connection to be established.

If the ONU uses a serial number and EPON password to access the Internet:

- 1 Type 192.168.1.1 in the address field of a web browser. A login screen appears.
- 2 Enter the user name and password.
- 3 Click Network > TR069 > EPON Password. A dialog box appears.
- 4 Enter your EPON password in the text box and the click SAVE.
- 5 Wait approximately one minute for an Internet connection to be established.

---

## *Setting up WLAN*

Follow these steps to set WLAN parameters.

- 1 Type 192.168.1.1 in the address field of a web browser. A login screen appears.
- 2 Enter the user name and password.
- 3 Click Network > WLAN. A dialog box appears.

The following table provides a brief description of WLAN parameters.

**TABLE 5-1. WLAN Parameters**

---

<b>Parameter</b>	<b>Description</b>
Select SSID	Select a WLAN you want to modify.
Network Authentication	Select the authentication method. Mixed WPA2/WPA-PSK is recommended.
WPA Pre-shared Key	Enter the WLAN password.
WPA Encryption	Select the encryption method. TKIP+AES is recommended.

---

## *Setting Security*

Follow these steps to set security.

- 1 Type 192.168.1.1 in the address field of a web browser. A login screen appears.
- 2 Enter the user name and password.
- 3 Click Network > Security. A dialog box appears.

The following table provides a brief description of the available Security features.

**TABLE 5-2. Security Features**

---

<b>Feature</b>	<b>Description</b>
URL Filter	Permit or forbid access to specified addresses.
MAC Filter	Permit or forbid access to the Internet.
Firewall Level	Select from low, middle, high.
DDOS Setup	Set up DDOS to enhance security.

---

## *Downloading to a USB*

Follow these steps to download files to a USB.

- 1** Type 192.168.1.1 in the address field of a web browser. A login screen appears.
- 2** Enter the user name and password.
- 3** Click Network > Family Storage. A dialog box appears.

The following table provides a brief description of the settings required for USB usage.

**TABLE 5-3. USB Settings**

---

<b>Setting</b>	<b>Description</b>
User Name	User name authorized by the file server that permits the download of files.
Password	User password.
Port	Port used.
Remote URL	URL that indicates the position of the file.

---

## *Managing the ONU*

Follow these steps to manage the ONU.

- 1 Type 192.168.1.1 in the address field of a web browser. A login screen appears.
- 2 Enter the user name and password.
- 3 Click Network > Management. A dialog box appears.

The following table provides a brief description of the Management features.

**TABLE 5-4. Management Features**

---

<b>Feature</b>	<b>Description</b>
User Info	You can change your password.
Device	You can restart the ONU.

---

This chapter lists some typical symptoms and check points.

---

*[Problem 1] The Power LED does not light.*

Check points:

- 1 Check whether the power cord is properly connected to the POWER connector and the outlet.
- 2 Check whether the proper power adapter is connected.

---

*[Problem 2] The Link LED does not light.*

Check points:

- 1 Check whether the ONU is authorized by the carrier.
- 2 Check whether the proper network cables are used.
- 3 Check whether the network cable connection is working.

---

*[Problem 3] The Voice LED does not light.*

Check points:

- 1 Check whether the telephone line connection is working.
- 2 Check whether the ONU is on.

# *Product Specifications*

---

**TABLE A-1. Physical Dimensions**

<b>Description</b>	<b>Specification</b>
Dimensions (H x W x D)	1.45 in x 5.58 in x 9.60 in (37 mm x 141.8 mm x 243.9 mm)
Weight	Max. 1.10 lbs (0.5 kg)

---

**TABLE A-2. Electrical Specifications**

<b>Specification</b>	<b>Operational</b>
Power Adapter Input	12 V/2A, Output power 24W
Power Consumption	Max. 15 W



**TABLE A-3. Environmental Specifications**

---

<b>Specification</b>	<b>Operational</b>
Temperature	-41°F to 113°F (-5° to 45°C)
Humidity	5 to 95% (non-condensing)

**TABLE A-4. Interface Specifications**

---

<b>Description</b>	<b>Specification</b>
Interfaces	<ul style="list-style-type: none"><li>• One optical interface (SC/APC single mode)</li><li>• Two RJ-11 interfaces</li><li>• Four RJ-45 connectors</li></ul>

**TABLE A-5. Data Transmission Rates**

---

<b>Feature</b>	<b>Rate</b>
Uplink	1.25 Gbps
Downlink	1.25 Gbps

**TABLE A-6. Standard**

---

<b>Feature</b>	<b>Standard</b>
EPON	IEEE 802.3ah

## FCC Regulations

This device complies with part 15 of the FCC Rules. Operation is subject to the following two conditions: (1) This device may not cause harmful interference, and (2) this device must accept any interference received, including interference that may cause undesired operation.

NOTE: This equipment has been tested and found to comply with the limits for a Class B digital device, pursuant to part 15 of the FCC Rules. These limits are designed to provide reasonable protection against harmful interference in a residential installation. This equipment generates, uses and can radiate radio frequency energy and, if not installed and used in accordance with the instructions, may cause harmful interference to radio communications. However, there is no guarantee that interference will not occur in a particular installation. If this equipment does cause harmful interference to radio or television reception, which can be determined by turning the equipment off and on, the user is encouraged to try to correct the interference by one or more of the following measures:

- Reorient or relocate the receiving antenna.
- Increase the separation between the equipment and receiver.
- Connect the equipment into an outlet on a circuit different from that to which the receiver is connected.
- Consult the dealer or an experienced radio/ TV technician for help.

Changes or modifications not expressly approved by the manufacturer could void the user's authority to operate the equipment.

## FCC RF Radiation Exposure Statement

This equipment complies with FCC RF radiation exposure limits set forth for an uncontrolled environment. This device and its antenna must not be co-located or operating in conjunction with any other antenna or transmitter.

“To comply with FCC RF exposure compliance requirements, this grant is applicable to only Mobile Configurations. The antennas used for this transmitter must be installed to provide a separation distance of at least 20 cm from all persons and must not be co-located or operating in conjunction with any other antenna or transmitter.”