

Travel Router (NRWN1) Quick Guide

1. Process:

(1) Model : **Billionton Systems Inc. / NRWN1**

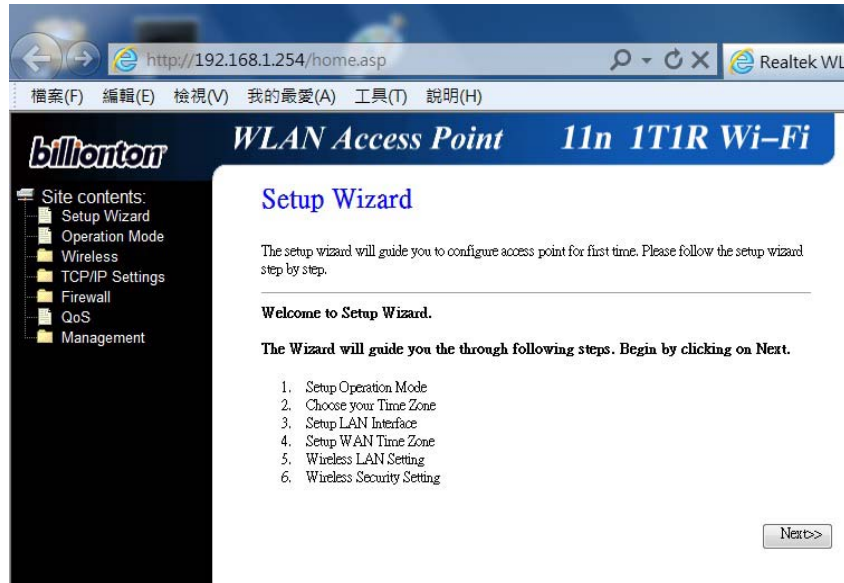
(1) First, Please connect your PC to the **LAN** port on the router with RJ-45 cable. Default Mode is **“Router Mode”**

(2) Plug the USB cable (micro-USB cable) into the DV 5V port and put the other end into an USB power source

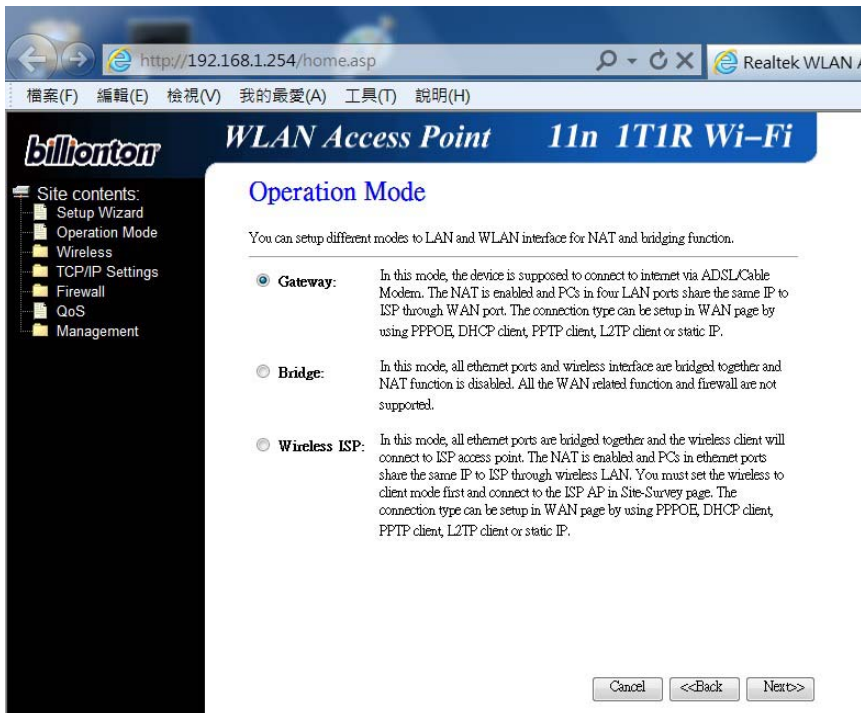
2. Setup:

(1) Open internet browser (Ex. IE) and press the URL **192.168.1.254** then the page of “Setup Wizard” appear.

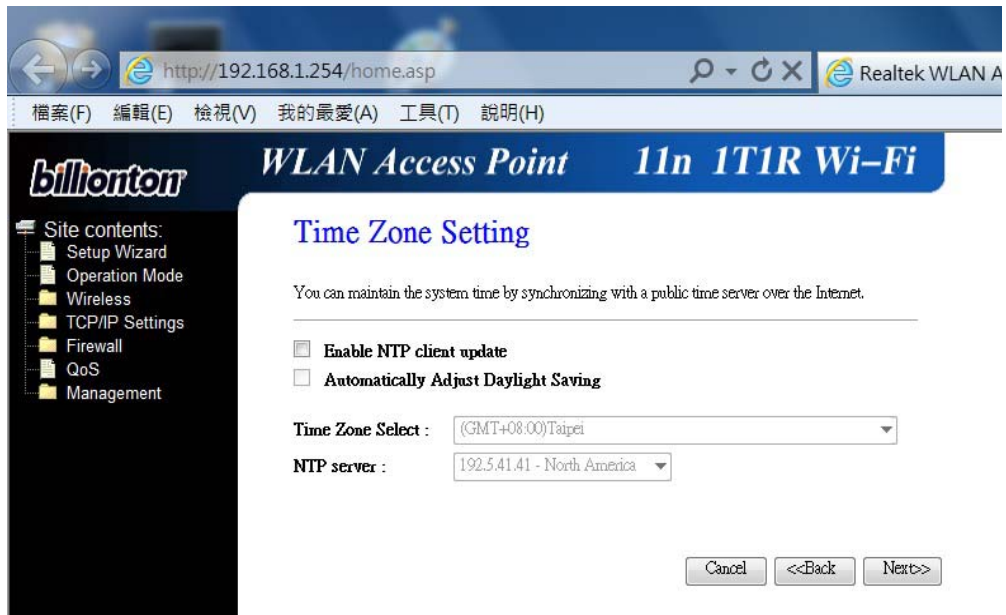
(2) Press “Next”



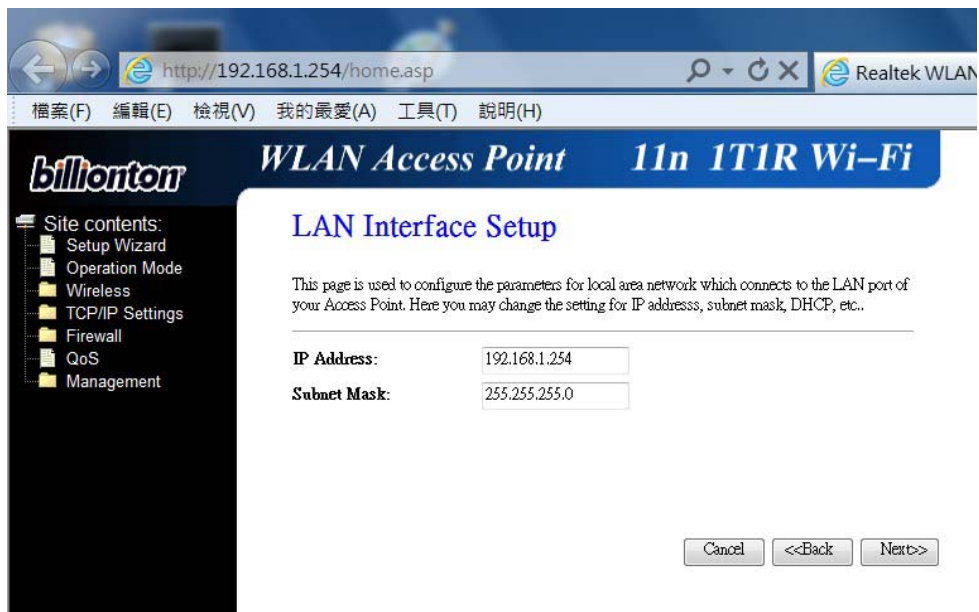
(3) Select “Gateway mode” and “Next”.



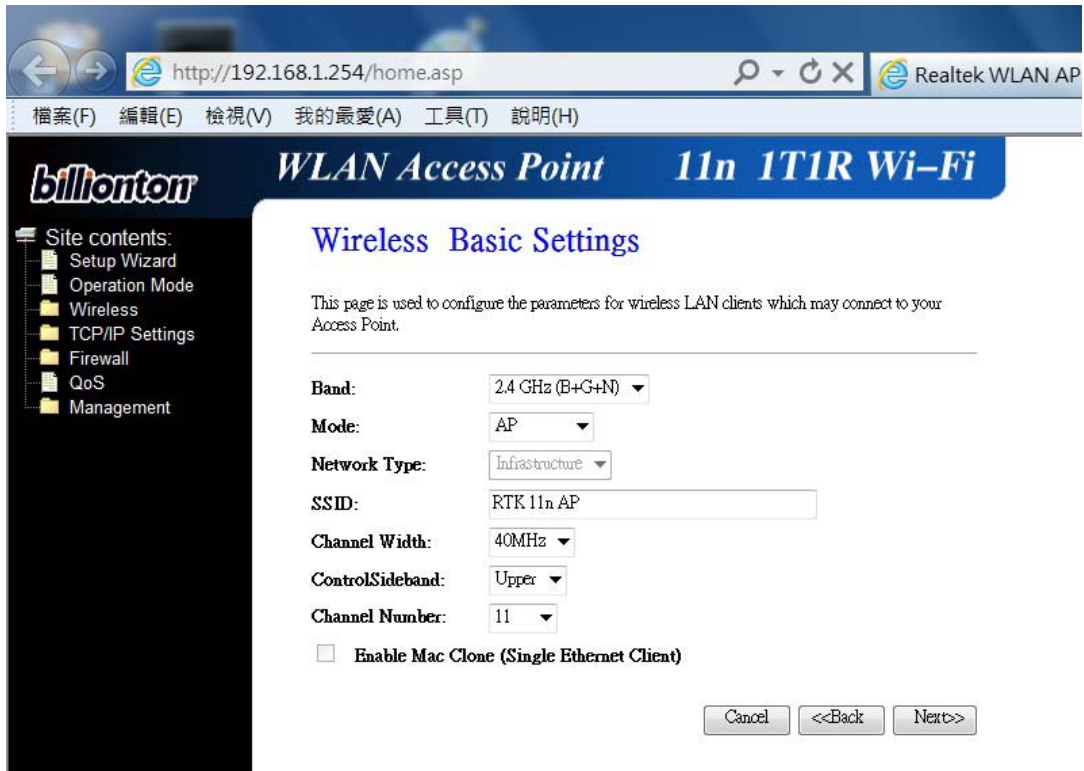
(4) Setup correct “Time Zone Select” and press “Next”.



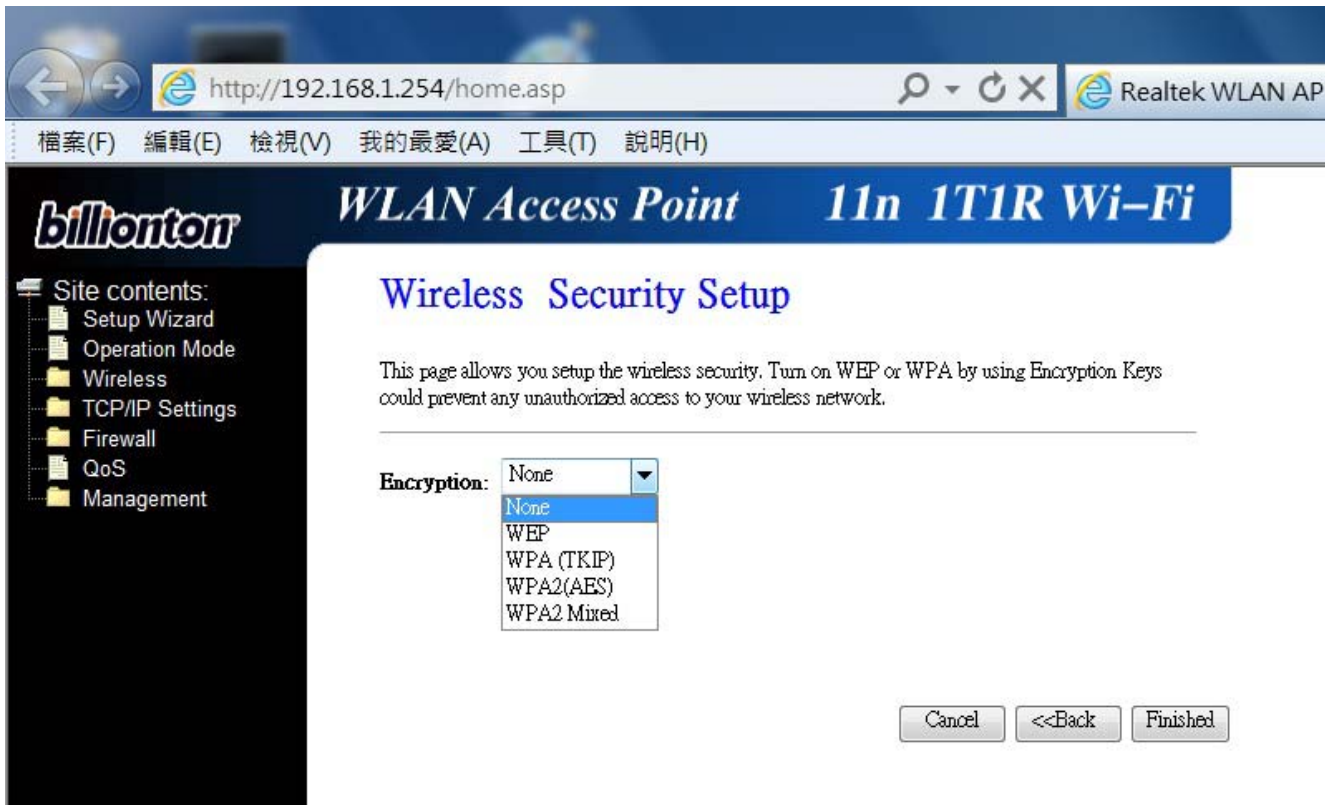
(5) Default setup is 192.168.1.254, press “Next”.



(9) Press “Next”.



(10) Setup the wireless security. The default encryption keys is 123456789, please update it yourself and press “finish”.



(11) Finish setup, router need reboot for setting effective.



(12) Remark:

For product available in the USA/Canada market, only channel 1~11 can be operated.
Selection of other channels is not possible.

Federal Communication Commission Interference Statement

This equipment has been tested and found to comply with the limits for a Class B digital device, pursuant to Part 15 of the FCC Rules. These limits are designed to provide reasonable protection against harmful interference in a residential installation. This equipment generates, uses and can radiate radio frequency energy and, if not installed and used in accordance with the instructions, may cause harmful interference to radio communications. However, there is no guarantee that interference will not occur in a particular installation. If this equipment does cause harmful interference to radio or television reception, which can be determined by turning the equipment off and on, the user is encouraged to try to correct the interference by one or more of the following measures:

- Reorient or relocate the receiving antenna.
- Increase the separation between the equipment and receiver.
- Connect the equipment into an outlet on a circuit different from that to which the receiver is connected.
- Consult the dealer or an experienced radio/TV technician for help.

FCC Caution: Any changes or modifications not expressly approved by the party responsible for compliance could void the user's authority to operate this equipment.

This device complies with Part 15 of the FCC Rules. Operation is subject to the following two conditions: (1) This device may not cause harmful interference, and (2) this device must accept any interference received, including interference that may cause undesired operation.

FCC Radiation Exposure Statement:

This equipment complies with FCC radiation exposure limits set forth for an uncontrolled environment. This equipment should be installed and operated with minimum distance **20cm** between the radiator & your body.