



JHR-AC836M Quick Installation Guide



YICHEN (SHENZHEN) TECHNOLOGY CO.,LTD.

23 F, Building C1, Nanshan Zhiyuan, No. 1001 Xueyuan Road, Xili, Nanshan District,
Shenzhen City, Guangdong, China

website: www.jcgcom.com

Contact Information

[Distribution Enquiry]

Email: marketing@jcg.com.cn

TEL: +86-755-86664000

Whatsapp id: +86-13602656694

[OEM Enquiry]

Email: Zcq@jcg.com.cn

TEL: +86-755-86238512

Contacts: Michael Zhu

[Technical Support]

Email: support@jcg.com.cn

YICHEN (SHENZHEN) TECHNOLOGY CO.,LTD.

JCG JHR-AC836M User Guide

Rear Panel:



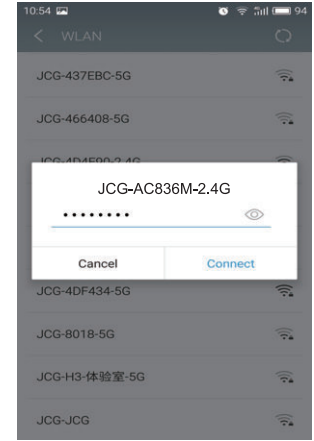
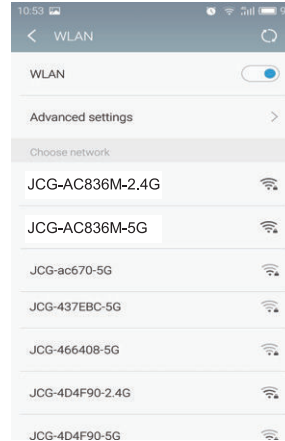
- ① USB Port: Connect to External Hard Drive , USB flash drive and etc.
- ② 1* Wan Port: Connect to XDSL/ Cable Modem/ Ethernet
- ③ 4* Lan Ports: Connect to laptop, computer or other device.
- ④ Power Port: Connect to power adapter
- ⑤ Reset Button: Press it for 5-10 seconds while the router is working and it will reset to factory setting.

Internet Setup

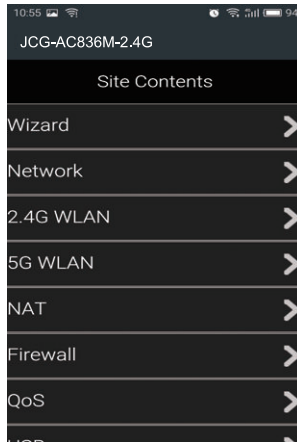
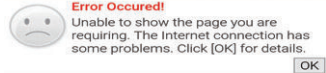
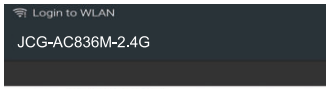
I : Set up Internet by Cell Phone

1. Connect the modem to the WAN port on your router with an Ethernet cable.

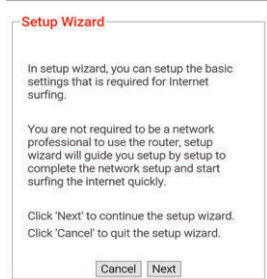
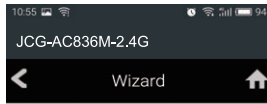
Use the default wireless network name (SSID) and password printed on the product label at the bottom of the router to connect wirelessly. Enter the router password and click “Connect”.



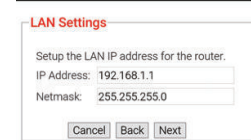
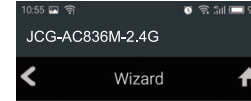
2. A setting notification will display on your phone, click “OK” . Or enter 192.168.1.1 on the address bar of a web browser, then click “OK”. Both ways will take you into a same setting page.



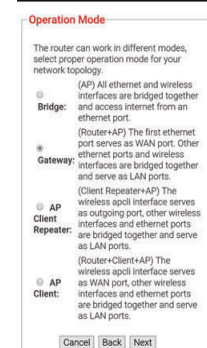
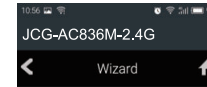
3. Click "Wizard", enter into "Setup Wizard" page, and click "Next".



4. LAN Settings: Kindly recommend you do not change the default settings but click "Next" directly.



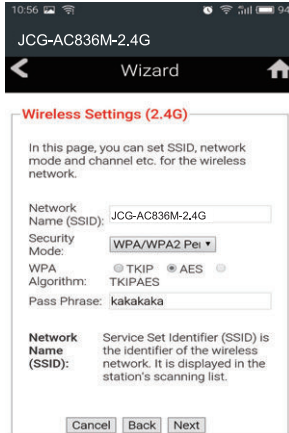
5. Select the default operation mode "Gateway". Click "Next".



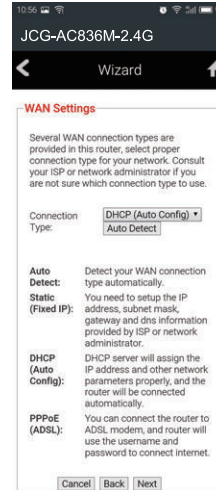
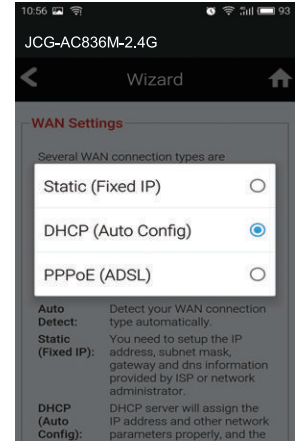
6. Set your new SSID and password for 5G network. Click "Next".



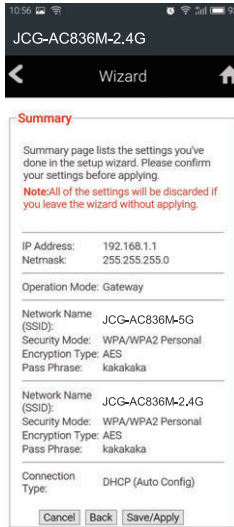
7. Set your new SSID and password for 2.4G network. Click "Next".



8. Select your connection type. E.g. take "DHCP" connection type as an example by the following pictures, click "Next" in the last step.

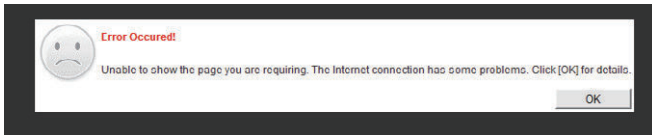


9. Double check the newly-set SSID, password and connection type. Then click the “Save/Apply” button if everything is right. After that, the router will reboot which means all settings are done successfully. If your phone disconnect afterwards, please reconnect to your router with the new SSID and password.

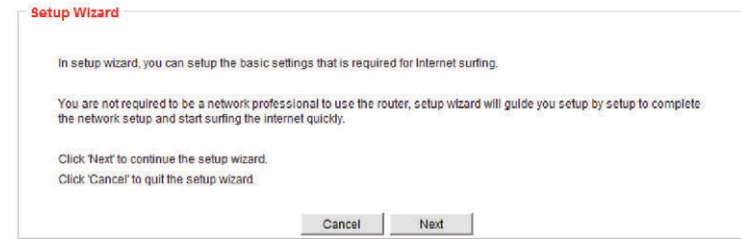
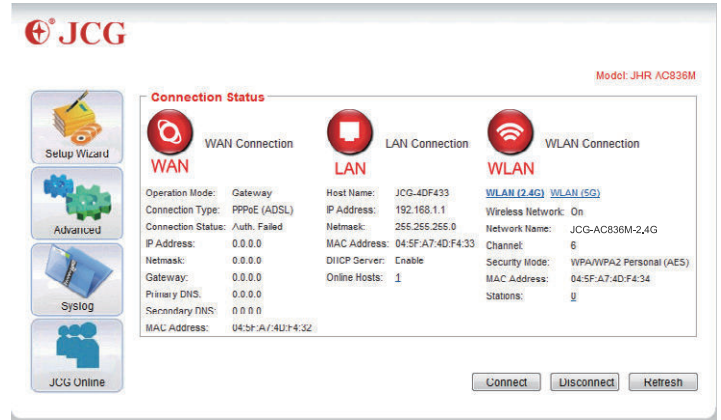


II. Set up the Internet by Computer.

1. Connect the modem to the WAN port on your router with an Ethernet cable. Then connect your router and computer via Ethernet cable(LAN port) or Wi-Fi.
2. A setting notification will display on your computer, click “OK”. Or enter 192.168.1.1 on the address bar of a web browser, then click “OK”. Both ways will take you into a same setting page.



3. Click “Setup Wizard”, and click “Next” in the Setup Wizard page.



4. LAN Settings: Kindly recommend you do not change the default settings of this page and click "Next" directly.

LAN Settings

Setup the LAN IP address for the router.

IP Address:

Netmask:

5. Select the default operation mode "Gateway". Click "Next" .

Operation Mode

The router can work in different modes, select proper operation mode for your network topology.

Bridge: (AP) All ethernet and wireless interfaces are bridged together and access internet from an ethernet port.

Gateway: (Router+AP) The first ethernet port serves as WAN port. Other ethernet ports and wireless interfaces are bridged together and serve as LAN ports.

AP Client Repeater: (Client Repeater+AP) The wireless apcli interface serves as outgoing port, other wireless interfaces and ethernet ports are bridged together and serve as LAN ports.

AP Client: (Router+Client+AP) The wireless apcli interface serves as WAN port, other wireless interfaces and ethernet ports are bridged together and serve as LAN ports.

6. Set your new SSID and password for 5G network. Click "Next".

Wireless Settings (5G)

In this page, you can set SSID, network mode and channel etc. for the wireless network.

Network Name (SSID):

Security Mode:

WPA Algorithm: TKIP AES TKIP/AES

Pass Phrase:

Network Name (SSID): Service Set Identifier (SSID) is the identifier of the wireless network. It is displayed in the station's scanning list.

7. Set your new SSID and password for 2.4G network. Click "Next".

Wireless Settings (2.4G)

In this page, you can set SSID, network mode and channel etc. for the wireless network.

Network Name (SSID):

Security Mode:

WPA Algorithm: TKIP AES TKIP/AES

Pass Phrase:

Network Name (SSID): Service Set Identifier (SSID) is the identifier of the wireless network. It is displayed in the station's scanning list.

8. Select your connection type. E.g, take "DHCP" connection type as an example by the following pictures, click "Next" in the last step.

WAN Settings

Several WAN connection types are provided in this router, select proper connection type for your network. Consult your ISP or network administrator if you are not sure which connection type to use.

Connection Type:

Auto Detect: Detect your WAN connection type automatically.

Static (Fixed IP): You need to setup the IP address, subnet mask, gateway and dns information provided by ISP or network administrator.

DHCP (Auto Config): DHCP server will assign the IP address and other network parameters properly, and the router will be connected automatically.

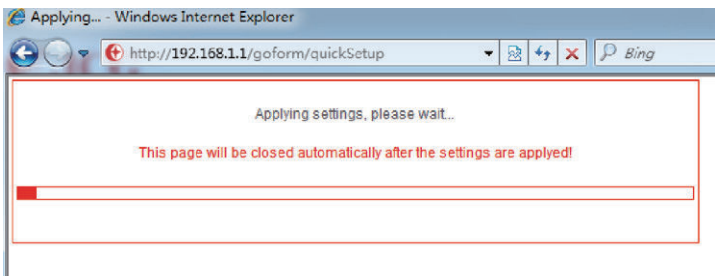
PPPoE (ADSL): You can connect the router to ADSL modem, and router will use the username and password to connect internet.

9. Double check the newly-set SSID, password and connection type. Then click the "Save/Apply" button if everything is right. After that, the router will reboot which means all settings are done. If your phone disconnect, please reconnect with your router with the new SSID and password.

Summary

Summary page lists the settings you've done in the setup wizard. Please confirm your settings before applying.
Note: All of the settings will be discarded if you leave the wizard without applying.

IP Address:	192.168.1.1
Netmask:	255.255.255.0
Operation Mode:	Gateway
Network Name (SSID):	JCG-AC836M-5G
Security Mode:	WPA/WPA2 Personal
Encryption Type:	AES
Pass Phrase:	kakakaka
Network Name (SSID):	JCG-AC836M-2.4G
Security Mode:	WPA/WPA2 Personal
Encryption Type:	AES
Pass Phrase:	kakakaka
Connection Type:	DHCP (Auto Config)



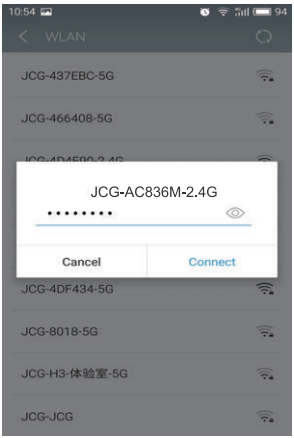
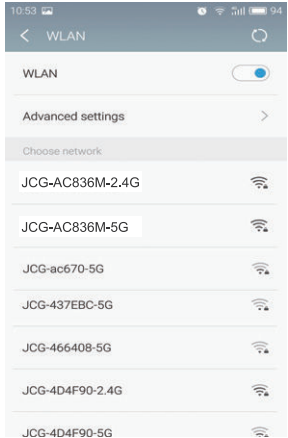
Model: JHR-AC836M

Connection Status

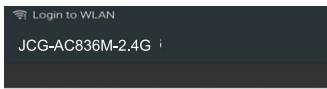
Repeater Mode Setting

I. Set up repeater mode by Cell Phone

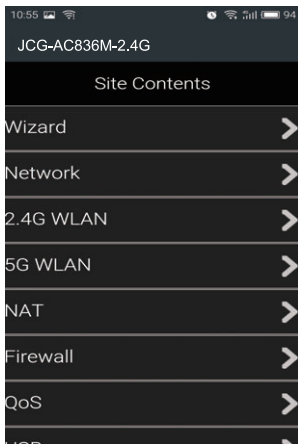
1. Use the default wireless network name (SSID) and password printed on the product label at the bottom of the router to connect wirelessly. Enter the router password and click connect. Don't connect Ethernet cable to the WAN port.



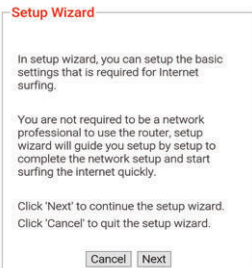
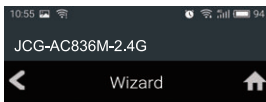
2. The router will send a setting notification to your phone, click “OK”. Or enter 192.168.1.1 on the address bar of a web browser, then click “OK”. Both ways will take you into a same setting page.



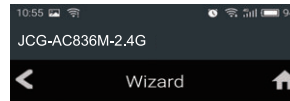
Error Occured!
Unable to show the page you are requiring. The Internet connection has some problems. Click [OK] for details.



3. Click “Wizard”, enter into “Setup Wizard” page, and click “Next”.

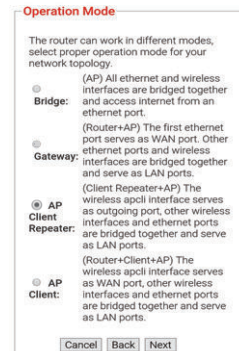
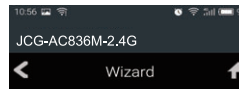


4. LAN Settings: Kindly recommend you do not change the default settings but click “Next” directly.



Copyright © 2010-2016 JCG, All rights reserved.

5. Choose “AP Client Repeater” in the operation mode column. Click “Next”.



6. Set your new SSID and password for 5G wireless network. Click "Next". Please remember them.

Wireless Settings (5G)

In this page, you can set SSID, network mode and channel etc. for the wireless network.

Network Name (SSID): JCG-AC836M-5G

Security Mode: WPA/WPA2 Personal

WPA Algorithm: TKIPAES

Pass Phrase: kqkqkqkq

Network Name (SSID): Service Set Identifier (SSID) is the identifier of the wireless network. It is displayed in the station's scanning list.

Cancel Back Next

7. Set your new SSID and password for 2.4G wireless router network. Click "Next". Please remember them.

Wireless Settings (2.4G)

In this page, you can set SSID, network mode and channel etc. for the wireless network.

Network Name (SSID): JCG-AC836M-2.4G

Security Mode: WPA/WPA2 Personal

WPA Algorithm: TKIPAES

Pass Phrase: kqkqkqkq

Network Name (SSID): Service Set Identifier (SSID) is the identifier of the wireless network. It is displayed in the station's scanning list.

Cancel Back Next

8. Click "Rescan" button to search wireless signal, and select the wireless network which you want to extend, enter its password in the Pass Phrase box.

AP Client Settings

Set the parameters for the AP Client to connection the remote AP properly.

Remote AP SSID: []

MAC Address: [] (Optional)

Security Mode: Disable

Select Remote AP SSID

Scanning... Rescan

AP Client Settings

Set the parameters for the AP Client to connection the remote AP properly.

Remote AP SSID: JCG-AC860M-2.4G

MAC Address: d4:61:2e:b3:a1:70 (Optional)

Security Mode: WPA2 Personal

Encryption Type: AES

Pass Phrase: 12345678

JCG-AC860M-2.4G (d4:61:2e:b3:a1:70)
Channel: 11 (Frequency - 20MHz), Network Mode - 11b/g/n (Infrastructure)
Security enabled wireless network (WPA2PSK/AES), WPS Enabled (NONE)

9. Double check the newly-set wireless SSID & password of the wireless signal(both 2.4G & 5G). Then click the "Save/Apply" button if everything is right. After that, the router will reboot which means all settings are done. If your phone disconnect, please reconnect to your router with the new SSID and password.

Summary

Summary page lists the settings you've done in the setup wizard. Please confirm your settings before applying.

Note: All of the settings will be discarded if you leave the wizard without applying.

IP Address: 192.168.1.1
Netmask: 255.255.255.0

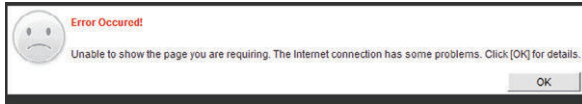
Operation Mode: AP Client Repeater

Network Name: JCG-AC836M-5G (SSID):
Security Mode: WPA/WPA2 Personal
Encryption Type: AES
Pass Phrase: kqkqkqkq

Applying settings, please wait...

II. Set up repeater mode by computer.

1. Connect your router and computer via Ethernet cable(LAN port) or Wi-Fi. Don't connect Ethernet cable to the WAN port.
2. The router will send a setting notification to your computer, click "OK" . Or enter 192.168.1.1 on the address bar of a web browser, then click "OK". Both ways will take you into a same setting page.



3. Click "Setup Wizard" in the setting page, and click "Next" in the following page.

The "Connection Status" page for a JCG router (Model: JHR-AC836M). It shows three connection types: WAN, LAN, and WLAN. The WAN connection is in "Gateway" mode. The LAN connection has IP 192.168.1.1 and Netmask 255.255.255.0. The WLAN connection is in "WLAN (2.4G)" mode. On the left, there are navigation buttons for "Setup Wizard", "Advanced", "Syslog", and "JCG Online". At the bottom, there are "Connect", "Disconnect", and "Refresh" buttons.

4. LAN Settings: Kindly recommend you do not change the default settings in that page and click "Next" directly.

The "LAN Settings" page. It asks to "Setup the LAN IP address for the router." The IP Address is set to 192.168.1.1 and the Netmask is 255.255.255.0. There are "Cancel", "Back", and "Next" buttons at the bottom.

5. Choose "AP Client Repeater" in the operation mode column. Click "Next" .

The "Operation Mode" page. It lists four modes: Bridge, Gateway, AP Client Repeater (selected), and AP Client. The AP Client Repeater mode is described as: "The wireless apcli interface serves as outgoing port, other wireless interfaces and ethernet ports are bridged together and serve as LAN ports." There are "Cancel", "Back", and "Next" buttons at the bottom.

6. Set your new SSID and password for 5G wireless network. Click "Next".

The "Wireless Settings (5G)" page. It asks to set the SSID, network mode, and channel. The Network Name (SSID) is JCG-AC836M-5G, Security Mode is WPA/WPA2 Personal, and WPA Algorithm is TKIP. The Pass Phrase is kakakaka. There are "Cancel", "Back", and "Next" buttons at the bottom.

7. Set your new SSID and password for 2.4G wireless network.
Click "Next".

Wireless Settings (2.4G)

In this page, you can set SSID, network mode and channel etc. for the wireless network.

Network Name (SSID): JCG-AC860M-2.4G
Security Mode: WPA/WPA2 Personal
WPA Algorithm: TKIP AES TKIP/AES
Pass Phrase: kakakaka

Network Name (SSID): Service Set Identifier (SSID) is the identifier of the wireless network. It is displayed in the station's scanning list.

Cancel Back Next

8. Click "Rescan" button to search Wireless signal, and select the wireless network which you want to extend, enter the wireless network's password in the pass phrase box.

AP Client Settings

Set the parameters for the AP Client to connection the remote AP properly.

Remote AP SSID:
MAC Address: (Optional)
Security Mode: Disable

Select Remote AP SSID

Scanning...

Rescan

Cancel Back Next

AP Client Settings

Set the parameters for the AP Client to connection the remote AP properly.

Remote AP SSID: JCG-AC860M-2.4G
MAC Address: d4.61.2e.b3.a1.70 (Optional)
Security Mode: WPA2 Personal
Encryption Type: AES
Pass Phrase: 12345678

Channel - 1 (Frequency - 20MHz), Network Mode - 11b/g/h (Infrastructure)
Security enabled wireless network (WPA1PSKWPA2PSK/AES)

JCG-AC860M-2.4G (d4.61.2e.b3.a1.70)
Channel - 1 (Frequency - 20/40MHz), Network Mode - 11b/g/h (Infrastructure)
Security enabled wireless network (WPA2PSK/AES), WPS Enabled (NONE)

ChinaNet-yzQw (a8.ad.3d.4c.a7.24)
Channel - 1 (Frequency - 20MHz), Network Mode - 11b/g/h (Infrastructure)
Security enabled wireless network (WPA2PSK/AES), WPS Enabled (NONE)

ChinaNet-utr6 (70.a8.e3.5d.dc.94)
Channel - 3 (Frequency - 20MHz), Network Mode - 11b/g/h (Infrastructure)
Security enabled wireless network (WPA1PSKWPA2PSK/TKIP/AES)

JCG-AC860M-2.4G (04.5f.a7.24.56.88)
Channel - 3 (Frequency - 20MHz), Network Mode - 11b/g/h (Infrastructure)
None security wireless network

JCG-525724 (00:e0:4c:52:57:24)
Channel 6 (Frequency: 50MHz), Network Mode: 11b/g/h (Infrastructure)

Cancel Back Next

9. Double check the newly-set wireless SSID. Then click the “Save/Apply” button if everything is right. After that, the router will reboot which means all settings are done. If your phone disconnect, please reconnect with your router with the new SSID and password.

Summary

Summary page lists the settings you've done in the setup wizard. Please confirm your settings before applying.
Note:All of the settings will be discarded if you leave the wizard without applying.

IP Address: 192.168.1.1
Netmask: [255.255.255.0](#)

Operation Mode: AP Client Repeater

Network Name (SSID): JCG-AC836M-5G
Security Mode: WPA/WPA2 Personal
Encryption Type: AES
Pass Phrase: kqkqkqkq

Network Name (SSID): JCG-AC836M-2.4G
Security Mode: WPA/WPA2 Personal
Encryption Type: AES
Pass Phrase: kqkqkqkq

Remote AP SSID: JCG-AC860M-2.4G
MAC Address: d4:61:2e:b3:a1:70
Security Mode: WPA2 Personal
Encryption Type: AES
Pass Phrase: 12345678

Applying settings, please wait...

This page will be closed automatically after the settings are applied!

Frequent Asked Questions:

1. What should I do if my phone could not search for Wi-Fi signal from AC836M?

Please check and make sure every cable is connected correctly and properly. And then set the router again by entering 192.168.1.1 in the address bar of a web browser. Or reset the router to factory setting by pressing the reset button. If the Wi-Fi signal remains unsearchable, please reboot the router. If you still could not find the Wi-Fi signal after trying the above steps, please contact JCG customer service for help.

2. How to reset the AC836M router to default setting?

Use the end of a paper clip or a similar object to press and hold the Reset button on the back of the router for at least seven seconds. Wait for about 1-2 minutes. And all indicator lights will turn off and then turn on which indicates that the router has returned to factory setting.

(Note: Please refer to the above connect way to re-set your router after the router returns to factory setting.)

3. What should I do if my phone could not enter into the setting page?

Please make sure that your phone's connected Wi-Fi is from JCG AC836M router. If your phone connect to another wireless device, although you enter 192.168.1.1 in address bar, your phone still could not jump to setting page. (To make sure that you could set successfully, kindly suggest you neglect or forget the password of other connected networks in your network manager software)

4. During setting period, why my phone could not jump to the setting page after the router reboot?

Your phone may connect to another wireless device automatically when your router reboots. Please make sure that your phone connects to JCG AC836M router.

FCC Information and Copyright

Operations in the 5.15~5.25GHz band are restricted to indoor usage only.

This equipment has been tested and found to comply with the limits for a Class B digital device, pursuant to part 15 of the FCC Rules.

These limits are designed to provide reasonable protection against harmful interference in a residential installation. This equipment generates,

uses and can radiate radio frequency energy and, if not installed and used in accordance with the instructions, may cause harmful interference

to radio communications. However, there is no guarantee that interference will not occur in a particular installation. If this equipment does

cause harmful interference to radio or television reception, which can be determined by turning the equipment off and on, the user is

encouraged to try to correct the interference by one or more of the following measures:

- Reorient or relocate the receiving antenna.
- Increase the separation between the equipment and receiver.
- Connect the equipment into an outlet on a circuit different from that to which the receiver is connected.
- Consult the dealer or an experienced radio/TV technician for help.

This device complies with part 15 of the FCC Rules. Operation is subject to the following two conditions:

- (1) This device may not cause harmful interference, and
- (2) this device must accept any interference received, including interference that may cause undesired operation.

changes or modifications not expressly approved by the party responsible for compliance could void the user's authority to operate the equipment.

This equipment complies with FCC radiation exposure limits set forth for an uncontrolled environment. This equipment should be installed and operated with minimum distance 20cm between the radiator & your body. This transmitter must not be co-located or operating in conjunction with any other antenna or transmitter.