

IP Addr. Enter the IP address of the remote VPN device. This can be static or dynamic, depending on the settings of the remote VPN device. The IP address you enter is NOT the IP address of the local Gateway.

- **IP Address** Enter the IP address of the VPN device at the other end of the tunnel.

FQDN Enter the Fully Qualified Domain Name (FQDN) of the remote VPN device.

- **Domain Name** Enter the domain name of the VPN device at the other end of the tunnel.

Any Select this option to have the Router accept requests from any IP address.

Encryption Using encryption helps make your connection more secure. Select **DES** or **3DES** (3DES is recommended because it is more secure). You may choose either of these, but it must be the same type of encryption that is being used by the VPN device at the other end of the tunnel. If you do not choose to encrypt your data, select **Disabled**.

Authentication Authentication acts as another level of security. Select **MD5** or **SHA** (SHA is recommended because it is more secure). As with encryption, either of these may be selected, if the VPN device at the other end of the tunnel is using the same type of authentication.

Key Management

A key is a string of letters and/or numbers used for authentication or encryption. Select **Auto (IKE)** for automatic key management by the Internet Key Exchange (IKE) protocol, or select **Manual** for manual key management. The two methods are described below.

Auto (IKE)

PFS PFS (Perfect Forward Secrecy) enables automatic re-keying to enhance security. Select **Enabled** to ensure that the initial key exchange and IKE proposals are secure. Otherwise, select **Disabled**.

Pre-shared Key Enter a series of numbers or letters. Based on this word, which MUST be entered at both ends of the tunnel if this method is used, a key is generated to scramble (encrypt) the data being transmitted over the tunnel, where it is unscrambled (decrypted). You may use any combination of up to 24 numbers or letters in this field. No special characters or spaces are allowed.

Key Lifetime You may have the key expire at the end of a time period. Enter the number of seconds you'd like the key to be useful, or leave it blank for the key to last indefinitely. The default is **3600** seconds.

Manual

VPN> Manual Key Management

Encryption Key If you chose DES for your Encryption setting, enter 16 hexadecimal characters, or if you chose 3DES, enter 48 hexadecimal characters.

Authentication Key If you chose MD5 for your Authentication setting, enter 32 hexadecimal characters, or if you chose SHA, enter 40 hexadecimal characters.

Inbound SPI Enter the Inbound Security Parameter Index (SPI). This is the Outbound SPI for the remote VPN device.

Outbound SPI Enter the Outbound Security Parameter Index (SPI). This is the Inbound SPI for the remote VPN device.

Status

The status of the connection is shown.

The following settings are available if Auto (IKE) is selected.

Connect Click this button to connect your VPN tunnel.

View Logs To view the logs, click **View Logs**.

Incoming Log Table

The table shows the Source IP and Destination Port Number of incoming traffic.

VPN > Incoming Log Table

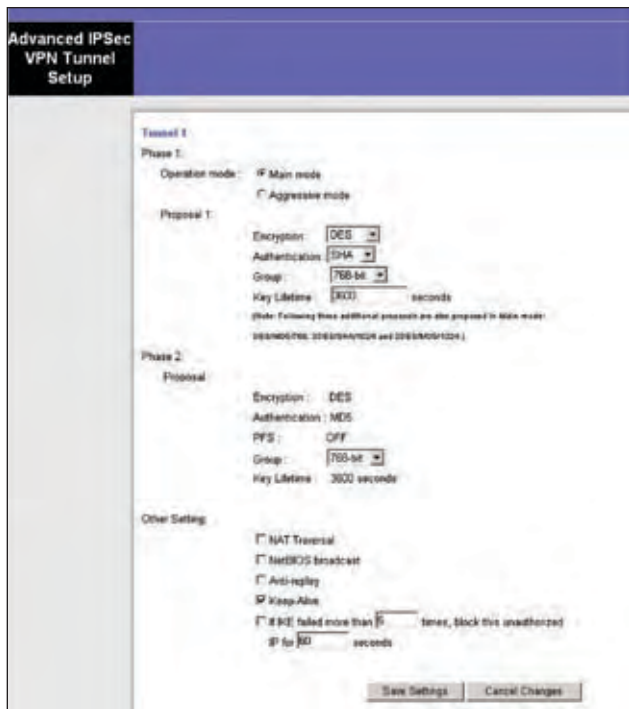
Click **Refresh** to update the log. Click **Close** to return to the VPN screen.

Advanced Settings Before configuring these settings, click **Save Settings** on the VPN screen to apply your changes, or click **Cancel Changes** to cancel your changes.

Then click **Advanced Settings** to configure additional settings.

Advanced IPSec VPN Tunnel Setup

Phase 1 is when the two endpoints negotiate parameters for key exchange. Phase 2 is when they negotiate parameters for data exchange.



VPN> Advanced IPsec VPN Tunnel Setup

Phase 1

Phase 1 is used to create a Security Association (SA), often called the IKE SA. After Phase 1 is completed, Phase 2 is used to create one or more IPsec SAs, which are then used to key IPsec sessions.

Operation Mode There are two modes: Main and Aggressive, and they exchange the same IKE payloads in different sequences. Main mode is more common; however, some people prefer Aggressive mode because it is faster. Main mode is for normal usage and includes more authentication requirements than Aggressive mode. Main mode is recommended because it is more secure. No matter which mode is selected, the Router will accept both Main and Aggressive requests from the remote VPN device.

Proposal 1

A proposal is a set of parameters that the initiator sends and the responder examines for acceptability.

Encryption Select the length of the key used to encrypt and decrypt ESP packets. Select **DES** or **3DES**. 3DES is recommended because it is more secure.

Authentication Select the method used to authenticate ESP packets. Select **MD5** or **SHA**. SHA is recommended because it is more secure.

Group Select a Diffie-Hellman group, **768-bit** or **1024-bit**. Diffie-Hellman refers to a cryptographic technique that uses public and private keys for encryption and decryption.

Key Lifetime You may optionally select to have the key expire at the end of a time period of your choosing. Enter the number of seconds you'd like the key to be used until a re-key negotiation between each endpoint is completed. The default is **3600** seconds.

Phase 2

Proposal

Encryption The encryption method selected in Phase 1 is displayed.

Authentication The authentication method selected in Phase 1 is displayed.

PFS The status of PFS is displayed.

Group Select a Diffie-Hellman group, **768-bit** or **1024-bit**. Diffie-Hellman refers to a cryptographic technique that uses public and private keys for encryption and decryption.

Key Lifetime The key lifetime selected in Phase 1 is displayed.

Other Setting

NAT Traversal Select this option if the remote device is behind a Network Address Translation (NAT) device.

NetBIOS broadcast Select this option to enable NetBIOS traffic to pass through the VPN tunnel. This should be used if the local network does not include a WINS server and the remote device(s) need to find local devices by their NetBIOS names.

Anti-replay Packets sent through an IPsec tunnel contain sequencing numbers to let the receive detect if a substitution has occurred. Select this option to enable the Anti-replay protection, which keeps track of sequence numbers as packets arrive, ensuring security at the IP packet level.

Keep-Alive Select this option to have the Router periodically check your Internet connection. If the tunnel is disconnected, then the Router will automatically re-establish your connection.

If IKE failed more than _ times, block this unauthorized IP for _ seconds IKE failure may indicate an intrusion attempt. You can set a limit on the number of consecutive failed requests allowed from the same IP address. You can also specify the amount of time that the Router ignores further requests from that IP address.

Click **Save Settings** to apply your changes, or click **Cancel Changes** to cancel your changes. Then close this screen to return to the *VPN* screen.

On the *VPN* screen, click **Save Settings** to apply your changes, or click **Cancel Changes** to cancel your changes.

Access Restrictions > Internet Access

The *Internet Access* screen allows you to block or allow specific kinds of Internet usage and traffic, such as Internet access, designated services, and websites during specific days and times.



Access Restrictions > Internet Access

Internet Access Policy

Access Policy Access can be managed by a policy. Use the settings on this screen to establish an access policy (after **Save Settings** is clicked). Selecting a policy from the drop-down menu will display that policy's settings. To delete a policy, select that policy's number and click **Delete This Policy**. To view all the policies, click **Summary**.

Summary

The policies are listed with the following information: No., Policy Name, Access, Days, Time, and status (Enabled). To enable a policy, select **Enabled**. To delete a policy, click **Delete**. Click **Save Settings** to save your changes, or click **Cancel Changes** to cancel your changes. To return to the *Internet Access Policy* screen, click **Close**.

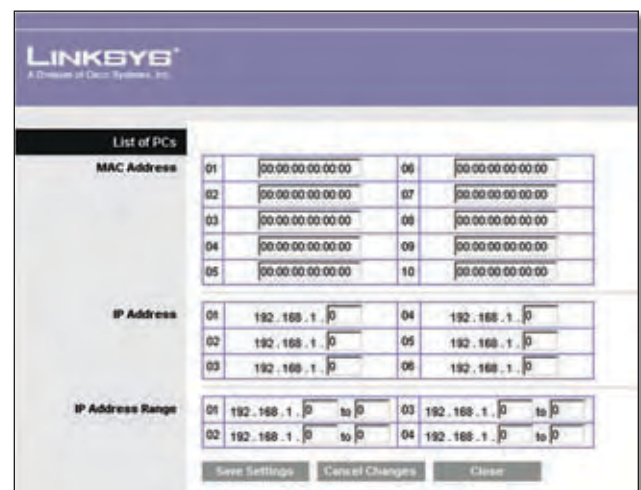


Summary

Status Policies are disabled by default. To enable a policy, select the policy number from the drop-down menu, and select **Enabled**.

To create a policy, follow steps 1-11. Repeat these steps to create additional policies, one at a time.

1. Select a number from the *Access Policy* drop-down menu.
2. Enter a Policy Name in the field provided.
3. To enable this policy, select **Enabled**.
4. Click **Edit List** to select which PCs will be affected by the policy. The *List of PCs* screen appears. You can select a PC by MAC address or IP address. You can also enter a range of IP addresses if you want this policy to affect a group of PCs. After making your changes, click **Save Settings** to apply your changes, or click **Cancel Changes** to cancel your changes. Then click **Close**.



List of PCs

5. Select the appropriate option, **Deny** or **Allow**, depending on whether you want to block or allow Internet access for the PCs you listed on the *List of PCs* screen.

- Decide which days and what times you want this policy to be enforced. Select the individual days during which the policy will be in effect, or select **Everyday**. Then enter a range of hours and minutes during which the policy will be in effect, or select **24 Hours**.
- You can block websites with specific URL addresses. Enter each URL in a separate *Website Blocking by URL Address* field.
- You can also block websites using specific keywords. Enter each keyword in a separate *Website Blocking by Keyword* field.
- You can filter access to various services accessed over the Internet, such as FTP or telnet. (You can block up to three applications per policy.)

From the Applications list, select the application you want to block. Then click the >> button to move it to the Blocked List. To remove an application from the Blocked List, select it and click the << button.

- If the application you want to block is not listed or you want to edit a service's settings, enter the application's name in the *Application Name* field. Enter its range in the **Port Range** fields. Select its protocol from the *Protocol* drop-down menu. Then click **Add**.

To modify a service, select it from the Application list. Change its name, port range, and/or protocol setting. Then click **Modify**.

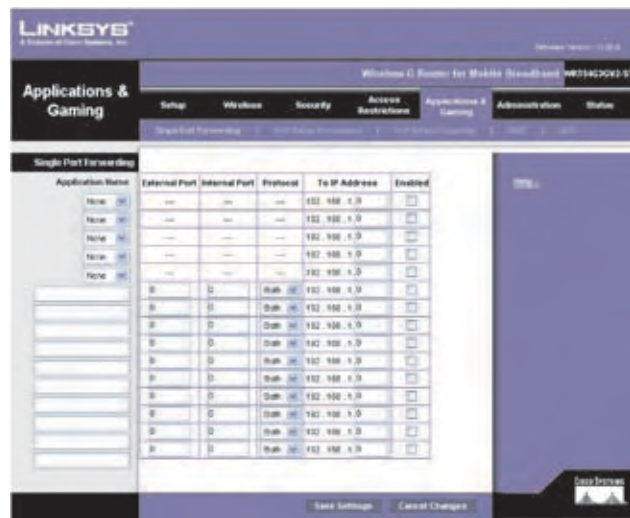
To delete a service, select it from the Application list. Then click **Delete**.

- Click **Save Settings** to save the policy's settings. To cancel the policy's settings, click **Cancel Changes**.

Applications and Gaming > Single Port Forwarding

The *Single Port Forwarding* screen allows you to customize port services for common applications on this screen.

When users send these types of requests to your network via the Internet, the Router will forward those requests to the appropriate servers (computers). Before using forwarding, you should assign static IP addresses to the designated servers (use the DHCP Reservation feature on the *Basic Setup* screen).



Applications and Gaming > Single Port Forwarding

Single Port Forwarding

Common applications are available for the first five entries. Select the appropriate application. Then enter the IP address of the server that should receive these requests. Select **Enabled** to activate this entry.

For additional applications, complete the following fields:

Application Name Enter the name you wish to give the application. Each name can be up to 12 characters.

External Port Enter the external port number used by the server or Internet application. Check with the Internet application documentation for more information.

Internal Port Enter the internal port number used by the server or Internet application. Check with the Internet application documentation for more information.

Protocol Select the protocol used for this application, either **TCP** or **UDP**, or **Both**.

To IP Address For each application, enter the IP address of the PC that should receive the requests. If you assigned a static IP address to the PC, then you can click **DHCP Reservation** on the *Basic Setup* screen to look up its static IP address.

Enabled For each application, select **Enabled** to enable port forwarding.

Click **Save Settings** to apply your changes, or click **Cancel Changes** to cancel your changes.

Applications and Gaming > Port Range Forwarding

The *Port Range Forwarding* screen allows you to set up public services on your network, such as web servers, ftp servers, e-mail servers, or other specialized Internet applications. (Specialized Internet applications are any applications that use Internet access to perform functions

such as videoconferencing or online gaming. Some Internet applications may not require any forwarding.)

When users send these types of requests to your network via the Internet, the Router will forward those requests to the appropriate servers (computers). Before using forwarding, you should assign static IP addresses to the designated servers (use the DHCP Reservation feature on the *Basic Setup* screen).

If you need to forward all ports to one computer, click the **DMZ** tab.



Applications and Gaming > Port Range Forwarding

Port Range Forwarding

To forward a port, enter the information on each line for the criteria required.

Application Name In this field, enter the name you wish to give the application. Each name can be up to 12 characters.

Start~End Port Enter the number or range of port(s) used by the server or Internet applications. Check with the Internet application documentation for more information.

Protocol Select the protocol used for this application, either **TCP** or **UDP**, or **Both**.

To IP Address For each application, enter the IP address of the PC running the specific application. If you assigned a static IP address to the PC, then you can click **DHCP Reservation** on the *Basic Setup* screen to look up its static IP address.

Enabled Select **Enabled** to enable port forwarding for the applications you have defined.

Click **Save Settings** to apply your changes, or click **Cancel Changes** to cancel your changes.

Applications & Gaming > Port Range Triggering

The *Port Range Triggering* screen allows the Router to watch outgoing data for specific port numbers. The IP address of the computer that sends the matching data is remembered by the Router, so that when the requested data returns through the Router, the data is pulled back to the proper computer by way of IP address and port mapping rules.



Applications and Gaming > Port Range Triggering

Port Range Triggering

Application Name Enter the application name of the trigger.

Triggered Range For each application, enter the starting and ending port numbers of the triggered port number range. Check with the Internet application documentation for the port number(s) needed.

Forwarded Range For each application, enter the starting and ending port numbers of the forwarded port number range. Check with the Internet application documentation for the port number(s) needed.

Enabled Select **Enabled** to enable port triggering for the applications you have defined.

Click **Save Settings** to apply your changes, or click **Cancel Changes** to cancel your changes.

Applications and Gaming > DMZ

The DMZ feature allows one network computer to be exposed to the Internet for use of a special-purpose service such as Internet gaming or videoconferencing. DMZ hosting forwards all the ports at the same time to one PC. The Port Range Forwarding feature is more secure because it only opens the ports you want to have opened, while DMZ hosting opens all the ports of one computer, exposing the computer to the Internet.



Applications and Gaming > DMZ

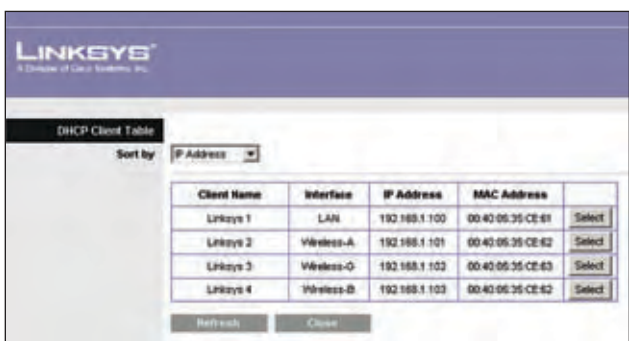
DMZ

Any PC whose port is being forwarded must have its DHCP client function disabled and should have a new static IP address assigned to it because its IP address may change when using the DHCP function.

Enabled/Disabled To disable DMZ hosting, select **Disabled**. To expose one PC, select **Enabled**. Then configure the following settings:

Source IP Address If you want any IP address to be the source, select **Any IP Address**. If you want to specify an IP address or range of IP addresses as the designated source, select and complete the IP address range fields.

Destination If you want to specify the DMZ host by IP address, select **IP Address** and enter the IP address in the field provided. If you want to specify the DMZ host by MAC address, select **MAC Address** and enter the MAC address in the field provided. To retrieve this information, click **DHCP Client Table**.



DMZ > DHCP Client Table

DHCP Client Table

The DHCP Client Table lists computers and other devices that have been assigned IP addresses by the Router. The list can be sorted by Client Name, Interface, IP Address, or MAC Address. To select a DHCP client, click **Select**. To retrieve the most up-to-date information, click **Refresh**. To exit this screen and return to the *DMZ* screen, click **Close**.

Click **Save Settings** to apply your changes, or click **Cancel Changes** to cancel your changes.

Applications and Gaming > QoS

Quality of Service (QoS) ensures better service to high-priority types of network traffic, which may involve demanding, real-time applications, such as videoconferencing.



Applications and Gaming > QoS

QoS (Quality of Service)

Wireless

Wireless QoS If you have other devices on your network that support Wireless QoS, select **Enabled**. Otherwise, keep the default, **Disabled**.

No Acknowledgement If you want to disable the Router's Acknowledgement feature, so the Router will not re-send data if an error occurs, then select **Enabled**. Otherwise, keep the default, **Disabled**.

Internet Access Priority

In this section, you can set the bandwidth priority for a variety of applications and devices. There are four levels priority: High, Medium, Normal, or Low. When you set priority, do not set all applications to High, because this will defeat the purpose of allocating the available bandwidth. If you want to select below normal bandwidth, select Low. Depending on the application, a few attempts may be needed to set the appropriate bandwidth priority.

Enabled/Disabled To use the QoS policies you have set, keep the default, **Enabled**. Otherwise, select **Disabled**.

Category

There are four categories available. Select one of the following: **Applications**, **Online Games**, **MAC Address**, **Ethernet Port**, or **Voice Device**. Proceed to the instructions for your selection.

Applications

Applications Select the appropriate application. If you select Add a New Application, follow the Add a New Application instructions.

Priority Select the appropriate priority: **High**, **Medium**, **Normal**, or **Low**.

Click **Add** to save your changes. Your new entry will appear in the Summary list.

Add a New Application

QoS > Add a New Application

Enter a Name Enter any name to indicate the name of the entry.

Port Range Enter the port range that the application will be using. For example, if you want to allocate bandwidth for FTP, you can enter 21-21. If you need services for an application that uses from 1000 to 1250, you enter 1000-1250 as your settings. You can have up to three ranges to define for this bandwidth allocation. Port numbers can range from 1 to 65535. Check your application's documentation for details on the service ports used.

Select the protocol **TCP** or **UDP**, or select **Both**.

Priority Select the appropriate priority: **High**, **Medium (Recommend)**, **Normal**, or **Low**.

Click **Add** to save your changes. Your new entry will appear in the Summary list.

Online Games

QoS > Online Games

Games Select the appropriate game.

Priority Select the appropriate priority: **High**, **Medium (Recommend)**, **Normal**, or **Low**.

Click **Add** to save your changes. Your new entry will appear in the Summary list.

MAC Address

QoS > MAC Address

Enter a Name Enter a name for your device.

MAC Address Enter the MAC address of your device.

Priority Select the appropriate priority: **High**, **Medium (Recommend)**, **Normal**, or **Low**.

Click **Add** to save your changes. Your new entry will appear in the Summary list.

Ethernet Port

QoS > Ethernet Port

Ethernet Select the appropriate Ethernet port.

Priority Select the appropriate priority: **High**, **Medium (Recommend)**, **Normal**, or **Low**.

Click **Add** to save your changes. Your new entry will appear in the Summary list.

Voice Device

QoS > Voice Device

Enter a Name Enter a name for your voice device.

MAC Address Enter the MAC address of your voice device.

Priority Select the appropriate priority: **High (Recommend)**, **Medium**, **Normal**, or **Low**.

Click **Add** to save your changes. Your new entry will appear in the Summary list.

Summary

This lists the QoS entries you have created for your applications and devices.

Priority This column displays the bandwidth priority of High, Medium, Normal, or Low.

Name This column displays the application, device, or port name.

Information This column displays the port range or MAC address entered for your entry. If a pre-configured application or game was selected, there will be no valid entry shown in this section.

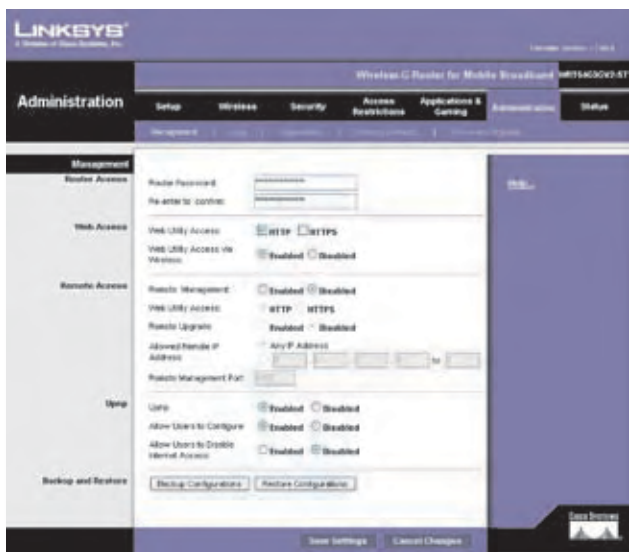
Remove Click this button to remove an entry.

Edit Click this button to make changes.

Click **Save Settings** to apply your changes, or click **Cancel Changes** to cancel your changes.

Administration > Management

The *Administration > Management* screen allows the network's administrator to manage specific Router functions for access and security.



Administration > Management

Management

Router Access

To ensure the Router's security, you will be asked for your password when you access the Router's web-based utility. The default is **admin**.

Router Password Enter a new password for the Router.

Re-enter to confirm Enter the password again to confirm.

Web Access

Web Utility Access HTTP (HyperText Transport Protocol) is the communications protocol used to connect to servers on the World Wide Web. HTTPS uses SSL (Secured Socket Layer) to encrypt data transmitted for higher security. Select **HTTP** or **HTTPS**. **HTTP** is the default.

Web Utility Access via Wireless If you are using the Router in a public domain where you are giving wireless access to your guests, you can disable wireless access to the Router's web-based utility. You will only be able to access the utility via a wired connection if you disable the setting. Keep the default, **Enabled**, to allow wireless access to the utility, or select **Disabled** to block wireless access to the utility.

Remote Access

Remote Management To permit remote access of the Router, from outside the local network, select **Enabled**. Otherwise, keep the default, **Disabled**.

Web Utility Access HTTP (HyperText Transport Protocol) is the communications protocol used to connect to servers on the World Wide Web. HTTPS uses SSL (Secured Socket Layer) to encrypt data transmitted for higher security. Select **HTTP** or **HTTPS**. **HTTP** is the default.

Remote Upgrade If you want to be able to upgrade the Router remotely, from outside the local network, select **Enabled**. (You must have the Remote Management feature enabled as well.) Otherwise, keep the default, **Disabled**.

Allowed Remote IP Address If you want to be able to access the Router from any external IP address, select **Any IP Address**. If you want to specify an external IP address or range of IP addresses, then select the second option and complete the fields provided.

Remote Management Port Enter the port number that will be open to outside access.



NOTE: When you are in a remote location and wish to manage the Router, enter **http://<Internet_IP_address>:port** or **https://<Internet_IP_address>:port**, depending on whether you use HTTP or HTTPS. Enter the Router's specific Internet IP address in place of <Internet_IP_address>, and enter the Remote Management Port number in place of the word port.

UPnP

Universal Plug and Play (UPnP) allows Windows XP or Vista to automatically configure the Router for various Internet applications, such as gaming and videoconferencing.

UPnP If you want to use UPnP, keep the default, **Enabled**. Otherwise, select **Disabled**.

Allow Users to Configure Keep the default, **Enabled**, if you want to be able to make manual changes to the Router while using the UPnP feature. Otherwise, select **Disabled**.

Allow Users to Disable Internet Access Select **Enabled**, if you want to be able to prohibit any and all Internet connections. Otherwise, keep the default, **Disabled**.

Backup and Restore

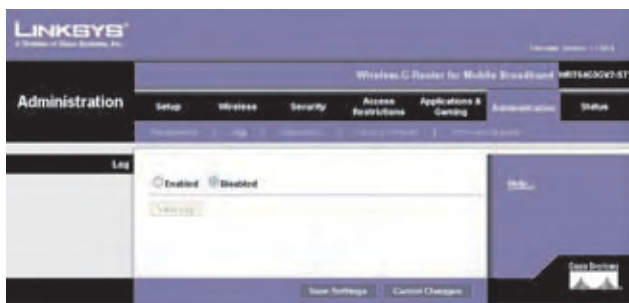
Backup Configurations To back up the Router's configuration settings, click this button and follow the on-screen instructions.

Restore Configurations To restore the Router's configuration settings, click this button and follow the on-screen instructions. (You must have previously backed up the Router's configuration settings.)

Click **Save Settings** to apply your changes, or click **Cancel Changes** to cancel your changes.

Administration > Log

The Router can keep logs of all traffic for your Internet connection.



Administration > Log

Log

Log To disable the Log function, keep the default, **Disabled**. To monitor traffic between the network and the Internet, select **Enabled**. With logging enabled, you can choose to view temporary logs.

View Log To view the logs, click **View Log**.



Log > View Log

Log

- **Type** Select **Incoming Log**, **Outgoing Log**, **Security Log**, or **DHCP Client Log**.
- **<Type> Log** The Incoming Log will display a temporary log of the source IP addresses and destination port numbers for the incoming Internet traffic. The Outgoing Log will display a temporary log of the local IP addresses, destination URLs/IP addresses, and service/port numbers for the outgoing Internet traffic. The Security log will display the login information for the web-based utility. The DHCP Client Log will display the LAN DHCP server status information.

Click **Save the Log** to save this information to a file on your PC's hard drive. Click **Refresh** to update the log. Click **Clear** to clear all the information that is displayed.

Click **Save Settings** to apply your changes, or click **Cancel Changes** to cancel your changes.

Administration > Diagnostics

The diagnostic tests (Ping and Traceroute) allow you to check the connections of your network devices, including connection to the Internet.



Administration > Diagnostics

Diagnostics

Ping Test

The Ping test checks the status of a connection.

IP or URL Address Enter the address of the PC whose connection you wish to test.

Packet Size Enter the packet size you want to use. The default is 32 bytes.

Times to Ping Enter many times you wish to test it.

Start to Ping To run the test, click this button. The *Ping Test* screen will show if the test was successful. Click **Close** to return to the *Diagnostics* screen. Click **Stop** to end the test.



Diagnostics > Ping

Traceroute Test

The Traceroute test tests the performance of a connection.

IP or URL Address Enter the address of the PC whose connection you wish to test.

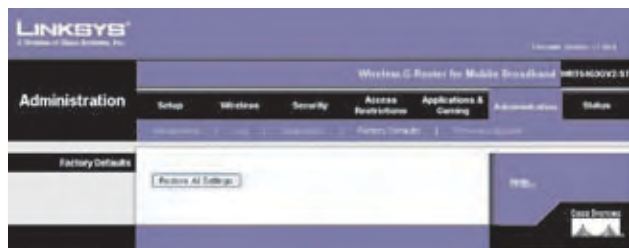
Start to Traceroute To run the test, click this button. The *Traceroute Test* screen will show if the test was successful. Click **Close** to return to the *Diagnostics* screen. Click **Stop** to end the test.



Diagnostics > Traceroute

Administration > Factory Defaults

The *Administration > Factory Defaults* screen allows you to restore the Router's configuration to its factory default settings.



Administration > Factory Defaults



NOTE: Do not restore the factory defaults unless you are having difficulties with the Router and have exhausted all other troubleshooting measures. Once the Router is reset, you will have to re-enter all of your configuration settings.

Factory Defaults

Restore All Settings To reset the Router's settings to the default values, click this button and then follow the on-screen instructions. Any settings you have saved will be lost when the default settings are restored.

Administration > Firmware Upgrade

The *Firmware Upgrade* screen allows you to upgrade the Router's firmware. Do not upgrade the firmware unless you are experiencing problems with the Router or the new firmware has a feature you want to use.



Administration > Firmware Upgrade



NOTE: The Router may lose the settings you have customized. Before you upgrade its firmware, write down all of your custom settings. After you upgrade its firmware, you will have to re-enter all of your configuration settings.

Upgrade Firmware

Before upgrading the firmware, download the Router's firmware upgrade file from the Linksys website, www.linksys.com. Then extract the file.

Please select a file to upgrade the firmware Click **Browse** and select the extracted firmware upgrade file.

Start to Upgrade After you have selected the appropriate file, click this button, and follow the on-screen instructions.

Status > Mobile Network

The *Mobile Network* screen displays the Router's current mobile network and mobile data card or USB adapter status.



Status > Mobile Network

Mobile Network Status

Network Name The name of the mobile network the Router uses is displayed.

Signal Strength The strength of the mobile broadband signal that the Router receives is displayed.

Connection Time The length of time the Router has been connected to the mobile network since your last connection is displayed.

Current Session Usage The amount of data that has been sent to and received from the mobile network since your last connection is displayed.

Data Card Status

Card Model The model number of your mobile data card or USB adapter is displayed.

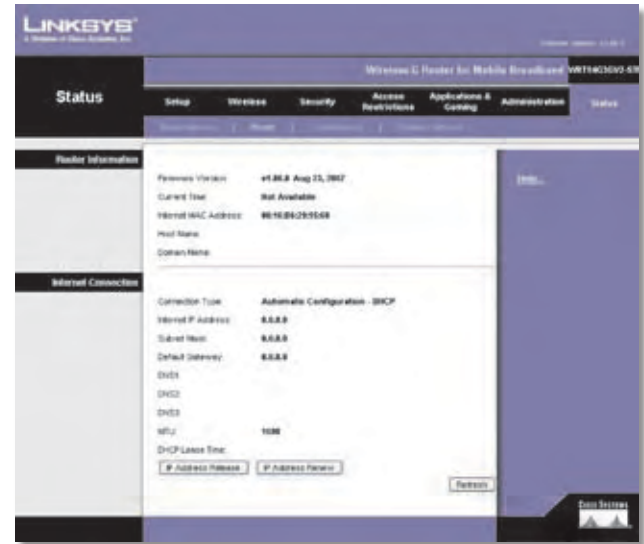
Card Firmware The firmware version of your mobile data card or USB adapter is displayed.

Phone Number The phone number of your mobile broadband account is displayed.

Click **Refresh** to update the on-screen information.

Status > Router

The *Router* screen displays information about the Router and its current settings.



Status > Router

Router Information

Firmware Version The version number of the Router's current firmware is displayed.

Current Time The time set on the Router is displayed.

Internet MAC Address The Router's MAC Address, as seen by your ISP, is displayed.

Host Name If the Router's Host Name was entered on the *Basic Setup* screen, then it is displayed.

Domain Name If the Router's Domain Name was entered on the *Basic Setup* screen, then it is displayed.

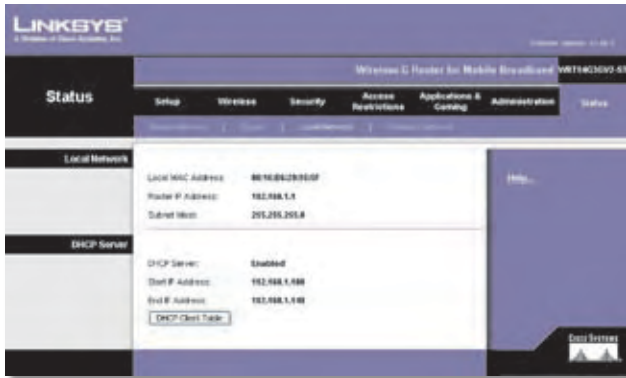
Internet Connection

This section shows the current network information stored in the Router. The information varies depending on the Internet connection type selected on the *Basic Setup* screen.

Click **Refresh** to update the on-screen information.

Status > Local Network

The *Local Network* screen displays information about the local, wired network.



Status > Local Network

Local Network

Local MAC Address The MAC address of the Router's local, wired interface is displayed.

Router IP Address The Router's IP address, as it appears on your local network, is displayed.

Subnet Mask The Subnet Mask of the Router is displayed.

DHCP Server

DHCP Server The status of the Router's DHCP server function is displayed.

Start IP Address For the range of IP addresses used by devices on your local network, the starting IP address is displayed.

End IP Address For the range of IP addresses used by devices on your local network, the ending IP address is displayed.

DHCP Clients Table Click this button to view a list of PCs that are using the Router as a DHCP server.



DHCP Clients Table

DHCP Client Table

The DHCP Client Table lists computers and other devices that have been assigned IP addresses by

the Router. The list can be sorted by Client Name, Interface, IP Address, or MAC Address. To remove a DHCP client, click **Delete**. To retrieve the most up-to-date information, click **Refresh**. To exit this screen and return to the *Local Network* screen, click **Close**.

Status > Wireless Network

The *Wireless Network* screen displays information about your wireless network.



Status > Wireless Network

Wireless Network

MAC Address The MAC address of the Router's local, wireless interface is displayed.

Mode The wireless mode used by the network is displayed.

Network Name (SSID) The name of the wireless network, which is also called the SSID, is displayed.

Standard Channel The channel used by the Router is displayed.

Security The wireless security method used by the Router is displayed.

SSID Broadcast The status of the SSID Broadcast feature is displayed.

Appendix A: Troubleshooting

Your computer cannot connect to the Internet.

Follow the instructions until your computer can connect to the Internet:

- Make sure that the Router is powered on. The Power LED should be green and not flashing.
- If the Power LED is flashing, then power off all of your network devices, including the Router and computers. Then power on each device in the following order:
 1. Router
 2. Computer
- Check the LEDs on the front panel of the Router. Make sure the Power, DSL, and at least one of the numbered LEDs are lit. If they are not, then check the cable connections. The computer should be connected to one of the ports numbered 1-4 on the Router, and the Line port of the Router must be connected to the ADSL line.

When you double-click the web browser, you are prompted for a username and password. If you want to get rid of the prompt, follow these instructions.

Launch the web browser and perform the following steps (these steps are specific to Internet Explorer but are similar for other browsers):

1. Select **Tools > Internet Options**.
2. Click the **Connections** tab.
3. Select **Never dial a connection**.
4. Click **OK**.

You are using a static IP address and cannot connect.

Refer to Windows Help and change your Internet Protocol (TCP/IP) Properties to Obtain an IP address automatically.

The computer cannot connect wirelessly to the network.

Make sure the wireless network name or SSID is the same on both the computer and the Router. If you have enabled wireless security, then make sure the same security method and key are used by both the computer and the Router.

You need to modify the basic settings on the Router.

Run the Setup Wizard on the Setup CD-ROM.

You need to modify the advanced settings on the Router.

Open the web browser (for example, Internet Explorer or Firefox), and enter the Router's IP address in the address field (the default IP address is **192.168.1.1**). When prompted, complete the *User name* and *Password* fields (the default user name and password is **admin**). Click the appropriate tab to change the settings.

How do you connect to the mobile network?

There are three options available.

First Option Using the Front Panel Button

1. Power on the Router with the mobile broadband data card or USB adapter installed.
2. Press the **Mobile Connect/Disconnect** button on the front panel of the Router.
3. The Router will connect to the mobile network via the mobile broadband data card or USB adapter. If this is successful, the Internet Mobile LED on the Router will light up.

Second Option Using the Web-Based Utility

1. Open the web browser.
2. Enter the Router's IP address in the *Address* field (the default IP address is **192.168.1.1**). Press **Enter**.
3. When prompted, complete the *User name* and *Password* fields (the default user name and password is **admin**). Click **OK**.
4. On the first screen you see, the *Basic Setup* screen, click the **Connect** button near the top of the screen.
5. The Router will connect to the mobile network via the mobile broadband data card or USB adapter. If this is successful, the Mobile Connection line will say, "Connected" instead of "Disconnected."

Third Option Using the Auto Connect Feature

The Router's Auto Connect feature enables the Router to automatically connect to the mobile network whenever it is powered on.

1. Open the web browser.
2. Enter the Router's IP address in the *Address* field (the default IP address is **192.168.1.1**). Press **Enter**.
3. When prompted, complete the *User name* and *Password* fields (the default user name and password is **admin**). Click **OK**.

4. On the first screen you see, the *Basic Setup* screen, click the **Mobile Network** tab.
5. On the *Mobile Network* screen, there is an Auto Connect option at the top of the screen. Select **Auto**, and then click **Save Settings**.
6. After the webpage has refreshed, click the **Basic Setup** tab.
7. On the *Basic Setup* screen, click the **Connect** button to connect to the mobile network.
8. The next time the Router is powered on, it will automatically connect to the mobile network.

What do the indicator LEDs signify on the Router?



POWER

Power (Green) The Power LED lights up and stays on while the Router is powered on.



ETHERNET

Ethernet 1-4 (Green) These numbered LEDs, corresponding with the numbered ports on the Router's back panel, serve two purposes. If the LED is continuously lit, the Router is successfully connected to a device through that port. It flashes to indicate network activity over that port.



WIRELESS

Wireless (Green) The Wireless LED lights up when the wireless feature is enabled. It flashes when the Router is actively sending or receiving data over the wireless network.



MODEM

Modem Internet (Green) The Modem LED lights up and stays on when there is a connection made through the Modem port. It flashes to indicate network activity over the Modem port.



MOBILE

Mobile Internet (Blue) The Mobile LED flashes as the Router connects to the mobile network. When the LED stops flashing and stays on, then the connection is active.

If the LED flashes quickly, the Router is not connected to the mobile network. Before you press the Mobile Connect/Disconnect button, make sure the mobile broadband data card or USB adapter is already installed.

How do you know which mobile network you are using?

1. Open the web browser.
2. Enter the Router's IP address in the *Address* field (the default IP address is **192.168.1.1**). Then press **Enter**.
3. When prompted, complete the *User name* and *Password* fields (the default user name and password is **admin**). Click **OK**.
4. Click the **Status** tab.

5. Click the **Mobile Network** tab. In the Mobile Network Status section, on the Network Name line, you will see the name of the network you are currently using.

Whom should you call if there is a question or problem?

For technical support regarding the mobile broadband data card or the Router, contact Sprint. If you have questions about your bill, contact the mobile broadband service provider.



WEB: If your questions are not addressed here, refer to the Sprint website, www.sprint.com

Appendix B: Specifications

Model Number	WRT54G3GV2-ST
Standards	IEEE 802.3, IEEE 802.3u, IEEE 802.11g, IEEE 802.11b
Ports	Internet, Ethernet (4), PC Card, USB 2.0 (3), Power, and Antenna (SMA)
Button	Mobile Connect/Disconnect, Reset
LEDs	Power, Ethernet (1-4), Wireless, Modem Internet, Mobile Internet
Cabling Type	UTP CAT 5
# of Antennas	1
Detachable (Y/N)	Yes
RF Pwr (EIRP) in dBm	802.11g: Typical 14 dBm (± 1.5), 802.11b: Typical 16 dBm (± 1.5)
Antenna Gain in dBi	3.3
UPnP	Able
Security Features	Stateful Packet Inspection (SPI) Firewall, Internet Policy

Environmental

Dimensions	6.69" x 6.69" x 1.30" (170 x 170 x 33 mm)
Weight	12.35 oz (350 g)
Power	External 12V DC, 1.5A
Certification	FCC, IC-03, CE, Wi-Fi (802.11b, 802.11g), WPA
Operating Temp.	32 to 104°F (0 to 40°C)
Storage Temp.	-4 to 140°F (-20 to 60°C)
Operating Humidity	10 to 85%, Relative Humidity, Noncondensing
Storage Humidity	5 to 90% Noncondensing

Appendix C: Warranty Information

Contact your service provider if the warranty support issues are to be handled by them as per your service agreements.

Limited Warranty

Linksys warrants to You that, for a period of one year (the "Warranty Period"), your Linksys Product will be substantially free of defects in materials and workmanship under normal use. Your exclusive remedy and Linksys' entire liability under this warranty will be for Linksys at its option to repair or replace the Product or refund Your purchase price less any rebates. This limited warranty extends only to the original purchaser.

If the Product proves defective during the Warranty Period call **Sprint Technical Support** in order to obtain a Return Authorization Number, if applicable. BE SURE TO HAVE YOUR PROOF OF PURCHASE ON HAND WHEN CALLING. If You are requested to return the Product, mark the Return Authorization Number clearly on the outside of the package and include a copy of your original proof of purchase. RETURN REQUESTS CANNOT BE PROCESSED WITHOUT PROOF OF PURCHASE. You are responsible for shipping defective Products to Sprint. Sprint pays for UPS Ground shipping to You only. Customers located outside of the United States of America and Canada are responsible for all shipping and handling charges.

ALL IMPLIED WARRANTIES AND CONDITIONS OF MERCHANTABILITY OR FITNESS FOR A PARTICULAR PURPOSE ARE LIMITED TO THE DURATION OF THE WARRANTY PERIOD. ALL OTHER EXPRESS OR IMPLIED CONDITIONS, REPRESENTATIONS AND WARRANTIES, INCLUDING ANY IMPLIED WARRANTY OF NON-INFRINGEMENT, ARE DISCLAIMED. Some jurisdictions do not allow limitations on how long an implied warranty lasts, so the above limitation may not apply to You. This warranty gives You specific legal rights, and You may also have other rights which vary by jurisdiction.

This warranty does not apply if the Product (a) has been altered, except by Linksys, (b) has not been installed, operated, repaired, or maintained in accordance with instructions supplied by Linksys, or (c) has been subjected to abnormal physical or electrical stress, misuse, negligence, or accident. In addition, due to the continual development of new techniques for intruding upon and attacking networks, Linksys does not warrant that the Product will be free of vulnerability to intrusion or attack.

TO THE EXTENT NOT PROHIBITED BY LAW, IN NO EVENT WILL LINKSYS BE LIABLE FOR ANY LOST DATA, REVENUE OR PROFIT, OR FOR SPECIAL, INDIRECT, CONSEQUENTIAL, INCIDENTAL OR PUNITIVE DAMAGES, REGARDLESS OF THE THEORY OF LIABILITY (INCLUDING NEGLIGENCE), ARISING OUT OF OR RELATED TO THE USE OF OR INABILITY TO USE THE PRODUCT (INCLUDING ANY SOFTWARE), EVEN IF LINKSYS HAS BEEN ADVISED OF THE POSSIBILITY OF SUCH DAMAGES. IN NO EVENT WILL LINKSYS' LIABILITY EXCEED THE AMOUNT PAID BY YOU FOR THE PRODUCT. The foregoing limitations will apply even if any warranty or remedy provided under this Agreement fails of its essential purpose. Some jurisdictions do not allow the exclusion or limitation of incidental or consequential damages, so the above limitation or exclusion may not apply to You.

Appendix D: Regulatory Information

FCC Statement

This device complies with Part 15 of the FCC Rules. Operation is subject to the following two conditions: (1) This device may not cause harmful interference, and (2) this device must accept any interference received, including interference that may cause undesired operation.

This product has been tested and complies with the specifications for a Class B digital device, pursuant to Part 15 of the FCC Rules. These limits are designed to provide reasonable protection against harmful interference in a residential installation. This equipment generates, uses, and can radiate radio frequency energy and, if not installed and used according to the instructions, may cause harmful interference to radio communications. However, there is no guarantee that interference will not occur in a particular installation. If this equipment does cause harmful interference to radio or television reception, which is found by turning the equipment off and on, the user is encouraged to try to correct the interference by one or more of the following measures:

- Reorient or relocate the receiving antenna
- Increase the separation between the equipment or devices
- Connect the equipment to an outlet other than the receiver's
- Consult a dealer or an experienced radio/TV technician for assistance

FCC Caution: Any changes or modifications not expressly approved by the party responsible for compliance could void the user's authority to operate this equipment.

FCC Radiation Exposure Statement

This equipment complies with FCC radiation exposure limits set forth for an uncontrolled environment. This equipment should be installed and operated with minimum distance 20cm between the radiator and your body.

This transmitter must not be co-located or operating in conjunction with any other antenna or transmitter. IEEE 802.11b or 802.11g operation of this product in the USA is firmware-limited to channels 1 through 11.

Safety Notices

- Caution: To reduce the risk of fire, use only No.26 AWG or larger telecommunication line cord.
- Do not use this product near water, for example, in a wet basement or near a swimming pool.
- Avoid using this product during an electrical storm. There may be a remote risk of electric shock from lightning.



WARNING: This product contains lead, known to the State of California to cause cancer, and birth defects or other reproductive harm. Wash hands after handling.

Industry Canada Statement

This device complies with Industry Canada ICES-003 and RSS210 rules.

Operation is subject to the following two conditions:

1. This device may not cause interference and
2. This device must accept any interference, including interference that may cause undesired operation of the device. This device has been designed to operate with an antenna having a maximum gain of 3.3 dBi. Antenna having a higher gain is strictly prohibited per regulations of Industry Canada. The required antenna impedance is 50 ohms.

To reduce potential radio interference to other users, the antenna type and its gain should be so chosen that the EIRP is not more than required for successful communication.

Industry Canada Radiation Exposure Statement:

This equipment complies with IC radiation exposure limits set forth for an uncontrolled environment. This equipment should be installed and operated with minimum distance 20cm between the radiator & your body.

This transmitter must not be co-located or operating in conjunction with any other antenna or transmitter.

Avis d'Industrie Canada

Cet appareil est conforme aux normes NMB003 et RSS210 d'Industrie Canada.

L'utilisation de ce dispositif est autorisée seulement aux conditions suivantes :

1. il ne doit pas produire de brouillage et
2. il doit accepter tout brouillage radioélectrique reçu, même si ce brouillage est susceptible de compromettre le fonctionnement du dispositif. Le dispositif a été conçu pour fonctionner avec une antenne ayant un gain maximum de 2 dBi. Les règlements d'Industrie Canada interdisent strictement l'utilisation d'antennes dont le gain est supérieur à cette limite. L'impédance requise de l'antenne est de 50 ohms.

Afin de réduire le risque d'interférence aux autres utilisateurs, le type d'antenne et son gain doivent être choisis de façon à ce que la puissance isotrope rayonnée équivalente (p.i.r.e.) ne soit pas supérieure au niveau requis pour obtenir une communication satisfaisante.

Avis d'Industrie Canada concernant l'exposition aux radiofréquences :

Ce matériel est conforme aux limites établies par IC en matière d'exposition aux radiofréquences dans un environnement non contrôlé. Ce matériel doit être installé et utilisé à une distance d'au moins 20 cm entre l'antenne et le corps de l'utilisateur.

L'émetteur ne doit pas être placé près d'une autre antenne ou d'un autre émetteur, ou fonctionner avec une autre antenne ou un autre émetteur.

Wireless Disclaimer

The maximum performance for wireless is derived from IEEE Standard 802.11 specifications. Actual performance can vary, including lower wireless network capacity, data throughput rate, range and coverage. Performance depends on many factors, conditions and variables, including distance from the access point, volume of network traffic, building materials and construction, operating system used, mix of wireless products used, interference and other adverse conditions.

Avis de non-responsabilité concernant les appareils sans fil


Les performances maximales pour les réseaux sans fil sont tirées des spécifications de la norme IEEE 802.11. Les performances réelles peuvent varier, notamment en fonction de la capacité du réseau sans fil, du débit de la transmission de données, de la portée et de la couverture. Les performances dépendent de facteurs, conditions et variables multiples, en particulier de la distance par rapport au point d'accès, du volume du trafic réseau, des matériaux utilisés dans le bâtiment et du type de construction, du système d'exploitation et de la combinaison de produits sans fil utilisés, des interférences et de toute autre condition défavorable.

User Information for Consumer Products Covered by EU Directive 2002/96/EC on Waste Electric and Electronic Equipment (WEEE)


This document contains important information for users with regards to the proper disposal and recycling of Linksys products. Consumers are required to comply with this notice for all electronic products bearing the following symbol:




English - Environmental Information for Customers in the European Union

European Directive 2002/96/EC requires that the equipment bearing this symbol  on the product and/or its packaging must not be disposed of with unsorted municipal waste. The symbol indicates that this product should be disposed of separately from regular household waste streams. It is your responsibility to dispose of this and other electric and electronic equipment via designated collection facilities appointed by the government or local authorities. Correct disposal and recycling will help prevent potential negative consequences to the environment and human health. For more detailed information about the disposal of your old equipment, please contact your local authorities, waste disposal service, or the shop where you purchased the product.


Български (Bulgarian) - Информация относно опазването на околната среда за потребители в Европейския съюз

Европейска директива 2002/96/EC изисква уредите, носещи този символ  върху изделието и/или опаковката му, да не се изхвърлят с несортирани битови отпадъци. Символът обозначава, че изделието трябва да се изхвърля отделно от сметосъбирането на обикновените битови отпадъци. Вашата отговорност е този и другите електрически и електронни уреди да се изхвърлят в предварително определени от държавните или общински органи специализирани пунктове за събиране. Правилното изхвърляне и рециклиране ще спомогнат да се предотвратят евентуални вредни за околната среда и здравето на населението последствия. За по-подробна информация относно изхвърлянето на вашите стари уреди се обърнете към местните власти, службите за сметосъбиране или магазина, от който сте закупили уреда.


Čeština (Czech) - Informace o ochraně životního prostředí pro zákazníky v zemích Evropské unie

Evropská směrnice 2002/96/ES zakazuje, aby zařízení označené tímto symbolem  na produktu anebo na obalu bylo likvidováno s netříděným komunálním odpadem. Tento symbol udává, že daný produkt musí být likvidován odděleně od běžného komunálního odpadu. Odpovídáte za likvidaci tohoto produktu a dalších elektrických a elektronických zařízení prostřednictvím určených sběrných míst stanovených vládou nebo místními úřady. Správná likvidace a recyklace pomáhá předcházet potenciálním negativním dopadům na životní prostředí a lidské zdraví. Podrobnější informace o likvidaci starého vybavení si laskavě vyžádejte od místních úřadů, podniku zabývajícího se likvidací komunálních odpadů nebo obchodu, kde jste produkt zakoupili.


Dansk (Danish) - Miljøinformation for kunder i EU

EU-direktiv 2002/96/EF kræver, at udstyr der bærer dette symbol  på produktet og/eller emballagen ikke må bortskaffes som usorteret kommunalt affald. Symbolet betyder, at dette produkt skal bortskaffes adskilt fra det almindelige husholdningsaffald. Det er dit ansvar at bortskaffe dette og andet elektrisk og elektronisk udstyr via bestemte indsamlingssteder udpeget af staten eller de lokale myndigheder. Korrekt bortskaffelse og genvinding vil hjælpe med til at undgå mulige skader for miljøet og menneskers sundhed. Kontakt venligst de lokale myndigheder, renovationstjenesten eller den butik, hvor du har købt produktet, angående mere detaljeret information om bortskaffelse af dit gamle udstyr.


Deutsch (German) - Umweltinformation für Kunden innerhalb der Europäischen Union

Die Europäische Richtlinie 2002/96/EC verlangt, dass technische Ausrüstung, die direkt am Gerät und/oder an der Verpackung mit diesem Symbol versehen ist , nicht zusammen mit unsortiertem Gemeindeabfall entsorgt werden darf. Das Symbol weist darauf hin, dass das Produkt von regulärem Haushaltsmüll getrennt entsorgt werden sollte. Es liegt in Ihrer Verantwortung, dieses Gerät und andere elektrische und elektronische Geräte über die dafür zuständigen und von der Regierung oder örtlichen Behörden dazu bestimmten Sammelstellen zu entsorgen. Ordnungsgemäßes Entsorgen und Recyceln trägt dazu bei, potentielle negative Folgen für Umwelt und die menschliche Gesundheit zu vermeiden. Wenn Sie weitere Informationen zur Entsorgung Ihrer Altgeräte benötigen, wenden Sie sich bitte an die örtlichen Behörden oder städtischen Entsorgungsdienste oder an den Händler, bei dem Sie das Produkt erworben haben.


Eesti (Estonian) - Keskkonnaalane informatsioon Euroopa Liidus asuvatele klientidele

Euroopa Liidu direktiivi 2002/96/EÜ nõuete kohaselt on seadmeid, millel on tootel või pakendil käesolev sümbol , keelatud kõrvaldada koos sorteerimata olmejäätmetega. See sümbol näitab, et toode tuleks kõrvaldada eraldi tavalistest olmejäätmevoogudest. Olete kohustatud kõrvaldama käesoleva ja ka muud elektri- ja elektroonikaseadmed riigi või kohalike ametiasutuste poolt ette nähtud kogumispunktide kaudu. Seadmete korrektn kõrvaldamine ja ringlussevõtt aitab vältida võimalikke negatiivseid tagajärgi keskkonnale ning inimeste tervisele. Vanade seadmete kõrvaldamise kohta täpsema informatsiooni saamiseks võtke palun ühendust kohalike ametiasutustega, jäätmekäitlusfirmaga või kauplusega, kust te toote ostsite.


Español (Spanish) - Información medioambiental para clientes de la Unión Europea

La Directiva 2002/96/CE de la UE exige que los equipos que lleven este símbolo , en el propio aparato y/o en su embalaje no deben eliminarse junto con otros residuos urbanos no seleccionados. El símbolo indica que el producto en cuestión debe separarse de los residuos domésticos convencionales con vistas a su eliminación. Es responsabilidad suya desechar este y cualesquiera otros aparatos eléctricos y electrónicos a través de los puntos de recogida que ponen a su disposición el gobierno y las autoridades locales. Al desechar y reciclar correctamente estos aparatos estará contribuyendo a evitar posibles consecuencias negativas para el medio ambiente y la salud de las personas. Si desea obtener información más detallada sobre la eliminación segura de su aparato usado, consulte a las autoridades locales, al servicio de recogida y eliminación de residuos de su zona o pregunte en la tienda donde adquirió el producto.


Ελληνικά (Greek) - Στοιχεία περιβαλλοντικής προστασίας για πελάτες εντός της Ευρωπαϊκής Ένωσης

Η Κοινοτική Οδηγία 2002/96/EC απαιτεί ότι ο εξοπλισμός ο οποίος φέρει αυτό το σύμβολο , στο προϊόν και/ή στη συσκευασία του δεν πρέπει να απορρίπτεται μαζί με τα μικτά κοινотικά απορρίμματα. Το σύμβολο υποδεικνύει ότι αυτό το προϊόν θα πρέπει να απορρίπτεται ξεχωριστά από τα συνήθη οικιακά απορρίμματα. Είστε υπεύθυνος για την απόρριψη του παρόντος και άλλου ηλεκτρικού και ηλεκτρονικού εξοπλισμού μέσω των καθορισμένων εγκαταστάσεων συγκέντρωσης απορριμμάτων οι οποίες παρέχονται από το κράτος ή τις αρμόδιες τοπικές αρχές. Η σωστή απόρριψη και ανακύκλωση συμβάλλει στην πρόληψη πιθανών αρνητικών συνεπειών για το περιβάλλον και την υγεία. Για περισσότερες πληροφορίες σχετικά με την απόρριψη του παλιού σας εξοπλισμού, παρακαλώ επικοινωνήστε με τις τοπικές αρχές, τις υπηρεσίες απόρριψης ή το κατάστημα από το οποίο αγοράσατε το προϊόν.


Français (French) - Informations environnementales pour les clients de l'Union européenne

La directive européenne 2002/96/CE exige que l'équipement sur lequel est apposé ce symbole , sur le produit et/ou son emballage ne soit pas jeté avec les autres ordures ménagères. Ce symbole indique que le produit doit être éliminé dans un circuit distinct de celui pour les déchets des ménages. Il est de votre responsabilité de jeter ce matériel ainsi que tout autre matériel électrique ou électronique par les moyens de collecte indiqués par le gouvernement et les pouvoirs publics des collectivités territoriales. L'élimination et le recyclage en bonne et due forme ont pour but de lutter contre l'impact néfaste potentiel de ce type de produits sur l'environnement et la santé publique. Pour plus d'informations sur le mode d'élimination de votre ancien équipement, veuillez prendre contact avec les pouvoirs publics locaux, le service de traitement des déchets, ou l'endroit où vous avez acheté le produit.


Italiano (Italian) - Informazioni relative all'ambiente per i clienti residenti nell'Unione Europea

La direttiva europea 2002/96/EC richiede che le apparecchiature contrassegnate con questo simbolo , sul prodotto e/o sull'imballaggio non siano smaltite insieme ai rifiuti urbani non differenziati. Il simbolo indica che questo prodotto non deve essere smaltito insieme ai normali rifiuti domestici. È responsabilità del proprietario smaltire sia questi prodotti sia le altre apparecchiature elettriche ed elettroniche mediante le specifiche strutture di raccolta indicate dal governo o dagli enti pubblici locali. Il corretto smaltimento ed il riciclaggio aiuteranno a prevenire conseguenze potenzialmente negative per l'ambiente e per la salute dell'essere umano. Per ricevere informazioni più dettagliate circa lo smaltimento delle vecchie apparecchiature in Vostro possesso, Vi invitiamo a contattare gli enti pubblici di competenza, il servizio di smaltimento rifiuti o il negozio nel quale avete acquistato il prodotto.


Latviešu valoda (Latvian) - Ekoloģiska informācija klientiem Eiropas Savienības jurisdikcijā

Direktīvā 2002/96/EK ir prasība, ka aprīkojumu, kam pievienota zīme , uz paša izstrādājuma vai uz tā iesaiņojuma, nedrīkst izmest nešķīrotā veidā kopā ar komunālajiem atkritumiem (tiem, ko rada vietēji iedzīvotāji un uzņēmumi). Šī zīme nozīmē to, ka šī ierīce ir jāizmet atkritumos tā, lai tā nenonāktu kopā ar parastiem mājsaimniecības atkritumiem. Jūsu pienākums ir šo un citas elektriskas un elektroniskas ierīces izmest atkritumos, izmantojot īpašus atkritumu savākšanas veidus un līdzekļus, ko nodrošina valsts un pašvaldību iestādes. Ja izmešana atkritumos un pārstrāde tiek veikta pareizi, tad mazinās iespējamais kaitējums dabai un cilvēku veselībai. Sīkākas ziņas par novecojuša aprīkojuma izmešanu atkritumos jūs varat saņemt vietējā pašvaldībā, atkritumu savākšanas dienestā, kā arī veikalā, kur iegādājāties šo izstrādājumu.


Lietuvškai (Lithuanian) - Aplinkosaugos informacija, skirta Europos Sąjungos vartotojams

Europos direktyva 2002/96/EC numato, kad įrangos, kuri ir  kurios pakuotė yra pažymėta šiuo simboliu (įveskite simbolį), negalima šalinti kartu su nerūšiuotomis komunalinėmis atliekomis. Šis simbolis rodo, kad gaminį reikia šalinti atskirai nuo bendro buitinių atliekų srauto. Jūs privalote užtikrinti, kad ši ir kita elektros ar elektroninė įranga būtų šalinama per tam tikras nacionalinės ar vietinės valdžios nustatytas atliekų rinkimo sistemas. Tinkamai šalinant ir perdirbant atliekas, bus išvengta galimos žalos aplinkai ir žmonių sveikatai. Daugiau informacijos apie jūsų senos įrangos šalinimą gali pateikti vietinės valdžios institucijos, atliekų šalinimo tarnybos arba parduotuvės, kuriose įsigijote tą gaminį.


Malti (Maltese) - Informazzjoni Ambjentali għal Kliġenti fl-Unjoni Ewropea

Id-Direttiva Ewropea 2002/96/KE titlob li t-tagħmir li jkun fi h is-simbolu  fuq il-prodott u/jew fuq l-ippakkjar ma jistax jintrema ma' skart municipali li ma għex isseparat. Is-simbolu jindika li dan il-prodott għandu jintrema separatament minn ma' l-iskart domestiku regolari. Hija responsabbiltà tiegħek li tarmi dan it-tagħmir u kull tagħmir ieħor ta' l-elettriku u elettroniku permezz ta' faċilitajiet ta' għbir appuntati apposta mill-gvern jew mill-awtoritajiet lokali. Ir-rimi b'mod korrett u r-riċiklaġġ jgħin jipprevjeni konsegwenzi negattivi potenzjali għall-ambjent u għas-saħħa tal-bniedem. Għal aktar informazzjoni dettaljata dwar ir-rimi tat-tagħmir antik tiegħek, jekk jogħġbok ikkuntattja lill-awtoritajiet lokali tiegħek, is-servizzi għar-rimi ta' l-iskart, jew il-fanutt minn fejn xtrajt il-prodott.


Magyar (Hungarian) - Környezetvédelmi információ az európai uniós vásárlók számára

A 2002/96/EC számú európai uniós irányelv megkívánja, hogy azokat a termékeket, amelyeken, és/vagy amelyek csomagolásán az alábbi címke  megjelenik, tilos a többi szelektálatlan lakossági hulladékkal együtt kidobni. A címke azt jelöli, hogy az adott termék kidobásakor a szokványos háztartási hulladékészállítás rendszertől elkülönített eljárás kell alkalmazni. Az Ön felelőssége, hogy ezt, és más elektromos és elektronikus berendezéseit a kormányzati vagy a helyi hatóságok által kijelölt gyűjtőredszereken keresztül számolja fel. A megfelelő hulladékfeldolgozás segít a környezetre és az emberi egészségre potenciálisan ártalmas negatív hatások megelőzésében. Ha elavult berendezéseinek felszámolásához további részletes információra van szüksége, kérjük, lépjen kapcsolatba a helyi hatóságokkal, a hulladékfeldolgozási szolgálattal, vagy azzal üzlettel, ahol a terméket vásárolta.


Nederlands (Dutch) - Milieu-informatie voor klanten in de Europese Unie

De Europese Richtlijn 2002/96/EC schrijft voor dat apparatuur die is voorzien van dit symbool  op het product of de verpakking, niet mag worden ingezameld met niet-gescheiden huishoudelijk afval. Dit symbool geeft aan dat het product apart moet worden ingezameld. U bent zelf verantwoordelijk voor de vernietiging van deze en andere elektrische en elektronische apparatuur via de daarvoor door de landelijke of plaatselijke overheid aangewezen inzamelingskanalen. De juiste vernietiging en recycling van deze apparatuur voorkomt mogelijke negatieve gevolgen voor het milieu en de gezondheid. Voor meer informatie over het vernietigen van uw oude apparatuur neemt u contact op met de plaatselijke autoriteiten of afvalverwerkingsdienst, of met de winkel waar u het product hebt aangeschaft.


Norsk (Norwegian) - Miljøinformasjon for kunder i EU

EU-direktiv 2002/96/EF krever at utstyr med følgende symbol  avbildet på produktet og/eller pakningen, ikke må kastes sammen med usortert avfall. Symbolet indikerer at dette produktet skal håndteres atskilt fra ordinær avfallsinnsamling for husholdningsavfall. Det er ditt ansvar å kvitte deg med dette produktet og annet elektrisk og elektronisk avfall via egne innsamlingsordninger slik myndighetene eller kommunene bestemmer. Korrekt avfallshåndtering og gjenvinning vil være med på å forhindre mulige negative konsekvenser for miljø og helse. For nærmere informasjon om håndtering av det kasserte utstyret ditt, kan du ta kontakt med kommunen, en innsamlingsstasjon for avfall eller butikken der du kjøpte produktet.


Polski (Polish) - Informacja dla klientów w Unii Europejskiej o przepisach dotyczących ochrony środowiska

Dyrektywa Europejska 2002/96/EC wymaga, aby sprzęt oznaczony symbolem  znajdującym się na produkcie i/lub jego opakowaniu nie był wyrzucany razem z innymi niesortowanymi odpadami komunalnymi. Symbol ten wskazuje, że produkt nie powinien być usuwany razem ze zwykłymi odpadami z gospodarstw domowych. Na Państwu spoczywa obowiązek wyrzucania tego i innych urządzeń elektrycznych oraz elektronicznych w punktach odbioru wyznaczonych przez władze krajowe lub lokalne. Pozbywanie się sprzętu we właściwy sposób i jego recykling pomogą zapobiec potencjalnie negatywnym konsekwencjom dla środowiska i zdrowia ludzkiego. W celu uzyskania szczegółowych informacji o usuwaniu starego sprzętu, prosimy zwrócić się do lokalnych władz, służb oczyszczania miasta lub sklepu, w którym produkt został nabyty.


Português (Portuguese) - Informação ambiental para clientes da União Europeia

A Directiva Europeia 2002/96/CE exige que o equipamento que exibe este símbolo  no produto e/ou na sua embalagem não seja eliminado junto com os resíduos municipais não separados. O símbolo indica que este produto deve ser eliminado separadamente dos resíduos domésticos regulares. É da sua responsabilidade eliminar este e qualquer outro equipamento eléctrico e electrónico através das instalações de recolha designadas pelas autoridades governamentais ou locais. A eliminação e reciclagem correctas ajudarão a prevenir as consequências negativas para o ambiente e para a saúde humana. Para obter informações mais detalhadas sobre a forma de eliminar o seu equipamento antigo, contacte as autoridades locais, os serviços de eliminação de resíduos ou o estabelecimento comercial onde adquiriu o produto.


Română (Romanian) - Informații de mediu pentru clienții din Uniunea Europeană

Directiva europeană 2002/96/CE impune ca echipamentele care prezintă acest simbol  pe produs și/sau pe ambalajul acestuia să nu fie casate împreună cu gunoiul menajer municipal. Simbolul indică faptul că acest produs trebuie să fie casat separat de gunoiul menajer obișnuit. Este responsabilitatea dvs. să cașiți acest produs și alte echipamente electrice și electronice prin intermediul unităților de colectare special desemnate de guvern sau de autoritățile locale. Casarea și reciclarea corecte vor ajuta la prevenirea potențialelor consecințe negative asupra sănătății mediului și a oamenilor. Pentru mai multe informații detaliate cu privire la casarea acestui echipament vechi, contactați autoritățile locale, serviciul de salubritate sau magazinul de la care ați achiziționat produsul.


Slovenčina (Slovak) - Informácie o ochrane životného prostredia pre zákazníkov v Európskej únii

Podľa európskej smernice 2002/96/ES zariadenie s týmto symbolom  na produkte a/alebo jeho balení nesmie byť likvidované spolu s netriedeným komunálnym odpadom. Symbol znamená, že produkt by sa mal likvidovať oddelene od bežného odpadu z domácností. Je vašou povinnosťou likvidovať toto i ostatné elektrické a elektronické zariadenia prostredníctvom špecializovaných zberných zariadení určených vládou alebo miestnymi orgánmi. Správna likvidácia a recyklácia pomôže zabrániť prípadným negatívnym dopadom na životné prostredie a zdravie ľudí. Ak máte záujem o podrobnejšie informácie o likvidácii starého zariadenia, obráťte sa, prosím, na miestne orgány, organizácie zaoberajúce sa likvidáciou odpadov alebo obchod, v ktorom ste si produkt zakúpili.


Slovenčina (Slovene) - Okoljske informacije za stranke v Evropski uniji

Evropska direktiva 2002/96/EC prepoveduje odlaganje opreme, označene s tem simbolom  – na izdelku in/ali na embalaži – med običajne, nerazvrščene odpadke. Ta simbol opozarja, da je treba izdelek odvreči ločeno od preostalih gospodinjjskih odpadkov. Vaša odgovornost je, da to in preostalo električno in elektronsko opremo odnesete na posebna zbirališča, ki jih določijo državne ustanove ali lokalna uprava. S pravilnim odlaganjem in recikliranjem boste preprečili morebitne škodljive vplive na okolje in zdravje ljudi. Če želite izvedeti več o odlaganju stare opreme, se obrnite na lokalno upravo, odpad ali trgovino, kjer ste izdelek kupili.

Suomi (Finnish) - Ympäristöä koskevia tietoja EU-alueen asiakkaille

EU-direktiivi 2002/96/EY edellyttää, että jos laitteistossa on tämä symboli  itse tuotteessa ja/tai sen pakkauksessa, laitteistoa ei saa hävittää lajittelemattoman yhdyskuntajätteen mukana. Symboli merkitsee sitä, että tämä tuote on hävitettävä erillään tavallisesta kotitalousjätteestä. Sinun vastuullasi on hävittää tämä elektroniikkatuote ja muut vastaavat elektroniikkatuotteet viemällä tuote tai tuotteet viranomaisten määräämään keräyspisteeseen. Laitteiston oikea hävittäminen estää mahdolliset kielteiset vaikutukset ympäristöön ja ihmisten terveyteen. Lisätietoja vanhan laitteiston oikeasta hävitystavasta saa paikallisilta viranomaisilta, jätteenhävityspalvelusta tai siitä myymälästä, josta ostit tuotteen.

Svenska (Swedish) - Miljöinformation för kunder i Europeiska unionen

Det europeiska direktivet 2002/96/EC kräver att utrustning med denna symbol  på produkten och/eller förpackningen inte får kastas med osorterat kommunalt avfall. Symbolen visar att denna produkt bör kastas efter att den avskiljts från vanligt hushållsavfall. Det faller på ditt ansvar att kasta denna och annan elektrisk och elektronisk utrustning på fastställda samlingsplatser utsedda av regeringen eller lokala myndigheter. Korrekt kassering och återvinning skyddar mot eventuella negativa konsekvenser för miljön och personhälsa. För mer detaljerad information om kassering av din gamla utrustning kontaktar du dina lokala myndigheter, avfallshanteringen eller butiken där du köpte produkten.



WEB: For additional information, please visit www.linksys.com

Appendix E: Contact Information

Sprint Online Resource

Visit the Sprint website at www.sprint.com

Sprint Technical Support

Contact Sprint at 1-888-211-4727.



NOTE: Make sure you have the Sprint phone number of your mobile broadband connection card or USB adapter ready before calling.

To get the Sprint phone number, start the Connection Manager, and then click **Menu, Device Info & Diagnostics**.
