

C-120 Mojo Access Point

Quick Start Guide

Package Contents

You should have received the following components in your C-120 package.



C-120

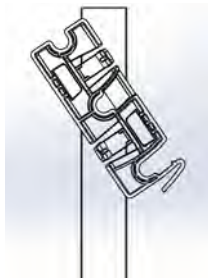


x 3

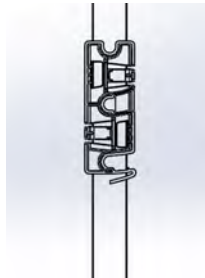


Mounting Bracket

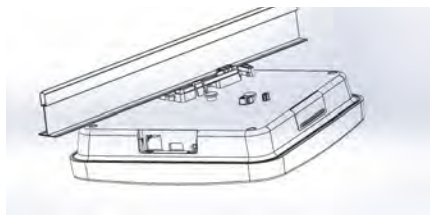
Mounting the C-120



1. Affix bracket to T - Grid



2. Rotate bracket to snap on to T- Grid



3. Place first screw on device on the lower notch on bracket



4. Rotate device on the bracket



5. Ensure all screws on device are snapped in to the grooves on the bracket

Getting the C-120 Online

Step 1: Power up

If using PoE, plug one end of the Ethernet cable into the PoE switch or injector and plug the other end into the Ethernet + PoE port (LAN1) on the C-120. Make sure the PoE source you are using is turned ON.

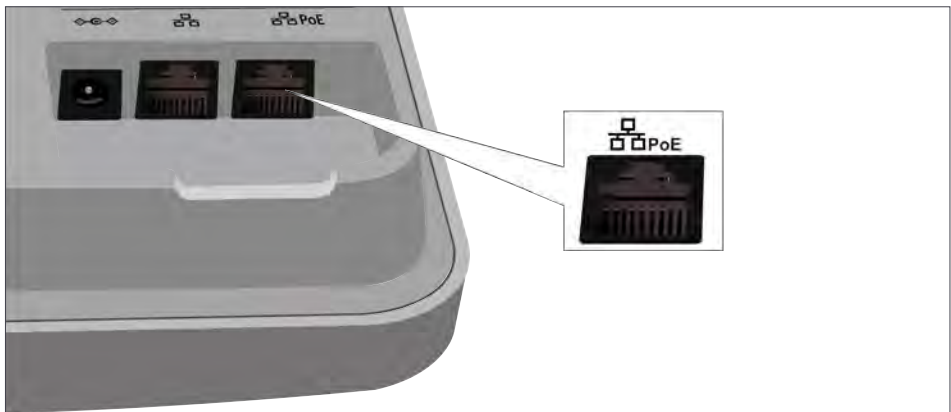
OR

As an alternative to PoE, insert the power adapter plug into an AC power outlet and the other end into the power input port on the C-120.

Warning: If not using PoE, make sure you use only an AC power adapter supported by the C-120 access point (AP).

Step 2: Connect to the network

If you are using PoE, then the C-120 should already be connected to your network. If you are not using PoE, then plug one end of the Ethernet cable into an Ethernet jack on your network and the other end into the Ethernet port (LAN1) on the C-120.



Step 3: Check the LED status

Wait for a few minutes till the LEDs for Power and Ethernet (LAN1) turn solid GREEN, which indicates that the C-120 is online and operational.



Troubleshooting

After the C-120 is powered ON and connected to Ethernet, if the status of LED 1 (Power) remains **Solid Orange**, it indicates that the AP is not able to function normally. The following guidelines may help you to quickly diagnose and fix the problem.

LED Status			What does it mean?
Power	Ethernet (LAN1)	Wi-Fi (2.4/5GHz)	
Solid Orange	Solid Green	Any	No active Ethernet link ¹
Solid Orange	Fast Blink Green	Any	Did not receive a valid IP address via DHCP ²
Solid Orange	Slow Blink Green	Any	Unable to connect to the Mojo Cloud Services or Mojo Server ³
Solid Orange	Solid Orange	Any	Radio interface error ⁴

1. Ensure that the Ethernet cable is plugged into the correct port on the C-120 and the other end of the cable is plugged into an Ethernet jack or port on a switch that is turned ON.
2. If the C-120 did not receive a valid IP address from the DHCP server, ensure that a DHCP server is ON and available on the VLAN/subnet to which the AP is connected. If the AP still fails to get a valid IP address, reboot it once to see if that resolves the problem.
3. If you are using Mojo Cloud Services, make sure that Internet connectivity is available from the VLAN/subnet to which the AP is connected. Check if the required ports for AP and Server communication – UDP 3851 and default HTTP (TCP port 80) – are open on the Firewall. If you are using a Proxy, Web accelerator or URL content filtering, make sure the settings allow communication between the AP and Mojo Cloud Services.
4. This is a rare occurrence and usually indicates a failure of the Wi-Fi radio. Try rebooting the AP once to check if it functions normally.

After following these guidelines, if you are still unable to resolve the problem, contact the local Mojo Networks Sales Engineer or 24/7 Mojo Networks Technical Support.

Tel: +1 (650) 641 0027 Email: support@mojonetworks.com



Mojo Networks, Inc. 339 N. Bernardo Avenue #200, Mountain View, CA 94043

T +1.877.424.7844 T 650.961.1111 F 650.961.1169 www.mojonetworks.com info@mojonetworks.com

© 2016 Mojo Networks, Inc. All rights reserved. Mojo Networks and the Mojo Networks logo are trademarks, and Mojo is a registered trademark of Mojo Networks, Inc. All other trademarks mentioned herein are properties of their respective owners. Specifications are subject to change without notice.

FCC Statement:

Federal Communication Commission Interference Statement

This equipment has been tested and found to comply with the limits for a Class B digital device, pursuant to Part 15 of the FCC Rules. These limits are designed to provide reasonable protection against harmful interference in a residential installation. This equipment generates, uses and can radiate radio frequency energy and, if not installed and used in accordance with the instructions, may cause harmful interference to radio communications. However, there is no guarantee that interference will not occur in a particular installation. If this equipment does cause harmful interference to radio or television reception, which can be determined by turning the equipment off and on, the user is encouraged to try to correct the interference by one of the following measures:

- Reorient or relocate the receiving antenna.
- Increase the separation between the equipment and receiver.
- Connect the equipment into an outlet on a circuit different from that to which the receiver is connected.
- Consult the dealer or an experienced radio/TV technician for help.

FCC Caution: Any changes or modifications not expressly approved by the party responsible for compliance could void the user's authority to operate this equipment.

This device complies with Part 15 of the FCC Rules. Operation is subject to the following two conditions: (1) This device may not cause harmful interference, and (2) this device must accept any interference received, including interference that may cause undesired operation.

For product available in the USA/Canada market, only channel 1-11 can be operated. Selection of other channels is not possible.

This device is restricted for indoor use.

IMPORTANT NOTE:

FCC Radiation Exposure Statement:

This equipment complies with FCC radiation exposure limits set forth for an uncontrolled environment. This equipment should be installed and operated with minimum distance 50 cm between the radiator & your body.



IC Statement:

This device complies with Industry Canada license-exempt RSS standard(s). Operation is subject to the following two conditions: (1) this device may not cause interference, and (2) this device must accept any interference, including interference that may cause undesired operation of the device.

Le présent appareil est conforme aux CNR d'Industrie Canada applicables aux appareils radio exempts de licence. L'exploitation est autorisée aux deux conditions suivantes : (1) l'appareil ne doit pas produire de brouillage, et (2) l'utilisateur de l'appareil doit accepter tout brouillage radioélectrique subi, même si le brouillage est susceptible d'en compromettre le fonctionnement.

For product available in the USA/Canada market, only channel 1-11 can be operated. Selection of other channels is not possible.

Pour les produits disponibles aux États-Unis / Canada du marché, seul le canal 1 à 11 peuvent être exploités. Sélection d'autres canaux n'est pas possible.

Dynamic Frequency Selection (DFS) for devices operating in the bands 5250- 5350 MHz, 5470-5600 MHz and 5650-5725 MHz.

Sélection dynamique de fréquences (DFS) pour les dispositifs fonctionnant dans les bandes 5250-5350 MHz, 5470-5600 MHz et 5650-5725 MHz.

The device for operation in the band 5150–5250 MHz is only for indoor use to reduce the potential for harmful interference to co-channel mobile satellite systems.

les dispositifs fonctionnant dans la bande 5150-5250 MHz sont réservés uniquement pour une utilisation à l'intérieur afin de réduire les risques de brouillage préjudiciable aux systèmes de satellites mobiles utilisant les mêmes canaux.

Users should also be advised that high-power radars are allocated as primary users (i.e. priority users) of the bands 5250-5350 MHz and 5650-5850 MHz and that these radars could cause interference and/or damage to LE-LAN devices.

De plus, les utilisateurs devraient aussi être avisés que les utilisateurs de radars de haute puissance sont désignés utilisateurs principaux (c.-à-d., qu'ils ont la priorité) pour les bandes 5250-5350 MHz et 5650-5850 MHz et que ces radars pourraient causer du brouillage et/ou des dommages aux dispositifs LAN-EL.

For indoor use only.

Pour une utilisation en intérieur uniquement.

IMPORTANT NOTE:

IC Radiation Exposure Statement:

This equipment complies with IC RSS-102 radiation exposure limits set forth for an uncontrolled environment. This equipment should be installed and operated with minimum distance 50 cm between the radiator & your body.

Cet équipement est conforme aux limites d'exposition aux rayonnements IC établies pour un environnement non contrôlé. Cet équipement doit être installé et utilisé avec un minimum de 50 cm de distance entre la source de rayonnement et votre corps.