

### 1 Package Contents

Appreciate you chose Nexiom Travel Router, pls check the accessories before use to ensure full package:

- Nexiom Travel Router
- Quick Installation Guide
- Warranty card

### 2 Features

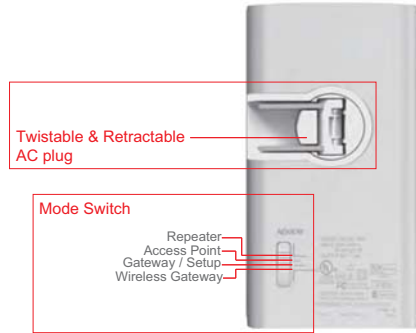
#### 2.1. Top view



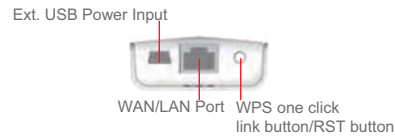
##### 2.1.1 LED indicator Explanation

LED indicator Name	No light	Flickering	Lighting
WiFi	No wireless signal	Wireless signal initial	Wireless signal working
Wan/Lan	No connection	Data transmitting	Well Connect
Power	No power	Router startup	Power good, router work well

#### 2.2. Bottom view



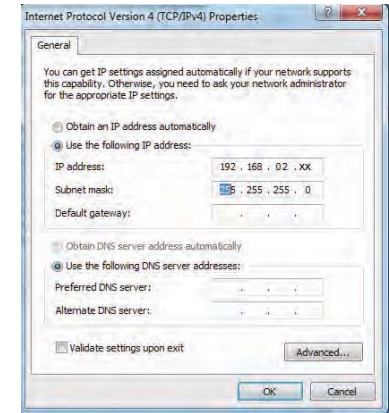
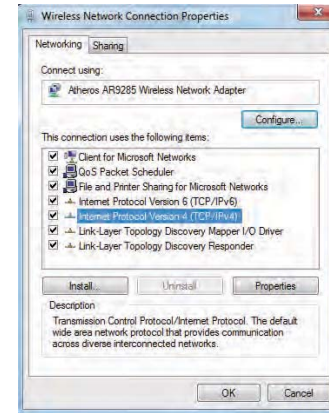
#### 2.3. Rear view



**Note:** You can use Twistable & Retractable AC plug plug-in to power outlet, or use USB power cable via Ext. USB Power Input to connect PC or power adaptor to get power up.

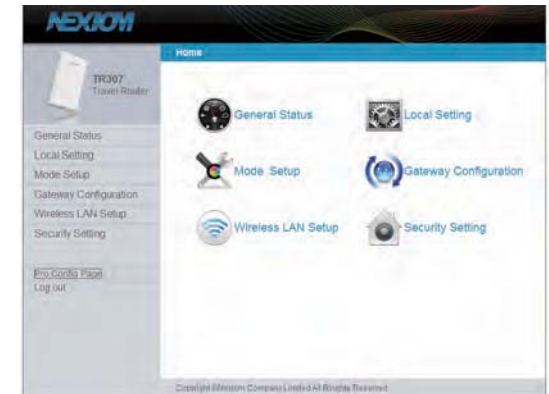
### 3 TCP/IP configuration

IP/ DNS address is available both by automatically or manually set. If choose manually set, pls ensure the mode switch located at "Gateway / Setup" .  
 Operation procedure:Click the Networking icon >> select and click"Open Network and Sharing Center" >> click "Wireless Network Connection Properties">> select "Internet Protocol(TCP/IPv4)" at the regular window interface>> select"Use the following IP address">> IP manual setting parameter" 192.168.2.x"(1<x<255), Subnet mask" 255.255.255.0">> click"OK"



After setting ok, then open Web Browser to cancel the proxy server>>input WEB add "192.168.2.1"then enter. (Nexiom Travel Router Web Configuration Page address: 192.168.2.1, Subnet mask: 255.255.255.0). You need to input the administrator right while first login. Default user name: **admin**, Default password: **admin**, then click "User Login" enter into Nexiom Travel Router web setup page.

**Note:** You can enter the Nexiom Travel Router web setup page only in "Gateway / Setup" mode.



Entering Nexiom Travel Router web setup page, you can manually set your proposed configuration.

## 4 Operation modes - Select by Mode Switch. Each modes setting can be config in Nexiom Travel Router web setup page

### 4.1 Repeater Mode

In the Repeater mode, you can use the Nexiom Travel Router to connect with the authorized WAN SSID to extend your wireless coverage



### 4.2 AP Mode

When in Access Point (AP) mode, the Nexiom Travel Router connects LAN outlet. To let computers and /or devices to access internet via WiFi.



### 4.3 Gateway Mode (Default Setup Mode)

In the Gateway mode, the Nexiom Travel Router connects to the Internet via an ADSL, a cable modem or LAN outlet. To let computers and /or devices to access internet via WiFi with Routing control and Firewall.



### 4.4 Wireless Gateway Mode

Create own WiFi environment via authorized WAN SSID, isolated & protect between inner and outer internet, to keep all the inner wireless internets in a safe isolated area by self-definition.



## 5 Reset

Long press the RESET button 10 seconds when power on, release it after seeing all LED indicator blinking together. The Nexiom Travel Router be Reset to factory default. Unplug (power off) Nexiom Travel Router. Plug in power again to restart the device.



# Nexiom Travel Router

## QUICK INSTALLATION GUIDE



**FCC Caution:** Any changes or modifications not expressly approved by the party responsible for compliance could void the user's authority to operate this equipment.

This device complies with Part 15 of the FCC Rules. Operation is subject to the following two conditions: (1) This device may not cause harmful interference, and (2) this device must accept any interference received, including interference that may cause undesired operation. This device and its antenna(s) must not be co-located or operating in conjunction with any other antenna or transmitter.

15.105(b) :

This equipment has been tested and found to comply with the limits for a Class B digital device, pursuant to part 15 of the FCC rules. These limits are designed to provide reasonable protection against harmful interference in a residential installation. This equipment generates, uses and can radiate radio frequency energy and, if not installed and used in accordance with the instructions, may cause harmful interference to radio communications. However, there is no guarantee that interference will not occur in a particular installation. If this equipment does cause harmful interference to radio or television reception, which can be determined by turning the equipment off and on, the user is encouraged to try to correct the interference by one or more of the following measures:

- Reorient or relocate the receiving antenna.
- Increase the separation between the equipment and receiver.
- Connect the equipment into an outlet on a circuit different from that to which the receiver is connected.
- Consult the dealer or an experienced radio/TV technician for help.

### **FCC Radiation Exposure Statement:**

To satisfy FCC RF exposure requirements for mobile transmitting devices, a separation distance of 20 cm or more should be maintained between the antenna of this device and persons during device operation. To ensure compliance, operations at closer than this distance are not recommended. The antenna used for this transmitter must not be co-located in conjunction with any other antenna or transmitter.