

Netduma R2 Wireless Router Operation Instruction



FCC Caution.

This device complies with part 15 of the FCC Rules. Operation is subject to the following two conditions: (1) This device may not cause harmful interference, and (2) this device must accept any interference received, including interference that may cause undesired operation.

Any Changes or modifications not expressly approved by the party responsible for compliance could void the user's authority to operate the equipment.

Note: This equipment has been tested and found to comply with the limits for a Class B digital device, pursuant to part 15 of the FCC Rules. These limits are designed to provide reasonable protection against harmful interference in a residential installation. This equipment generates uses and can radiate radio frequency energy and, if not installed and used in accordance with the instructions, may cause harmful interference to radio communications. However, there is no guarantee that interference will not occur in a particular installation. If this equipment does cause harmful interference to radio or television reception, which can be determined by turning the equipment off and on, the user is encouraged to try to correct the interference by one or more of the following measures:

- Reorient or relocate the receiving antenna.
- Increase the separation between the equipment and receiver.
- Connect the equipment into an outlet on a circuit different from that to which the receiver is connected.
- Consult the dealer or an experienced radio/TV technician for help.

*RF warning for Mobile device:

This equipment complies with FCC radiation exposure limits set forth for an uncontrolled environment. This equipment should be installed and operated with minimum distance 20cm between the radiator & your body.

FCC ID: 2AR6UR2

1. Device Connection

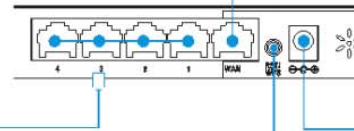
After connection completion, check the router LEDs whether the normal

Guiding lights	Name	Status
SYS	System status light	Blinking
WLAN	Wireless status light	Blinking
WAN	WAN status light	Keeping on bright or blinking
LAN	LAN status light	Keeping on bright or blinking

Ethernet cable

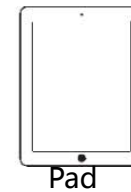
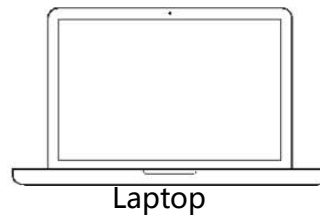
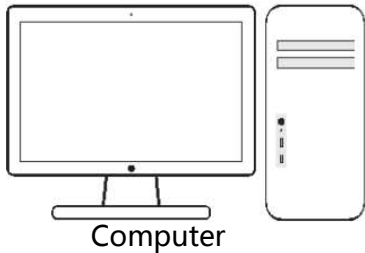
Power outlet

Network port to connect to external networks, it can be connected to XDSL/CABLE MODEM or Residential Broadband



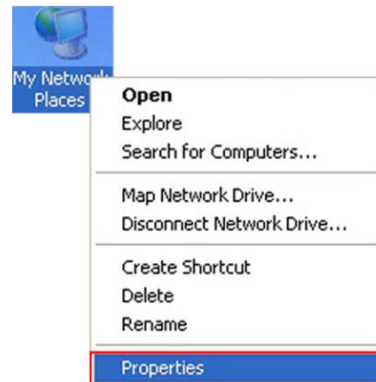
4 Port Switch
Supports four Ethernet
Devices to connect

Short Press: WPS key to connect secure
Press 5S: Reset button, will restore the device to factory settings

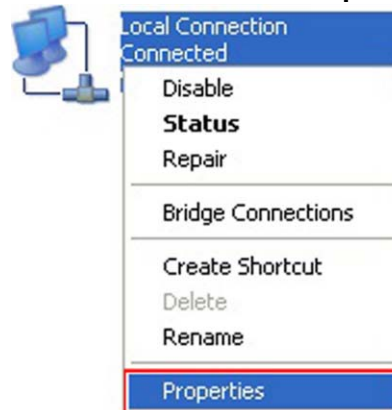


2. Computer Setup(windows XP)

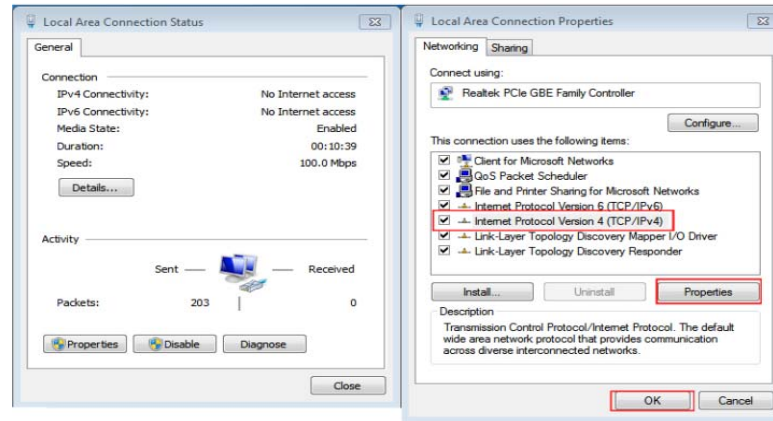
1. Right-click on the network neighborhood icon on the desktop and select properties.



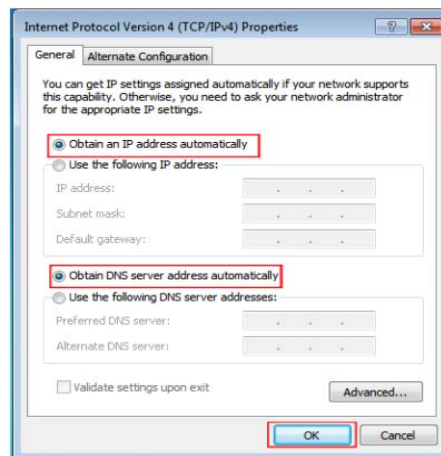
2. Right-click on Local Area Connection icon and select properties.



3. Double-click on internet protocol (TCP/IP).

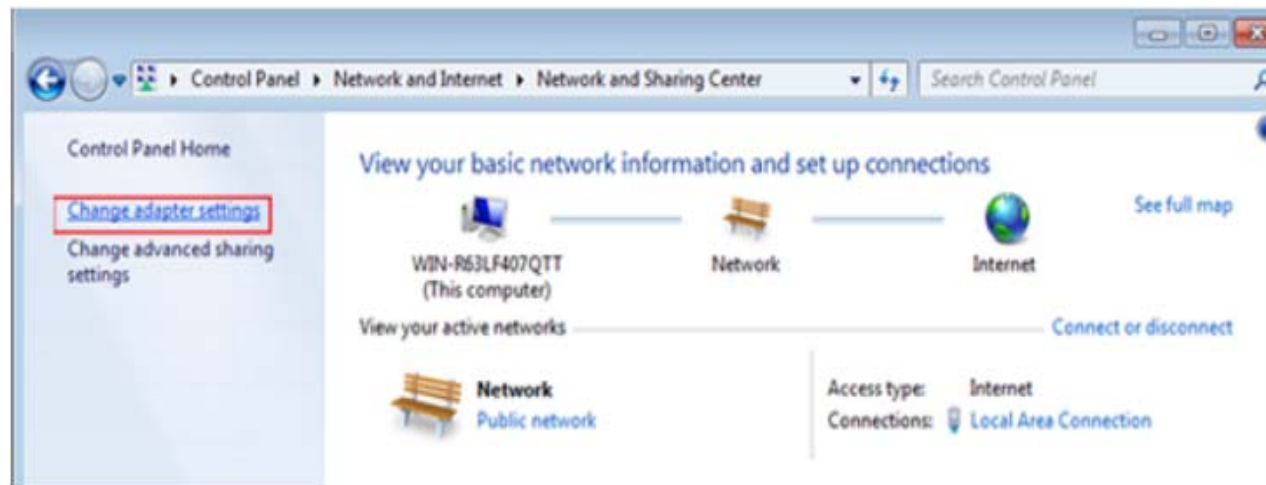


4. Choose "To obtain IP address automatically" and "To obtain DNS server automatically", Click "OK". Get back to previous interface, click "OK".

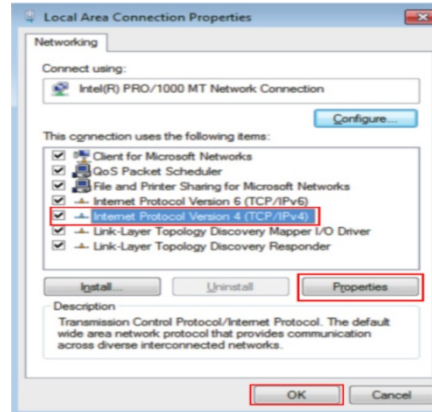


Computer Setup(based on windows 7)

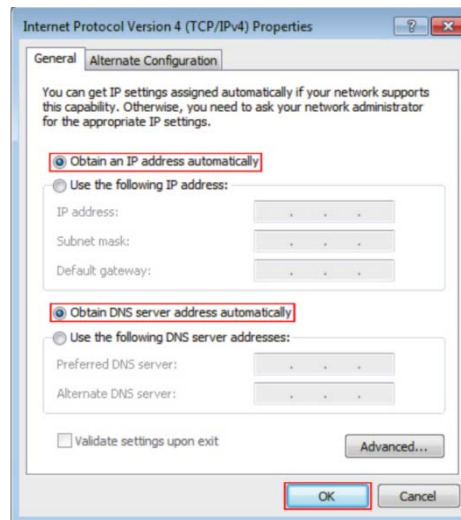
1. Click "Start" , start up "control panel" , click "network" in desk, click "network and sharing center" ,enter "Change adapter settings" , refer to the picture. Right-click "The local connection" , and choose "Properties" .



2. Right-click on Local Area Connection icon and select properties.



3. Choose "To obtain IP address automatically" and "To obtain DNS server automatically" , Click "OK" . Get back to previous interface, click "OK" .



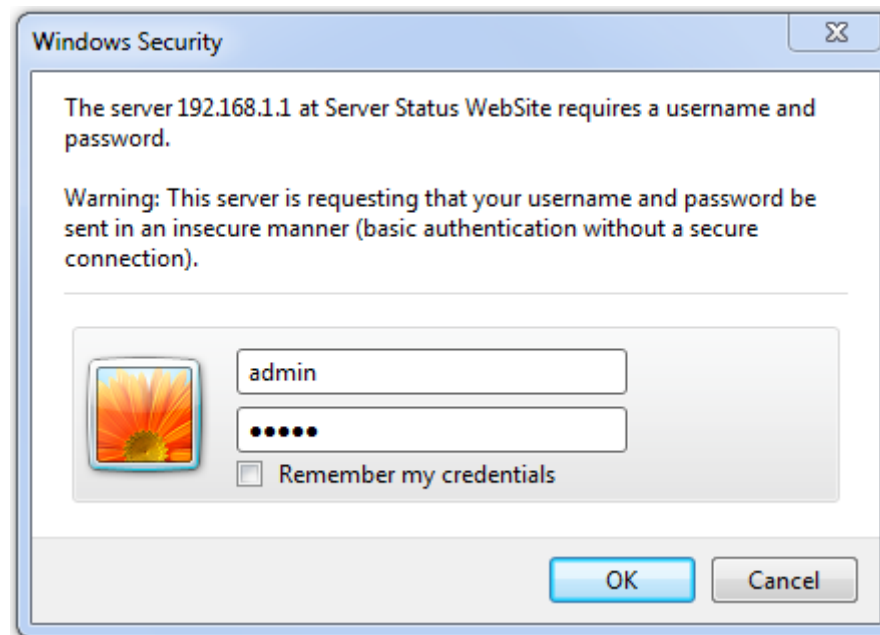
3. Network Settings(Take PPPoE as an example)

4. Please make sure it is connected between the router and computer cables.

4.1 Open web browser presses “enter” in the browser’ s address bar enter “192.168.1.1” .



4.2 Fill in Username and password,then click “OK” (username/password : admin/admin)



4.3 Click "PPPoE" , then "Next" , Fill in username and password , then "Next" .

Configuration Wizard

Advanced

PPPoE

User Name

Password

Display Password

NETWORK TYPE SSID SETTING COMPLETE

Back Next

4.4 Set 2.4G/5.8G SSID and password , then "Next" .

Configuration Wizard Advanced

SSID Setting

2.4G SSID	<input type="text" value="LTE-2.4G"/>
5.8G SSID	<input type="text" value="LTE-5G"/>
Password	<input type="text" value="12345678"/>

NETWORK TYPE SSID SETTING COMPLETE

Back Next

4.5 After the setup is complete, Click "Complete" reboot router to configure.

