

User Manual

Product name: Mini BHS ADSL2+

Model: TA04G-TF1

1. PRODUCT OVERVIEW

1.1 Introduction

TA04G-TF1 connects to computer by two Ethernet Ports, either by Wireless.

It is an ideal device for broadband wireless access.

TA04G-TF1 supports IEEE 802.11b/g/n, with 300Mbps PHY rate supporting. In security, it supports all-ser of the Wireless Transfers Encrypt Protocol.

It has high performance, standard-based and existence together with general line. It is the best choice of telecommuting、 mini-type office and family. It can carry out VOD, ftp, downloading files more quickly than traditional MODEM. Moreover, low cost which it brings also is that we are glad to see.

It supports upload transmission speed up to 1Mbps and download speed up to 8 Mbps (24Mbps for ADSL2+). The setting of the ADSL2/2+ is flexible and convenient.

In function, TA04G-TF1 supported 8 PVCs; powerful router function; Diagnosis Function; Multicast Function; PPPoE Function; Real-time listening the status of the network connection; Monitor software.

In manipulation, TA04G-TF1 provides one convenient, friendly configuration UI;

In software maintenance, TA04G-TF1 may remote upgrade and remote management;

In compatibility, TA04G-TF1 is compatible to popular DSLAM absolutely.

1.2 Product Key Feature

1. Support IEEE 802.11b/g/n, with 300Mbps PHY rate supporting.
2. Support ANSI T1.413 Issue 2; ITU G.992.1 (G.dmt) Annex A,B,C; ITU G.992.2 (G.lite); ITU G.992.3 ADSL2 (G.dmt.bis); ITU G.992.4 ADSL (G.lite.bis); ITU G.992.5 ADSL2+; Extended Reach(READSL2),
3. TA04G-TF1 is not only a powerful ADSL modem, but a strong local network router with features of DHCP, DNS and NAT.
4. Downstream up to 8M for ADSL, 24 Mbps for ADSL2+; Upstream up to 1Mbps
5. Routing from WAN to LAN
6. Basic Gateway features such as NAT, DHCP, and DNS. Etc, to provide the capability







to construct private network.

7. Firewall
8. IP filter, IP forwarding, IPQos
9. Web-based GUI
10. Support 8 PVCs
11. ATM management features
12. Parent Control

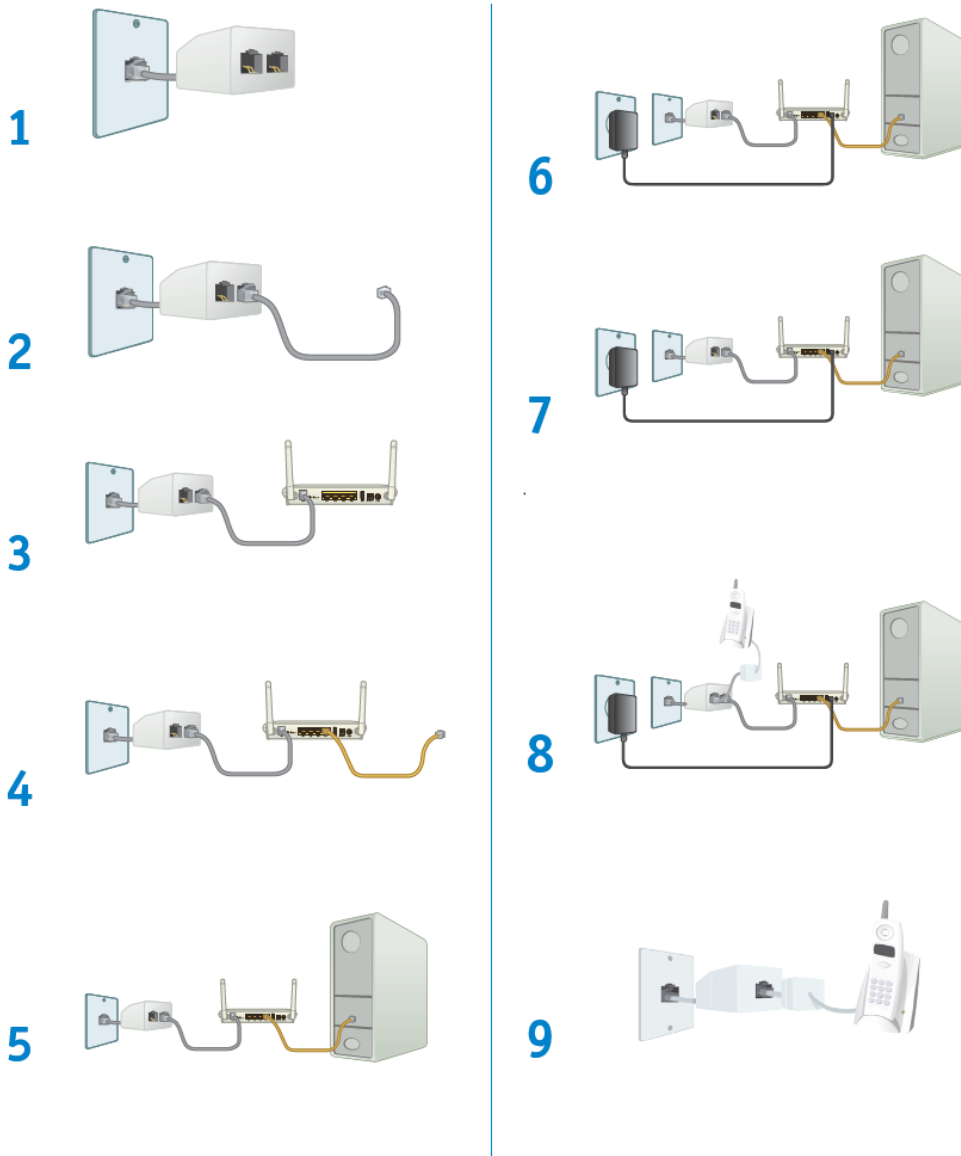
2 Products instructions



2.1 equipment supplied

- 1 simple microfilter 
- 1 combined microfilter 
- 1 RJ45 cable 
- 1 RJ11 cable 
- 1 Modem 
- 1 Adapter 

2.2 Quick Installation Guide



3. Power Requirements:

TA04G-TF1 uses an AC adaptor that can supply DC voltages.

AC power adaptor: 100VAC-240VAC(50HZ/60HZ)

DC voltage: 12V, 500mA

TA04G-TF1 complies with the following standards:

temperature :- 0 to +45 degrees C (Operating)

-4 to °F 149°F (-20°C to 70°C) (Store status)

Humidity:- 10% to 90% (Operating)- 5% to 95% (store status)

4. Useful Numbers :

In case of doubts, difficulties in installation, connection or navigation call Customer Service: 103 15.

People with speech / hearing impaired access by 142.

To facilitate compliance, we recommend that you be at your computer Now you can take full advantage of everything your Live Internet offers fixed.

For more information and service agreement, visit www.vivo.com.br.

5. FCC INFORMATION

This equipment complies with CFR 47, Part 15.19 of the FCC rules. Operation of the equipment is subject to the following conditions: (1) this device may not cause harmful interference, and (2) this device must accept any interference received; including interference that may cause undesired operation.

THIS DEVICE MUST NOT BE CO-LOCATED OR OPERATING IN CONJUNCTION WITH ANY OTHER ANTENNA OR TRANSMITTER

NOTE: THE MANUFACTURER IS NOT RESPONSIBLE FOR ANY RADIO OR TV INTERFERENCE CAUSED BY UNAUTHORIZED MODIFICATIONS TO THIS EQUIPMENT. SUCH MODIFICATIONS COULD VOID THE USER'S AUTHORITY TO OPERATE THE EQUIPMENT.

Federal Communications Commission (FCC) Requirements, Part 15

This equipment has been tested and found to comply with the limits for a class B digital device, pursuant to part 15 of the FCC

Rules. These limits are designed to provide reasonable protection against harmful interference in a residential installation.

This equipment generates, uses and can radiate radio frequency energy and, if not installed and used in accordance with the

instructions, may cause harmful interference to radio communications. However, there is no guarantee that interference will not

occur in a particular installation. If this equipment does cause harmful interference to radio or television reception, which can be

determined by turning the equipment off and on, the user is encouraged to try to correct the interference by one or more of the

following measures:

---Reorient or relocate the receiving antenna.

---Increase the separation between the equipment and receiver.

---Connect the equipment into an outlet on a circuit different from that to which the receiver is connected.

---Consult the dealer or an experienced radio/TV technician for help.

REGULATORY INFORMATION / DISCLAIMERS

Installation and use of this Wireless LAN device must be in strict accordance with the instructions included in the user

documentation provided with the product. Any changes or modifications (including the antennas) made to this device that are not

expressly approved by the manufacturer may void the user's authority to operate the equipment. The manufacturer is not

responsible for any radio or television interference caused by unauthorized modification of this device, or the substitution of the

connecting cables and equipment other than manufacturer specified. It is the responsibility of the user to correct any interference

caused by such unauthorized modification, substitution or attachment. Manufacturer and its authorized resellers or distributors will

assume no liability for any damage or violation of government

CAUTION: To maintain compliance with FCC's RF exposure guidelines, this equipment should be installed and operated with

minimum distance 20cm between the radiator and your body. Use on the supplied antenna.

Unauthorized antenna, modification, or

attachments could damage the transmitter and may violate FCC regulations.

MPE Statement (Safety Information)

Your device contains a low power transmitter. When device is transmitted it sends out Radio Frequency (RF) signal.

SAFETY INFORMATION

In order to maintain compliance with the FCC RF exposure guidelines, this equipment should be installed and operated with

minimum distance 20cm between the radiator and your body. Use only with supplied antenna.

Unauthorized antenna, modification,

or attachments could damage the transmitter and may violate FCC regulations.