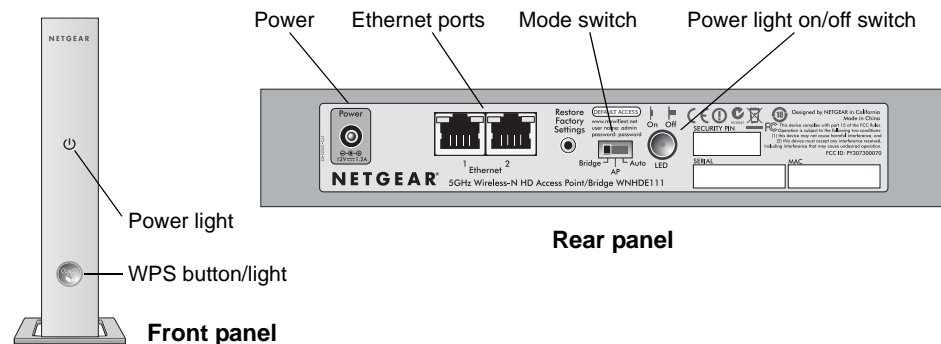


WNHDE111 5GHz Wireless-N HD Access Point/Bridge & WNHDE111 HD/Gaming 5GHz Wireless-N Networking Kit

Start Here

This guide describes installation for the WNHDE111 5GHz Wireless-N HD Access Point/Bridge or the WNHDE111 HD/Gaming 5GHz Wireless-N Networking Kit.

1. Familiarize yourself with the features of the Wireless-N Bridge.



The mode switch can be set to:

- **Auto.** In Auto mode, the Wireless-N Bridge will automatically sense and set its own mode. It will run in AP mode if connected to a router or gateway. Otherwise, if connected to any other wired device(s), it will run in Bridge mode. (The Wireless-N Bridge is set to Auto mode from the factory.)
 - **AP.** In AP (access point) mode, the Wireless-N Bridge will act as an access point. In this mode, the Wireless-N Bridge should be connected to a router.
 - **Bridge.** In Bridge mode, the Wireless-N Bridge is connected to your other wired device(s) and will connect wirelessly to the Wireless-N Bridge being used as an access point.
2. Verify that:
 - You have Broadband Internet access through a powered-on router or gateway.

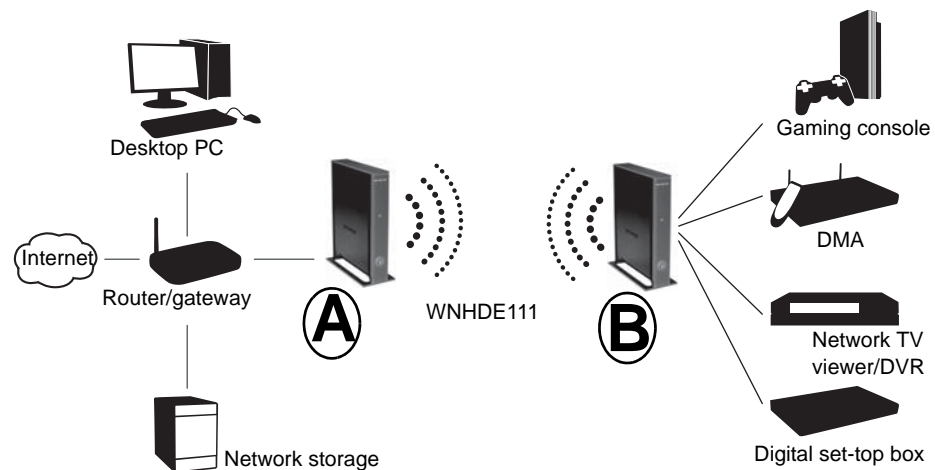
- You are connecting Ethernet-enabled devices, such as a network-enabled game console (an Xbox 360 or Sony PS3), a digital media player (an Apple TV or NETGEAR Digital Entertainer), an IPTV set-top box, or a laptop with an embedded Wireless-N adapter.

Setting Up the WNHDE111 HD/Gaming 5GHz Wireless-N Networking Kit For Gaming or Digital Media

1. Set the switch on the back of each Wireless-N Bridge to Auto mode.

Caution: Do *not* plug in the power adapter before step 2.

2. Connect the Ethernet cable from a LAN port in the router or gateway (A) to either LAN port on one Wireless-N Bridge.
3. Place the other Wireless-N Bridge near the media player, game console, or set-top box (B), and connect it with an Ethernet cable.

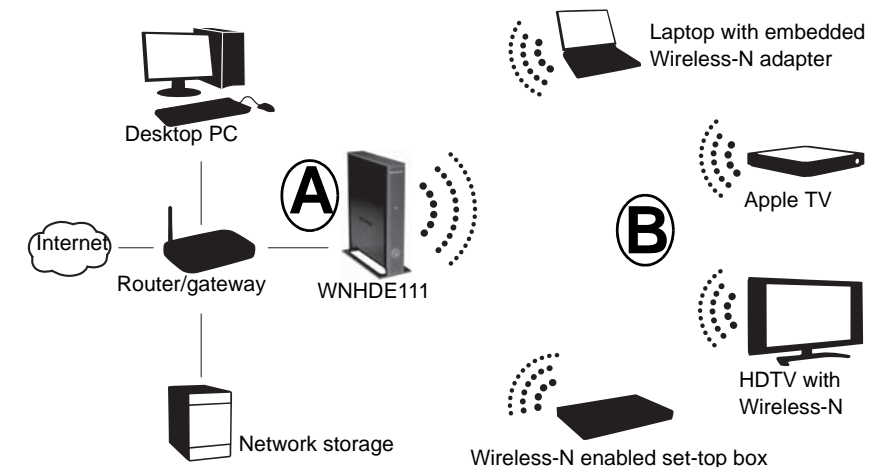


4. To complete installation, connect a power adapter to the Wireless-N Bridge(s). Allow a few minutes for your devices to connect to the Internet. If you are not connected, see “Troubleshooting” on page 2.

Note: By following the steps in this installation with both Wireless-N Bridge units set to Auto mode, the Wireless-N Bridge connected to your router has set itself to AP mode, while the second Wireless-N Bridge is set to Bridge mode.

Setting Up One WNHDE111 5GHz Wireless-N HD Access Point/Bridge

1. Set the switch on the back of the Wireless-N Bridge to Auto mode (it will set itself to AP mode).
2. Connect the Ethernet cable from a LAN port on the router or gateway (A) to either LAN port on the Wireless-N Bridge.
3. Place your computer or other device (B) within range of the Wireless-N Bridge in AP mode.



4. Connect a power adapter to the Wireless-N Bridge.
5. Connect your wireless clients by one of the following methods:
 - In your client’s adapter configuration settings, to use the default WPA-PSK/WPA2-PSK security settings, enter the SSID as **NETGEAR-HD**, and the **passphrase** that is printed on the *Resource CD*.
 - If your wireless device has a WPS push-button, connect it to the Wireless-N Bridge in AP mode, similar to steps 3-5 in “To Add Another Wireless-N Bridge to a System with a Wireless-N Bridge in AP Mode” on page 1.

To Add Another Wireless-N Bridge to a System with a Wireless-N Bridge in AP Mode

1. Make sure the WNHDE111 5GHz Wireless-N HD Access Point/Bridge you are adding is *not* set to AP mode, place it near the devices that will work with it.
2. Connect a power adapter to the new Wireless-N Bridge.

The power light should blink quickly in groups of 3 (if the power light is off, press the power light on/off switch on the back panel to turn it on).

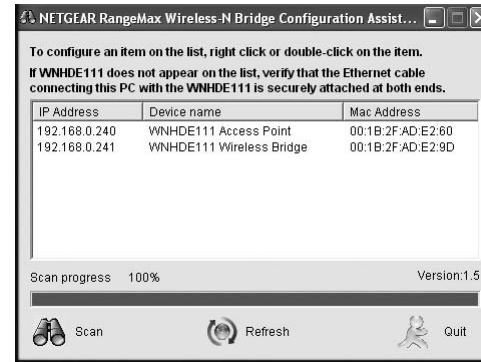
- On the new Wireless-N Bridge, press the WPS button for 10 seconds (located on the front panel). Its WPS light should start to blink.
- Within 2 minutes, press the WPS button on the Wireless-N Bridge in AP mode. Its WPS light should start to blink.
- After 1-2 minutes the new Wireless-N Bridge in Bridge mode should be associated with the Wireless-N Bridge in AP mode. The WPS light for the Bridge mode unit will turn off. On the AP mode unit, the WPS light will be on solid for about 6 minutes, then turn off. The power lights on both units will be steadily on.

Configuring With the Smart Wizard

Use the NETGEAR Smart Wizard Configuration Assistant to change the IP address type (static or dynamic), set the wireless network SSID, set up wireless security, or view device status. By default, the IP address is assigned dynamically by the router. Without a router, the IP address of the Wireless-N Bridge in AP mode will default to **192.168.0.240** and the IP address of the Wireless-N Bridge in bridge mode will default to **192.168.0.241**. Configuring the Wireless-N Bridge to use a fixed or dynamic IP address lets you access the Wireless-N Bridge configuration from the Smart Wizard Configuration Assistant or a Web browser.

- Do one of the following:
 - Connect via a wireless connection to the Wireless-N Bridge as described in “Setting Up One WNHDE111 5GHz Wireless-N HD Access Point/Bridge” on page 1.
 - Connect an Ethernet cable from your PC to an Ethernet port on the Wireless-N Bridge that is in AP mode.
- Insert the *Resource CD* in your CD-ROM drive. If the program does not start automatically, double-click **autorun.exe**.
- Select **Run the Configuration Assistant**.

Note: If the IP address of the PC that is running the Configuration Assistant does not match the IP network, the Configuration Assistant prompts you to change the IP address first. NETGEAR recommends that you change the IP address for the PC to match the IP network of the Wireless-N Bridge.



The Configuration Assistant scans your LAN, and then shows all the Wireless-N Bridges on it, and whether they are in AP (access point) or Bridge mode.

- To configure a Wireless-N Bridge on the list, double-click it. This transfers you to the Web GUI of that Wireless-N Bridge.
- Enter **password** at the prompt to log in.

For more information on configuring, refer to the *WNHDE111 RangeMax Next Wireless-N HD Bridge Reference Manual*. The CD provides a link to this manual or you can download it from <http://netgear.com/support>.

Troubleshooting

If you have trouble setting up your WNHDE111 5GHz Wireless-N HD Access Point/Bridges, check the tips below.

The Power light blinks quickly in groups of three. The Wireless-N Bridge in Bridge mode is not connected to the Wireless-N Bridge in AP mode. See “To Add Another Wireless-N Bridge to a System with a Wireless-N Bridge in AP Mode” on page 1.

The Power light blinks slowly (once every second). The firmware is corrupted. See the *WNHDE111 RangeMax Next Wireless-N HD Bridge Reference Manual* for emergency recovery instructions.

The Smart Wizard Configuration Assistant does not find either Wireless-N Bridge unit. Make sure the Ethernet cable is securely connected from the PC to an Ethernet port on the AP mode unit. If the Smart Wizard does not find the Bridge mode unit, make sure the power light on the Bridge mode unit is not blinking in groups of three.

You cannot connect to the Internet. You did not specify the correct Wireless-N Bridge IP address, or there could be a system problem.

- Make sure that the Wireless-N Bridge in AP mode is connected to a router or gateway through an Ethernet cable.
- Make sure that both the Wireless-N Bridge in AP mode and the Wireless-N Bridge in Bridge mode show correct IP addresses within the router network.

Technical Support

Thank you for selecting NETGEAR products.

Register your product at <http://www.NETGEAR.com/register>. Registration on the website or over the phone is required before you can use our telephone support service. The phone numbers for worldwide regional customer support centers are on the Warranty and Support Information card that came with your product.

Go to <http://netgear.com/support> for product updates and Web support.



Attention: When you configure the wireless settings of this device, please make sure to select the correct country settings. Due to EU law, the country settings must be identical to the country where the device is operating.



This symbol was placed in accordance with the European Union Directive 2002/96 on the Waste Electrical and Electronic Equipment (the WEEE Directive). If disposed of within the European Union, this product should be treated and recycled in accordance with the laws of your jurisdiction implementing the WEEE Directive.

© 2007 by NETGEAR, Inc. All rights reserved. NETGEAR and the NETGEAR logo are registered trademarks of NETGEAR, Inc. in the United States and/or other countries. Other brand and product names are trademarks or registered trademarks of their respective holders. Information is subject to change without notice.



201-11143-01

October 2007

FCC Statement

This equipment has been tested and found to comply with the limits for a Class B digital device, pursuant to Part 15 of the FCC Rules. These limits are designed to provide reasonable protection against harmful interference in a residential installation.

This equipment generates uses and can radiate radio frequency energy and, if not installed and used in accordance with the instructions, may cause harmful interference to radio communications. However, there is no guarantee that interference will not occur in a particular installation determined by turning the equipment off and on, the user is encouraged to try to correct the interference by one of the following measure:

Reorient or relocate the receiving antenna.
Increase the separation between the equipment and receiver.
Connect the equipment into an outlet on a circuit different from that to which the receiver is connected.

Consult the dealer or an experienced radio/ TV technician for help.

To assure continued compliance, any changes or modifications not expressly approved by the party responsible for

compliance could void the user's authority to operate this equipment. (Example- use only shielded interface cables when connecting to computer or peripheral device.)

FCC Radiation Exposure Statement

This equipment complies with FCC RF radiation exposure limits set forth for an uncontrolled environment. This equipment should be installed and operated with a minimum distance of 20 cm between the radiator and your body.

This device complies with Part 15 of the FCC Rules. Operation is subject to the following two conditions:

- 1) this device may not cause harmful interference, and
- 2) this device must accept any interference received, including interference that may cause undesired operation.

This transmitter must not be co-located or operating in conjunction with any other antenna or transmitter.

The antennas used for this transmitter must be installed to provide a separation distance for at least 20 cm from all persons and must not be co-located or operating in conjunction with any other antenna or transmitter.

This equipment marketed in USA is restricted by firmware to only operate on 5G.