

USB Wireless Adaptor User Manual

一、 Network Card Installation

Please follow the following steps to install your new wireless network card:

1. Insert the USB wireless network card into an empty USB2.0 port of your computer when computer has power on. Never use force to insert the card, if you feel it's stuck, flip the card over and try again.
2. Insert device driver CD into the CDROM drive of your computer, double click the 'Setup.exe' icon and run the 'Setup.exe' program.

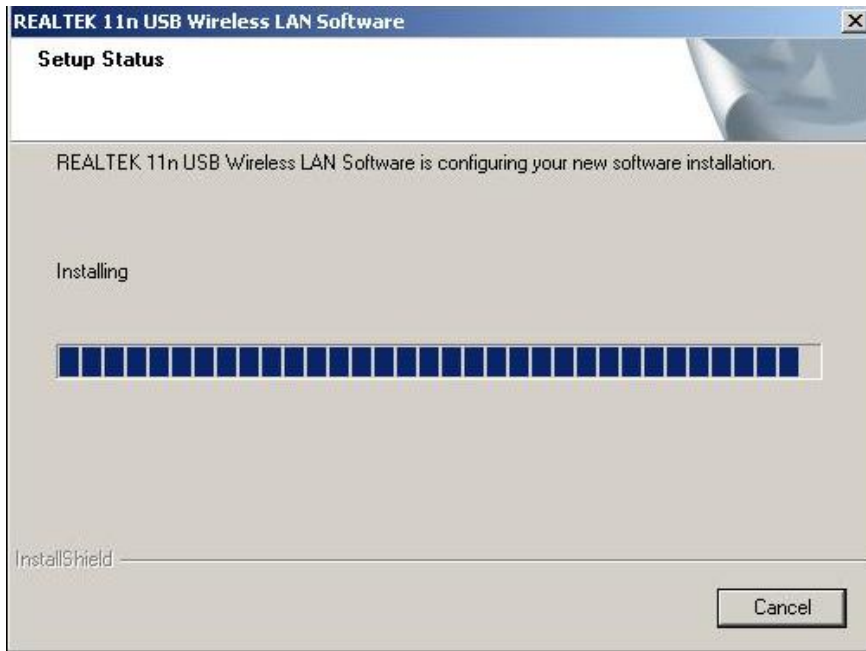


Setup.exe

3. Then pop up the installshield Wizard.



4. Click 'Next'.



5. Please wait while the installation procedure is running. Finally, click 'Finish' and restart your computer to finish the driver installation.

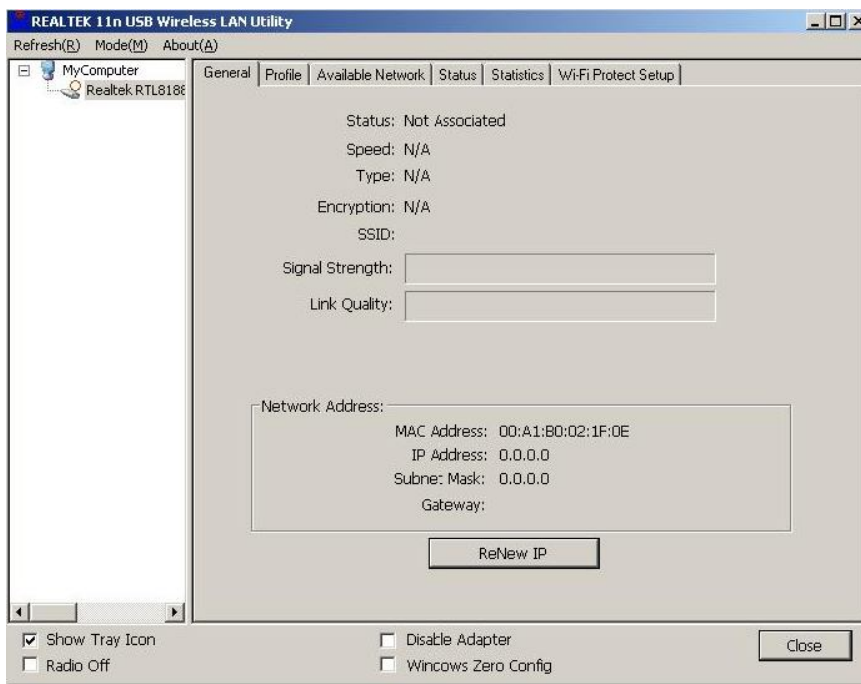


二、 Connect to Wireless Access Point

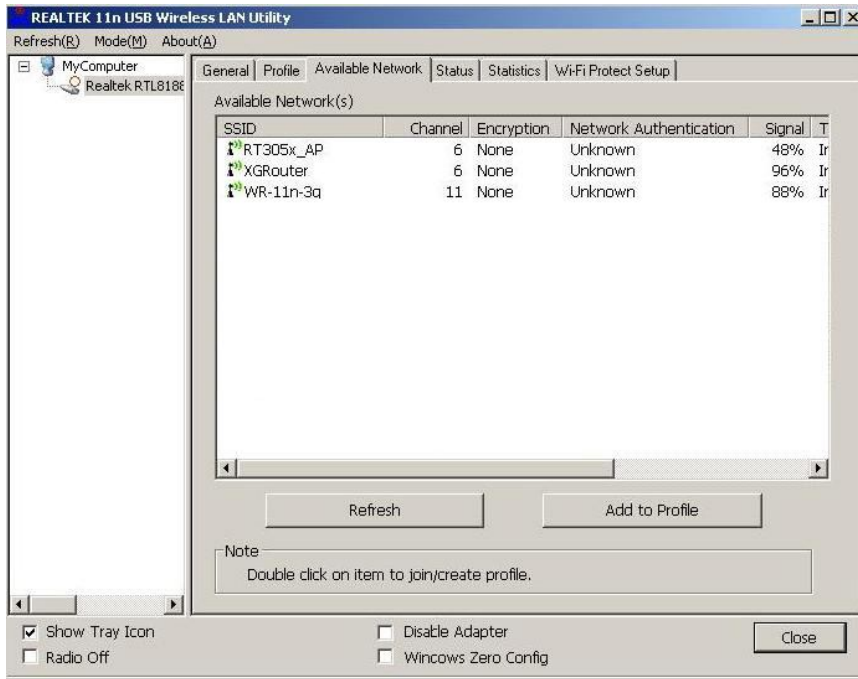
1. After installation has finished, wireless configuration utility will be shown on the desktop of your computer, and it will try to connect to any unencrypted wireless access point automatically. If you want to connect to a specific wireless access point, or the access point you wish to connect uses encryption, you have to configure the wireless network card and input the correct password to get connected to the wireless access point. Double click the icon on your desktop.



2. Scan available wireless access point. Scan results will display in the 'Available Network' zone. If you can't find the access point you wish to connect here, click the 'Refresh' button, until you can find your wireless access point..



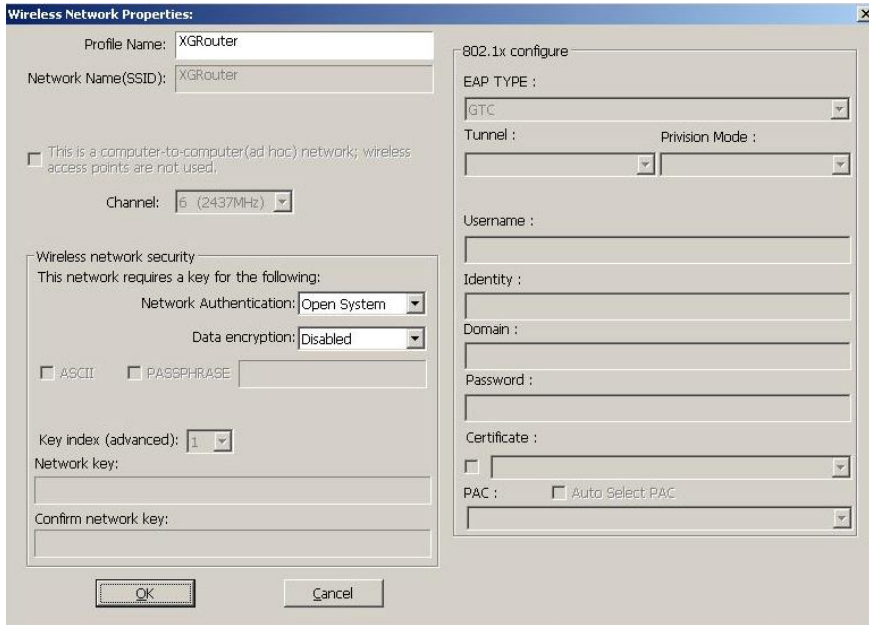
3. Choose the wireless access point's SSID, and click 'Add to Profile'.



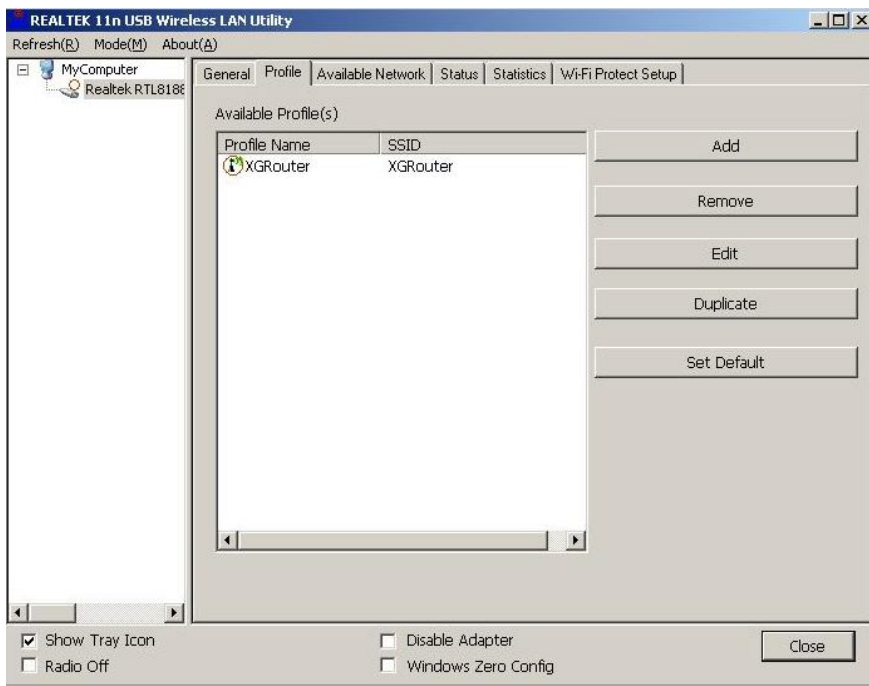
4. If it's an open wireless network system, you will be warned by this pop up dialogue .



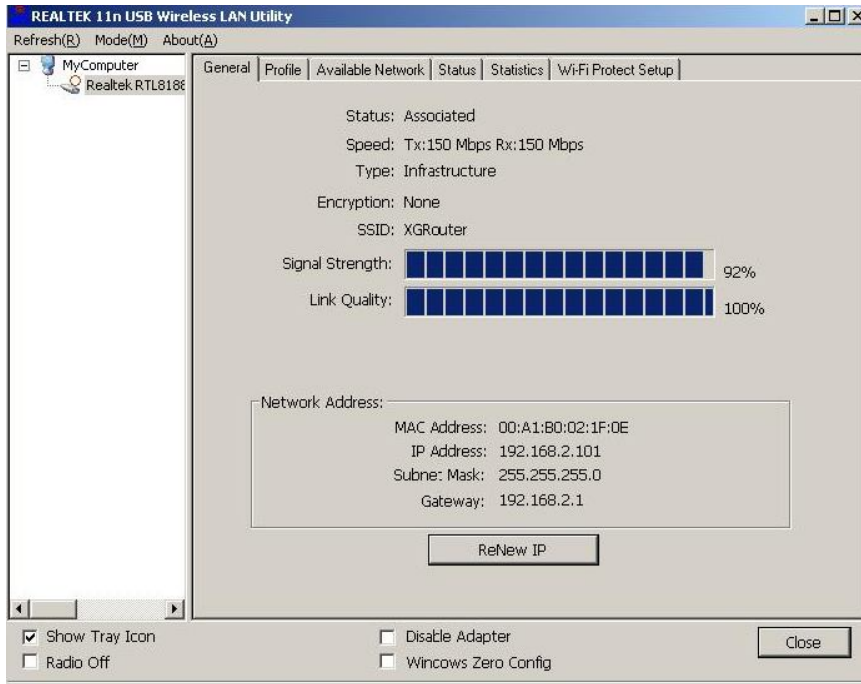
5. Click 'OK', and fill your information in the 'Wireless network properties', or just click 'OK'. If the wireless access point has enabled encryption, you will have to input the WEP key or WPA preshared key in the form.



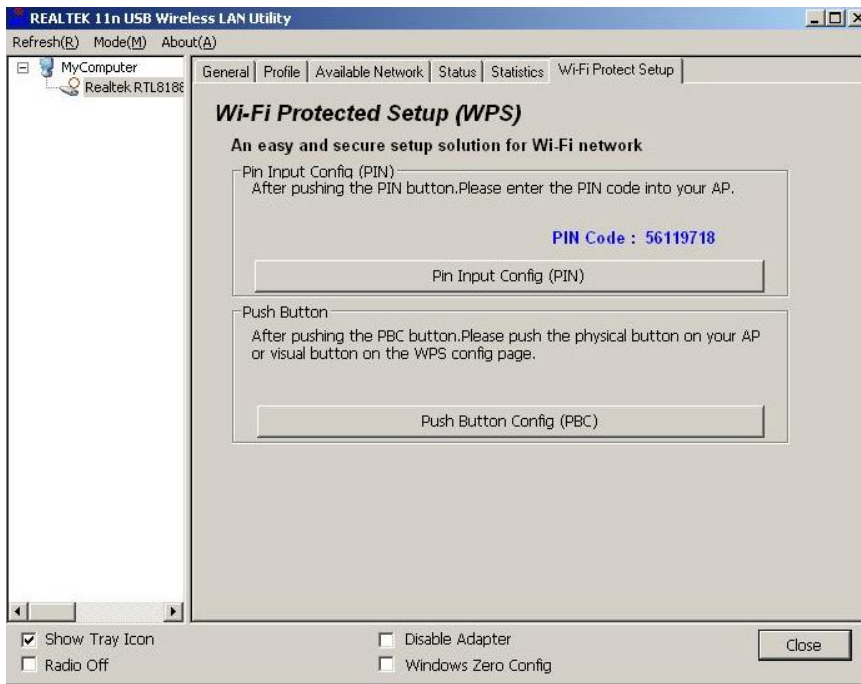
- Then, you can find your wireless access point in the 'Profile', it will automatically connect to the access point every time you use your usb network card.



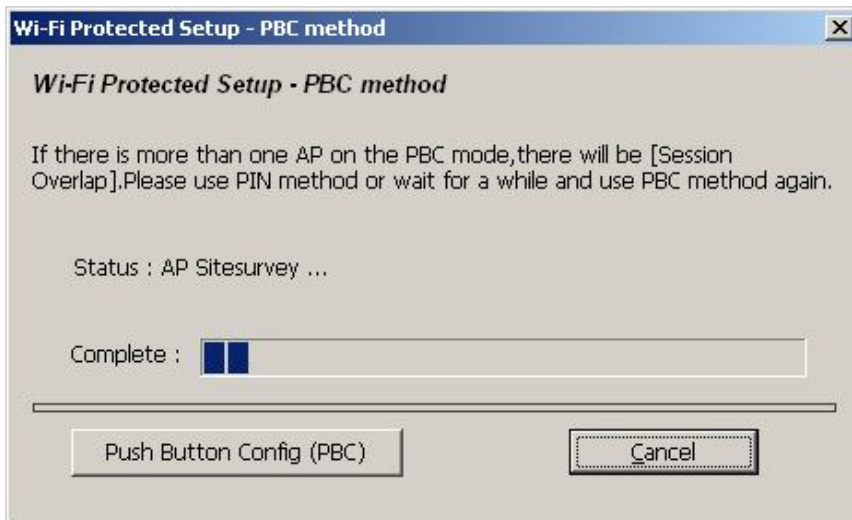
- After you have connected to the wireless access point successfully, click the 'General' menu, you can get the detail information of connected access point, such as status, IP address, speed and so on.



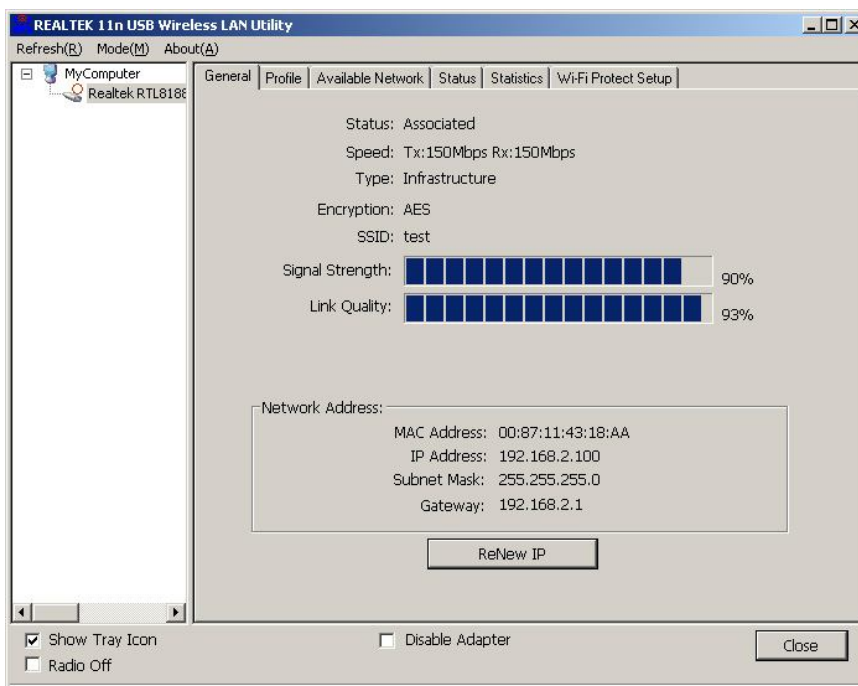
- Click the 'Wi-Fi Protect Setup' menu, by a simple setting allows you to secure connection to your wireless AP.



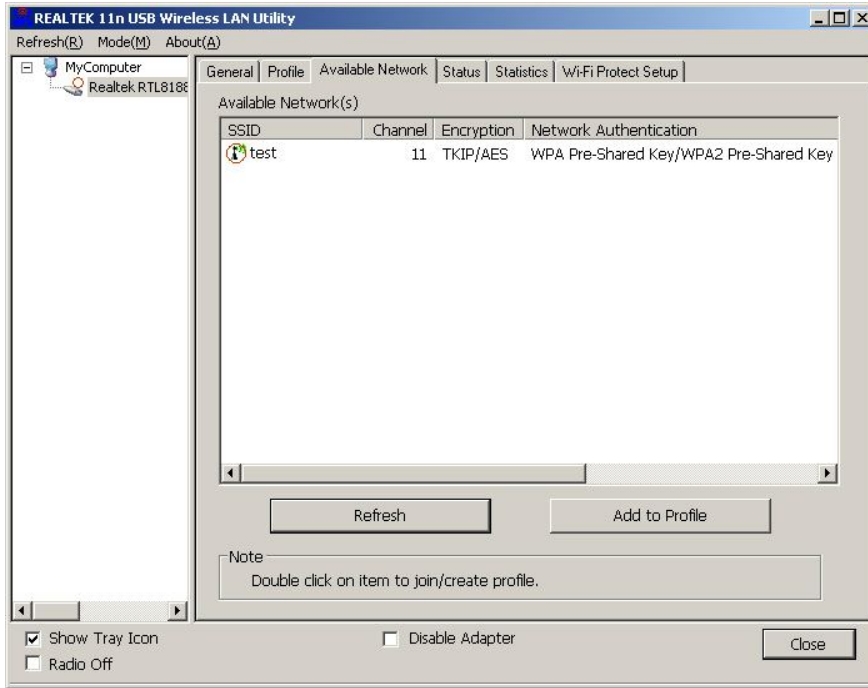
- This wireless network card with a WPS button, you can easily connect to a wireless router and achieve encryption; press this button, the computer screen appears around the vicinity of the AP signal search interface.



10. At this point just press the WPS button wireless router; wait a while to realize the connection and encryption.



11. Click on the available network we can see that encryption is WPA-WPA2-PSK/TKIP-AES. You have established a good secure wireless network.



FCC Caution: Any changes or modifications not expressly approved by the party responsible for compliance could void the user's authority to operate this equipment.

This device complies with Part 15 of the FCC Rules. Operation is subject to the following two conditions: (1) This device may not cause harmful interference, and (2) this device must accept any interference received, including interference that may cause undesired operation.

NOTE: This equipment has been tested and found to comply with the limits for a Class B digital device, pursuant to Part 15 of the FCC Rules.

These limits are designed to provide reasonable protection against harmful interference in a residential installation. This equipment generates, uses and can radiate radio frequency energy and, if not installed and used in accordance with the instructions, may cause harmful interference to radio communications.

However, there is no guarantee that interference will not occur in a particular installation.

If this equipment does cause harmful interference to radio or television reception, which can be determined by turning the equipment off and on, the user is encouraged to try to correct the interference by one or more of the following measures:

- Reorient or relocate the receiving antenna.
- Increase the separation between the equipment and receiver.
- Connect the equipment into an outlet on a circuit different from that to which the receiver is connected.
- Consult the dealer or an experienced radio/TV technician for help.

For portable devices

FCC RF Radiation Exposure Statement:

1. This Transmitter must not be co-located or operating in conjunction with any other antenna or transmitter.
2. This equipment complies with FCC RF radiation exposure limits set forth for an uncontrolled environment. This device was tested for typical hand held operations with the device contacted directly to the human body to the sides of the device. To maintain compliance with FCC RF exposure compliance requirements, avoid direct contact to the transmitting antenna during transmitting.