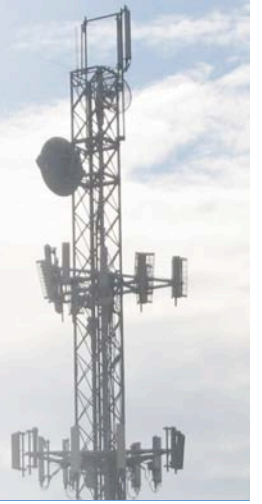




XTREMERange9

Carrier-Class 900MHz Radio Module

OEM INTEGRATION GUIDE



XTREMERange9

TECHNICAL SPECIFICATIONS

CARD INFORMATION	
Radio Operation	Proprietary 900MHz based on 802.11b/g CCK/OFDM
Interface	32-bit mini-PCI Type IIIA
Operation Voltage	3.3VDC
Antenna Ports	Dual u.fl (Primary only required; secondary optional for diversity)
Temperature Range	-45C to +90C
Security	WPA, WPA2, AES-CCM & TKIP Encryption, 802.1x, 64/128/152bit WEP
Data Rates	1Mbps-11Mbps (802.11b), 6-54Mbps (802.11g)
RoHS Compliance	YES

REGULATORY INFORMATION	
Wireless Modular Approvals	FCC and Industry Canada

OPERATING FREQUENCY 907-922MHz							
900MHz TX SPECIFICATIONS				900MHz RX SPECIFICATIONS			
	DataRate	TX Power	Tolerance		DataRate	Sensitivity	Tolerance
802.11b	1Mbps	27 dBm	+/-1.5dB	802.11b	1Mbps	-93 dBm	+/-2dB
	2Mbps	27 dBm	+/-1.5dB		2Mbps	-92 dBm	+/-2dB
	5.5Mbps	27 dBm	+/-1.5dB		5.5Mbps	-91 dBm	+/-2dB
	11Mbps	27 dBm	+/-1.5dB		11Mbps	-88 dBm	+/-2dB
802.11g OFDM	6Mbps	27 dBm	+/-1.5dB	802.11g OFDM	6Mbps	-91 dBm	+/-2dB
	9Mbps	27 dBm	+/-1.5dB		9Mbps	-90 dBm	+/-2dB
	12Mbps	27 dBm	+/-1.5dB		12Mbps	-88 dBm	+/-2dB
	18Mbps	27 dBm	+/-1.5dB		18Mbps	-87 dBm	+/-2dB
	24Mbps	27 dBm	+/-1.5dB		24Mbps	-83 dBm	+/-2dB
	36Mbps	25 dBm	+/-1.5dB		36Mbps	-83 dBm	+/-2dB
	48Mbps	23 dBm	+/-1.5dB		48Mbps	-74 dBm	+/-2dB
	54Mbps	21 dBm	+/-1.5dB		54Mbps	-71 dBm	+/-2dB

CURRENT CONSUMPTION INFORMATION							
900MHz TX SPECIFICATIONS				900MHz RX SPECIFICATIONS			
	DataRate	Current	Tolerance		DataRate	Current	Tolerance
802.11b	1Mbps	1.2 A	+/-100 mA	802.11b	1Mbps	500mA	+/-100 mA
	2Mbps	1.2 A	+/-100 mA		2Mbps	500mA	+/-100 mA
	5.5Mbps	1.2 A	+/-100 mA		5.5Mbps	500mA	+/-100 mA
	11Mbps	1.2 A	+/-100 mA		11Mbps	500mA	+/-100 mA
802.11g OFDM	6Mbps	1.2 A	+/-100 mA	802.11g OFDM	6Mbps	500mA	+/-100 mA
	9Mbps	1.2 A	+/-100 mA		9Mbps	500mA	+/-100 mA
	12Mbps	1.2 A	+/-100 mA		12Mbps	500mA	+/-100 mA
	18Mbps	1.2 A	+/-100 mA		18Mbps	500mA	+/-100 mA
	24Mbps	1.2 A	+/-100 mA		24Mbps	500mA	+/-100 mA
	36Mbps	1.1 A	+/-100 mA		36Mbps	500mA	+/-100 mA
	48Mbps	1.0 A	+/-100 mA		48Mbps	500mA	+/-100 mA
	54Mbps	0.85 A	+/-100 mA		54Mbps	500mA	+/-100 mA

900MHz FREQUENCY CHANNEL SUPPORT							
Frequency	5MHz	10MHz	20MHz	Frequency	5MHz	10MHz	20MHz
907 MHz				917 MHz			
912 MHz				922 MHz			

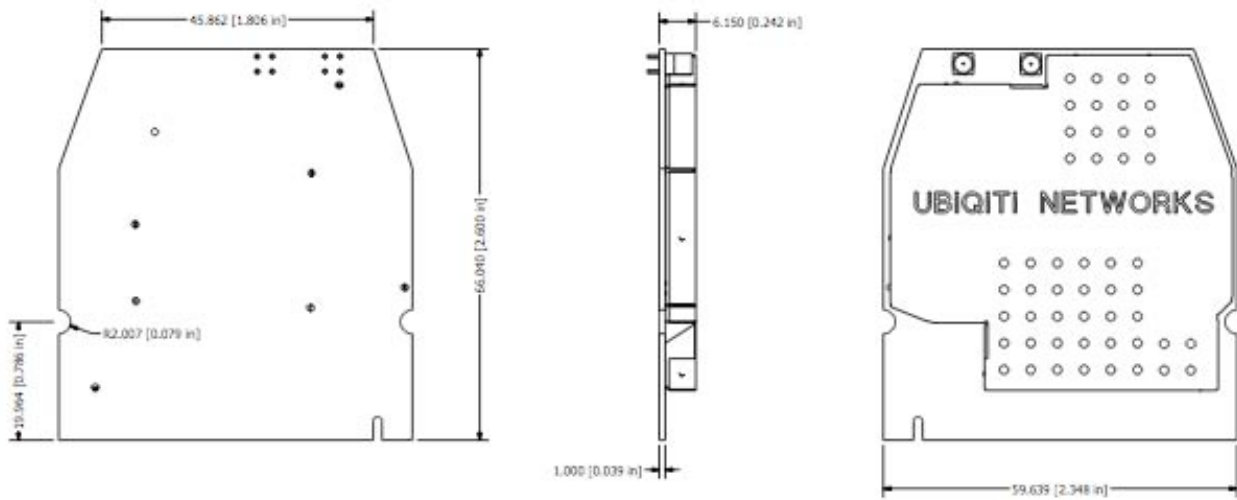
RANGE PERFORMANCE	
Indoor (Antenna Dependent):	Up to 100meters
Outdoor (Antenna Dependent):	Over 1km

DRIVER INFORMATION	
Operating System Support	Linux MADWIFI, WindowsXP, Windows2000
Advanced Mobility / QuickHandoff	WindowsXP/2000 Utility with Enhanced Mobility Driver from Ubiquiti
Cisco Support	CCX 4.0 Supported Driver/Utility also available from Ubiquiti

For help with MADWIFI or other Special Driver Support, Please e-mail support@ubnt.com

XTREMERange9

MECHANICAL DIMENSIONS



495-499 Montague Expwy.
Milpitas, CA 95035
San Jose, CA 95112
T (408)-942-3085
F (408)-351-4973
<http://www.ubnt.com>