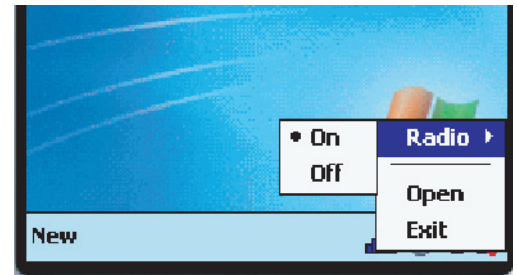


Wireless/Internet Speed Dial

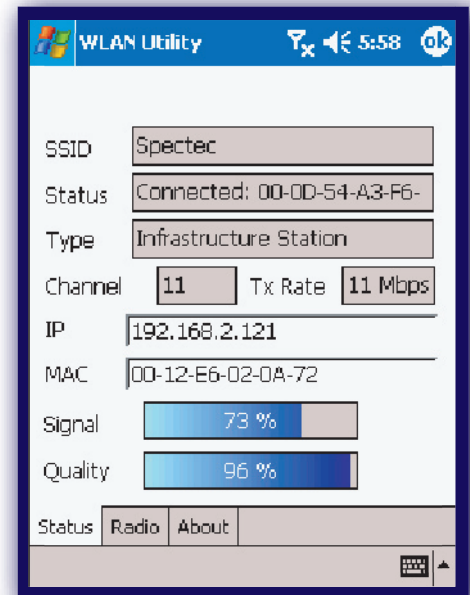
< Click 

1. Fast change Wireless card **On/off** function.
2. **“Open”** can direct into WLAN Utility screen for more information.



WLAN Utility has 3 labels (**Status/Radio/About**):

***Status** --Show SSID, IP Address, Mac Address, signal and quality info. etc.



***Radio** --Can **Enable/Disable** Wi-Fi card and power saving mode selections.

< Click **On** button--

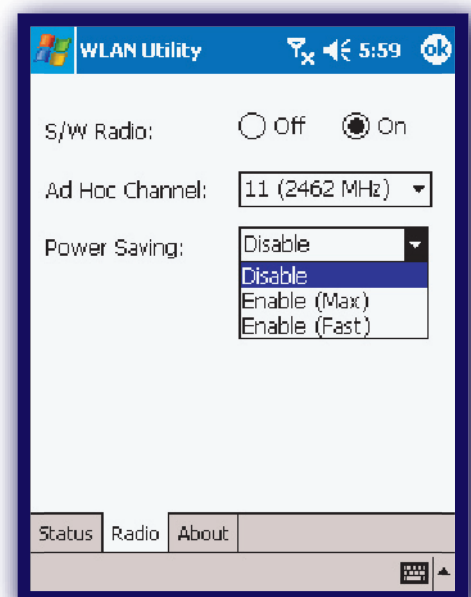
Enables wireless network functions.

< Click **Off** button--

Disable Wireless network functions.

< **Ad-hoc Channel:**

Select Ad-hoc channel (1~11)



Power Saving:

< **Disable:** No Power saving

< **Enable (Max):** Maximum of Power Saving, but affect the download speed

< **Enable (Fast):** would not effect the down load speed (recommend)



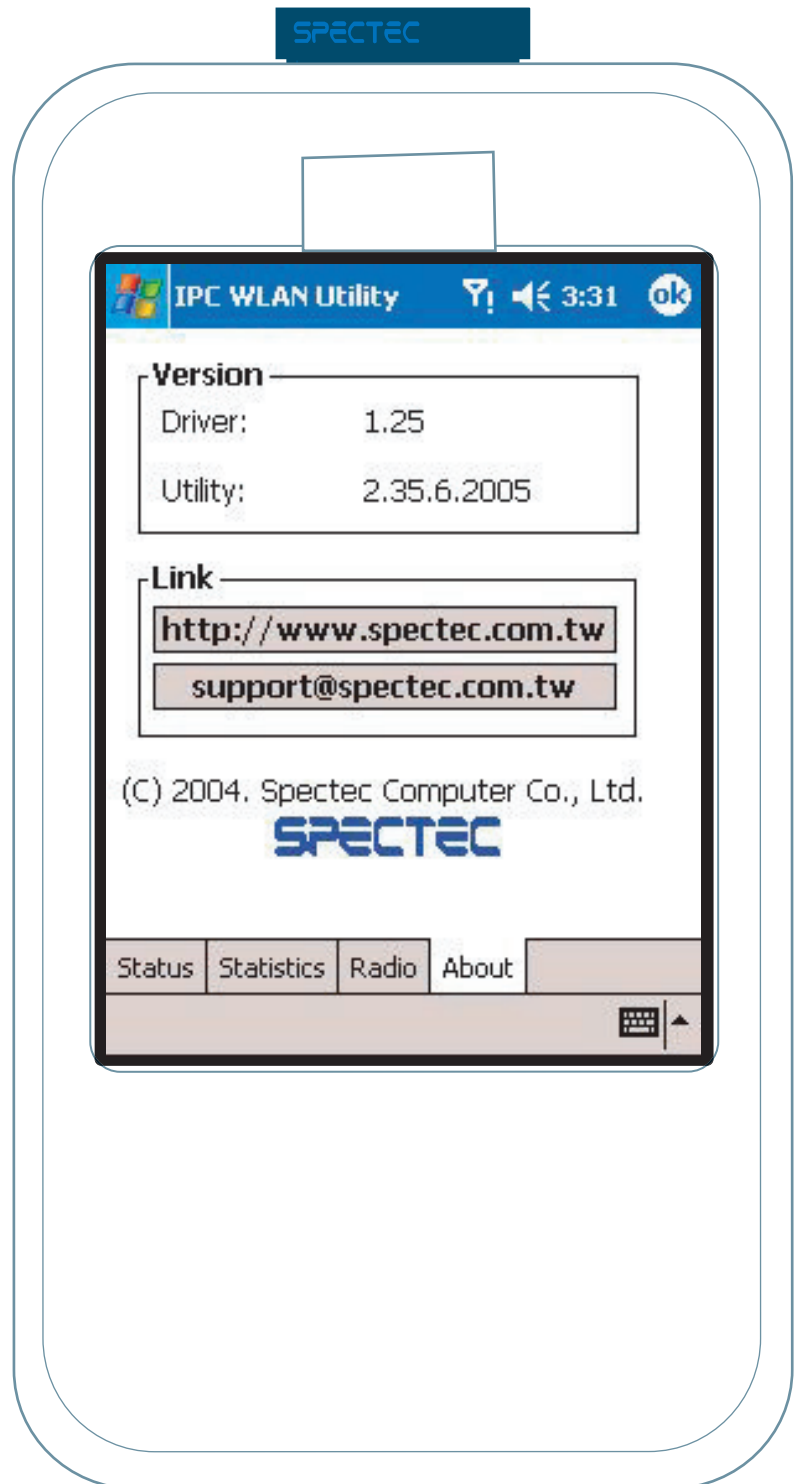
***About** -- Shows SPECTEC connections info.

< **Driver:** Current version of driver you installed.

< **Utility:** Current version of utility you installed.

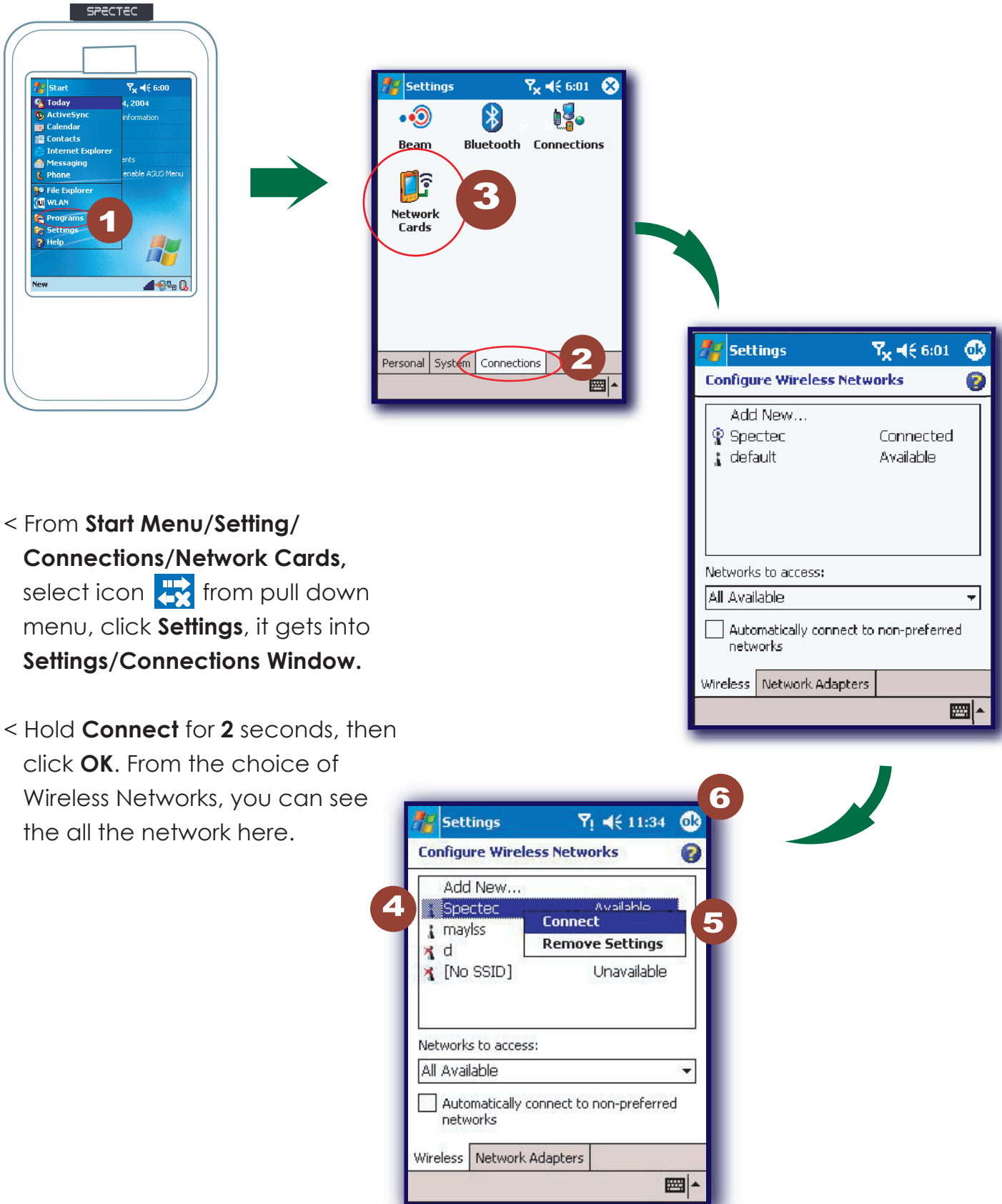
< **SPECTEC Web Site:**
<http://www.spectec.com.tw>

< **Technical Support:**
support@spectec.com.tw





■ To Select Networks Manually



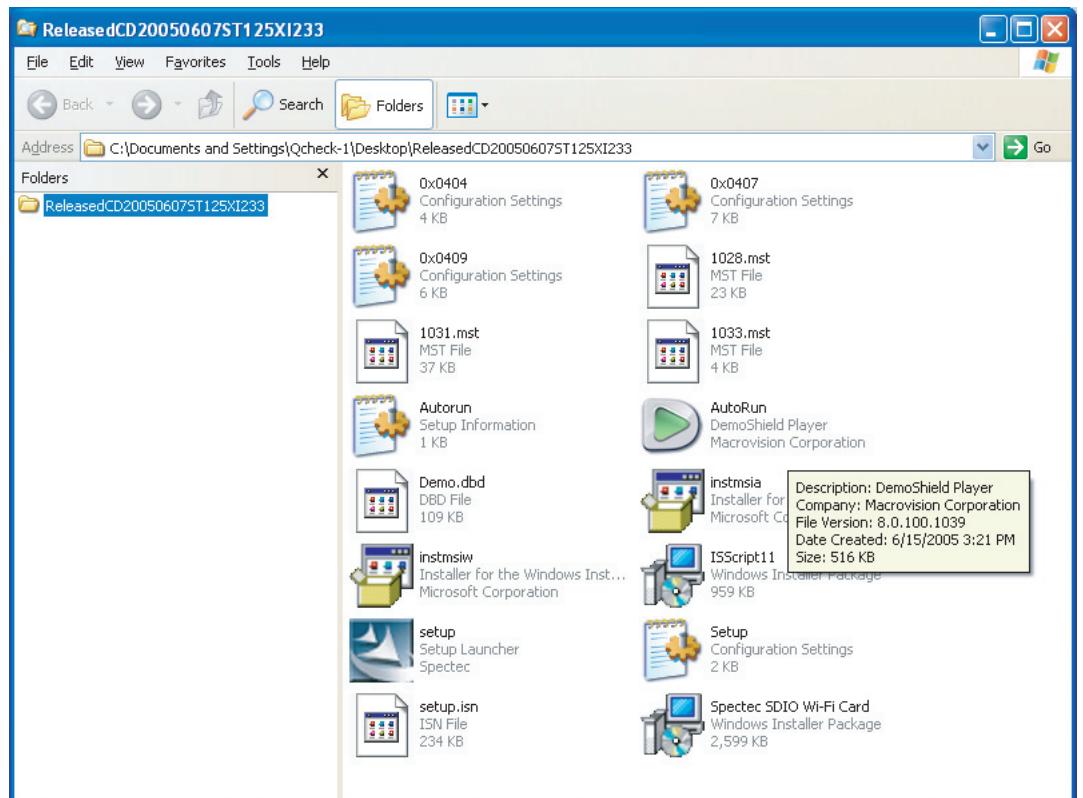


CD info

< Click **Browse Contents** button **1** to review all the files on CD



< Review all the files list on CD





Contact Us

< Click **Contact Us** button **1** to review our information.

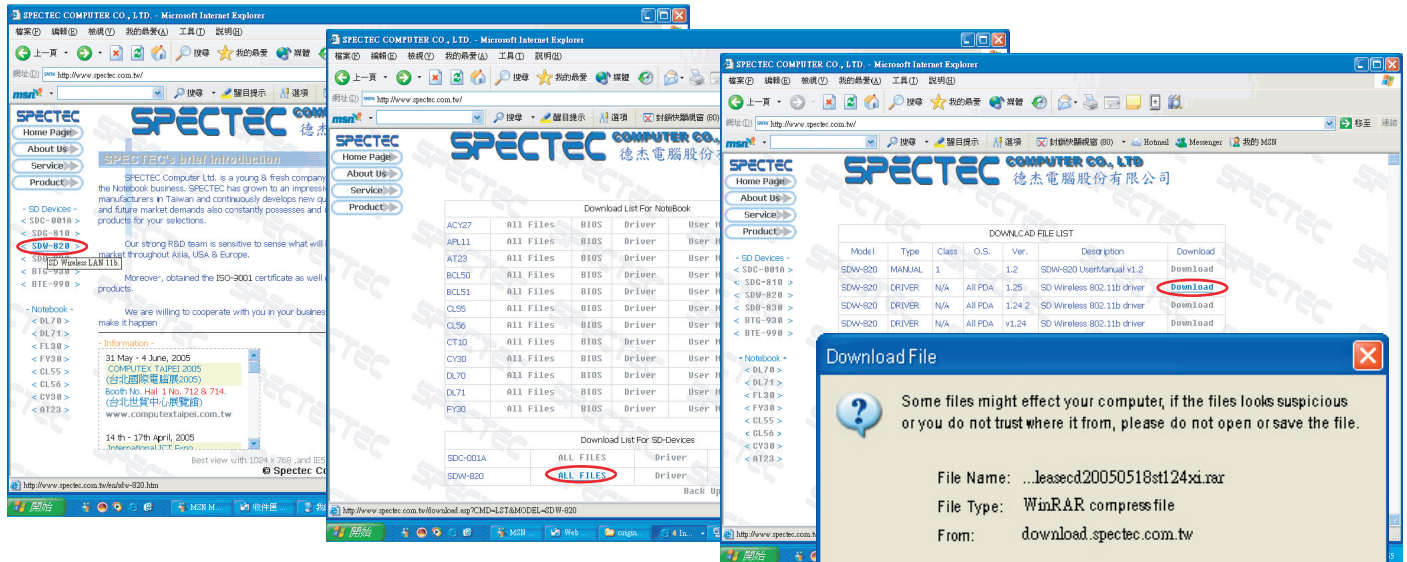


Contact Information



How to Upgrade Software

Download the newest SD Device, please go to SPECTEC website:
<http://www.spectec.com.tw>




Click **Save 1**

How to Install Software

1. Driver (cab file)

Take out the WLAN card, click "reset", connect computer through **Microsoft Active Sync**, download Driver cab file copy to any list of PDA, click **Yes** to finish install.

2. Utility (.exe install)

- Connect **Active Sync** to PC
- Copy **Utility 235.exe** to **myDevice/windows/startmenu/programs**
- The icon  will show up in **Program**.



3. Auto run:

- download compressed file:
ReleasedCD20050625ST125n235-2.rar
- connect **Active Sync** to PC
- Decompressed file - ReleasedCD20050625ST125n235-2.rar
- The Autorun menu will show up (please see P2~P5 for Installation steps)

4. User Manul download (Adobe PDF)

Please go to the address - <http://www.adobe.com/products/acrobat/readstep2.html> to download free Adobe Reader software





■ AP Compatibility List

Test condition and test environment

DUT: WLAN-11b

Vendor	Accton		ASUS				Atheros		BENQ		BELKIN		Buffalo			
Model	IG 2004W		WL-500b		WL-530g		AR5002AP		AWL700		F5D7230		AG54		WLA-L11G-L	
Rate	TX	RX	TX	RX	TX	RX	TX	RX	TX	RX	TX	RX	TX	RX	TX	RX
Auto Rate	1.55	2.62	1.71	2.88	1.49	2.43	1.61	2.84	1.67	2.39	1.59	2.43	1.61	2.82	1.66	2.90

Vendor	Cisco		Corega		DLink				Gemtek		Interepoch		Intersil		Linksys	
Model	AP1220		WLBARGP		DLink624		DLink724		WX-1500 series		IWE-1100A		ISL39300		WRK 54G	
Rate	TX	RX	TX	RX	TX	RX	TX	RX	TX	RX	TX	RX	TX	RX	TX	RX
Auto Rate	1.67	2.87	1.67	2.67	1.63	2.80	1.63	2.80	1.61	2.44	1.60	2.44	1.70	2.91	1.64	2.78

Vendor	Maxim		OriNoCo		PCI		Proxim		RAYTAC		SMC		3Com			
Model	WAP-G54A		AP-200		BLW-04gm		AP 600		DS2400		WBR14-G		XJACK		AP2000	
Rate	TX	RX	TX	RX	TX	RX	TX	RX	TX	RX	TX	RX	TX	RX	TX	RX
Auto Rate	1.63	2.89	1.56	2.73	1.63	2.80	1.63	2.79	1.64	2.67	1.67	2.43	1.60	2.78	1.68	2.78

Vendor	Synnex		MSI		AboCom		SENAO		ZERO ONE	
Model	LM-WCAS3040		RG54G2		WB104k		NL-2511SR+		AF411W	
Rate	TX	RX	TX	RX	TX	RX	TX	RX	TX	RX
Auto Rate	1.59	2.77	1.60	2.65	1.69	2.87	1.66	2.49	1.54	2.69

* Measurements: mbps RX: Receiver TX: Sender

* Test Environment : Night without Raining °C ~ 32°C

Distance from 5m ~ 30m

* Collect data tool : Windows CE Platform Builder 5.0 performance monitor tool



■ Frequently Ask Question

Q: After installation from CD, how many files will be installed into your device?

A: After installation, you will find some dll files are installed in **My Device\Windows, WLAN\Utility** is in your **Programs**, and they are quite small, totally around 300 KB.

Q: How to stop connecting the wireless/internet temporary?

A: You can click "**Off**" button of WLAN Utility. When the 5 blue bars are **white**, it means Wi-Fi is **disable**. If you want to connect the internet again, please return to "**On**" Setting.

Q: What does it mean of 5 bars from "WLAN Utility"?

A: 5 bars shows the signal strong or weak, more blue is more strong, all white means disconnected.

Q: The card has IP address, but it can not browse the web page?

A: When connecting internet with the weak signal, CRC might have too many errors and can not view the web page, please connect it around empty field.

Q: Can our Wi-Fi card be used for internet phone, like Skype...softwares?

A: Yes, our Wi-Fi card can be used for Skype softwares, **use SKYPE with headphones has better result.**



Warranty

Thank you for purchasing Spectec's products. For Spectec's products quality service, please read the list below for your rights.

1. Start the day when purchasing the product within 1 year, please provide purchasing document and purchasing date when ask for service.
2. The product passed all the quality tests, and test AP to work, suggest to use with the list for AP and other acceptable industry standard equipments.
3. If the product is damaged cause by the product design, produce quality, we will fix or exchange products.
4. The Warranty does not include accident or artificial cause, inappropriate use, installation mistakes, self change parts and natural causes.
5. For damage cause by other factories' parts equipments.



■ License Agreement

CAREFULLY READ THE FOLLOWING TERMS AND CONDITIONS BEFORE USING THIS PRODUCT. IT CONTAINS SOFTWARE, THE USE OF WHICH IS LICENSED BY SPECTEC, Co., Ltd., TO ITS CUSTOMERS FOR THEIR USE ONLY AS SET FORTH BELOW. IF YOU DO NOT AGREE TO THE TERMS AND CONDITIONS OF THIS AGREEMENT, DO NOT USE THE SOFTWARE. USING ANY PART OF THE SOFTWARE INDICATES THE ACCEPTANCE OF THESE TERMS.

LICENSE: SPECTEC grants you a nonexclusive license to use the accompanying software program(s) (the "Software") subject to the terms and restrictions set forth in this License Agreement. You are not permitted to lease, rent, distribute or sublicense the Software or to use the Software in a time-sharing arrangement or in any other unauthorized manner. Further, no license is granted to you in the human readable code of the Software (source code). Except as provided below, this License Agreement does not grant you any rights to patents, copyrights, trade secrets, trademarks, or any other rights in respect to the Software.

The Software is licensed to be used on any workstation or any network server owned by or leased to you, provided that the Software is used only in connection with a SPECTEC adapter. You may reproduce and provide one (1) copy of the Software and supporting documentation for each such workstation or network server on which the Software is used as permitted hereunder. Otherwise, the Software and supporting documentation may be copied only as essential for backup or archive purposes in support of your use of the Software as permitted hereunder. You must reproduce and include all copyright notices and any other proprietary rights notices appearing on the Software and the supporting documentation on any copies that you make.

NO ASSIGNMENT; NO REVERSE ENGINEERING: You may not transfer or assign the Software and/or this License Agreement to another party without the prior written consent of SPECTEC. If such consent is given and you transfer or assign the Software and/or this License Agreement, then you must, at the same time, either transfer any copies of the Software as well as the supporting documentation to the same party or destroy any such materials not transferred. Except as set forth above, you may not transfer or assign the Software or your rights under this License Agreement. Modification, reverse engineering, reverse compiling, or disassembly of the Software is expressly prohibited.

TRADE SECRETS; TITLE: You acknowledge and agree that the structure, sequence, and organization of the Software are the valuable trade secrets of SPECTEC and its suppliers. You agree to hold such trade secrets in confidence. You further acknowledge and agree that ownership of, and title to, the Software and all subsequent copies thereof, regardless of the form or media, are held by SPECTEC and its suppliers.

TERM AND TERMINATION: This license will expire ten (10) years from the date that you first use the Software, if it is not earlier terminated. You may terminate it at any time by destroying the Software and Documentation together with all copies and merged portions in any form. It will also terminate immediately if you fail to comply with any term or condition of this License Agreement. Upon such termination, you agree to destroy the Software and documentation, together with all copies and merged portions in any form.

GOVERNING LAW: This License Agreement shall be governed by the laws of the State of California as such laws are applied to agreements entered into and to be performed entirely within California between California residents and by the laws of the United States. You agree that the United Nations Convention on Contracts for the International Sale of Goods (1980) is hereby excluded.

LIMITED WARRANTY; LIMITATION OF LIABILITY: All warranties and limitations of liability applicable to the Software are as stated on the Limited Warranty Card or in the product manual accompanying the Software. Such warranties and limitations of liability are incorporated herein in their entirety by this reference.

SEVERABILITY: In the event any provision of this License Agreement is found to be invalid, illegal or unenforceable, the validity, legality and enforceability of any of the remaining provisions shall not in any way be affected or impaired and a valid, legal and enforceable provision of similar intent and economic impact shall be substituted therefor.

ENTIRE AGREEMENT: This License Agreement sets forth the entire understanding and agreement between you and SPECTEC and may be amended only in a writing signed by both parties.

Spectec Computer Co., Ltd.

6F No. 92, Nanking E. Rd. Sec. 5, Taipei, Taiwan, R.O.C.

Tel: 886-2-2753-2953

Fax: 886-2-2753-2949

Fax: 886-2-2753-2497

www.spectec.com.tw

spectec@spectec.com.tw

spectec@ms17.hinet.net



SPECTEC

Mini
SD

WLAN-11b

WiFi
CERTIFIED

FC CE

FCC ID: S2Y-MINIWLAN11B
0012E6000506

Specifications

Interface: Support SDIO 1.0

Frequency: Fully integrated, 2.4 GHz band direct conversion transceiver

Security: High performance engine for WEP, WPA, TKIP and AES support

Radio Type: IEEE 802.11b support DSSS system

Operating Channels: 1~11 channels for U. S.

TX Data Rate: 1, 2, 5.5, 11 Mbps Data Rate

Low Voltage:

< Power consumption: Operating Voltage: 3.0 V – 3.5 V

< Receive mode: 60 mA

< Transmit mode: 116 mA for 15 dBm Pout

< Avg. Operation: 188 mA

Support:

< STA (Ad-hoc and infrastructure) and AP mode

< DCF/PCF

OS Support: PPC 2003, Windows Mobile 2003 Second Edition for PPC & Smartphone, Mobile 5.0 for PPC & Smartphone, WinCE 4.X

Operating Range: Outdoor: 200 ~ 400 m, Indoor: 100 m

Applications: FCC, CE, DGT, Wi-Fi compliance

Dimension: 28 mm x 20 mm x 1.4 mm

Weight: Aprox. 1.5 g

*All specifications are subject to change without prior notice.

NOTE: The changes or modifications not expressly approved by the party responsible for compliance could void the user's authority to operate the equipment.

To comply with the FCC RF exposure compliance requirements, this device and its antenna must not to be co-located or operating to conjunction with any other antenna or transmitter.

This device complies with Part 15 of the FCC Rules. Operation is subject to the following two conditions: (1) this device may not cause harmful interference, and (2) this device must accept any interference received, including interference that may cause undersired operation.



Thank You for Purchasing Spectec's Products

Spectec Computer Co., Ltd.
www.spectec.com.tw