

WUBR-507N(LFG)
802.11a/b/g/n USB Module
Quick Installaton Guide

Version 1.0

Contents

1. Package Contents.....	3
2. WLAN Adapter Quick installation Guide.....	4
3. Network Card Installation.....	4
4. Connect to Wireless Access Point	9

Copyright statement

No part of this publication may be reproduced, stored in a retrieval system, or transmitted in any form or by any means, whether electronic, mechanical, photocopying, recording, or otherwise without the prior writing of the publisher.

November 2010

1. Package Contents

Before you starting to use this wireless network card, please check if there's anything missing in the package, and contact your dealer of purchase to claim for missing items:

Package Contents

Please make sure you have the following in the box:

- ◆ WUBR-507N(LFG) USB Module
- ◆ Driver / QIG CDROM

Note: if anything is missing, please contact your vendor

2. WLAN Adapter Quick installation Guide

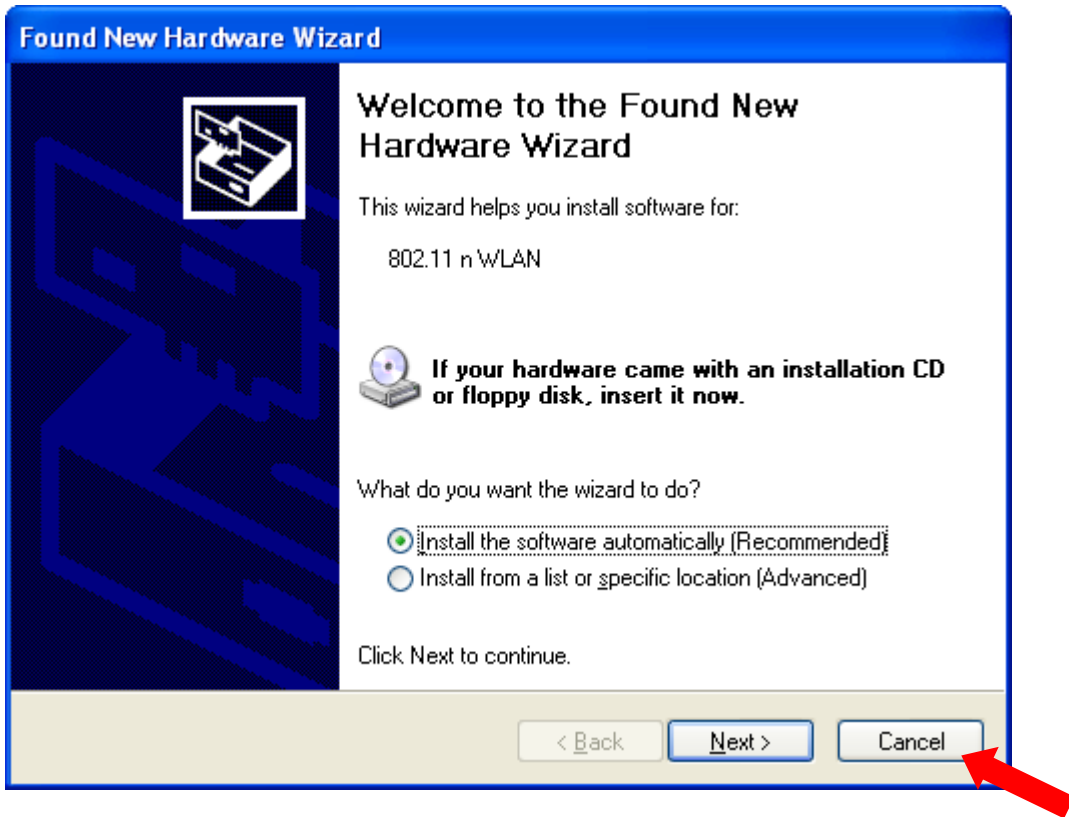
Please follow the following instructions to use Ralink config utility to connect to wireless access point.

3. Network Card Installation

1. Install the WUBR-507N(LFG) USB Module into your computer.

Never use force to insert the card, if you feel it's stuck, flip the card over and try again.

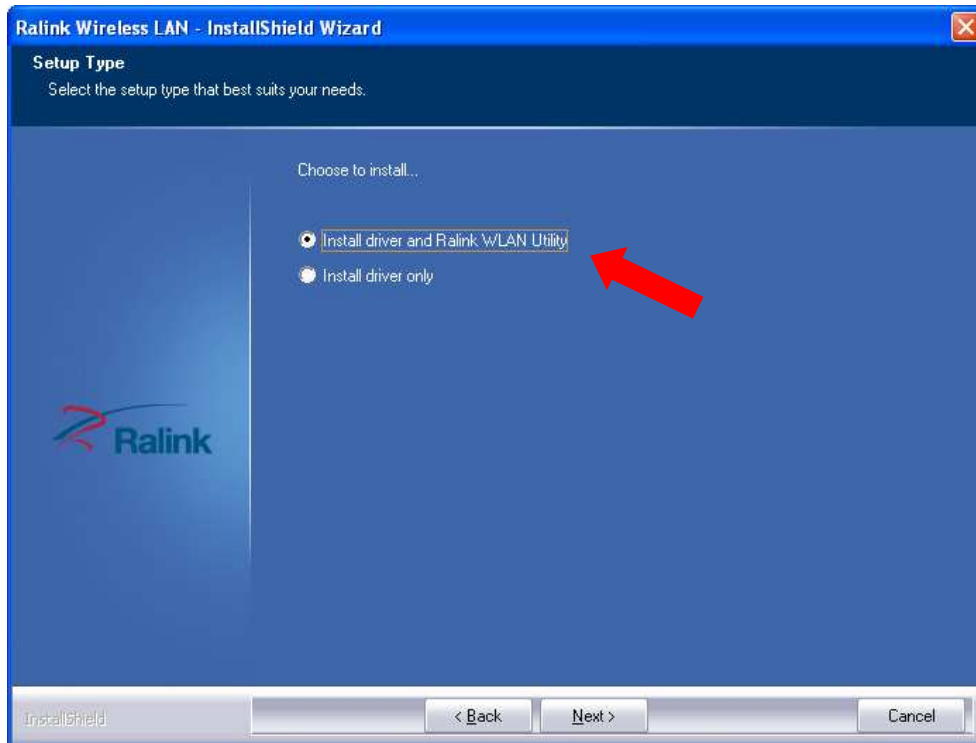
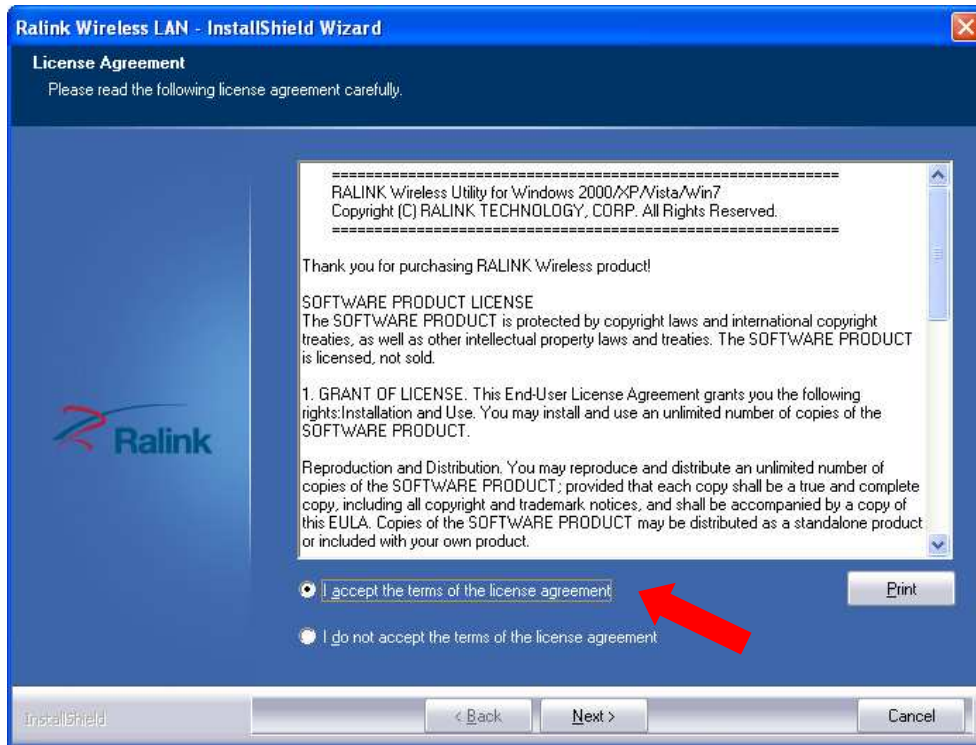
2. If the following message appears on your computer, click **'Cancel'**.

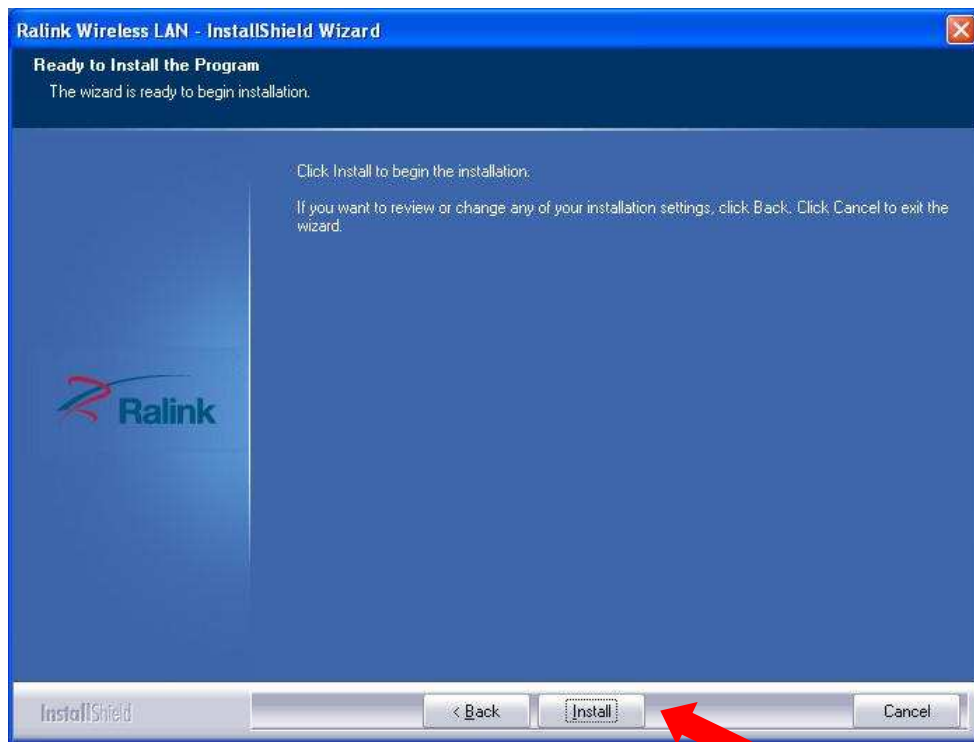
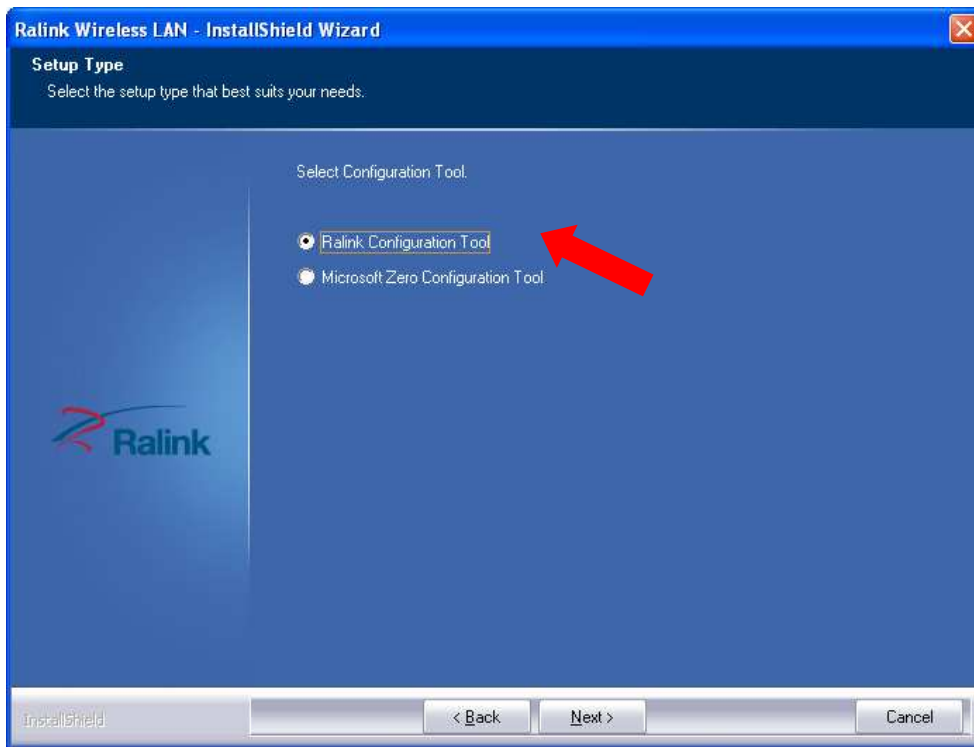


3. Insert the Driver CD then wait for the Autorun prompt.

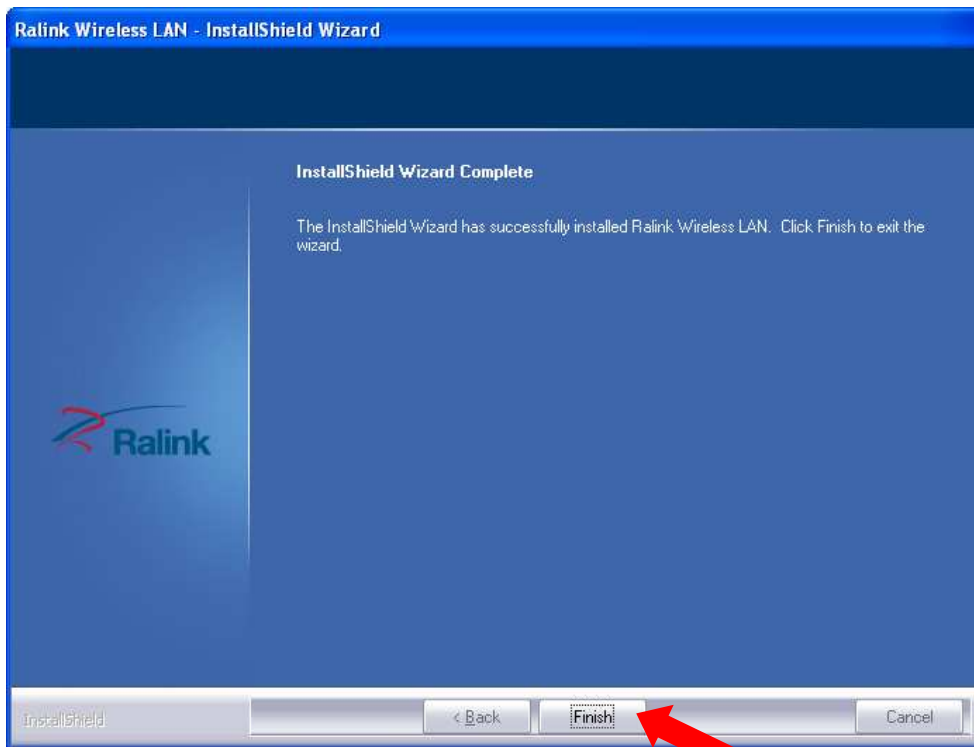


4. If Autorun does not work, please browse the CD content and double click the “**Autorun.exe**”.
5. Click the “Driver” for beginning the installation.
6. Click “Next” and then follow the instructions on the screen to continue the installation.





7. When you see this message, please click “Finish” to complete the driver installation process.

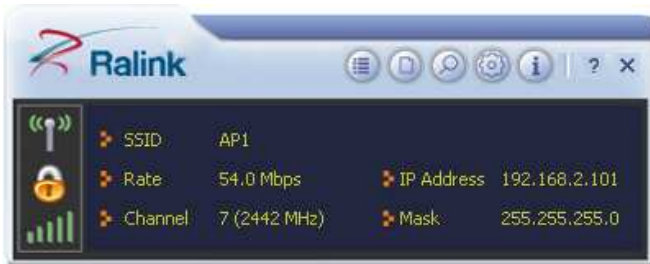


4. Connect to Wireless Access Point

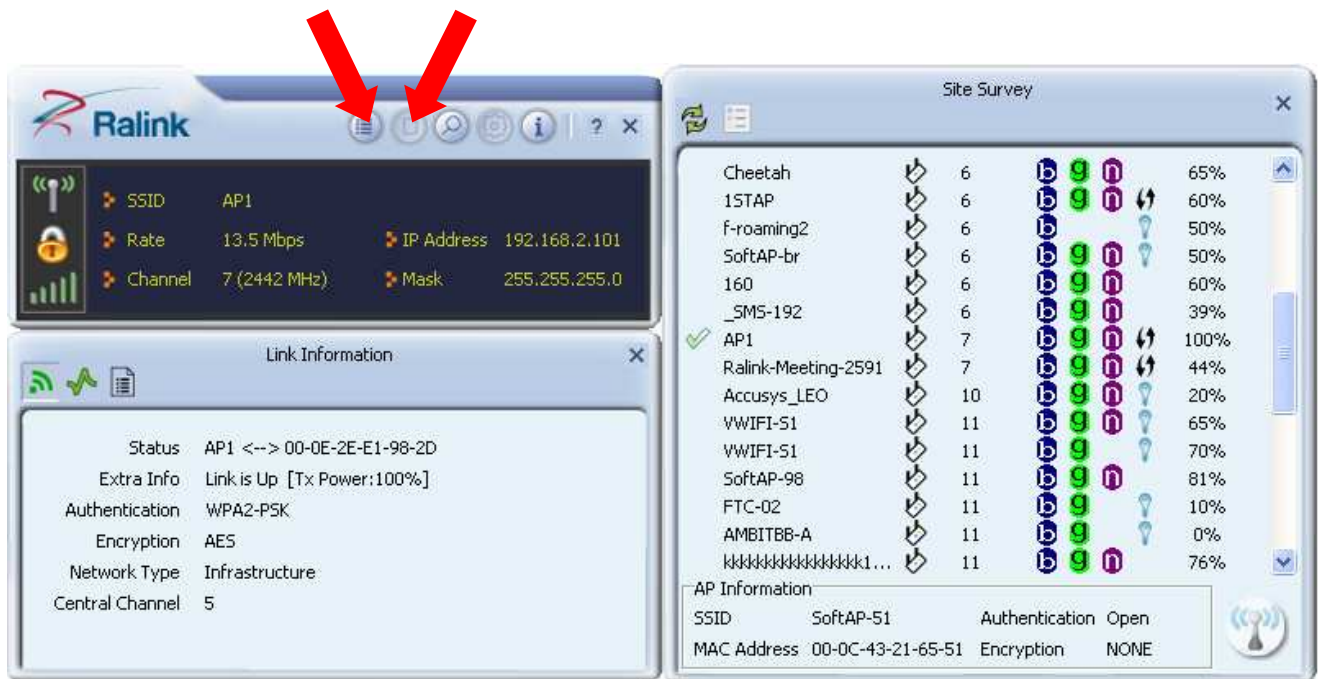
1. After installation is complete, a small Ralink icon appears in the notifications area of the taskbar. You can double click it to maximize the RaUI dialog box.



2. When starting RaUI, the system will connect to the AP with best signal strength without setting a profile or matching a profile setting. When starting RaUI, it will issue a scan command to a wireless NIC. After two seconds, the AP list will be updated with the results of a BSS list scan. The AP list includes most used fields, such as SSID, network type, channel used, wireless mode, security status and the signal percentage. The arrow icon indicates the connected BSS or IBSS network. The dialog box is shown below.




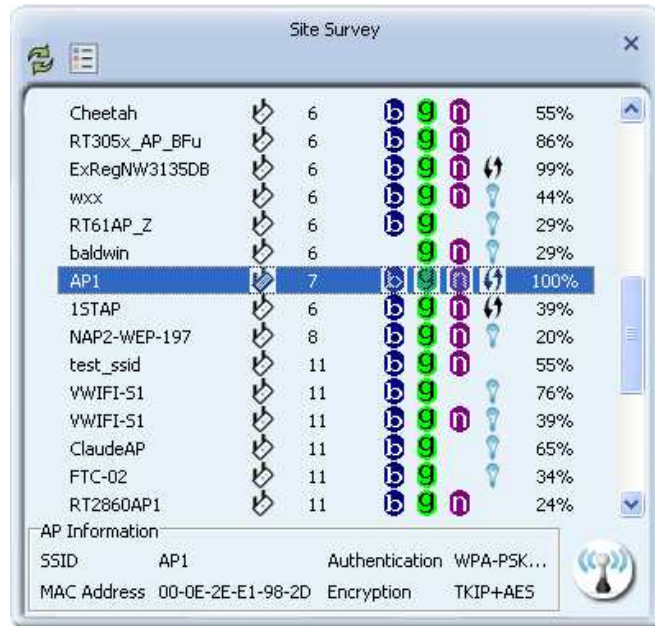
You could click the two buttons which red arrow pointed to open the “Site Survey” and “Link Information” page to show detail information.



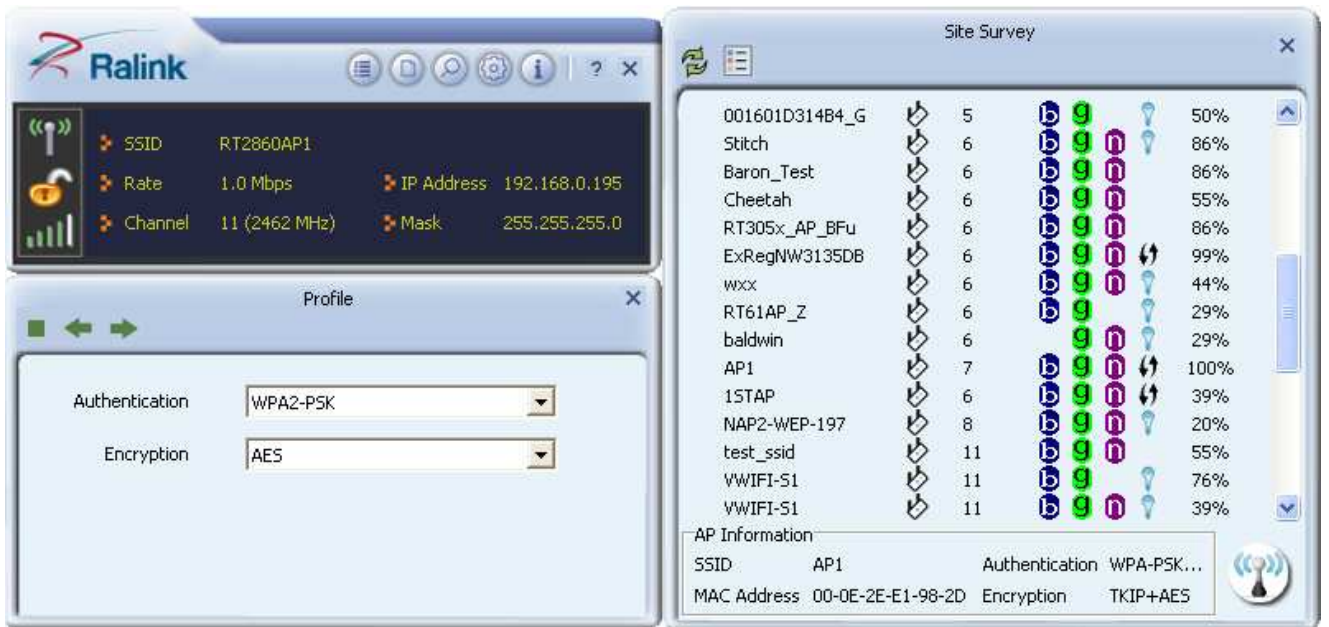
3. You could follow the steps to connect to the AP which you want to connect (Example to

Configure Connection with WPA2-PSK).

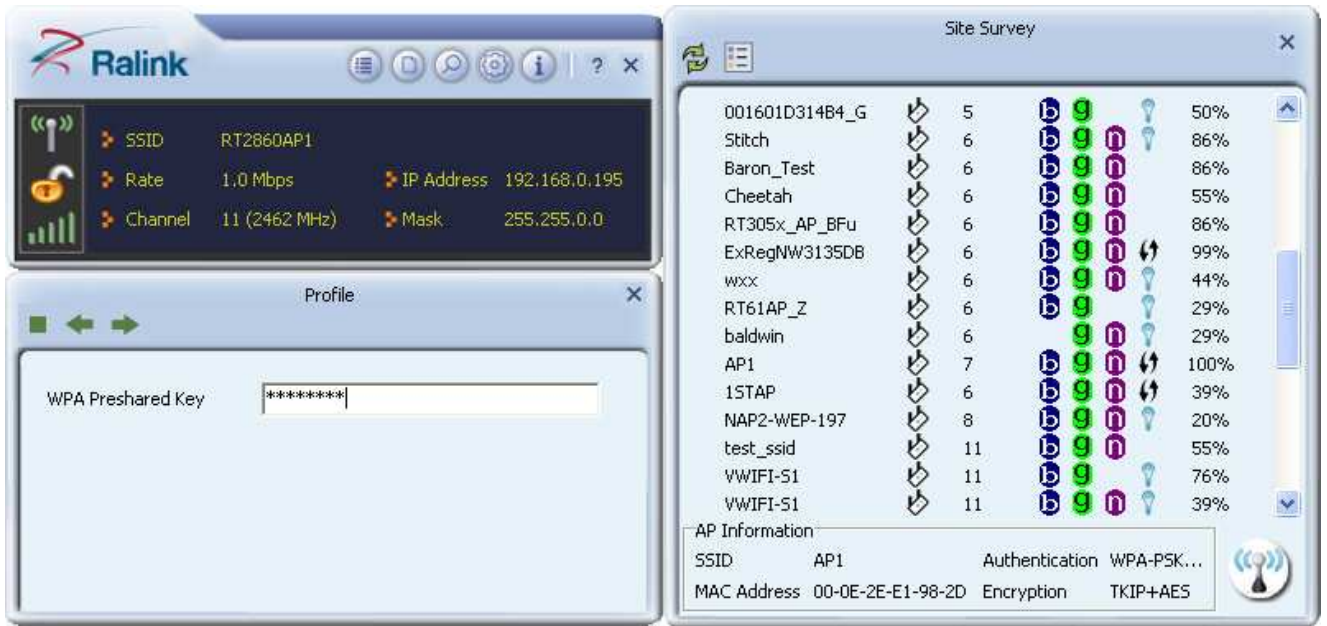
a. Select the AP and click “Connect” icon .



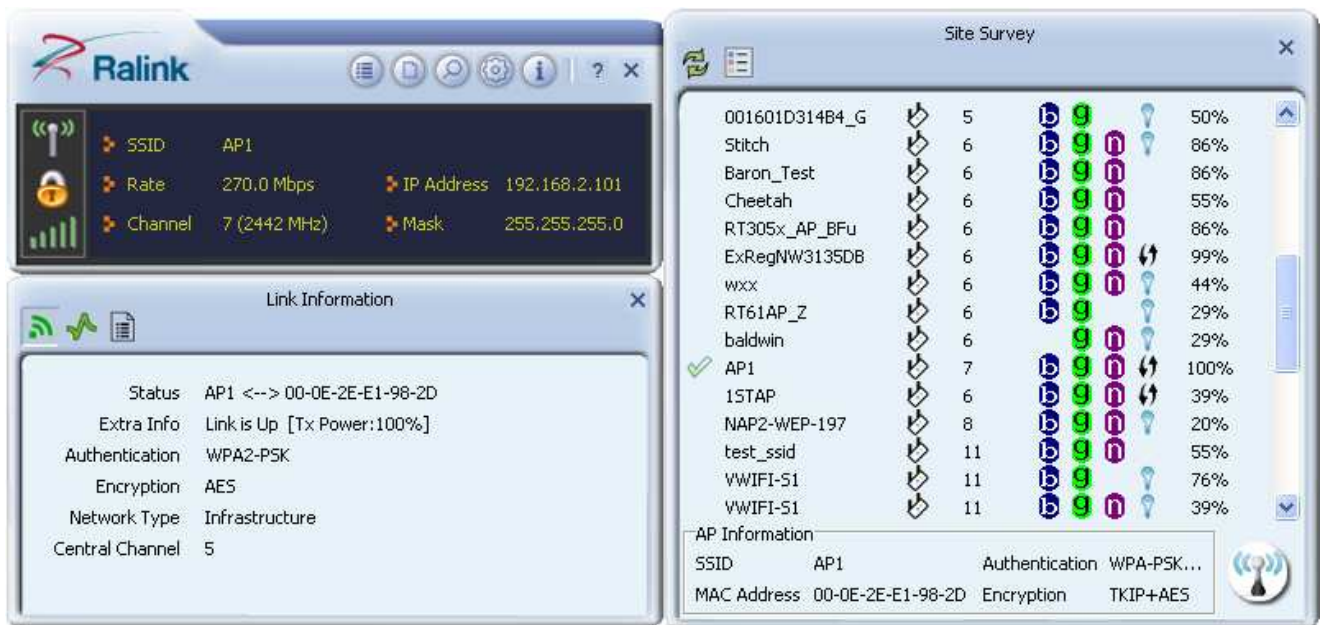
b. Authentication/Encryption function appears.




- c. Select WPA2-PSK as the Authentication Type. Select TKIP or AES encryption. Enter the WPA Pre-Shared Key.



- d. Click "OK". Be careful, if the WPA Pre-Shared Key entered is not correct, you won't be able to exchange any data frames, even though the AP can be connected.



4. At last, if you want to know more using method of RaUI, you could refer to the help file by click the question mark  at the top right corner of RaUI to open it.





WUBR-507N (M)

Feature

- Chipsets: Ralink RT3572
- Compliant with 802.11a/b/g/n Dual-Band standard
- Interface: 6-Pin or USB 2.0 Type A (optional)
- Antenna: 2 x U.FL connector
- Speeds up to 300Mbps
- Advanced security: 64/128-bits WEP, WPA, WPA2
- Support Windows 2000/ XP/ Win CE/ Vista/ Win7, Linux, MAC



802.11a/b/g/n USB Module

6-Pin or Type A Connection with Ralink RT3572, 2T2R

Latest 802.11n Wi-Fi Technology

SparkLAN WUBR-507N(M) is an 802.11n Wi-Fi USB module, which is backward compatible with 802.11a/b/g standard. With advanced 2T2R MIMO technology, WUBR-507N(M) delivers ultimate wireless data rate for up to 300Mbps. It is designed properly for any wireless enabled devices with standard 6-Pin connector USB Type A (optional).

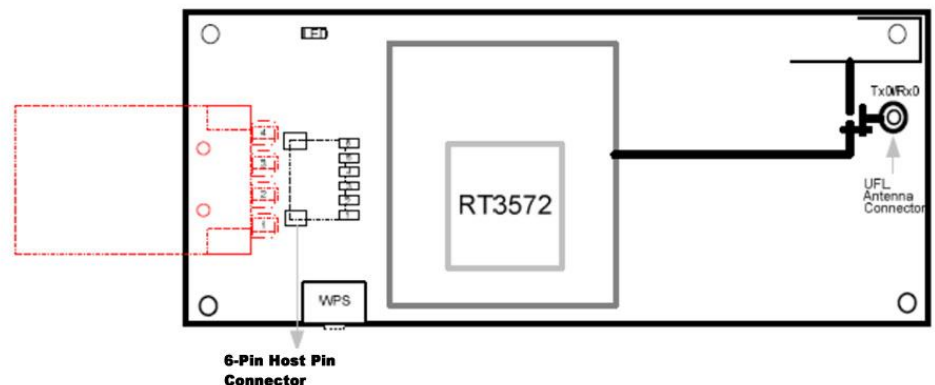
Secure Wireless Connection

WUBR-507N(M) also features advanced WEP encryption, WPA, and WPA2 to help to protect data over wireless communication without sacrificing the performance.

Application

- Networking Equipment
- USB Dongle
- Industrial Computers
- Medical Device
- POS (Point-of-Sale) System
- Self-Service KIOSK
- Gaming Machine
- Consumer Electronics

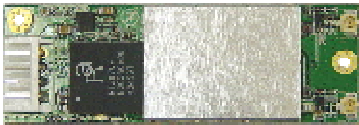
Mechanical Dimension (mm)



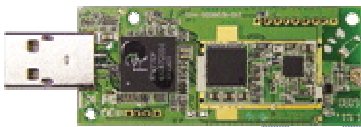
WUBR-507N (M)

Related Product

- WUBR-506N
802.11a/b/g/n dual band USB
Module



- WUBR-125GN
802.11b/g/n USB Module



Ordering Info

- WUBR-507N(M)
802.11a/b/g/n USB Module

WUBR-507N(M)	U.FL+6-Pin
WUBR-507N(MU)	U.FL+USB Type A
WUBR-507N(P)	Printed Antenna +USB Type A
WUBR-507N(P6)	Printed Antenna +6-Pin

Specifications

Standard

802.11a/b/g/n

Chipset

Mac/BB/RF Ralink RT3572

Host Interface

6-Pin Connector (Pin 1: v+, Pin 2: D-, Pin 3: D+, Pin 4: GND, Pin 5: LED, Pin 6: RF) or Type A (optional)

Radio

Antenna 2 x U.FL connector (2T2R)

Operating Frequency 802.11a ISM Band: 5.1 ~ 5.8GHz
802.11g ISM Band: 2.4 ~ 2.4835GHz

Modulation 802.11b: DSSS (DBPSK, DQPSK, CCK)
802.11g/g: OFDM (BPSK, QPSK, 16-QAM, 64-QAM)
802.11n: OFDM (BPSK, QPSK, 16-QAM, 64-QAM)

Output Power 802.11a: 11dBm ± 1.5dBm@54Mbps
802.11b: 16dBm ± 1.5dBm@11Mbps
802.11g: 13dBm ± 1.5dBm@54Mbps
802.11an HT20: 10dBm ± 1.5dBm 802.11an HT40: 10dBm ± 1.5dBm
802.11gn HT20: 12dBm ± 1.5dBm 802.11gn HT20: 12dBm ± 1.5dBm

Receive Sensitivity 802.11a: -72dBm ± 2dBm 802.11b: -86dBm ± 2dBm
802.11g: -72dBm ± 2dBm
802.11an HT20: -68dBm ± 2dBm 802.11an HT40: -65dBm ± 2dBm
802.11gn HT20: -68dBm ± 2dBm 802.11gn HT40: -65dBm ± 2dBm

Power consumption

Continue TX Max 400mA@2TX
Continue RX Max 250mA@2RX

Operating Voltage

DC 5V ± 10%

Environmental

Temperature Range 0 ~ 60°C (Operating) -20 ~ 70°C (Storing)
Humidity 5 ~ 90% (Operating) 5 ~ 95% (Storing)
(Non-Condensing)

Physical Specification

Dimensions 60mm X 25mm (±0.5mm)
Weight TBD

Software

Driver Windows 2000/XP/ WinCE/ Vista,/ Win7, Linux, MAC
Security 64/128-bits WEP, WPA, WPA2

Federal Communication Commission Interference Statement

This equipment has been tested and found to comply with the limits for a Class B digital device, pursuant to Part 15 of the FCC Rules. These limits are designed to provide reasonable protection against harmful interference in a residential installation. This equipment generates, uses and can radiate radio frequency energy and, if not installed and used in accordance with the instructions, may cause harmful interference to radio communications. However, there is no guarantee that interference will not occur in a particular installation. If this equipment does cause harmful interference to radio or television reception, which can be determined by turning the equipment off and on, the user is encouraged to try to correct the interference by one or more of the following measures:

- Reorient or relocate the receiving antenna.
- Increase the separation between the equipment and receiver.
- Connect the equipment into an outlet on a circuit different from that to which the receiver is connected.
- Consult the dealer or an experienced radio/TV technician for help.

FCC Caution : Any changes or modifications not expressly approved by the party responsible for compliance could void the user's authority to operate this equipment.

This device complies with Part 15 of the FCC Rules. Operation is subject to the following two conditions: (1) This device may not cause harmful interference, and (2) this device must accept any interference received, including interference that may cause undesired operation.

This device is restricted to indoor use.

FCC Radiation Exposure Statement:

This equipment complies with FCC radiation exposure limits set forth for an uncontrolled environment. This equipment should be installed and operated with minimum distance 20cm between the radiator & your body.

This module is intended for OEM integrator. The OEM integrator is still responsible for the FCC compliance requirement of the end product, which integrates this module.

20cm minimum distance has to be able to be maintained between the antenna and the users for the host this module is integrated into. Under such configuration, the FCC radiation exposure limits set forth for an population/uncontrolled environment can be satisfied.

Any changes or modifications not expressly approved by the manufacturer could void the user's authority to operate this equipment.

LABEL OF THE END PRODUCT:

The final end product must be labeled in a visible area with the following " Contains TX FCC ID: RYK-WUBR507N ".

If the size of the end product is larger than 8x10cm, then the following FCC part 15.19 statement has to also be available on the label: This device complies with Part 15 of FCC rules. Operation is subject to the following two conditions: (1) this device may not cause harmful interference and (2) this device must accept any interference received, including interference that may cause undesired operation.

This radio transmitter FCC ID: RYK-WUBR507N has been approved by Federal Communication Commission to operate with the antenna types listed below with the maximum permissible gain indicated. Antenna types not included in this list, having a gain greater than the maximum gain indicated for that type, are strictly prohibited for use with this device.

Ant.	Antenna Type	Model	Peak Gain (dBi)	
1	Dipole	C642-510049-A(SSR-12024)(X4)	2.4G	2
			5G	2
2	Printed	N/A	2.4G	1.78
			5G	3.33