



# **Go Wi-Fi!® P322/P322X 802.11a/b/g WLAN SDIO Card**

## **User's Guide**



## Copyright Notice

Copyright © 2009-2011 Socket Mobile, Inc. All rights reserved.

Socket, the Socket logo and Go Wi-Fi! are trademarks or registered trademarks of Socket Mobile, Inc. Wi-Fi® is a registered trademark of the Wi-Fi Alliance. All other brand and product names are trademarks of their respective holders.

Reproduction of the contents of this manual without the permission of Socket Mobile is expressly prohibited. Please be aware that the products described in this manual may change without notice.

Feel free to contact Socket Mobile at:

Socket Mobile, Inc.  
39700 Eureka Drive  
Newark, CA 94560-4808  
USA

Other than the above, Socket Mobile can assume no responsibility for anything resulting from the application of information contained in this manual. Please refrain from any applications of the Socket Mobile product that are not described in the user manual. Please refrain from disassembling the Socket Go Wi-Fi! P322 and P322X SDIO cards. Disassembly will void the product warranty.

You can track new product releases, software updates and technical bulletins by visiting the Socket Mobile website at: <http://www.socketmobile.com>.

# Table of Contents

Copyright Notice.....	2
1. Introduction.....	4
1.1 Key Features Supported.....	4
1.2 System Requirements.....	4
2. Installing the P322/P322X Driver .....	5
2.1 Installing the driver CAB file with a Memory Card .....	5
2.2 Installing the driver with Synchronization Software.....	5
3. Create Access Point Profile .....	7
4. Connect to the Access Point .....	10
5. Check IP Address after WLAN Connection.....	11
6. Technical Support.....	12
7. Limited Warranty .....	13
7.1 Limited Software Warranty .....	14
7.2 Disclaimer .....	14
8. Regulatory Compliance.....	16
8.1 English.....	16
8.2 Français .....	17

# 1. Introduction

Thank you for purchasing the Socket Go Wi-Fi! P322/P322X 802.11a/b/g SDIO WLAN card. This User's Guide provides instructions for using the P322/P322X driver on ARMV4I processor based handheld devices running the Windows Mobile 5 or 6 operating system.

## 1.1 Key Features Supported

The provided Go Wi-Fi! P322/P322X driver has the following features and security protocols:

- Supports 802.11a/b/g
- Works with Microsoft Wireless Zero Config (WZC) software
- Supports Windows Mobile 5.0 for Pocket PC or Windows Mobile 6 Classic
- Supports ARMV4I processor type
- Supports WEP 64/128-bit encryption
- Supports WPA/WPA2 – pre-shared key (PSK) and enterprise versions, which support TKIP and AES-CCMP encryption types

## 1.2 System Requirements

Mobile devices with:

- Windows Mobile 5.0 for Pocket PC or Windows Mobile 6 Classic
- ARMV4I processor type
- SDIO slot

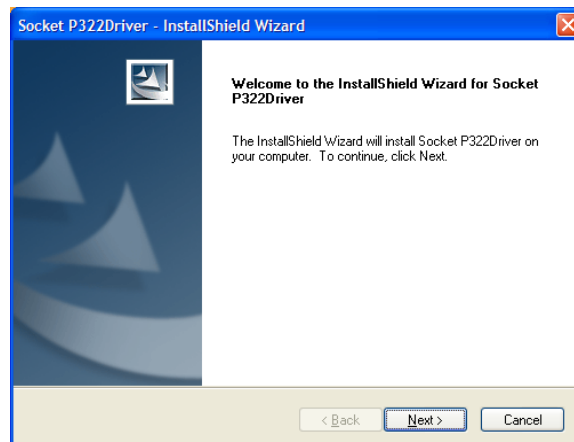
## 2. Installing the P322/P322X Driver

### 2.1 Installing the driver CAB file with a Memory Card

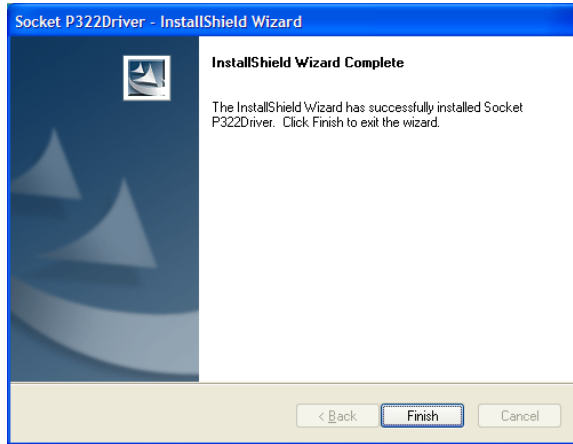
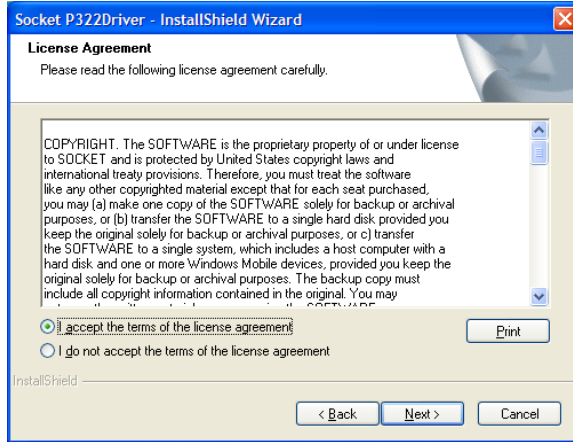
1. Copy the driver CAB file from the Driver CD onto a memory card. Alternatively, download the driver CAB file online from:  
<http://www.socketmobile.com/support/downloads/>
2. Insert the memory card into the device.
3. Use File Explorer to copy the CAB file to the device, then navigate to the CAB file
4. Tap on the CAB file to install it. Follow the instructions to complete the installation

### 2.2 Installing the driver with Synchronization Software

1. Use a serial/USB connection cable or cradle to make an active connection between your device and a host PC
  - If your host computer is running Windows 7 or Vista, use the Windows Mobile Device Center. Download it from the Microsoft website
  - If your host computer is running Windows 2000/XP,
    - Use ActiveSync 4.5 or greater for Windows Mobile 6
    - Use ActiveSync 4.0 or greater for Windows Mobile 5.0
2. Insert the Driver CD into your host PC. Alternatively, download the driver EXE file online and save on the local PC
3. Use **My Computer** or **Windows Explorer** to access the CD-ROM drive or the local PC drive.
4. Click on the Socket\_P322\_x.x.x.x.exe (e.g.: Socket\_P322\_4.0.2.0.exe for the driver version 4.0.2.0). It will launch the InstallShield Wizard as below.

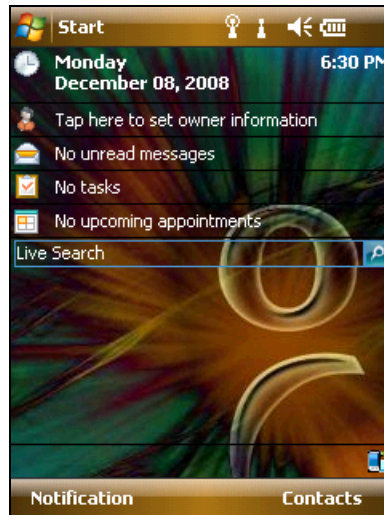


5. Follow the InstallShield Wizard to complete the driver installation

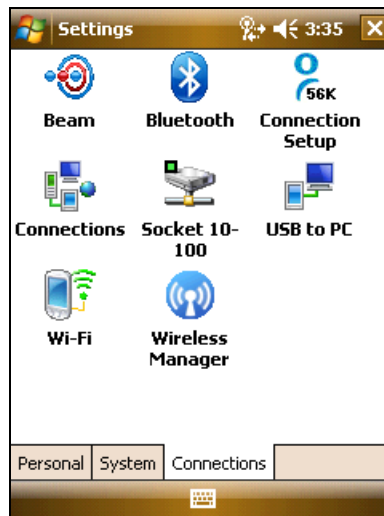


### 3. Create Access Point Profile

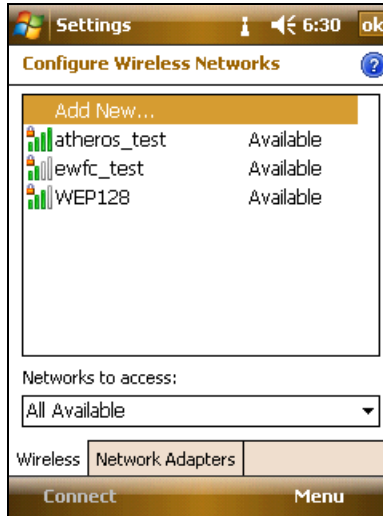
1. Insert the Go Wi-Fi! P322/P322X card into the SDIO slot of your device. Once the WLAN card is initialized and the driver is loaded, a radio tower icon shows up at the top bar.



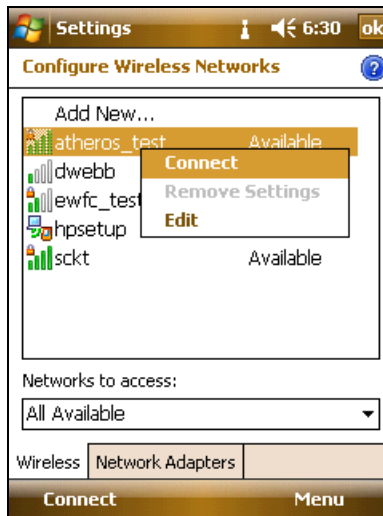
2. Tap on the tower icon, then on the "Settings" on the pop-up Connectivity window, it will take you to the following screen.



3. Click on "Wi-Fi", it will show the list of the available WLAN access points.



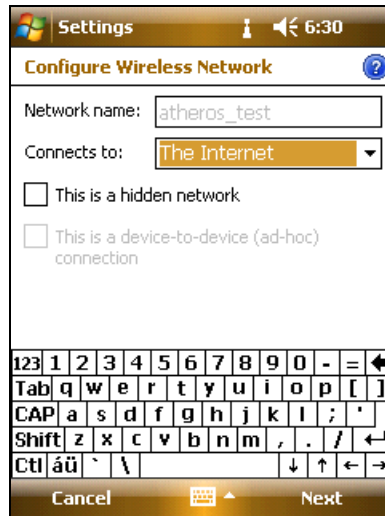
4. Select the access point that you want to connect to (in this example: "atheros\_test"). Click on the menu item "Connect". If it is the first time connecting to this access point, it will create a new profile. Otherwise, it will start the WLAN connection



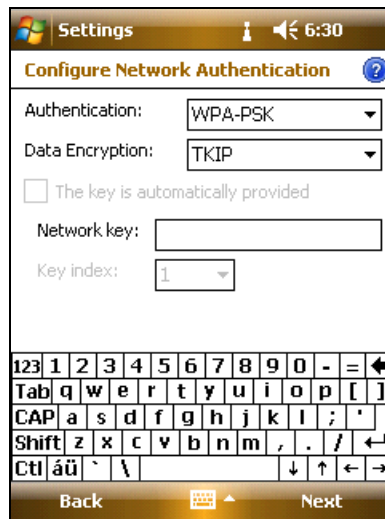


5. If it is the first time connecting to the access point, it will bring you to the following profile creation screens.

At the first screen, you can enter "Network name". The access point name is used as the default network name. Follow the "Next" soft key to move to the next screen.

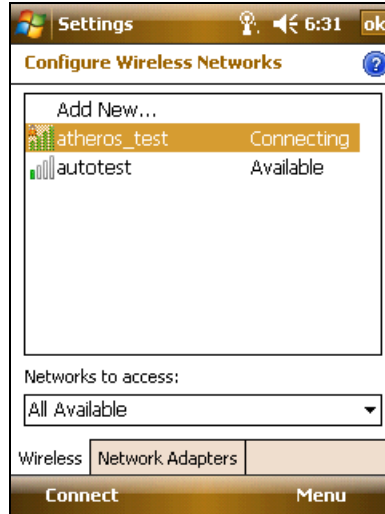


6. Next, select the authentication and encryption methods corresponding to the selected access point. Then, enter the right network key. Follow the "Next" soft key to move to the next screen until "Finish" to complete the profile creation.

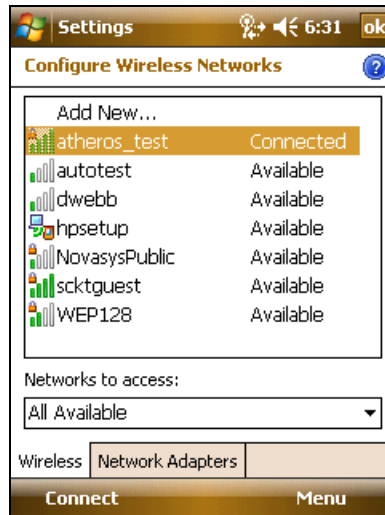


## 4. Connect to the Access Point

1. Once you finish the profile creation or you clicked "Connect" on an access point with profile already created, the PDA starts to try connecting to the WLAN access point you selected.

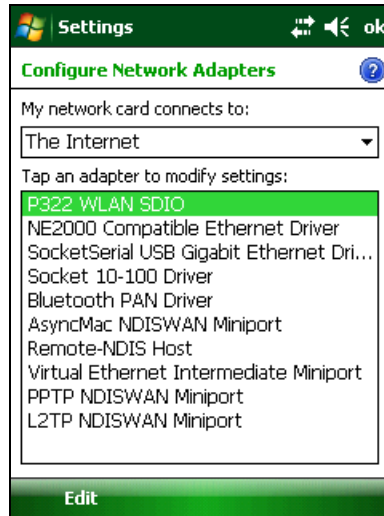


2. The screen below shows that the device is connected to the access point.



## 5. Check IP Address after WLAN Connection

You can check the IP address assigned to the device by going to the “Network Adapters” tab and select the “P322 WLAN SDIO” entry.



You can check the network connectivity by pinging this IP address from a network computer.

## 6. Technical Support

Socket has two technical support resources to help you. Please note that support is available only in English.

Online Knowledge Base: Search for articles, Frequently Asked Questions or Hot Topics 24 hours a day. [http://support.socketmobile.com/EU\\_S1a.asp](http://support.socketmobile.com/EU_S1a.asp)

Online Requests: Register your product and submit a question to our Technical Support team. <http://support.socketmobile.com>

### By Phone:

- Direct: +1-510-933-3020
- USA & Canada Toll-free: 800-279-1390
- Europe: +49 9401 5299 036

## 7. Limited Warranty

Socket Mobile Incorporated (Socket) warrants this product against defects in material and workmanship, under normal use and service, for one (1) year from the date of purchase. Product must be purchased new from a Socket Mobile Authorized Distributor or Reseller. Products purchased through non-authorized channels are not eligible for this warranty support.

*EXCLUDES: Consumables such as batteries, removable cables, cases, straps, stylus, memory cards, chargers and CF-to-PC Card adapters (90 day coverage only)*

Incompatibility is not a defect covered by the Socket warranty. During the warranty period, Socket will, at its option, repair or replace the defective product at no charge when furnished with proof of retail purchase, provided that you deliver the product to Socket or to an authorized Socket Service Center.

The returned product must be accompanied by a return material authorization (RMA) number issued by Socket or by a Socket Service Center. If you ship the product, you must use the original container or equivalent and you must pay the shipping charges to Socket. Socket will pay surface shipping charges back to any location in the contiguous United States. This warranty applies only to the original retail purchaser and is not transferable.

Socket may, at its option, replace or repair the product with new or reconditioned parts and the returned product becomes property of Socket. Socket warrants the repaired or replaced products to be free from defects in material or workmanship for ninety (90) days after the return shipping date, or for the remainder of the original warranty period, whichever is greater.

This warranty does not cover the repair or replacement of products damaged by abuse, accident, lost products, use beyond Socket's published specifications, liquid immersion, misuse or misapplication, damages caused by an act of God, nor as a result of service or modification other than by Socket unless specifically described by Socket in product documentation. This warranty does not provide coverage for any product updates, for example updates due to design changes, except as deemed necessary by Socket and does not cover any calibration or adjustments necessary for product functionality. This warranty does not cover refurbishing cosmetic damages such as scratched paint, cases or LED screens. This warranty is void if you install batteries into the product that were not supplied by Socket.

SOCKET MOBILE IS NOT RESPONSIBLE FOR INCIDENTAL OR CONSEQUENTIAL DAMAGES RESULTING FROM BREACH OF ANY EXPRESS OR IMPLIED WARRANTY, INCLUDING DAMAGE TO PROPERTY AND, TO THE EXTENT PERMITTED BY LAW, DAMAGES FOR PERSONAL INJURY. THIS WARRANTY IS IN LIEU OF ALL OTHER WARRANTIES INCLUDING IMPLIED WARRANTIES OF MERCHANTABILITY AND FITNESS FOR A PARTICULAR PURPOSE.

Some states do not allow limitation of implied warranties, or the exclusion or limitation of incidental or consequential damages, so that the above limitations or exclusions may not apply to you. This warranty gives you specific legal rights and you may also have other rights which vary from state to state.

This product may contain fully tested, recycled parts, warranted as if new.

For warranty information, please visit: <http://support.socketmobile.com>

## **7.1 Limited Software Warranty**

**LIMITED WARRANTY.** Socket Mobile, Inc. (Socket) warrants that the original disk or CD ROM is free from defects for 90 days from the date of delivery of the SOFTWARE.

**CUSTOMER REMEDIES.** The entire liability of Socket and your exclusive remedy shall be, at the option of Socket, either (a) return of the price paid or (b) replacement of the SOFTWARE which does not meet the Socket Limited Warranty and which is returned to Socket with a copy of your receipt. Any replacement SOFTWARE will be warranted for the remainder of the original warranty period or 30 days, whichever is longer. THESE REMEDIES ARE NOT AVAILABLE OUTSIDE OF THE UNITED STATES OF AMERICA.

**NO OTHER WARRANTIES.** Socket disclaims all other warranties, either express or implied, including but not limited to implied warranties of merchantability and fitness for a particular purpose, with respect to the SOFTWARE and the accompanying written materials. This limited warranty gives you specific legal rights. You may have others which vary from state to state.

**NO LIABILITY FOR CONSEQUENTIAL DAMAGES.** In no event shall Socket or its suppliers be liable for any damages whatsoever (including, without limitation, damages for loss of business profits, business interruption, loss of business information, or other pecuniary loss) arising out of the use of or inability to use the SOFTWARE, even if Socket has been advised of the possibility of such damages. Because some states do not allow the exclusion or limitation of liability for consequential or incidental damages, the above limitation may not apply to you.

**EXPORT LAW ASSURANCES.** You may not use or otherwise export or reexport the SOFTWARE except as authorized by United States law and laws of the jurisdiction in which the SOFTWARE was obtained. In particular, but without limitation, none of the SOFTWARE may be used or otherwise exported or reexported (a) into (or to a national or resident of) a United States embargoed country or (b) to anyone on the U.S. Treasury Department's list of Specially Designated Nationals or the U.S. Department of Commerce's Table of Denial Orders. By using the SOFTWARE, you represent and warrant that you are not located in, under control of, or a national or resident of any such country or on any such list.

**GOVERNMENT END USERS.** If the SOFTWARE is supplied to the U. S. Government, the SOFTWARE is classified as "restricted computer software" as defined in clause 52.227-19 of the FAR. The U. S. Government 's rights to the SOFTWARE are as provided in clause 52.227-19 of the FAR.

**CONTROLLING LAW AND SEVERABILITY.** This License shall be governed by the laws of the United States and the State of California. If for any reason a court of competent jurisdiction finds any provision, or portion thereof, to be unenforceable, the remainder of this License shall continue in full force and effect.

## **7.2 Disclaimer**

EXCEPT TO THE EXTENT EXPRESSLY WARRANTED BY SOCKET MOBILE, INC, THIS PRODUCT IS PROVIDED "AS IS" WITHOUT WARRANTY OF ANY KIND, EXPRESS OR IMPLIED, INCLUDING WITHOUT LIMITATION, THE IMPLIED WARRANTIES OF MERCHANTABILITY OR FITNESS FOR A PARTICULAR PURPOSE. EXCEPT TO THE EXTENT REQUIRED BY LAW, SOCKET MOBILE DOES NOT ASSUME ANY PRODUCT LIABILITY ARISING OUT OF, OR IN CONNECTION WITH, THE APPLICATION OR USE OF ANY PRODUCT OR APPLICATION DESCRIBED HEREIN.

PORTIONS OF THIS SOFTWARE ARE PROVIDED BY THEOPENSSL PROJECT OR ERIC YOUNG "AS IS" AND ANY EXPRESSED OR IMPLIED WARRANTIES, INCLUDING, BUT NOT LIMITED TO, THE IMPLIED WARRANTIES OF MERCHANTABILITY AND FITNESS FOR A PARTICULAR PURPOSE ARE DISCLAIMED. IN NO EVENT SHALL THE OPENSSL PROJECT, ERIC YOUNG OR CONTRIBUTORS BE LIABLE FOR ANY DIRECT, INDIRECT, INCIDENTAL, SPECIAL, EXEMPLARY, OR CONSEQUENTIAL DAMAGES (INCLUDING, BUT NOT LIMITED TO, PROCUREMENT OF SUBSTITUTE GOODS OR SERVICES; LOSS OF USE, DATA OR PROFITS; OR BUSINESS INTERRUPTION) HOWEVER CAUSED AND ON ANY THEORY OF LIABILITY, WHETHER IN CONTRACT, STRICT LIABILITY, OR TORT (INCLUDING NEGLIGENCE OR OTHERWISE) ARISING IN ANY WAY OUT OF THE USE OF THIS SOFTWARE, EVEN IF ADVISED OF THE POSSIBILITY OF SUCH DAMAGE.

## 8. Regulatory Compliance

### 8.1 English

Go Wi-Fi! cards are designed to be compliant with the rules and regulations in locations where they are sold and will be labeled as required. This product is type approved and users are not required to obtain license or authorization before using.

#### USA

- FCC Part 15 Subpart B Class B Section 15.107, 15.109
- FCC Part 15 Subpart C Section 15.207, 15.247
- FCC Part 15 Subpart E Section 15.207, 15.209, 15.407
- FCC Procedure ANSI C63.4 (2003)
- FCC SAR OET65

#### Canada

- IC RSS-210

#### Europe

- CE EN 300 328, EN 301 489, EN 301 893, EN 62311, EN 60950
- Emissions Compliance: CE SAR Gap: 1 cm

#### Japan

- TELEC STD-T33, STD-T66, STD-T71 (W52, W53, W56)

This product is in compliance with the EU Directive 2002/95/EC for Restriction of Hazardous Substances (RoHS).

#### 8.1.1 Federal Communications Commission Interference Statement

This equipment has been tested and found to comply with the limits for a Class B digital device, pursuant to Part 15 of the FCC Rules. These limits are designed to provide reasonable protection against harmful interference in a residential installation. This equipment generates uses and can radiate radio frequency energy and, if not installed and used in accordance with the instructions, may cause harmful interference to radio communications. However, there is no guarantee that interference will not occur in a particular installation. If this equipment does cause harmful interference to radio or television reception, which can be determined by turning the equipment off and on, the user is encouraged to try to correct the interference by one of the following measures:

- Reorient or relocate the receiving antenna.
- Increase the separation between the equipment and receiver.
- Connect the equipment into an outlet on a circuit different from that to which the receiver is connected.
- Consult the dealer or an experienced radio/TV technician for help.

FCC Caution: Any changes or modifications not expressly approved by the party responsible for compliance could void the user's authority to operate this equipment.

This equipment complies with Part 15 of the FCC Rules. Operation is subject to the following two conditions: (1) This device may not cause harmful interference, and (2) this device must accept any interference received, including interference that may cause undesired operation.



The equipment complies with FCC RF radiation exposure limits set forth for an uncontrolled environment, under 47 CFR 2.1093 paragraph (d)(2).

**IMPORTANT NOTE: Federal Communications Commission (FCC) Radiation Exposure Statement**

This EUT is compliant with SAR for general population / uncontrolled exposure limits in ANSI / IEEE C95.1-1999 and has been tested in accordance with the measurement methods and procedures specified in OET Bulletin 65 Supplement C. This equipment should be installed and operated with a minimum distance of 0.5 cm between the radiator and your body.

**8.1.2 Industry Canada Interference Statement and SAR Warning**

This device complies with Industry Canada license-exempt RSS standard(s). Operation is subject to the following two conditions: (1) this device may not cause interference, and (2) this device must accept any interference, including interference that may cause undesired operation of the device.

**SAR Warning:** This device complies with the requirements of Health Canada Safety Code 6 for Canada. Testing was performed on PDA devices with antennas at Body (0.5 cm Gap) spacing. The maximum SAR value is: 0.715W/kg. The device must not be collocated with any other antennas or transmitters.

**8.1.3 Product Disposal**

This product should not be placed in municipal waste. Please check local regulations for disposal of electronic products.



**8.2 Français**

Les cartes Go Wi-Fi! sont conçues pour se conformer aux lois et réglementations des lieux où elles sont vendues et portent les étiquettes requises. Ces cartes SD sont homologues et l'utilisateur n'a donc pas besoin d'obtenir une licence ou une autorisation avant de les utiliser.

**USA**

- FCC Part 15 Subpart B Class B Section 15.107, 15.109
- FCC Part 15 Subpart C Section 15.207, 15.247
- FCC Part 15 Subpart E Section 15.207, 15.209, 15.407
- FCC Procedure ANSI C63.4 (2003)
- FCC SAR OET65

**Canada**

- IC RSS-210

**Europe**

- CE EN 300 328, EN 301 489, EN 301 893, EN 62311, EN 60950
- Conforme aux Standards Emissions: CE SAR, Ecart : 1 cm

**Japan**

- TELEC STD-T33, STD-T66, STD-T71 (W52, W53, W56)

Ce produit respecte la directive de l'EU 2002/95/EC relative à la restriction de l'utilisation de substances dangereuses (RoHS).

### **8.2.1 Déclaration d'interférence de la FCC**

Ce matériel a été contrôlé et correspond aux limites imposées pour les dispositifs numériques de classe B, conformément à la section 15 des règlements FCC. Ces limites sont destinées à assurer une protection suffisante contre les interférences nuisibles dans un milieu résidentiel. Ce matériel génère, utilise et peut émettre des fréquences radio, et, s'il n'est pas installé, ni utilisé conformément aux instructions, peut provoquer des interférences nuisibles dans les communications radio. Il n'existe cependant aucune garantie assurant qu'aucune interférence ne se produira pour une installation particulière. Si ce matériel produit des interférences nuisibles à une réception radio ou télévision, ce que vous pouvez déterminer en mettant le matériel sous tension et hors tension, nous recommandons à l'utilisateur d'essayer de rectifier cette interférence en suivant l'une ou plusieurs des options suivantes :

- Tournez l'antenne dans une autre direction ou déplacez-la.
- Augmentez la séparation entre le matériel et le récepteur.
- Branchez le matériel dans la prise d'un circuit différent de celui dans lequel est branché le récepteur.
- Consultez le revendeur ou demandez l'aide d'un technicien radio/télévision expérimenté.

Avis de la FCC: La réglementation de la FCC exige que l'utilisateur soit averti que toute modification apportée à la présente carte SD non approuvée explicitement par le parti responsable de la conformité, est de nature à lui interdire l'usage de cette carte. La carte SD est conforme à l'article 15 de la réglementation FCC. Son utilisation est sujette aux deux conditions suivantes (1) Cette carte SD ne doit pas provoquer d'interférences nuisibles, et (2) cette carte SD doit accepter toute interférence reçue, y compris les interférences susceptibles de provoquer un fonctionnement non souhaité.

La carte SD est conçue pour être conforme aux directives de la FCC sur les limites d'exposition humaine aux radiofréquences (RF) sous environnement portatif, titre 47 CFR 2.1093 paragraphe (d)(2).

### **8.2.2 Déclaration d'interférence de la IC**

Ce dispositif est conforme aux normes CNR exemptes de licence d'Industrie Canada. Le fonctionnement de ce dispositif est autorisé sous réserve des deux conditions suivantes : (1) il ne doit pas produire de brouillage et (2) l'utilisateur du dispositif doit être prêt à accepter tout brouillage radioélectrique reçu même si ce brouillage est susceptible de compromettre le fonctionnement du dispositif.

Cet appareil est conforme avec Santé Canada Code de sécurité 6. La valeur SAR de est de 0,715 W/kg max.

### **8.2.3 Élimination des produits usagés:**

Votre produit ne doit pas être jeté dans une décharge municipale. Veuillez consulter la réglementation locale concernant la mise au rebut de produits électroniques.

