

# Wireless Network Adapter

## User's Manual

**Federal Communications Commission (FCC) Requirements, Part 15**

This equipment has been tested and found to comply with the limits for a class B digital device, pursuant to part 15 of the FCC Rules. These limits are designed to provide reasonable protection against harmful interference in a residential installation.

This equipment generates, uses and can radiate radio frequency energy and, if not installed and used in accordance with the instructions, may cause harmful interference to radio communications. However, there is no guarantee that interference will not occur in a particular installation. If this equipment does cause harmful interference to radio or television reception, which can be determined by turning the equipment off and on, the user is encouraged to try to correct the interference by one or more of the following measures:

- Reorient or relocate the receiving antenna.
- Increase the separation between the equipment and receiver.
- Connect the equipment into an outlet on a circuit different from that to which the receiver is connected.
- Consult the dealer or an experienced radio/TV technician for help.

**Regulatory information / Disclaimers**

Changes or modifications not expressly approved by the party responsible for compliance could void the user's authority to operate the equipment.

<p>This device complies with Part 15 of the FCC Rules. Operation is subject to the following two conditions: (1) This device may not cause harmful interference. (2) This device must accept any interference received, including interference that may cause undesired operation.</p>
--

**IMPORTANT NOTE (CO-LOCATION)**

FCC RF Radiation Exposure Statement: This equipment complies with FCC RF radiation exposure limits set forth for an uncontrolled environment. This device and its antenna must not be co-located or operating in conjunction with any other antenna or transmitter.

## Table of Contents

<b>Chapter 1 Introduction</b> .....	<b>3</b>
1.1 Welcome .....	3
1.2 About This Guide .....	3
1.3 Copyright statement.....	3
1.4 Contents of Package.....	3
1.5 Before you begin.....	4
<b>Chapter 2 Designing Your Wireless Network</b> .....	<b>4</b>
<b>Chapter 3 Install Wireless Adapter</b> .....	<b>4</b>
3.1 Install Adapter .....	4
3.2 Configuration your wireless adapter .....	6
<b>Chapter 4 Troubleshooting</b> .....	<b>7</b>
<b>APPENDIX A Specifications</b> .....	<b>8</b>

# Chapter 1 Introduction

## 1.1 Welcome

The Wireless Network Adapter is a powerful 32-bit USB Adapter that installs quickly and easily into PCs. The Adapter can be used in Ad-Hoc mode to connect directly with other cards for peer-to-peer file sharing or in Infrastructure mode to connect with a wireless access point or router for access to the Internet in your office or home network.

The Wireless USB Adapter connects you with 802.11g networks at up to an incredible 54Mbps and for added versatility, it can also interoperate with all the up to 11Mbps 802.11b products found in homes, businesses, and public wireless hotspots around the country. And in either mode, your wireless communications are protected by industrial-strength WPA, so your data stays secure.

## 1.2 About This Guide

This User Manual contains information on how to install and configure your Wireless Adapter to get your network started accessing the Internet. It will guide you through the correct configuration steps to get your device up and running.

## 1.3 Copyright statement

No part of this publication may be reproduced, stored in a retrieval system, or transmitted in any form or by any means, whether electronic, mechanical, photocopying, recording, or otherwise without the prior writing of the publisher.

## 1.4 Contents of Package

- Wireless network USB adapter
- Manual, Drivers

If any of the above items are missing, please contact your reseller.

## 1.5 Before you begin

You must have at least the following:

- A laptop computer/desktop PC with an available USB slot
- At least a 300MHz processor and 32MB of memory
- Windows 2000, XP
- USB controller properly installed and working in the laptop computer
- A 802.11g or 802.11b Access Point (for infrastructure Mode) or another 802.11g or 802.11b wireless adapter (for Ad-Hoc; Peer-to-Peer networking mode.)

## Chapter 2 Designing Your Wireless Network

The wireless USB Adapter supports up to 54 Mbps connections. This card is fully compliant with the specifications defined in IEEE802.11g standard. It is designed to complement USB Local Bus computers and supports Windows /2000/XP.

The status LED indicators of the USB wireless adapter are described in the following.

- Lnk/Act ON (Green): Indicates a valid connection
- Lnk/Act Flashing: Indicates the Adapter is transmitting or receiving data.

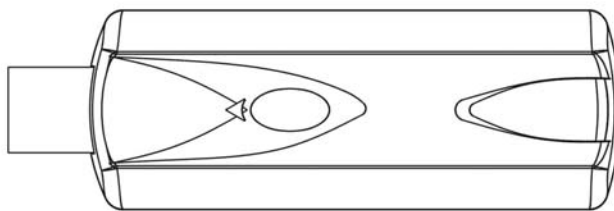


Figure 2-3

## Chapter 3 Install Wireless Adapter

### 3.1 Install Adapter

- Power on your PC, let the operating system boot up completely and log in as

needed.

- Hold the adapter and insert it into a USB slot.



Figure 3-1

- If the Found New Hardware Wizard displays, choose **Install the software automatically (Recommended)**, and click **Next** button. The driver will be installed automatically.



Figure 3-2

You have now completed the driver and hardware installation for the Adapter.

## 3.2 Configuration your wireless adapter

- Now right-click on this icon, and then select the “View Available Wireless Networks”



Figure 4-1

- The Wireless LAN Configuration screen will appear automatically. So, choose one of the “Available wireless networks” one this list, and configure the “network key” for your computer. At last, click “Connect” button.

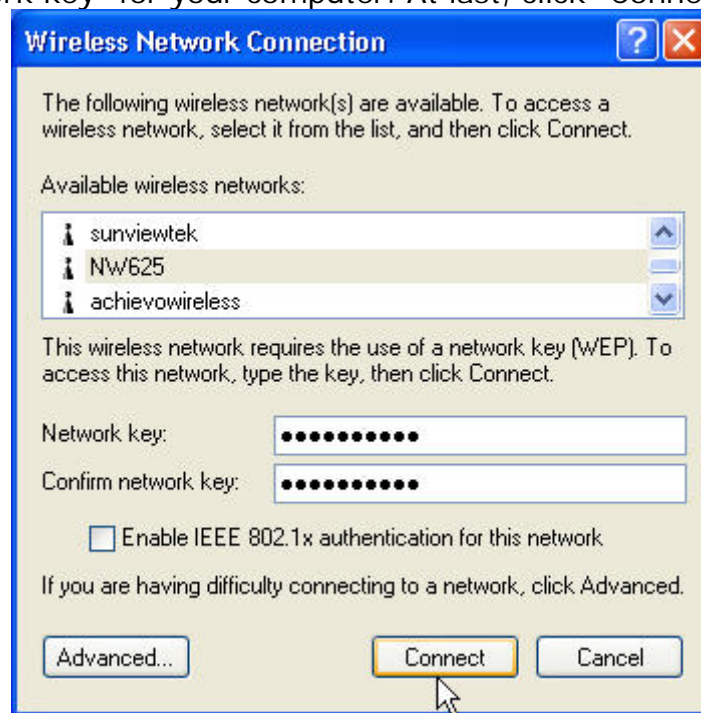


Figure 4-2



**NOTE:**

If the password of “wireless network ” you selected is empty, you should fill nothing in “Network key”

- Configuration completed, you will see this screen .

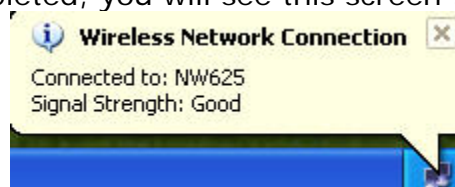


Figure 4-3

## Chapter 4 Troubleshooting

This chapter provides solutions to problems that may occur during the installation and operation of the Wireless USB Adapter. Read the descriptions below to solve your problems.

### **1. The Wireless USB Adapter does not work properly.**

Reinsert the Wireless USB Adapter into your PC's USB slot.

Right click on My Computer and select Properties. Select the device manager and click on the Network Adapter. You will find the Adapter if it is installed successfully. If you see the yellow exclamation mark, the resources are conflicting. You will see the status of the Adapter. If there is a yellow question mark, please check the following:

Make sure that your PC has a free IRQ (Interrupt ReQuest, a hardware interrupt on a PC.)

Make sure that you have inserted the right adapter and installed the proper driver. If the Adapter does not function after attempting the above steps, remove the adapter and do the following:

Uninstall the driver software from your PC.

Restart your PC and repeat the hardware and software installation as specified in this User Guide.

### **2. I cannot communicate with the other computers linked via Ethernet in the Infrastructure configuration.**

Make sure that the PC to which the Adapter is associated is powered on.

Make sure that your Adapter is configured on the same channel and with the same security options as with the other computers in the Infrastructure configuration.

### **3. What should I do when the computer with the Adapter installed is unable to connect to the wireless network and/or the Internet?**

Check that the LED indicators for the broadband modem are indicating normal activity. If not, there may be a problem with the broadband connection.

Check that the LED indicators on the wireless router are functioning properly. If not, check that the AC power and Ethernet cables are firmly connected.

Check that the IP address, subnet mask, gateway, and DNS settings are correctly entered for the network.

In Infrastructure mode, make sure the same Service Set Identifier (SSID) is specified on the settings for the wireless clients and access points.

In Ad-Hoc mode, both wireless clients will need to have the same SSID. Please note that it might be necessary to set up one client to establish a BSS (Basic Service Set) and wait briefly before setting up other clients. This prevents several clients from trying to establish a BSS at the same time, which can result in multiple singular BSS being established, rather than a single BSS



with multiple clients associated to it.

Check that the Network Connection for the wireless client is configured properly.

If Security is enabled, make sure that the correct encryption keys are entered on both the Adapter and the access point.

## APPENDIX A Specifications

**Standards:** IEEE 802.11g, IEEE 802.11b

**Modulation:** 802.11b: CCK (11 Mbps), DQPSK (2 Mbps), DBPSK (1 Mbps); 802.11g: OFDM

**Channels:**

11 Channels (USA)

13 Channels (Europe)

**Network Protocol:** TCP/IP, IPX, NDIS 4, NDIS 5, NDIS 5.1, NetBEUI

**Interface:** USB

**Transmit Power:** 15 dBm

**Sensitivity:** -80 dBm

**LED:** PWR, LNK/ACT

**WEP Key Bits:** 64-Bit and 128-Bit

**Dimensions:** 85.5×28×10mm

**Unit Weight:** 15g

**Power:** 5V

**Certifications:** FCC CE

**Operating Temp.:** 0°C to 40°C

**Storage Temp.:** -20°C to 70° C

**Operating Humidity:** 10% to 85%, Non-Condensing

**Storage Humidity:** 5% to 90%, Non-Condensing