

## 802.11B 11Mbps Wireless PCMCIA

### Quick setup in Windows 98

#### Install Driver

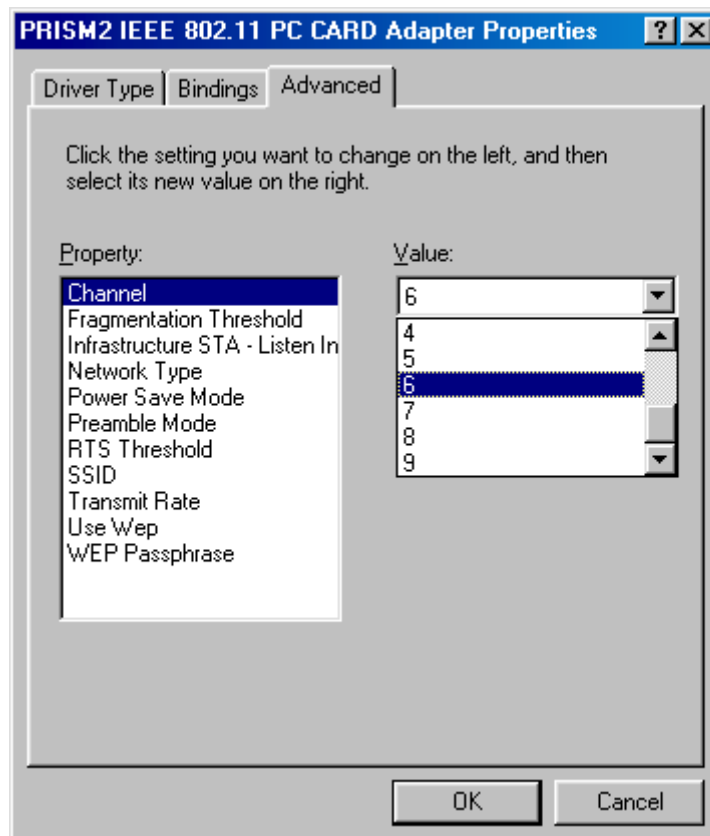
- Insert the Wireless PCMCIA into the slot
- Windows98 automatically detects a new device added.
- Follow Windows 98 instructions to do the installation. Please use the driver provided on the Driver CD.

#### Configure the Wireless PCMCIA

There are two ways to do the configurations. One is to use the Utility software. The other is to use the Wireless PCMCIA property dialog.

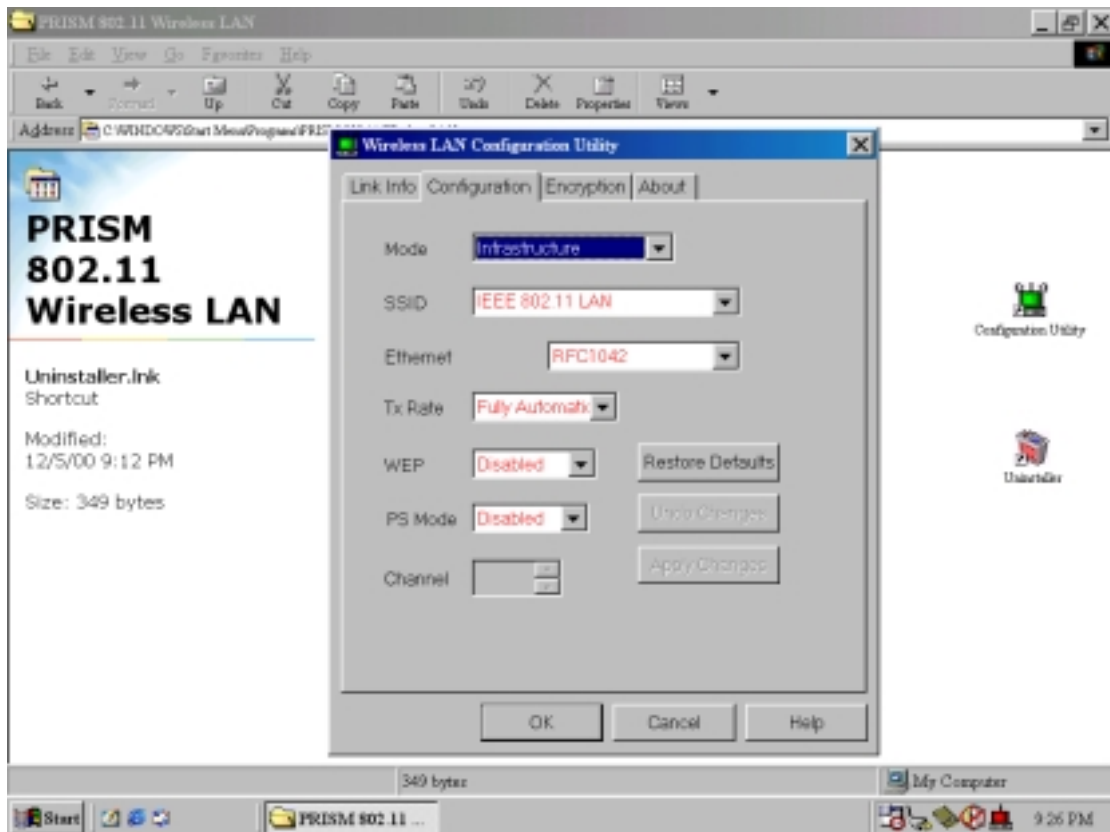
(1) Configuration via the Properties of the Wireless PCMCIA adapter:

- Click **Start**, point to **Settings**, and then click **Control Panel**.
- Double click **Network** icon, point to the Wireless PCMCIA adapter, and then click **Properties**.
- IEEE 802.11 Properties dialog shows. User can use it to do the configuration like channel, SSID, transmit rate.. and so on.



(2) Configuration via utility software:

- Find the setup.exe program in the Utility directory of the CD
- Execute Utility setup software.
- Once setup is complete, run the utility program by double-clicking the “Configuration Utility” icon.
- An Utility icon will show at right corner on the screen. Click this icon to prompt the configuration dialog. Users can do the configuration on this dialog.



**Technical Specification:**

Standard Compliant	IEEE 802.11b Standard
Data Transmission Rate	11/5.5/2/1Mbps
Security	Wired Equivalent Privacy (WEP) data encryption for security
Frequency Band	2.4GHz ISM frequency band 2400-2483.5MHz for US, Canada 2400~2497MHz for Japan and ETSI
Wireless Medium	Direct Sequence Spread Spectrum (DSSS)
Modulation Technique	<a href="#">DBPSK@1Mbps</a> <a href="#">DQPSK@2Mbps</a> <a href="#">CCK@5.5</a> and 11Mbps
Operating Channels	11 channels for US and Canada 13 channels for ETSI 14 channels for Japan
Operating Range (Typical)	Outdoor environment: 1Mbps – 1000 feet (305 meters) 2Mbps – 750 feet (228 meters) 5.5Mbps – 600 feet (183 meters) 11Mbps – 400 feet (122 meters) Indoor environment 1Mbps – 300 feet (91 meters) 2Mbps – 240 feet (73 meters) 5.5Mbps – 200 feet (61 meters) 11Mbps – 120 feet (37 meters)
Antenna	Built-in dual diversity antenna
Receive Sensitivity (Typical)	<a href="#">-87dBm@5.5Mbps</a> (8% PER) <a href="#">-84dBm@11Mbps</a> (8% PER)
Interface	PCMCIA Type II, 3.3Volts/5Volts
Output Power (Typical)	13dBm
Operating System	Windows 95/98/NT 4.0, Windows 2000
Electromagnetic Emission	FCC Part 15
Operating Environment	Operation Temperature: 0~40°C Storage Temperature: -20~70°C Operation Humidity: 10~90% RH