

150Mbps USB Wireless Adaptor User Manual

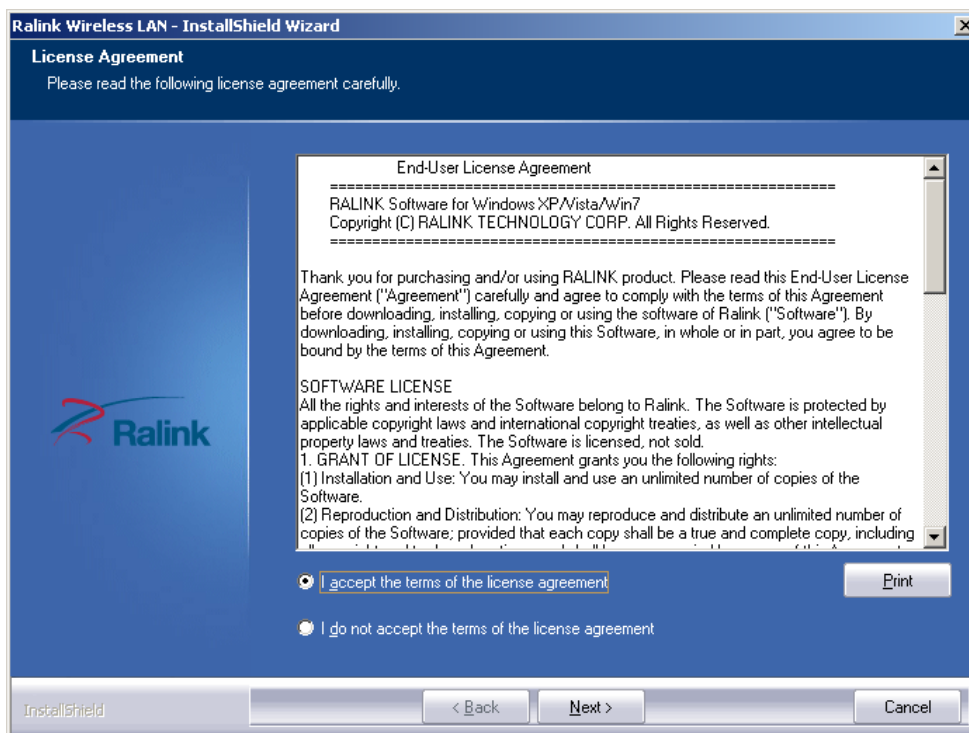
一、 Network Card Installation

Please follow the following steps to install your new wireless network card:

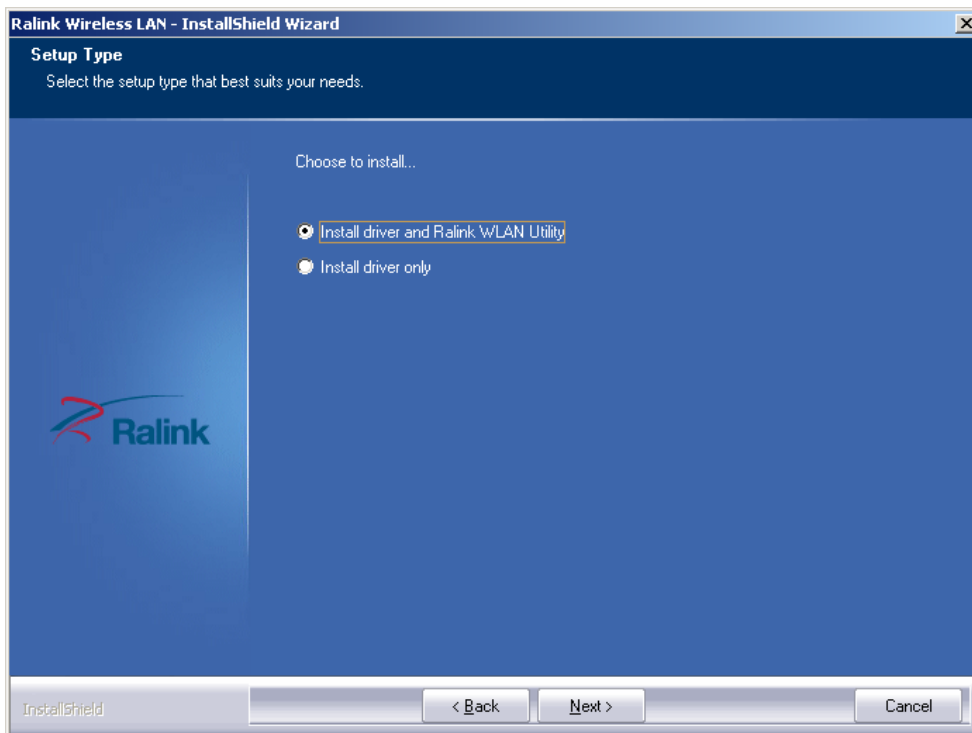
1. Insert the USB wireless network card into an empty USB2.0 port of your computer when computer has power on. Never use force to insert the card, if you feel it's stuck, flip the card over and try again;
2. Insert device driver CD into the CDROM drive of your computer, double click the 'Setup.exe' icon and run the 'Setup.exe' program;



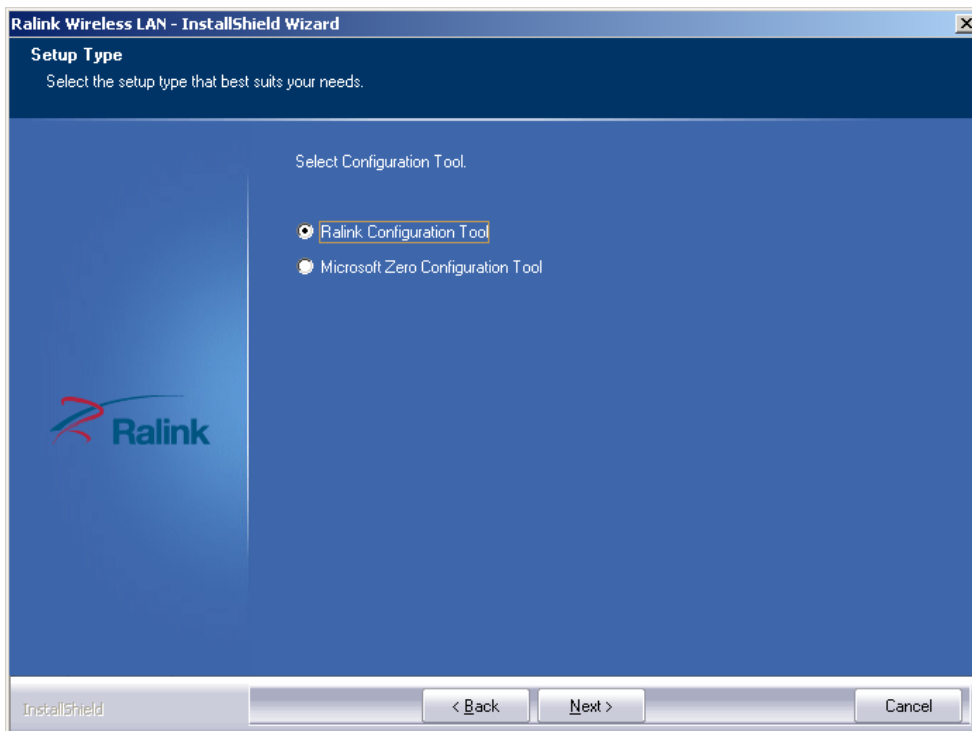
3. Select 'I accept the terms of the license agreement', and then click 'Next';



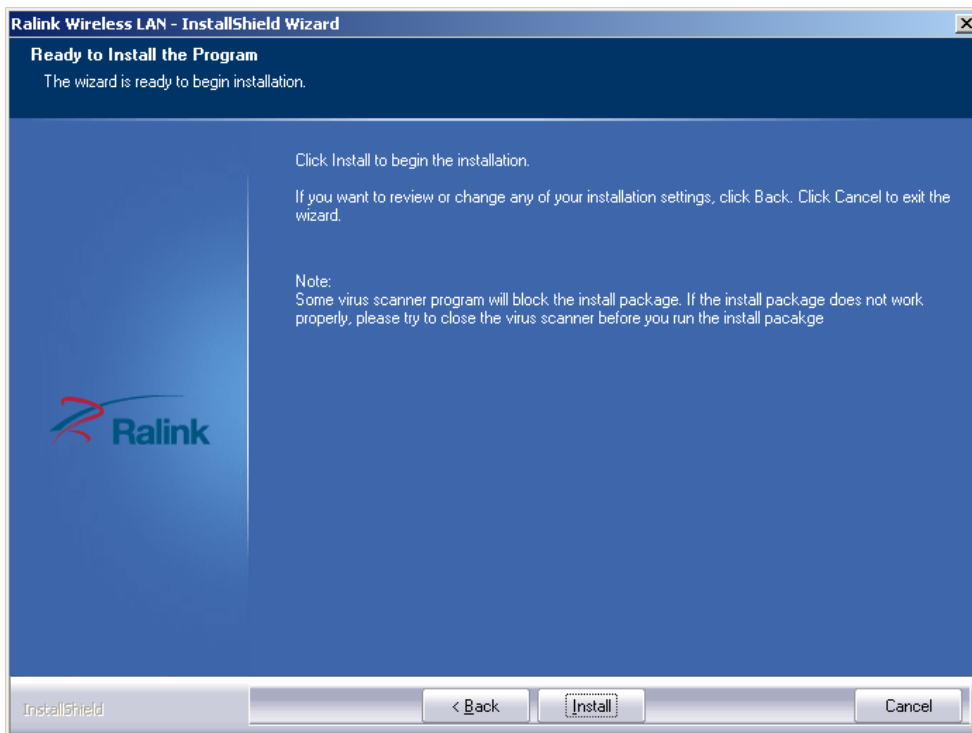
4. Select the setup type that best suits your needs, 'Install driver and Ralink WLAN Utility' are recommended;



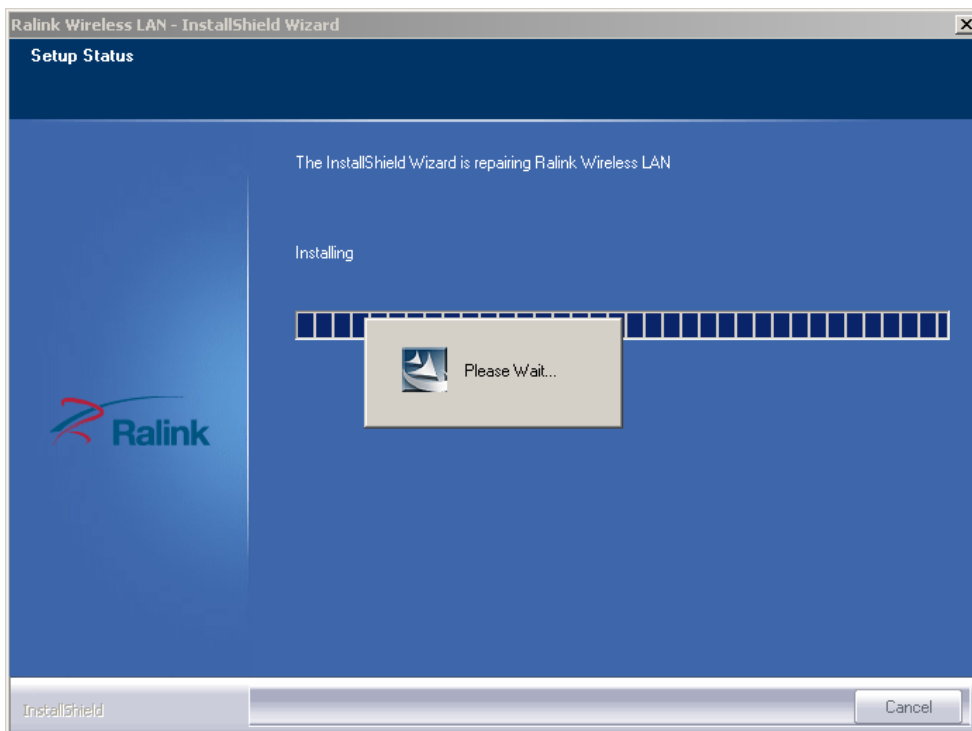
5. Click 'Next' , show the 'Select Configuration Tool' dialogue, you can manage this wireless adaptor both by "Ralink Configuration Tool" and "Microsoft Zero Configuration Tool";



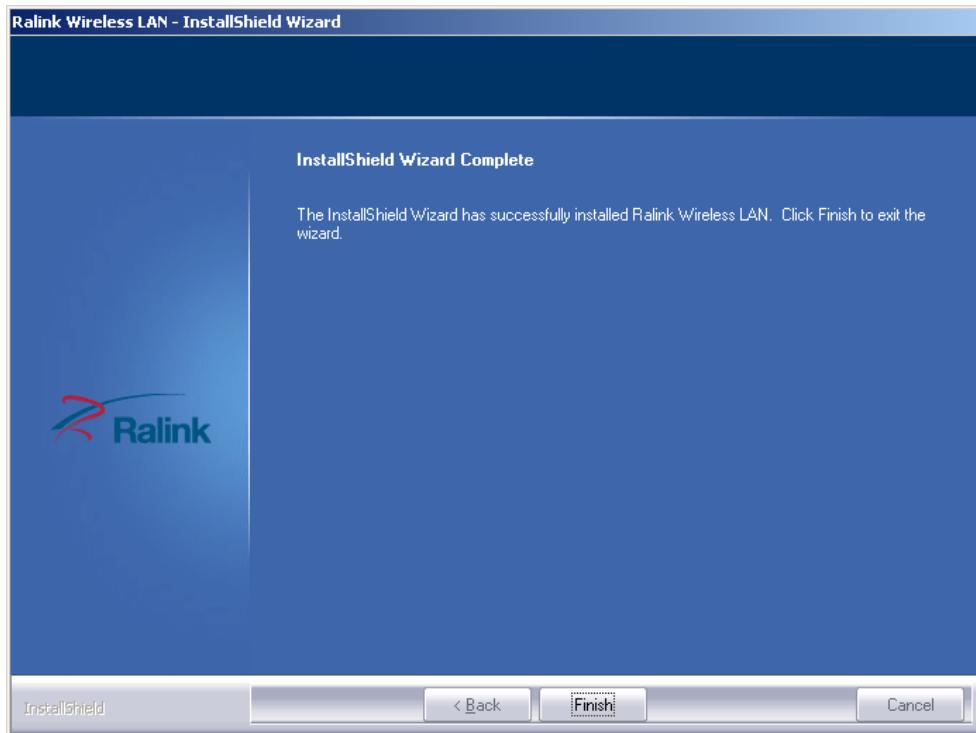
6. Click 'Next', and Show ready to install dialogue;



7. Click 'Install', and the installation is in process;



8. Finally, click 'Finish' to finish the driver installation;



二、Connect to Wireless Access Point



1. After installation has finished, it will try to connect to any unencrypted wireless access point automatically. If you want to connect a specific wireless access point, or the access point you wish to connect uses encryption, you have to configure the wireless network card and input the correct password to get connected to the wireless access point. Double click to open desktop lower

icon  ;

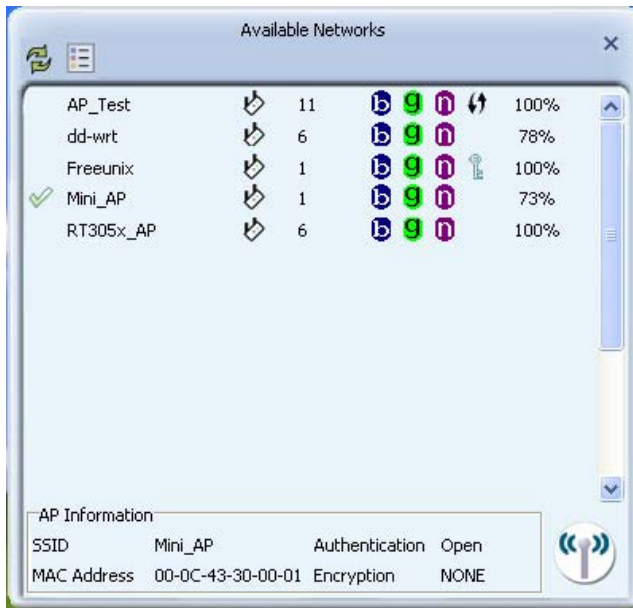


2. Displays the following picture;

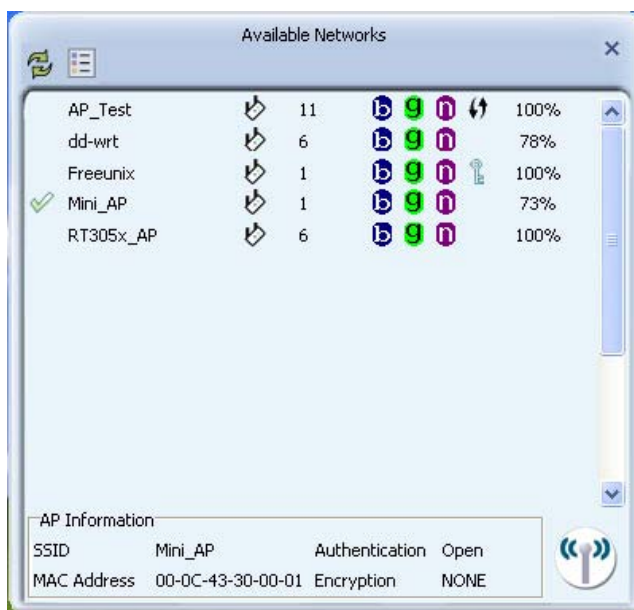


3. Click the icon  ; Scan available wireless access point. Scan results will display in the 'Network' zone. If you can't find the access point you wish to connect here, click the  Refresh button, until you can find your wireless access point;





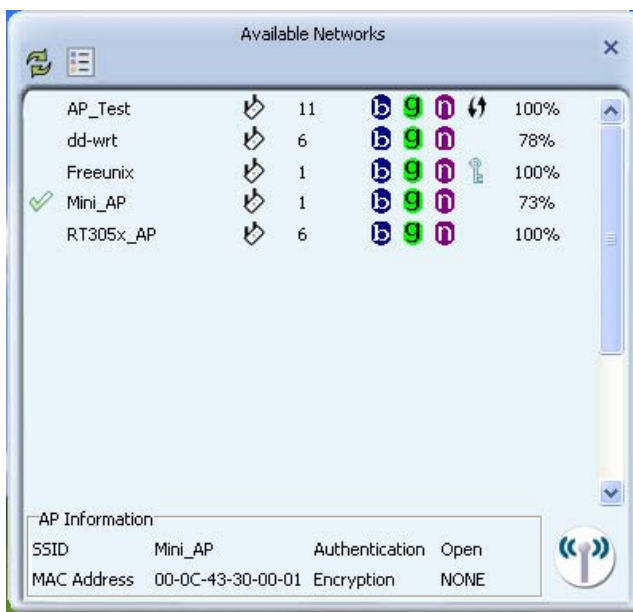


- Choose the wireless access point's SSID, and double-click it. If the AP is encrypted, you should follow the prompts to select the appropriate encryption type and enter a password;



- After you have connected to the wireless access point successfully, you can get the detail information of connected access point, such as status, IP address,

speed and so on. Click the icon , then the , you will see the signal quality and signal strength information.



FCC Statement

This equipment has been tested and found to comply with the limits for a Class B digital device, pursuant to part 15 of the FCC rules. These limits are designed to provide reasonable protection against harmful interference in a residential installation. This equipment generates, uses and can radiate radio frequency energy and, if not installed and used in accordance with the instructions, may cause harmful interference to radio communications. However, there is no guarantee that interference will not occur in a particular installation. If this equipment does cause harmful interference to radio or television reception, which can be determined by turning the equipment off and on, the user is encouraged to try to correct the interference by one or more of the following measures:

- Reorient or relocate the receiving antenna.
- Increase the separation between the equipment and receiver.
- Connect the equipment into an outlet on a circuit different from that to which the receiver is connected.
- Consult the dealer or an experienced radio/TV technician for help.

To assure continued compliance, any changes or modifications not expressly approved by the party responsible for compliance could void the user's authority to operate this equipment. (Example- use only shielded interface cables when connecting to computer or peripheral devices)

FCC Radiation Exposure Statement

This equipment complies with FCC RF radiation exposure limits set forth for an uncontrolled environment. This

transmitter must not be co-located or operating in conjunction with any other antenna or transmitter.

This equipment complies with Part 15 of the FCC Rules. Operation is subject to the following two conditions:

- (1) This device may not cause harmful interference, and
- (2) This device must accept any interference received, including interference that may cause undesired operation.

This equipment should be installed and operated with minimum distance 0.5cm between the radiator and your body.

The antenna is external antenna (Reserve SMA-type). And is rotatable.

SAR restriction applies to this dedicated antenna. SAR compliance is restricted to the dedicated external dipole antenna with an antenna gain of 4 dBi. The use of any other antenna type or antenna with higher gain is not permitted.