

# *Wireless AC600 Dual Band USB Adapter*

## *User Manual*

**Version: 1.0**  
**(November, 2013)**

# COPYRIGHT

Copyright ©2013/2014 by this company. All rights reserved. No part of this publication may be reproduced, transmitted, transcribed, stored in a retrieval system, or translated into any language or computer language, in any form or by any means, electronic, mechanical, magnetic, optical, chemical, manual or otherwise, without the prior written permission of this company

This company makes no representations or warranties, either expressed or implied, with respect to the contents hereof and specifically disclaims any warranties, merchantability or fitness for any particular purpose. Any software described in this manual is sold or licensed "as is". Should the programs prove defective following their purchase, the buyer (and not this company, its distributor, or its dealer) assumes the entire cost of all necessary servicing, repair, and any incidental or consequential damages resulting from any defect in the software. Further, this company reserves the right to revise this publication and to make changes from time to time in the contents thereof without obligation to notify any person of such revision or changes.

# Federal Communication Commission

## Interference Statement

This equipment has been tested and found to comply with the limits for a Class B digital device, pursuant to Part 15 of FCC Rules. These limits are designed to provide reasonable protection against harmful interference in a residential installation. This equipment generates, uses, and can radiate radio frequency energy and, if not installed and used in accordance with the instructions, may cause harmful interference to radio communications. However, there is no guarantee that interference will not occur in a particular installation. If this equipment does cause harmful interference to radio or television reception, which can be determined by turning the equipment off and on, the user is encouraged to try to correct the interference by one or more of the following measures:

1. Reorient or relocate the receiving antenna.
2. Increase the separation between the equipment and receiver.
3. Connect the equipment into an outlet on a circuit different from that to which the receiver is connected.
4. Consult the dealer or an experienced radio technician for help.

### FCC Caution

This device complies with Part 15 of the FCC Rules. Operation is subject to the following two conditions: (1) this device may not cause harmful interference, and (2) this device must accept any interference received, including interference that may cause undesired operation.

Any changes or modifications not expressly approved by the party responsible for compliance could void the authority to operate equipment.

## Federal Communication Commission (FCC) Radiation Exposure Statement

This EUT is compliance with SAR for general population/uncontrolled exposure limits in ANSI/IEEE C95.1-1999 and had been tested in accordance with the measurement methods and procedures specified in OET Bulletin 65 Supplement C. This equipment should be installed and operated with minimum distance 0.5cm between the radiator & your body.

This device is restricted to indoor use when operated in the 5.15 to 5.25 GHz frequency range.

The equipment version marketed in US is restricted to usage of the channels 1-11 only.

# **R&TTE Compliance Statement**

This equipment complies with all the requirements of DIRECTIVE 1999/5/EC OF THE EUROPEAN PARLIAMENT AND THE COUNCIL of March 9, 1999 on radio equipment and telecommunication terminal Equipment and the mutual recognition of their conformity (R&TTE)

The R&TTE Directive repeals and replaces in the directive 98/13/EEC (Telecommunications Terminal Equipment and Satellite Earth Station Equipment) As of April 8, 2000.

## **Safety**

This equipment is designed with the utmost care for the safety of those who install and use it. However, special attention must be paid to the dangers of electric shock and static electricity when working with electrical equipment. All guidelines of this and of the computer manufacture must therefore be allowed at all times to ensure the safe use of the equipment.

## **EU Countries Intended for Use**

The ETSI version of this device is intended for home and office use in Austria, Belgium, Denmark, Finland, France, Germany, Greece, Ireland, Italy, Luxembourg, the Netherlands, Portugal, Spain, Sweden, and the United Kingdom.

The ETSI version of this device is also authorized for use in EFTA member states: Iceland, Liechtenstein, Norway, and Switzerland.

## **EU Countries Not intended for use**

None.

# C A T A L O G

<b>Chapter I: Product Information .....</b>	<b>1</b>
1-1 Introduction and safety information .....	1
1-2 Safety Information.....	2
1-3 System Requirements .....	3
1-4 Package Contents .....	4
1-5 Familiar with your new wireless network card .....	5
<b>CHAPTER II: Driver Installation and Configuration .....</b>	<b>6</b>
2-1 Network Card Installation.....	6
2-2 Connect to Wireless Access Point.....	11
2-2-1 Using Realtek Utility .....	11
2-2-2 Using Windows Zero Configuration.....	16
2-3 Connection Profile Management .....	20
2-3-1 Add a new profile .....	21
2-3-2 Remove an existing profile .....	24
2-3-3 Edit an existing profile.....	25
2-3-4 Make a copy of existing profile.....	26
2-3-5 Set as default profile .....	27
2-4 View Network Statistics, General Information, and Status .....	28
2-4-1 General Information.....	28
2-4-2 Status.....	29
2-4-3 View Network Statistics.....	錯誤! 尚未定義書籤。
2-5 Miscellaneous Settings .....	30
2-6 Establish secure connection with AP by WPS .....	32
2-6-1 PIN Code.....	34
<b>CHAPTER III: Soft-AP Function .....</b>	<b>38</b>
3-1 Switch to AP Mode and Station Mode.....	38
3-1-1 Configure SSID and Channel.....	41
3-1-2 Setup Soft-AP Security .....	42
3-2 Advanced Settings.....	44
3-3 Wireless Statistics.....	45
3-4 Internet Connection Sharing (ICS).....	46
<b>CHAPTER IV: Appendix.....</b>	<b>47</b>
4-1 Hardware Specification .....	47
4-2 Troubleshooting .....	48
4-3 Glossary .....	50

## Chapter I: Product Information

### 1-1 Introduction and safety information

Thank you for purchasing this extreme high-speed 802.11 a/b/g/n/ac dual band wireless network card! Excepting common wireless standards 802.11 a/b/g/n, this wireless network card is also 802.11 ac compatible - data transfer rate is 433Mbps, and that's three times faster than 802.11n wireless network!

*Other features of this router including:*

- High-efficiency antenna expands the scope of your wireless network.
- High-speed data transfer rate - Up to 433Mbps.
- WMM function: control the bandwidth required for different applications.
- Comply with 802.11 a/b/g/n wireless networks.
- Supports major encryption methods like WEP, WPA, and WPA2 encryption.
- WPS configuration - You don't need an experienced computer technician to help you to get connected. Utilizing the software program of the card, you can get your computer connected by pushing a button or entering an 8-digit code. Pressing the button on the network card, the WPS connection can be activated as well.
- USB 2.0 interface - you can get it installed on your computer in just few seconds!

## 1-2 Safety Information

In order to keep the safety of users and your properties, please follow the following safety instructions:

1. This USB wireless network card is designed for indoor use only. **DO NOT** expose this network card to direct sun light, rain, or snow.
2. **DO NOT** put this network card at or near hot or humid places, like kitchen or bathroom. Also, do not left this wireless network card in the car in summer.
3. This network card is small enough to put in a child's mouth, and it could cause serious injury or could be fatal. If they throw the network card, the card will be damaged. **PLEASE KEEP THIS NETWORK CARD OUT THE REACH OF CHILDREN!**
4. This network card will become hot when being used for long time (***This is normal and is not a malfunction***). **DO NOT** put the network card on a paper, cloth, or other flammable objects after the network card has been used for a long time.
5. There's no user-serviceable part inside the network card. If you found that the network card is not working properly, please contact your dealer of purchase and ask for help. **DO NOT** disassemble the network card by yourself, warranty will be void.
6. If the network card falls into water, **DO NOT USE IT AGAIN BEFORE YOU SEND THE CARD TO THE DEALER OF PURCHASE FOR INSPECTION.**
7. If you smell something strange or even see some smoke coming out from the network card, switch the computer off immediately, and call dealer of purchase for help.



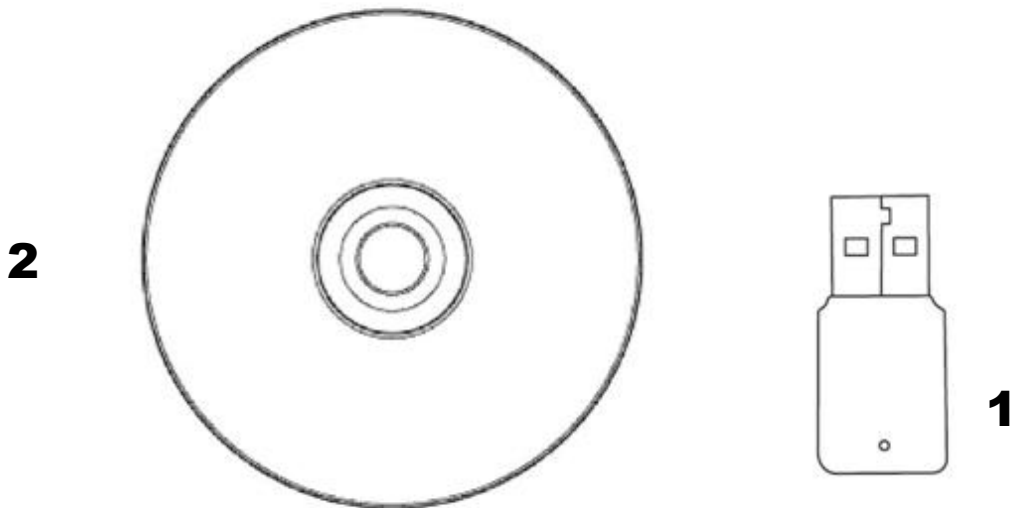
### 1-3 System Requirements

- An empty USB 2.0 port (May not be able work with USB 1.1 port, and performance will be greatly reduced)
- Windows XP, Windows 7, or Windows 8 operating system
- CD-ROM drive
- At least 100MB of available disk space

## 1-4 Package Contents

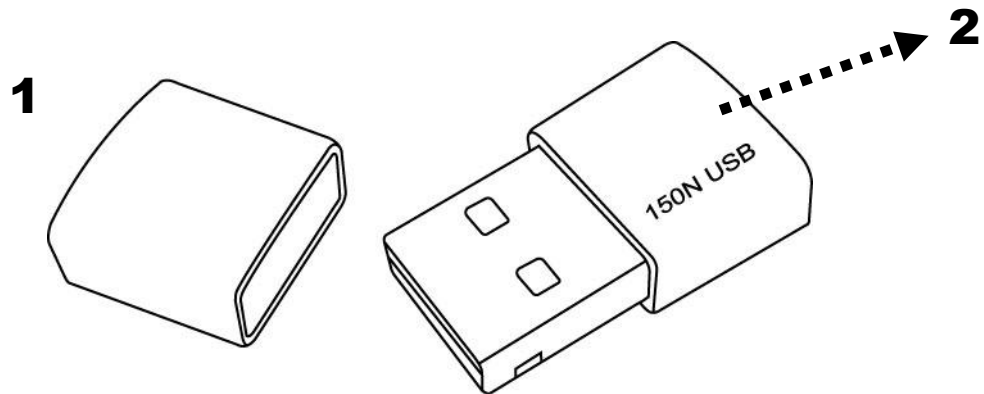
Before you starting to use this wireless network card, please check if there's anything missing in the package, and contact your dealer of purchase to claim for missing items:

- USB Wireless Network Card (1 pcs) ..... 1
- Driver/Utility/Quick Guide/User Manual CD-ROM (1 pcs) ..... 2



## 1-5 Familiar with your new wireless network card

1. USB Connector
2. Link/Activity LED (Under the case)



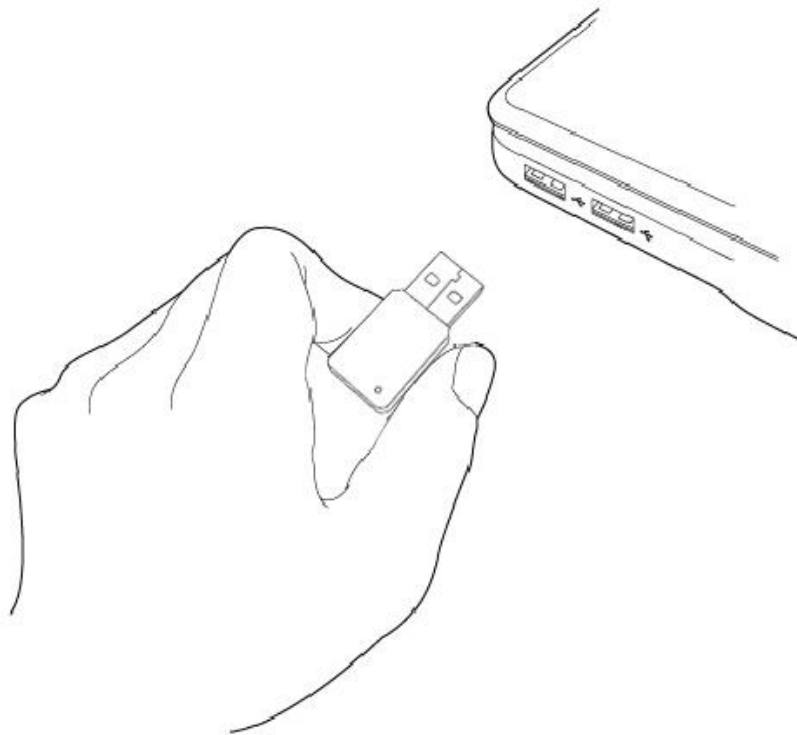
LED Name	Light Status	Description
Link/ Activity	Off	No wireless network card is installed.
	On	Solid light 5 seconds means WPS connection is established successfully.
	Blinking	Wireless network card is normally installed /Linked to a wireless access point / Transferring or receiving data. Fast Blinking three times per second means WPS is activated. The network card will wait for 2 minutes to establish WPS connection.

## CHAPTER II: Driver Installation and Configuration

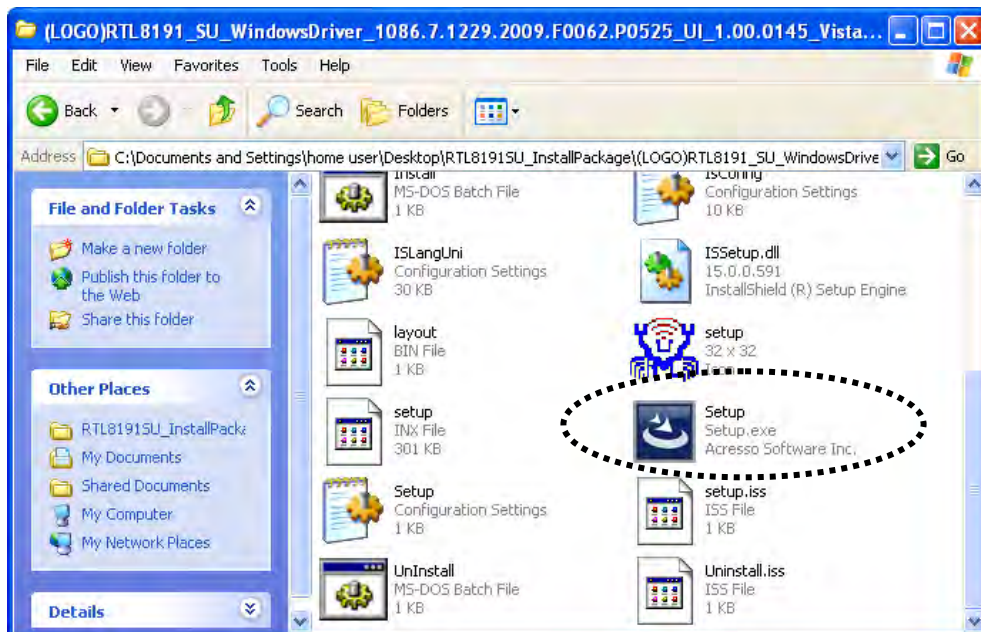
### 2-1 Network Card Installation

Please follow the following instructions to install your new wireless network card:

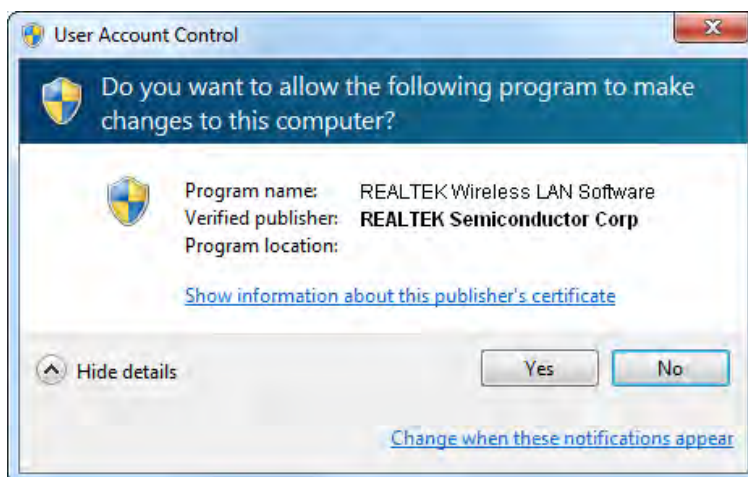
1. Insert the USB wireless network card into an empty USB 2.0 port of your computer when computer is switched on. Never use force to insert the card, if you feel it's stuck, flip the card over and try again.



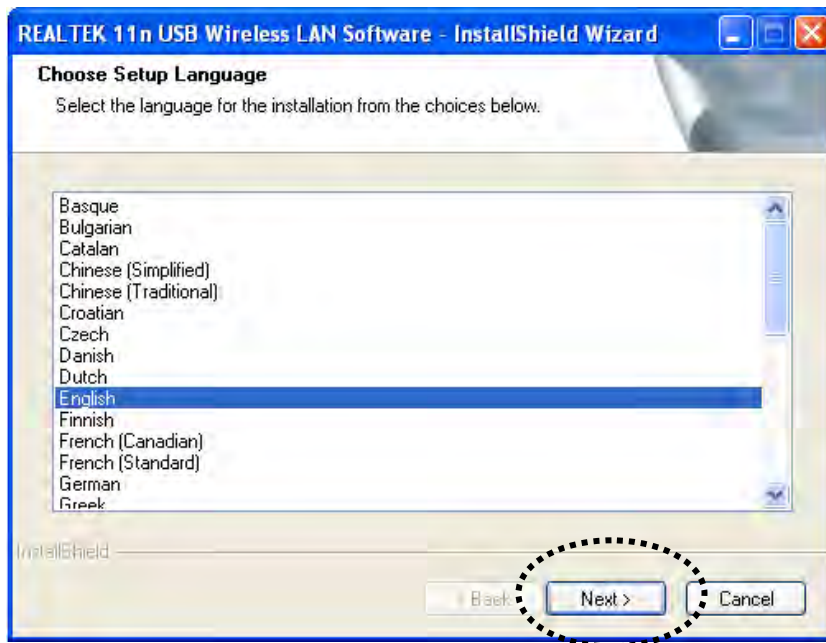
2. Insert device driver CDROM into the CD/DVD ROM drive of your computer, and execute 'Setup.exe' program in 'Driver' folder.



For Windows Vista / Windows 7 OS, you'll be prompted to confirm installation. Click 'Yes' to continue.



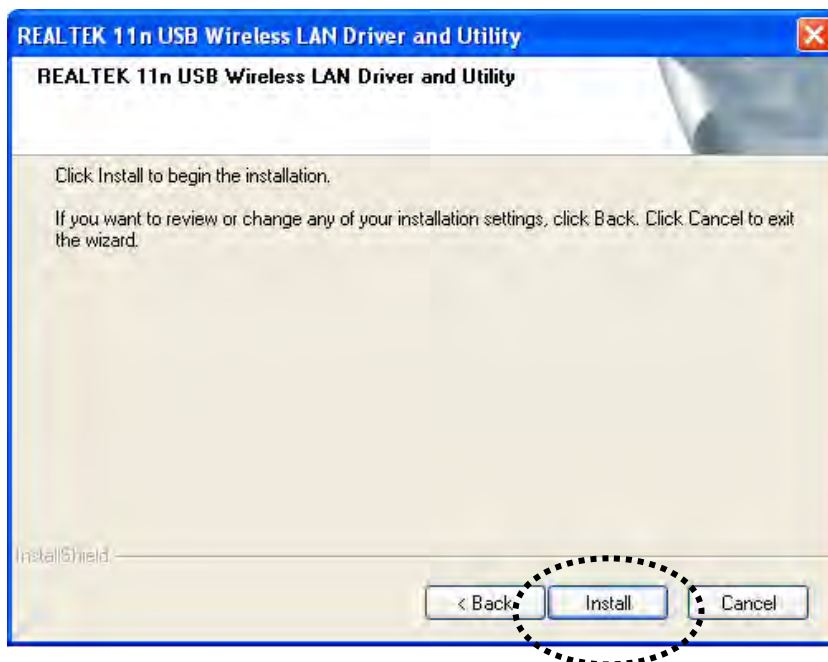
3. Please select the language you wish to use, then click 'Next'.



4. Click 'Next' to continue.



5. Click 'Install' to start installation. Installation procedure needs few minutes to complete, please be patient.



6. Click 'Finish' to reboot your computer to complete installation procedure. If you don't want to reboot computer now, select 'No, I'll restart my computer later' option and click 'Finish'. Please note you have to reboot your computer before you can use your new USB wireless network card.



7. A new icon will appear near the clock of system tray:



**HERE!**

Left-click the icon will launch wireless network configuration utility, and you can right-click the icon to show the quick menu of configuration utility. This icon also uses different color to show the status of wireless connection:



Wireless network card not detected



No connection with access point is established (black).



Connection with access point has been established (green)

For detailed instructions of wireless network configuration utility, please see next chapter.



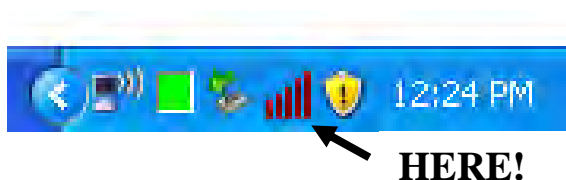
## 2-2 Connect to Wireless Access Point

To use wireless network, you have to connect to a wireless access point first. You can either use Realtek utility (comes with network card driver), or Windows Zero Config utility (comes with Windows operating system).

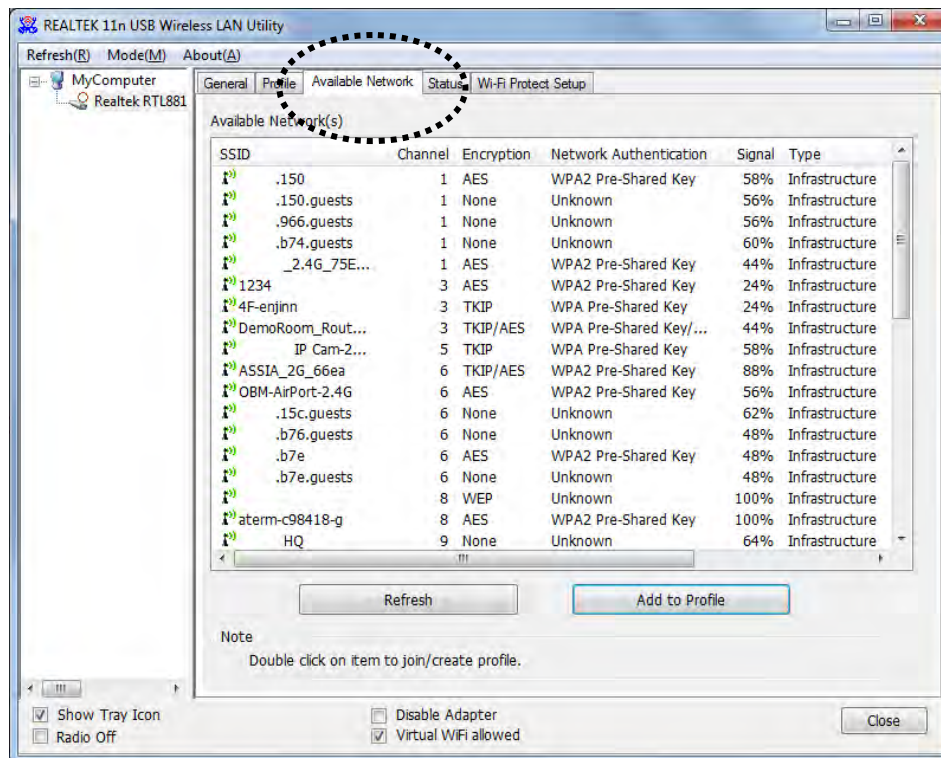
### 2-2-1 Using Realtek Utility

Please follow the following instructions to use Realtek configuration utility to connect to wireless access point.

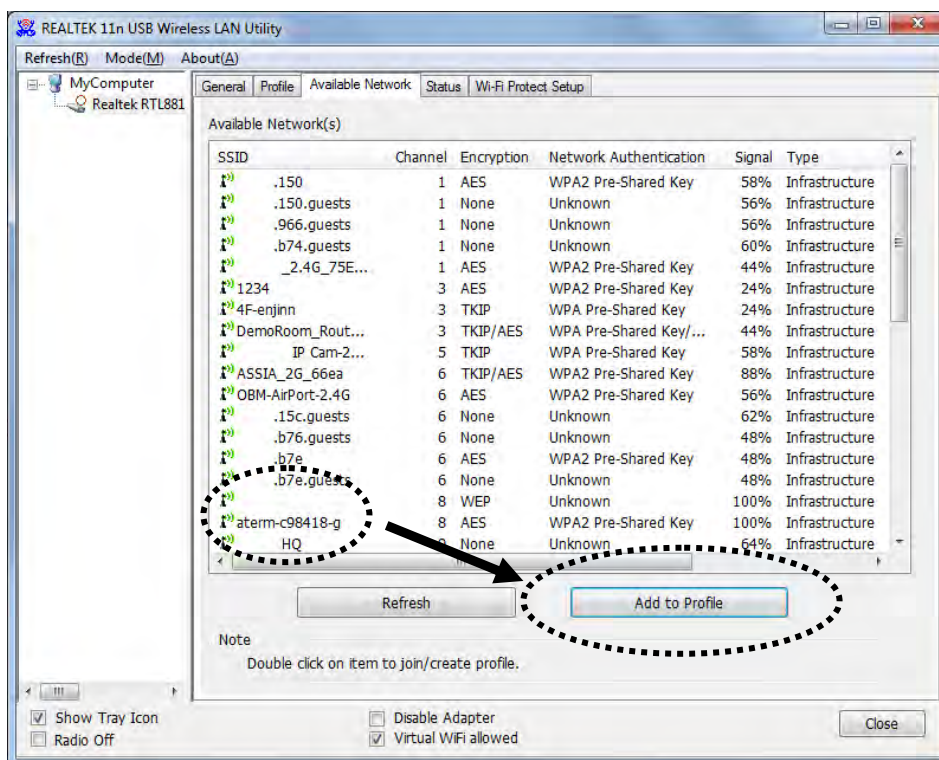
1. Left-click the Realtek configuration utility icon located at lower-right corner of computer desktop, and configuration menu will appear:



2. Wireless utility will appear. Click 'Available Network' menu to search for wireless access points nearby.



3. Please wait for a while, and all wireless access points which can be reached by this wireless network card will be displayed here.

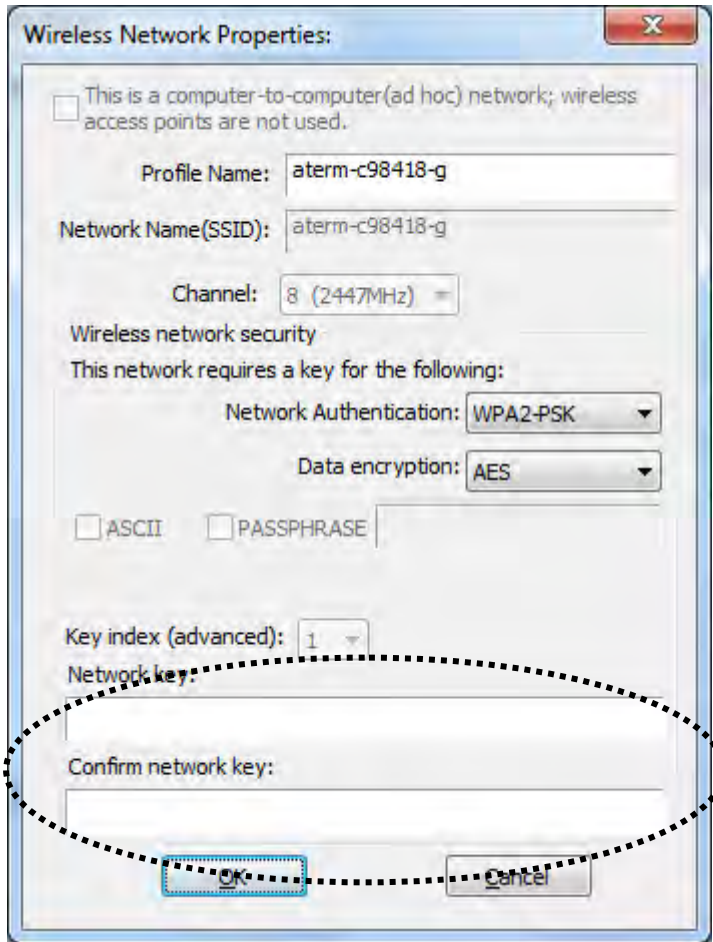


If the wireless access point you wish to connect does not appear here, you can click ‘Refresh’ button to scan for wireless access points again; if the wireless access point you’re looking for still not appear, try to move the computer closer.

When the access point you’re looking for is on the list, left-click it and then double click it or click ‘Add to Profile’.

4. If a password (a.k.a. ‘Network Key’) is required to access the wireless access point, please input it in ‘Network key’ (and input it again in ‘Confirm network key’ for confirmation). Click ‘OK’ when password is properly inputted.

*NOTE: Network security type (‘Network Authentication’ and ‘Data encryption’) will be selected automatically based on wireless access point’s security setting. It’s not required to change these settings by yourself.*



All options in this page will be filled automatically according to the access point you wish to add to profile. However, you can still modify any of them to meet your requirement.

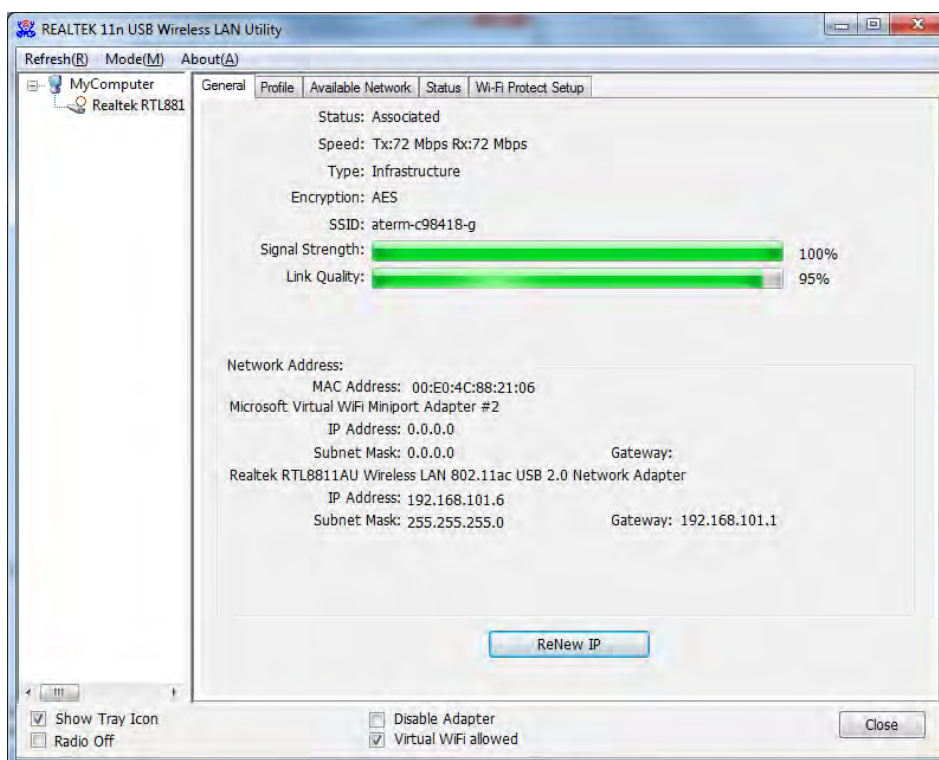
Profile name	You can give a name to this profile, so you can remember its purpose easily. It can be any phrase to help you remember.
Network Name (SSID)	The SSID (Service Set Identifier, i.e. access point's name). This field will be filled as the access point you selected when SSID is not hidden and grayed out. If SSID is hidden, you have to input correct SSID you yourself.
This is a computer-to-computer (ad hoc) network	Check this box if you wish to connect to another computer / network device by ad hoc method. When not accessing to wireless access point, you have to check this box.
Channel	Select wireless channel for ad hoc connection.

	This option only appears when you're using ad hoc connection.
Network Authentication	Select the network authentication type from drop-down menu. This setting must be identical with the setting of wireless access point you wish to connect.
Data encryption	Select the data encryption type from drop-down menu. This setting must be identical with the setting of wireless access point you wish to connect.
ASCII / PASSPHRASE	When the encryption type is 'WEP', it's required to input a set of 'passphrase' to connect to wireless access point. Check 'ASCII' or 'PASSPHRASE' depends on the security setting of access point, and input it in the box; if you select 'PASSPHRASE' you also need to select the length of the key.  The passphrase must be identical with the setting of wireless access point you wish to connect.
Key index	Select WEP key index. For most of access points you can select '1', but please refer to the setting of the access point.
Network key / Confirm network key	When the encryption type is 'WPA' or 'WPA2-PSK', it's required to input a set of 'passphrase' to connect to wireless access point. Please input the same passphrase in two boxes for confirmation.
EAP TYPE / Tunnel / Provision Mode	When authentication type is any of 802.1X, you have to select EAP type, tunnel, and provision mode from dropdown menu. This setting must be identical with your 802.1x authentication server.
Username / Identity / Domain / Password	Please input 802.1x related authentication information here.
Certificate	If certification is required to authenticate with 802.1x authentication server, please select a

	local certificate from dropdown list.
PAC	Check this box and PAC (Privilege Access Certificate) will be automatically selected.

Please click 'OK' when ready.

5. Network card will attempt to connect to access point now, this may require few seconds to minutes, please be patient. When the 'Status' become 'Associated', your computer is connected to access point you selected. Click 'Close' to close configuration menu.

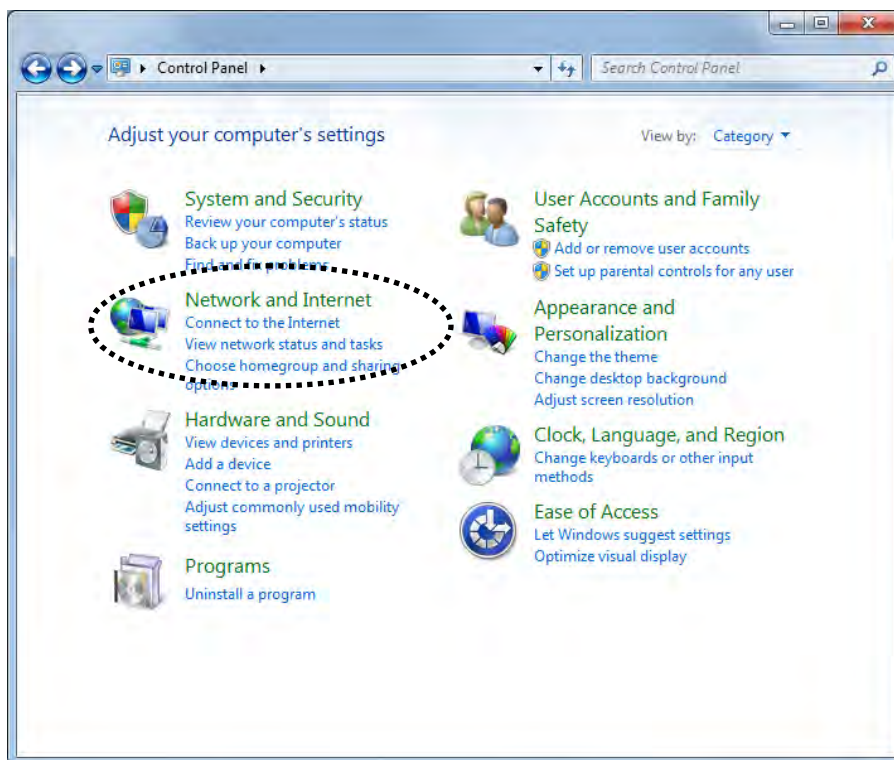


*NOTE: If you connected to an access point but the connection has been dropped soon, please check security settings and re-check password spelling.*

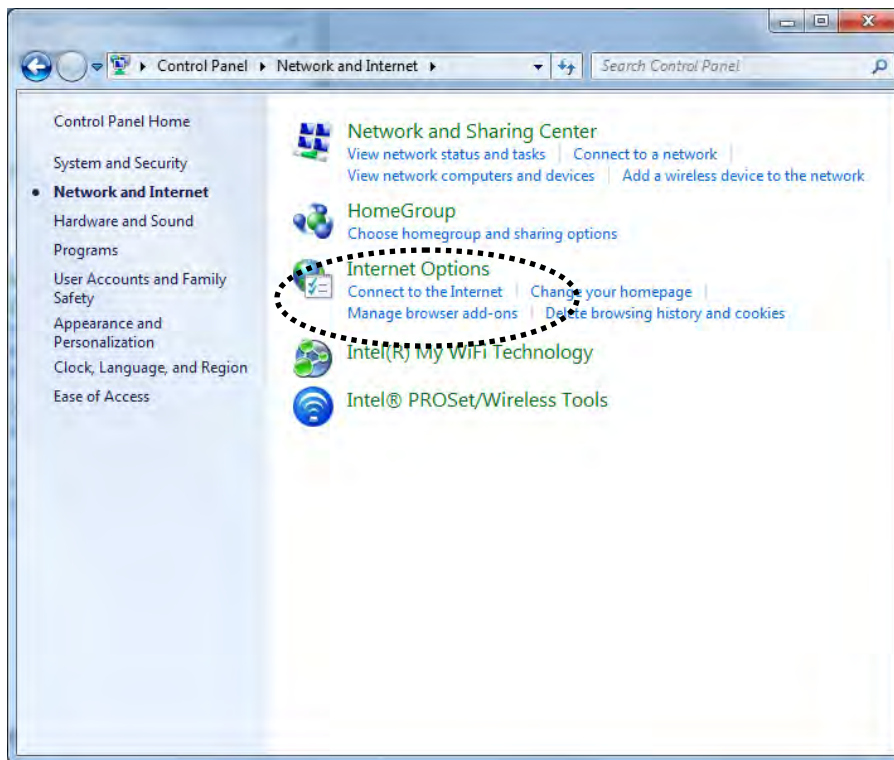
## 2-2-2 Using Windows Zero Configuration

Windows XP, 7 and 8 has a built-in wireless network configuration utility, called as 'Windows Zero Configuration' (WZC). You can also use WZC to configure your wireless network parameter:

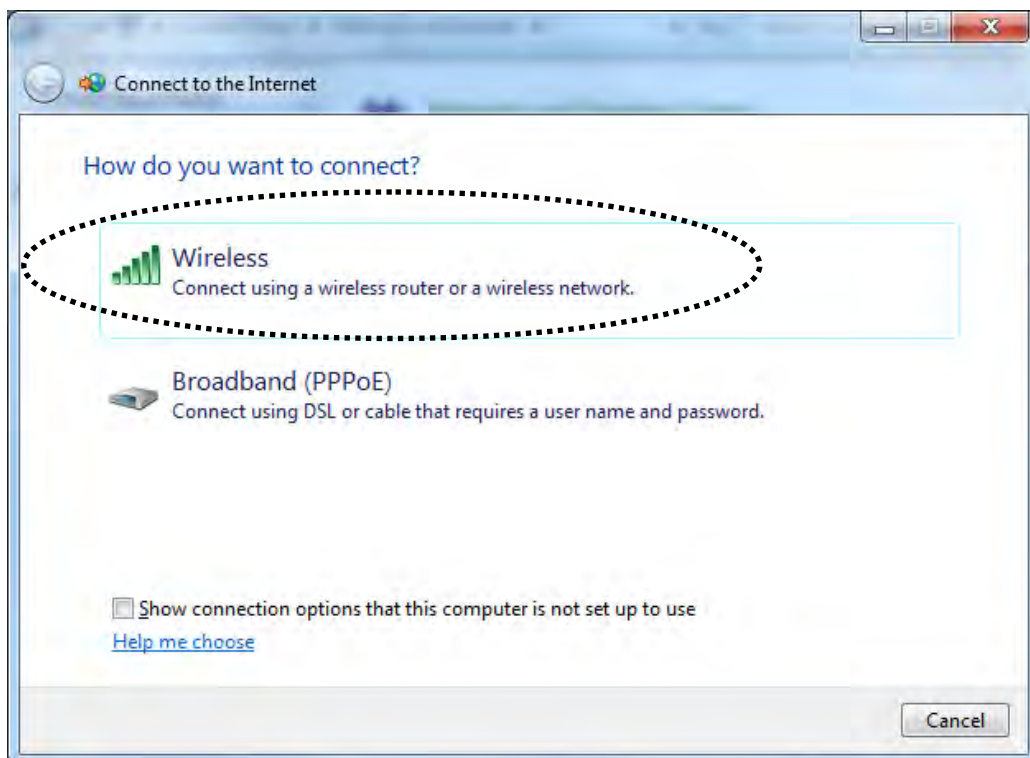
1. Click 'Start' button (should be located at the bottom-left corner of windows desktop), click 'Control Panel', then click 'Network and Internet' in Control Panel.



2. Double click 'Connect to the Internet'.



3. Select 'Wireless'.



4. All wireless access points in proximity will be displayed here. If the access point you want to use is not displayed here, please try to move your computer closer to the access point, or you can click 'Refresh network list' to rescan access points. Click the access point you want to use if it's shown, then click 'Connect'.



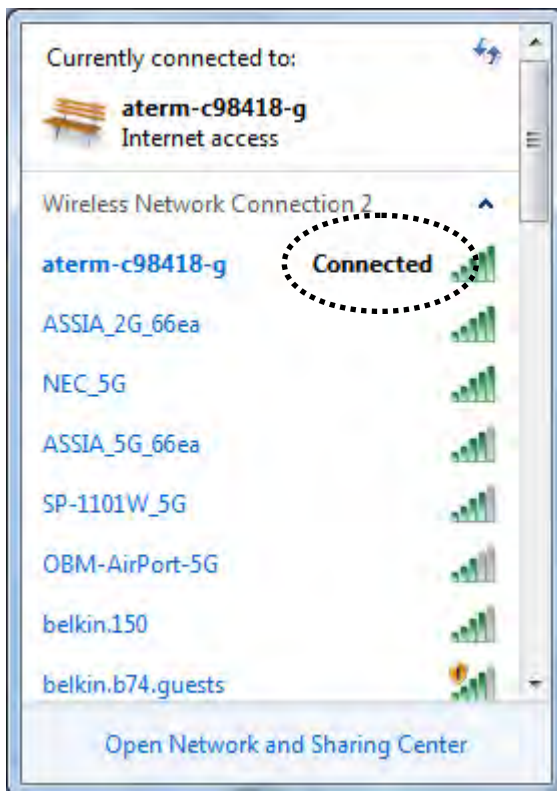
5. If the access point is protected by encryption, you have to input its security key or passphrase here. It must match the encryption setting on the access point.

If the access point you selected does not use encryption, you'll not be prompted for security key or passphrase.





6. If you can see 'Connected' message, the connection between your computer and wireless access point is successfully established.



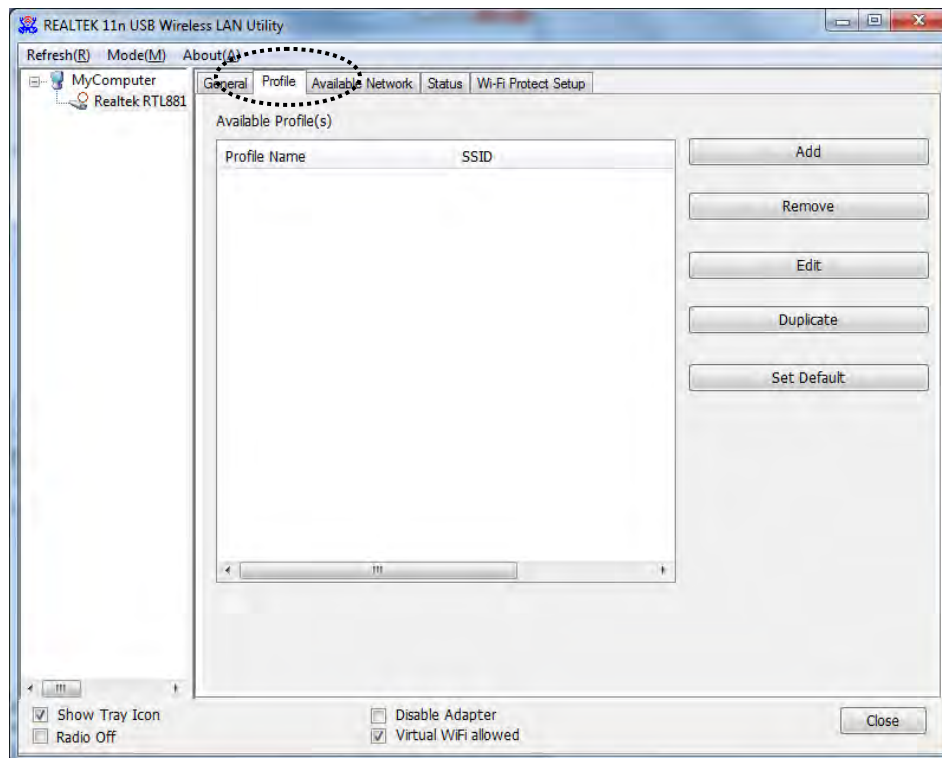
## 2-3 Connection Profile Management

If you need to connect to different wireless access points at different time, like of access point of your home, office, cybercafe, or public wireless service, you can store the connection parameters (encryption, passphrase, security etc, etc.) as a profile for every access point, so you don't have to input these parameters every time when you want to connect to a specific wireless access point.

To manage profiles, right-click the Realtek configuration utility icon located at lower-right corner of computer desktop, then click 'Open Config Utility'.



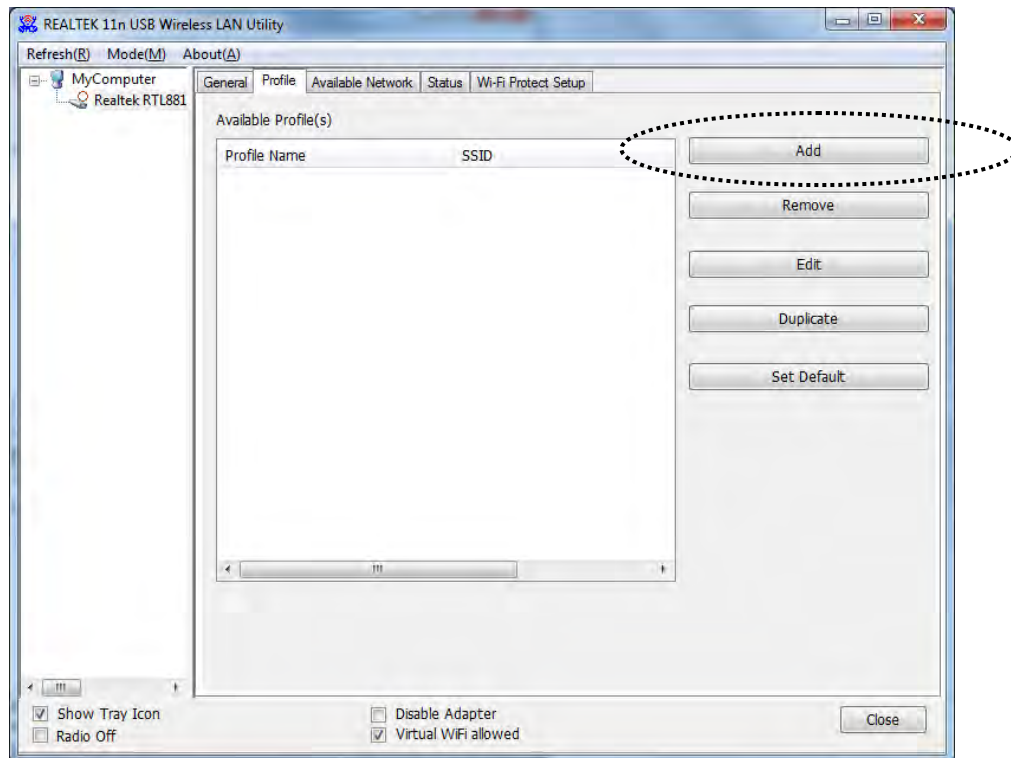
Click the 'Profile' menu.



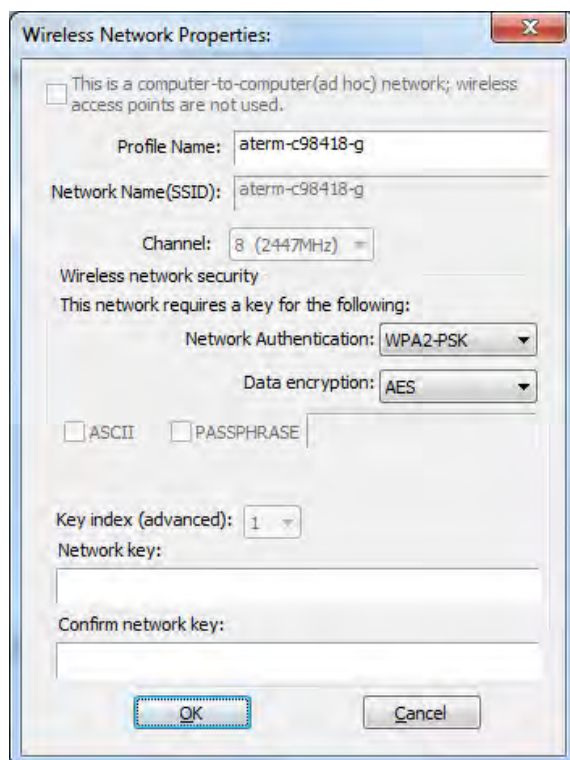
## 2-3-1 Add a new profile

By this function you can setup the connection parameters for a specific wireless access point in advance, without contacting it first.

If you want to create a new profile, click 'Profile' menu, then click 'Add' button.



You'll be prompted to input connection parameters for the wireless access point you wish to connect:



Required parameters are:

Profile name	You can give a name to this profile, so you can remember its purpose easily. It can be any phrase to help you remember.
Network Name (SSID)	The SSID (Service Set Identifier, i.e. access point's name). This must be identical with the SSID of the access point you wish to connect.
This is a computer-to-computer (ad hoc) network	Check this box if you wish to connect to another computer / network device by ad hoc method. When not accessing to wireless access point, you have to check this box.
Channel	Select wireless channel for ad hoc connection. This option only appears when you're using ad hoc connection.
Network Authentication	Select the network authentication type from drop-down menu. This setting must be identical with the setting of wireless access point you wish to connect.

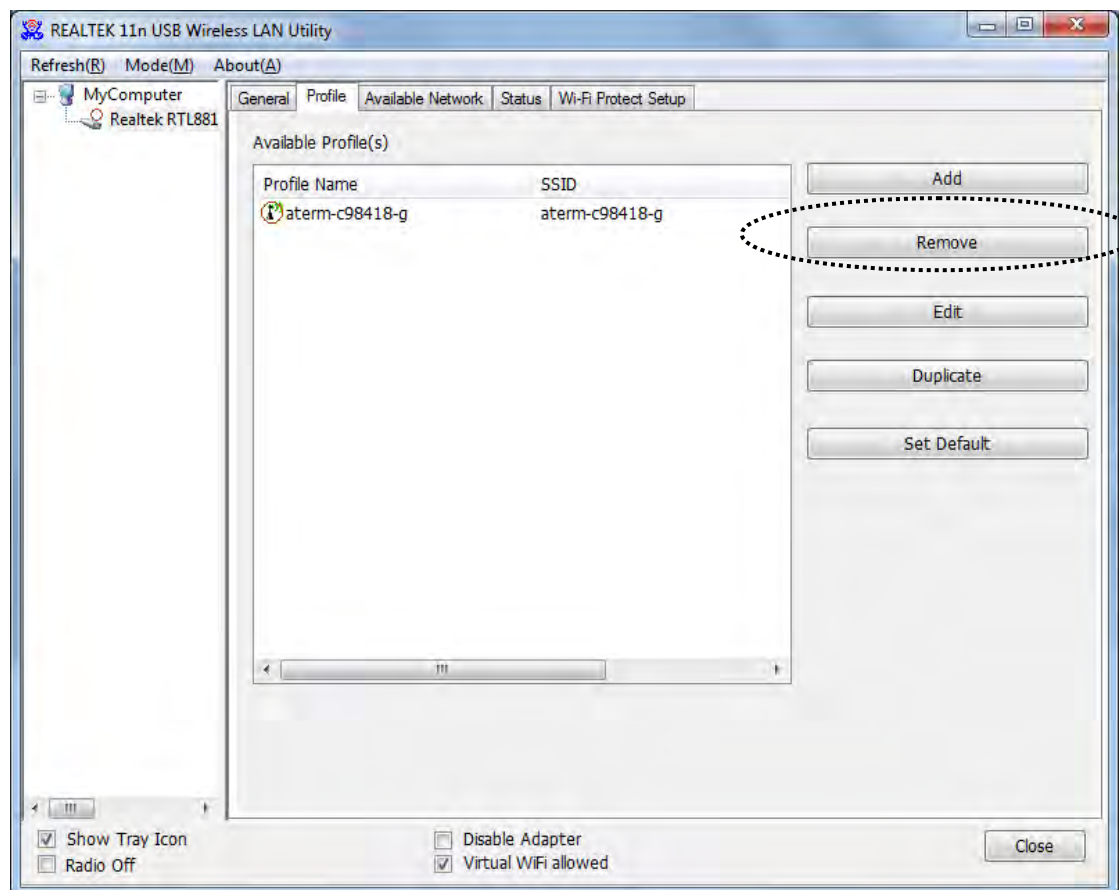
Data encryption	Select the data encryption type from drop-down menu. This setting must be identical with the setting of wireless access point you wish to connect.
ASCII / PASSPHRASE	When the encryption type is 'WEP', it's required to input a set of 'passphrase' to connect to wireless access point. Check 'ASCII' or 'PASSPHRASE' depends on the security setting of access point, and input it in the box; if you select 'PASSPHRASE' you also need to select the length of the key.  The passphrase must be identical with the setting of wireless access point you wish to connect.
Key index	Select WEP key index. For most of access points you can select '1', but please refer to the setting of the access point.
Network key / Confirm network key	When the encryption type is 'WPA' or 'WPA2-PSK', it's required to input a set of 'passphrase' to connect to wireless access point. Please input the same passphrase in two boxes for confirmation.
EAP TYPE / Tunnel / Provision Mode	When authentication type is any of 802.1X, you have to select EAP type, tunnel, and provision mode from dropdown menu. This setting must be identical with your 802.1x authentication server.
Username / Identity / Domain / Password	Please input 802.1x related authentication information here.
Certificate	If certification is required to authenticate with 802.1x authentication server, please select a local certificate from dropdown list.
PAC	Check this box and PAC (Privilege Access Certificate) will be automatically selected.

When all required parameters are set, click 'OK' to create and save a new profile.

## 2-3-2 Remove an existing profile

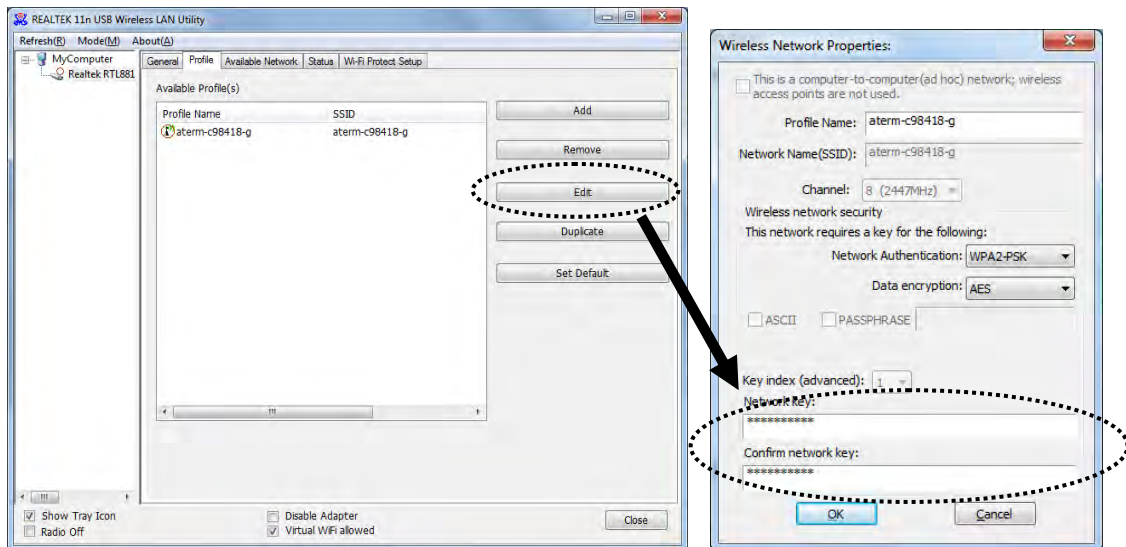
When you no longer need an existing profile, you can remove it.

If you want to remove a profile, click 'Profile' menu, then select an existing profile which you wish to remove, and then click 'Remove' button.



### 2-3-3 Edit an existing profile

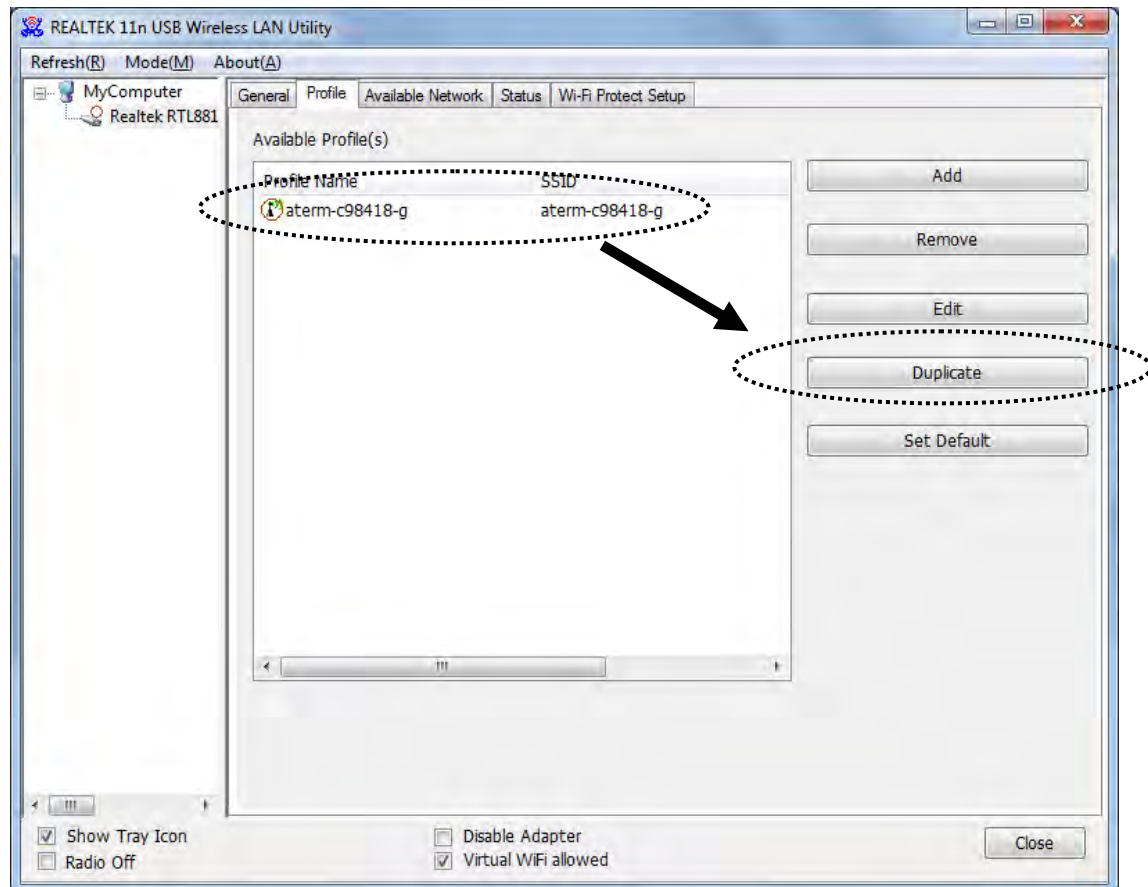
If you have added a profile before, and you wish to change the content of the profile, you can use this function. Please select a profile from the list first, then click 'Edit' button. You'll be provided with the contents of selected profile, and you can edit them. Click 'OK' to save changes, or click 'Cancel' to discard changes.



## 2-3-4 Make a copy of existing profile

If you need to make a copy of a specific profile, you can use this function. This function is very convenient when you need to build a new profile which parameters are similar to any existing profile.

To do this, select an existing profile, then click 'Duplicate' button.

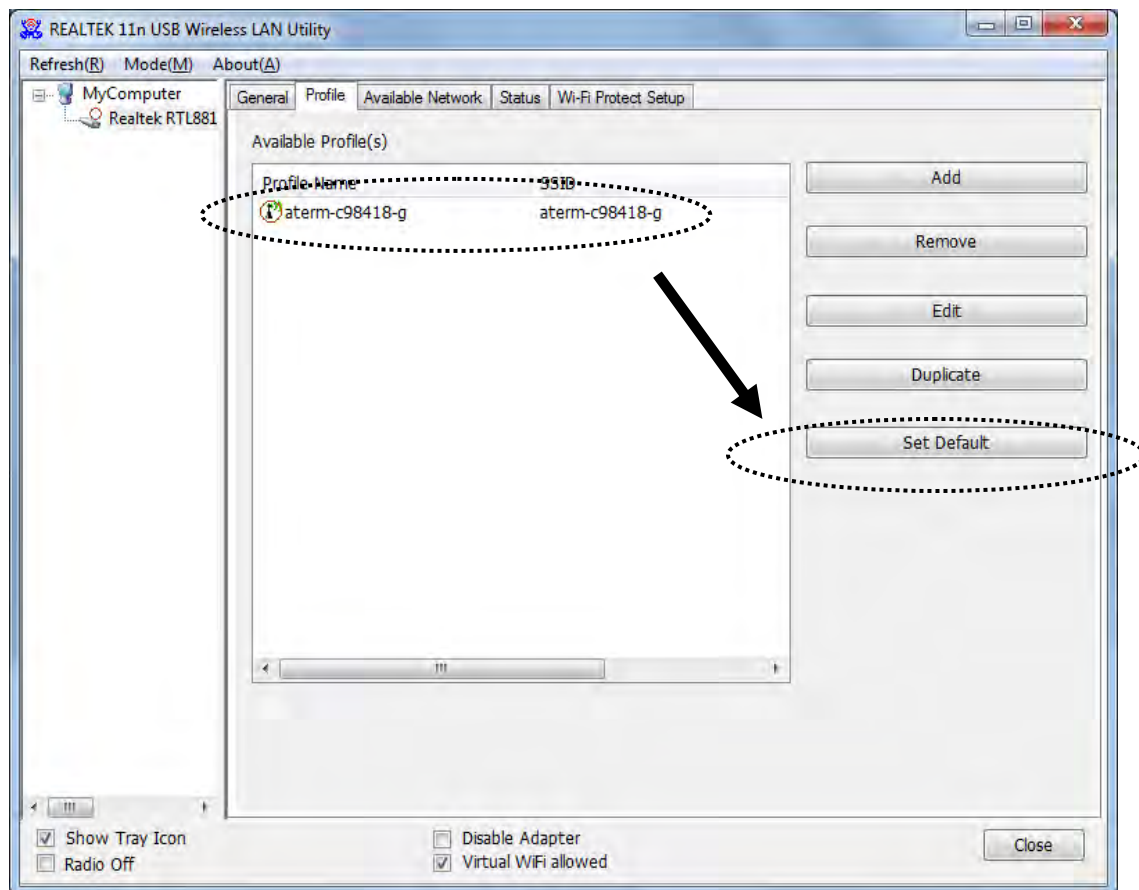


You'll be prompted to input a profile name, please use an identical name that does not exist in profile list.



## 2-3-5 Set as default profile

If you wish to use a specific profile as default connection, you can select a profile in the list, and click 'Set Default'. Selected profile will become default selection and Realtek configuration utility will attempt to connect to selected access point.

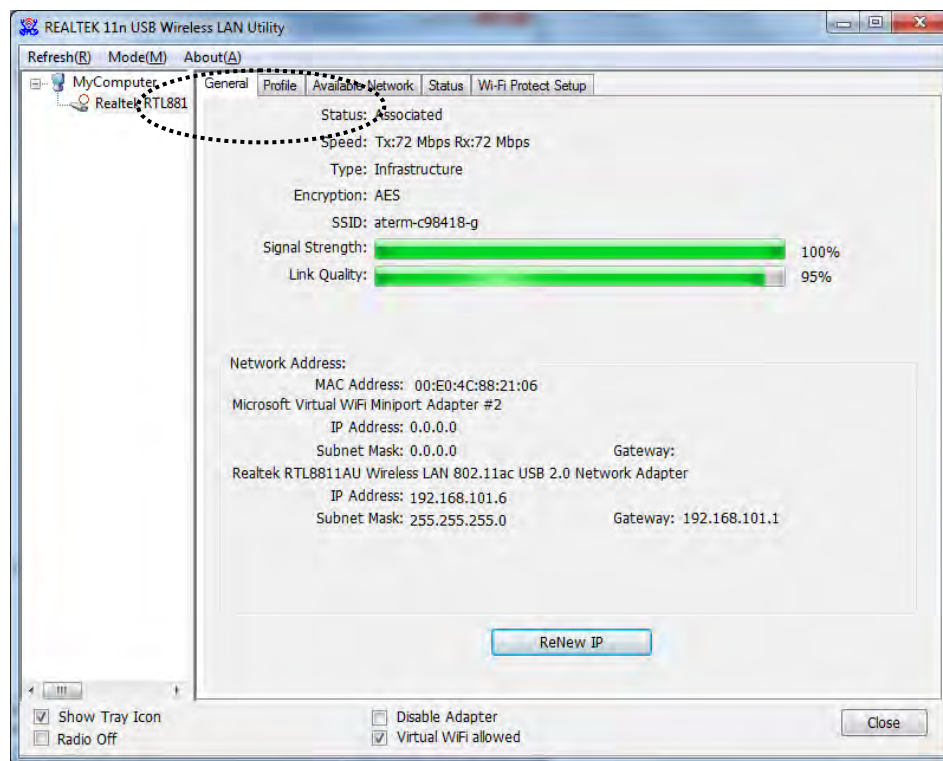


## 2-4 View Network Statistics, General Information, and Status

The configuration utility provides information about network statistics and link status. If you want to know how your wireless network card works, you can use these functions to get detailed information about the wireless connection you're using.

### 2-4-1 General Information

If you want to know the general information of the access point you're connecting to, click 'General' menu:

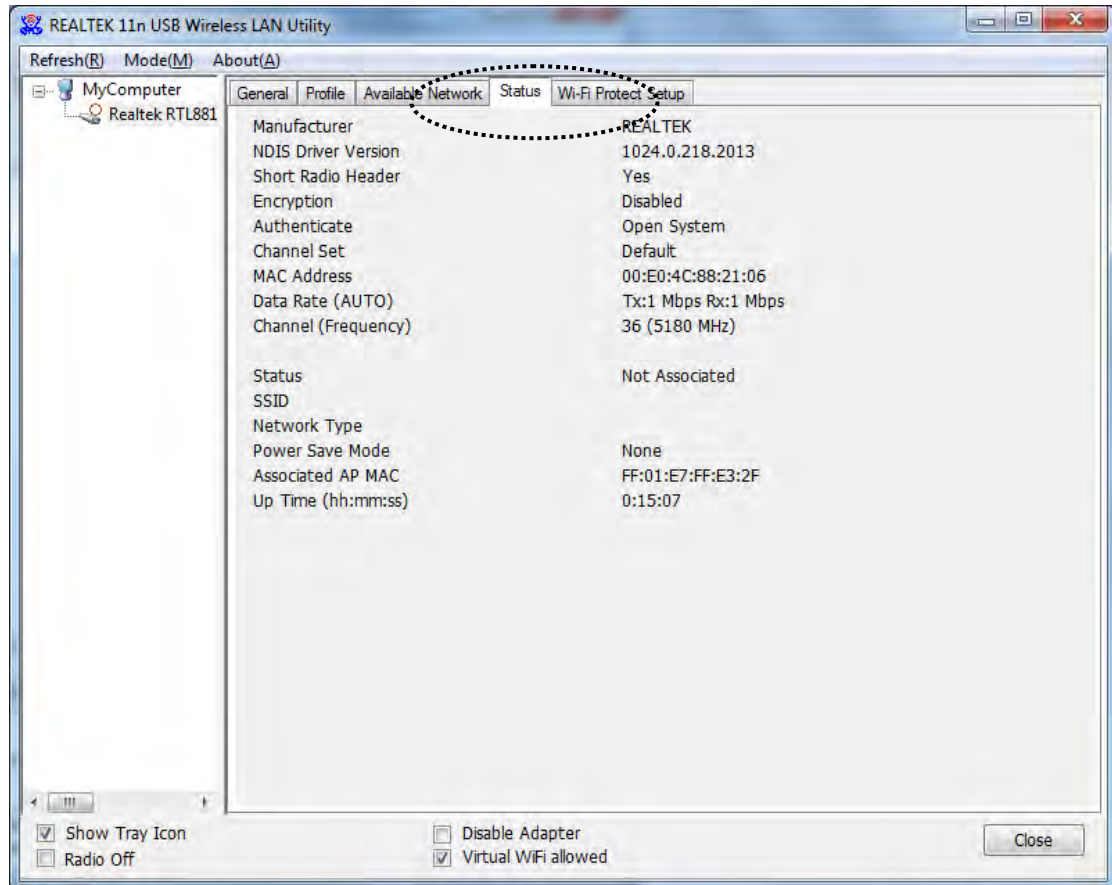


All general information like signal strength and link quality will be displayed here. These information are very useful when you encounter some problem on connecting to access point.

If you wish to get a new IP address from DHCP server, you can click 'ReNew IP' button.

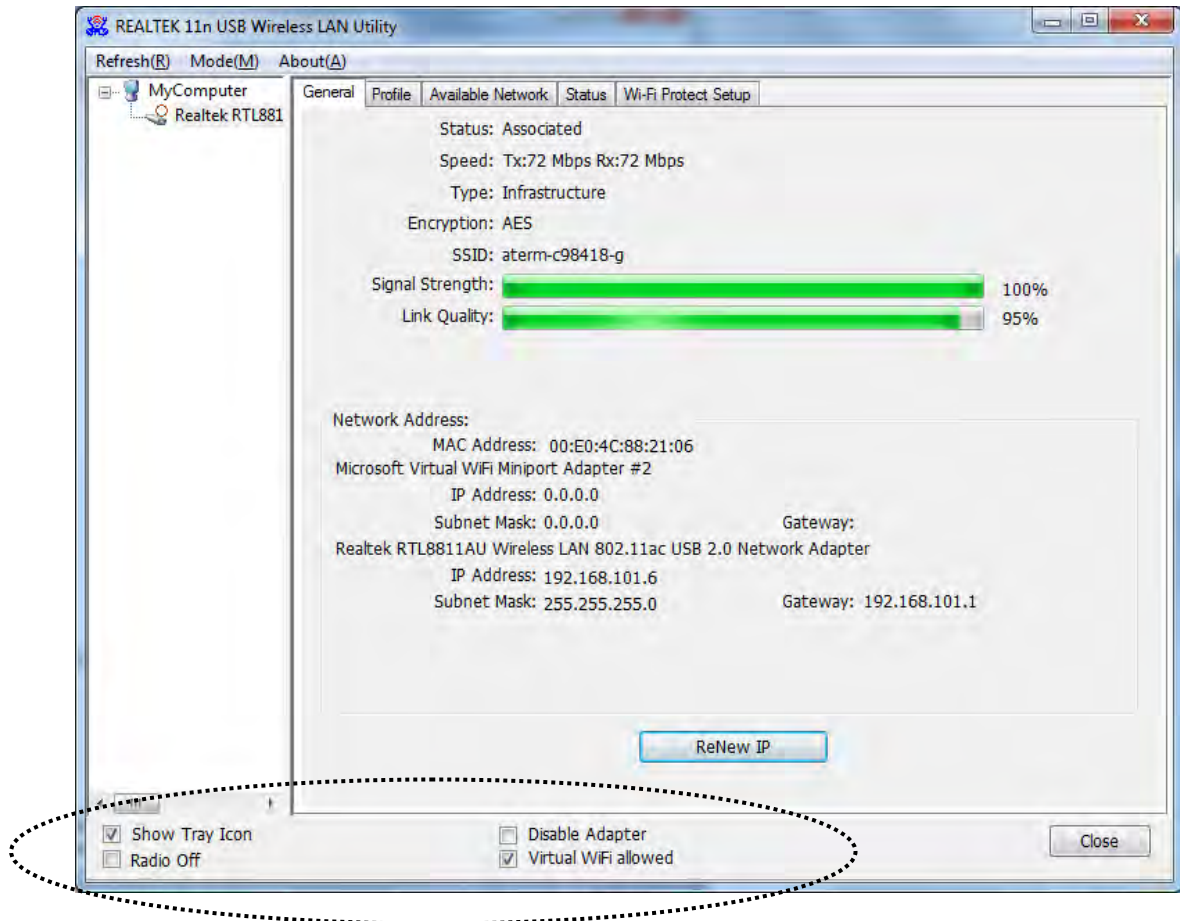
## 2-4-2 Status

If you want to know the status of your wireless network card, click 'Status' menu:

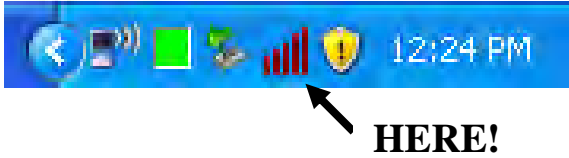


## 2-5 Miscellaneous Settings

There are few functions provided by Realtek configuration utility, you can access these functions from the bottom of configuration menu:



The descriptions of these function are listed as follow:

<p>Show Tray Icon</p>	<p>Check this box to show an icon on system tray.</p>  <p>Uncheck this box to hide it.</p>
<p>Radio Off</p>	<p>Switch wireless radio off. Wireless network functionalities are disabled.</p>

Disable Adapter	Disable wireless network adapter. All functionalities of configuration menu will disappear. To resume, uncheck 'Disable Adapter'.
Virtual WiFi Allowed	Use Virtual WiFi functions.

## 2-6 Establish secure connection with AP by WPS

Wi-Fi Protected Setup (WPS) is the latest wireless network technology which makes wireless network setup become very simple. If you have WPS-enabled wireless access point, and you want to establish a secure connection to it, you don't have to configure the wireless access point and setup data encryption by yourself. All you have to do is to go to the WPS setup page of this wireless card, click a button, and then press a specific button or enter a set of 8-digit code on the wireless access point you wish to establish a secure connection - just three simple steps!

For older wireless access points, it's possible to perform a firmware upgrade to become a WPS-enabled access point. Since they may not have a hardware button to press for WPS setup, you can use an alternative WPS setup method - input the pin code. Every WPS-compatible wireless network card support pin code configuration method; you can just input the code to wireless access point, and the wireless access point and wireless network card will do the rest for you.

This wireless network card is compatible with WPS. To use this function, the wireless access point you wish to connect to must support WPS function too. Now, please follow the following instructions to establish secure connection between WPS-enabled wireless access point and your wireless network card.

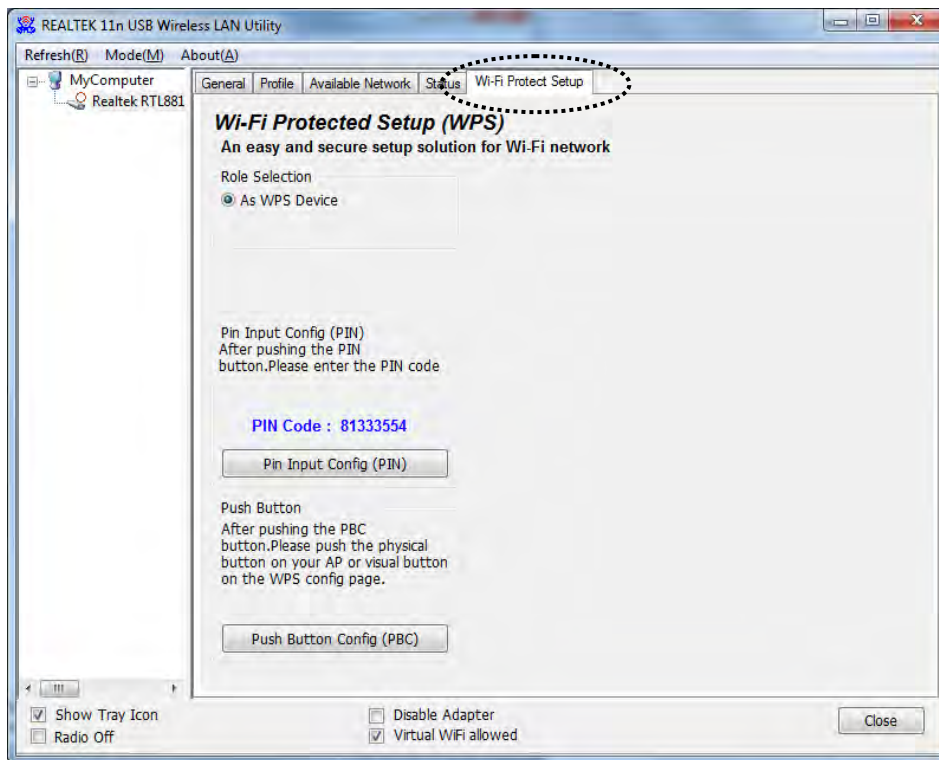
This wireless network card supports 2 kinds of WPS: PIN code and Push-Button.

Please follow the following instructions to setup WPS:

1. Right-click Realtek configuration utility icon, and click 'Open Config Utility'.



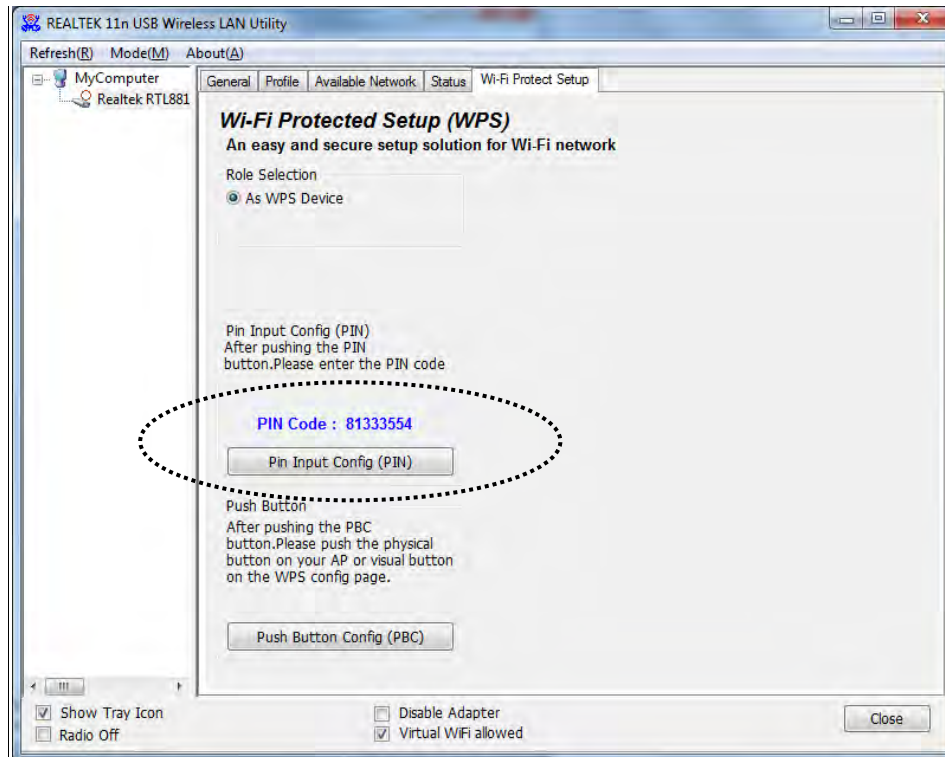
2. Click 'Wi-Fi Protect Setup' menu.



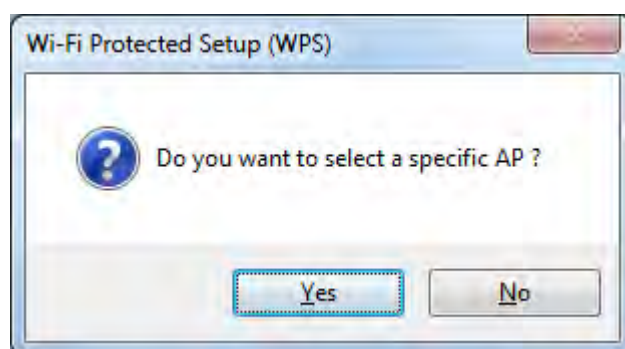
3. You can use PIN code or Push-Button configuration, and WPS-compatible wireless access point must use the same type of WPS. For instructions on setup each type of WPS, see next 2 chapters for detailed instructions.

## 2-6-1 PIN Code

To use PIN Code, please click ‘Pin Input Config (PIN)’ button:

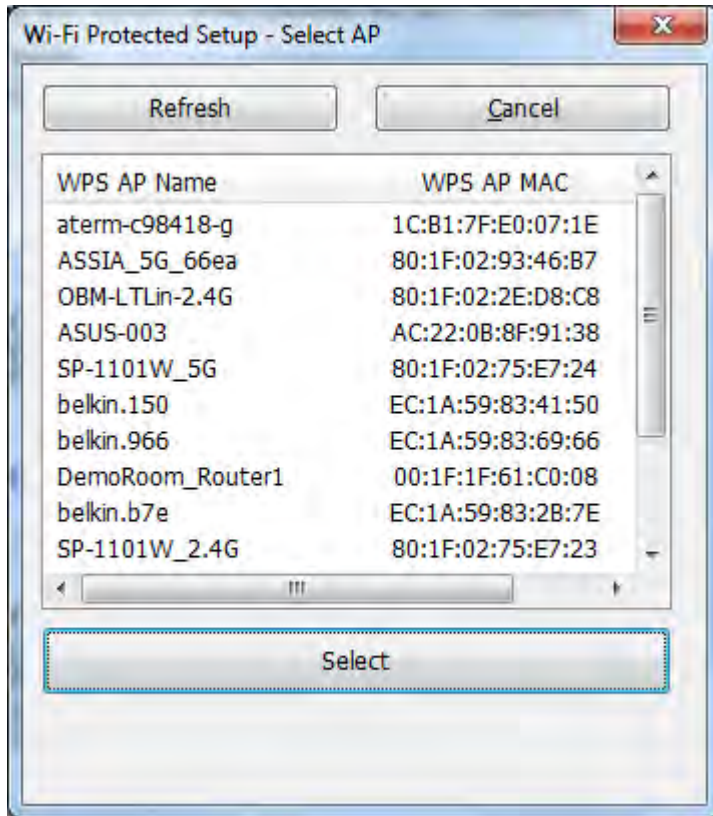


You’ll be prompted to select an access point you wish to connect. If you know its SSID, click ‘Yes’, otherwise click ‘No’.



If you select ‘Yes’, a list of all WPS-compatible AP nearby will be displayed; you can click ‘Refresh’ to rescan, then select an AP and click ‘Select’ button.

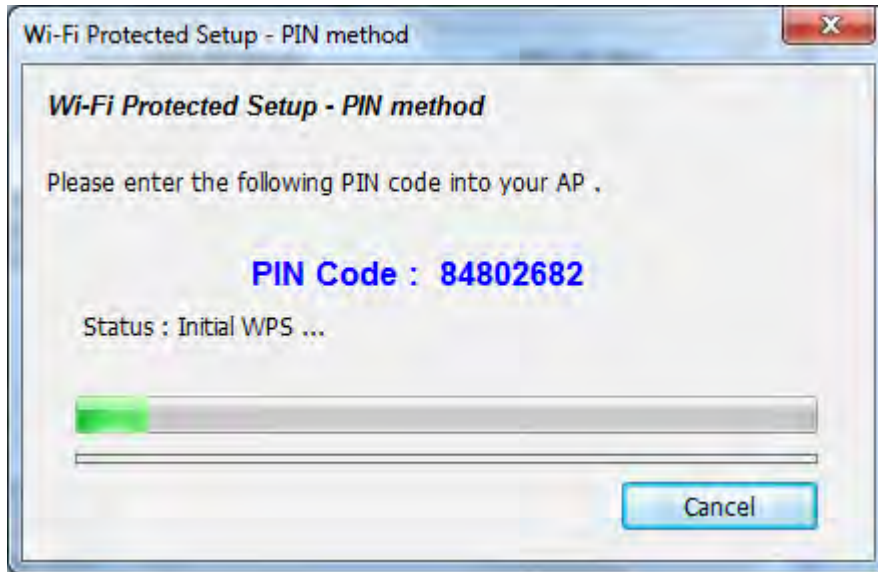




If you select 'No', wireless network card will prompt you to enter 8-digit PIN code into your AP, without selecting an AP in advance.

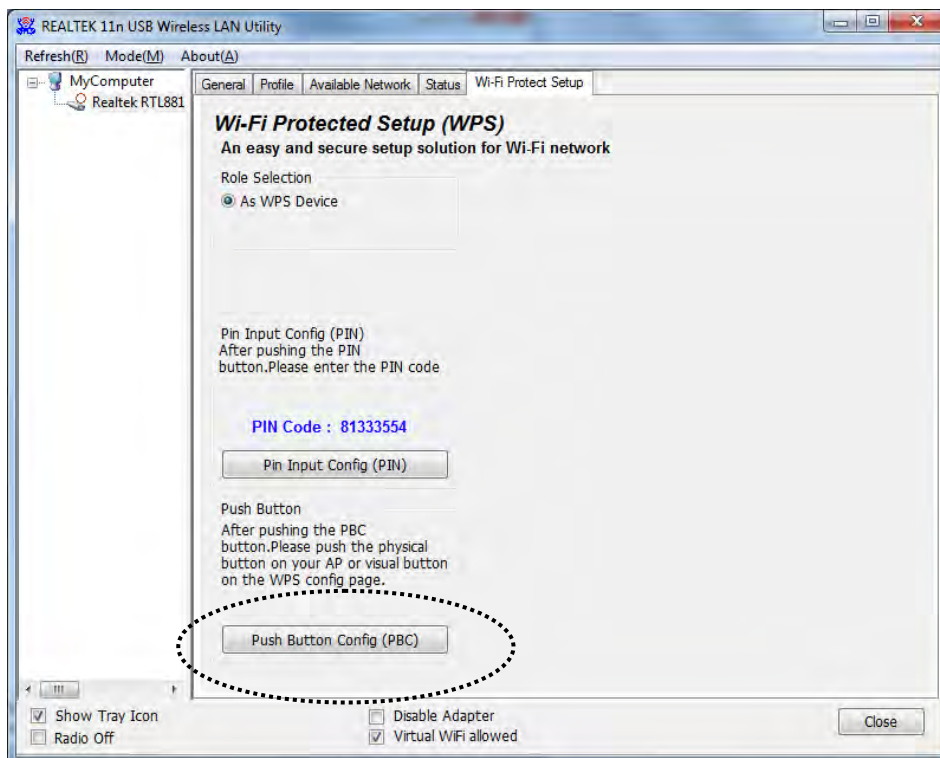
After you select 'Yes' or 'No' in previous step, network card will attempt to connect to WPS-compatible AP, and an 8-digit number will appear. Please input this number to AP's configuration menu within 2 minutes, and network card will establish secure connection with AP automatically.

To stop this procedure before connection is established, click 'Cancel'.

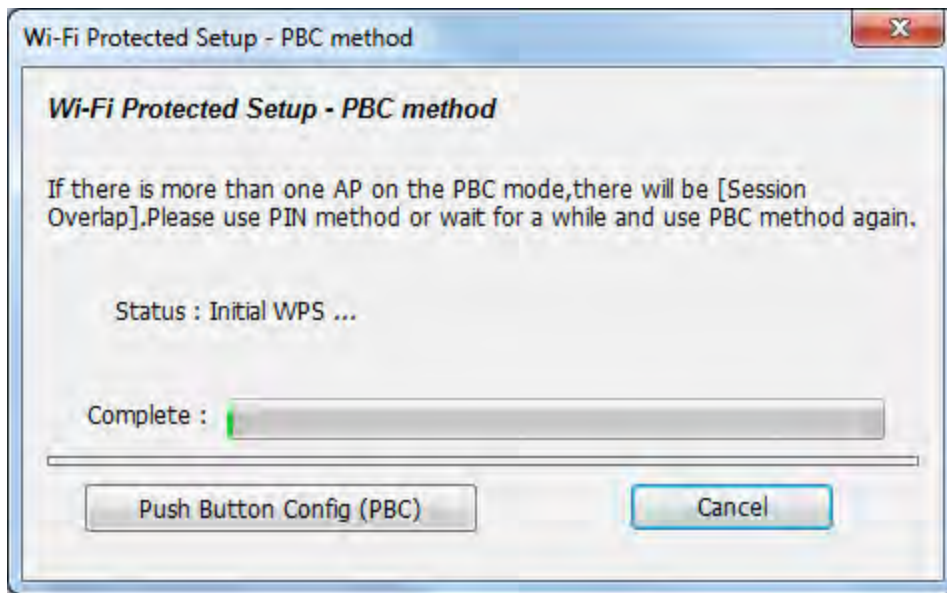


## 2-6-2 Push Button

To use Push-Button WPS configuration, please click 'Push Button Config (PBC)' button. This is the easiest way to establish secure connection by WPS, but if there're more than one WPS-compatible AP using Push-Button config, please use PIN Code instead.



After you click Push Button Config, a message box will appear:



Please activate Push-Button function on wireless access point now, and wireless network card will establish secure connection with access point within one minute.

## CHAPTER III: Soft-AP Function

Excepting become a wireless client of other wireless access points, this wireless card can act as a wireless service provider also! You can switch this wireless card's operating mode to 'AP' mode to simulate the function of a real wireless access point by software, and all other computers and wireless devices can connect to your computer wirelessly, even share the internet connection you have!

Please follow the instructions in following chapters to use the AP function of your wireless card.

### 3-1 Switch to AP Mode and Station Mode

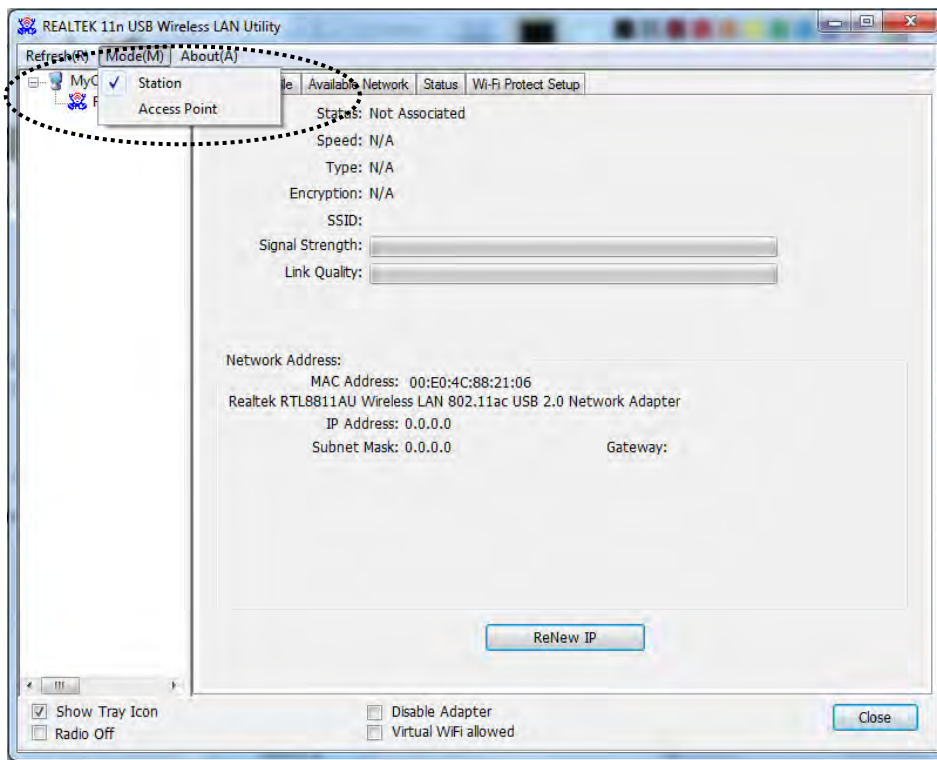
The operating mode of the wireless card is 'Station Mode' (becoming a client of other wireless access points) by default.

Please follow the following instructions to switch to AP mode:

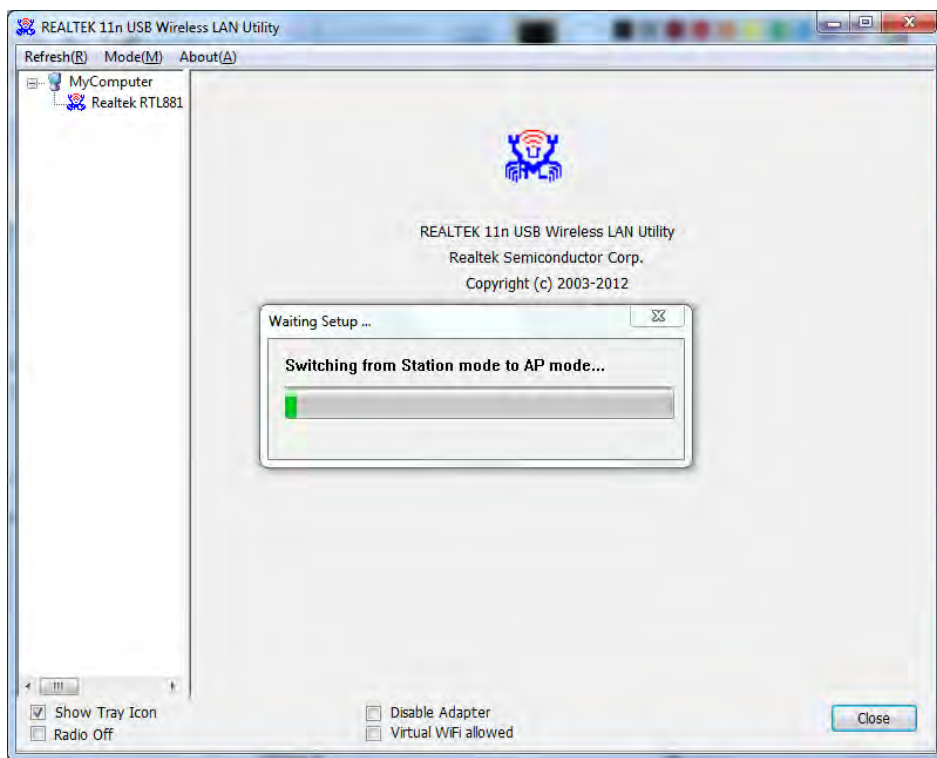
1. Right-click Realtek configuration utility icon, and click 'Open Config Utility'.



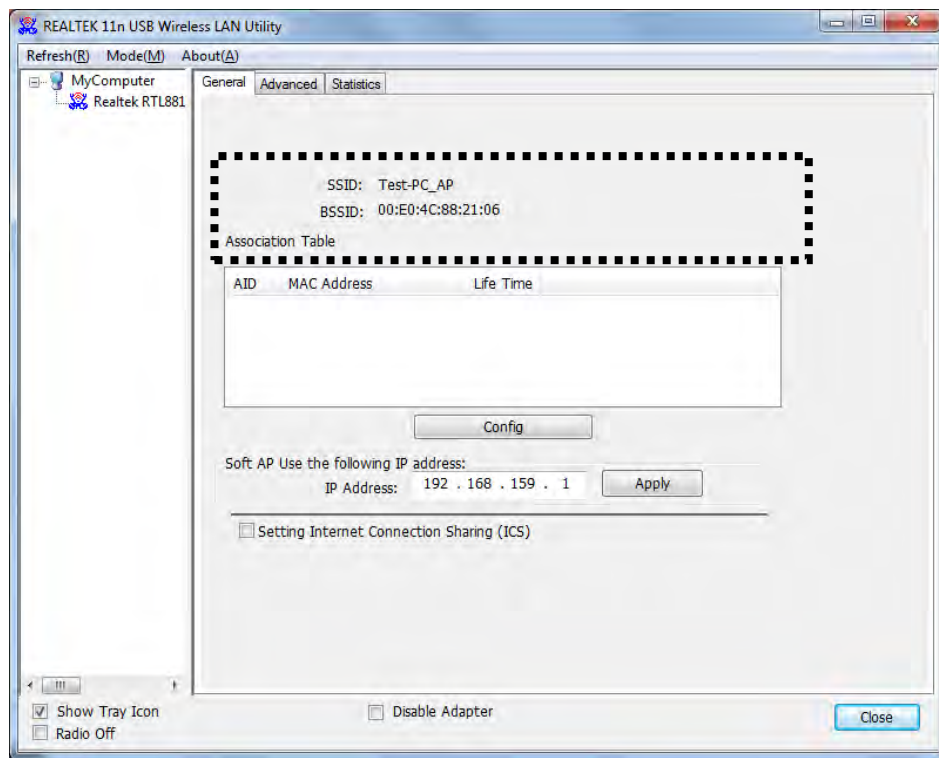
2. Select 'Mode', and then select 'Access Point'.



3. It requires few seconds to switch to AP mode, please be patient.

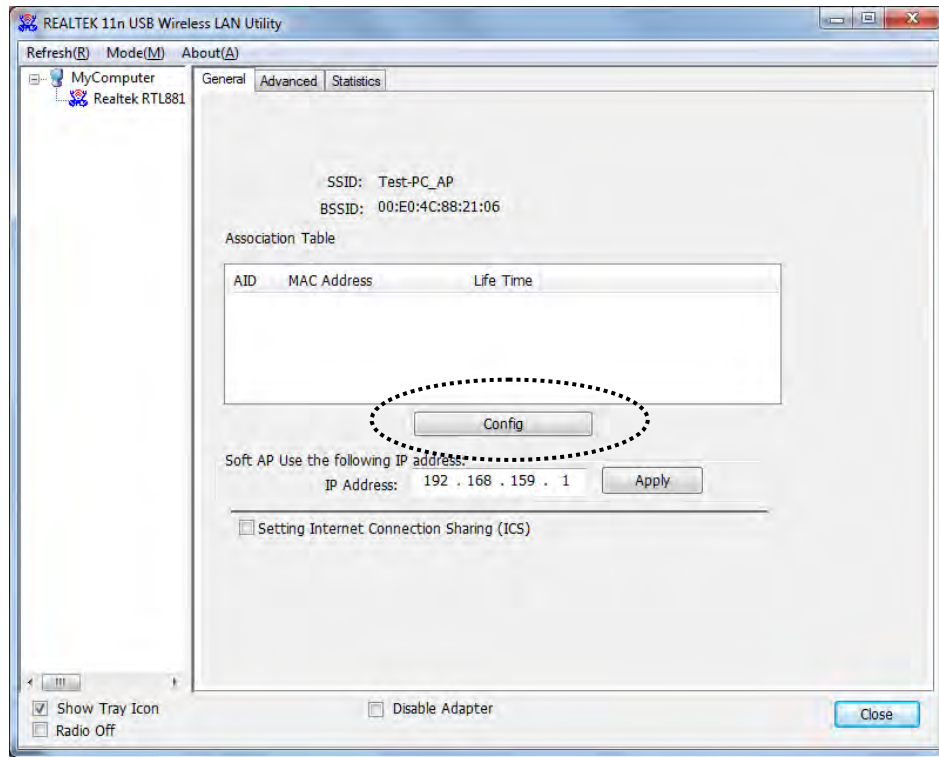


4. After mode switch is complete, you'll see general information of software AP, which shows AP's SSID and connected wireless clients.

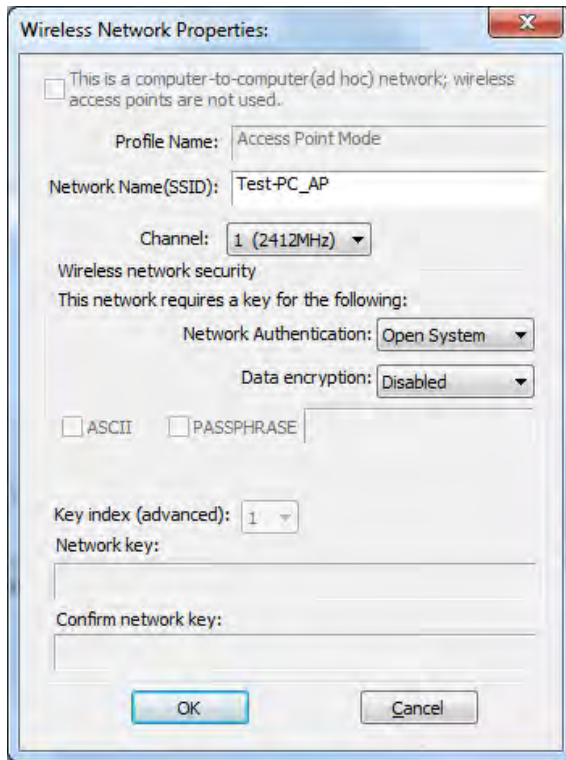


### 3-1-1 Configure SSID and Channel

To configure software AP, click 'Config' button:



The 'Wireless Network Properties' is displayed.



Please note that Ad-Hoc mode is not available when network card is in AP mode. The description of major setup items are listed below:

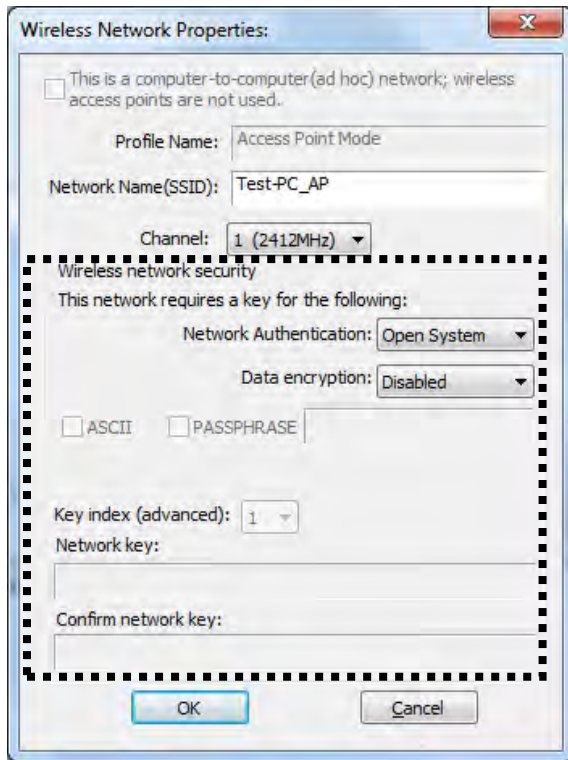
Network Name (SSID)	Please input the SSID (the name used to identify this wireless access point) here. Up to 32 numerical characters can be accepted here, excepting space.
Channel	Please select the wireless channel you wish to use, from 1 to 13.

To save changes, click 'OK'; otherwise click 'Cancel' to leave this menu and keep settings untouched.

### 3-1-2 Setup Soft-AP Security

To setup security options for Soft-AP, configure 'Wireless Network Security' section as follow:





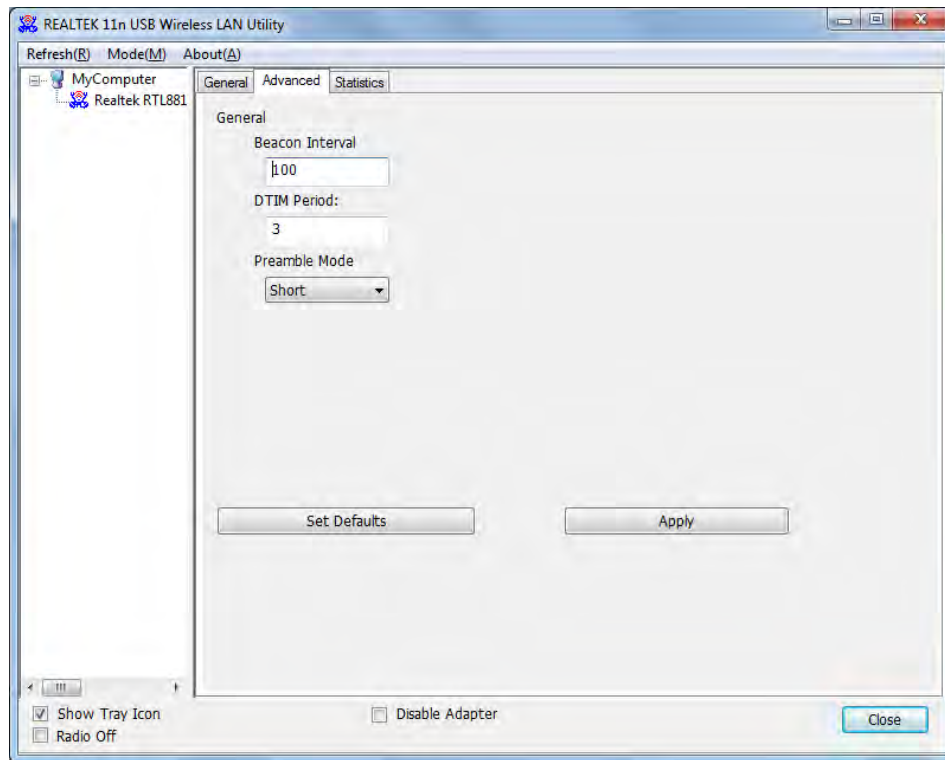
The description of setup items about wireless security are listed below:

Network Authentication	Select network authentication mode from dropdown menu.
Data Encryption	Select data encryption method from dropdown menu.
ASCII / PASSPHRASE	If the encryption method is WEP, check either 'ASCII' or 'PASSPHRASE' box and input it in the box as WEP passphrase.
Key Index	Select WEP key index (1-4). If you don't know which one you should use, select 1.
Network key / Confirm network key	IF network authentication mode is WPA, please input WPA passphrase in both box.

To save changes, click 'OK'; otherwise click 'Cancel' to leave this menu and keep settings untouched.

### 3-2 Advanced Settings

If you want to setup advanced settings of software access point, select ‘Advanced’ menu. If you don’t know the meaning and affects of these settings, keep them untouched.



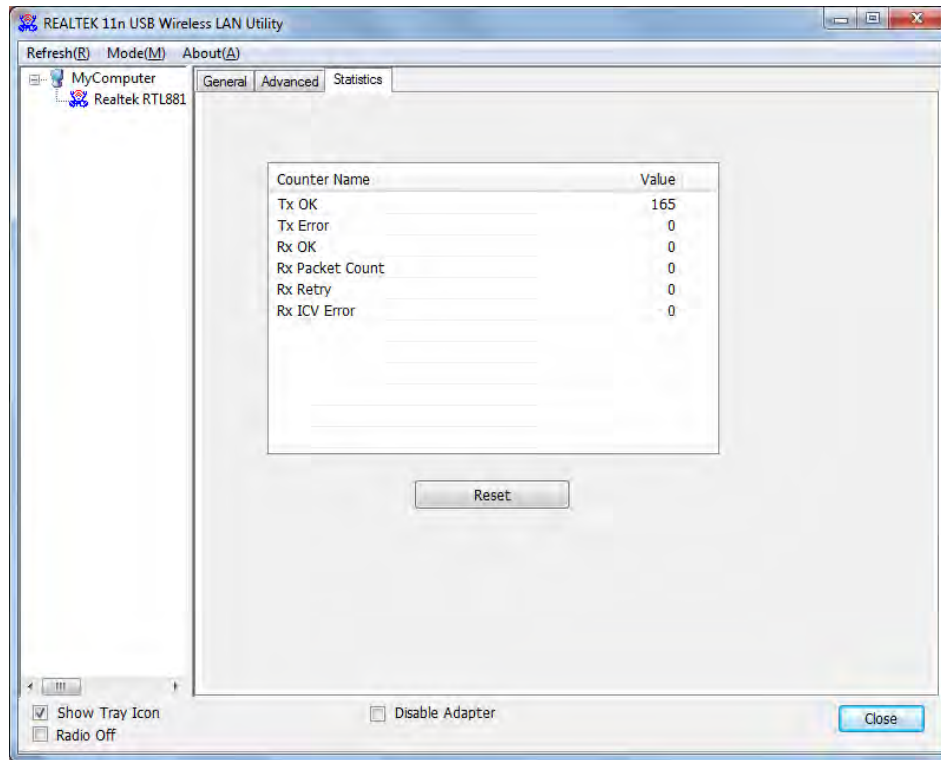
The description of all setup items are listed below:

Beacon Interval	Please input wireless beacon time interval here.
DTIM Period	Please input DTIM (Delivery Traffic Indication Message) here.
Preamble Mode	Select wireless frame preamble mode (long or short) from dropdown menu.
Set Defaults	Reset all settings back to factory default value.
Apply	Save changes.

If you changed any setting here and cause problem on communicating with wireless clients, click ‘Set Defaults’ to reset all settings back to default setting.

### 3-3 Wireless Statistics

Select 'Statistics' menu and the data statistics about software access point will be displayed.

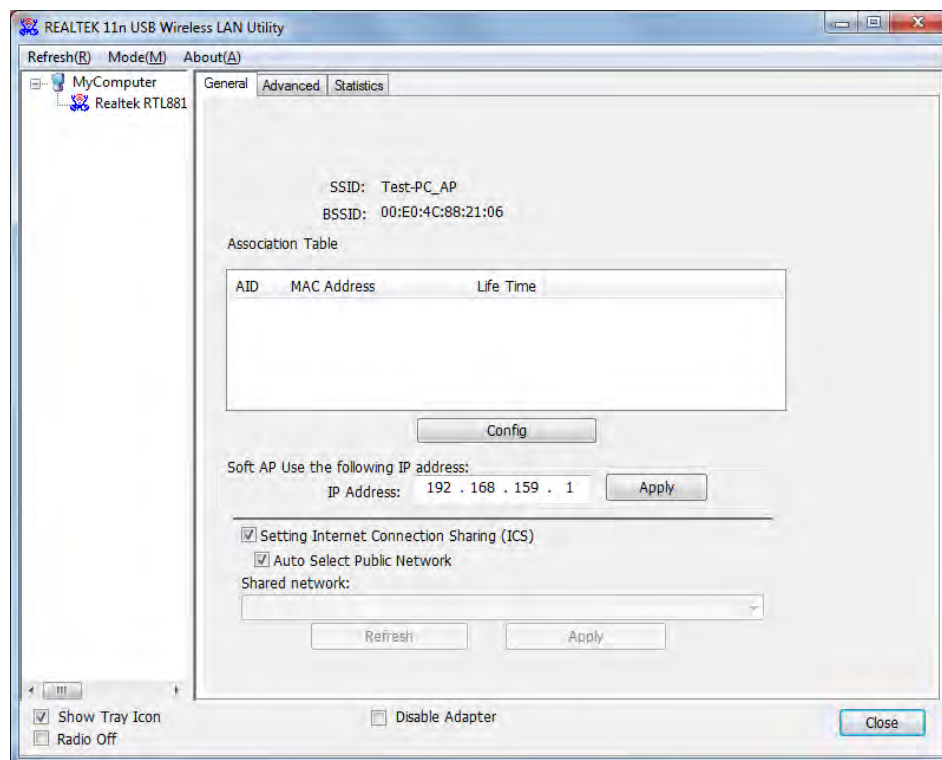


Click 'Reset' to reset the value of every item back to '0'.

### 3-4 Internet Connection Sharing (ICS)

In this page, you can assign a network card on your computer as the path for all wireless clients to get connected to Internet.

If you have only one network card (except this software access point), you don't have to select network card here; if you have more than one network card, select the one you wish to be used as Internet gateway.



Click 'Apply' to save changes ('Apply' is grayed out when no changes are made in this page).

## CHAPTER IV: Appendix

### 4-1 Hardware Specification

- Standards: IEEE 802.11a/b/g/n/ac
- Interface: USB 2.0 (USB 1.1 Compatible)
- Frequency Band:
  - 2.4000 ~ 2.4835GHz (Industrial Scientific Medical Band)
  - 5.1500 ~ 5.8250GHz (subject to local regulations)
- Data Rate:
  - 11a: 6/9/12/24/36/48/54Mbps
  - 11b: 1/2/5.5/11Mbps
  - 11g: 6/9/12/24/36/48/54Mbps
  - 11n (20MHz): MCS0-7 (up to 72Mbps)
  - 11n (40MHz): MCS0-7 (up to 150Mbps)
  - 11ac (80MHz): VHTMCS0-9,( up to 433Mbps)
- Securities: WEP 64/128, WPA, WPA2  
802.1x Support
- Antenna: Internal Printed Antenna (1T1R)
- Drivers: Windows XP/7/8
- LED: Link/Activity
- Dimension: 8(H) x 16(W) x 35.5(D) mm
- Temperature: 32~104°F (0 ~ 40°C)
- Humidity: 10-95% (NonCondensing)

## 4-2 Troubleshooting

If you encounter any problem when you're using this wireless network card, don't panic! Before you call your dealer of purchase for help, please check this troubleshooting table, the solution of your problem could be very simple, and you can solve the problem by yourself!

Scenario	Solution
I can't find any wireless access point / wireless device in 'Site Survey' function.	<ol style="list-style-type: none"> <li>1. Click 'Rescan' for few more times and see if you can find any wireless access point or wireless device.</li> <li>2. Please move closer to any known wireless access point.</li> <li>3. 'Ad hoc' function must be enabled for the wireless device you wish to establish a direct wireless link.</li> <li>4. Please adjust the position of network card (you may have to move your computer if you're using a notebook computer) and click 'Rescan' button for few more times. If you can find the wireless access point or wireless device you want to connect by doing this, try to move closer to the place where the wireless access point or wireless device is located.</li> </ol>
Nothing happens when I click 'Open Config Utility'	<ol style="list-style-type: none"> <li>1. Please make sure the wireless network card is inserted into your computer's USB port.</li> <li>2. Reboot the computer and try again.</li> <li>3. Remove the card and insert it into another USB port.</li> <li>4. Remove the driver and re-install.</li> <li>5. Contact the dealer of purchase for help.</li> </ol>
I can not establish connection with a certain wireless access point	<ol style="list-style-type: none"> <li>1. Click 'Add to Profile' for few more times.</li> <li>2. If the SSID of access point you wish to</li> </ol>

	<p>connect is hidden (nothing displayed in 'SSID' field in 'Site Survey' function), you have to input correct SSID of the access point you wish to connect. Please contact the owner of access point to ask for correct SSID.</p> <ol style="list-style-type: none"> <li>3. You have to input correct passphrase / security key to connect an access point with encryption. Please contact the owner of access point to ask for correct passphrase / security key.</li> <li>4. The access point you wish to connect only allows network cards with specific MAC address to establish connection. Please go to 'Status' menu and write the value of 'MAC Address' down, then present this value to the owner of access point so he / she can add the MAC address of your network card to his / her access point's list.</li> </ol>
<p>The network is slow / having problem when transferring large files</p>	<ol style="list-style-type: none"> <li>1. Move closer to the place where access point is located.</li> <li>2. There could be too much people using the same radio channel. Ask the owner of the access point to change the channel number.</li> </ol> <p>Please try one or more solutions listed above.</p>

## 4-3 Glossary

### 1. What is the IEEE 802.11g standard?

802.11g is the new IEEE standard for high-speed wireless LAN communications that provides for up to 54 Mbps data rate in the 2.4 GHz band. 802.11g is quickly becoming the next mainstream wireless LAN technology for the home, office and public networks. 802.11g defines the use of the same OFDM modulation technique specified in IEEE 802.11a for the 5 GHz frequency band and applies it in the same 2.4 GHz frequency band as IEEE 802.11b. The 802.11g standard requires backward compatibility with 802.11b.

The standard specifically calls for:

- A. A new physical layer for the 802.11 Medium Access Control (MAC) in the 2.4 GHz frequency band, known as the extended rate PHY (ERP). The ERP adds OFDM as a mandatory new coding scheme for 6, 12 and 24 Mbps (mandatory speeds), and 18, 36, 48 and 54 Mbps (optional speeds). The ERP includes the modulation schemes found in 802.11b including CCK for 11 and 5.5 Mbps and Barker code modulation for 2 and 1 Mbps.
- B. A protection mechanism called RTS/CTS that governs how 802.11g devices and 802.11b devices interoperate.

### 2. What is the IEEE 802.11b standard?

The IEEE 802.11b Wireless LAN standard subcommittee, which formulates the standard for the industry. The objective is to enable wireless LAN hardware from different manufactures to communicate.

### 3. What does IEEE 802.11 feature support?

The product supports the following IEEE 802.11 functions:

- CSMA/CA plus Acknowledge Protocol
- Multi-Channel Roaming
- Automatic Rate Selection
- RTS/CTS Feature
- Fragmentation
- Power Management

### 4. What is Ad-hoc?

An Ad-hoc integrated wireless LAN is a group of computers, each has a Wireless LAN card, Connected as an independent wireless LAN. Ad hoc wireless LAN is applicable at a departmental scale for a branch or SOHO operation.



**5. What is Infrastructure?**

An integrated wireless and wireless and wired LAN is called an Infrastructure configuration. Infrastructure is applicable to enterprise scale for wireless access to central database, or wireless application for mobile workers.

**6. What is BSS ID?**

A specific Ad hoc LAN is called a Basic Service Set (BSS). Computers in a BSS must be configured with the same BSS ID.

**7. What is WEP?**

WEP is Wired Equivalent Privacy, a data privacy mechanism based on a 40 bit shared key algorithm, as described in the IEEE 802 .11 standard.

**8. What is TKIP?**

TKIP is a quick-fix method to quickly overcome the inherent weaknesses in WEP security, especially the reuse of encryption keys. TKIP is involved in the IEEE 802.11i WLAN security standard, and the specification might be officially released by early 2003.

**9. What is AES?**

AES (Advanced Encryption Standard), a chip-based security, has been developed to ensure the highest degree of security and authenticity for digital information, wherever and however communicated or stored, while making more efficient use of hardware and/or software than previous encryption standards. It is also included in IEEE 802.11i standard. Compare with AES, TKIP is a temporary protocol for replacing WEP security until manufacturers implement AES at the hardware level.

**10. Can Wireless products support printer sharing?**

Wireless products perform the same function as LAN products. Therefore, Wireless products can work with Netware, Windows 2000, or other LAN operating systems to support printer or file sharing.

**11. Would the information be intercepted while transmitting on air?**

WLAN features two-fold protection in security. On the hardware side, as with Direct Sequence Spread Spectrum technology, it has the inherent security feature of scrambling. On the software side, WLAN series offer the encryption function (WEP) to enhance security and Access Control. Users can set it up depending upon their needs.

**12. What is DSSS? What is FHSS? And what are their differences?**

Frequency-hopping spread-spectrum (FHSS) uses a narrowband carrier that changes frequency in a pattern that is known to both transmitter and receiver. Properly synchronized, the net effect is to maintain a single logical channel. To an unintended receiver, FHSS appears to be short-duration impulse noise. Direct-sequence spread-spectrum (DSSS) generates a redundant bit pattern for each bit to be transmitted. This bit pattern is called a chip (or chipping code). The longer the chip is, the greater the probability that the original data can be recovered. Even if one or more bits in the chip are damaged during transmission, statistical techniques embedded in the radio can recover the original data without-the need for retransmission. To an unintended receiver, DSSS appears as low power wideband noise and is rejected (ignored) by most narrowband receivers.

**13. What is Spread Spectrum?**

Spread Spectrum technology is a wideband radio frequency technique developed by the military for use in reliable, secure, mission-critical communication systems. It is designed to trade off bandwidth efficiency for reliability, integrity, and security. In other words, more bandwidth is consumed than in the case of narrowband transmission, but the trade off produces a signal that is, in effect, louder and thus easier to detect, provided that the receiver knows the parameters of the spread-spectrum signal being broadcast. If a receiver is not tuned to the right frequency, a spread –spectrum signal looks like background noise. There are two main alternatives, Direct Sequence Spread Spectrum (DSSS) and Frequency Hopping Spread Spectrum (FHSS).

**14. What is WPS?**

WPS stands for Wi-Fi Protected Setup. It provides a simple way to establish unencrypted or encrypted connections between wireless clients and access point automatically. User can press a software or hardware button to activate WPS function, and WPS-compatible wireless clients and access point will establish connection by themselves. There are two types of WPS: PBC (Push-Button Configuration) and PIN code.



# EW-7811UAC/DAC

## Quick Installation Guide

11-2013/ v1.1

---

### **Edimax Technology Co., Ltd.**

No.3, Wu-Chuan 3rd Road, Wu-Gu, New Taipei City 24891, Taiwan

Email: [support@edimax.com.tw](mailto:support@edimax.com.tw)

---

### **Edimax Technology Europe B.V.**

Nijverheidsweg 25, 5683 CJ Best, The Netherlands

Email: [support@edimax.nl](mailto:support@edimax.nl)

---

### **Edimax Computer Company**

3350 Scott Blvd., Bldg.15 Santa Clara, CA 95054, USA

Live Tech Support: 1(800) 652-6776

Email: [support@edimax.com](mailto:support@edimax.com)

<b>I. Product Information .....</b>	<b>4</b>
I-1. Package Contents .....	4
I-2. LED Status .....	4
I-3. System Requirements .....	5
I-4. Safety .....	5
<b>II. Installation .....</b>	<b>6</b>
<b>III. Windows .....</b>	<b>8</b>
III-1. Driver Installation .....	8
III-2. Driver Uninstallation .....	10
III-2-1. Windows XP/Vista/7 .....	10
III-2-2. Windows 8 .....	11
<b>IV. Mac OS .....</b>	<b>12</b>
IV-1. Driver Installation .....	12
IV-2. Driver Uninstallation .....	18
<b>V. Linux.....</b>	<b>19</b>
V-1. Driver Installation .....	19
V-1. Driver Uninstallation .....	23
<b>VI. Disabling Network Adapters .....</b>	<b>24</b>
V-1. Windows XP .....	24
VI-2. Windows Vista .....	24
VI-3. Windows 7 .....	25
VI-4. Windows 8 .....	26
VI-5. Mac .....	27
VI-6. Linux.....	28
<b>VII. Using The Adapter .....</b>	<b>29</b>
VII-1. Windows .....	29
VII-2. Mac: Connect to a Wi-Fi network.....	30
VII-3. Mac: Wireless Utility.....	32
VII-3-1. Link Status .....	32
VII-3-2. Profiles .....	33
VII-3-3. Available Network.....	34
VII-3-4. WPS .....	35
VII-3-5. Information .....	36
VII-4. WPS Setup.....	36

**Federal Communication Commission Interference Statement ..... 38**

**R&TTE Compliance Statement ..... 38**

**Multi-Language Quick Installation Guide (QIG) on the CD**

**Čeština:** Českého průvodce rychlou instalací naleznete na přiloženém CD s ovladači

**Deutsch:** Finden Sie bitte das deutsche S.A.L. beiliegend in der Treiber CD

**Español:** Incluido en el CD el G.R.I. en Español.

**Français:** Veuillez trouver l'français G.I.R ci-joint dans le CD

**Italiano:** Incluso nel CD il Q.I.G. in Italiano.

**Magyar:** A magyar telepítési útmutató megtalálható a mellékelt CD-n

**Nederlands:** De nederlandse Q.I.G. treft u aan op de bijgesloten CD

**Polski:** Skrócona instrukcja instalacji w języku polskim znajduje się na załączonej płycie CD

**Português:** Incluído no CD o G.I.R. em Portugues

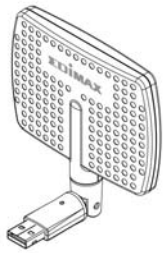
**Русский:** Найдите Q.I.G. на русском языке на приложенном CD

**Türkçe:** Ürün ile beraber gelen CD içinde Türkçe Hızlı Kurulum Kılavuzu'nu bulabilirsiniz

**Українська:** Для швидкого налаштування Вашого пристрою, будь ласка, ознайомтесь з інструкцією на CD

# I. Product Information

## I-1. Package Contents



**EW-7811DAC**



**or EW-7811UAC**



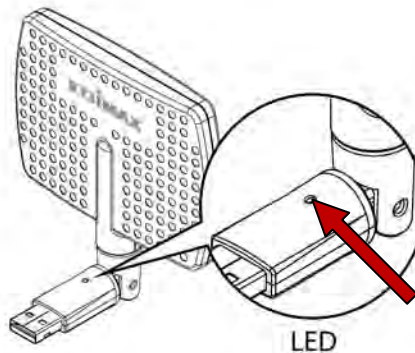
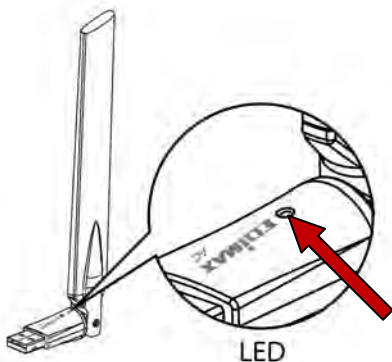
**QIG**



**CD-ROM**

## I-2. LED Status

LED	LED Status	Description
WLAN	On	Wireless activity: transmitting or receiving data.
	Off	No wireless activity.



### **I-3. System Requirements**

- Windows 2000/XP/Vista/7/8/8.1, Mac OS X 10.4-10.9, Linux
- USB 2.0 Port
- Hard Disk: 100MB
- CD-ROM Drive

### **I-4. Safety**

In order to ensure the safe operation of the device and its users, please read and act in accordance with the following safety instructions.

- 1.** The wireless adapter is designed for indoor use only; do not place the wireless extender outdoors.
- 2.** Do not place the wireless adapter in or near hot/humid places, such as a kitchen or bathroom.
- 3.** The wireless adapter contains small parts that are a danger to small children under 3 years old. Please keep the wireless adapter out of reach of children.
- 4.** Do not place the wireless adapter on paper, cloth, or other flammable materials. The wireless adapter will become hot during use.
- 5.** There are no user-serviceable parts inside the wireless adapter. If you experience problems with the wireless adapter, please contact your dealer of purchase and ask for help.
- 6.** The wireless adapter is an electrical device and as such, if it becomes wet for any reason, stop using it immediately. Contact an experienced electrical technician for further help.
- 7.** If you smell burning or see smoke coming from the wireless adapter then unplug the adapter immediately, as far as it is safely possible to do so. Call your dealer of purchase for help.

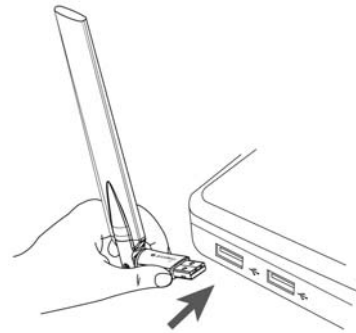
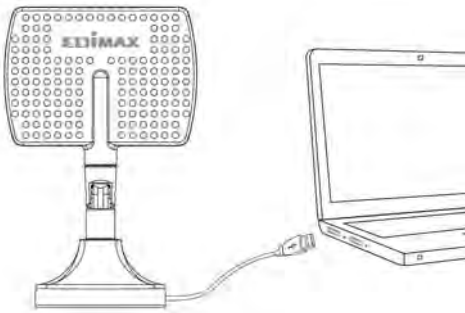
## II. Installation

---

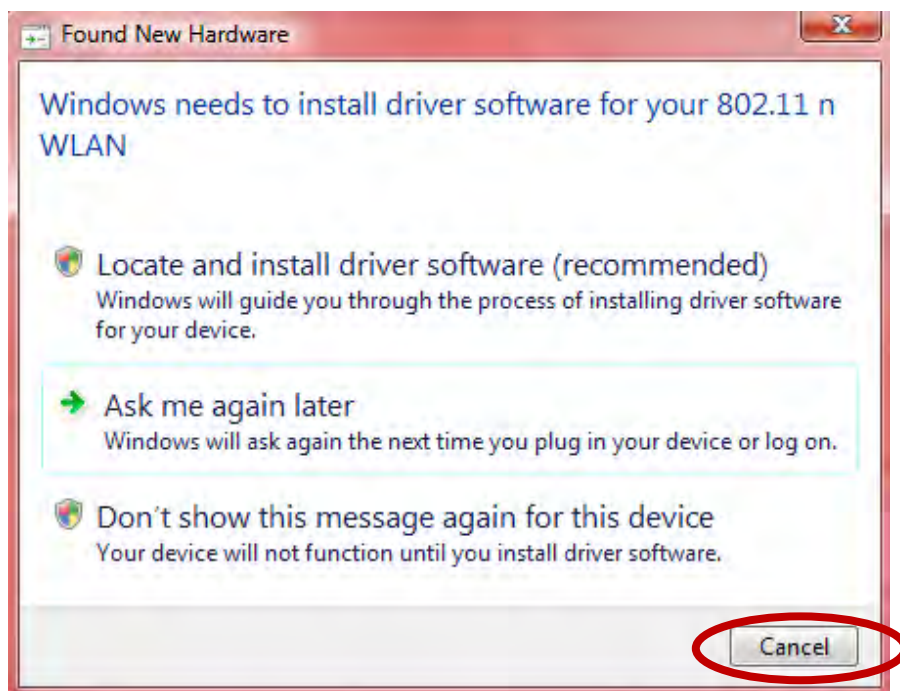
1. Switch on your computer and insert the USB adapter into an available USB port of your computer.



**Never use force to insert the USB adapter.**



2. If a Hardware Wizard/Driver Installation window opens as shown below, please click “Cancel” or “Close”.





3. Insert the included CD-ROM into the CD drive of your computer.
4. For **Windows** users the setup wizard will open. For **Mac** users the CD's "Mac" folder will open.



*If the CD doesn't auto-run or if you downloaded the setup wizard, please browse to the "Autorun" or "Mac" folder of the CD for Windows or Mac users respectively.*

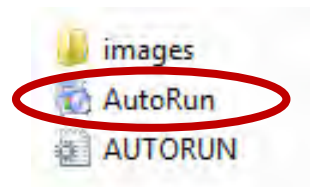
5. Please follow the instructions in the appropriate chapter for your operating system.

### III. Windows

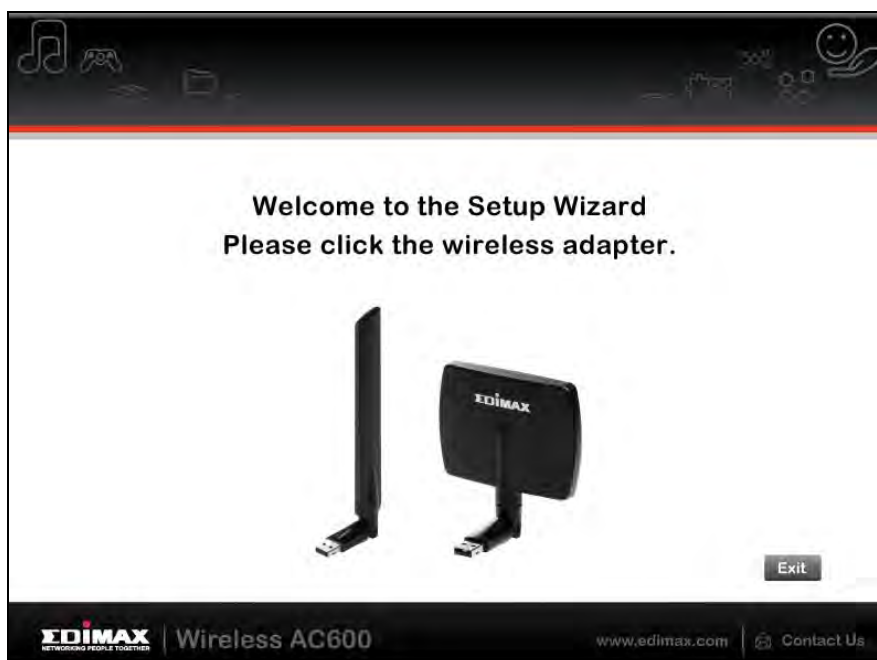
#### III-1. Driver Installation



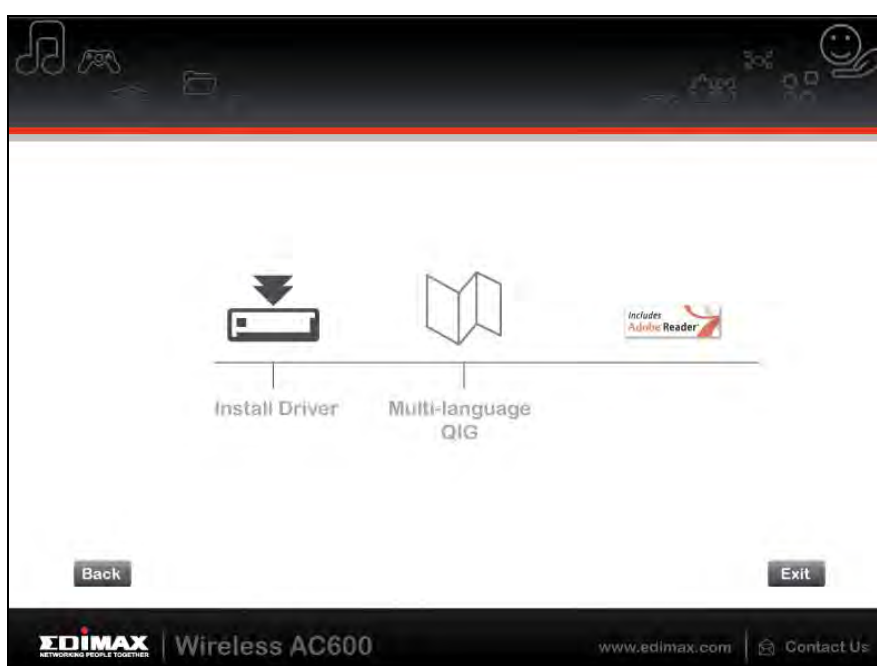
*If the CD didn't auto-run, please open the "Autorun.exe" file to start the setup wizard.*



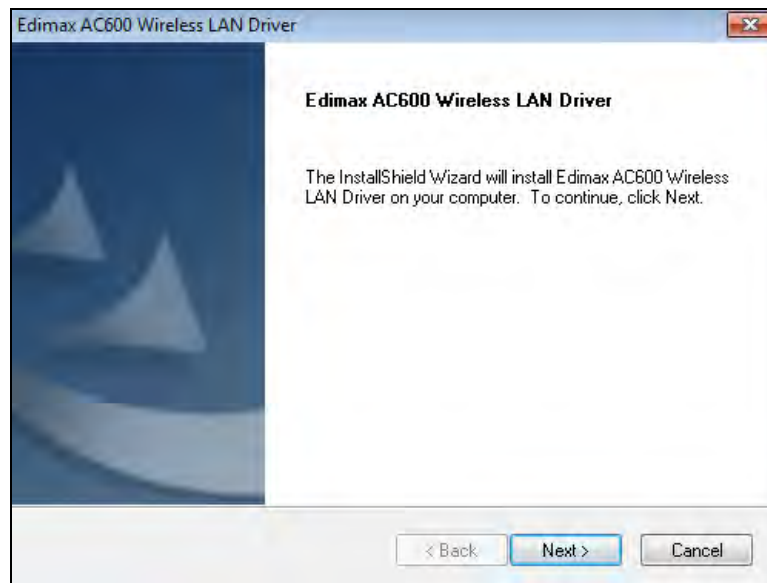
1. Click the EW-7811UAC/DAC wireless USB adapter to continue.



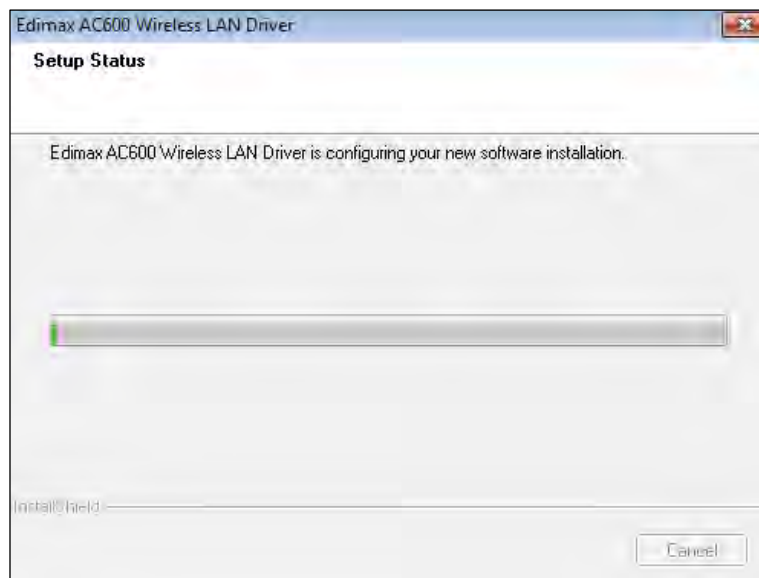
2. Click "Install Driver" to install the drivers for your EW-7811UAC/DAC.



3. Please wait until the installation wizard is ready and then click “Next” to continue.



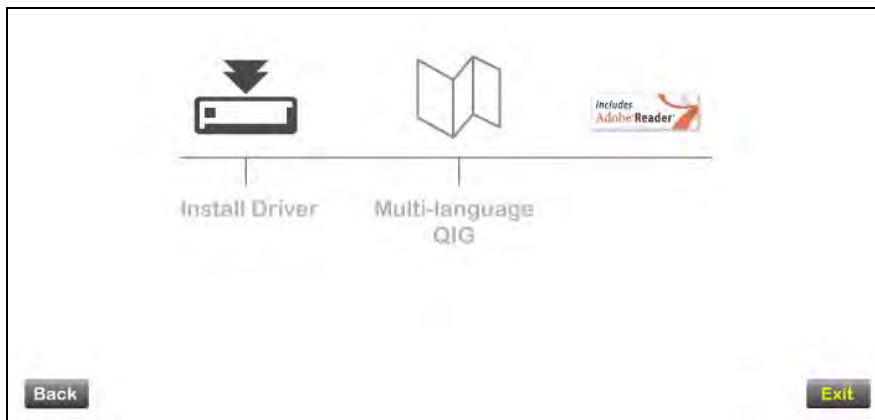
4. Please wait while the driver is installing.



5. When the installation is complete, click “Finish”.



**6.** Click “Exit” to close the setup wizard.



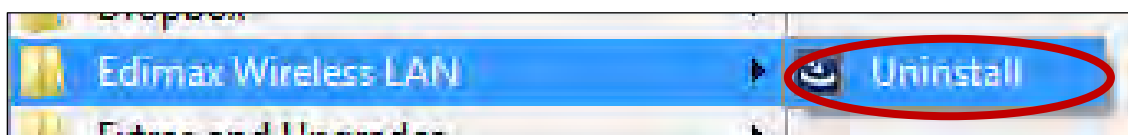
***The multi-language QIG is also included on the CD-ROM. To open it click “Multi-language QIG”.***

**7.** Windows users can connect to an available Wi-Fi network as usual. For guidance on doing so, please refer to **VII. Using The Adapter.**

## III-2. Driver Uninstallation

### III-2-1. Windows XP/Vista/7

**1.** Go to **Start > Programs > Edimax Wireless LAN > Uninstall**



2. Follow the on screen instructions. An uninstall wizard will guide you through the process.

### III-2-2. Windows 8/8.1

1. Right click anywhere on the “Start” screen and then click the “All apps” icon in the bottom right corner.



2. Locate the Edimax Wireless LAN category, select “Uninstall” and follow the on-screen instructions.



## IV. Mac OS

---

### IV-1. Driver Installation

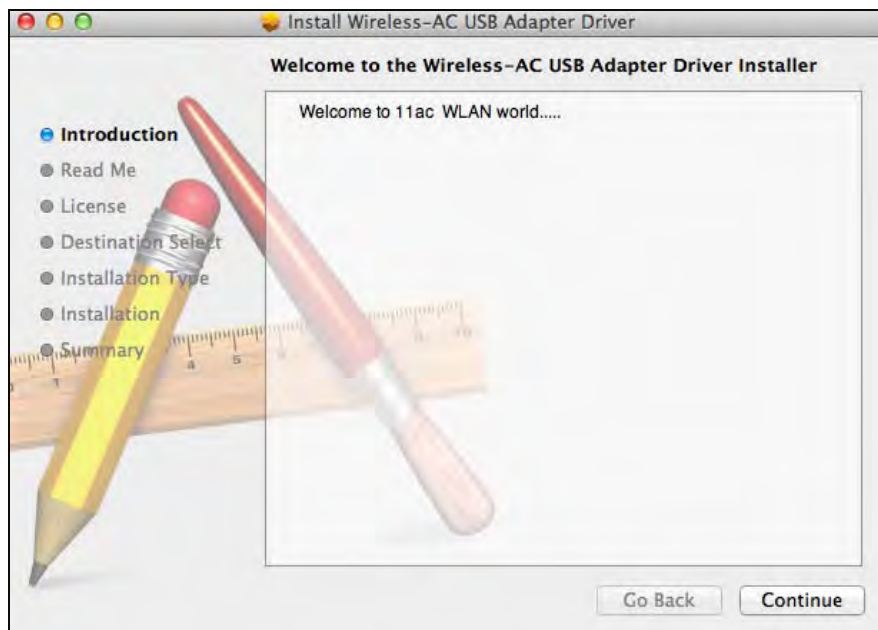


**Ensure you select the correct folder for your version of Mac OS. To check your version of Mac OS, click the Apple logo in the top left corner of your desktop and go to “About This Mac”.**


1. Open the “Wlan\_11ac\_USB\_MacOS10...” folder for your version of Mac OS X (10.4 - 10.8) and double click the “Installer.pkg” file to open the driver installation wizard.



2. Click “Continue” to proceed to the next step.

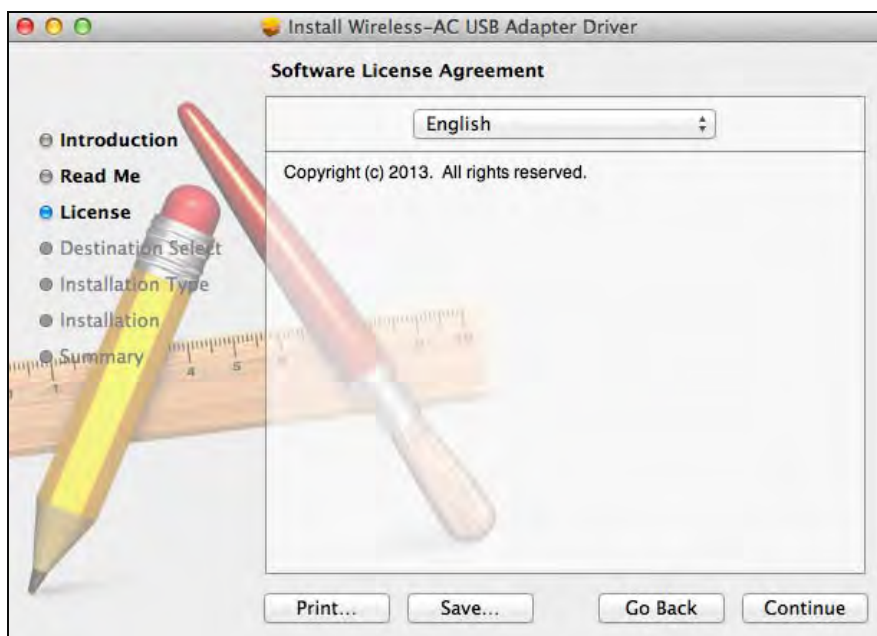


3. The next screen displays important information, please read it carefully (after the driver is installed, you need to enable the wireless adapter in “System Preferences → Network”. You can click “Print” or “Save” to print/save this information if you need or the instructions are repeated in **Step. 13**) Click “Continue” when you are ready to continue.

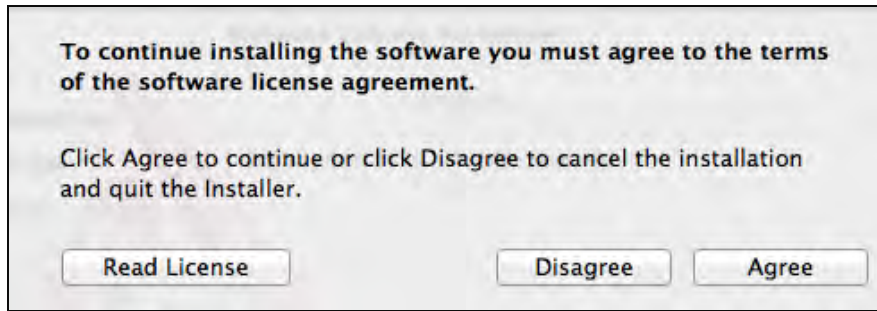
 **If you have already have an older version of the software installed on your computer, please uninstall it before you continue.**



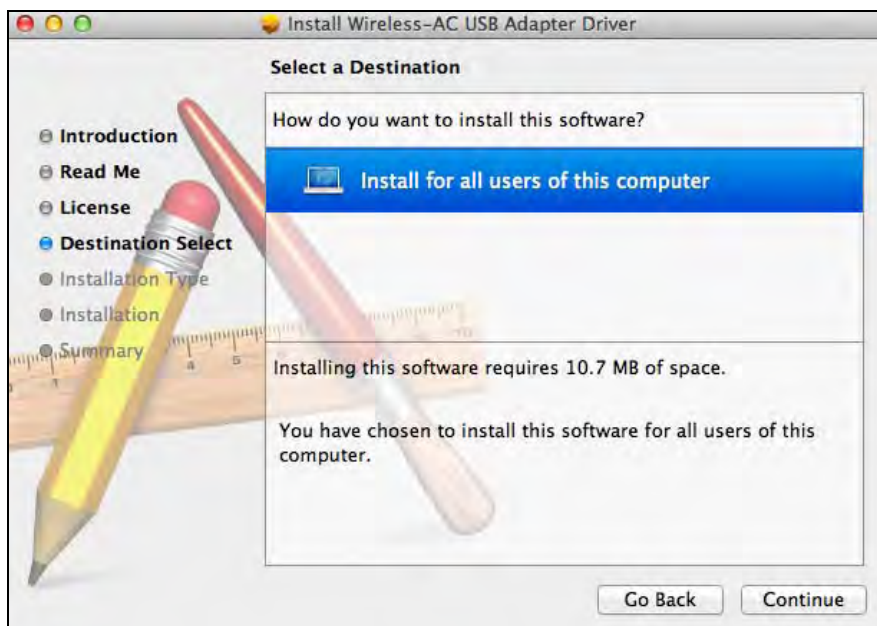
**4.** Select a language (the default language is English) and click “Continue” to install the driver.



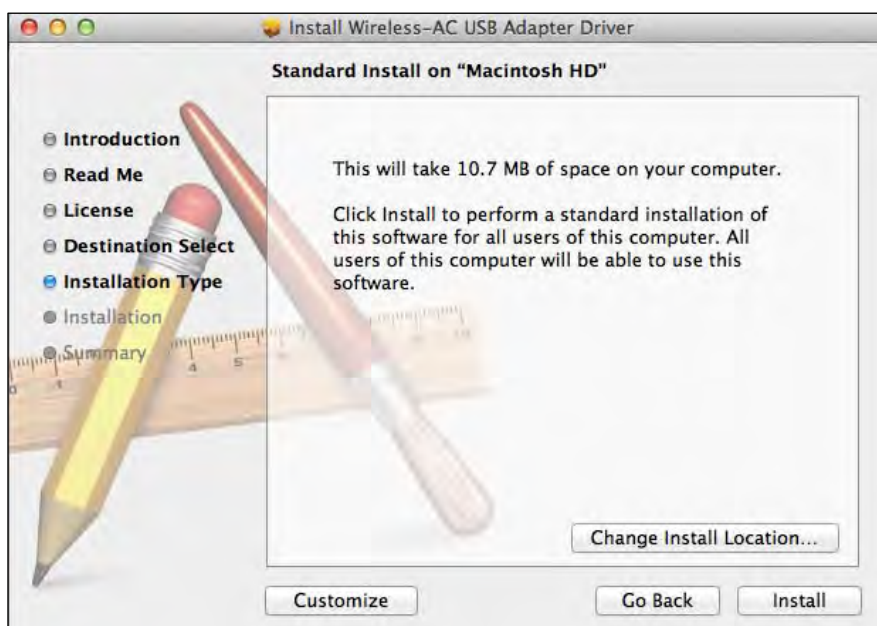
**5.** To read the software license click “Read License” and then click “Agree” to confirm you agree to the terms. You must agree to the terms to continue installing the software.



6. If prompted, select which user to install the software for and click “Continue”.



7. Click “Install” to install the driver.

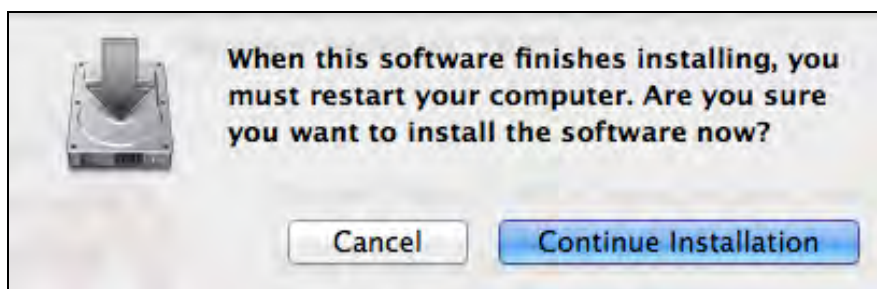




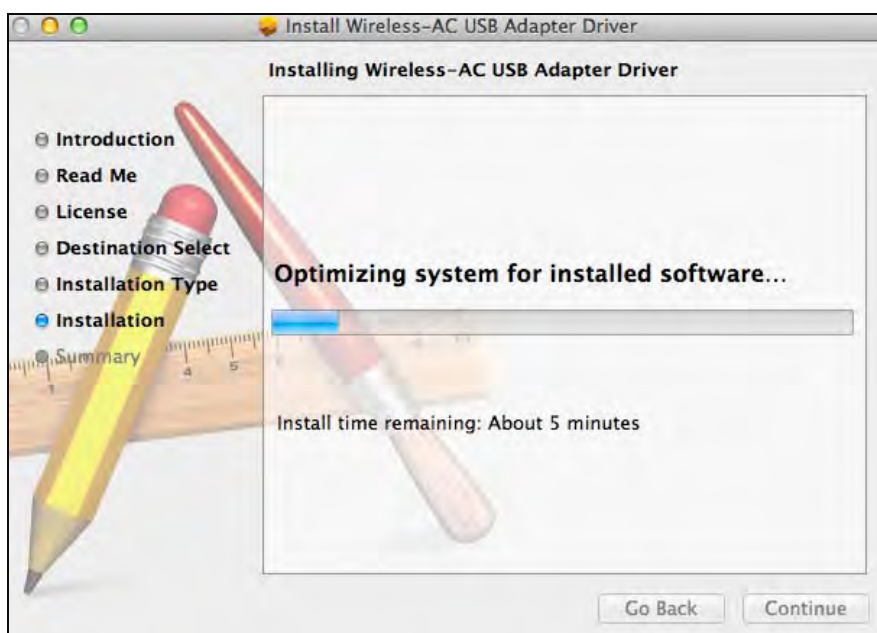
8. You may be prompted to enter your system/administrative password before the installation can begin. Enter your password and click “Install Software”.



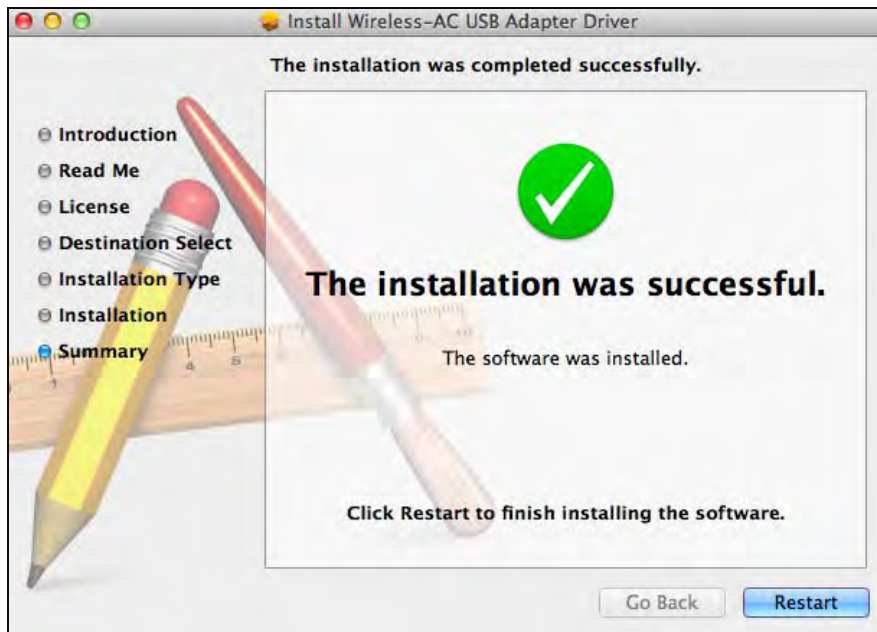
9. You will be prompted that you must restart your computer when the installation is complete. Click “Continue Installation” to proceed.




10. Please wait while the driver is installing.

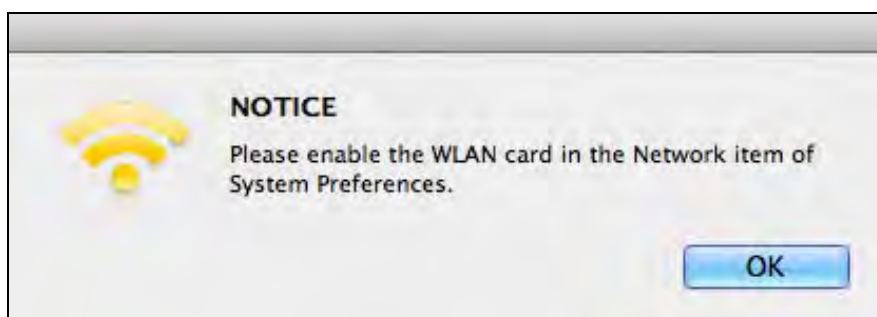


- 11.** When the installation is complete, you will see the following screen informing you that “The installation was successful.” Click “Restart” to restart your computer.

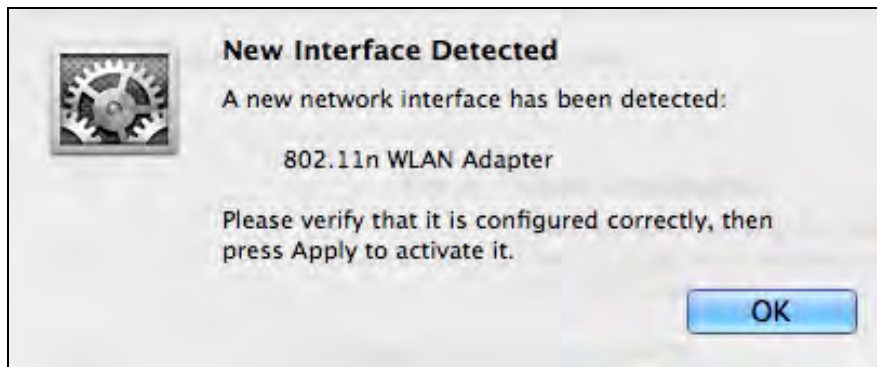


- 12.** When the adapter is connected to your computer (after your system has restarted) the wireless utility will open automatically. However if you see the notice below then you need to activate the adapter in “System Preferences → Network” as mentioned previously in **IV-1. Driver Installation** Step 4.

 ***If the utility doesn't open, you can open it from the “Applications” menu in your Mac.***



- 13.** Go to “System Preferences → Network” and a pop up window will display that a new interface has been detected. Click “OK” to close the window and then click “Apply” in the bottom right corner of the “Network” panel.



- 14.** Next, please disable any other wireless adapters as described in **VI. Disabling Network Adapters**. Then Mac users can connect to a Wi-Fi network using the included utility software. For guidance on doing so, please refer to **VII. Using The Adapter**.

## IV-2. Driver Uninstallation



***Ensure you select the correct folder for your version of Mac OS. To check your version of Mac OS, click the Apple logo in the top left corner of your desktop and go to “About This Mac”.***

1. Open the “Wlan\_11ac\_USB\_MacOS10...” folder for your version of Mac OS X (10.4 - 10.8).




2. Double click the “Uninstall.command” file and follow the on-screen instructions.



# V. Linux

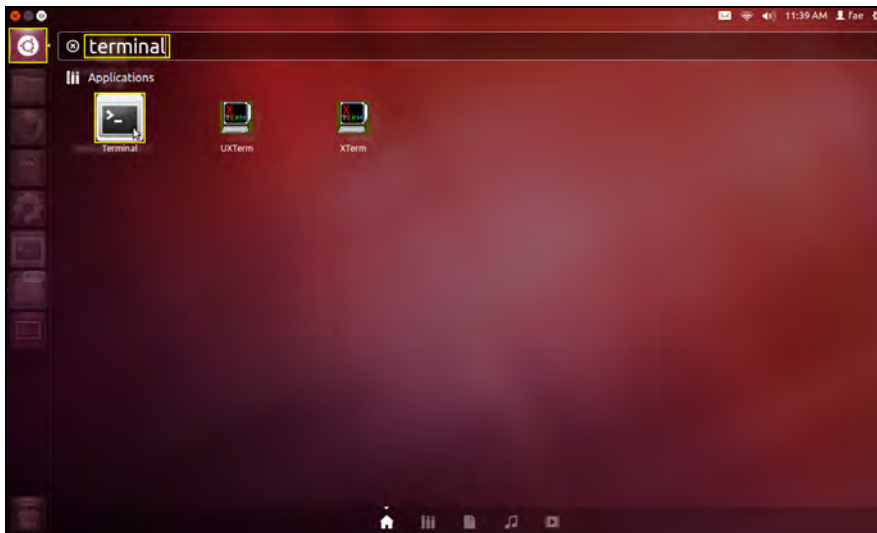
---

 **The following instructions are an example of Linux setup using Ubuntu 12.04. The process may vary according to your operating system.**

## V-1. Driver Installation

 **An active Internet connection is required for Linux driver installation.**

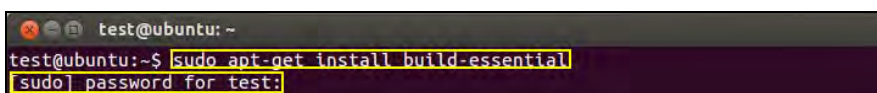
1. Ensure that your computer is connected to the Internet.
2. Click on “Dash Home” and then type “terminal”. Click the “terminal” icon.



3. Execute the command below to download the packet that is necessary to build the driver.

**sudo apt-get install build-essential**

Type the password for the administrator, and then type “y” to install the gcc packet.



4. Change to the “Home” directory and type the command below (where “test” is your login username):

**cd /home/test**

```
test@ubuntu: ~  
test@ubuntu:~$ cd /home/test/
```

5. Extract the driver using the command below:

**tar vxf 2011\_0427\_RT3572\_Linux\_STA\_v.2.5.0.0.DP.bz2**

```
test@ubuntu: ~  
test@ubuntu:~$ tar vxf rtl8812AU_8821AU_linux_v4.2.0_6952.20130315.tar.gz
```

6. Check the extracted file with the command “ls”:

```
test@ubuntu: ~  
test@ubuntu:~$ ls  
core          examples.desktop  rtl8812AU_8821AU_linux_v4.2.0_6952.20130315  
Desktop      Music             rtl8812AU_8821AU_linux_v4.2.0_6952.20130315.tar.gz  
Documents    Pictures          Templates  
Downloads    Public           Videos
```

7. Change to the driver folder and execute the command below:

**cd rtl8812AU\_8821AU\_linux\_v4.2.0\_6952.20130315**

```
test@ubuntu: ~  
test@ubuntu:~$ cd rtl8812AU_8821AU_linux_v4.2.0_6952.20130315
```

8. Build the driver. Execute the command below and then input the password.

**sudo make**

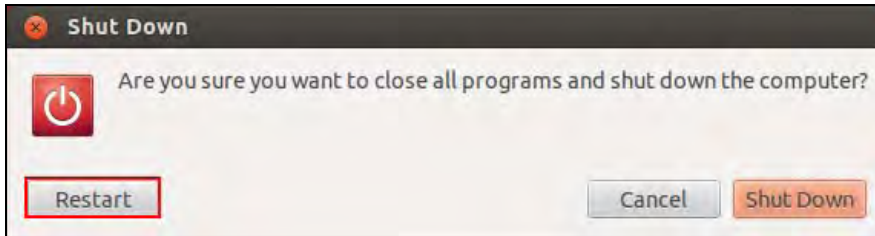
```
test@ubuntu: ~/rtl8812AU_8821AU_linux_v4.2.0_6952.20130315  
test@ubuntu:~/rtl8812AU_8821AU_linux_v4.2.0_6952.20130315$ sudo make  
[sudo] password for test:
```

9. Execute the command below to load the driver.

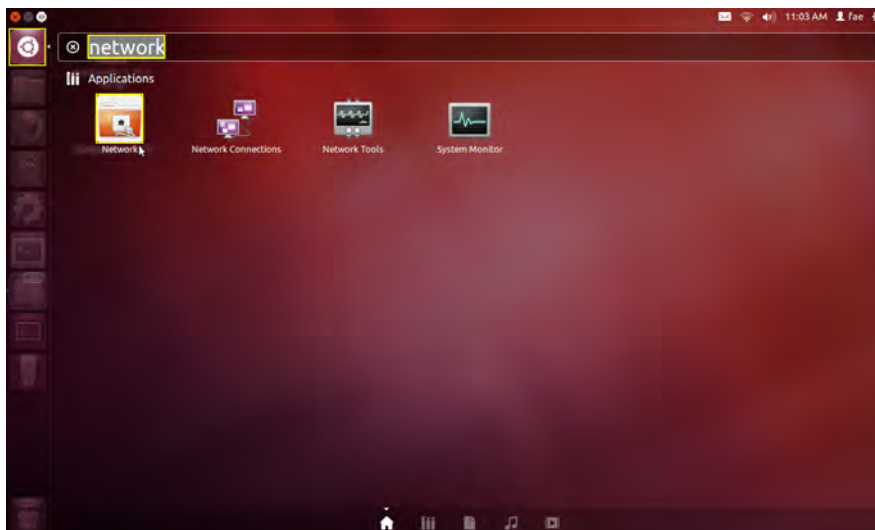
**sudo insmod os/linux/rt3572sta.ko**

```
test@ubuntu: ~/rtl8812AU_8821AU_linux_v4.2.0_6952.20130315
test@ubuntu:~/rtl8812AU_8821AU_linux_v4.2.0_6952.20130315$ sudo insmod 8821au.ko
```

**10.** Plug the EW-7811UAC/DAC into your computer and press “Restart”.



**11.** When Ubuntu has restarted, click on “Dash Home” and then type “network”. Click on the “network” icon as below.



**12.** Click on “Wireless” and then click the icon to open the drop-down menu labeled “Network Name”. Select the network you wish to connect to and enter the necessary security information.



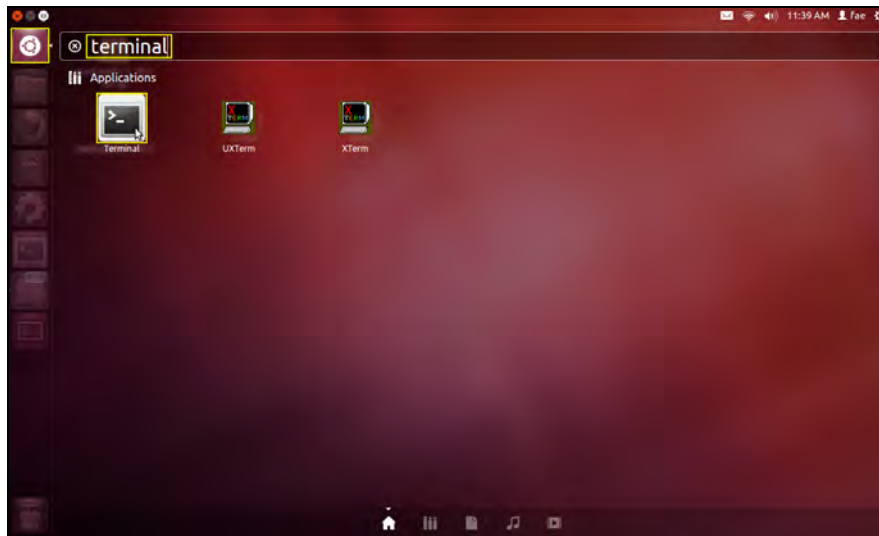
**13.** The “Network” screen will display “Connected” to indicate a connection has been established, as shown below.





## V-1. Driver Uninstallation

1. Click on “Dash Home” and then type “terminal”. Click the “terminal” icon.



2. Switch to the directory:

```
cd /home/test/rtl8812AU_8821AU_linux_v4.2.0_6952.20130315/
```

3. Execute the following command to uninstall the driver:

```
sudo make clean
```

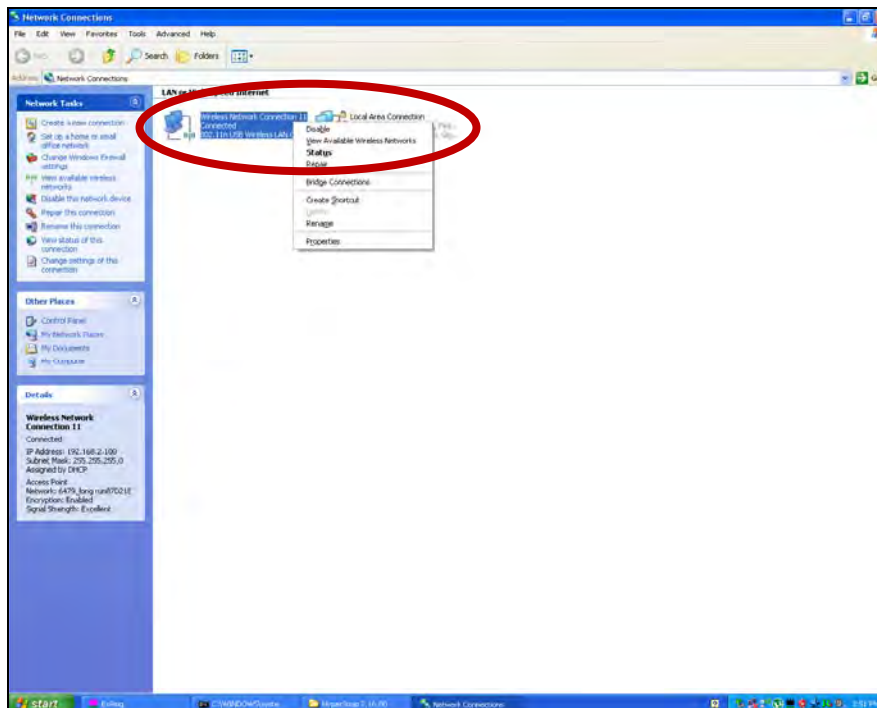
## VI. Disabling Network Adapters

---

To ensure that your USB wireless adapter can function correctly, it is recommended that you disable any other existing wireless network adapters installed on your computer. If you are unsure how to do so, you can refer to the user manual for your computer, or follow the guidance below.

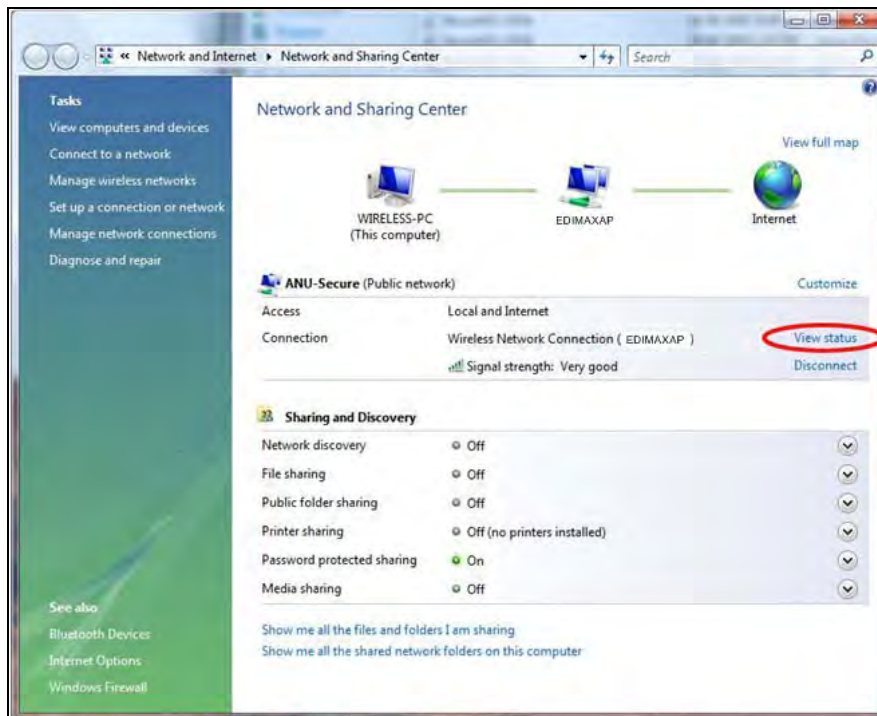
### V-1. Windows XP

Go to **Start > Control Panel > Network Connections**. Right click your wireless adapter and then select **“Disable”**.



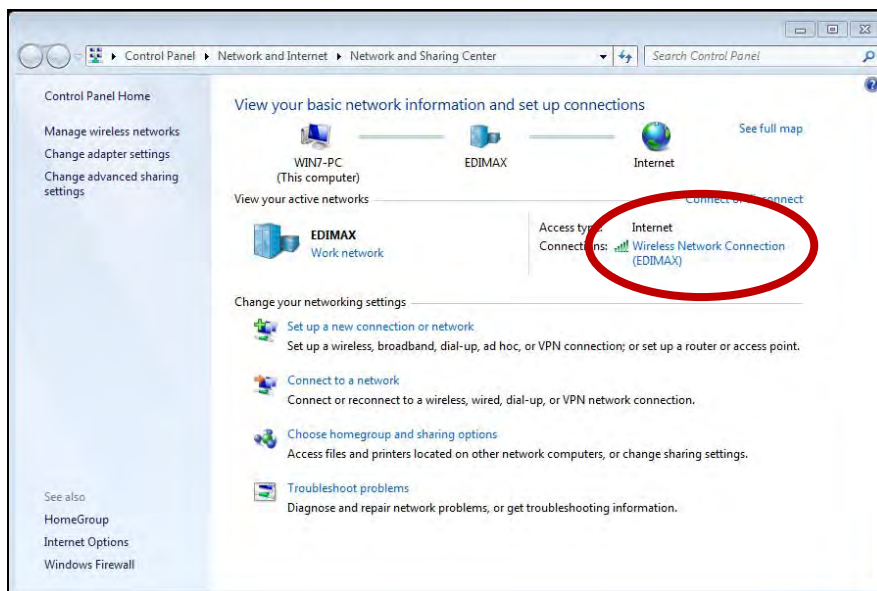
### VI-2. Windows Vista

Go to **Start > Control Panel**. Click **View network status and tasks > View Status** and click **Disable**.



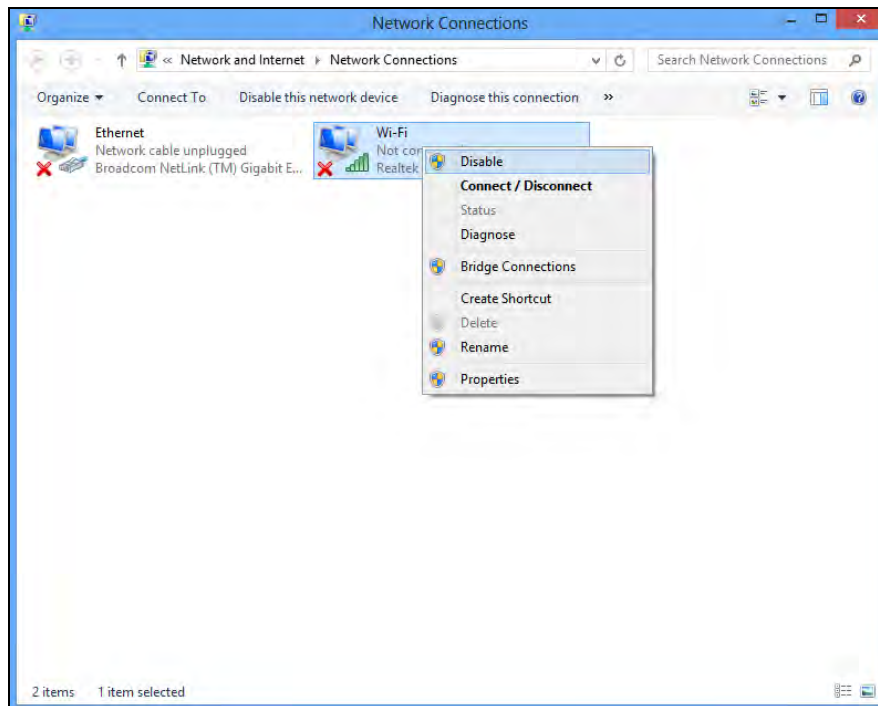
### VI-3. Windows 7

Go to **Start > Control Panel**. Click **View network status and tasks > Wireless Network Connection** and click **Disable**.



## VI-4. Windows 8

1. Switch to desktop mode by clicking your cursor in the bottom left of the Windows 8 Start screen. Then go to **File Explorer** > (right click) **Network** > **Properties** > **Change adapter settings**.
2. Right click your wireless adapter, select **“Properties”** and then **“Disable”**.

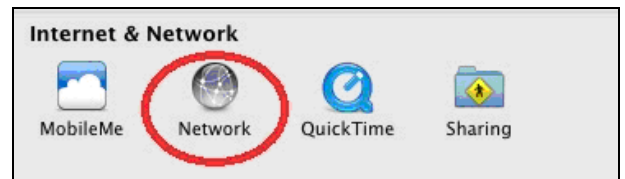


## VI-5. Mac

1. Select “System Preferences” from the dock.



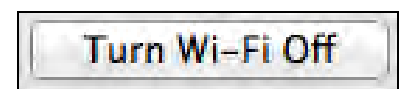
2. In “System Preferences”, select “Network”.




3. All of your network connections will be displayed, as shown below. Select “Wi-Fi” from the left panel.



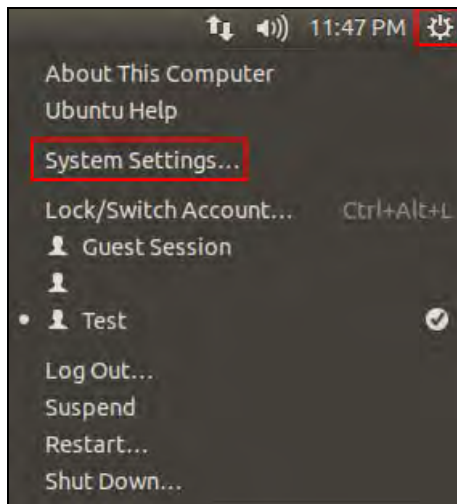
4. Click “Turn Wi-Fi” off in the main panel.



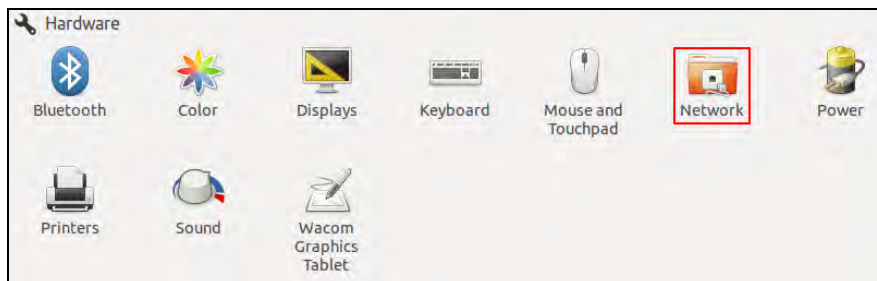
## VI-6. Linux

 **The following instructions are an example of Linux using Ubuntu 12.04. The process may vary according to your operating system.**

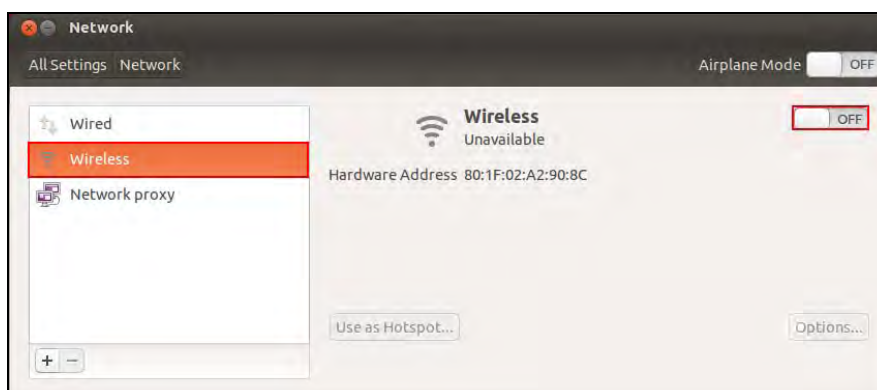
1. Click the icon in the top right corner (shown below) and select “System Settings” from the menu.



2. On the next screen, double click “Network” listed under “Hardware”.



3. Select a wireless adapter from the left panel, and then click the “ON/OFF” button on the right side to disable it.



## VII. Using The Adapter

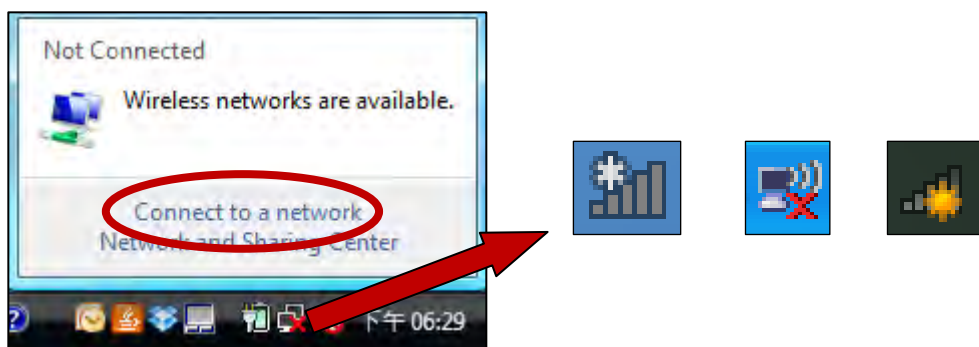
---

After you have installed the driver and if necessary disabled other wireless adapters (see VI. **Disabling Network Adapters**), Windows users can connect to a Wi-Fi network as usual (see below). Mac users need to connect to a Wi-Fi network using the included utility software, as described in VII-2. **Mac**.

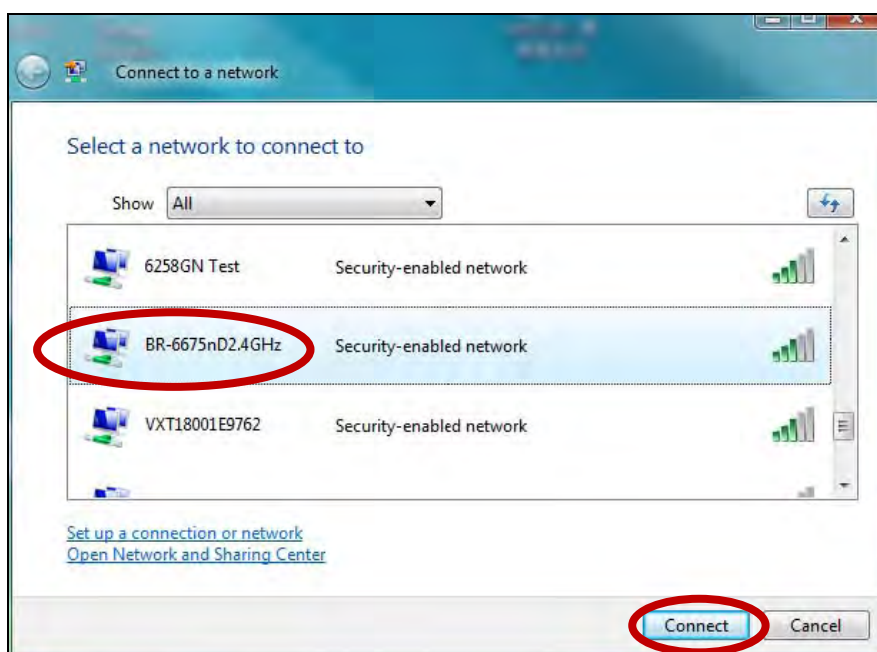
### VII-1. Windows

Below is an example of how to connect using Windows Vista - the process may vary slightly for other versions of Windows.

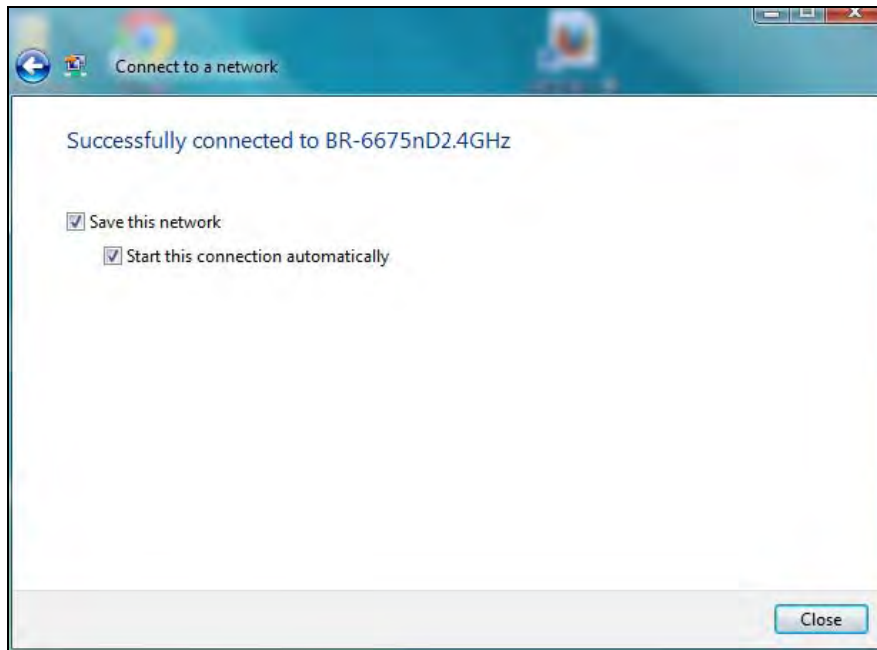
1. Click the network icon (examples below) in the system tray and select "Connect to a network".



2. Search for the SSID of your Wi-Fi network and then click "Connect". If you set a password for your network, you will then be prompted to enter it.



3. After correctly entering your password, you will be successfully connected to your Wi-Fi network.



## VII-2. Mac: Connect to a Wi-Fi network

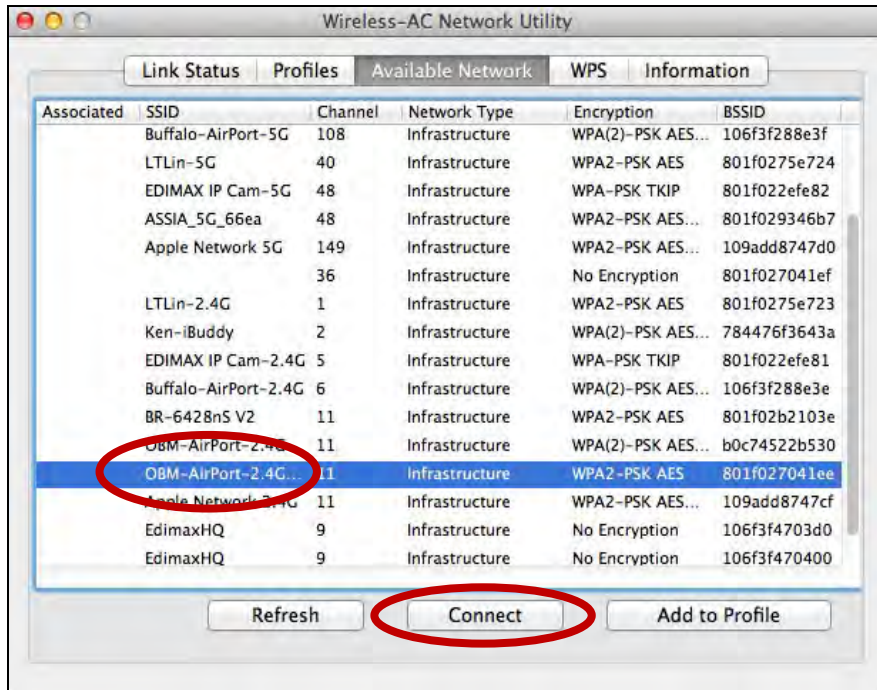
1. The wireless utility will open automatically when the adapter is connected to your computer.



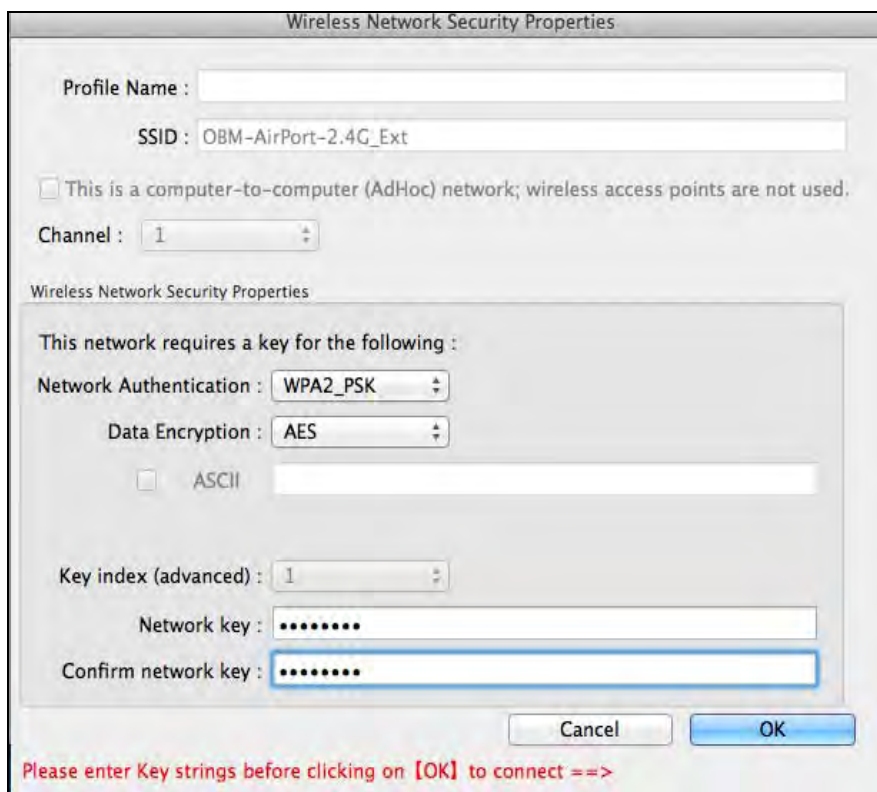
***If the utility doesn't open, you can open it from the "Applications" menu in your Mac.***

2. Click the "Available Network" tab in the wireless utility. Select a Wi-Fi network to connect to and click "Connect".

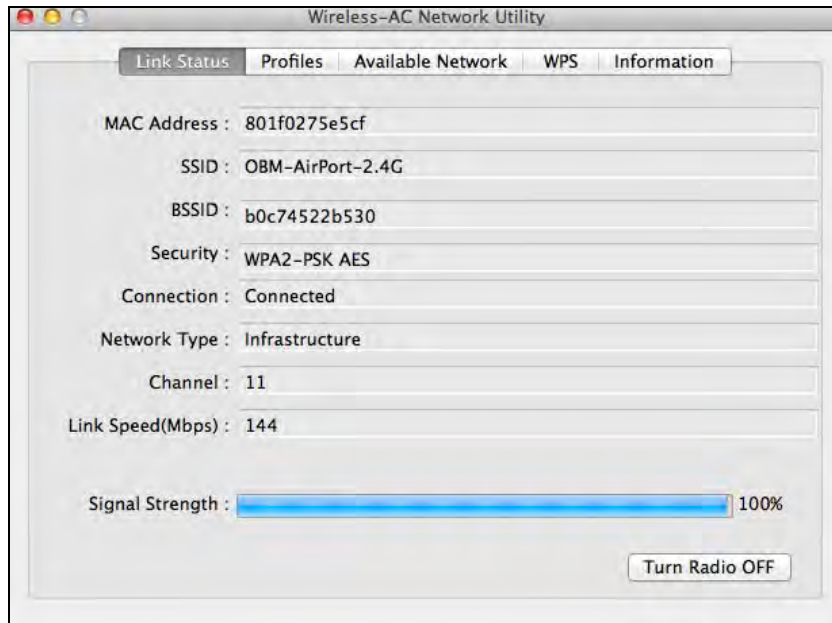




- Enter the password (network key) for the Wi-Fi network, confirm the password (network key) again below and click “OK”.



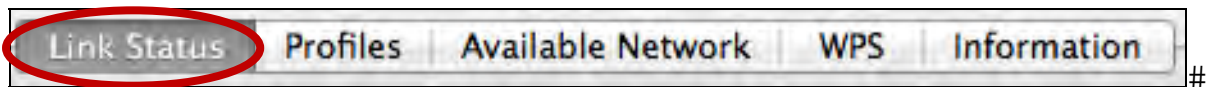
- After entering your password, you will be successfully connected to your Wi-Fi network. A summary of the connection will be displayed on the “Link Status” page, as shown below.



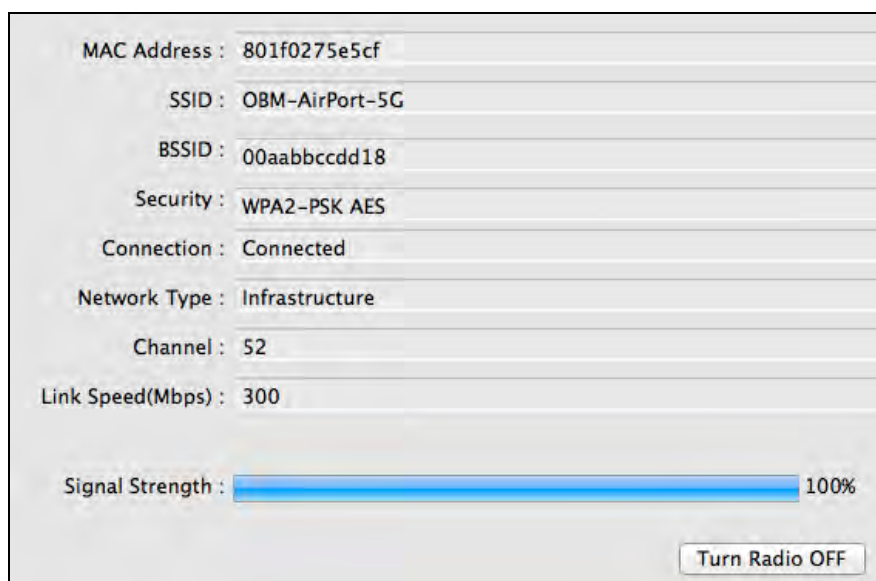
### VII-3. Mac: Wireless Utility

The wireless utility offers features to monitor and configure your connection. Navigate the wireless utility using the menu across the top of the window.

#### VII-3-1. Link Status

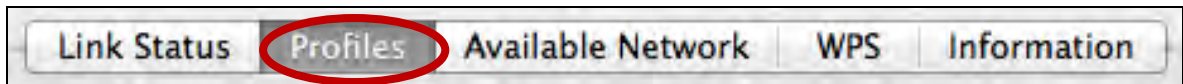


The “Link Status” page displays information about the current wireless connection.

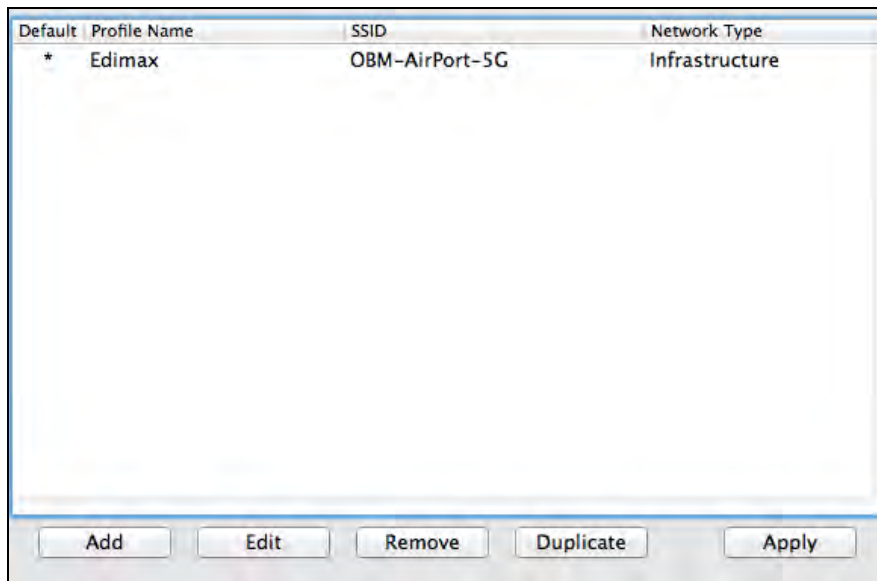


<b>Turn Radio OFF</b>	Switch off the adapter's wireless radio.
-----------------------	--

## VII-3-2. Profiles



The “Profiles” screen allows you to save different Wi-Fi connection settings as “Profiles”. Existing profiles are listed in the “Profile List”.



<b>Add</b>	Opens a new window to manually add a new profile.
<b>Edit</b>	Edit an existing profile.
<b>Remove</b>	Remove an existing (selected) profile.
<b>Duplicate</b>	Activate (connect to) an existing profile.
<b>Apply</b>	Save any changes.

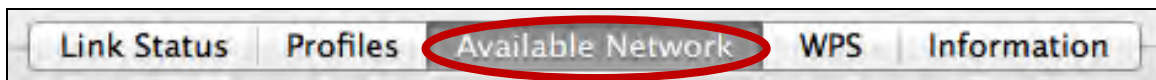
### Add

When you select “Add”, a new window will open. Enter a profile name and SSID, along with security information, and then click “OK”.



***You can also add a new profile from the “Available Network” screen.***

### VII-3-3. Available Network



The “Available Network” screen displays a list of all available Wi-Fi networks within range along with various categories of information about each network.

Associated	SSID	Channel	Network Type	Encryption	BSSID
	EdimaxHQ_5G	44	Infrastructure	No Encryption	106f3f470408
	EdimaxHQ_5G	44	Infrastructure	No Encryption	106f3f4703d8
	CELENOF8F1A5	60	Infrastructure	WPA2-PSK AES	001f1ff8f1a5
	Buffalo-AirPort-5G	108	Infrastructure	WPA(2)-PSK AES...	106f3f288e3f
	EdimaxHQ_5G	40	Infrastructure	No Encryption	001020304058
	LTLin-5G	40	Infrastructure	WPA2-PSK AES	801f0275e724
	ASSIA_5G_66ea	48	Infrastructure	WPA2-PSK AES...	801f029346b7
	Apple Network 5G	149	Infrastructure	WPA2-PSK AES...	109add8747d0
	EDIMAX IP Cam-5G	48	Infrastructure	WPA-PSK TKIP	801f022efe82
	logitec2nd52	11	Infrastructure	WEP	02018e40d5b8
	logitec11a52	36	Infrastructure	WPA(2)-PSK AES...	00018e40d5ba
	Belkin.b37.media	149	Infrastructure	WPA2-PSK AES	ec1a59832b37
	logitec52	11	Infrastructure	WPA(2)-PSK AES...	00018e40d5b8
	MEETING_ROOM_6F	1	Infrastructure	No Encryption	001f1f1f73fc
	EdimaxHQ	9	Infrastructure	No Encryption	001020304050

<b>Refresh</b>	Refresh the list of available wireless networks.
<b>Connect</b>	Connect to a selected wireless network.
<b>Add to Profile</b>	Use a selected wireless network to create a new profile (see <b>VII-3-2. Profiles</b> ).

## VII-3-4. WPS



The WPS page displays information relating to Wireless Protected Setup (WPS). All available access points along with their respective BSSID, security information and channel numbers are listed.

SSID	Channel	Security	BSSID
LTLin-2.4G	1	WPA2-PSK AES	801f0275e723
Ken-iBuddy	2	WPA(2)-PSK AES...	784476f3643a
6228NC	7	WPA2-PSK AES	001f1fc02431
Buffalo-AirPort-2.4G	6	WPA(2)-PSK AES...	106f3f288e3e
BR-6428nS V2	11	WPA2-PSK AES	801f02b2103e
OBM-AirPort-2.4G	11	WPA(2)-PSK AES...	b0c74522b530
ext-AirPort-2.4G	11	WPA2-PSK AES	801f027041ee
OBM-AirPort-5G	40	WPA(2)-PSK AES...	b0c74522b538
default	36	No Encryption	801f022f00ce
CELENOF8F1A5	60	WPA2-PSK AES	001f1ff8f1a5
Buffalo-AirPort-5G	108	WPA(2)-PSK AES	106f3f288e3f

SCAN Please key the PIN code into your AP's config page

PIN: **72460665**

PBC

Cancel

The adapter's WPS PIN code is displayed next to "PIN". The PIN code is a security feature and you will need to enter it into your access point/router's WPS configuration screen to complete PIN code WPS.

<b>Scan</b>	Refresh the list of available wireless networks.
<b>PIN</b>	Activate PIN code WPS on the wireless extender for two minutes.
<b>PBC</b>	Activate Push Button Configuration (PBC) WPS on the wireless extender for two minutes.



**Activate WPS on your access point/router (and enter the PIN code if required) within two minutes of activating WPS on the wireless extender.**

## VII-3-5. Information



The “Information” screen displays various information such as wireless utility version and driver version.



## VII-4. WPS Setup

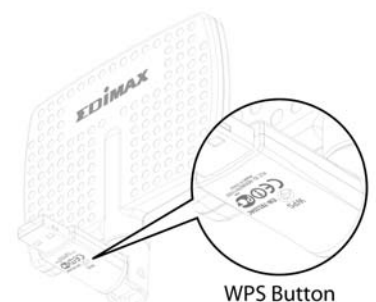
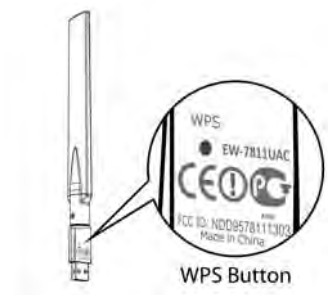
If your wireless router/access point supports Wi-Fi Protected Setup (WPS) then you can use this method to connect to a Wi-Fi network.

1. Press the WPS button (often the WPS/Reset button) on your router/access point to activate WPS.



***Please check the instructions for your wireless router/access point for how long you need to hold down its WPS button to activate WPS.***

2. Within two minutes, press the WPS button on the underside of the EW-7811UAC/DAC to activate its WPS.
3. The devices will establish a connection.



## COPYRIGHT

Copyright © Edimax Technology Co., Ltd. all rights reserved. No part of this publication may be reproduced, transmitted, transcribed, stored in a retrieval system, or translated into any language or computer language, in any form or by any means, electronic, mechanical, magnetic, optical, chemical, manual or otherwise, without the prior written permission from Edimax Technology Co., Ltd.

Edimax Technology Co., Ltd. makes no representations or warranties, either expressed or implied, with respect to the contents hereof and specifically disclaims any warranties, merchantability, or fitness for any particular purpose. Any software described in this manual is sold or licensed as is. Should the programs prove defective following their purchase, the buyer (and not this company, its distributor, or its dealer) assumes the entire cost of all necessary servicing, repair, and any incidental or consequential damages resulting from any defect in the software. Edimax Technology Co., Ltd. reserves the right to revise this publication and to make changes from time to time in the contents hereof without the obligation to notify any person of such revision or changes.

The product you have purchased and the setup screen may appear slightly different from those shown in this QIG. The software and specifications are subject to change without notice. Please visit our website [www.edimax.com](http://www.edimax.com) for updates. All brand and product names mentioned in this manual are trademarks and/or registered trademarks of their respective holders.

## Federal Communication Commission Interference Statement

This equipment has been tested and found to comply with the limits for a Class B digital device, pursuant to Part 15 of FCC Rules. These limits are designed to provide reasonable protection against harmful interference in a residential installation. This equipment generates, uses, and can radiate radio frequency energy and, if not installed and used in accordance with the instructions, may cause harmful interference to radio communications. However, there is no guarantee that interference will not occur in a particular installation. If this equipment does cause harmful interference to radio or television reception, which can be determined by turning the equipment off and on, the user is encouraged to try to correct the interference by one or more of the following measures:

1. Reorient or relocate the receiving antenna.
2. Increase the separation between the equipment and receiver.
3. Connect the equipment into an outlet on a circuit different from that to which the receiver is connected.
4. Consult the dealer or an experienced radio technician for help.

### FCC Caution

This device and its antenna must not be co-located or operating in conjunction with any other antenna or transmitter. This device complies with Part 15 of the FCC Rules. Operation is subject to the following two conditions: (1) this device may not cause harmful interference, and (2) this device must accept any interference received, including interference that may cause undesired operation. Any changes or modifications not expressly approved by the party responsible for compliance could void the authority to operate equipment.

### Federal Communications Commission (FCC) RF Exposure Requirements

This EUT is compliance with SAR for general population/uncontrolled exposure limits in ANSI/IEEE C95.1-1999 and had been tested in accordance with the measurement methods and procedures specified in OET Bulletin 65 Supplement C. This equipment should be installed and operated with minimum distance 0.5cm between the radiator & your body.

The equipment version marketed in US is restricted to usage of the channels 1-11 only. This equipment is restricted to **indoor** use when operated in the 5.15 to 5.25 GHz frequency range.

### R&TTE Compliance Statement

This equipment complies with all the requirements of DIRECTIVE 1999/5/EC OF THE EUROPEAN PARLIAMENT AND THE COUNCIL of March 9, 1999 on radio equipment and telecommunication terminal equipment and the mutual recognition of their conformity (R&TTE). The R&TTE Directive repeals and replaces in the directive 98/13/EEC (Telecommunications Terminal Equipment and Satellite Earth Station Equipment) As of April 8, 2000.

### Safety

This equipment is designed with the utmost care for the safety of those who install and use it. However, special attention must be paid to the dangers of electric shock and static electricity when working with electrical equipment. All guidelines of this and of the computer manufacture must therefore be allowed at all times to ensure the safe use of the equipment.

### EU Countries Intended for Use

The ETSI version of this device is intended for home and office use in Austria, Belgium, Bulgaria, Cyprus, Czech, Denmark, Estonia, Finland, France, Germany, Greece, Hungary, Ireland, Italy, Latvia, Lithuania, Luxembourg, Malta, Netherlands, Poland, Portugal, Romania, Slovakia, Slovenia, Spain, Sweden, Turkey, and United Kingdom. The ETSI version of this device is also authorized for use in EFTA member states: Iceland, Liechtenstein, Norway, and Switzerland.

### EU Countries Not Intended for Use

None



## EU Declaration of Conformity

- English:** This equipment is in compliance with the essential requirements and other relevant provisions of Directive 1999/5/EC, 2009/125/EC.
- Français:** Cet équipement est conforme aux exigences essentielles et autres dispositions de la directive 1999/5/CE, 2009/125/CE
- Čeština:** Toto zařízení je v souladu se základními požadavky a ostatními příslušnými ustanoveními směrnic 1999/5/ES, 2009/125/ES.
- Polski:** Urządzenie jest zgodne z ogólnymi wymaganiami oraz szczególnymi warunkami określonymi Dyrektywą UE 1999/5/EC, 2009/125/EC
- Română:** Acest echipament este în conformitate cu cerințele esențiale și alte prevederi relevante ale Directivei 1999/5/CE, 2009/125/CE.
- Русский:** Это оборудование соответствует основным требованиям и положениям Директивы 1999/5/EC, 2009/125/EC.
- Magyar:** Ez a berendezés megfelel az alapvető követelményeknek és más vonatkozó irányelveknek (1999/5/EK, 2009/125/EC)
- Türkçe:** Bu cihaz 1999/5/EC, 2009/125/EC direktifleri zorunlu istekler ve diğer hükümlerle ile uyumludur.
- Українська:** Обладнання відповідає вимогам і умовам директиви 1999/5/EC, 2009/125/EC.
- Slovenčina:** Toto zariadenie spĺňa základné požiadavky a ďalšie príslušné ustanovenia smerníc 1999/5/ES, 2009/125/ES.
- Deutsch:** Dieses Gerät erfüllt die Voraussetzungen gemäß den Richtlinien 1999/5/EC, 2009/125/EC.
- Español:** El presente equipo cumple los requisitos esenciales de la Directiva 1999/5/EC, 2009/125/EC.
- Italiano:** Questo apparecchio è conforme ai requisiti essenziali e alle altre disposizioni applicabili della Direttiva 1999/5/CE, 2009/125/CE.
- Nederlands:** Dit apparaat voldoet aan de essentiële eisen en andere van toepassing zijnde bepalingen van richtlijn 1999/5/EC, 2009/125/EC.
- Português:** Este equipamento cumpre os requisitos essenciais da Directiva 1999/5/EC, 2009/125/EC
- Norsk:** Dette utstyret er i samsvar med de viktigste kravene og andre relevante regler i Direktiv 1999/5/EC, 2009/125/EC.
- Svenska:** Denna utrustning är i överensstämmelse med de väsentliga kraven och övriga relevanta bestämmelser i direktiv 1999/5/EG, 2009/125/EG.
- Dansk:** Dette udstyr er i overensstemmelse med de væsentligste krav og andre relevante forordninger i direktiv 1999/5/EC, 2009/125/EC.
- Suomi:** Tämä laite täyttää direktiivien 1999/5/EY, 2009/125/EY oleelliset vaatimukset ja muut asiaankuuluvat määräykset.

FOR USE IN 



---

## WEEE Directive & Product Disposal



At the end of its serviceable life, this product should not be treated as household or general waste. It should be handed over to the applicable collection point for the recycling of electrical and electronic equipment, or returned to the supplier for disposal.



**Σ EDIMAX**  
NETWORKING PEOPLE TOGETHER