

DYNE X™

Wireless 11G Desktop Card

Product Name [French]

Product Name [Spanish]

DX-WGDTTC

USER GUIDE • GUIDE DE L'UTILISATEUR • GUÍA DEL USUARIO

Dynex DX-WGNBC or DX-WGDTC Wireless LAN Card

Contents

Introduction	2
Installing the software and hardware	2
Configuring the wireless network	4
Troubleshooting	6
Legal notices	7
Français	8
Español	9

Introduction

Thank you for purchasing a Dynex Wireless LAN 802.11g notebook or desktop card. This package contains the following:

- A Wireless LAN 802.11g notebook or desktop card
- A printed user guide
- A CD containing the wireless network card utility and drivers and this user guide

If anything is missing, contact Dynex at (800) 305-2204.

Installing the software and hardware

Use the following procedures to set up your wireless network.

To install wireless networking on a Windows XP computer:

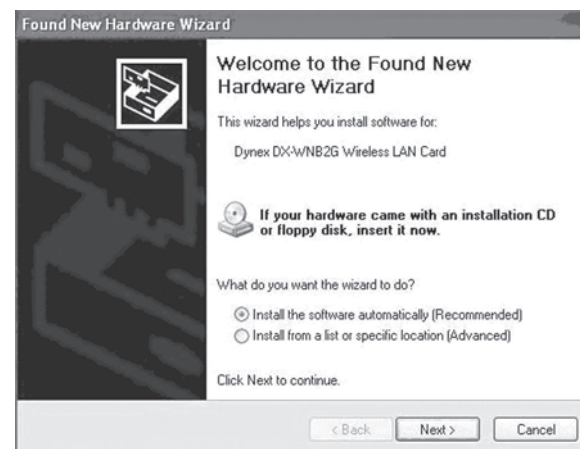
Caution: Do not insert the notebook or desktop card until instructed to do so.

- 1 Install the access point. For more information, see the access point documentation.
- 2 Turn on your computer.
- 3 Insert the included CD in the optical drive.
- 4 If the installation program does not start automatically, use Windows Explorer or My Computer to browse the CD and locate the file named **setup.exe**, then double-click **setup.exe** to start installing the software.
- 5 Follow the on-screen instructions to install the software.

- 6 If you are installing a desktop card, turn off your computer, install the card, then turn on your computer again. The *Found New Hardware Wizard* opens.

-OR-

Insert your notebook card into the appropriate slot in your notebook. The *Found New Hardware Wizard* opens.



- 7 Click **Install the software automatically (Recommended)**, then click **Next**.

- 8 If a warning box opens, click **Continue Anyway**. Your computer copies files to your hard drive.

- 9 Click **Finish**.

To install wireless networking on a Windows 98, Windows 2000, or Windows ME computer:

Caution: Do not insert the notebook or desktop card until instructed to do so.

- 1 Install the access point. For more information, see the access point documentation.
- 2 Turn on your computer.
- 3 Insert the included CD in the optical drive.
- 4 If the installation program does not start automatically, use Windows Explorer to browse the CD and locate the file named **setup.exe**, then double-click **setup.exe** to start installing the software.
- 5 Follow the on-screen instructions to install the software.
- 6 If you are installing a desktop card, turn off your computer, install the card, then turn on your computer again. The *Found New Hardware Wizard* opens.

-OR-

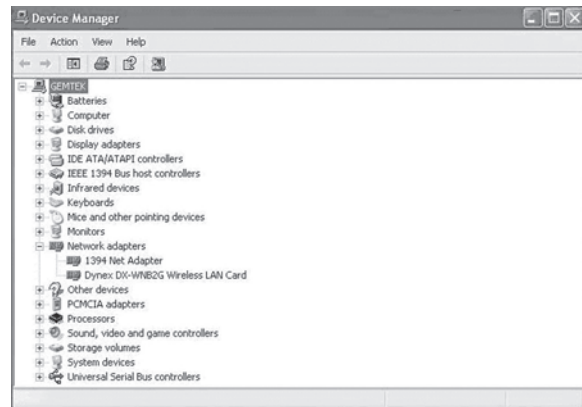
Insert your notebook card into the appropriate slot in your notebook. The *Found New Hardware Wizard* opens.



Installing the software and hardware

3

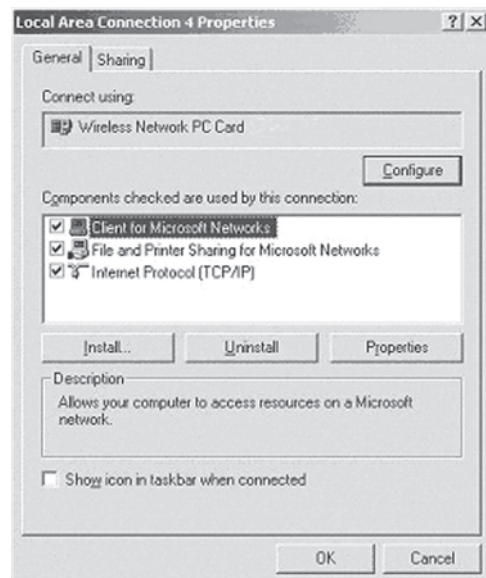
- 7 Right-click on the **My Computer** desktop icon, click **Properties**, then click **Hardware Device Manager**. Make sure that the card is listed as one of the devices in your computer.



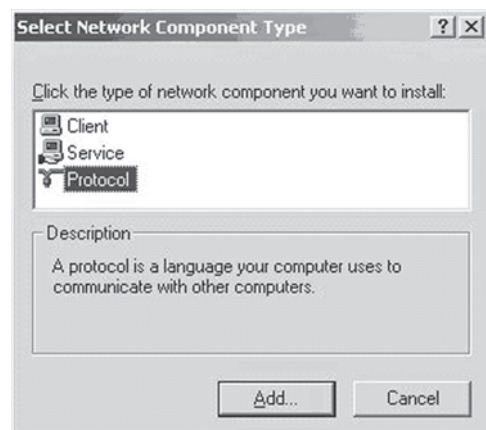
- 8 If you are using Windows 98, right-click on the **Network Neighborhood** desktop icon, then click **Properties**. The *Local Area Connection Properties* dialog box opens.

-OR-

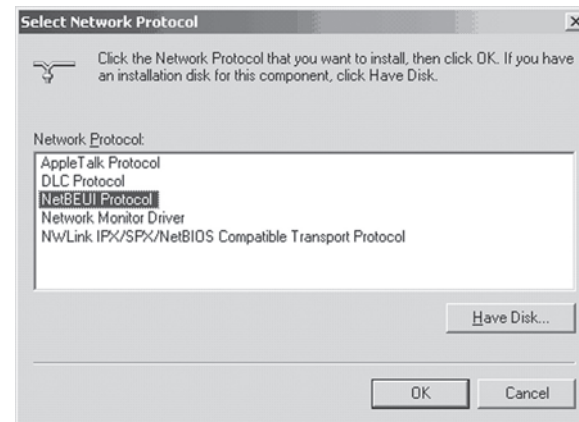
If you are using Windows ME and Windows 2000, right-click on the **Network Neighborhood** desktop icon, click **Properties**, then click **Local Area Connection's properties**. The *Local Area Connection Properties* dialog box opens.



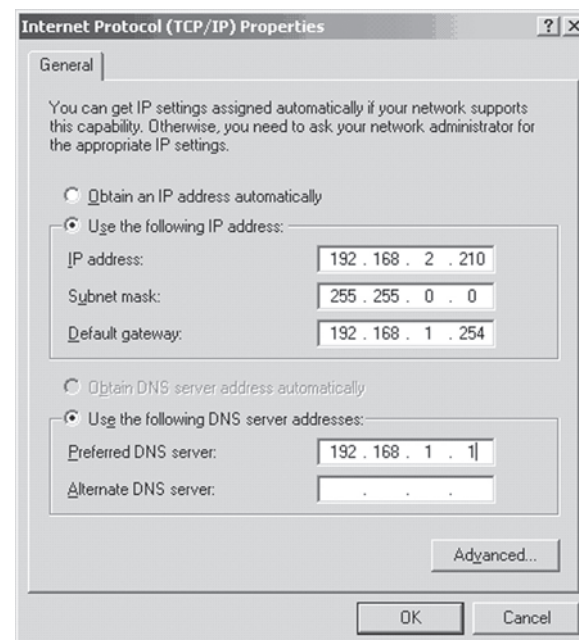
- 9 Click on the **General** tab, then click **Install**. The *Select Network Component Type* dialog box opens.



- 10 Click **Protocol**, then click **Add**. The *Select Network Protocols* dialog box opens.



- 11 From the network protocols list, select **NetBEUI**, then click **OK**. The NetBEUI protocol is installed.
- 12 Click **OK** to return to the *Select Network Component Type* dialog box.
- 13 Repeat steps 10 through 12 to add the IPX/SPX protocol.
- 14 Click **TCP/IP** to set the IP address for your computer. Select either **Obtain an IP address automatically** or **Use the following IP address** setting. If you choose to specify an IP address, then enter the IP value, subnet mask, DNS, Domain/ Workgroup name, and Gateway Address values.



- 15 Click **OK** to return to *Local Area Connection Properties* dialog box.
- 16 Select the File and Printer Sharing options and sharing for your computer's resources, then click **OK**.
- 17 Click **Yes** when a pop up appears asking if you want to restart your computer. Your computer turns off and turns on again.

Uninstalling the software and hardware

To uninstall the software and hardware:


- 1 Click **Start, All Programs or Programs, Dynex Wireless LAN Card Utility**, then click **Uninstall**.
- 2 Remove the card.
- 3 Restart your computer.

Configuring the wireless network

Your Wireless LAN 802.11g card uses its own management software. All functions are controlled by this utility. To make it easier to move from one network environment to another, the utility uses profiles that you create.

To use the wireless utility:

- 1 Click **Start, All Programs** or **Programs, Dynex Wireless LAN Card Utility**, then **Dynex Wireless LAN Card Utility**.

Note: The wireless utility icon  should appear in your icon tray. If the icon is red, it means that the Wireless LAN 802.11g NIC configuration is invalid or incomplete.



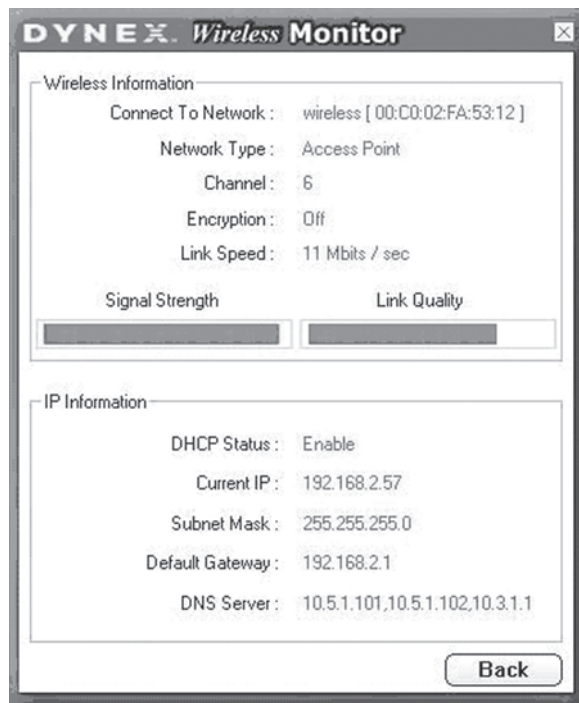
- 2 Select the profile you want to use for your network connection.

-OR-

Click on the following:

- The tabs to navigate through the different settings.
- The **X** button to minimize the window.
- The **More...** button to get more information.

Link Information tab



Fields on the *Link Information* tab include:

Connected To Network—This field displays the current status of the connection. Possible status messages include:

- **Connected to Network**—Indicates normal flow of operation in Infrastructure mode. The computer is connected to an access point and networking is available.
- **Scanning**—Indicates the computer is searching for an available access point within range.

Note: This field also displays error messages if the driver fails to initialize.

Network Type—Possible network types include:

- **Infrastructure Mode**—The driver scans all available channels continuously until it finds one or more access points that match its SSID (network name). At that point it tries to authenticate and associate with the access point.
- **Peer to Peer Mode**—The driver scans for five seconds looking for an existing Ad Hoc network using the same SSID.

Channel—Displays the channel the network is on.

Encryption—Displays **Off** when encryption is turned off, **WEP** when either 64-bit or 128-bit is turned on, or **WPA** when WPA is turned on.

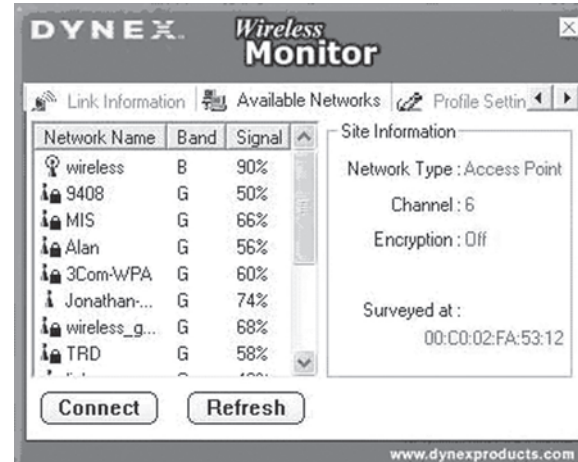
Link Speed—Displays the current connection data rate.

Signal Strength—The Signal Strength bar graph is only active when the network is in infrastructure mode. The bar graph displays normalized signal strength as reported by the radio, averaged over all frames over 100 bytes long that are received from the access point.

Link Quality—The Link Quality bar graph is only active when the network is in infrastructure mode. The bar graph displays the quality of the link between the computer and access point.

Available Networks tab

The *Available Networks* tab shows the current status of available access points within the network and lets you select which access point you want to connect to.



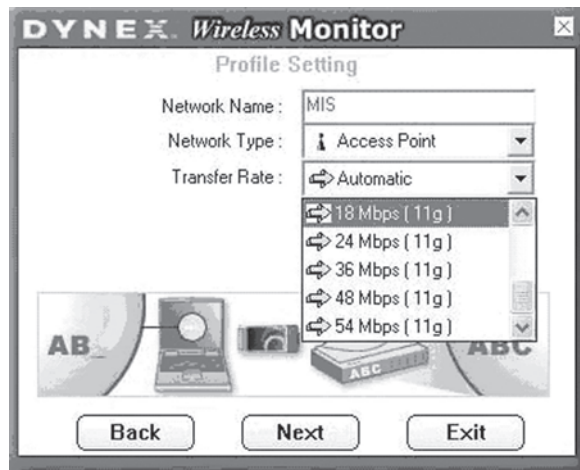
To connect to an access point:

- 1 Select an access point from list.
- 2 Click **Connect** to connect to the access point.

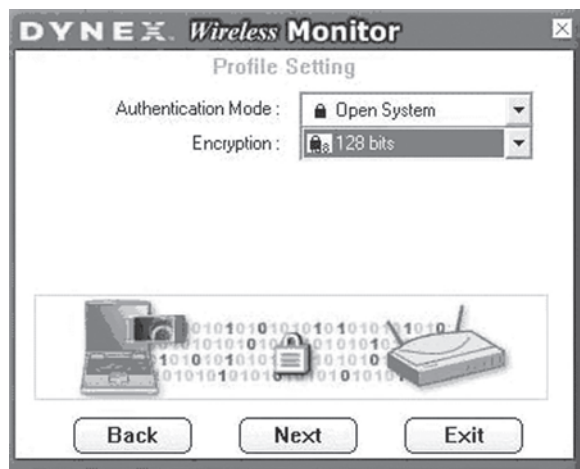
If the access point you want to connect to is not listed, click **Refresh** to rescan the network and list all available access points within network.

Connecting to a network**To connect to a network:**

- 1 Click **Connect** on the *Available Networks* tab. The following screen opens.

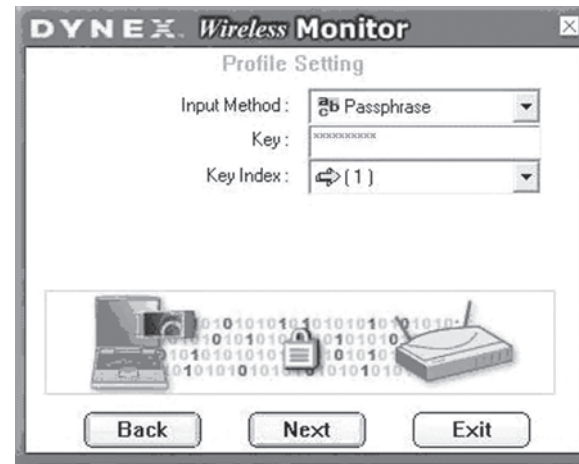


- 2 Set the values of the following fields:
 - **Network Name**—Type a name for the new profile.
 - **Network Type**—Select from the list of supported network types. Supported types include:
 - **Peer to Peer**—This is the 802.11g peer-to-peer mode (also known as Ad Hoc). Only one wireless *cell* is supported for each different SSID. All communication is done from client to client without the use of an access point. 802.11g Ad Hoc networking uses the same SSID for establishing the wireless connection.
 - **Access Point**—This mode requires an 802.11g or 802.11b access point. All communication is done through the access point, which relays packets of information to other wireless computers as well as to computers on a wired network (such as Ethernet).
 - **Transfer Rate**—The transmission rate at which the access point transmits the data packets. You may set this to:
 - fixed 1 Mbps, fixed 2 Mbps, fixed 5.5 Mbps, fixed 11 Mbps, or Automatic if you are using an 802.11b access point.
 - fixed 6 Mbps, fixed 9 Mbps, fixed 12 Mbps, fixed 18 Mbps, fixed 24 Mbps, fixed 36 Mbps, fixed 48 Mbps, fixed 54 Mbps, or Automatic if you are using an 802.11g access point.
- 3 Click **Next**. The following screen opens.



- 4 Set the values of the following fields:
 - **Authentication Mode**—Use the default authentication mode.
 - **Encryption**—Use the default encryption.

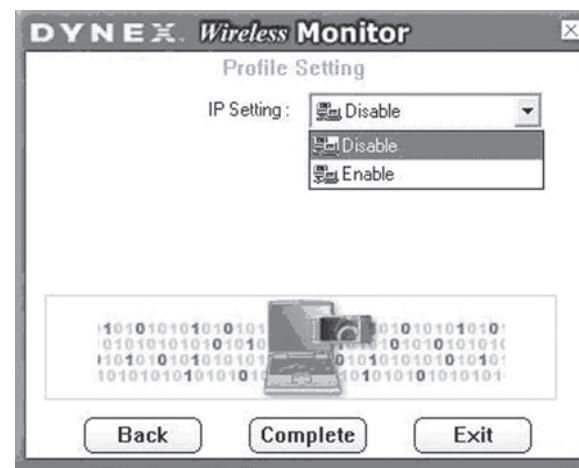
- 5 Click **Next**. The following screen opens.



When encrypted information is received it is only accepted if it decrypts correctly. This happens only if the computer has the WEP Key used by the access point. This screen lets you enter the WEP key.

- 6 Set the values of the following fields:
 - **Input Method**—Select the input method that matches the input method used by the access point.
 - **Key**—Enter the WEP Key. This key must be the same as the key used by the access point. It must be between 8 and 63 characters long.

Note: Use only the digits 0-9 and letters A-F for the key.
 - **Key Index**—Select the key index that matches the key index used by the access point.
- 7 Click **Next**. The following screen opens.

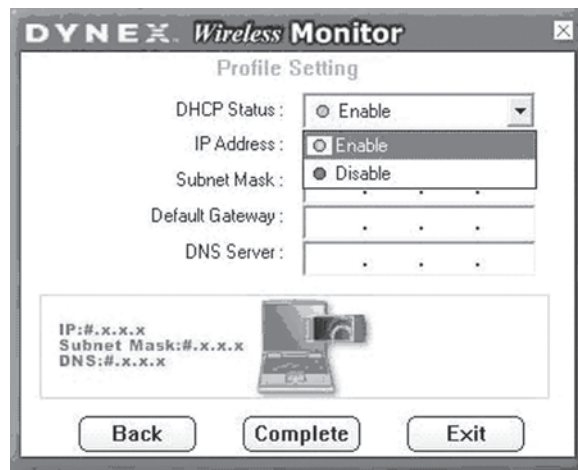


- 8 If you want to set the IP setting, click **Enable**, then go to step 9.

-OR-

 If you want the IP setting to be set up automatically, click **Disable**, then click **Complete**. You are finished.

- 9 Click **Next**. The following screen opens.

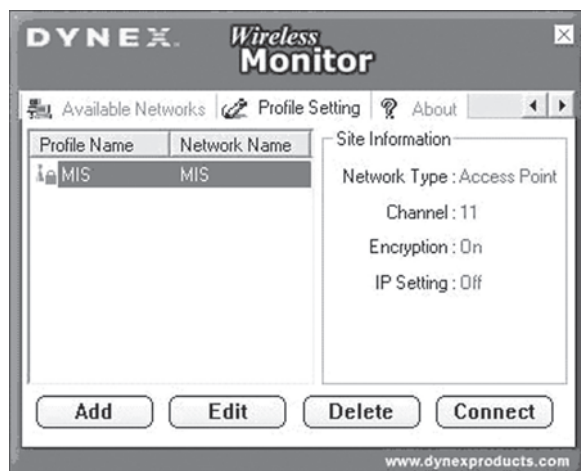


The purpose of this screen is to configure the TCP/IP setting of each wireless connection. You must define if the current profile's IP setting is assigned by a DHCP server or assigned by a fixed IP that is determined by the Network Administrator.

- 10 Set the values of the following fields:
- **DHCP Status**—Select **Enable** if the TCP/IP information is assigned by a DHCP Server. Select **Disable** if you would like to specify the IP address manually.
 - **IP Address**—Enter the IP address for the network card.
 - **Subnet Mask**—Enter the subnet mask for the network card. The default is 255.255.255.0
 - **Default Gateway**—Enter your network's default gateway's IP address.
 - **DNS Server**—Enter the domain name system server's address.
- 11 Click **Complete**. You are finished.

Profile Setting tab

The *Profile Setting* tab lets you create profiles for different network environments.



On this tab, you can click the following buttons:

- **Add** to create new profile.
- **Edit** to edit the currently highlighted profile.
- **Delete** to delete the currently highlighted profile.
- **Connect** to connect to a network using the currently highlighted profile.

About tab

The *About* tab shows the product version including details of the driver, application, and firmware versions. You must use this version number when reporting problems to Dynex.



Troubleshooting

Windows 98

To make sure that the WLAN 802.11g device is installed properly:

- 1 Click **Start, Settings, Control Panel**, then **Network**. Click the **Configuration** tab. If you find the WLAN 802.11g card listed, it means the card is installed properly. If you see a yellow question mark, it means there is a resource conflict.

-OR-

Right-click on the **My Computer** desktop icon, then select **Properties**. Click **Device Manager**, then click on **Network Adapter**. If you find the WLAN 802.11g card listed, it means the card is installed properly. If you see a yellow question mark, it means there is a resource conflict.

- 2 Click on the card and then on the card service. You will see the status of the card. If there is a yellow sign either on the card, check the following:
 - Check to see if your computer has a free IRQ. Free an IRQ by assigning the same IRQ to some devices. For example COM 1 and COM 2 can be assigned the same IRQ values.
 - Make sure that you have inserted the correct card and have installed the correct driver.

Windows 2000

To make sure that the WLAN 802.11g device is installed properly:

- 1 Use Windows 2000 Diagnostics to see if there is any conflict in the resource allocation of the I/O Address or IRQ allocations. If you find that the IRQ or I/O Addresses are already assigned to other devices, you must change that value. The I/O Address must be 40h bytes long.
- 2 Go to the Control Panel. Double-click on the card and view the WLAN card. Double-clicking on the card shows you the card information, driver name, and the driver file. If you do not find the names, there are some problems and the driver is not installed correctly. Reinstall the driver.
- 3 Check the PnP BIOS setup menu, then click **No**.

Federal Communication Commission Interference Statement

This equipment has been tested and found to comply with the limits for a Class B digital device, pursuant to Part 15 of the FCC Rules. These limits are designed to provide reasonable protection against harmful interference in a residential installation. This equipment generates, uses and can radiate radio frequency energy and, if not installed and used in accordance with the instructions, may cause harmful interference to radio communications. However, there is no guarantee that interference will not occur in a particular installation. If this equipment does cause harmful interference to radio or television reception, which can be determined by turning the equipment off and on, the user is encouraged to try to correct the interference by one of the following measures:

- Reorient or relocate the receiving antenna.
- Increase the separation between the equipment and receiver.
- Connect the equipment into an outlet on a circuit different from that to which the receiver is connected.
- Consult the dealer or an experienced radio/TV technician for help.

This device complies with Part 15 of the FCC Rules. Operation is subject to the following two conditions: (1) This device may not cause harmful interference, and (2) this device must accept any interference received, including interference that may cause undesired operation.

FCC Caution: Any changes or modifications not expressly approved by the party responsible for compliance could void the user's authority to operate this equipment.

IMPORTANT NOTE:

FCC Radiation Exposure Statement:

This equipment complies with FCC radiation exposure limits set forth for an uncontrolled environment. This equipment should be installed and operated with minimum distance 20cm between the radiator & your body.

This transmitter must not be co-located or operating in conjunction with any other antenna or transmitter.

Dynex declares that DX-WGDTC (FCC ID: MXF-P950605G) is limited in CH1~CH11 for 2.4 GHz by specified firmware controlled in U.S.A.

IC statement

IC statement

Operation is subject to the following two conditions:

- 1) This device may not cause interference and
- 2) This device must accept any interference, including interference that may cause undesired operation of the device.

This device has been designed to operate with an antenna having a maximum gain of **4.57** dBi. Antenna having a higher gain is strictly prohibited per regulations of Industry Canada. The required antenna impedance is 50 ohms.

IMPORTANT NOTE:

IC Radiation Exposure Statement:

This equipment complies with IC radiation exposure limits set forth for an uncontrolled environment. This equipment should be installed and operated with minimum distance 20cm between the radiator & your body.

This transmitter must not be co-located or operating in conjunction with any other antenna or transmitter.

DYNEX™

www.dynexproducts.com (800) 305-2204
Distributed by Best Buy Purchasing, LLC
7601 Penn Ave. South, Richfield, MN 55423 U.S.A.
Distribué par Best Buy Purchasing, LLC
7601 Penn Ave. South, Richfield, MN 55423 É.-U.
Distribuido por Best Buy Purchasing, LLC
7601 Penn Ave. South, Richfield, MN 55423 U.S.A.

R1