

D-Link[®]

Version DRAFT | 04/29/2014

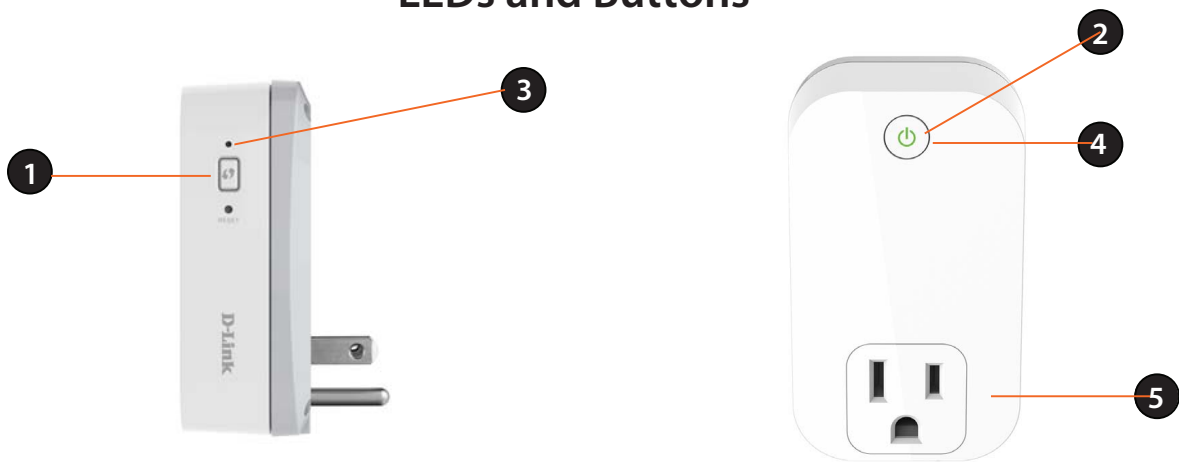


User Manual

mydlink™ Wi-Fi Smart Plug

DSP-W110

Hardware Overview LEDs and Buttons



1	WPS/Reset Button	WPS	Press for one second to start the WPS connection process. The Status LED will start to blink.
		Reset	Press and hold for 10 seconds to reset the device back to the factory default settings.
2	ON/OFF Button	Press to turn the device ON or OFF.	
3	Status LED	Solid Green	The device is successfully connected to your network.
		Blinking Green	During the WPS process.
		Blinking Orange	The device is attempting to communicate with your wireless network.
		Solid Red	During power on/boot process or device is defective.
		Off	The device is powered off. Press the on/off button to turn on.
4	Power LED	Solid Green	The device is powered on.
		Off	The device is turned off or not receiving power. Press the on/off button to turn on. If the device will not power on, try another outlet.
5	Plug	Connect your appliances, lamps, and other devices to monitor.	

Installation and Setup

To install your Smart Plug, download and install the mydlink Wi-Fi Smart Plug app. This app will walk you through installing and configuring your Smart Plug.

Step 1

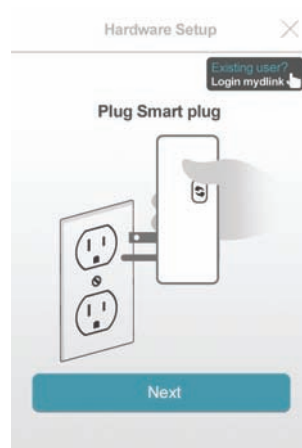
Download the app from the App Store (iOS) or Google Play (Android).

Step 2

Once installed, launch the app.

Step 3

Plug in your Smart Plug in an available outlet. If the Power LED does not come on, press the On/Off Button. The Power LED will turn on. Press **Next** to continue.



Section 2 - Installation and Setup

Step 4

When the Status LED is blinking orange, press **Next**.



Step 5

If your router supports WPS, press the WPS button on your router. Press **Next** to continue. Please refer to your router's documentation if you are unsure if your router supports WPS.

If your router does not support WPS or you want to manually connect to your wireless router, press **Manual Setup** and skip to *Step 6 - Manual* on page 11.



Section 2 - Installation and Setup

Step 6 - WPS

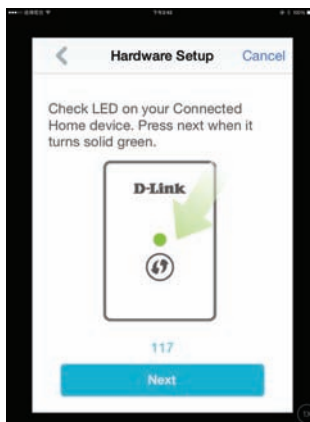
Press the WPS button on your Smart Plug. The Status LED will start to blink green. Allow up to two minutes to connect to your router. Press **Next** to continue.

Note: You must press the WPS button on your router and the Smart Plug within two minutes.



Step 7 - WPS

After about two minutes, the Status LED will turn solid green. This indicates that the Smart Plug has successfully connected to your wireless router. Press **Next** to continue.



Section 2 - Installation and Setup

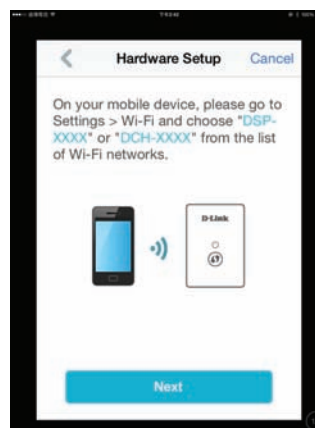
Step 6 - Manual

You must connect to the Smart Plug directly. Do not close this app.

On your device, go to **Settings > Wi-Fi**. Select the network called DSP-xxxx or DSP-xxxx_AC.

Note: xxxx represents numbers and/or letters that are unique to your Smart Plug device. For the exact network name (SSID), refer to the Quick Install card that came with the product.

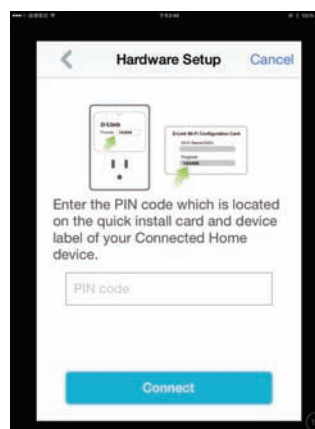
Press **Next** to continue.



Step 7 - Manual

Enter the PIN code and press **Connect**.

This code is located both on the front of the Smart Plug and the Quick Install card.



Section 2 - Installation and Setup

Step 8 - Manual

A list of available wireless networks will appear. Press your wireless network (the SSID of your wireless router).



Step 9 - Manual

If you have secured your wireless network, enter your Wi-Fi password and click **Join**.

Continue with step 10 on the next page.



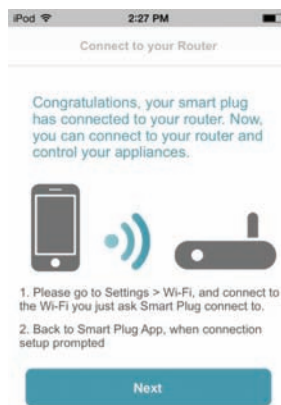
Section 2 - Installation and Setup

Step 10

Once you connect, you will need to connect to your mobile device or tablet (that you are currently running the app from) to your wireless router (if you are not already). Make sure you keep this app running.

On your device, go to **Settings > Wi-Fi**. Connect to your wireless router and enter your Wi-Fi password (if you have one).

Go back to this app and press **Next** to continue.



Step 11

Your device will now scan your network for Smart Plugs.

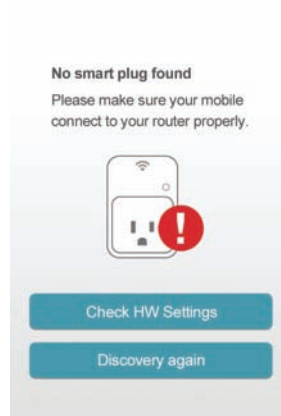


Section 2 - Installation and Setup

Step 12

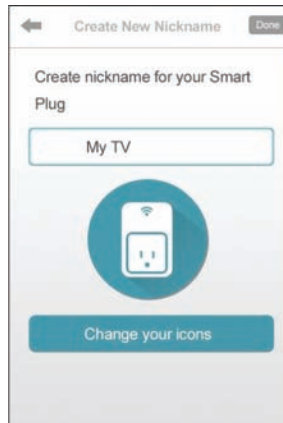
If you have received this error message, please do the following:

- Please make sure your mobile device is connected to your router.
- Make sure the Power LED and Status LEDs on your Smart Plug are both solid green.
- Press **Hardware Settings** and verify the settings.
- Press **Discovery Again** to rescan.



Step 13

Enter a nickname for your Smart Plug. Click **Change your Icons** to change the icon for your device or click **Done** in the upper right corner to finish.



Section 2 - Installation and Setup

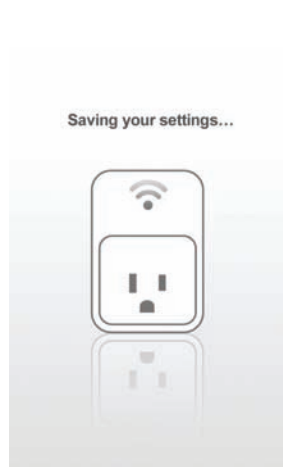
Step 14

Select an icon that represents the device plugged into your Smart Plug and then press **Use** in the upper right corner. If you do not want to change the icon, press **Cancel**.



Step 15

Your settings will now save.



Appendix - Warranty

Federal Communication Commission Interference Statement

This equipment has been tested and found to comply with the limits for a Class B digital device, pursuant to Part 15 of the FCC Rules. These limits are designed to provide reasonable protection against harmful interference in a residential installation. This equipment generates, uses and can radiate radio frequency energy and, if not installed and used in accordance with the instructions, may cause harmful interference to radio communications. However, there is no guarantee that interference will not occur in a particular installation. If this equipment does cause harmful interference to radio or television reception, which can be determined by turning the equipment off and on, the user is encouraged to try to correct the interference by one of the following measures:

- Reorient or relocate the receiving antenna.
- Increase the separation between the equipment and receiver.
- Connect the equipment into an outlet on a circuit different from that to which the receiver is connected.
- Consult the dealer or an experienced radio/TV technician for help.

FCC Caution: Any changes or modifications not expressly approved by the party responsible for compliance could void the user's authority to operate this equipment.

This device complies with Part 15 of the FCC Rules. Operation is subject to the following two conditions: (1) This device may not cause harmful interference, and (2) this device must accept any interference received, including interference that may cause undesired operation.

IMPORTANT NOTE:

Radiation Exposure Statement:

This equipment complies with FCC radiation exposure limits set forth for an uncontrolled environment. This equipment should be installed and operated with minimum distance 20cm between the radiator & your body.

This transmitter must not be co-located or operating in conjunction with any other antenna or transmitter.

Country Code selection feature to be disabled for products marketed to the US/CANADA Industry Canada statement:

Appendix D - Warranty

IC statement

This device complies with Industry Canada licence-exempt RSS standard(s). Operation is subject to the following two conditions:

- (1) this device may not cause interference, and
- (2) this device must accept any interference, including interference that may cause undesired operation of the device.

Le présent appareil est conforme aux CNR d'Industrie Canada applicables aux appareils radio exempts de licence. L'exploitation est autorisée aux deux conditions suivantes :

- (1) l'appareil ne doit pas produire de brouillage, et
- (2) l'utilisateur de l'appareil doit accepter tout brouillage radioélectrique subi, même si le brouillage est susceptible d'en compromettre le fonctionnement.

Radiation Exposure Statement:

This equipment complies with IC radiation exposure limits set forth for an uncontrolled environment. This equipment should be installed and operated with minimum distance 20cm between the radiator & your body.

Déclaration d'exposition aux radiations:

Cet équipement est conforme aux limites d'exposition aux rayonnements IC établies pour un environnement non contrôlé. Cet équipement doit être installé et utilisé avec un minimum de 20 cm de distance entre la source de rayonnement et votre corps

Technical Specifications

Standards

- IEEE 802.11n
- IEEE 802.11g

Support Functions

- Smart remote control
- Push notifications
- Power scheduling

Security

- WPA
- WPA2
- WPS (Wi-Fi Protected Setup)

Temperature

- Operating: 0 to 25 °C
- Storage: -20 to 65 °C (-4 to 149 °F)

Humidity

- Operation: 10% to 90% non-condensing
- Storage: 5% to 95% non-condensing

Power Input

- Input: 100-120Vac 50/60Hz, 15 A
- Output: 100-120Vac, 50/60Hz, 15 A General Purpose

Power Consumption

- Maximum 5 W (excluding AC output of Socket Outlet)

LEDs

- Power
- Status

Certifications

- FCC
- UL

Dimensions

- 90 x 54 x 32 mm

Weight

- TBD

* Maximum wireless signal rate derived from IEEE Standard 802.11g and 802.11n specifications. Actual data throughput will vary. Network conditions and environmental factors, including volume of network traffic, building materials and construction, and network overhead, lower actual data throughput rate. Environmental factors will adversely affect wireless signal range.