

ASUS[®]

RT-N12, RT-N12 C1 SuperSpeed N Router

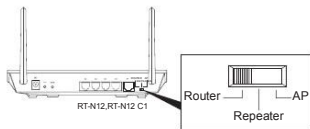


Quick Start Guide

NOTE: For more details on the features of the wireless router, refer to the user manual included in the Utility CD.

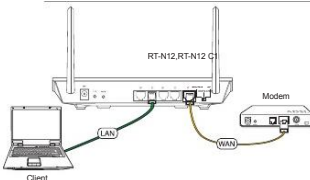
Setting up a Home Network - Router Mode

1. Choose the Router mode.

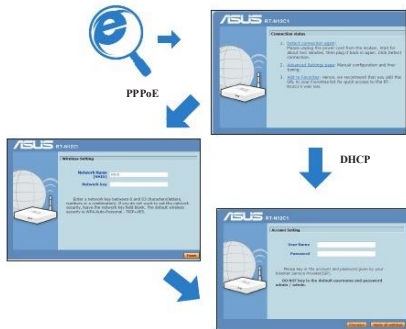


2. Connect your devices.

NOTE: Before you proceed, unplug and disconnect the wires/cables from your existing modem setup. After two minutes, replug and reconnect the wires/cables for your network environment.



3. Launch the web browser and follow the Quick Internet Setup (QIS) steps.



NOTE: If the QIS web page does not appear after launching the web browser, disable the proxy settings on the web browser.

4. Setup is completed.



繁體中文

1. 請先讀取快速指南。
2. 檢查網路環境。
3. 選擇網路模式。請依照網路環境選擇網路模式。請分別選擇無線網路模式、有線網路模式或無線網路模式 + 有線網路模式。
4. 連接您的裝置。
5. 開啟無線網路。請依照無線網路環境選擇無線網路設定 (WLAN) 的網路模式。
6. 設定無線網路。
7. 設定無線網路安全。
8. 設定完成。

簡體中文

1. 請先讀取快速指南。
2. 檢查網路環境。
3. 選擇網路模式。請依照網路環境選擇網路模式。請分別選擇無線網路模式、有線網路模式或無線網路模式 + 有線網路模式。
4. 連接您的裝置。
5. 開啟無線網路。請依照無線網路環境選擇無線網路設定 (WLAN) 的網路模式。
6. 設定無線網路。
7. 設定無線網路安全。
8. 設定完成。

Bahasa Indonesia

1. Baca buku Panduan.
2. Periksa konfigurasi jaringan.
3. Pilih mode Router.
4. Hubungkan perangkat.
5. Aktifkan jaringan nirkabel. Pilih mode konfigurasi jaringan yang akan digunakan untuk konfigurasi jaringan nirkabel. Pilih mode konfigurasi jaringan nirkabel yang akan digunakan untuk konfigurasi jaringan nirkabel.
6. Atur konfigurasi jaringan nirkabel.
7. Atur konfigurasi keamanan jaringan nirkabel.
8. Selesai.

Bahasa Malaysia

1. Baca buku Panduan.
2. Periksa konfigurasi jaringan.
3. Pilih mode Router.
4. Hubungkan peranti.
5. Aktifkan rangkaian nirkabel. Pilih mode konfigurasi rangkaian nirkabel yang akan digunakan untuk konfigurasi rangkaian nirkabel. Pilih mode konfigurasi rangkaian nirkabel yang akan digunakan untuk konfigurasi rangkaian nirkabel.
6. Atur konfigurasi rangkaian nirkabel.
7. Atur konfigurasi keselamatan rangkaian nirkabel.
8. Selesai.

Türkçe

1. Kullanıcı kılavuzunu okuyun.
2. Ağ yapılandırmasını kontrol edin.
3. Modem seçin.
4. Cihazları bağlayın.
5. Kablosuz ağları etkinleştirin. Kablosuz ağ yapılandırma modunu seçin. Kablosuz ağ yapılandırma modunu seçin.
6. Kablosuz ağ yapılandırmasını ayarlayın.
7. Kablosuz ağ güvenliği ayarlayın.
8. İşlem tamamlandı.



ASUS Recycling/Takeback Services

ASUS recycling and takeback programs come from our commitment to the highest standards for protecting our environment. We are providing solutions for you to be able to responsibly recycle our products, batteries, other components, as well as the packaging materials. Please go to <http://csr.asus.com/english/Takeback.htm> for the detailed recycling information in different regions.

REACH

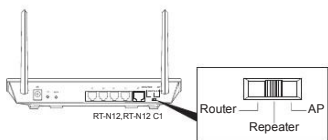
Complying with the REACH (Registration, Evaluation, Authorisation, and Restriction of Chemicals) regulatory framework, we published the chemical substances in our products at [ASUS REACH website at http://csr.asus.com/english/REACH.htm](http://csr.asus.com/english/REACH.htm)

Manufacturer:	ASUSTEK COMPUTER INC. Tel: +886-2-2994-3447 Address: No. 150, LI-FE RD., PEITOU, TAIPEI 112, TAIWAN
Authorised representative in Europe:	ASUS Computer GmbH Address: HARKORT STR. 21-23, 40880 RATINGEN, GERMANY
Authorised distributors in Turkey:	BOGAZICI BİLİŞİM GİSVER SAN. VE TİC. A.Ş. Tel: +90 212 331 1000 Address: AYAZGA MAHLI KEMERBURGAZ CAD. NO:10 AYAZGAZİSTANBUL CIZGI Elektronik San. Tic. Ltd. Sti. Tel: +90 212 3567070 Address: CEMAL SURURU CAD. HALİM MERİÇİSİ MERKEZİ No: 15/C D-5-6 34394 MECDİYEKÖY/İSTANBUL

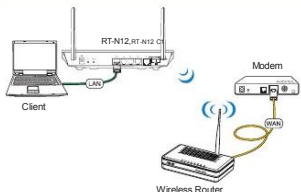
EEE Yönetmeliğine Uygundur.

Extending Your Wireless Network- Repeater Mode

1. Choose the Repeater mode.



2. Connect your devices.



3. Launch the web browser, select a wireless network from the list, and click Connect.



NOTE: If the QSS web page does not appear after launching the web browser, disable the proxy settings in the web browser.

4. Setup is completed.



繁體中文

1. 檢查狀態 - 設定中...
2. 新增無線網路 - 設定中...
3. 選擇無線網路 - 設定中...
4. 設定完成

簡體中文

1. 检查状态 - 设置中...
2. 添加无线网络 - 设置中...
3. 选择无线网络 - 设置中...
4. 设置完成

Bahasa Indonesia

1. Periksa status - Pengaturan sedang berlangsung...
2. Tambahkan jaringan nirkabel - Pengaturan sedang berlangsung...
3. Pilih jaringan nirkabel - Pengaturan sedang berlangsung...
4. Konfigurasi selesai

Bahasa Malaysia

1. Periksa status - Pengaturan sedang berlangsung...
2. Tambahkan jaringan nirkabel - Pengaturan sedang berlangsung...
3. Pilih jaringan nirkabel - Pengaturan sedang berlangsung...
4. Konfigurasi selesai

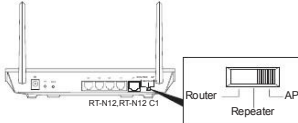
Tab	Address	Request	Device
1	192.168.1.1	Discover	Client
2	192.168.1.1	Discover	Client
3	192.168.1.1	Discover	Client
4	192.168.1.1	Discover	Client

Türkçe

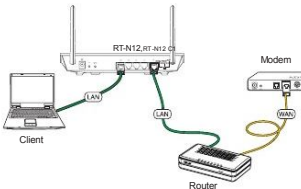
1. Durum kontrolü yapılıyor.
2. Yeni ağlar ekleniyor.
3. Yeni ağlar ekleniyor. Ayarlar bitene kadar bekleyin.
4. Kurulum tamamlandı. Web sayfasını yeniden başlatın.

Extending Your Wired Network - AP Mode

1. Choose the AP mode.



2. Connect your devices.



3. Launch the utility and Device Discovery.



Utility CD



Client



Device Discovery

NOTE: To launch Device Discovery, click Start > Program > ASUS Utility > RT-N12 Wireless Router > Device Discovery.

4. Setup is completed.



Tab	Address	Request	Device
1	192.168.1.1	Discover	Discovery
2	192.168.1.1	Discover	Discovery
3	192.168.1.1	Discover	Discovery
4	192.168.1.1	Discover	Discovery

Bahasa Indonesia

1. Periksa status AP
2. Tambahkan perangkat
3. Pilih jaringan nirkabel
4. Konfigurasi selesai

Bahasa Malaysia

1. Periksa status AP
2. Tambahkan peranti anda
3. Pilih jaringan nirkabel
4. Konfigurasi selesai

Türkçe

1. AP durumu kontrol ediliyor
2. Donanılar ekleniyor
3. Ağlar ekleniyor
4. Kurulum tamamlandı

ASUS Contact information

ASUSTek COMPUTER INC. (Asia)
15 Li Te Road, Taipei, Taiwan 11299
www.asus.com/ta

Technical Support
Telephone: +88622962447
Support Fax: +88622807696
Software download: support.asus.com*

ASUS COMPUTER INTERNATIONAL (America)
Address: 800 Corporate Way, Fremont, CA 94539, USA
Telephone: +15102958883
Fax: +151029338713
Website: usa.asus.com
Software download: support.asus.com*

ASUS COMPUTER GmbH (Germany and Austria)
Address: Harkort Str. 21-23, D-40880 Ratingen, Germany
Fax: +492102959911
Website: www.asus.com/de
Online contact: www.asus.com/de/taile

Technical Support
Telephone (Component): +491805010925
Telephone (System/Notebook/Free/LCD): +491805010926
Fax: +492102959911
Online support: support.asus.com*

* Available on this site is an online Technical Inquiry Form that you can fill out to contact technical support.

This equipment has been tested and found to comply with the limits for a Class B digital device, pursuant to part 15 of the FCC Rules. These limits are designed to provide reasonable protection against harmful interference in a residential installation. This equipment generates, uses and can radiate radio frequency energy and, if not installed and used in accordance with the instructions, may cause harmful interference to radio communications. However, there is no guarantee that interference will not occur in a particular installation.

If this equipment does cause harmful interference to radio or television reception, which can be determined by turning the equipment off and on, the user is encouraged to try to correct the interference by one or more of the following measures:

- Reorient or relocate the receiving antenna.
- Increase the separation between the equipment and receiver.
- Connect the equipment into an outlet on a circuit different from that to which the receiver is connected.
- Consult the dealer or an experienced radio/TV technician for help.

Changes or modifications not expressly approved by the party responsible for compliance could void the user's authority to operate the equipment.

This equipment complies with FCC radiation exposure limits set forth for an uncontrolled environment.

This equipment should be installed and operated with minimum distance 20 cm between the radiator & your body.

For product available in the USA/Canada, only channel 1 ~ 11 can be operated. Selection of other channels is not possible.