

AW-GM320

IEEE 802.11 g/b Wireless Module

User's Manual

Inspired by wireless

Confidential

- Warning!! This is a message from Azurewave and the information you are viewing now is strictly confidential and is a knowledge property to Azurewave.
- Unauthorized use of this document is prohibited and Azurewave retains the right for legal actions against any loss suffered or expenditure due to the misuse of any information from this document.

I. Introduction

i. Overview

AzureWave IEEE 802.11b/g WLAN module, ---AW-GM320 is targeted to mobile devices including, Digital Still Cameras (DSCs), Portable Media Players (PMPs), and Gaming Devices, Notebook which need small footprint package, low power consumption, multiple interfaces and OS support. By using AW-GM320, the customers can easily enable the Wi-Fi embedded applications with the benefits of high design flexibility, short development cycle, and quick time-to-market.

Compliance with the IEEE 802.11b/g standard, the AW-GM320 uses Direct Sequence Spread Spectrum (DSSS), Orthogonal Frequency Division Multiplexing (OFDM), DBPSK, DQPSK, CCK and QAM baseband modulation technologies. A high level of integration and full implementation of the power management functions specified in the IEEE 802.11 standard minimize the system power requirements by using AW-GM320. In addition to the support of WPA/WPA2 and WEP 64-bit and 128-bit encryption, the AW-GM320 also supports the IEEE 802.11i security standard through the implementation of Advanced Encryption Standard (AES)/Counter Mode CBC-MAC Protocol (CCMP), and WEP with TKIP security mechanisms. The AW-GM320also supports IPsec with DES/3DES/ASE encryption and MD5/SHA-1 authentication. For the video, voice and multimedia applications, the AW-GM320 supports 802.11e Quality of Service (QoS). The AW-GM320 supports SDIO and G-SPI for WLAN to the host processor.

ii. Features

- ✚ SDIO, G-SPI interfaces support for WLAN
- ✚ Multiple power saving modes for low power consumption
- ✚ IEEE 802.11i for advanced security
- ✚ Quality of Service (QoS) support for multimedia applications
- ✚ WLAN drivers for Vista, WinXP, WinCE, Linux 2.6, WinMobile 5.0/6.0
- ✚ Lead-free design

iii. Product Review

1. Connection Mode

☉Infrastructure Mode

Infrastructure mode needs an access point to establish the network, which can provide wireless accesses within valid range for users to communicate with others or transmit data with a wired network. There are several benefits of Infrastructure networking:

√ Roaming: a wireless LAN enabled computer can physically move from the operating range of one access point to the other without losing connection. There is a quick association made between new access point and wireless device as the computer traverses from the coverage of one access point to another.

√ Range Extension: each wireless LAN enabled computer within the range of access point can communicate with other wireless LAN enabled computers within the effective range from the access point.

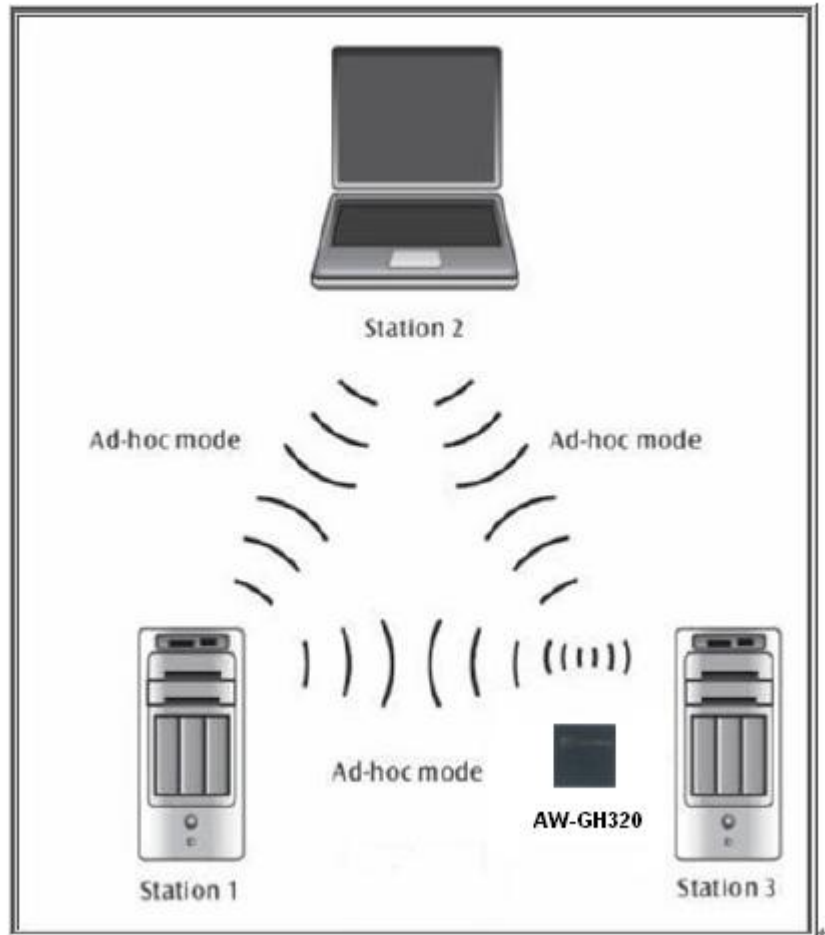
√ Wired to wireless LAN connection: the access point will establish a bridge between wireless LAN and other wired counterparts.



Infrastructure Mode

©Ad-hoc Mode

The difference between Ad-hoc mode and Infrastructure mode is that Ad-hoc mode does not need the access point or router. When you use this mode, your computer will act as a server within the valid range and connect directly to others in the same LAN workgroup.



Ad-hoc Mode

It is recommended to choose this mode when there is no access point showed on your wireless network.

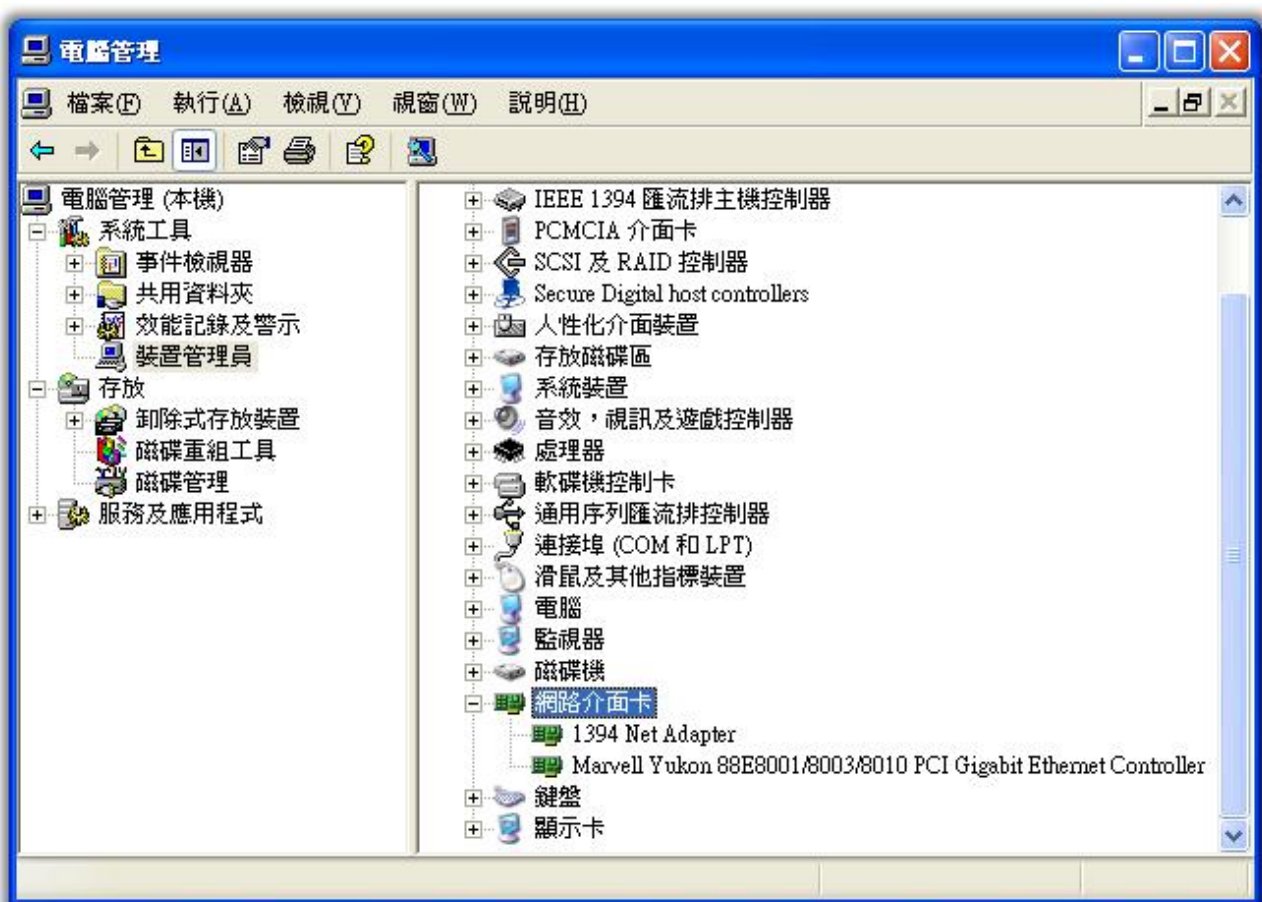
II. Installation

i. System Requirements

- *Minimum of 64MB system memory
- *Operating system: XP/Vista
- * Driver installation

ii. Setup: Windows XP OS

1. Open Computer Management->Device Management



2. Insert the AW-GM320 SDIO card into PC's SDIO slot
3. When you see the following screen, choose "No, not this time"



4. Click Next
5. Choose "Install from a list or specific location(Advanced)"



6. Click Next
7. Choose “Don’t search. I will choose the driver to install.”

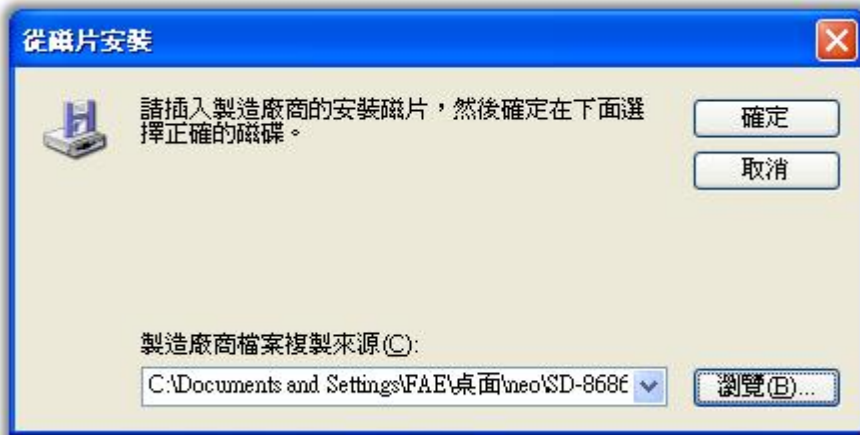


8. Click Next
9. Choose install from “Have Disk”



10. Click Next

11. Browse the AW-GM320 driver and click OK

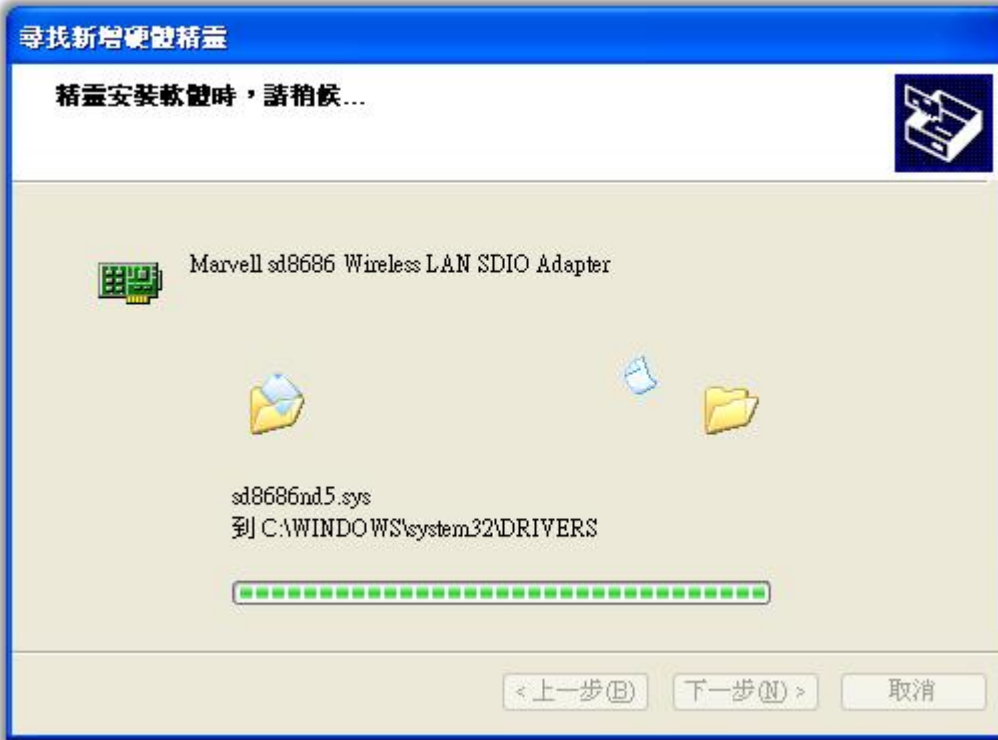


12. Choose AW-GM320 driver and click Next

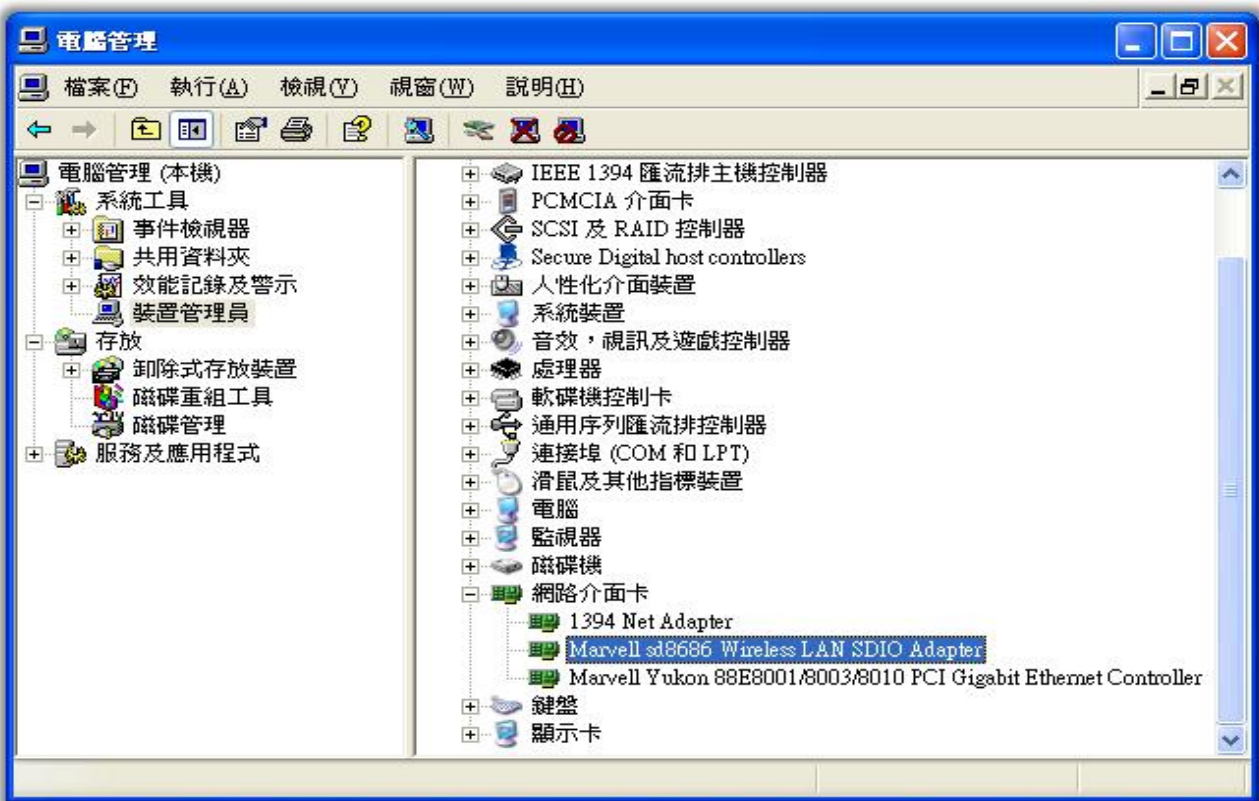


13. Click Next

14. Then, AW-GM320 driver will be installed.



15. AW-GM320 driver install finish

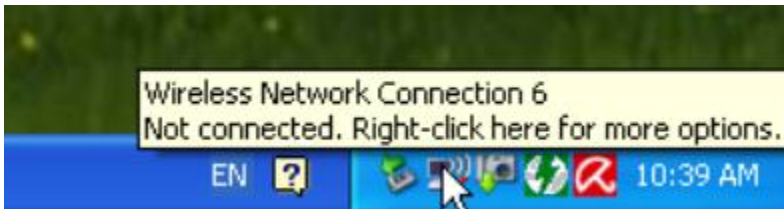


III. Network Connection

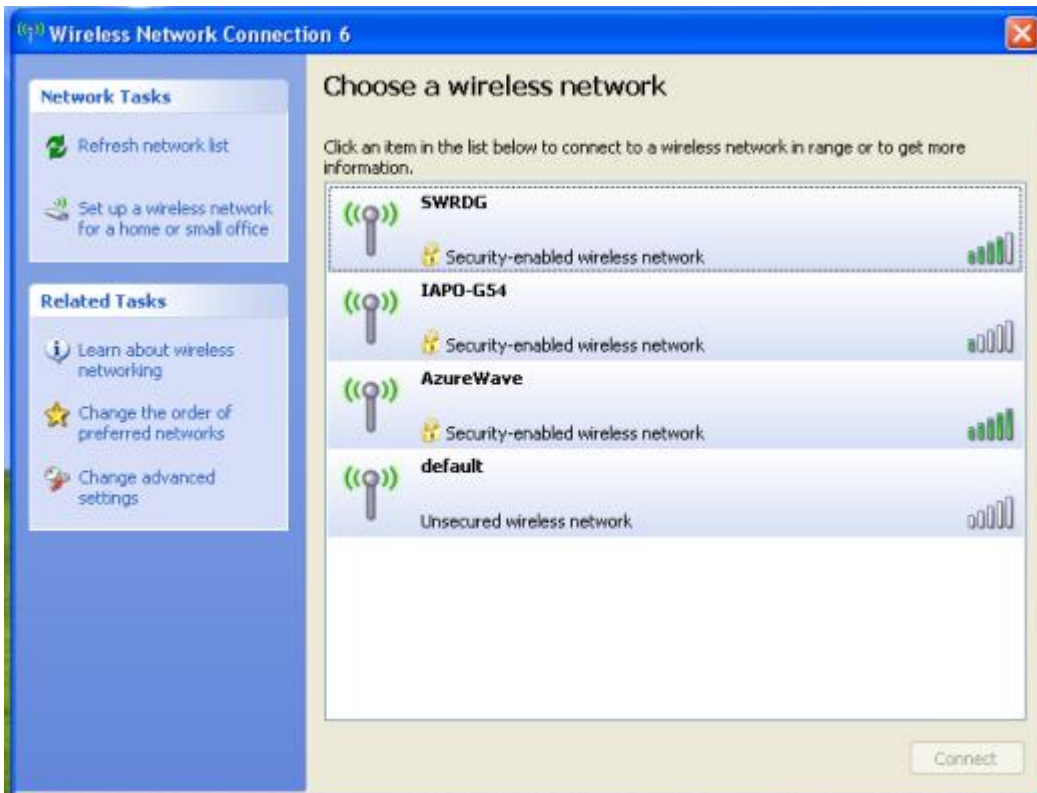
i. For Windows XP OS

Please see the following steps to setup network connection for Windows XP.

1. Find the network icon on the desktop shortcut and right-click on it. Choose “View Available Wireless networks”



2. You will see several options, please select one and click [Connect]



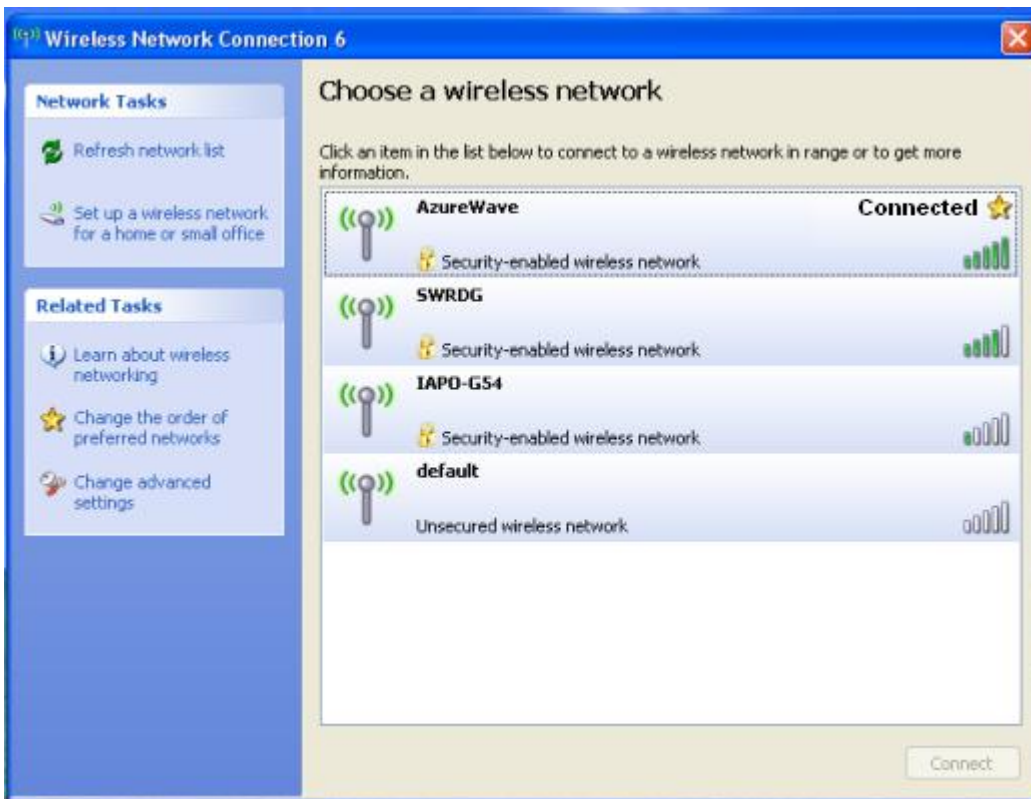
3. Please wait for few seconds to let system connecting to selected wireless network



4. You may need to type the network key when it is required (if the network doesn't request the key, the network will connect directly.)



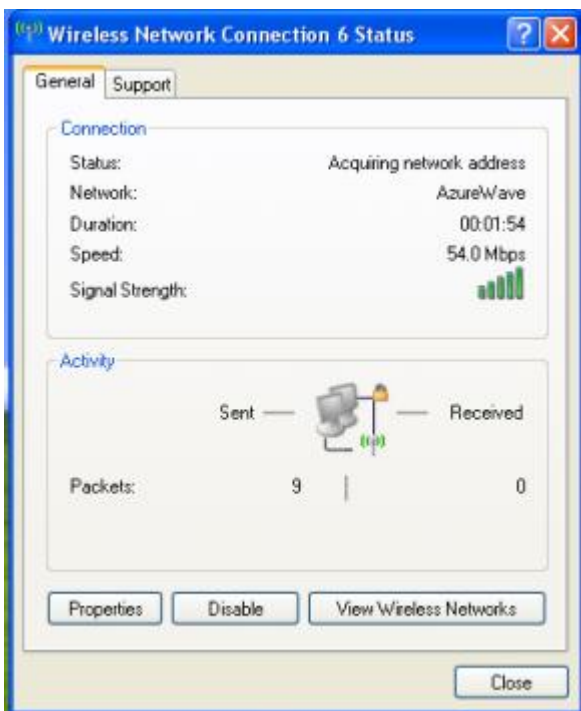
5. Now the selected wireless network is connected



6. You can check the connection status by clicking [Status] in the pop-up dialogue



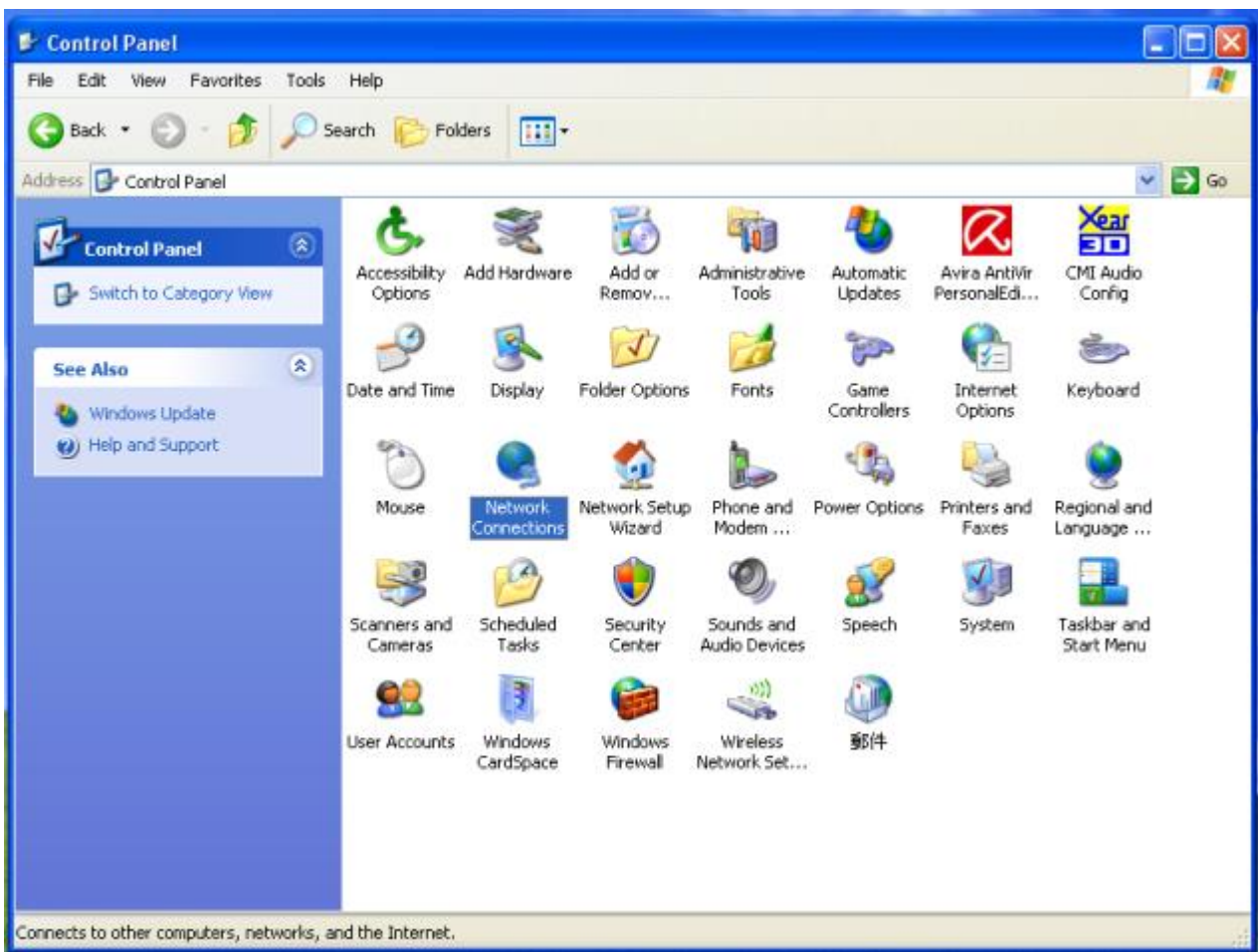
7. Here is the wireless network connection status



IV. Setup for Ad-hoc Mode

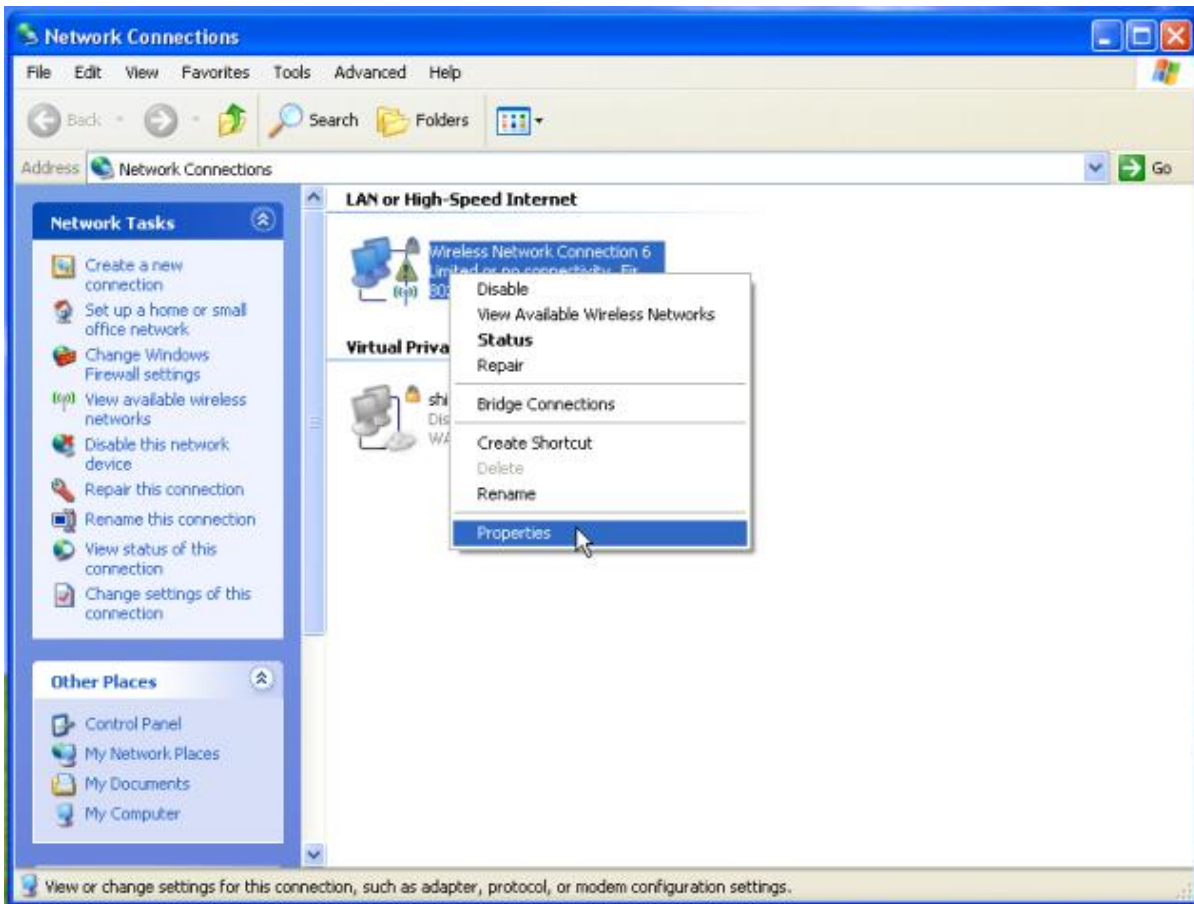
i. For Windows XP OS

If you want to choose Ad-hoc mode, please right-click network icon on desktop shortcut and choose “Open Network Connections”, or go to [Control Panel] and double-click “Network Connection” icon.

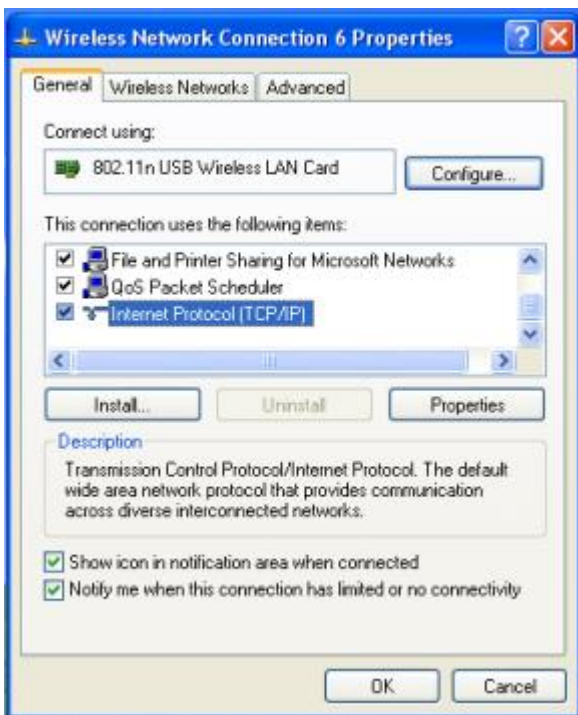


When you see the “Network Connections” screen, please follow the steps below to setup Ad-hoc mode.

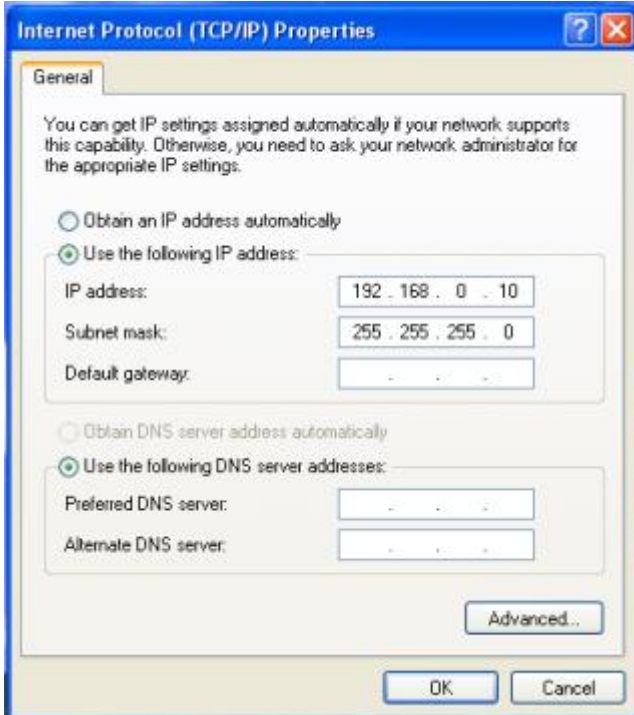
1. Double-click “Wireless Network Connection” icon to enter its properties



2. Click "General" tab and double-click the “Internet Protocol (TCP/IP)” item

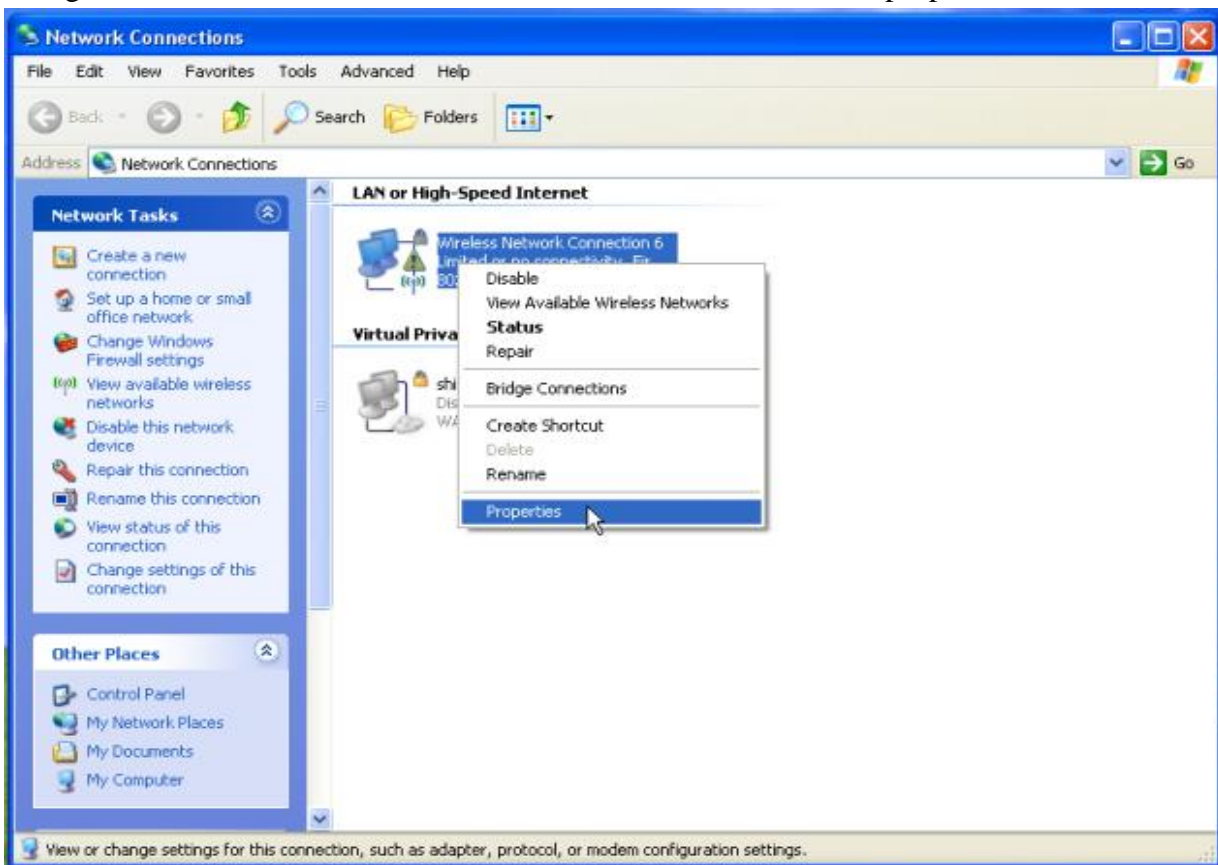


3. Choose “Use the following IP address:” and type the IP address; then click [OK]



*Note: the IP address of the other wireless card should be set with the same subnet mask

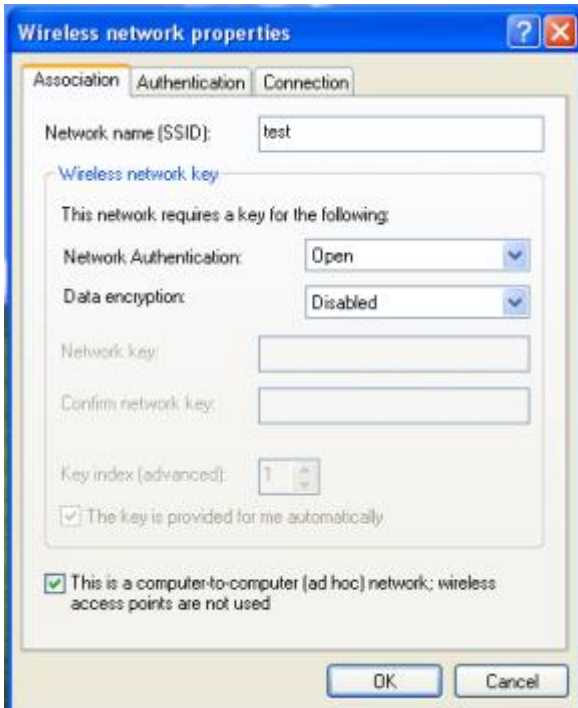
4. Right-click the “Wireless Network Connection” icon and choose “properties”



5. Select “Wireless Network” tab and choose [Add]



6. Type “Network name (SSID)” and choose “Data encryption” if you want to protect the network security



7. When you see the dialogue showing your network is unsecured, please click [Continue Anyway]

8. Now your network is in Ad-hoc mode



Europe – EU Declaration of Conformity

This device complies with the essential requirements of the R&TTE Directive 1999/5/EC. The following test methods have been applied in order to prove presumption of conformity with the essential requirements of the R&TTE Directive 1999/5/EC:

- **EN 60950-1: 2006**
Safety of Information Technology Equipment

- **EN50392 : (2004-01)**
Generic standard to demonstrate the compliance of electronic and electrical apparatus with the basic restrictions related to human exposure to electromagnetic fields (0 Hz - 300 GHz)

- **EN 300 328 V1.7.1: (2006-10)**
Electromagnetic compatibility and Radio spectrum Matters (ERM); Wideband Transmission systems; Data transmission equipment operating in the 2,4 GHz ISM band and using spread spectrum modulation techniques; Harmonized EN covering essential requirements under article 3.2 of the R&TTE Directive

- **EN 301 489-1 V1.6.1: (2005-09)**
Electromagnetic compatibility and Radio Spectrum Matters (ERM); ElectroMagnetic Compatibility (EMC) standard for radio equipment and services; Part 1: Common technical requirements

- **EN 301 489-17 V1.2.1 (2002-08)**
Electromagnetic compatibility and Radio spectrum Matters (ERM); ElectroMagnetic Compatibility (EMC) standard for radio equipment and services; Part 17: Specific conditions for 2,4 GHz wideband transmission systems and 5 GHz high performance RLAN equipment








This device is a 2.4 GHz wideband transmission system (transceiver), intended for use in all EU member states and EFTA countries, except in France and Italy where restrictive use applies.

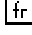



In Italy the end-user should apply for a license at the national spectrum authorities in order to obtain authorization to use the device for setting up outdoor radio links and/or for supplying public access to telecommunications and/or network services.

This device may not be used for setting up outdoor radio links in France and in some areas the RF output power may be limited to 10 mW EIRP in the frequency range of 2454 – 2483.5 MHz. For detailed information the end-user should contact the national spectrum authority in France.

CE 0560 !

- Switch off the radio components (Bluetooth or wireless LAN) on the device when you are in a hospital, an operating room or near a medical electronics system. The transmitted radio waves can impair the operation of the medical devices.
- Keep the device at least 20 cm from a pacemaker, as otherwise the proper operation of the pacemaker may be impaired by radio waves.
- The transmitted radio waves can cause an unpleasant humming in hearing aids.
- Switch off the device when you are in an aircraft or driving in a car.
- Do not let the device near flammable gases or into hazardous environments (e.g. paintshops) with radio components switched on, as the transmitted radio waves can cause an explosion or a fire.

 Český [Czech]	<i>[Jméno výrobce]</i> tímto prohlašuje, že tento <i>[typ zařízení]</i> je ve shodě se základními požadavky a dalšími příslušnými ustanoveními směrnice 1999/5/ES.
 Dansk [Danish]	Undertegnede <i>[fabrikantens navn]</i> erklærer herved, at følgende udstyr <i>[udstyrets typebetegnelse]</i> overholder de væsentlige krav og øvrige relevante krav i direktiv 1999/5/EF.
 Deutsch [German]	Hiermit erklärt <i>[Name des Herstellers]</i> , dass sich das Gerät <i>[Gerätetyp]</i> in Übereinstimmung mit den grundlegenden Anforderungen und den übrigen einschlägigen Bestimmungen der Richtlinie 1999/5/EG befindet.
 Eesti [Estonian]	Käesolevaga kinnitab <i>[tootja nimi = name of manufacturer]</i> seadme <i>[seadme tüüp = type of equipment]</i> vastavust direktiivi 1999/5/EÜ põhinõuetele ja nimetatud direktiivist tulenevatele teistele asjakohastele sätetele.
 English	Hereby, <i>[name of manufacturer]</i> , declares that this <i>[type of equipment]</i> is in compliance with the essential requirements and other relevant provisions of Directive 1999/5/EC.
 Español [Spanish]	Por medio de la presente <i>[nombre del fabricante]</i> declara que el <i>[clase de equipo]</i> cumple con los requisitos esenciales y cualesquiera otras disposiciones aplicables o exigibles de la Directiva 1999/5/CE.
 Ελληνική [Greek]	ΜΕ ΤΗΝ ΠΑΡΟΥΣΑ <i>[name of manufacturer]</i> ΔΗΛΩΝΕΙ ΟΤΙ <i>[type of equipment]</i> ΣΥΜΜΟΡΦΩΝΕΤΑΙ ΠΡΟΣ ΤΙΣ ΟΥΣΙΩΔΕΙΣ ΑΠΑΙΤΗΣΕΙΣ ΚΑΙ ΤΙΣ ΛΟΙΠΕΣ

	ΣΧΕΤΙΚΕΣ ΔΙΑΤΑΞΕΙΣ ΤΗΣ ΟΔΗΓΙΑΣ 1999/5/EK.
 Français [French]	Par la présente [<i>nom du fabricant</i>] déclare que l'appareil [<i>type d'appareil</i>] est conforme aux exigences essentielles et aux autres dispositions pertinentes de la directive 1999/5/CE.
 Italiano [Italian]	Con la presente [<i>nome del costruttore</i>] dichiara che questo [<i>tipo di apparecchio</i>] è conforme ai requisiti essenziali ed alle altre disposizioni pertinenti stabilite dalla direttiva 1999/5/CE.
Latviski [Latvian]	Ar šo [<i>name of manufacturer / izgatavotāja nosaukums</i>] deklarē, ka [<i>type of equipment / iekārtas tips</i>] atbilst Direktīvas 1999/5/EK būtiskajām prasībām un citiem ar to saistītajiem noteikumiem.
Lietuvių [Lithuanian]	Šiuo [<i>manufacturer name</i>] deklaruoją, kad šis [<i>equipment type</i>] atitinka esminius reikalavimus ir kitas 1999/5/EB Direktyvos nuostatas.
 Nederlands [Dutch]	Hierbij verklaart [<i>naam van de fabrikant</i>] dat het toestel [<i>type van toestel</i>] in overeenstemming is met de essentiële eisen en de andere relevante bepalingen van richtlijn 1999/5/EG.
 Malti [Maltese]	Hawnhekk, [<i>isem tal-manifattur</i>], jiddikjara li dan [<i>il-mudel tal-prodott</i>] jikkonforma mal-htigijiet essenzjali u ma provvedimenti oħrajn relevanti li hemm fid-Dirrettiva 1999/5/EC.
 Magyar [Hungarian]	Alulírott, [<i>gyártó neve</i>] nyilatkozom, hogy a [<i>... típus</i>] megfelel a vonatkozó alapvető követelményeknek és az 1999/5/EC irányelv egyéb előírásainak.
 Polski [Polish]	Niniejszym [<i>nazwa producenta</i>] oświadczam, że [<i>nazwa wyrobu</i>] jest zgodny z zasadniczymi wymogami oraz pozostałymi stosownymi postanowieniami Dyrektywy 1999/5/EC.
 Português [Portuguese]	[<i>Nome do fabricante</i>] declara que este [<i>tipo de equipamento</i>] está conforme com os requisitos essenciais e outras disposições da Directiva 1999/5/CE.
 Slovensko [Slovenian]	[<i>Ime proizvajalca</i>] izjavlja, da je ta [<i>tip opreme</i>] v skladu z bistvenimi zahtevami in ostalimi relevantnimi določili direktive 1999/5/ES.
Slovensky [Slovak]	[<i>Meno výrobcu</i>] týmto vyhlasuje, že [<i>typ zariadenia</i>] spĺňa základné požiadavky a všetky príslušné ustanovenia Smernice 1999/5/ES.
 Suomi [Finnish]	[<i>Valmistaja = manufacturer</i>] vakuuttaa täten että [<i>type of equipment = laitteen tyyppimerkintä</i>] tyyppinen laite on direktiivin 1999/5/EY oleellisten vaatimusten ja sitä koskevien direktiivin muiden ehtojen mukainen.
 Svenska [Swedish]	Härmed intygar [<i>företag</i>] att denna [<i>utrustningstyp</i>] står i överensstämmelse med de

[Swedish]

väsentliga egenskapskrav och övriga relevanta bestämmelser som framgår av direktiv 1999/5/EG.

Countries:

Austria, Belgium, Cyprus, Denmark, Estonia, Finland, France, Germany, Greece, Hungary, Iceland, Ireland, Italy, Latvia, Lithuania, Luxembourg, Malta, Netherlands, Norway, Poland, Portugal, Romania, Slovenia, Slovak, Spain, Bulgaria, Czech Republic, Switzerland, Sweden & UK.

Inspired by wireless

Confidential

- Warning!! This is a message from Azurewave and the information you are viewing now is strictly confidential and is a knowledge property to Azurewave.
- Unauthorized use of this document is prohibited and Azurewave retains the right for legal actions against any loss suffered or expenditure due to the misuse of any information from this document.

Federal Communication Commission Interference Statement

This equipment has been tested and found to comply with the limits for a Class B digital device, pursuant to Part 15 of the FCC Rules. These limits are designed to provide reasonable protection against harmful interference in a residential installation. This equipment generates, uses and can radiate radio frequency energy and, if not installed and used in accordance with the instructions, may cause harmful interference to radio communications. However, there is no guarantee that interference will not occur in a particular installation. If this equipment does cause harmful interference to radio or television reception, which can be determined by turning the equipment off and on, the user is encouraged to try to correct the interference by one of the following measures:

- Reorient or relocate the receiving antenna.
- Increase the separation between the equipment and receiver.
- Connect the equipment into an outlet on a circuit different from that to which the receiver is connected.
- Consult the dealer or an experienced radio/TV technician for help.

This device complies with Part 15 of the FCC Rules. Operation is subject to the following two conditions: (1) This device may not cause harmful interference, and (2) this device must accept any interference received, including interference that may cause undesired operation.

FCC Caution: Any changes or modifications not expressly approved by the party responsible for compliance could void the user's authority to operate this equipment.

IMPORTANT NOTE:

FCC Radiation Exposure Statement:

This equipment complies with FCC radiation exposure limits set forth for an uncontrolled environment. This equipment should be installed and operated with minimum distance 20cm between the radiator & your body.

This transmitter must not be co-located or operating in conjunction with any other antenna or transmitter.

IEEE 802.11b or 802.11g operation of this product in the U.S.A. is firmware-limited to channels 1 through 11.

This device is intended only for OEM integrators under the following conditions:

- 1) The antenna must be installed such that 20 cm is maintained between the antenna and users, and
- 2) The transmitter module may not be co-located with any other transmitter or antenna,
- 3) For all products market in US, OEM has to limit the operation channels in CH1 to CH11 for 2.4G band by supplied firmware programming tool. OEM shall not supply any tool or info to the end-user regarding to Regulatory Domain change.

As long as 3 conditions above are met, further transmitter test will not be required. However, the OEM integrator is still responsible for testing their end-product for any additional compliance requirements required with this module installed (for example, digital device emissions, PC peripheral requirements, etc.).

IMPORTANT NOTE: In the event that these conditions can not be met (for example certain laptop configurations or co-location with another transmitter), then the FCC authorization is no longer considered valid and the FCC ID can not be used on the final product. In these circumstances, the OEM integrator will be responsible for re-evaluating the end product (including the transmitter) and obtaining a separate FCC authorization.

End Product Labeling

This transmitter module is authorized only for use in device where the antenna may be installed such that 20 cm may be maintained between the antenna and users. The final end product must be labeled in a visible area with the following: "Contains FCC ID: TLZ-GM320".

Manual Information To the End User

The OEM integrator has to be aware not to provide information to the end user regarding how to install or remove this RF module in the user's manual of the end product which integrates this module.

The end user manual shall include all required regulatory information/warning as show in this manual.