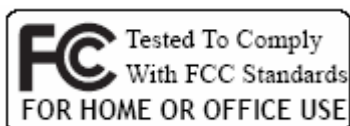


AWUN2462D

Wireless LAN USB Adapter

QUICK START GUIDE

VERSION 1.2
2009/06/07



1 BOX CONTENTS



Wireless LAN Adapter



Quick Start Guide



Driver CD

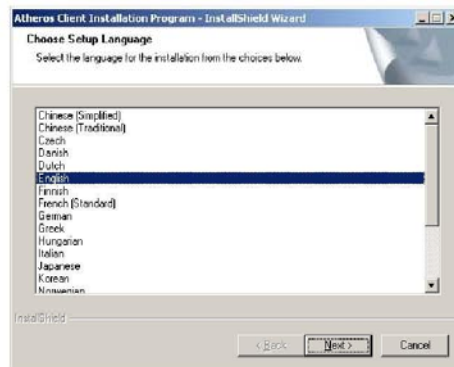
2 INSTALL DRIVER / UTILITY

The installation & driver CD will automatically activate the autorun installation program after you insert the disk into your CD drive.

Note: WLAN ISM Band Dongle supports IEEE 802.11b/g/n

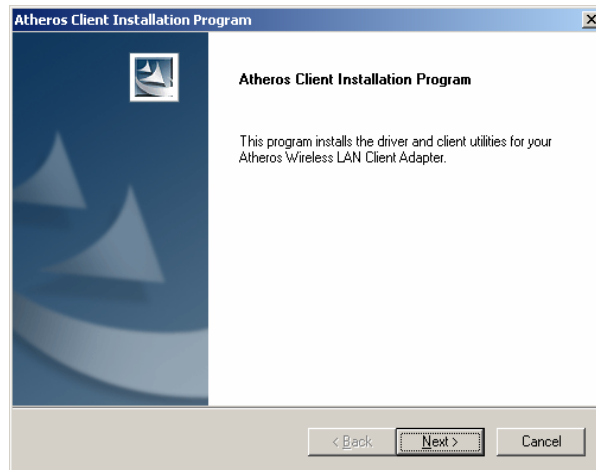
Step 1 :

Insert the installation & driver CD into your CD-ROM, choose your language and click **Next** to continue.



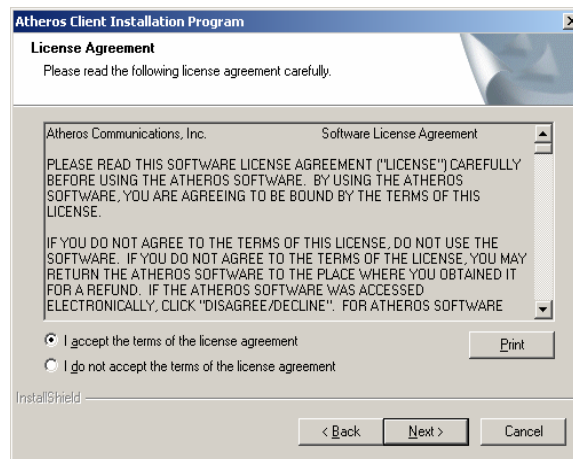
Step 2 :

Click **Next** to continue.



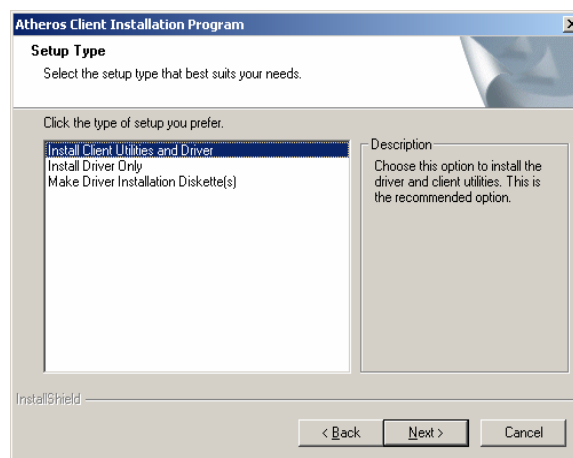
Step 3 :

Choose accept and click **Next** to continue.



Step 4 :

Choose the installation type. To install the client utilities and driver, select the appropriate button and click **Next**.



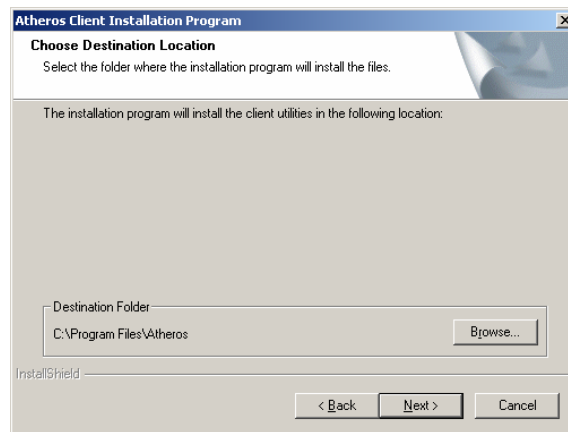
Step 5 :

Insert WLAN USB adapter into USB port and click OK to continue.



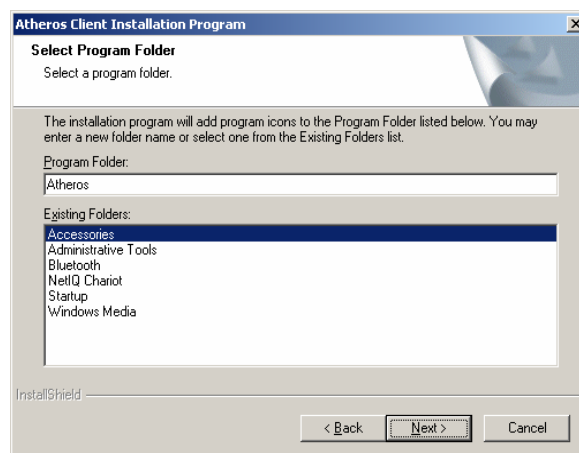
Step 6 :

Click **Next** to install at the designated folder. Or, click "Browse" to select different folder.



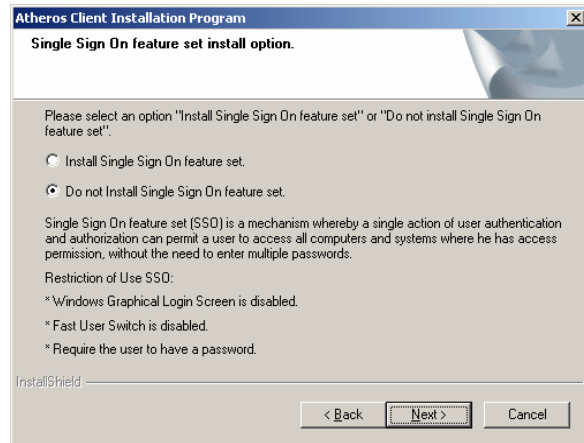
Step 7 :

Click **Next** to continue.



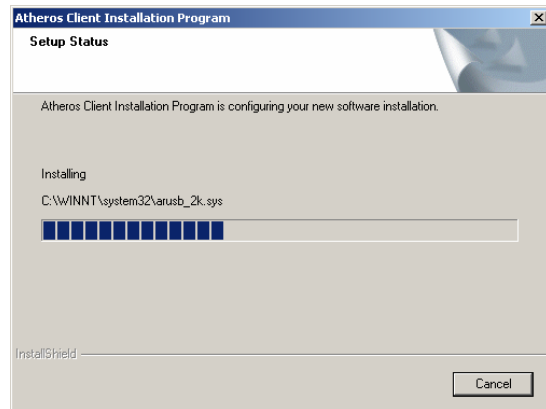
Step 8 :

If you have multiple computers to access, choose SSO(Single sign on) feature set. Or you can choose “Do not install SSO feature set” and Click **Next** to continue.



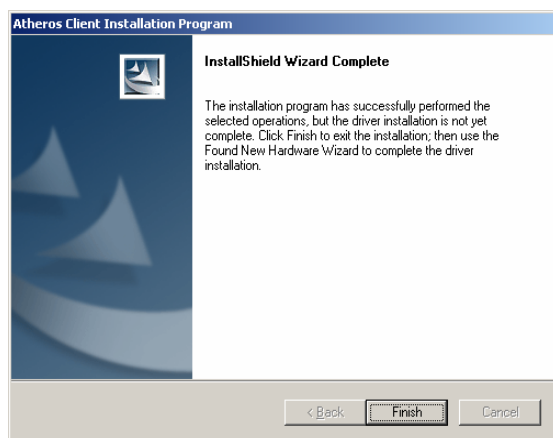
Step 9 :

Start copying files until it finishes the installation.



Step 10 :

Click **Finish** to complete installation.



3

INSTALL VISTA DRIVER

3.1

The installation driver CD will automatically activate the autorun installation program after you insert the disk into your CD drive. Please refer to page 1 "INSTALL DRIVER/UTILITY"

3.2

Install Manually :

Plug your USB dongle into USB interface, windows Vista will search for compatible driver to install.

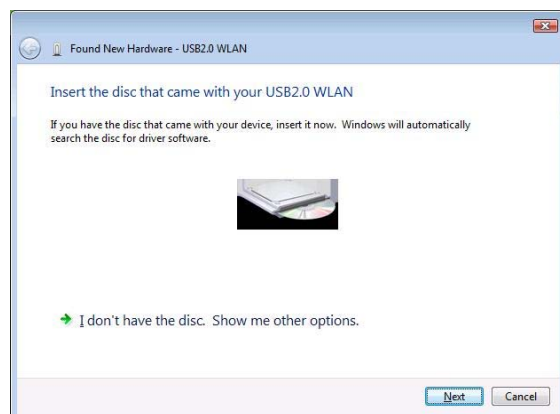
Step 1 :

Select "Locate and install the driver software", Windows will guide you through the process of installing driver software for your device.



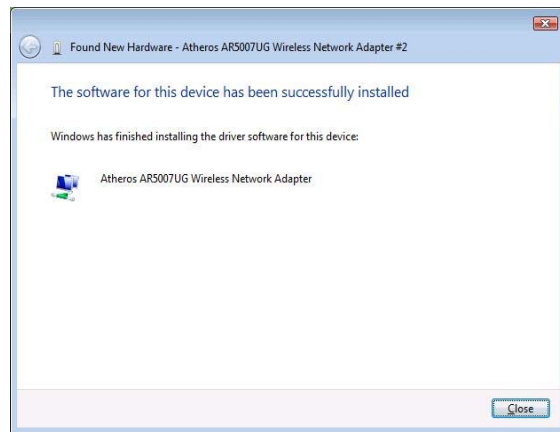
Step 2 :

Insert the installation disc into the CD-ROM and click "next" to continue installation.



Step 3 :

Windows Vista search for the software and it will be installed successfully.



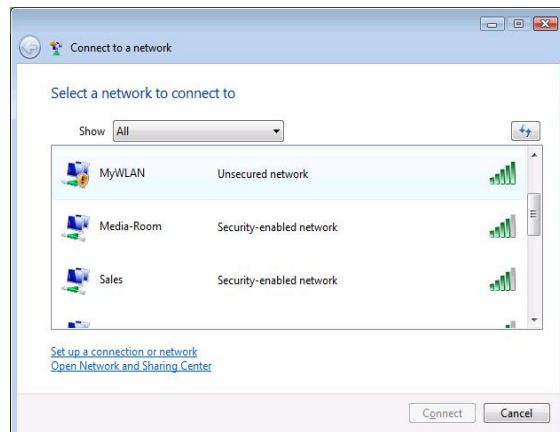
Step 4 :

After installation, right click the network icon on the Windows Vista System Tray, and click "Connect to a network".



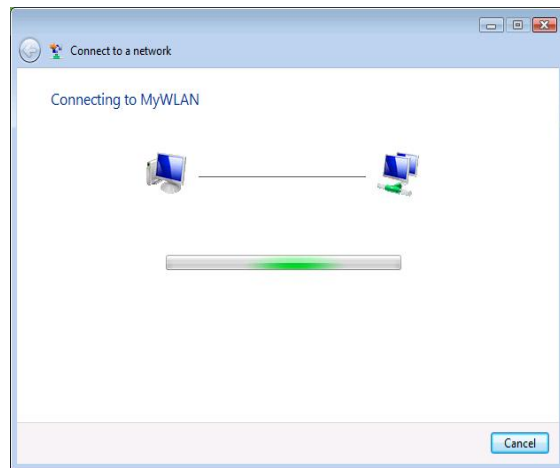
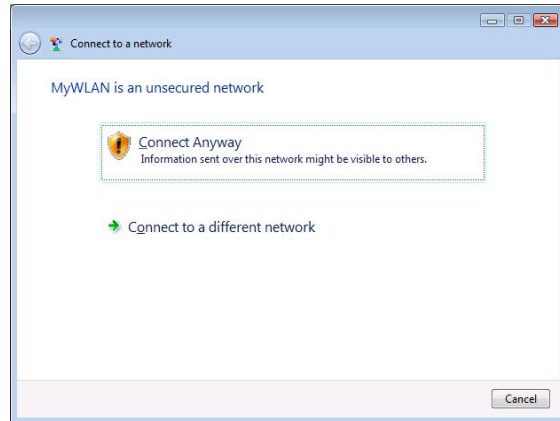
Step 5 :

Select a network to connect to and click "Connect".



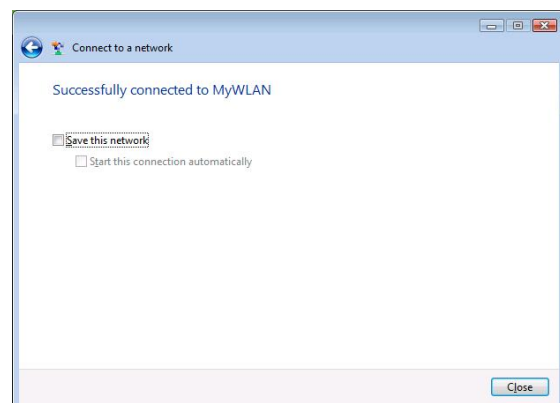
Step 6 :

Click "Connect Anyway" if the network is an unsecured network.



Step 7:

USB Dongle successfully connected to network, Click "Close"



FCC INFORMATION FOR THE CONSUMER

This equipment has been tested and found to comply with the limits for a Class B digital device, pursuant to part 15 of the FCC Rules. These limits are designed to provide reasonable protection against harmful interference in a residential installation. This equipment generates, uses, and can radiate radio frequency energy and, if not installed and used in accordance with the instructions, may cause harmful interference to radio communications. However, there is no guarantee that interference will not occur in a particular installation. If this equipment does cause harmful interference to radio or television reception, which can be determined by turning the equipment off and on, the user is encouraged to try to correct the interference by one or more of the following measures:

- Reorient or relocate the receiving antenna.
- Increase the separation between the equipment and receiver.
- Connect the equipment into an outlet on a circuit different from that to which the receiver is connected.
- Consult the dealer or an experienced radio/TV technician for help.

This device complies with Part 15 of the FCC Rules. Operation is subject to the following two conditions: (1) This device may not cause harmful interference, and (2) this device must accept any interference received, including interference that may cause undesired operation.

NOTE: Changes or modifications not expressly approved by the party responsible for compliance could void the user's authority to operate the equipment.

FCC RF Radiation Exposure Statement:

1. This Transmitter must not be co-located or operating in conjunction with any other antenna or transmitter.
2. This equipment complies with FCC RF radiation exposure limits set forth for an uncontrolled environment. The Maximum Output power is 13.47dBm(22.25mW).