



VMG3625-T20A

Dual-Band Wireless AC/N Combo WAN Gigabit Gateway with USB

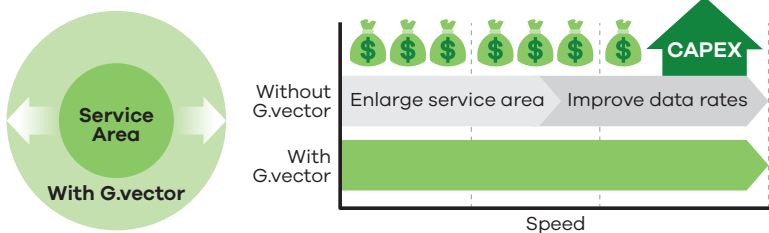
The Zyxel VMG3625-T20A Dual-Band Wireless AC/N Combo WAN Gigabit Gateway with USB is an advanced VDSL2 gateway that provides autosensing between VDSL2 and ADSL2+ for high-speed Internet access. In addition, with supports to G.vectoring, it increases speed and coverage to compete with other broadband technologies without infrastructural change.

The Zyxel VMG3625-T20A integrates an IEEE 802.11 a/b/g/n/ac access point and a Gigabit Ethernet switch for LAN access. With extreme routing performance, it acts as a concentrator or a power hub to distribute all contents among different devices inside the LAN with both wireless and wired connectivity. The Wi-Fi functionality has also been enhanced to ensure high-quality user experience.

Additionally, it comes with the multiple-WAN function suitable for future FTTH deployments with optimized CAPEX. Users can also leverage the USB interface on Zyxel VMG3625-T20A for file sharing or pair it with a 3G USB dongle for mobile connectivity.

Benefits

G.vectoring optimizes performance and CAPEX



Datasheet [VMG3625-T20A](#)



VDSL2 G.vectoring for maximized service coverage



Combo WAN-in-a-box for optimized CAPEX in FTTH/VDSL2 deployments



Dual-band wireless technology for superior performance and coverage



Advanced QoS to ensure quality of triple-play services



Remote provisioning and management through TR-069/TR-181 issue-2



ROM-D feature for easy distributor/operator customization

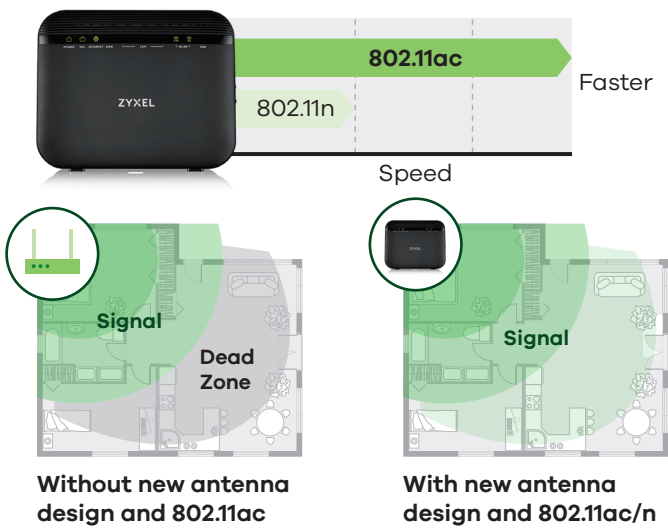


Easy upgrade to 3G USB support through configuration files

The Zyxel VMG3625-T20A Dual-Band Wireless AC/N Combo WAN Gigabit Gateway with USB supports vectoring technology that eliminates crosstalk or interference among different VDSL lines. The vectoring mechanism significantly increases bit rates to compete with cable/fiber

Latest 802.11ac technology for extreme performance and coverage

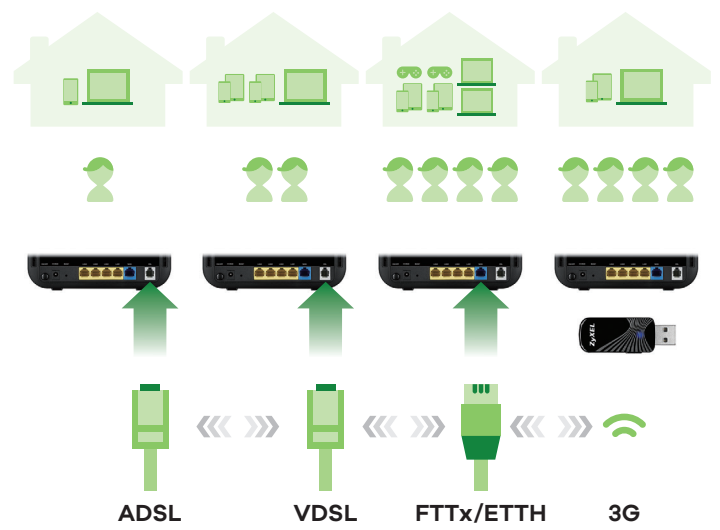
The Zyxel VMG3625-T20A provides high-throughput data rates of up to 866 Mbps* – twice the speed of 802.11n technology at the 5 GHz band. In addition, with the new antenna design and layout, the VMG3625-T20A eliminates dead zones and delivers high-quality full-HD video to multiple devices with IEEE 802.11 a/b/g/n/ac Wi-Fi certification throughout the house.



technology as well as to enhance service reach without changing the current infrastructure – a significant cost-saving advantage over FTTH deployments, while CAPEX can be optimized by the improved data rates and coverage without upgrading the equipment as well.

Combo WAN for simplified ISP logistics and optimized CAPEX

When customers migrating from ADSL2+ or VDSL2 to PON or LTE, service providers are not required to invest on new CPE and deploy them on customer sites. All they have to do is keeping the Zyxel VMG3625-T20A and replace the DSL line with a cable connected to Ethernet WAN port as the existing VMG3625-T20A terminates IP connections via the WAN interface. In most cases, end-users can still enjoy the same, or even better, experience from the original configuration without replacing it – thanks to the difference between physical connections.

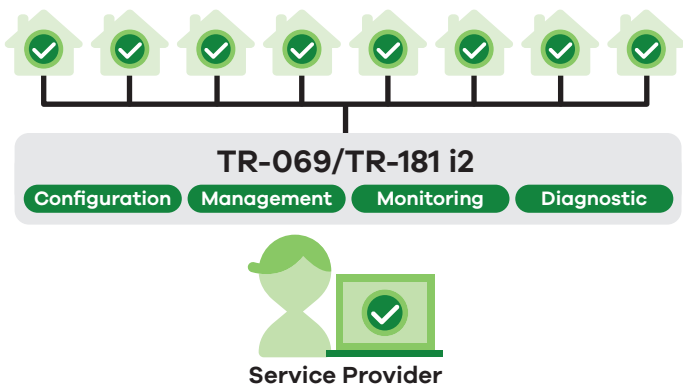


TR-069/TR-181 issue-2 remote management

With the TR-069/TR-181 standard management specifications, the Zyxel VMG3625-T20A allows service providers to manage and configure client devices remotely without interfering end users. This unique feature not only offers true “plug-and-play” experience but also reduces deployment complexity; it also saves operating and maintenance costs for service providers.

Quality of Service support

With Quality of Service (QoS) features, service providers can freely design their QoS policies and prioritize mission-critical services such as IPTV and VoIP base on their service plan offerings. This increases network efficiency and productivity that enable service providers to offer a real multi-play solution meeting residential user needs.



Specifications

System Specifications

Wireless Standard

- 802.11 b/g/n 2.4 GHz
- 802.11 a/n/ac 5 GHz

VDSL Compliance

- ITU-T G.993.2 VDSL2, band plan 997, 998 over POTS
- VDSL profiles (8a/b/c/d, 12a/b, 17a, 30a)
- ITU-T G.993.5 (G.vector)
- ITU-T G.998.4 (G.inp): up to 16 symbols
- SRA (Seamless Rate adaptation)
- UPBO (Upstream Power Back-off)
- PhyR (Physical Layer Retransmission)
- TR-114

ADSL Compliance

- ITU-T G.992.1 (G.dmt) Annex A
- ITU-T G.992.2 (G.lite) Annex A
- ANSI T1.413
- ITU-T G.992.3 ADSL2
- ITU-T G.992.5 ADSL2+
- ITU-T G.998.4 (G.inp)
- Reach-Extended ADSL (RE ADSL)
- SRA (Seamless Rate Adaption)
- PhyR (Physical Layer Retransmission)
- TR-067/100

WLAN

- 802.11ac 5 GHz with 866 Mbps data rate
- 802.11n 2.4 GHz with 300 Mbps data rate
- WPA/WPA2, WPA-PSK/WPA2-PSK
- WEP data encryption 64/128 bit
- Wireless Protected Setup (WPS)
- Multi SSID (up to 4) and hidden SSID support

USB

- File sharing
- 3G dongle

Bridge/Router

- PPPoE (RFC2516)
- PPPoA (RFC2364)
- DHCP client/server/relay
- DNS proxy/static DNS/DNS from ISP
- NAT/NAPT
- IGMP v1, v2, v3
- IEEE 802.1d transparent bridge
- Static route/policy routing
- IP protocol (IPv4/IPv6)

VLAN/QoS

- VLAN active (Enable/Disable)/802.1p (0-7)/802.1q (1-4094)

- Support flexible traffic classification
- TCP/UDP port range
- Ether type (NA/IP/ARP/PPPoE discovery/PPPoE session/802.1Q/IPv6)
- Source & Destination Address/Subnet Mask/Port Range/MAC/MAC Mask
- Predefine service
- IP Protocol (TCP/UDP/ICMP/IGMP/User defined)
- DHCP OPT (60/61/77/125)
- Packet length
- 6-bit DiffServ code point (DSCP, RFC 2474)
- TCP ACK

Firewall & Security

- MAC filter
- Scheduler rule
- IPv4/IPv6 Firewall (Stateful Packet Inspection)
- Parental control
- ACL rule support: (32 ACL rules)
- DoS protection

Management

- Web/HTTP: 3 level log-in
- Login privilege
- CLI (Command Line Interpreter) via SSH or Telnet
- Firmware upgrade via Web/TFTP/FTP/TR069 RPC method
- Text based configuration (XML based)
- Configuration backup/update/restore default via Web
- Configurable access control for remote management (Interface and/port number)
- Trust domain
- DSL forum TR-069, TR-098, TR-181 issue-2, TR-064, TR-111
- SNMP v1, v2
- Rom-D support
- TR-069 serial number parameter MUST be device serial number in back label

Hardware Specifications

- WAN:
 - One RJ-11 interface for VDSL/ADSL2 (over POTS)
 - One RJ-45 connector for Giga-Ethernet WAN port
- LAN: 4 auto-sensing 10/100/1000 Mbps Ethernet LAN ports
- Wireless: Two internal antennas

- USB: One 2.0 host
- LED indicator: Power, DSL, Internet, WAN, LAN, WLAN, USB
- Button:
 - Power On/Off button
 - WLAN/WPS button
 - WLAN on/off and WPS is one set
 - Reset/Restore button
 - One real button for restore factory default settings
- Power consumption: 24 Watt max

Physical Specifications

- Item dimensions (WxDxH): 180 x 145 x 29.8 mm (7.08" x 5.7" x 1.17")
- Item weight: 274 g (0.60 lb.)
- Packing dimensions (WxDxH): 354 x 194 x 38 mm (13.93" x 7.63" x 1.49")
- Packing weight: 712 g (1.57 lb.)

Environmental Specifications

Operating Environment

- Temperature: 0°C to 40°C (32°F to 104°F)
- Humidity: 10% to 90% (Non-condensing)

Storage Environment

- Temperature: -30°C to 70°C (-22°F to 158°F)
- Humidity: 10% to 95% (Non-condensing)

Certification

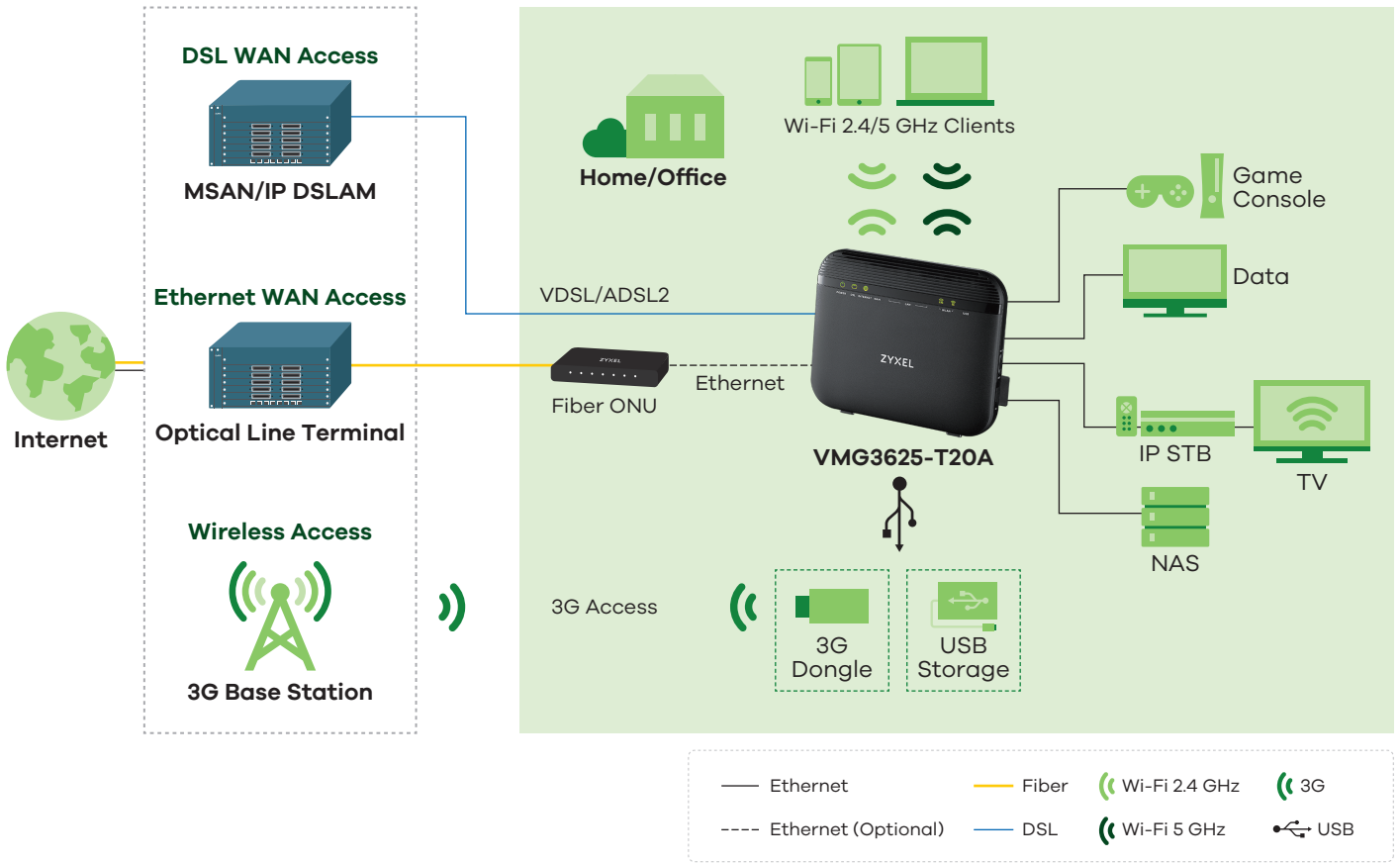
- Safety: CE-LVD
- EMC: CE

Package Contents

- Wireless router
- Power adapter
- Ethernet cable
- RJ-11 cable
- Quick start guide
- Safety warning card

* The maximum wireless data transfer rate is derived from IEEE Standard 802.11 specifications. Actual data transfer rate will vary from network environment including: distance, network traffic, building site materials/construction, interference from other wireless devices, and other adverse conditions.

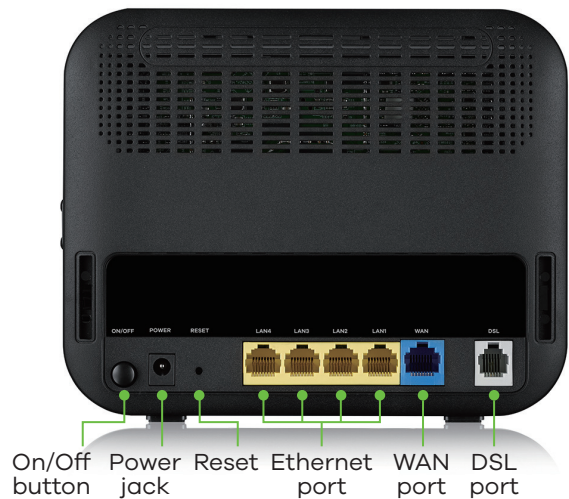
Application Diagram



Front Panel



Rear Panel



For more product information, visit us on the web at www.zyxel.com

Copyright © 2017 Zyxel Communications Corp. All rights reserved. Zyxel, Zyxel logo are registered trademarks of Zyxel Communications Corp. All other brands, product names, or trademarks mentioned are the property of their respective owners. All specifications are subject to change without notice.

Datasheet [VMG3625-T20A](#)



5-100-01317008 06/17