

300Mbps 802.11n Wall Plug Universal WiFi Repeater / Travel Router



Ideal High Speed Wireless Range Extender with Flexible Wall-Plug Design

To minimize the effort of wireless network deployment, PLANET provides an ideal Wireless Range Extension solution – the WNAP-1260 Wall Plug Universal Wi-Fi Repeater. With the compact-sized and wall plug design, the WNAP-1260 is easy to plug into any electrical outlets of any place for 300Mbps high speed wireless network sharing. It can operate in various environments by the hardware switch modes including AP, Repeater, and Client, which help users to immediately set up a wireless network without software configuration. The wall plug design and operation flexibility make the WNAP-1260 suitable for wireless LAN range extension.



Industrial Compliant Wireless LAN & LAN

- 300Mbps wireless transmission rate with MIMO technology
- IEEE 802.11n, 802.11b/g standard compliant
- Equipped with 10/100Mbps RJ-45 Ports for LAN/WAN, Auto MDI/ MDI-X supported

Fixed-network Broadband Router

- Supported connection types: Dynamic IP / Static IP / PPPoE / PPTP / L2TP
- Supports Static Routing, IGMP Proxy
- Supports multiple sessions SIP ALG, IPSec, L2TP and PPTP VPN pass-through
- Supports DMZ, Port Forwarding and Port Triggering for various networking applications
- Supports DHCP Server, UPnP, Planet Dynamic DNS

Wireless Network Range Extender

- Multiple Wireless Modes: AP, WDS, Repeater, Universal Repeater, Client
- Supports Multiple SSID to allow users to access different networks through a single AP
- Supports WMM (Wi-Fi Multimedia), Wireless QoS
- Supports IAPP (Inter Access Point Protocol), Wireless Roaming

Secure Network Connection

- Advanced security: 64/128-bit WEP, WPA / WPA2, WPA-PSK / WPA2-PSK (TKIP/AES)
- Built-in NAT firewall features, with SPI function to protect against DoS attacks
- Supports IP / MAC / URL / DNS Filtering

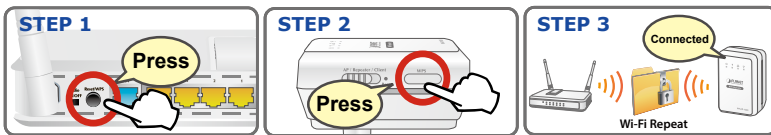
Multiple Wireless Network Technologies for Greater Access

The WNAP-1260 features 802.11n radio with 2T2R antenna technology compliant with 802.11b/g/n standards. With the 300Mbps high speed transmission rates, the WNAP-1260 is easy to integrate the wireless devices with existing wired network. Compared with general wireless routers, the WNAP-1260 offers more powerful and flexible capability for home and business demands to access Internet and range extension of wireless network.

One-touch Secure Wi-Fi Extension

In order to simplify security settings for home and SOHO network, the WNAP-1260 supports Wi-Fi Protected Setup (WPS) with configuration in PBC and PIN type. Just push the WPS button or key in the PIN code and the secure connection between the WNAP-1260 and the access point can be built immediately, which offers users a convenient and fast method to extend a secure wireless network.

WPS (Wi-Fi Protected Setup)-Reapter Mode
Quick & Easy Wireless Connection



Easy Installation & Management

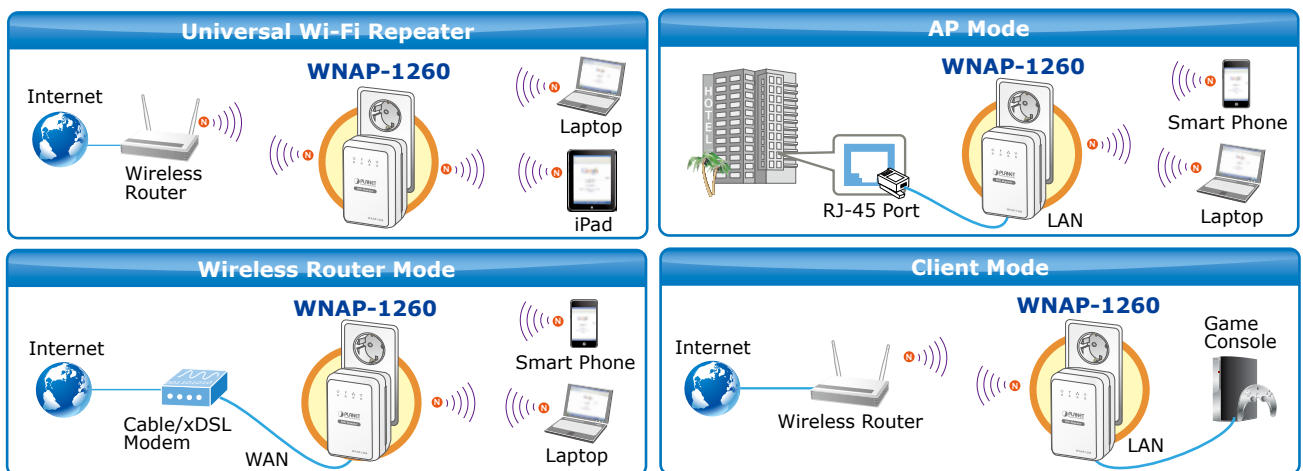
- Web-based UI and Quick Setup Wizard for easy configuration
- Remote Management allows configuration from a remote site
- System status monitoring includes DHCP Client, System Log

Flexible Usage & Compact Design

- Hardware switchable operation modes: AP / Repeater / Client
- Easily extends secure wireless network by One-touch Wi-Fi Protected Setup (WPS)
- Quickly repeat Wi-Fi signal to anywhere through its Stylish Wall-Plug Design

More Flexibility and Mobility

With the tiny-sized and wall plug design, the WNAP-1260 is easy to plug into wall outlet for wireless access in any place. It can operate in various environments with the hardware switch modes including AP, Repeater and Client, which helps to immediately set up a wireless network without software configuration. The wall plug design and operation flexibility make the WNAP-1260 suitable for range extension.



Wide Range of Wireless Security Support

To secure the wireless communication, the WNAP-1260 supports most up-to-date encryptions including WPA / WPA2-PSK with TKIP/AES. Made to fulfill enterprise and various applications demand, the WNAP-1260 enhances security and management features such as multiple SSID support. It can create up to 5 virtual standalone APs with 5 different SSIDs according to individual security levels and encryption scheme of various wireless devices.

Internet Broadband Sharing

The WNAP-1260 provides home and SOHO users a reliable and cost effective wireless solution by featuring WAN Internet access and high speed IEEE 802.11n wireless transmission. The WNAP-1260 is equipped with one LAN/WAN port for connection to local network or for wired cable / xDSL service connection. It provides a more flexible and easier way for users to share an instant wireless network service via range extension wherever at home, hotspot, or in public places like transportation, outdoor events, and more.

Advanced Firewall Security

In the router mode, the WNAP-1260 supports NAT functions allowing multiple users to access Internet via only one single legal IP. It provides Port Forwarding and DMZ for LAN PC to act as an application server. Furthermore, the advanced firewall by the WNAP-1260 can protect your Intranet clients from unauthorized accesses and various DoS attacks from the Internet. In aspect of the firewall, the WNAP-1260 provides IP / MAC / Port / URL filtering to prevent possible hackers attack.

Easy Setup Anywhere with Wall-Plug Design

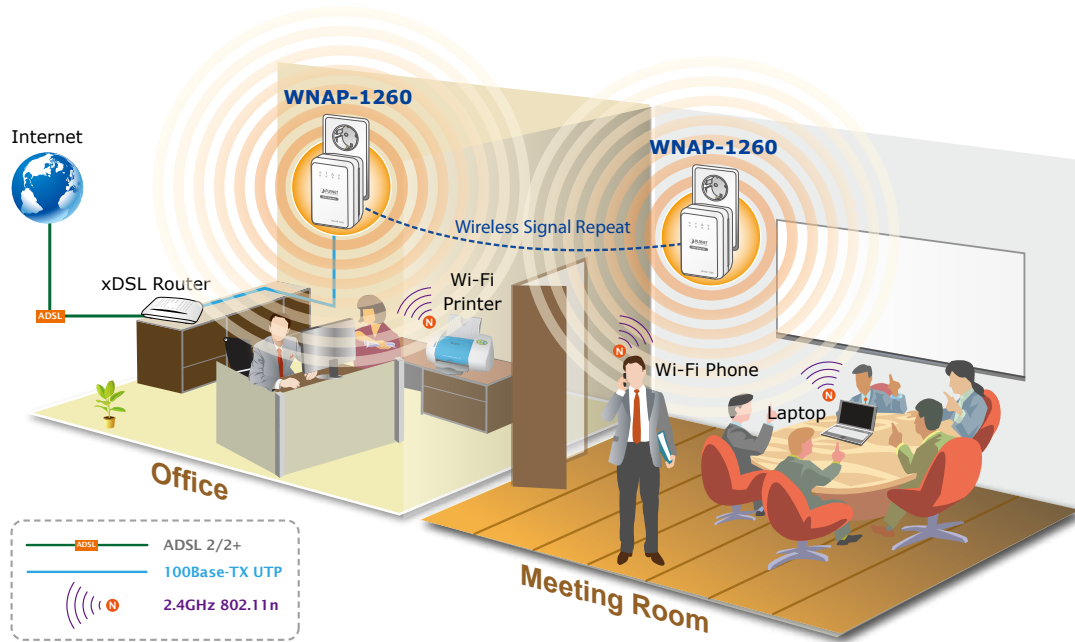
With built-in small power-supply brick with integral male plug, the WNAP-1260 can be plugged directly into a wall outlet. Thus it can plug into any electrical outlets to repeat the existing poor Wi-Fi signal by just pressing its WPS button. Besides, users also can easily apply any operating modes by switching the Hardware Mode Switch. With the universal design and compatible with any brands of router or access point, the WNAP-1260 provides the easiest way to eliminate wireless dead spots in office or home wireless network .



Applications

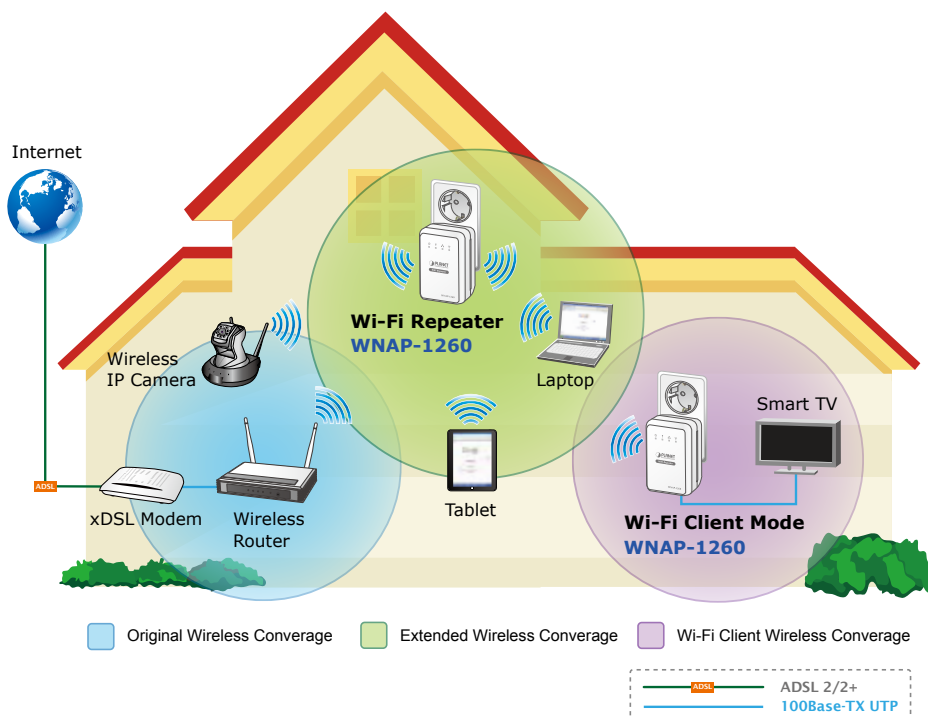
High Speed and Secure Wireless LAN Connection

The WNAP-1260 is an ideal solution to providing 300Mbps high speed wireless networking to all residential and office users. Locate the WNAP-1260 at the central point in an office or home, and connect it to an xDSL / cable modem, and then the WNAP-1260 can provide high speed wireless Internet access for the office or home network. Furthermore, the WPA-PSK / WPA2-AES mechanism of the WNAP-1260 can effectively prevent the information from eavesdropping by unauthorized users. For secure enterprise applications, the WNAP-1260 also provides up to 5 SSIDs allowing users to access different networks through a single AP.



Home Wireless Range Extender

The WNAP-1260 is the characterization of Wall-Plug design and advanced 2T2R MIMO technology which reduces the effect of dead spot, so that it can get better coverage of the existing wireless network. The WDS and repeater modes supported by the WNAP-1260 help to minimize the effort of installation and cabling cost.



Product Specifications

Product	WNAP-1260 300Mbps 802.11n Wall Plug Universal WiFi Repeater	
Hardware Specifications		
Interface	LAN/WAN	1 x 10/100Mbps Auto MDI/MDI-X RJ45 port
Antenna	Gain	2 x Internal 2dBi Antenna
	Orientation	Horizontal and Vertical
Button/Switch	<ul style="list-style-type: none"> ▪ Mode Selection Switch (AP / Repeater / Client) ▪ WPS Button ▪ Reset button *Push about 3~6 seconds to reset to factory default settings	
LED Indicators	PWR, WPS, Ethernet, WLAN	
Material	Plastic	
Dimensions (W x D x H)	55 x 75 x 40 mm	
Weight	80g (gross weight)	
Power Requirements	100~240VAC	
Plug Type	EU/US	
Power Consumption	On-state: 2.1W Low power state: 1.5W	
Wireless Interface Specifications		
Standard	Compliant with IEEE 802.11b/g/n	
Frequency Band	2.4~2.4835GHz	
Extend Frequency	DSSS	
Modulation Type	DBPSK, DQPSK, QPSK, CCK and OFDM (BPSK / QPSK / 16-QAM / 64-QAM)	
Data Transmission Rates	802.11n (40MHz) : 270/243/216/162/108/81/54/27Mbps 135/121.5/108/81/54/40.5/27/13.5Mbps (Dynamic)	
	802.11n (20MHz) : 130/117/104/78/52/39/26/13Mbps 65/58.5/52/39/26/19.5/13/6.5Mbps (Dynamic)	
	802.11g : 54/48/36/24/18/12/9/6Mbps (Dynamic)	
	802.11b : 11/5.5/2/1Mbps (Dynamic)	
Transmission Distance	Indoor up to 100m Outdoor up to 300m (Depends on the environment)	
Channel	America / FCC: 2.412~2.462GHz (11 Channels) Europe / ETSI: 2.412~2.472GHz (13 Channels) Japan / TELEC: 2.412~2.484GHz (14 Channels)	
Channel Width	20 / 40MHz	
Max. RF Power	802.11b: 17±1.5dBm 802.11g: 14±1.5dBm 802.11n (20MHz): 14±1.5dBm 802.11n (40MHz): 14±1.5dBm	
Receive Sensitivity	802.11b: -92dBm @ 1Mbps; -85dBm @ 11Mbps, PER < 8% 802.11g: -88dBm @ 6Mbps; -73dBm @ 54Mbps, PER < 10% 802.11n: -90dBm @ MCS8; -70dBm @ MCS15, PER < 10%	
Software Features		
Operation Mode	<ul style="list-style-type: none"> ▪ AP/Router ▪ Repeater ▪ Client (Switchable by Hardware)	
Wireless Mode	<ul style="list-style-type: none"> ▪ Universal Repeater (AP+Client) ▪ Repeater (WDS+AP) ▪ AP (Access Point) 	<ul style="list-style-type: none"> ▪ WDS PTP (Point to Point) ▪ WDS PTMP (Point to Multipoint) ▪ Client
Encryption Security	<ul style="list-style-type: none"> ▪ WEP (64/128-bit) encryption security ▪ WPA / WPA2 (TKIP/AES) ▪ WPA-PSK / WPA2-PSK (TKIP/AES) 	
Wireless Security	Provides wireless LAN ACL (Access Control List) filtering Wireless MAC address filtering up to 16 entries Supports WPS (Wi-Fi Protected Setup) Enable/Disable SSID Broadcast	
Wireless Advanced	WMM (Wi-Fi Multimedia): 802.11e Wireless QoS Multiple SSID: up to 4 Wireless Isolation: Supports Wireless Isolation IAPP (Inter Access Point Protocol): 802.11f Wireless Roaming Provides Wireless Statistics	

Max. Clients	Wire: 253 Wireless: 32
Internet Connection Type	Shares data and Internet access for users, supporting the following internet access: <ul style="list-style-type: none"> Dynamic IP Static IP PPPoE PPTP L2TP
Firewall	NAT firewall with SPI (Stateful Packet Inspection) Built-in NAT server supporting Port Forwarding, Port Triggering, and DMZ Built-in firewall with IP address / MAC address / Port / URL filtering Supports ICMP-FLOOD, UDP-FLOOD, TCP-SYN-FLOOD filter, DoS protection
Routing Protocol	Static Routing
VPN Pass-through	SIP ALG, PPTP, L2TP, IPSec
LAN	Built-in DHCP server supporting static IP address distributing Supports UPnP, Dynamic DNS Supports IGMP Proxy
System Management	Web-based (HTTP) management interface SNTP time synchronize Easy firmware upgrade
Standards Conformance	
IEEE Standards	IEEE 802.11n (2T2R, up to 300Mbps) IEEE 802.11g IEEE 802.11b IEEE 802.11i IEEE 802.3 10Base-T IEEE 802.3u 100Base-TX IEEE 802.3x Flow Control
Others Protocols and Standards	CSMA/CA, CSMA/CD, TCP/IP, DHCP, ICMP, NAT, PPPoE, SNTP
Environment & Certification	
Temperature	Operating: 0 ~ 45 degrees C Storage: -20 ~ 70 degrees C
Humidity	Operating: 10 ~ 90% (non-condensing) Storage: 5 ~ 90% (non-condensing)
Regulatory	CE, RoHS

Ordering Information

WNAP-1260-EU	300Mbps 802.11n Wall Plug Universal WiFi Repeater (EU-Type)
WNAP-1260-US	300Mbps 802.11n Wall Plug Universal WiFi Repeater (US-Type)

Related Products

WNRT-617	150Mbps 802.11n Wireless Broadband Router
WNRT-627	300Mbps 802.11n Wireless Broadband Router
WNRT-617G	150Mbps 802.11n Wireless 3G Router
WDRT-750AC	750Mbps 802.11ac Wireless Broadband Router
WNAP-1110	150Mbps 802.11n Wireless Range Extender
WNAP-1120PE	300Mbps 802.11n Wireless PoE Access Point
WDL-U700	300Mbps Dual Band 802.11n Wireless USB Adapter
WNL-U556M	802.11n Micro Wireless USB 2.0 Adapter
WNL-U554A	802.11n Wireless USB 2.0 Adapter External 2dBi Antenna
WNL-U555HA	802.11n Wireless High Power USB Adapter
WNL-9501	802.11n Wireless PCI Express Adapter

* For best performance and wireless connection, sincerely advice to match the above related products.

PLANET Technology Corporation

11F., No.96, Minquan Rd., Xindian Dist., New Taipei City
231, Taiwan (R.O.C.)
Tel: 886-2-2219-9518 Fax: 886-2-2219-9528
Email: sales@planet.com.tw www.planet.com.tw



PLANET reserves the right to change specifications without prior notice. All brand names and trademarks are property of their respective owners. Copyright © 2014 PLANET Technology Corp. All rights reserved.

C-WNAP-1260