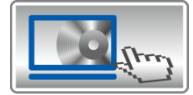




Dual-Band



Easy Setup Wizard,  
Built-In ISP Selector



ADSL Splitter Inside



Lightning Protected

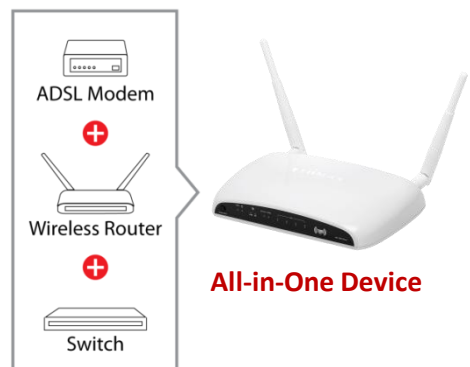
**AR-7667WnA**

## N600 Wireless Dual-Band Gigabit ADSL2/2+ Modem Router

Edimax's N600 Wireless Dual-Band Gigabit ADSL2/2+ Modem Router is an incredibly robust all-in-one device combining the crystal clear 5GHz band and the traditional 2.4GHz band. With 600Mbps of total bandwidth, simple tasks like sending e-mails can be handled by the 2.4GHz band while bandwidth intensive tasks like online gaming or HD video streaming can be processed by the 5GHz band – all at the same time. Its all gigabit ports allow users to access high-speed internet connections and share them wirelessly at blazing 300Mbps wireless speeds or by using one of its 4 gigabit LAN ports.

### All-in-One Device

The AR-7667WnA/B is a wireless N dual band router with a built-in ADSL2/ADSL2+ modem combining a Gigabit switch into a single device. Save desk space, the hassle of extra cords & cables and the cost of leasing a router from your DSL service provider or purchasing multiple devices to access and share high-speed internet connections.



### Simultaneous Dual Band

Enjoy better performance and greater flexibility for your Wi-Fi devices, using dual-band connectivity. The AR-7667WnA provides connectivity for the 2.4GHz band at speeds of 300Mbps and 5GHz band at speeds of 300Mbps simultaneously. You can surf the internet and check your email on the 2.4GHz band, and select the 5GHz band for online gaming and video streaming.

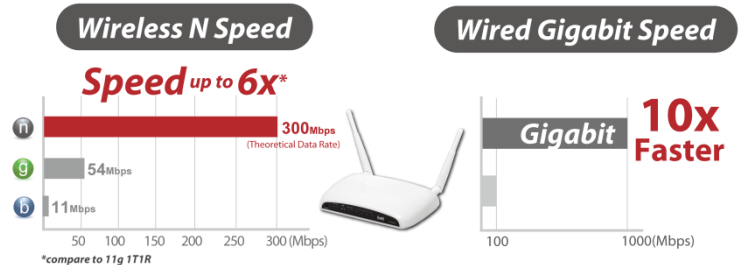


# N600 Wireless Dual-Band Gigabit ADSL2/2+ Modem Router

AR-7667WnA

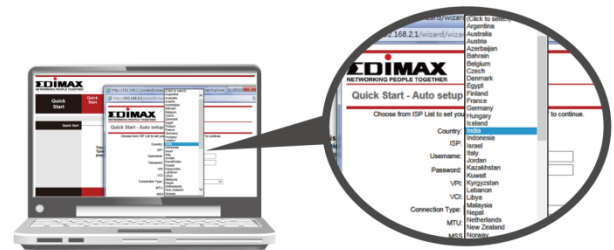
## High-Speed Connectivity - Wireless N and Gigabit Ports

With high-speed 300Mbps 802.11n wireless and 4 super-fast gigabit Ethernet ports, the AR-7667WnA is the ideal choice for users that need speedy, reliable connections for bandwidth entertainment or intensive work such as HD video streaming, online gaming or lag-free internet calls with the fastest possible wireless and wired transfer speeds.



## Easy Setup Wizard with Built-in ISP Selector

Setup the ADSL modem router using the unique and convenient multi-language setup wizard provided on the included CD-ROM or available through a web browser. Select your language and follow a few simple steps to setup the router and configure the Internet connection, password, SSID and wireless security. Additionally, the setup wizard includes a built-in ISP selector to configure your ISP settings automatically.



Easy setup wizard with built-in ISP Selector

## Lightning Protection

Protected from lightning strikes to help your device avoid the damage of a tough thunderstorm.



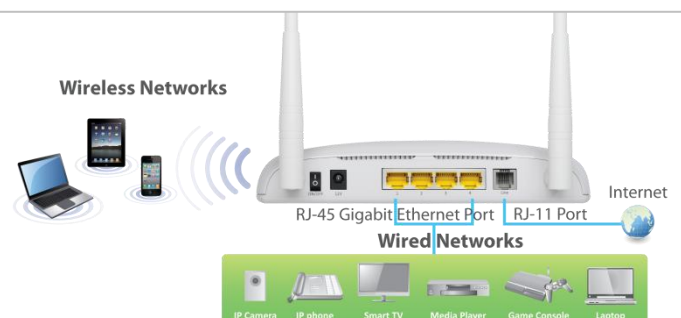
## Wi-Fi Protected Setup (WPS)

Wi-Fi Protected Setup is a quick and convenient method of establishing wireless connections between compatible devices. Set up a wireless network in less than a minute with just a couple of clicks of a button or easily add new Wi-Fi devices to an existing network.



## Built-in ADSL2/2+ Modem and IP Sharing

Share any ADSL, ADSL2 or ADSL2+ Internet connection to both wired and wireless network clients, with downstream speeds up to 24Mbps and upstream speeds up to 1Mbps.



# N600 Wireless Dual-Band Gigabit ADSL2/2+ Modem Router

AR-7667WnA

## FEATURES

- All-in-One Device: ADSL2+ Modem, 4-Gigabit-Port Switch and Wireless N Access Point
- Simultaneous 2.4GHz 300Mbps and 5GHz 300Mbps connections for 600Mbps of total available bandwidth
- Security: WEP 64 & 128 bits, WPA-TKIP, WPA-AES, WPA2, WPA-Radius
- Quality of Service (QoS)
- Universal Plug & Play (UPnP)
- Application Layer Gateway (ALG)
- Built-in ISP selector
- Pre-set wireless security with individual WPA2 password

## TECHNICAL SPECIFICATIONS

HARDWARE INTERFACE	MANAGEMENT	OUTPUT POWER
<ul style="list-style-type: none"> <li>•1 x RJ-11 WAN-port</li> <li>•4 x RJ-45 Fast Ethernet LAN ports</li> <li>•1 x Reset button for factory default settings</li> <li>•1 x WPS button</li> <li>•2 x 3dBi antenna</li> <li>•LED indicators: power, ADSL, LAN 1-4, WLAN, WPS</li> </ul>	<ul style="list-style-type: none"> <li>•Web based configuration</li> <li>•Web page/XMODEM/FTP/TFTP firmware upgrade</li> <li>•Command-line interface via serial port, telnet or SSH</li> <li>•Universal Plug and Play (UPnP)</li> <li>•Date/time update from SNTP time server</li> </ul>	<ul style="list-style-type: none"> <li>•11n: 14±1.5dBm,</li> <li>•11g: 15±1.5dBm</li> <li>•11b: 16±1.5dBm</li> <li>•11a: 12±1.5dBm</li> </ul>
ADSL FEATURES	WIRELESS FEATURES	ROUTING FEATURES
<ul style="list-style-type: none"> <li>•Annex A, B,I, J, L &amp; M</li> <li>•ANSI T1.413i2</li> <li>•ITU G.992.1 (G.dmt), ITU G.992.2 (G.lite)</li> <li>•ITU G.992.3 ADSL2 (G.dmt.bis), ITU G.992.4 (G.lite.bis)</li> <li>•ITU G.992.5 (G.dmt.bisplus), ITU G.994.1 (G.hs)</li> <li>•ITU G.995.1, ITU G.996.1, ITU G.997.1</li> <li>•Power saving mode, L3 to L0 initialization</li> <li>•Supports multiple PVCs</li> <li>•Supports traffic shaping (ATM QoS) UBR, CBR, VBR-rt, VBR-nrt</li> <li>•Supports OAM F4/F5 loop-back, AIS, and RDI OAM cells</li> <li>•UNI 3.1/4.0 permanent virtual circuits</li> </ul>	<ul style="list-style-type: none"> <li>•Compatible with IEEE802.11 a, IEEE 802.11b,IEEE 802.11g and IEEE 802.11n</li> <li>•Supports auto channeling</li> <li>•Legacy and high throughput modes</li> <li>•20MHz/40MHz Bandwidth</li> <li>•Supports 64/128-bit WEP, 802.1x, WPA and WPA2 wireless security</li> <li>•Multiple BSSID support</li> </ul>	<ul style="list-style-type: none"> <li>•Routing (TCP/IP/UDP/ARP/ICMP)</li> <li>•802.1D MAC Bridge</li> <li>•RIP v1 (RFC1058), RIP v2 (RFC1723)</li> <li>•IGMP Snooping (V1/V2)</li> <li>•VLSM (RFC1878)</li> <li>•RFC 1877 PPP IPCP Extensions for Name Server Address</li> <li>•RFC 1877 PPP IPCP Extensions for Name Server Addresses (limited to DNS addresses unless the device supports NetBIOS)</li> <li>•RFC 0791 IP Fragmentation</li> <li>•IETF RFC 0919, IETF RFC 0922, IETF RFC 2644 IP Broadcast</li> </ul>
SECURITY	HUMIDITY & TEMPERATURE	POWER
<ul style="list-style-type: none"> <li>•Management access control for LAN/WAN sides</li> <li>•Prevent port scanning, denial-of-service (DOS) and LAND attacks</li> <li>•Stateful packet inspection (SPI)</li> <li>•IP spoofing, IP with zero length</li> <li>•IP/ MAC filtering, application filtering, URL filter</li> </ul>	<ul style="list-style-type: none"> <li>•Operating: 0 to 40°C</li> <li>•Storage: -40 to 70°C</li> <li>•Operating: 10 to 90% RH (Non-condensing)</li> <li>•Storage: 5 to 95% RH (Non-condensing)</li> </ul>	<ul style="list-style-type: none"> <li>•12V DC, 1A</li> </ul>
DIMENSION	WEIGHT	CERTIFICATIONS
<ul style="list-style-type: none"> <li>•196mm x 114mm x 36mm</li> </ul>	<ul style="list-style-type: none"> <li>•300g</li> </ul>	<ul style="list-style-type: none"> <li>•CE</li> </ul>

## HARDWARE INTERFACE & APPLICATION DIAGRAM

