

CT-6382T/CT-6382TE

ADSL2/2+ WLAN VoIP IAD



COMTREND

Leading the Communication Trend



Description

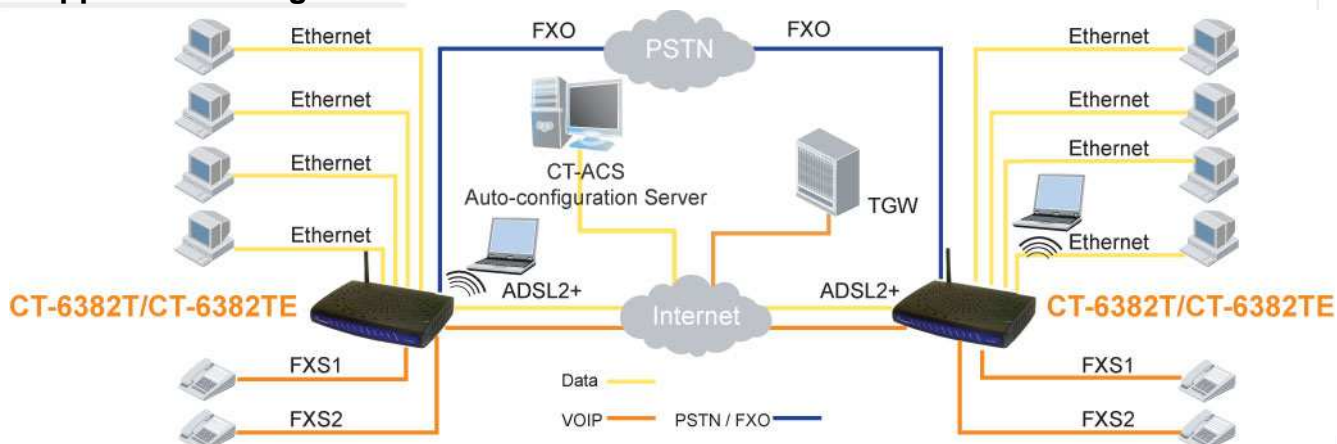
Comtrend's CT-6382T/CT-6382TE is a powerful WLAN VoIP IAD (Integrated Access Device), providing predictable, real-time, toll-quality voice over the Internet. Developed with ADSL2/2+ broadband technology over PSTN, the CT-6382T/CT-6382TE offers residential and business users easy access to the Internet via WLAN or Ethernet, also providing VoIP via standard analog telephones.

The CT-6382T/CT-6382TE allows calls to be routed to anywhere in the world – significantly reducing or eliminating long distance charges. You can even make phone calls when your PC is turned off. The CT-6382T/CT-6382TE supports policy based QoS on layer 3, which provides high quality voice service. It also provides a cost-effective solution to combine with all your network and telephony needs in one, which reduces space requirements and the cost of hardware and cabling. The CT-6382T/CT-6382TE is also designed with TR-068 compliant color panel and LED indicators making it more user friendly.

Features

- CT-6382T -- Annex A
- CT-6382TE -- Annex B
- ADSL2/2+ VoIP and Router integrated
- Integrated 802.11g AP(backward compatible with 802.11b)
- Supports life line: PSTN alive when power off
- Supports emergency call
- Supports QoS (Quality of Service) for voice
- Supports caller ID display and restriction
- Supports call hold
- Supports call waiting
- Supports call forwarding
- Supports call transfer
- Supports 3-way conference
- Supports direct number dialing
- Supports T.38
- Supports remote administration, automatic firmware upgrade and configuration
- Supports VPN Pass-through
- Supports Day-time parental control
- Supports TR-069/TR-098/TR-104/TR-111
- Supports TR-068

Applications Diagram



CT-6382T/CT-6382TE

ADSL2/2+ WLAN VoIP IAD



Specifications

Hardware Interface

FXSx2, FXOx1, RJ11x1 for ADSL2+, RJ-45 x4 for LAN, Reset Button x1, Power switch x1, USB host, (USB device)

WAN Interface

ADSL Standard
ITU-T G.992.5, ITU-T G.992.3, ITU-T G.992.1, ITU-T G.992.2, ANSI T1.413 Issue 2
G.992.3 (ADSL2) Downstream: Up to 12 Mbps Upstream: 1.3 Mbps
G.992.5 (ADSL2+) Downstream: Up to 24 Mbps Upstream: 1.3 Mbps
AnnexM

LAN Interface

Standard IEEE 802.3, IEEE 802.3u
10/100 BaseT Auto-sense
MDI/MDX support Yes

WLAN Interface

Standard IEEE802.11g, Backward compatible with 802.11b
Encryption 64, 128-bit Wired Equivalent Privacy (WEP) Data Encryption
Channels 11 Channels (US, Canada)/ 13 Channels (Europe)/ 14 Channels (Japan)
Data rate Up to 54Mbps
MAC address filtering, WEP, WPA, IEEE 802.1x
10, 25, 50, 100mW @ 22MHz channel bandwidth output power level can be selected according to the environment

ATM Attributes

RFC 2364, RFC 2684 (RFC 1483) Bridge; RFC 2684 (RFC 1483) Route; RFC 2516; RFC 1577
VCs 8
AAL type AAL5
ATM service class UBR/CBR/VBR
ATM UNI support UNI3.1/4.0
OAM F4/F5 Yes

Management

TR-069/ TR-098/ TR-104/ TR-111, SNMP, Telnet, Web-based management, Configuration backup and restoration
Software upgrade via HTTP, TFTP client and server, or FTP server

Bridge Functions

Transparent bridging and learning IEEE 802.1d
IGMP proxy Yes
IGMP snooping Yes

Routing Functions

Static route, RIP, and RIP v1, v2, NAT/PAT, DHCP Client/Server/Relay, DNS, ARP

Security Functions

Authentication protocols PAP, CHAP
VPN PPTP/L2TP/IpSec pass-through
Stateful packet inspection, Packet filtering, Denial of service protection, Traffic conditioning, WFQ-based bandwidth
Management, HTTP proxy

QoS

L3 policy-based QoS, IP QoS, ToS

Voice Functions

SIP RFC 3261
MGCP (optional) RFC 3435
Codec G.711, G.723.1, G.726, G.729ab
RTP RFC 1889
SDP RFC 2327
Caller ID ETSI based
Life line/Emergency call Yes
Echo cancellation G.168
Silence suppression Yes

Power Supply

External power adapter Input: AC100-240V, Output: DC15V / 1.6A

Environmental Conditions

Operating temperature 0 ~ 50 degrees Celsius
Relative humidity 5 ~ 95% (non-condensing)

Dimensions

205 mm (W) x 47 mm (H) x 145 mm (D)

Kit Weight (1*CT-6382T/TE, 1*RJ45 cable, 2*RJ11 cable, 1*power adapter, 1* CD-ROM)

0.96 KG

Specifications are subject to change without notice.

Taiwan:
3F-1, No.10, Lane 609, Chung Hsin Road Section 5, San
Chung, Taipei, Taiwan 24159
Tel: 886-2-2999-8261
Fax: 886-2-2999-8497

China:
NO.88 East QianJin Road, Kunshan City, JiangSu, China
Tel: 86-512-57383156, 86-512-57383157,
86-512-57384515
Fax: 86-512-57383155

Spain:
Edif. América II C/Prócion, 7 portal 3 bajo H 28023 Madrid,
Spain
Tel: 34-917990403
Fax: 34-913510999

UK:
566 Chiswick High Road Building 3, Chiswick Park Chiswick -
London, W4 5YA UK
Tel: 44-0-8453701031
Fax: 44-0-8453701032

France:
8, Rue Edouard Naud
92130 Issy-Les-Moulineaux, France
Tel: 33-1-78463600
Fax: 33-1-78463601

Czech Republic:
TOKOVO Jankovcova 1518/2, 170 00, Prague 7, Czech
Republic
Tel: 420-266-782040
Fax: 420-266-782990

USA & Canada:
16 Goodyear, Suite 120, Irvine, CA 92618
Tel: 1-949-7539640
Fax: 1-949-7539020

Brazil:
Al. Campinas, 977 - 7º. Floor - Room 71 / 72 - Jardins
Zip Code: 01404-001 - São Paulo - SP - Brazil
Tel: 00 55 11 3052-2295
Fax: 00 55 11 3052-2295

Mexico
Mariano Escobedo 396 Office 503 Colonia Anzures, Deleg.
Miguel
Hidalgo 11590 Distrito Federal México
Tel: +52 (55) 4623-1516



COMTREND CORPORATION
Global contact: sales@comtrend.com
Website: www.comtrend.com



DS_CT6382T/CT6382TE_R1.2_042208