

Wireless ADSL2+ 4-Port Router



4 Ethernet | 802.11b/g | IPTV Ready Firewall

- 54 Mbps 802.11g Wireless
- Air Touch*: Simple setup button to securely connect
- ADSL2+ (24Mbps / 4 Mbps)
- 4 Ethernet (1 Port configurable as WAN Ethernet)
- CPE WAN Management Protocol (TR-069, TR-098, TR-111*)
- CPE LAN Management Protocol (TR-064*)
- IPTV Support
- VLAN functionality (802.1Q)
- IP QoS, Diff Serv, 802.1P support
- Universal Plug&Play (UPnP IGD)
- VPN pass-through (PPTP, L2TP, GRE, IPSec)
- AutoMesh* Technology
- Advanced security with Statefull Packet Inspection
- Firewall and DoS protection
- Multi-language WebUI (English, Russian, Greek and Turkish)
- ADSL Usage Monitor
- Robust against wide voltage fluctuations
- AirTies Easy Setup CD (with animated instructions)
- Auto Firmware Update
- 3 years warranty
- 24x7 technical support

All in one solution for wireless internet access!!

ADSL2+ Modem, Firewall, Router 4 Ethernet, Wireless Access Point

RT-212 is an all-in-one solution that can fulfill all your internet needs. You can use it to access the Internet over your ADSL line, to set up your local wireless network.

Remote Management: Auto-provisioning of LAN and WAN setting via CWMP (TR-069, TR-098, TR-111*, TR-064) support.

IPTV Support: RT-212 possesses all the features needed for an IPTV application. It supports up to 8 ATM PVCs to be able to separate IPTV, VoIP and data traffic. For cases where a single PVC is used for more than one type of service, the IPQoS feature can be used to prioritize packets and reserve bandwidth based on traffic type.

The RT-212 recognizes the IPTV devices connected to it no matter which Ethernet port they use and automatically forwards that port to the PVC reserved for IPTV traffic. Thus, service is uninterrupted even if the user changes the port the IPTV device is attached to. The RT-212 can support IPTV service in both router and bridge modes. It can transfer various DHCP options necessary for the initial configuration of IPTV devices from the provider network's DHCP to the IPTV device.

The RT-212 supports IGMP v1v2 and v3, thus sending a single request to the service provider even when more than one IPTV device requests the same channel. With the IGMP snooping feature, the incoming broadcast from the service provider is delivered only to the port that has the IPTV device that requested that channel and not to other ports.

The RT-212 supports the TR-111 protocol (remote management of home networking devices). If the IPTV devices connected to the RT-212 support the TR-135 management protocol, the RT-212 permits remote management of those devices.

Expand your wireless coverage area with AirTies Mesh Technology: Set and sustain wireless links between APs and extend your range.

AirTies Network Assistant is a novel and innovative application that runs on users' Personal Computers and allows all users to setup, configure, monitor and control their home network, whatever their technical understanding is. All functionality is delivered in a user friendly way and is very easy to use.

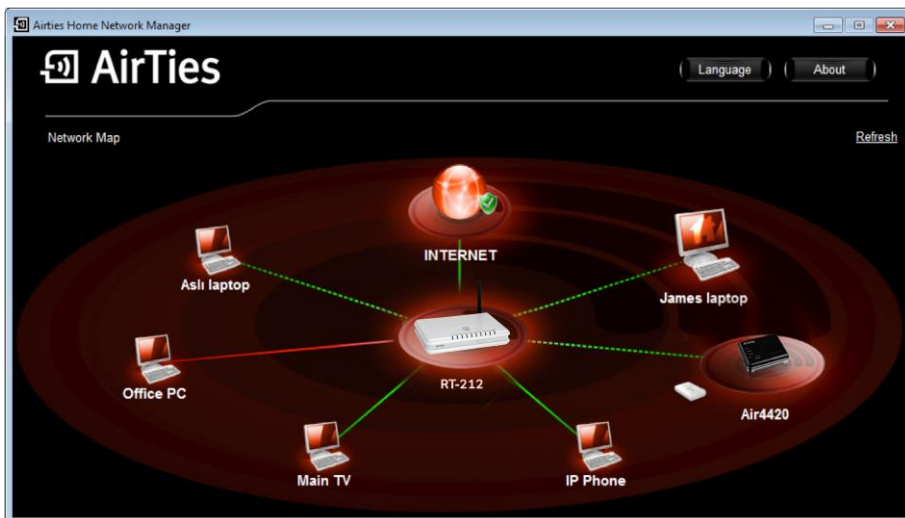
With the RT-212, you don't need to worry about the details of wireless security setup. The AirTies Network Assistant Program automatically configures your wireless security settings. A wireless network key is created, stored on your router and also entered into your computer automatically.

AirTies Easy installation and administration: insert the installation CD and follow the animated on-screen instructions

ADSL Usage Monitor shows total download and upload amounts on a monthly basis.

The **Automatic Firmware Upgrade** feature informs the user when a new firmware version is available and, if the user chooses to, automatically upgrades the router with the new firmware. With the latest firmware on your device, you have the advantage of using the latest technologies and maximizing the performance of your device. For service providers that have TR-069 based ACS, RT-212 supports firmware upgrade through TR-069. In case of lack of TR-069 ACS, RT-212 also supports Auto Firmware upgrade through HTTP based upgrade servers.

*will be available with firmware upgrade soon.



Specifications

Main Features

- Modem: ADSL2+ gateway (24Mbps download/ 4Mbps upload) optimized for your local ADSL service provider
- Router: DHCP server, DDNS, NAT, NAPT, Static router, VPN pass-through, 802.1Q VLAN
- Firewall: Advanced Anti-DoS SPI Firewall;URL*, IP and MAC address based filtering.
- Wireless communication at 54Mbps 802.11g; 54Mbps speed wireless Access point.
- AirTies Mesh Technology: Possibility to expand the wireless coverage area with AirTies products.
- Wireless security: WPA, WPA2-AES, 64/128 bit WEP, 802.1x standards
- Air Touch*: Simple setup button to securely connect WPS supported devices.
- VLAN support: Virtual LANs can be setup using Ethernet 1-4 and wireless.
- IP QoS support (ToS / Diffser): 4 service class definition
- Automatic prioritization of audio and video packets
- Easy setup and management: Universal Plug and Play (UPnP), AirTies Easy Setup CD (with animated instructions), user-friendly Utility Program and User Manual
- **Auto Firmware Upgrade:** Through TR-069, PC utility and HTTP
- Remote Management: TR-069, TR-098, TR-111*, TR-064* Web, Telnet
- Multi-language WebUI support: English, Russian, Greek and Turkish
- 24x7 technical support by highly trained AirTies support team and backed up by the AirTies R&D team
- 3 years extended warranty

IPTV Features

- 8 ATM PVC channel support
- VLAN Support (802.1Q)
- PVC-Port and PVC-SSID mapping feature
- IGMP Proxy support (v1, v2 and v3)
- IGMP Snooping feature*
- ATM QoS (UBE,CBR,VBR-rt,VBR-nt)
- Feature to obtain the required DHCP options from WAN and transmit to the STBs*
- Differentiating the incoming service at a port and automatic port-PVC assignment based on service type.*
- TR-111 support*

Technical Properties

- **ADSL Properties:** G.992.1 Annex A & ANSI T1.413 Issue2 (G.DMT), G.992.2 (G.Lite), G.992.3 ADSL2 (G.dmt.bis), G992.4 (G.Lite.bis), G.992.5 (ADSL2+), RADSL (Rate Adaptive DSL), READSL,SIP (RFC 3261/3264)
- **Connection Protocols:** PPPoE, PPPoA, RFC1483 Encapsulation (IP Bridging, ve encapsulated routing), RFC2364 PPP over AAL5, classical IP over RFC1577 ATM, ATM QoS, OAM (I.610), RFC2366 multicast over ATM.
- **Frequency interval:** ETSI 2400 MHz(min)- 2483.5 MHz(max) (13 channels with 3 not overlapping)
- **Max transmit power:** 20 dBm EIRP
- **Wireless security specifications:** WPA (802.1x, TKIP, PSK) ; WPA2 (AES); 64/128 bit WEP, wireless MAC address filtering, SSID hiding
- **LEDs:** Power , ADSL, INTERNET, LAN1-4, WLAN
- **Ports:** 1 ADSL (RJ-11), 1-4 Ethernet (RJ45), Power,
- **Reset button** to return to factory settings for ADSL
- **AirTouch*** button for simple setup and secure connection with WPS supported wireless devices.
- **On/Off** button.
- **UPnP :** Universal Plug & Play Internet Gateway Device
- **Router and Firewall:** Anti-DoS SPI firewall; URL*, IP and MAC address filtering; Port forwarding; DMZ; VPN pass through (PPTP, L2TP, IPSec); Static and dynamic (RIPv1/v2) routing; DNS Proxy; DHCP server and client; NAT/NAPT; User Authentication (PAP/CHAP/MSCHAP) with PPP; up to 1024 NAT sessions, 802.1d (self-learning transparent bridging), CoS (802.1P), 802.1Q VLAN
- Compatible with Windows 98, ME, 2000, 2003, XP, Vista, Win7, Linux, MAC OS
- **Class 2 device**
- **Certificates and Standards:** CE

Physical Characteristics

- **Dimensions:** 167mm x 118mm x 30mm
- **Weight:** 227g
- **Power:** 12V DC, 1 A
- **Adapter operating voltage:** 100V ile 240V AC arası
- **Operating Temperature:** 0°C – 40°C
- **Storage Temperature:** -40°C – 70°C
- **Operating Humidity:** %10 – %90

Minimum System Requirements

- ADSL service on your phone line must be activated and working properly.
- For wired use: a computer with an Ethernet adapter that supports the TCP/IP
- For wireless use: 802.11b or 802.11g wireless adapter or computer with wireless capabilities,
- For the webUI Access and setup: Any versions of Linux or Mac operating systems,
- For the AirTies Utility Program: 32-bit Windows 98 / ME / 2000 / 2003/XP/Vista/Win7 operating systems,
- The device does not need to be connect to a PC during normal operation.

* will be available firmware upgrade soon.

